



Chicago Metropolitan  
Agency for Planning

---

**Northeastern Illinois  
Regional Water Supply Planning Group (RWSPG)**

**Citizens Advisory Committee  
October 13, 2009**

---

# Presentation Overview

---

- Background information
- Importance
- 3 main products
  - Demand Study
  - Ground/surface water modeling study
  - Water Supply Plan
- Current status





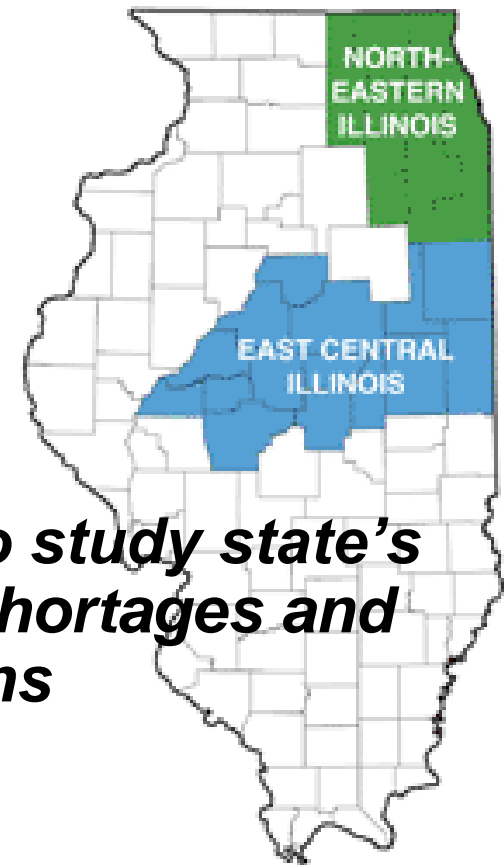
OFFICE OF THE GOVERNOR  
ROD R. BLAGOJEVICH - GOVERNOR

# NEWS

**FOR IMMEDIATE RELEASE**

January 9, 2006

***Governor issues executive order to study state's water needs to protect against shortages and develop regional plans***



Chicago Metropolitan  
Agency for Planning



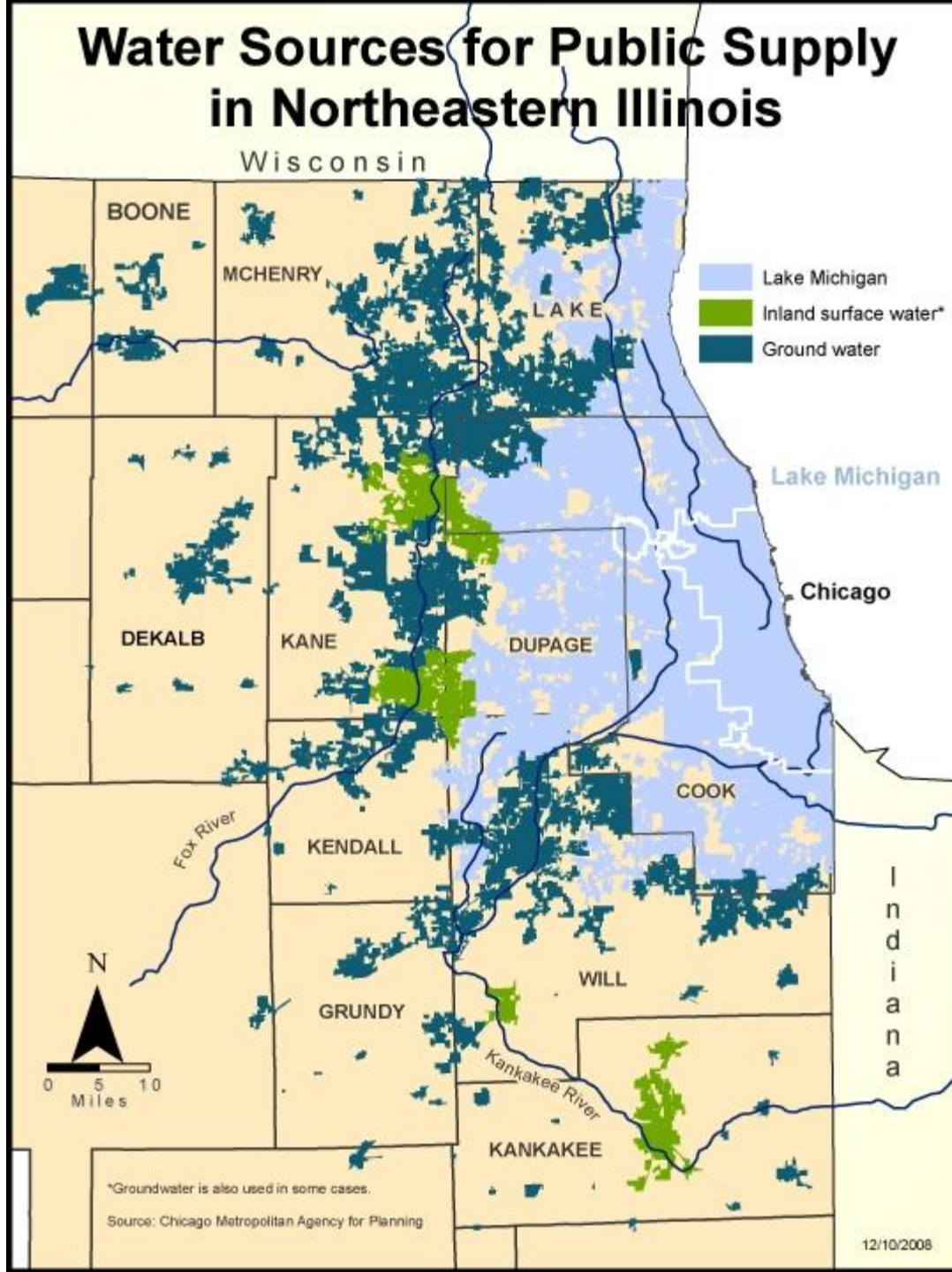
# Northeastern Illinois Regional Water Supply Planning Group

Boone | Cook | DeKalb | DuPage | Grundy | Kane | Kankakee | Kendall | Lake | McHenry | Will

- **3 year process**
- **11-County**
- **35 member group**
- **Chicago Metropolitan Agency for Planning (CMAP)**
- **2050 planning horizon**
- **10 scheduled meetings a year**
- **3 major water sources**



# Water Sources for Public Supply in Northeastern Illinois



\*Groundwater is also used in some cases.

Source: Chicago Metropolitan Agency for Planning

12/10/2008

# NE IL RWSPG Goals

---

- ***Goal #1 Ensure water demand and supply result in equitable availability through drought and nondrought conditions alike.***
- ***Goal #2 Protect the quality of the ground and surface water supply.***
- ***Goal #3 Provide sufficient water to sustain aquatic ecosystems and economic development.***
- ***Goal #4 Inform the people of northeastern Illinois about the importance of water-resource stewardship.***
- ***Goal #5 Manage withdrawals from water sources to protect long-term productive yields.***



# Why is this important?

---



= 37 Gallons



Chicago Metropolitan  
Agency for Planning



# Northeastern Illinois Regional Water Supply Planning Group

Boone | Cook | DeKalb | DuPage | Grundy | Kane | Kankakee | Kendall | Lake | McHenry | Will

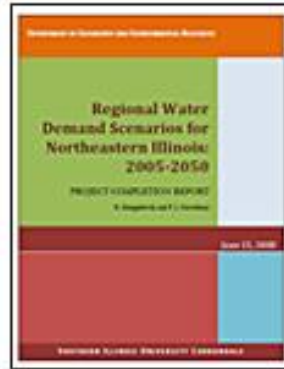
- **Demand Study**
- **Modeling Study**
- **Regional Plan**



# Regional Water Demand Scenarios for Northeastern Illinois: 2005 – 2050

---

Dr. Benedykt Dziegielewski  
Dept. of Geography and Environmental Resources  
Southern Illinois University Carbondale



# 3 Demand Scenarios

---

- 1) Current Trends / Reference – trends that approximate recent history
- 2) Less Resource Intensive – reduce water demand
- 3) More Resource Intensive – increase water demand



# Water Supply- Ground and Surface Water Modeling

---

**H. Allen Wehrmann, P.E., Scott Meyer, P.G., and Yu-Feng Lin, Ph.D.**  
**Center for Groundwater Science**  
**Illinois State Water Survey**  
**University of Illinois**



**<http://www.isws.illinois.edu/>**

---



Chicago Metropolitan  
Agency for Planning

# Regional Water Supply Plan

---

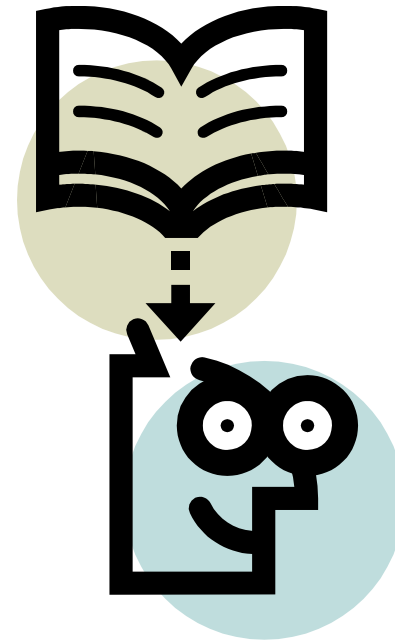
- Current water supply conditions
- Future Water Availability
- Water Quality and aquatic ecosystems
- Land and Water
- Conservation
- Water Reuse
- Rate Structures
- Funding and much, much more.....



# Regional Water Supply Plan (2)

---

- Recommendations
  - Local
  - County
  - Regional(CMAP)
  - State



# Current Status of the RWSPG

---

- 2 more meetings
- Plan Approval-January
- Publish and Distribute Plan-February
- Begin plan implementation
  - Outreach
  - Technical Assistance
  - Recommendations
- Next cycle of water supply planning begins.

# Thank you!

---



Amy Talbot

[atalbot@cmap.illinois.gov](mailto:atalbot@cmap.illinois.gov)

312.386.8646

RWSPG website:

<http://www.cmap.illinois.gov/watersupply/default.aspx>



Chicago Metropolitan  
Agency for Planning

# GO TO 2040 and RWSPG

---



Chicago Metropolitan  
Agency for Planning