



KANE COUNTY BIKE & PEDESTRIAN PLANNING

KANE COUNTY

Demographics

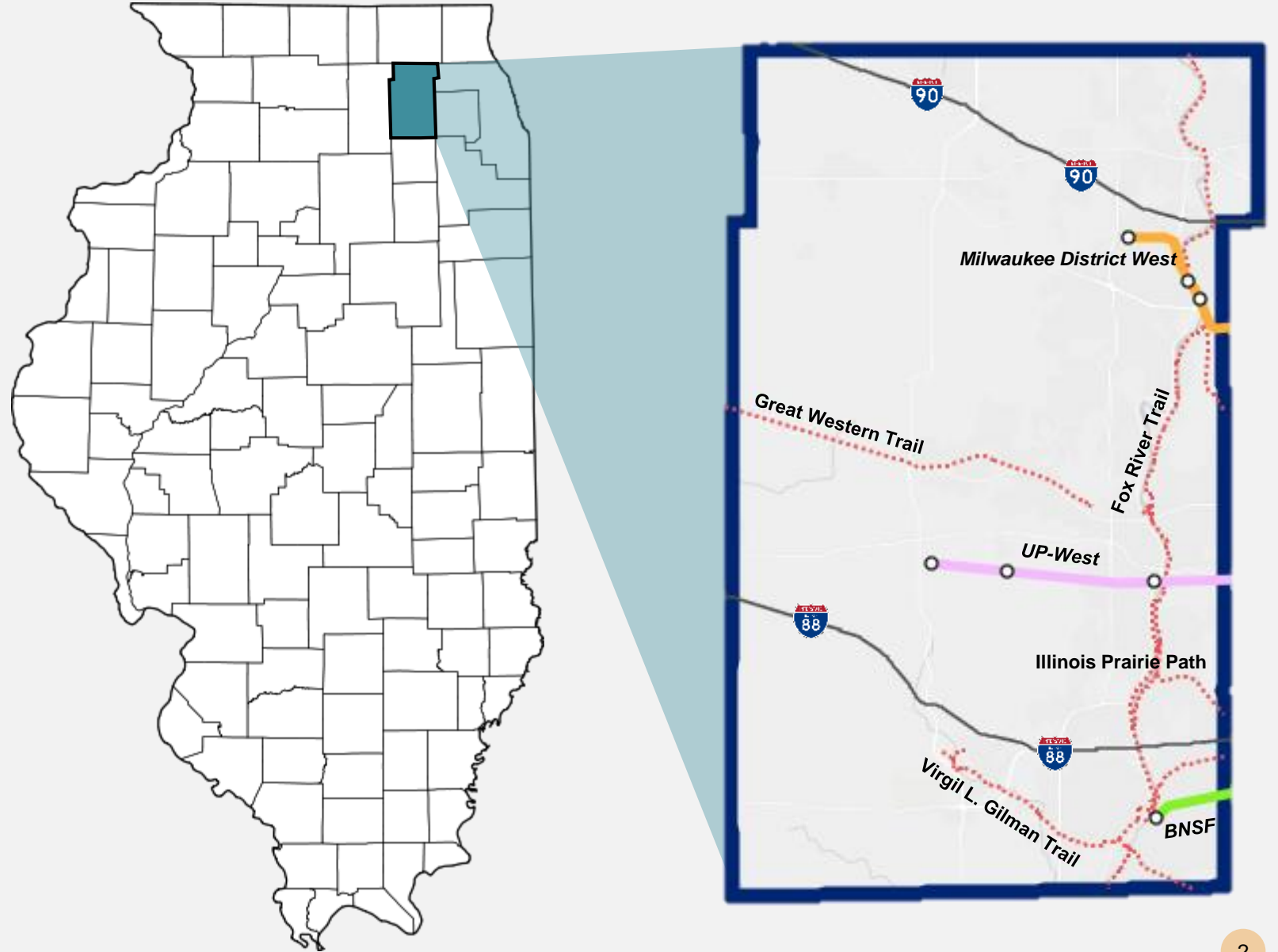
- Population: 534,667
- Largest City: Aurora (200,965)

Transportation Network

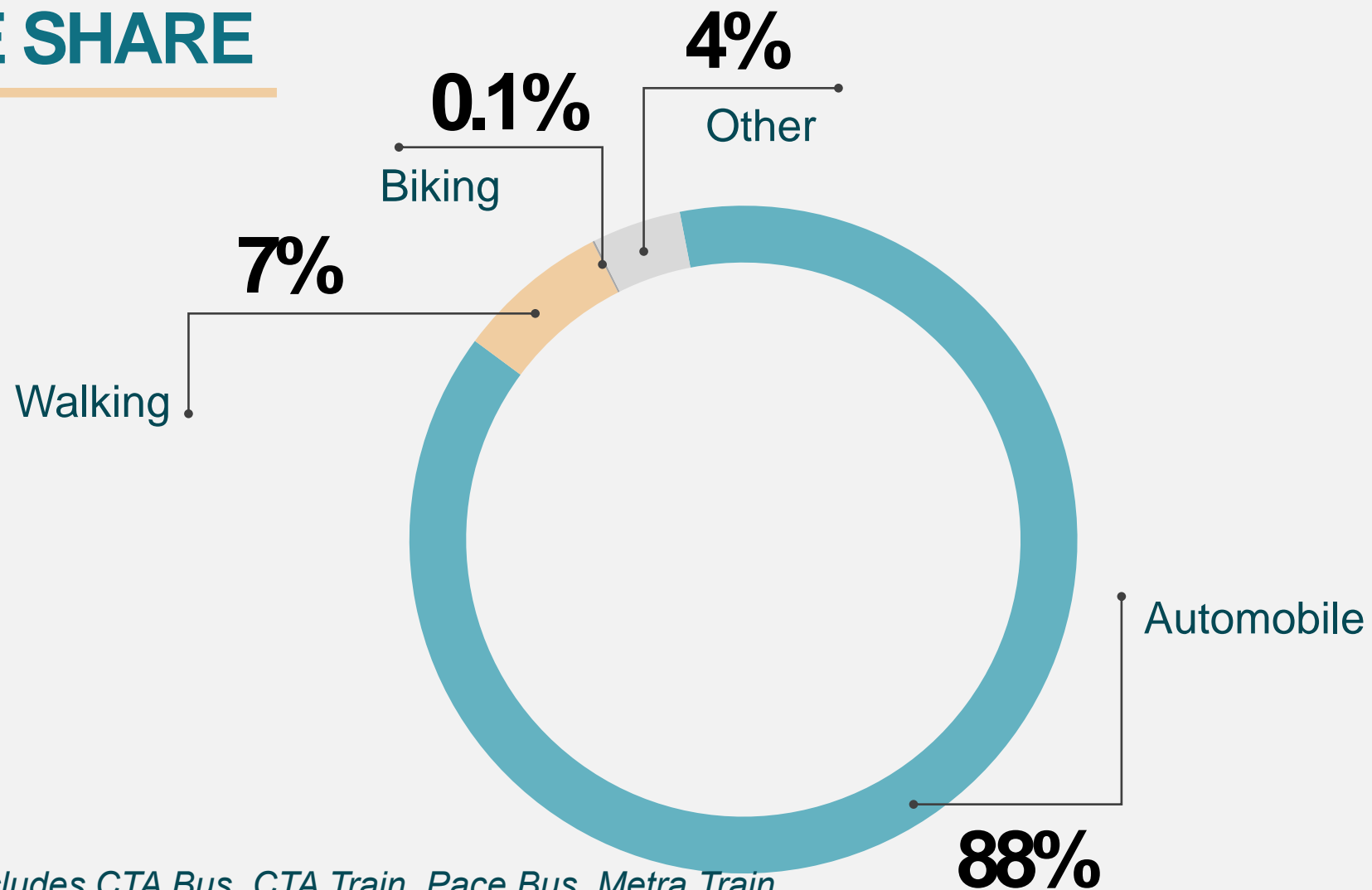
- Over 400 miles of regional and local bike trails
- Access to Metra and Pace systems

Community Amenities

- Forest preserves and community parks
- Mix of rural/suburban/urban communities



MODE SHARE



“Other” includes CTA Bus, CTA Train, Pace Bus, Metra Train, School Bus, and Taxi

PROGRAMMING



KKCOM Bike & Pedestrian

Report/App
KKCOM staff has worked to create resources that will assist its municipalities and agencies in their bicycle and pedestrian planning efforts.



Bike Sharing System

KDOT has taken great strides in creating a regional bike share system that not only includes municipalities, private companies, and agencies within Kane County, but also in Kendall County. The system is planned to be launched next summer.

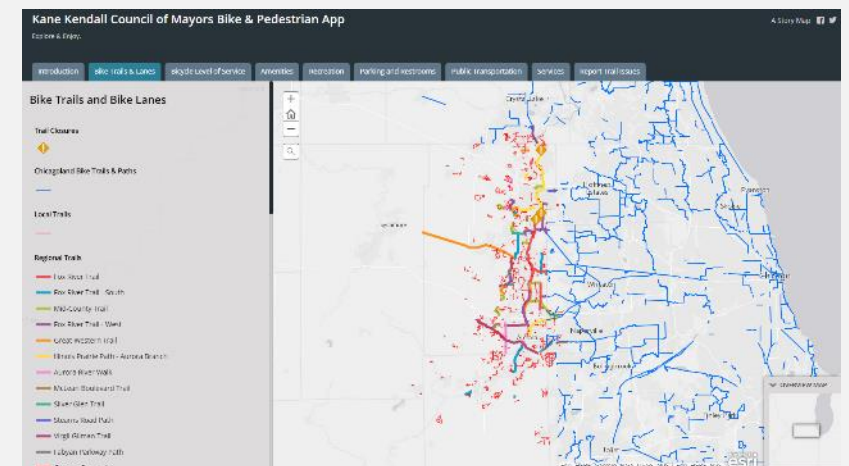
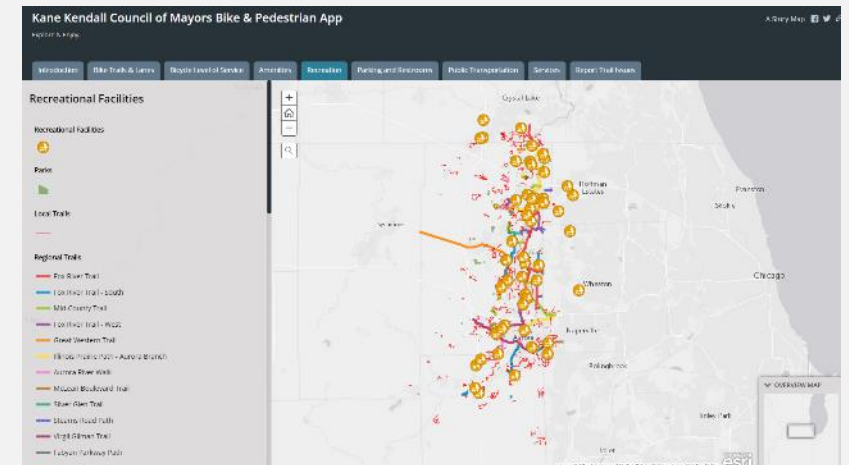


Kane County Cycling Club

KKCOM is partnering with the Kane County Health Department to create a rewards program for County students (K-8) that choose to bike for recreation and transportation. The program will help to promote lifelong fitness habits and instruction for safe biking techniques.

KKCOM BIKE & PEDESTRIAN APP

- Online app allows users to access maps of bicycle/pedestrian trails, transit, safety, and amenities
 - Bike trails/lanes
 - Bicycle Level of Service
 - Local amenities
 - Recreational facilities
 - Public transportation
 - Public services
- Allows users to become more knowledgeable and use system safely



Explore & Enjoy.

KKCOM BIKE & PED. APP

[Bitly.com/kkcomapp](https://bitly.com/kkcomapp)

- Introduction
- Bike Trails & Lanes**
- Bicycle Level of Service
- Amenities
- Recreation
- Parking and Restrooms
- Public

Bike Trails and Bike Lanes

Trail Closures



Chicagoland Bike Trails & Paths

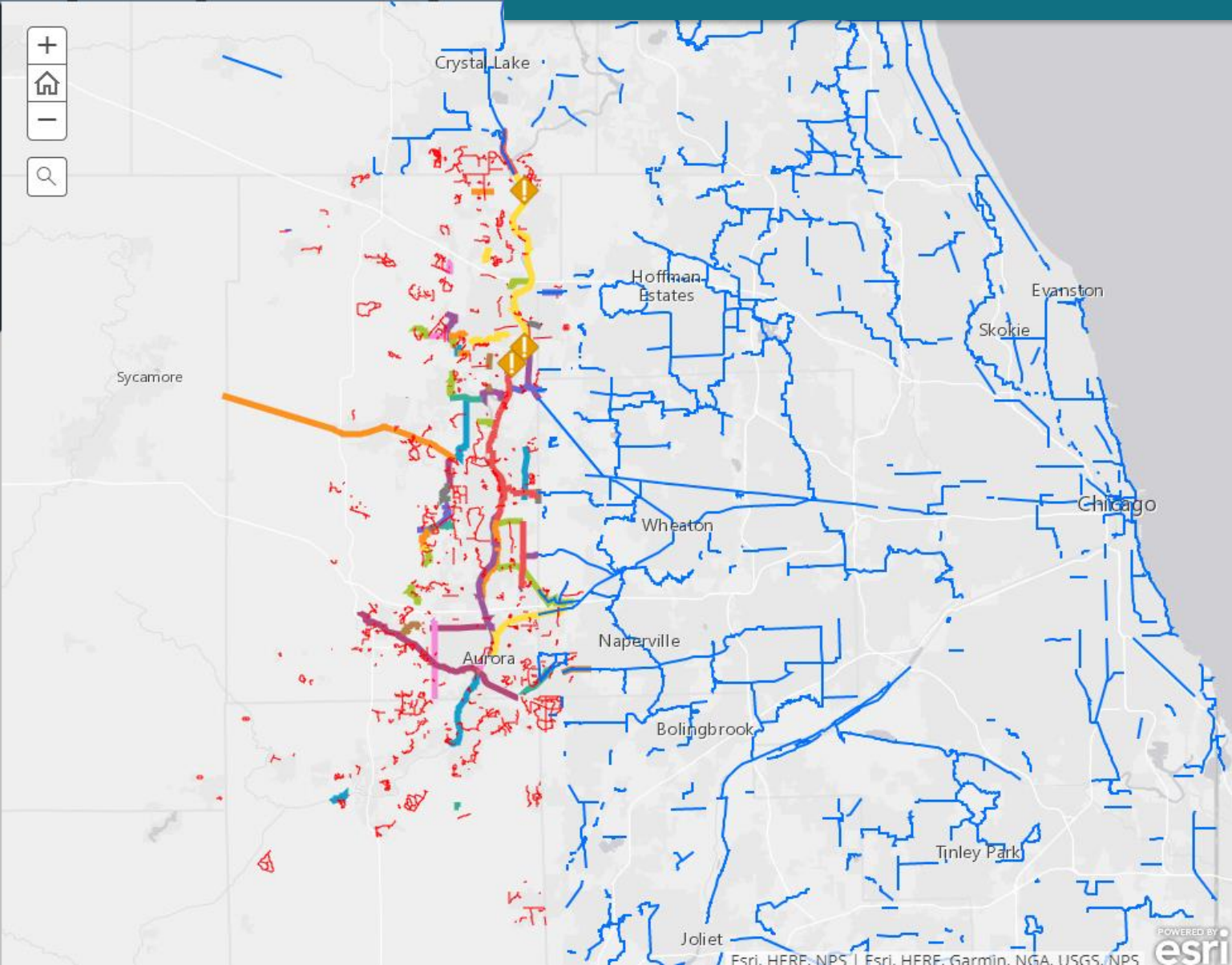


Local Trails



Regional Trails

- Fox River Trail
- Fox River Trail - South
- Mid-County Trail
- Fox River Trail - West
- Great Western Trail
- Illinois Prairie Path - Aurora Branch
- Aurora River Walk
- McLean Boulevard Trail
- Silver Glen Trail
- Stearns Road Path
- Virgil Gilman Trail
- Fabyan Parkway Path
- Conasa Connector



OVERVIEW MAP

KKCOM BIKE & PED. APP

[Bitly.com/kkcomapp](https://bitly.com/kkcomapp)

- Introduction
- Bike Trails & Lanes
- Bicycle Level of Service
- Amenities
- Recreation
- Parking and Restrooms
- Public Transportation

Recreational Facilities

Recreational Facilities



Parks

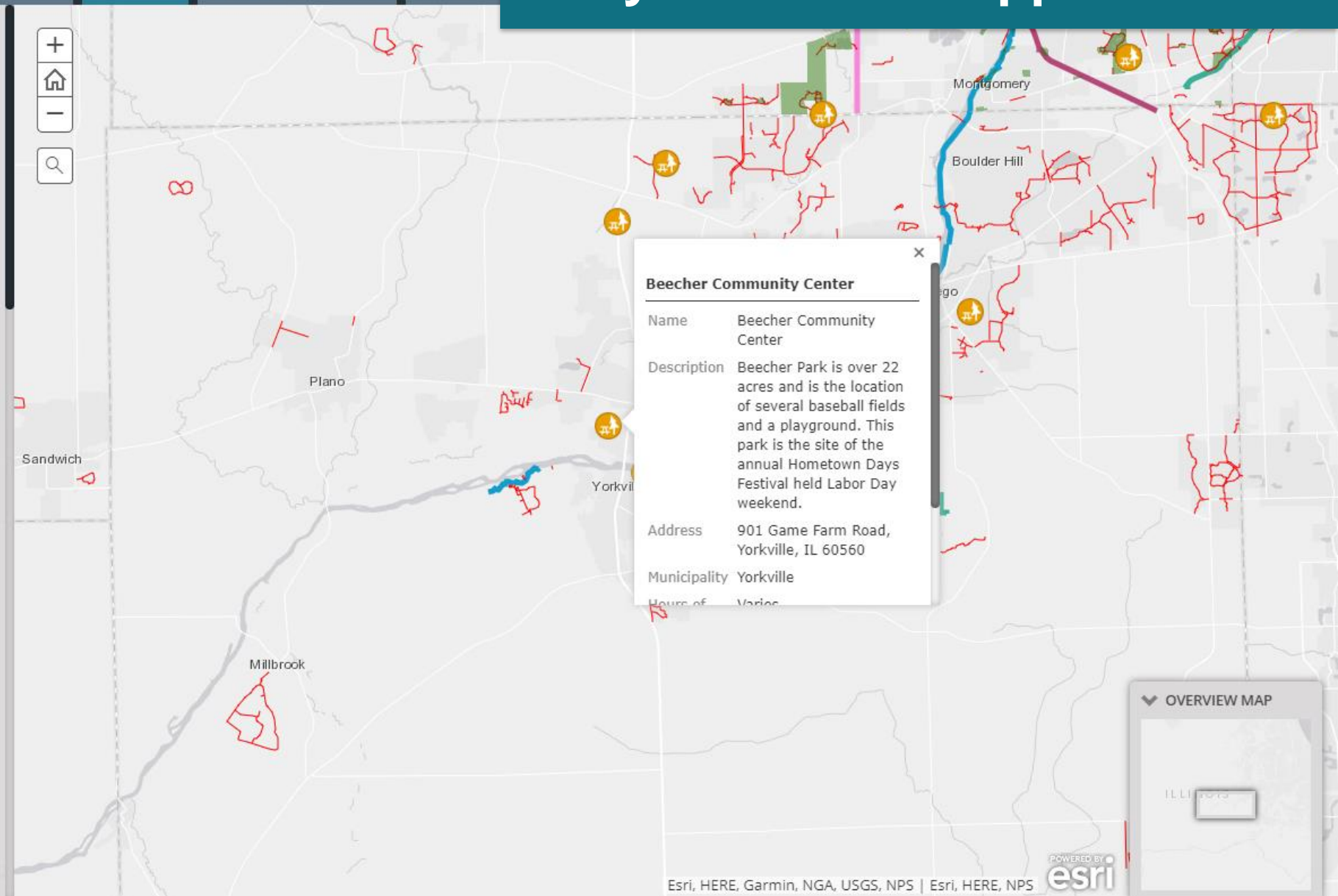


Local Trails



Regional Trails

- Fox River Trail
- Fox River Trail - South
- Mid-County Trail
- Fox River Trail - West
- Great Western Trail
- Illinois Prairie Path - Aurora Branch
- Aurora River Walk
- McLean Boulevard Trail
- Silver Glen Trail
- Stearns Road Path
- Virgil Gilman Trail
- Fabyan Parkway Path
- Geneva Connector



OVERVIEW MAP

KKCOM BIKE & PEDESTRIAN REPORT

- Provides info on existing County's projects, programs, and infrastructure
- Offers strategies on how to advocate for more bicycle and pedestrian infrastructure
 - Improve multi-modal options at transit hubs
 - Reimagine downtown spaces to include more sustainable infrastructure
 - Eliminate all bicycle and pedestrian fatalities
 - Invest in rural bicycle and pedestrian infrastructure

ON TO 2050 Plans but Metra has not committed to the extension.

Pace Bus is another public transportation provider within the two counties, and helps thousands of residents reach their daily destinations. Pace serves municipalities throughout Cook, Will, DuPage, Kane, Lake, and McHenry counties. According to data provided by Pace staff, there are 38 Pace bus routes that have stops within Kane County. The longest route, Route 607, is 68 miles in length and provides service between I-90/Randall Road and the Pace Northwest Transportation Center in Schaumburg. For more information about the routes and station locations that Pace operates, visit their website; the link is provided in Appendix A.

Ride in Kane (RIK) is another public transportation option that specializes its services to disabled and elderly citizens. Ride in Kane provides curb-to-curb bus or taxi service to seniors 65-and-older and to disabled individuals in Kane County. The minimum fare for each ride is \$4. This minimum fare applies to rides ten miles or less; riders will be charged \$1.50 for every mile after the first ten miles. Ride in Kane is administered by the Association for Individual Development in partnership with Pace Suburban Bus, Kane County and local municipalities, townships and social service agencies operating as local sponsors. However, not all municipalities within Kane County participate in the service. For a full list of participating municipalities and more information on the program, visit the website, listed in Appendix A.

Kendall County is served by the Kendall County Area Transit system (KAT), which operates a dial-a-ride bus service. Kendall Area Transit services all locations within the county and some designated locations outside of the county; rides on the service must originate or end within Kendall County. KAT utilizes mini-buses and vans to transport its users to their desired destination. One-way fares for the service are \$3.00 for trips within the county and \$5.00 for trips that travel outside of the county. The service began in 2010, when it posted an annual ridership of just under 1,100 riders. In 2018, the service provided over 29,100 rides to its users. To learn more about the program, visit their website, listed in Appendix A.

TRANSIT AVAILABILITY IN KANE & KENDALL COUNTY

Despite the availability of many transit options, much of the Kane and Kendall County region is not served by transit.

In order to better plan for the region's transit needs, CHAP has created an indicator that helps to measure an area's access to transit. The Access to Transit Index is a uniform measure of transit level of service available during an average week. It permits the tracking of changes in transit level of service over time and presents the results in an intuitive fashion.

Each area was given a rating of 1-5. Below are the criteria for each rating:

- Category 1: Less than 100 stops per week
- Category 2: 100 to 299 stops per week
- Category 3: 300 to 999 stops per week
- Category 4: 1000 to 1999 stops per week
- Category 5: At least 2000 stops per week

01 | INTRODUCTION

Bike & Pedestrian Initiatives

Bicycle Friendly Communities and Businesses

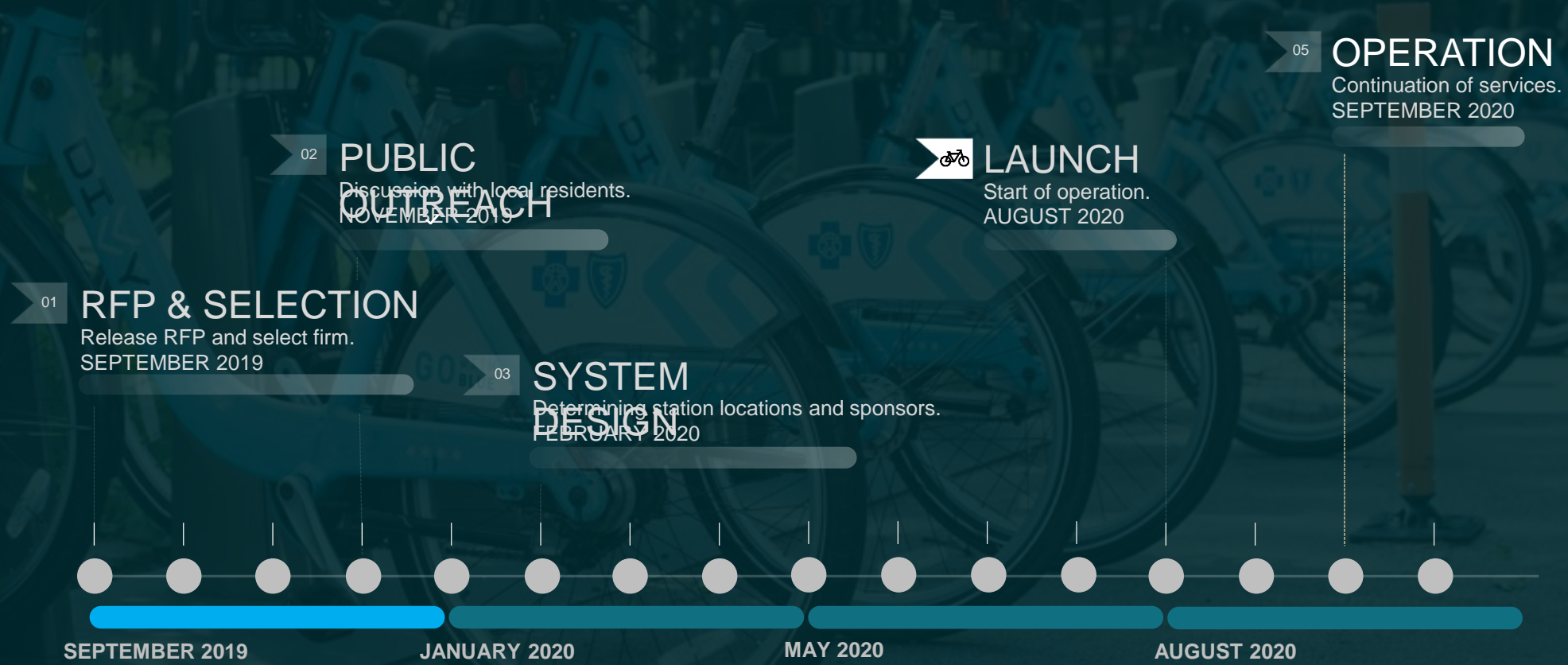
The League of American Bicyclists is a non-profit organization that promotes bicycling for fun and fitness through advocacy and educational programs.

KANE COUNTY BIKE SHARING PROGRAM

- Launching 12+ station bike share system by August 2020
- Docked stations
- Program initiatives
 - Alternative purchasing options
 - Helmet renting options
 - Bicycle safety classes and curriculum
 - Low-income discounts
 - Adaptive stations
- Opportunity for other micromobility options in future

KEY TIMELINE GOALS

KANE COUNTY BIKE SHARE



KANE COUNTY CYCLING CLUB

- New program designed to incentivize biking in younger age groups
- Students receive rewards
 - Kane County Cougars & Windy City Bulls tickets
 - Local restaurants, attractions, recreation donations
- Utilize donated bikes for students without resources to purchase one
 - Working Bikes (Chicago)
 - Local bike shops

INFRASTRUCTURE PROJECTS



Aurora Transportation Center Improvements

Creation of a pedestrian- and bicycle-only bridge across the Fox River will connect commuters using the ATC to an underutilized parking lot. Additional connections to nearby regional trails will now be possible as well.



Longmeadow Parkway Sidepath

As part of the expansive Longmeadow Parkway project, several sustainable transportation elements will be implemented, including a sidepath, pedestrian crossing elements, and additional trail connections.



Fox River Trail under UP Railroad

A tunnel is being created to allow for bicyclists and pedestrians to cross a busy section of tracks. The tunnel will provide one of the last missing pieces in the Fox River Trail network.

AURORA TRANSPORTATION CENTER IMPROVEMENTS

- 930-foot pedestrian and bicycle bridge over Fox River
- Allows Metra commuters to easily access parking lot across River from ATC
 - Creating new parking lot across river
 - Provides 780+ new spots to commuters
- Separates bicycle and pedestrian traffic



LONGMEADOW PARKWAY SIDEPATH

- Four-lane bridge across Fox River
- Shared use path along entire corridor
- Provides improvements to FRT connections
- Pedestrian accommodations at every intersection



FOX RIVER TRAIL UNDER UP RAILROAD

- Tunnel under UPRR to allow for crossing of railroad
 - Flood in 2013 destroyed makeshift railroad crossing in place
 - No other crossing was possible
 - 600+ daily crossings per day on weekends
- Closed significant gap in regional trail network



THANK YOU



Ryan Peterson

TRANSPORTATION PLANNER/BICYCLE & PEDESTRIAN COORDINATOR



peteronryan@co.kane.il.us



630-444-3143

