



Lake County's Regional Trails

September 18, 2019

CMAP Bicycle and Pedestrian Task Force

Presented by Emily Karry, LCDOT

and Randy Seebach, LCFPD



OVERVIEW

Introduce our agencies and provide background



Provide history on the working relationship of our agencies



Highlight accomplishments we've made together



Make you want to check out paths and explore in Lake County!



LCFPD Mission

“

To preserve a dynamic and unique system of natural and cultural resources and to develop innovative education, recreation and cultural opportunities of regional value, while exercising environmental and fiscal responsibility.

”

Preservation, Restoration, Education and Recreation

Lake County Forest Preserves

www.LCFPD.org



LCFPD Trail History

DPRT (Des Plaines River Trail)

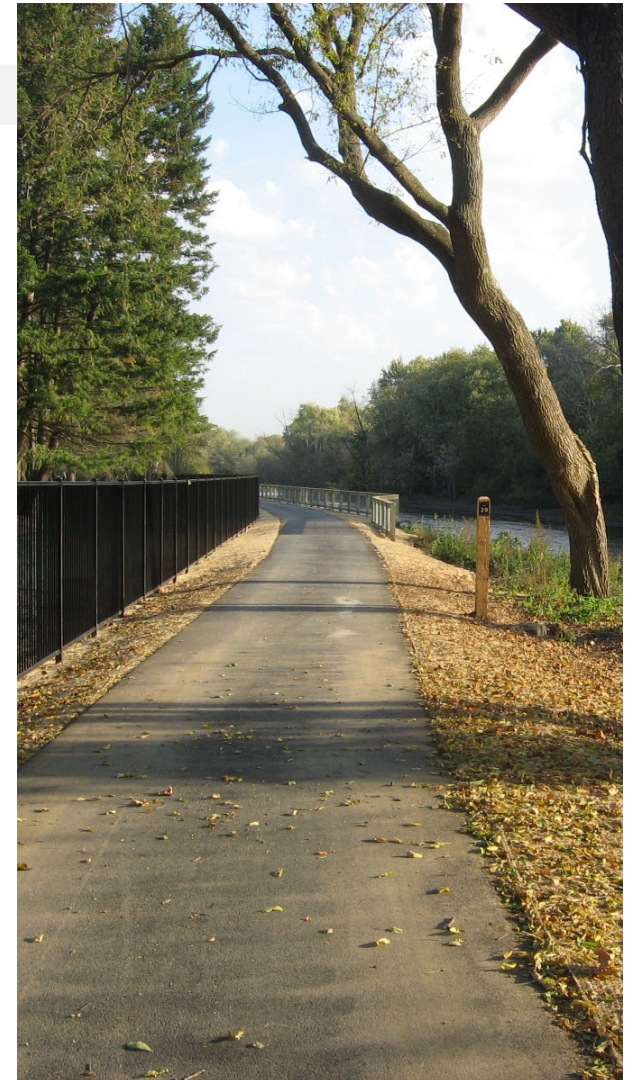
- Early 1960's – Initial properties purchased to protect flood plain
- Mid 1970's – Plans sketched out for multi-use trail along rivers' edge
- First section completed in 1980
- Final leg completed in fall of 2015
- 31.4-miles total
 - 31.4-miles completed/open

Millennium Trail

- Late 1990's – Hence the name "Millennium Trail"
- 41.4-miles total (planned)
 - 31-miles completed/open

Fort Hill Trail

- LCDOT/LCFPD partnership
- First section completed in fall of 2009
- 8.2-miles total (planned)
 - 6-miles completed/open





LCFPD Trail Statistics

205-miles of
Multi-use Trails

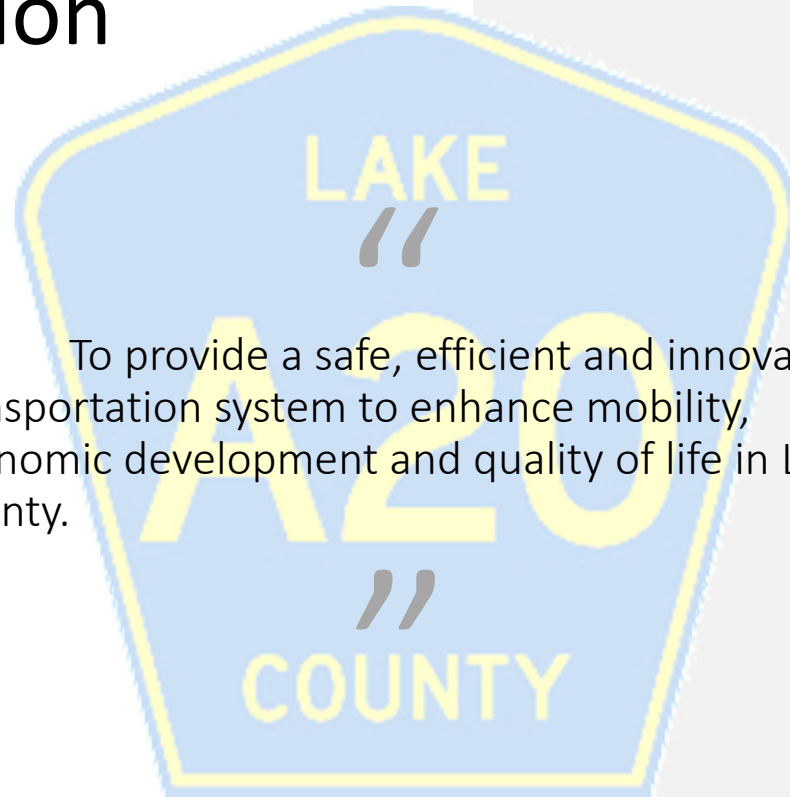


23 Tunnels and
Underpasses

173 Bike and
Pedestrian Bridges

LCDOT Mission

To provide a safe, efficient and innovative transportation system to enhance mobility, economic development and quality of life in Lake County.



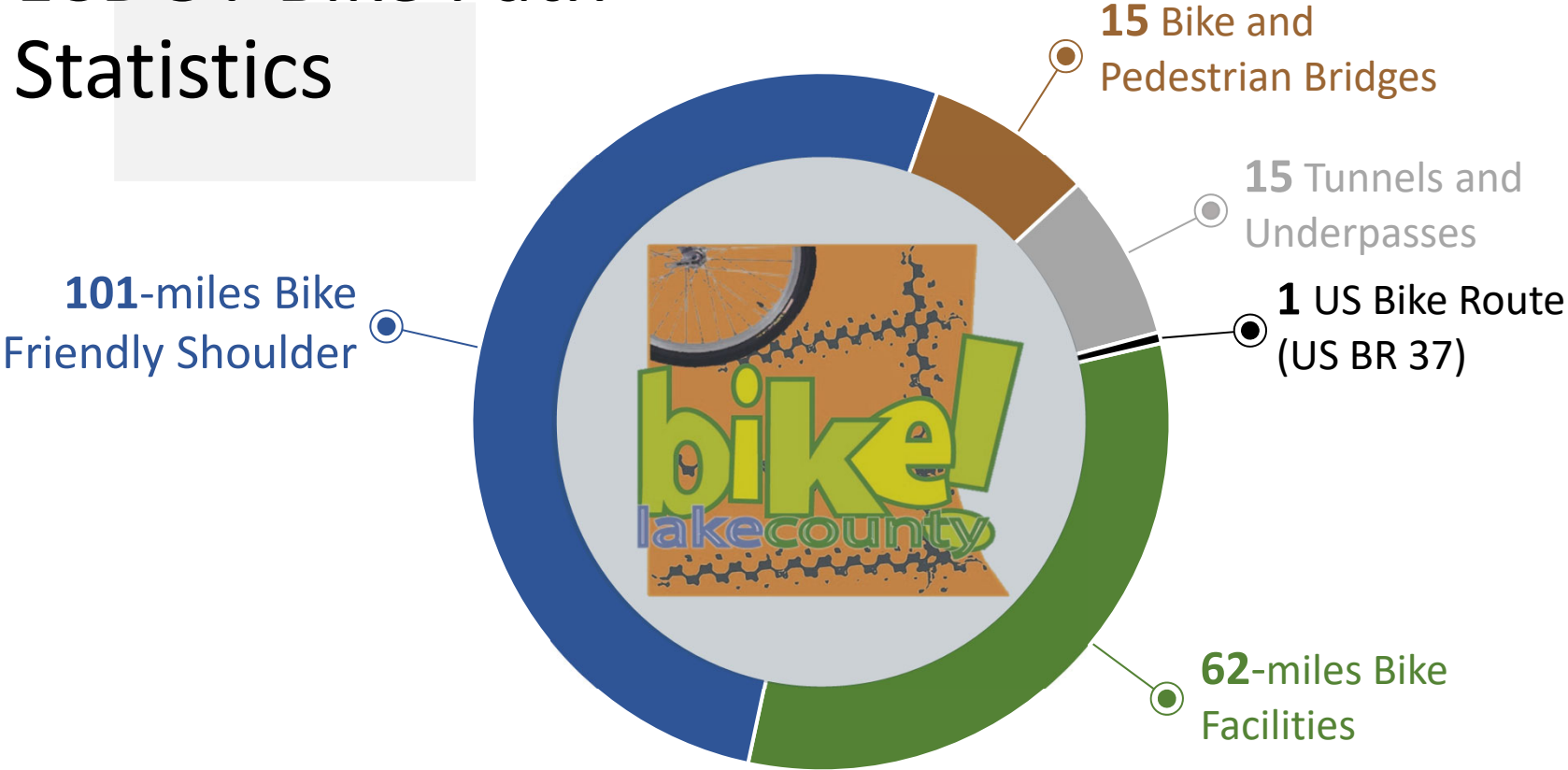
LCDOT Bike Path History

- Late 1980's first LCDOT path – Robert McClory Path
- Early 1990's – agreement with IDOT for North Shore Path
- Late 1990's to 2000's – Skokie Valley Path on ComEd property
- First long-range bicycle plan adopted June 2002 as part of County's 2020 Transportation Plan



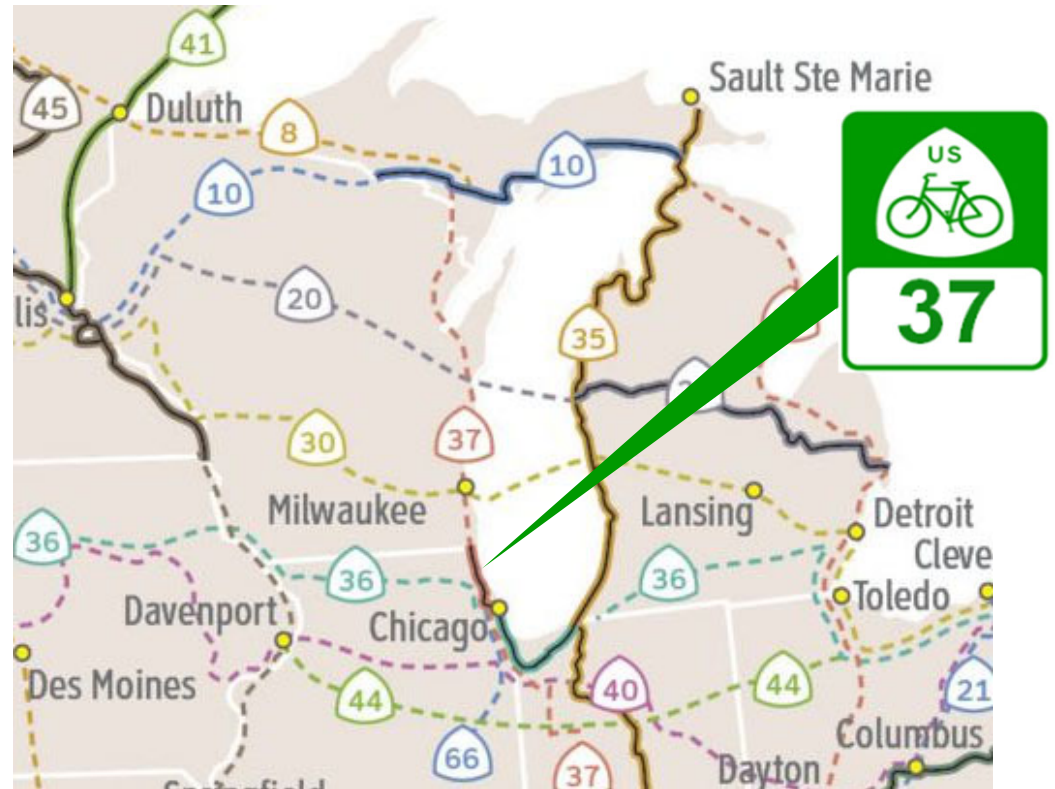


LCDOT Bike Path Statistics









Robert McClory Path: US Bicycle Route 37

- Part of planned 900-mile route circling Lake Michigan
- 25+ miles through Lake County from Lake Cook Road to the Wisconsin border
- Route is part of 13,500 miles that currently are designated

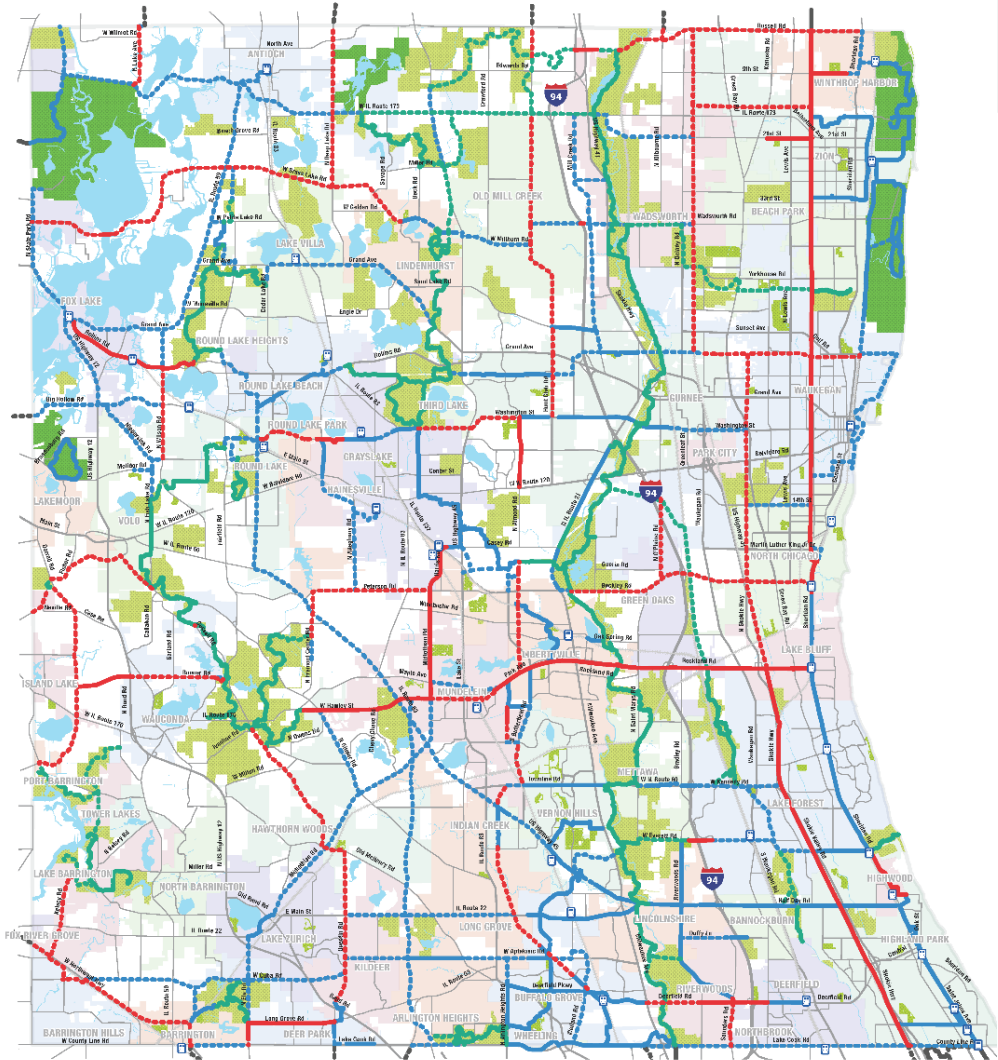


Bike and Pedestrian Priorities

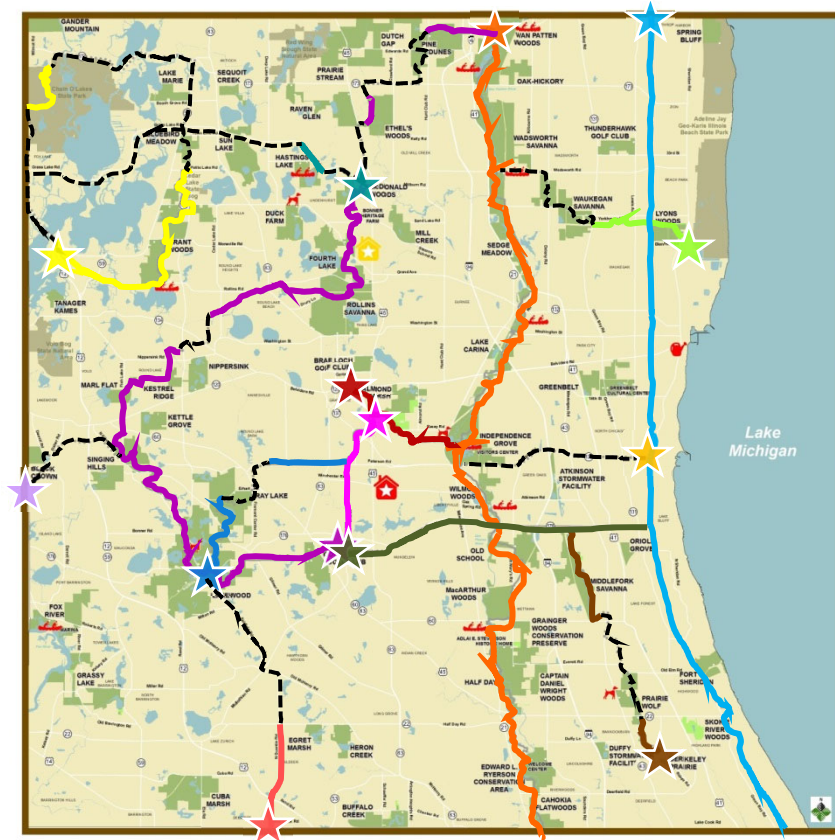
*Lake County's 2040
Non-Motorized Plan*

LCDOT	
	existing
	planned
LCFPD	
	existing
	planned
Other jurisdiction	
	existing
	planned

www.lakecountyil.gov/735/2040-Transportation-Plan



Lake County Regional Trails



- ★ Des Plaines River Trail
- ★ Millennium Trail & Greenway
- ★ Fort Hill Trail
- ★ Casey Trail & Greenway
- ★ Middlefork Trail & Greenway
- ★ Lyons Woods to DPRT
- ★ Chain O'Lakes Bike Path
- ★ Robert McClory Bike Path
- ★ North Shore Path
- ★ Prairie Crossing Path
- ★ Patriot Path
- ★ Quentin Road Bike Path
- ★ Grass Lake Road Bike Path
- ★ Grand Illinois Trail

Lake County Regional Trails

When completed, these 14 regional trails will:

- Stretch 194.10-miles
- Connect 60 municipalities
- Connect 51 schools
- Connect 51 forest preserves
- Connect 118 parks
- Connect 17 Metra stations
- Connect 529 Pace bus stops





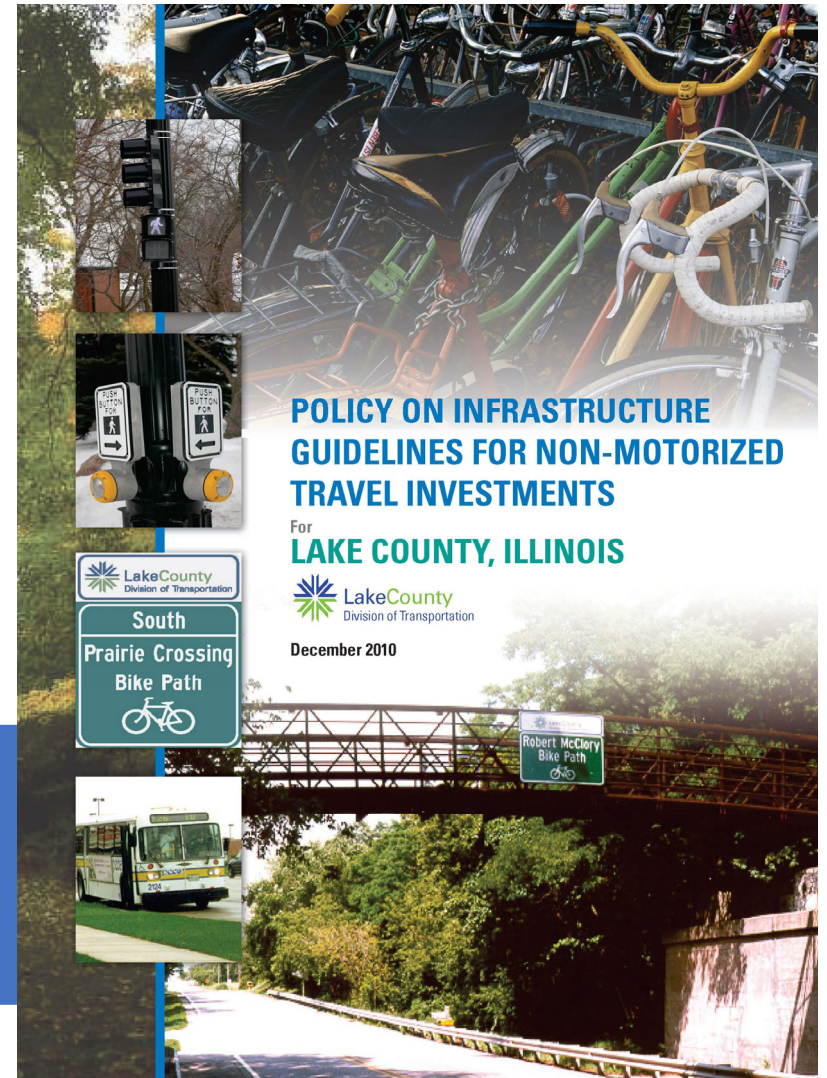
Other Agency Funding Partners

- — Successful implementation of several bike and pedestrian projects with assistance from FHWA, IDOT, IDNR, ICC, CMAP and others



LCDOT's Non-Motorized Travel Study

- Completed in 2010
- Identified connectivity gaps
- Provided policy for investments





LCDOT/LCFPD Working Together

- Millennium Trail - Tunnels under Fairfield Road and IL 176 at Lakewood Preserve
- Various connections to Des Plaines River Trail
- Other opportunities along roadway improvement projects





Other Cooperative Projects

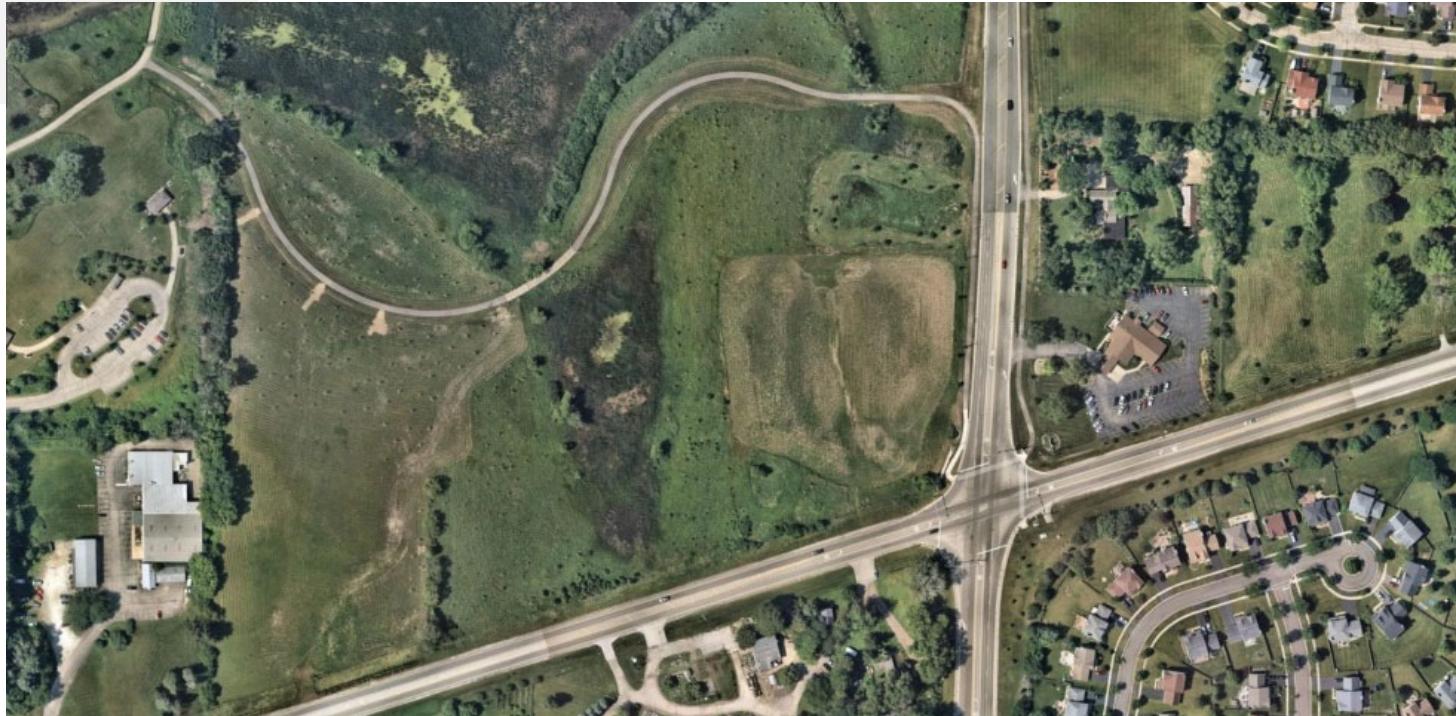
- — Wadsworth Savanna and Delany Road – detention, water quality basin and restoration





Other Cooperative Projects

- Cedar Lake Road Improvements – Impervious area offsets, restoration and trail connection



Other Cooperative Projects



- — Buffalo Creek Wetland Bank – Includes trail connections and restoration



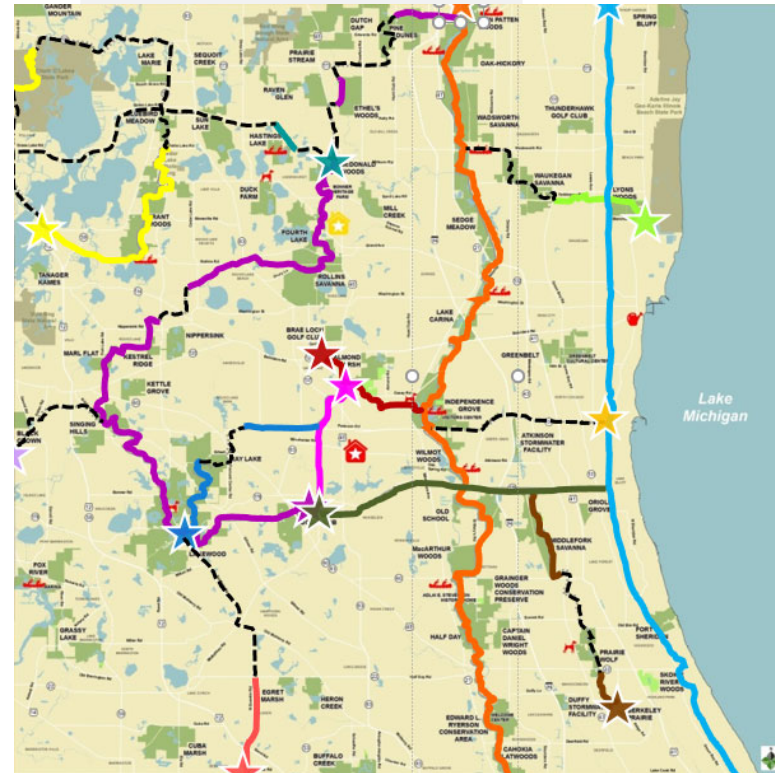
LCFPD Current Project Highlights

- Millennium Trail – Route 45 underpass and trail connection to Ethel's Woods Forest Preserve
- Multiple Small Trail Connections – With several municipality partnerships



On the Horizon LCFPD Trail Projects

- Completion of Millennium Trail
 - 10.4-miles left
- Completion of Fort Hill Trail
 - 2.7-miles left
- Completion of Chain O'Lakes Bike Path
 - 13.3-miles left
- Currently funding not available
- Begin initial planning to connect the southwest part of Lake County





LCDOT Current Project Highlights

- Bike Path Wayfinding and Signage Study
- Quentin Road
- 14th Street
- Patriot Path
- Skokie Valley Path
connection to Cook County

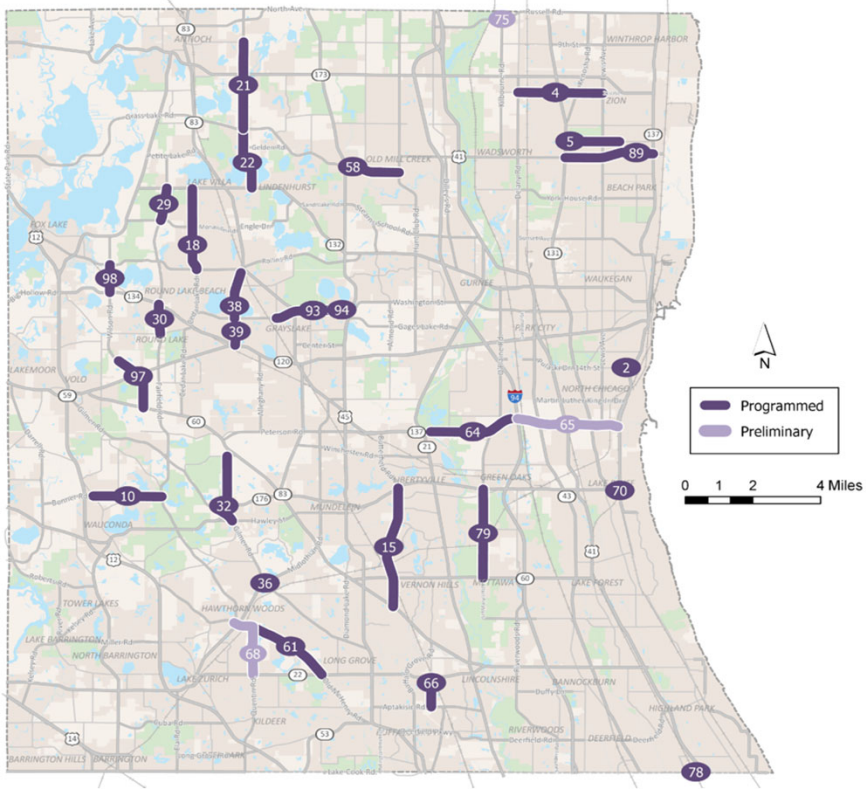




On the Horizon LCDOT Non-Motorized Improvements

- \$32M in non-motorized improvements
- 6% of 6-year project expenditures
- Bike paths
- Bike-friendly shoulders
- Sidewalks and sidewalk gap improvements
- Pedestrian accommodations

www.lakecountyil.gov/777/5-Year-Highway-Improvement-Program



2019-2024 Highway Improvement Program

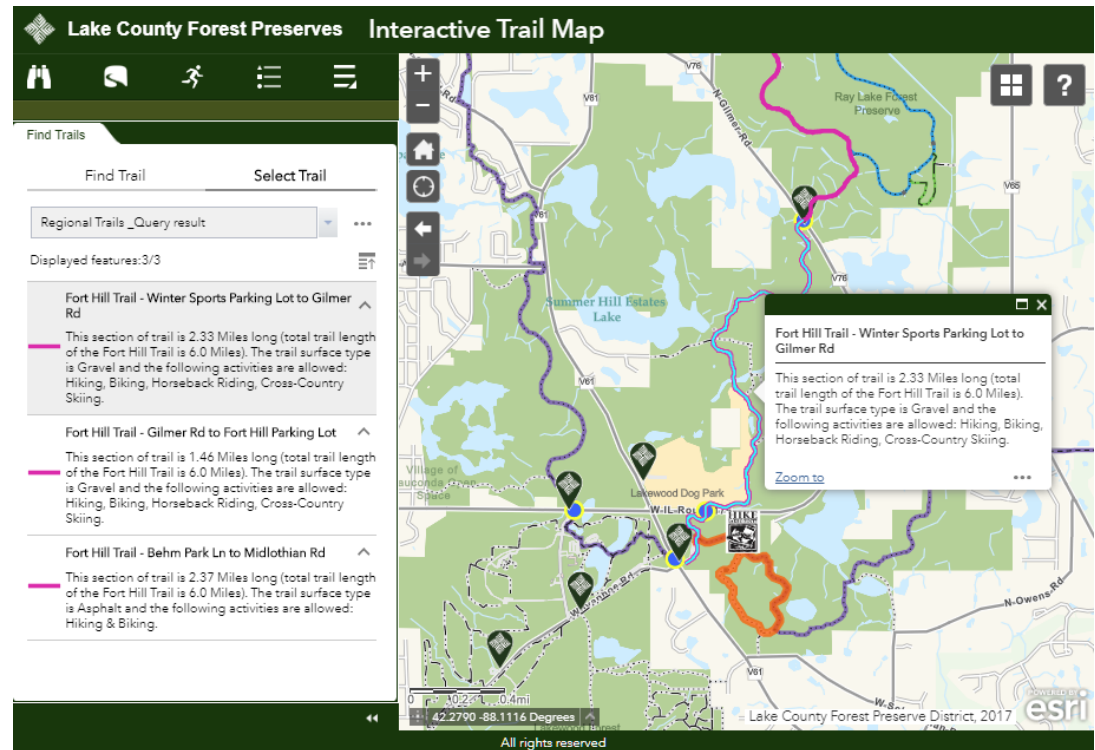
LCFPD Interactive Trail Map

You can locate trails and preserves, find activities and amenities, use GPS to find your location and navigate easily through preserves, all from your phone, tablet or desktop.

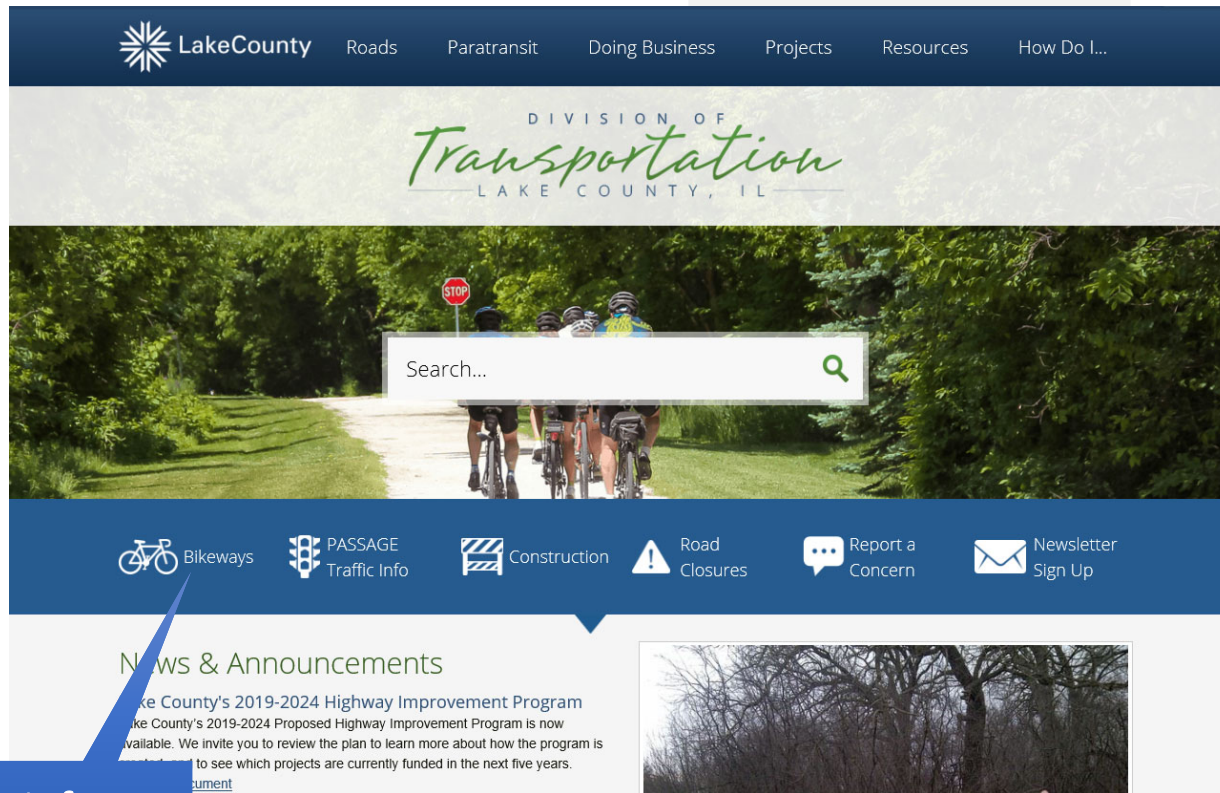
Provides trail information on:

- Trailhead locations
- Length of trails
- Trail surface type
- Trail activities allowed
- Trail closures
- Underpass status

LCFPD website: www.lcfpd.org/maps



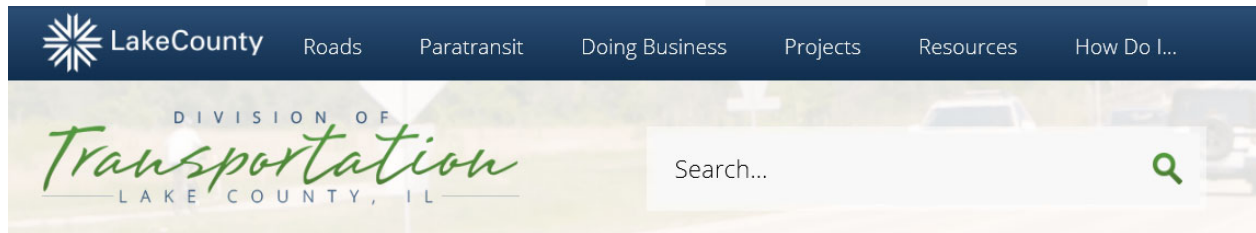
LCDOT Website



Bikeways info

www.lakecountyil.gov/191/Transportation

Get the BikeLakeCounty App



Use this link, or visit maps.lakecountyil.gov/bikelakecounty

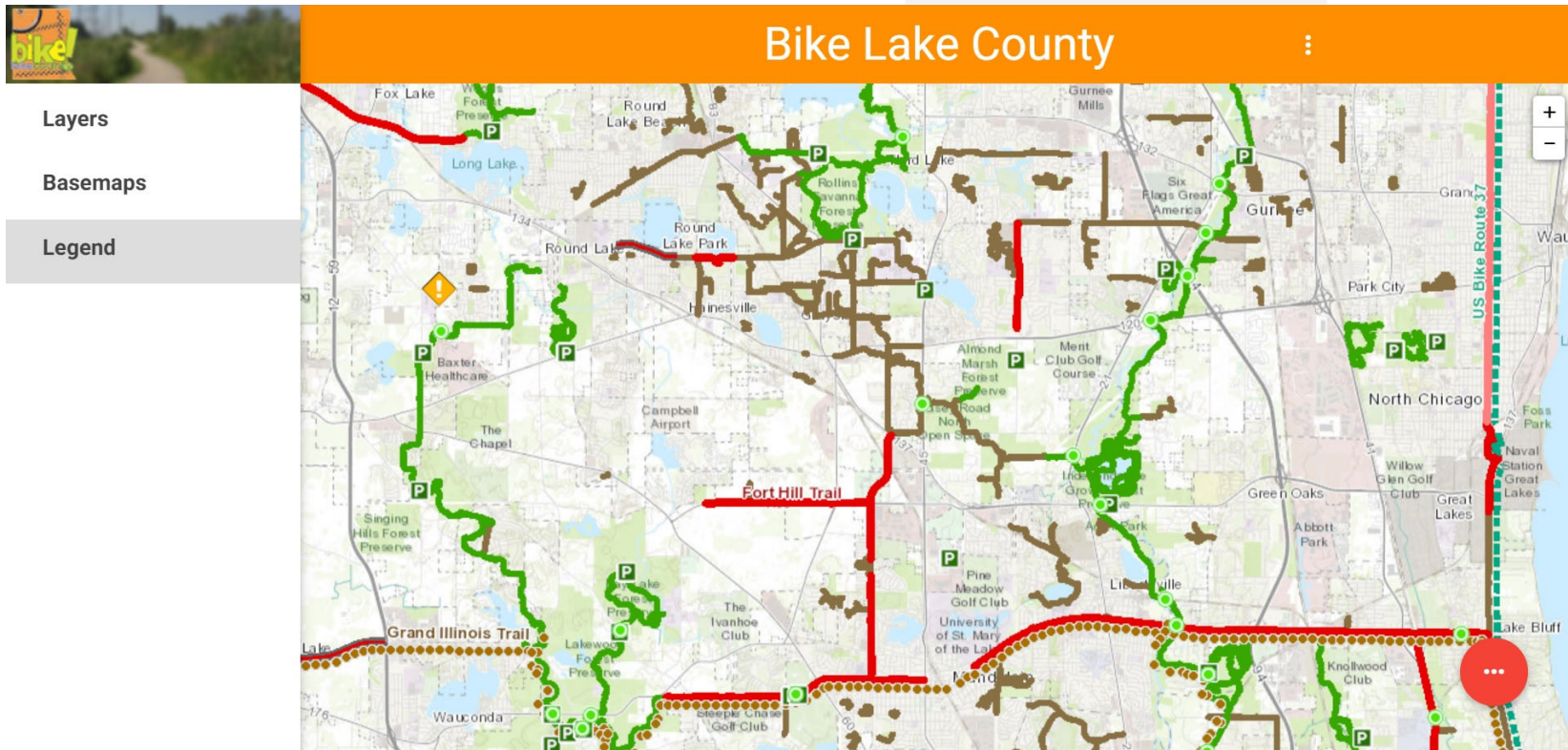
The image shows a webpage titled 'Bike Lake County'. On the left is a navigation menu with items like 'Annual Construction Program Map', 'Current and Upcoming Projects', 'PASSAGE Real Time Traffic', 'Bikeways', 'Adopt A Highway', 'Jurisdiction: Whose Road Is It?', and 'Roundabouts'. The main content area features a photo of a dirt path through a field, titled 'Skokie Valley Bike Path in Lake Forest'. Below the photo is a horizontal menu with 'About' (highlighted), 'Share Your Photos', 'Bike to Work', 'Clubs and Resources', 'Laws and Safety', and 'Future Plans'. A text block below reads: 'Did you know that the Lake County Division of Transportation (LCDOT) is more than just roads? LCDOT has about 60 miles of bike paths and bike lanes as part of the Lake County highway system and continues to consider non-motorized travel a high priority.' On the right side, there is a 'Bike Lake County' logo and a 'Go to the app' button highlighted with a yellow box. Below the button, text says: 'Explore Lake County's bike path and trail network using our new app, Bike Lake County, a mobile application designed to run on any device.' and a list of features: 'Locate yourself on the map' and 'Measure distances'.

[Go to the app](#)

Explore Lake County's bike path and trail network using our new app, Bike Lake County, a mobile application designed to run on any device.

- Locate yourself on the map
- Measure distances

A Look at the BikeLakeCounty App



[Go to the app](#)



Questions?

Emily Karry, LCDOT

📞 847-377-7502

✉️ ekarry@lakecountyil.gov

Randy Seebach, LCFPD

📞 847-968-3262

✉️ rseebach@LCFPD.org

A large, stylized L-shaped graphic composed of two overlapping rectangles. The top-left rectangle is a dark green color, and the bottom-right rectangle is a dark blue color. The text "Thank You!" is centered within the blue portion of the graphic.

Thank You!



Connect With Us!



lakecountyiil.gov/transportation
facebook.com/lcdot
twitter.com/lcdot
Instagram.com/lakecountydott
lakecountypassage.com



lcfpd.org
facebook.com/LCFPD
twitter.com/LCFPD
Instagram.com/LCFPD
youtube.com/user/LCFPD
flickr.com/groups/LCFPD