

Lake County
Division of Transportation
Lake County Forest Preserves
www.LCFPD.org

Lake County's Regional Trails

September 18, 2019
CMAP Bicycle and Pedestrian Task Force
Presented by Emily Karry, LCDOT
and Randy Seebach, LCFPD

1

OVERVIEW

- Introduce our agencies and provide background
- Provide history on the working relationship of our agencies
- Highlight accomplishments we've made together
- Make you want to check out paths and explore in Lake County!

2

LCFPD Mission

“
To preserve a dynamic and unique system of natural and cultural resources and to develop innovative education, recreation and cultural opportunities of regional value, while exercising environmental and fiscal responsibility.
”

Preservation, Restoration, Education and Recreation

Lake County Forest Preserves
www.LCFPD.org

3

LCFPD Trail History

DPRT (Des Plaines River Trail)

- Early 1960's – Initial properties purchased to protect flood plain
- Mid 1970's – Plans sketched out for multi-use trail along rivers' edge
- First section completed in 1980
- Final leg completed in fall of 2015
- 31.4-miles total
 - 31.4-miles completed/open

Millennium Trail

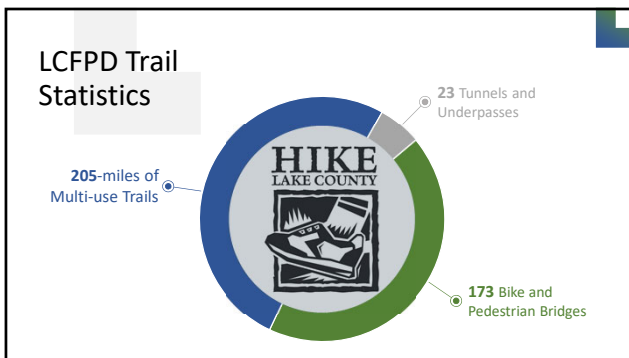
- Late 1990's – Hence the name "Millennium Trail"
- 41.4-miles total (planned)
 - 31-miles completed/open

Fort Hill Trail

- LCDOT/LCFPD partnership
- First section completed in fall of 2009
- 8.2-miles total (planned)
 - 6-miles completed/open



4



5

LCDOT Mission



To provide a safe, efficient and innovative transportation system to enhance mobility, economic development and quality of life in Lake County.

LakeCounty
Division of Transportation

6

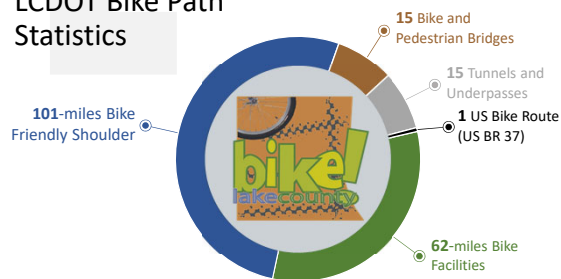
LCDOT Bike Path History

- Late 1980's first LCDOT path – Robert McClory Path
- Early 1990's – agreement with IDOT for North Shore Path
- Late 1990's to 2000's – Skokie Valley Path on ComEd property
- First long-range bicycle plan adopted June 2002 as part of County's 2020 Transportation Plan



7

LCDOT Bike Path Statistics



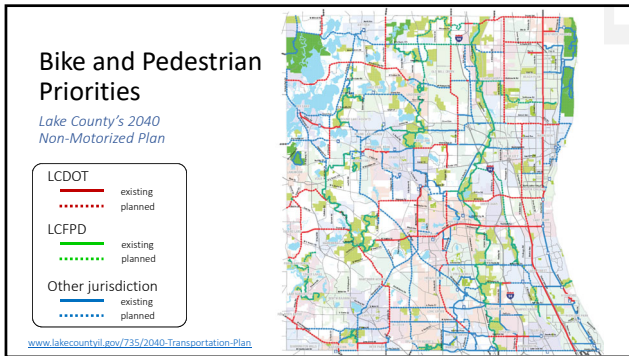
8

Robert McClory Path: US Bicycle Route 37

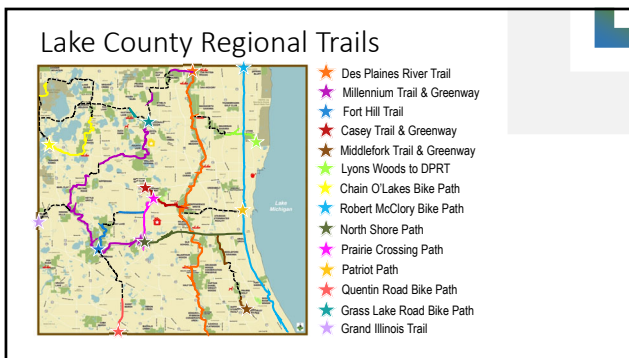
- Part of planned 900-mile route circling Lake Michigan
- 25+ miles through Lake County from Lake Cook Road to the Wisconsin border
- Route is part of 13,500 miles that currently are designated



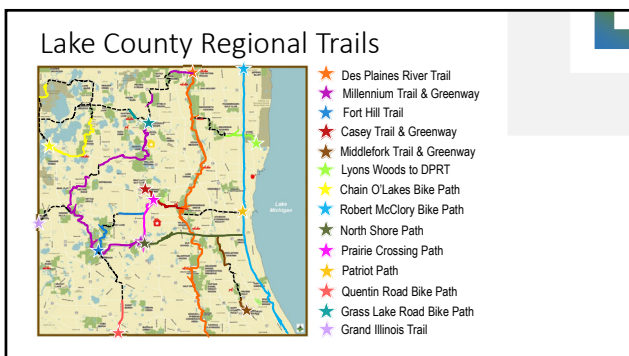
9



10



11



12

Lake County Regional Trails

When completed, these 14 regional trails will:

- Stretch 194.10-miles
- Connect 60 municipalities
- Connect 51 schools
- Connect 51 forest preserves
- Connect 118 parks
- Connect 17 Metra stations
- Connect 529 Pace bus stops



13

Other Agency Funding Partners


● Successful implementation of several bike and pedestrian projects with assistance from FHWA, IDOT, IDNR, ICC, CMAP and others



14

LCDOT's Non-Motorized Travel Study

- Completed in 2010
- Identified connectivity gaps
- Provided policy for investments



15

LCDOT/LCFPD Working Together

- Millennium Trail - Tunnels under Fairfield Road and IL 176 at Lakewood Preserve
- Various connections to Des Plaines River Trail
- Other opportunities along roadway improvement projects



16

Other Cooperative Projects

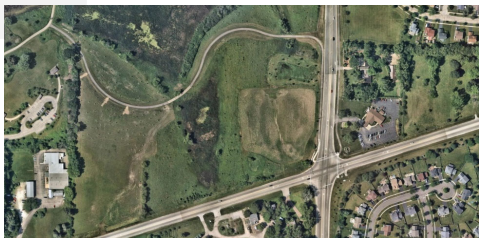
- Wadsworth Savanna and Delany Road – detention, water quality basin and restoration



17

Other Cooperative Projects

- Cedar Lake Road Improvements – Impervious area offsets, restoration and trail connection



18

Other Cooperative Projects


- Buffalo Creek Wetland Bank – Includes trail connections and restoration



19

LCFPD Current Project Highlights


- **Millennium Trail** – Route 45 underpass and trail connection to Ethel's Woods Forest Preserve
- **Multiple Small Trail Connections** – With several municipality partnerships



20

On the Horizon LCFPD Trail Projects

- Completion of Millennium Trail
 - 10.4-miles left
- Completion of Fort Hill Trail
 - 2.7-miles left
- Completion of Chain O'Lakes Bike Path
 - 13.3-miles left
- Currently funding not available
- Begin initial planning to connect the southwest part of Lake County



21

LCDOT Current Project Highlights

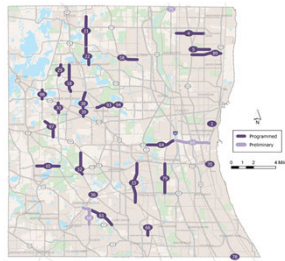
- Bike Path Wayfinding and Signage Study
- Quentin Road
- 14th Street
- Patriot Path
- Skokie Valley Path connection to Cook County



22

On the Horizon LCDOT Non-Motorized Improvements

- \$32M in non-motorized improvements
- 6% of 6-year project expenditures
- Bike paths
- Bike-friendly shoulders
- Sidewalks and sidewalk gap improvements
- Pedestrian accommodations



www.lakecountyll.gov/7775-3/year-highway-improvement-program

2019-2024 Highway Improvement Program

23

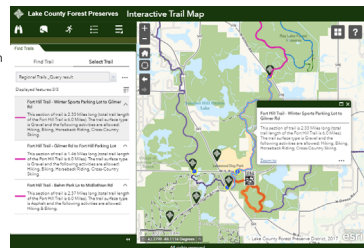
LCFPD Interactive Trail Map

You can locate trails and preserves, find activities and amenities, use GPS to find your location and navigate easily through preserves, all from your phone, tablet or desktop.

Provides trail information on:

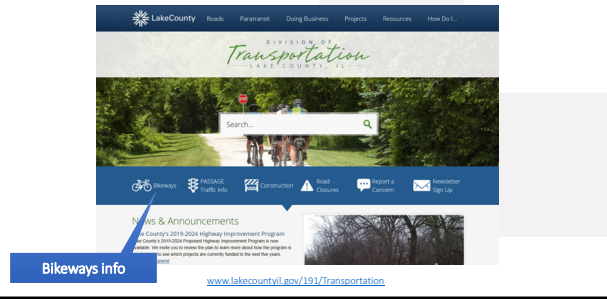
- Trailhead locations
- Length of trails
- Trail surface type
- Trail activities allowed
- Trail closures
- Underpass status

LCFPD website: www.lcfdp.org/maps



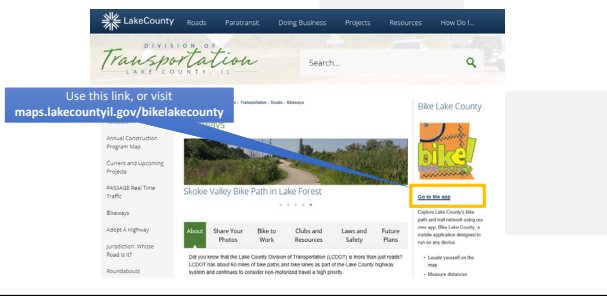
24

LCDOT Website



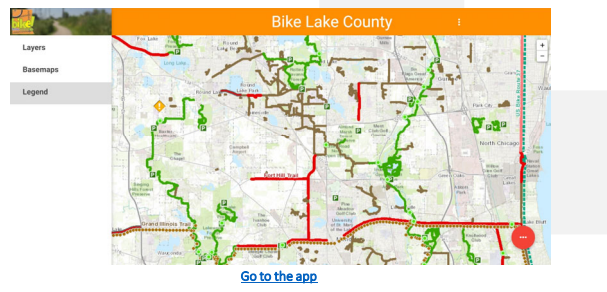
25

Get the BikeLakeCounty App



26

A Look at the BikeLakeCounty App



27

Slide 28 features a white background with a blue and green geometric design on the right. The text "Questions?" is in the top left, and "Thank You!" is in the bottom right. Contact information for Emily Karry and Randy Seebach is provided in the bottom left.

Questions?

Thank You!

Emily Karry, LCDOT | Randy Seebach, LCFPD
847-377-7502 | 847-968-3262
ekarry@lakecountyil.gov | rseebach@LCFPD.org

28

Slide 29 features a white background with a blue and green geometric design on the right. The text "Connect With Us!" is in the top left. It lists various contact methods and social media links for Lake County and Lake County Forest Preserves.

Connect With Us!

Lake County
Division of Transportation
www.LCFTD.org

Lake County Forest Preserves
www.LCFPD.org

lakecountyil.gov/transportation
facebook.com/lcdot
twitter.com/lcdot
Instagram.com/lakecountydor
lakecountypassage.com

lcfpd.org
facebook.com/LCFPD
twitter.com/LCFPD
Instagram.com/LCFPD
youtube.com/user/LCFPD
flickr.com/groups/LCFPD

29
