



Chicago Metropolitan Agency for Planning

Project Name: Poplar Creek Watershed Based Plan – Phase 1

Grant Recipient: Northeastern Illinois Planning Commission (NIPC)

Project Location: Poplar Creek Watershed

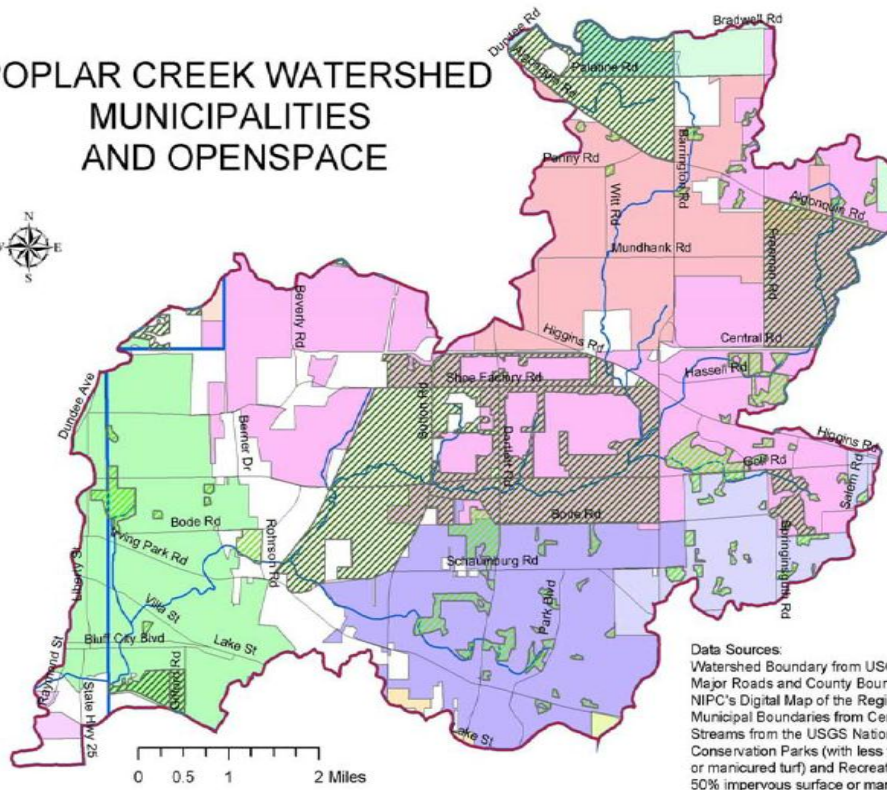
Project Summary: NIPC worked with the Poplar Creek Watershed Planning Committee to develop a Watershed Based Plan using the stream inventory prepared by NIPC and other best available information.

Poplar Creek Steering and Technical Advisory Committees developed a number of specific goals for the plan including the following:

1. Protect and restore aquatic habitat quality and quantity (29%)
2. Protect and restore terrestrial habitat quality and quantity (26%)
3. Protect water quality (24%)
4. Reduce flooding and flood damages (13%)
5. Improve recreational resources (9%)

The Integrated Management Plan for the Fox River Watershed in Illinois identified a strategy for protecting and improving the Fox River watershed. Because the watershed is so large, the Fox River Ecosystem Partnership (FREP) did not specify site specific strategies in its initial planning efforts. As part of this project, NIPC began to gather additional information at the subwatershed level to integrate into subwatershed Watershed-Based Plans. Outside of this grant, FREP and all of its members are working to raise awareness and increase funding to help implement the Plan. A copy of the Poplar Creek Watershed Plan may be found by visiting:
<http://foxriverecosystem.org/planning.htm>.

POPLAR CREEK WATERSHED MUNICIPALITIES AND OPENSOURCE



- Legend**
- Poplar Creek Watershed
 - County Boundaries
 - Major Roads
- Municipality Name**
- Barrington Hills
 - Bartlett
 - East Dundee
 - Elgin
 - Hanover Park
 - Hoffman Estates
 - Inverness
 - Schaumburg
 - South Barrington
 - South Elgin
 - Streamwood
 - Streams
- Open Space**
- Recreational Parks
 - Conservation Parks

Data Sources:
 Watershed Boundary from USGS;
 Major Roads and County Boundary from NIPC's Digital Map of the Region, Version 1.0;
 Municipal Boundaries from Census 2000 (TIGER/LINE);
 Streams from the USGS National Hydrography Dataset;
 Conservation Parks (with less than 50% impervious surface or manicured turf) and Recreation Parks (with more than 50% impervious surface or manicured turf) from NIPC's 1995 1:24,000 Land Use Inventory.

Date of Map Creation: September 2, 2003

* Note, this project is not identified on the 319 Project location map.