

Pavement Data Collection and Pavement Management System Implementation for the Village of Bellwood

Prepared For:
Chicago Metropolitan Agency for Planning
Village of Bellwood, Illinois

Prepared By:
Applied Research Associates, Inc.
100 Trade Center Drive, Suite 200
Champaign, IL 61820
(217) 356-4500 | www.ara.com/infrastructure

June 2019

Table of Contents

1. INTRODUCTION	1
1.1 Background	1
1.2 Project Kick-off and Records Review	1
1.3 Network Segmentation	1
1.4 Traffic Data.....	2
2. FIELD DATA COLLECTION AND ASSESSMENT	3
2.1 Digital Survey Vehicle (DSV).....	3
2.2 Pavement Condition Index Procedure	4
2.3 Pavement Network and Current Condition	7
3. PAVEMENT MANAGEMENT SYSTEM IMPLEMENTATION	11
3.1 PAVER™ Pavement Management System Overview	11
3.2 Pavement Performance Model.....	12
3.3 Treatment Matrix.....	13
3.4 Unit Costs	15
4. MAINTENANCE AND REHABILITATION ANALYSIS	15
4.1 Funding Scenario Results	16
4.2 Consequence of Local Distress Maintenance	18
5. SUMMARY AND RECOMMENDATION	18
5.1 Summary	18
5.2 Recommendations	19
APPENDIX — A	21

1. INTRODUCTION

1.1 Background

Chicago Metropolitan Agency for Planning (CMAP) selected the ARA team to develop pavement management plans for a selected number of local agencies from the CMAP region, including additional data collection for non-Federal Aid routes. The pavement management plans will provide participating local agencies with a document that describes the importance and types of pavement preservation, the current condition of pavement, scenarios evaluating the cost to meet different network-level pavement conditions, and a recommended capital plan based on the selected pavement condition/spending scenario. The pavement management plan includes summary tables, charts, graphics, and maps depicting current pavement condition and forecasted pavement conditions under different scenarios. CMAP staff managed the development of the pavement management plans in conjunction with Village of Bellwood.

As part of this project, ARA has evaluated the current condition of the Village of Bellwood's roadway pavement network, implemented pavement management system (PMS) using PAVER™ software, forecasted condition, generated budget scenario, and recommended future maintenance and rehabilitation (M&R) plans.

1.2 Project Kick-off and Records Review

The ARA team met with the Village of Bellwood and CMAP representatives for a project kick-off meeting on September 5, 2018. Based on the kick-off meeting and documents provided by the Village and CMAP, pavement data was collected on October 9, 2018. The GIS shapefile was provided by the CMAP and was used as the base map for the field data collection. The network segmentation provided in the GIS shapefile was the primary source of roadway inventory for the pavement management database. The Village responded with valuable information to the questionnaire that ARA developed for an understanding of the PMS inputs available from the Village and any specific project requirements. In addition, the Village provided the M&R activities performed in 2019 and their annual budget from 2019 through 2023 to plan future M&R activities. The following documents were reviewed as part of this effort:

- GIS shapefile for local agency (CMAP)
- Network Segmentation for collection (CMAP)
- Completed Questionnaire (Village of Bellwood)

1.3 Network Segmentation

The Village of Bellwood manages approximately 43.3 miles of roadway pavements, consisting primarily of asphalt pavements. The pavement network was divided into 484 segments based on the feedback provided by the Village. Figure 1 shows the network segmentation that was approved by the Village.



Figure 1. Village of Bellwood Roadway Network Segmentation.

Table 1 displays the distribution of network length based on functional class. As observed in Table 1, majority of the roadway network is comprised of residential streets.

Table 1. Village of Bellwood’s Roadway Network Distribution.

Network/Functional Class	Length	Unit
Arterials	4.6	miles
Collector	3.8	miles
Residentials	34.9	miles
Total Network	43.3	miles

1.4 Traffic Data

Average daily traffic (ADT) data for the Village of Bellwood network was obtained from the Illinois Department of Transportation (IDOT) transportation management system

(<http://www.gettingaroundillinois.com/gai.htm?mt=aadt>). Table 2 shows traffic data based on the functional class of the streets. Traffic volumes range from 1,900 to 18,600 vehicles per day. Figure 2 shows annual average daily traffic (AADT) data for the individual pavement sections.

Table 2. Summary of Traffic Data.

Functional Class	Maximum AADT in 2018	Minimum AADT in 2018
Arterials	18,600	6,500
Collector	8,100	1,900
Residential	4,500	N/A

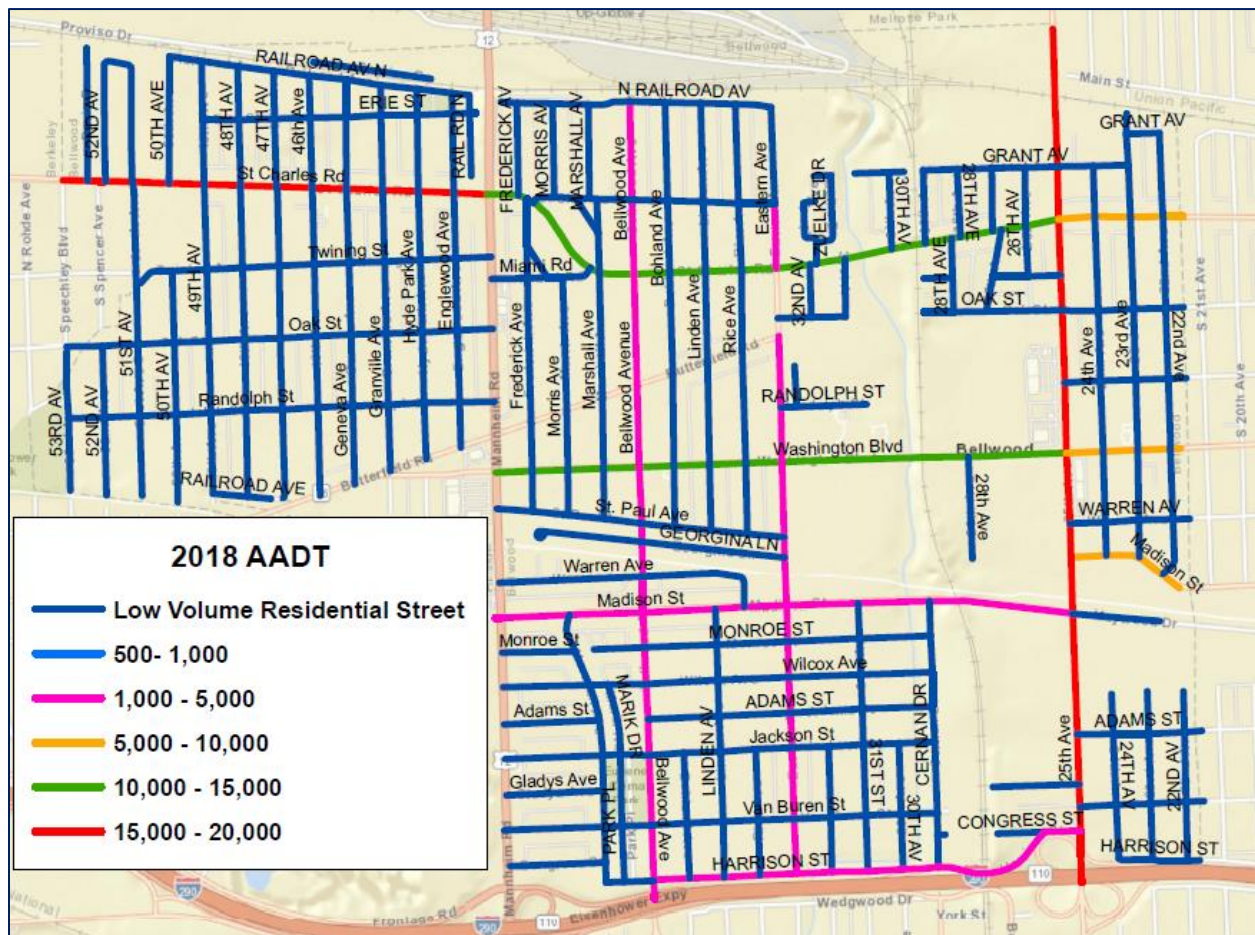


Figure 2. Village of Bellwood’s Annual Average Daily Traffic Data.

2. FIELD DATA COLLECTION AND ASSESSMENT

2.1 Digital Survey Vehicle (DSV)

ARA collected geo-referenced images of the entire Village of Bellwood roadway network using the DSV on October 9, 2018. ARA’s DSV equipped with the Laser Crack Measurement System (LCMS), shown in

Figure 3, captures images at 20-ft intervals. Each image is linearly referenced with the DSV's onboard distance measuring instrument (DMI) and associated global positioning system (GPS) coordinates. For two lane County highways, ARA collected images in a single direction. In four-lane pavement sections, data was collected in the outermost lane in both directions.



Figure 3. ARA's Laser Crack Measurement System.

The LCMS captures enhanced right-of-way images using a 360° camera system. The images were used to assess the surface condition of the pavement using the Pavement Condition Index (PCI) methodology in accordance with ASTM D6433. In addition to the images, sensor collected data was collected including International Roughness Index (IRI) and rutting for all the segments.

2.2 Pavement Condition Index Procedure

The pavement condition index (PCI) is a measurement of pavement condition which ranges from 0 to 100. This is an industry standard defined in ASTM D6433. A newly constructed pavement will have a PCI of 100 whereas a failed pavement will have a PCI of 20 or less. After the construction of pavements, the condition of pavement starts deteriorating with time due to traffic loads and volumes, climate, constructions materials, and age.

PCI Value	Pavement Rating
100	Very Good
80	Good
60	Fair
40	Poor
20	Very Poor
0	Very Poor

Figure 4. Pavement Condition Category Based on the PCI Value.

A PCI survey allows users to compare all pavements on a common scale and provides an index for monitoring pavement deterioration and treatment selection during the PMS analysis. Typically, PCI surveys are conducted foot-on-ground in the field. The modified version allows the use of digital images to perform the survey in an office environment and still provide the highest detail of distress rating.

ARA’s LCMS system identifies the pavement distresses and reports the type, severity, and extent of key pavement distresses, as shown in Figure 5. Some sample pavement surface images with representative PCI values are shown in Figure 6.

Ten percent of the surveyed sections were subjected to an internal quality assurance survey by an independent surveyor. After completion of the PCI calculation, visual checks were performed to ensure that the PCI values are representative of the surveyed images.

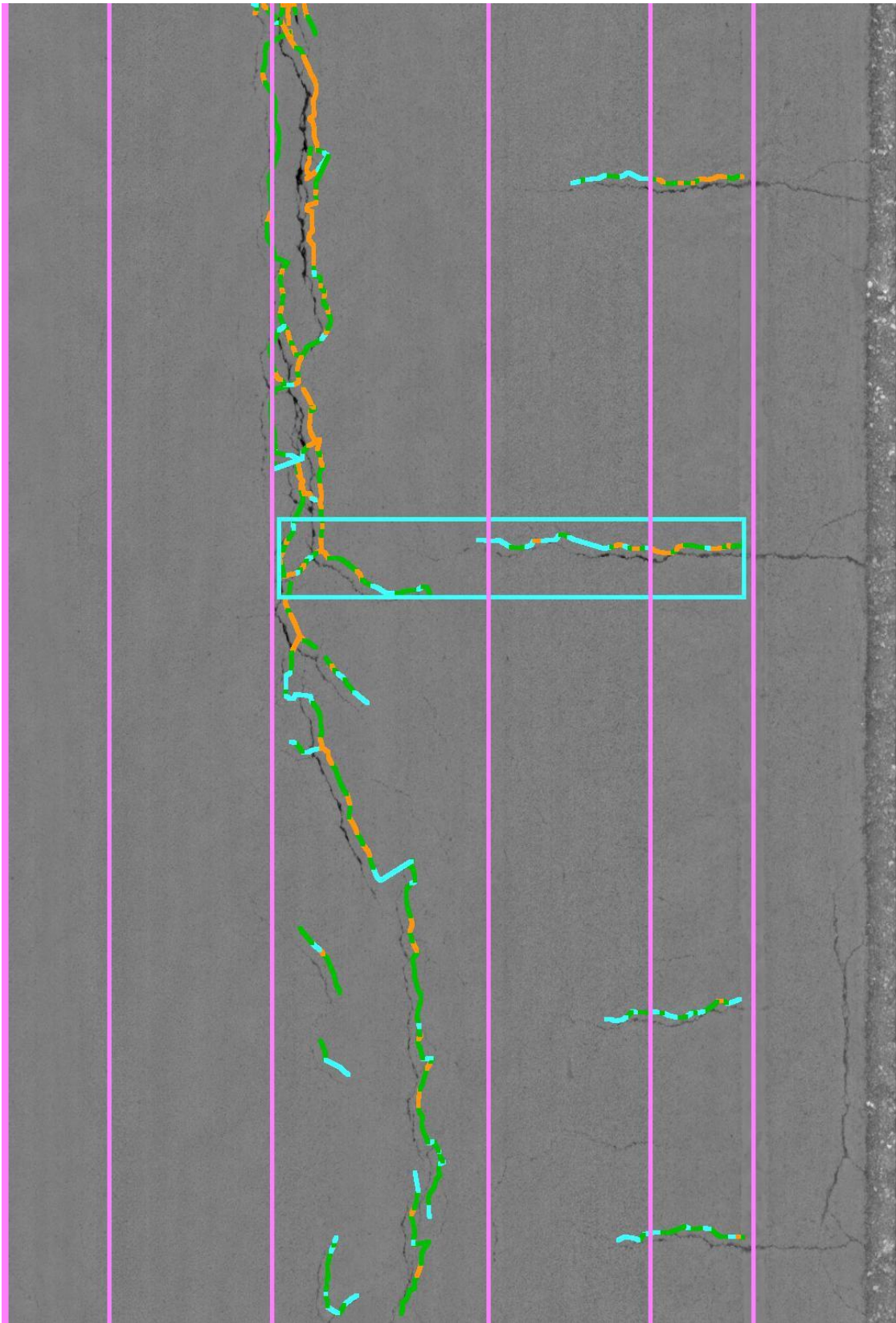


Figure 5. Pavement Distress Detection Using LCMS System.



Figure 6. Sample Pavement Distress Images with Different PCI Values.

2.3 Pavement Network and Current Condition

After performing an automated condition survey with the collected images, the inspection data was imported into the PAVER™ software. Based on the October 2018 pavement condition survey, the weighted average PCI of the network is 38.5 which represents the pavement network is in poor condition. The arterial pavement sections are in fair condition with an average PCI value of 45.8. The

collector pavement sections comprise 71% of the network, and are in fair condition with an average PCI value of 43.2. Major part of the network consists of residential streets with an average PCI value of 35.8. The current pavement condition based on the functional class can be summarized as shown Table 3. Figure 7 displays the current pavement condition distributions based on functional class.

Table 3. Pavement Functional Class and Current PCI

Section Rank	% Pavement Area of the Network	% Area of Network in Poor and Very Poor Condition	Wt. Avg. PCI
Arterials	18.0	46.0	45.8
Collector	11.0	43.0	43.2
Residential	71.0	60.0	35.8

Figure 8 shows pavement condition rating for the Village of Bellwood network. From Figure 8, it can be seen that major roads such as St. Charles Rd, part of Washington Blvd, and Madison St are in 'poor' or 'very poor' condition whereas part of Washington Blvd is in 'very good' condition.

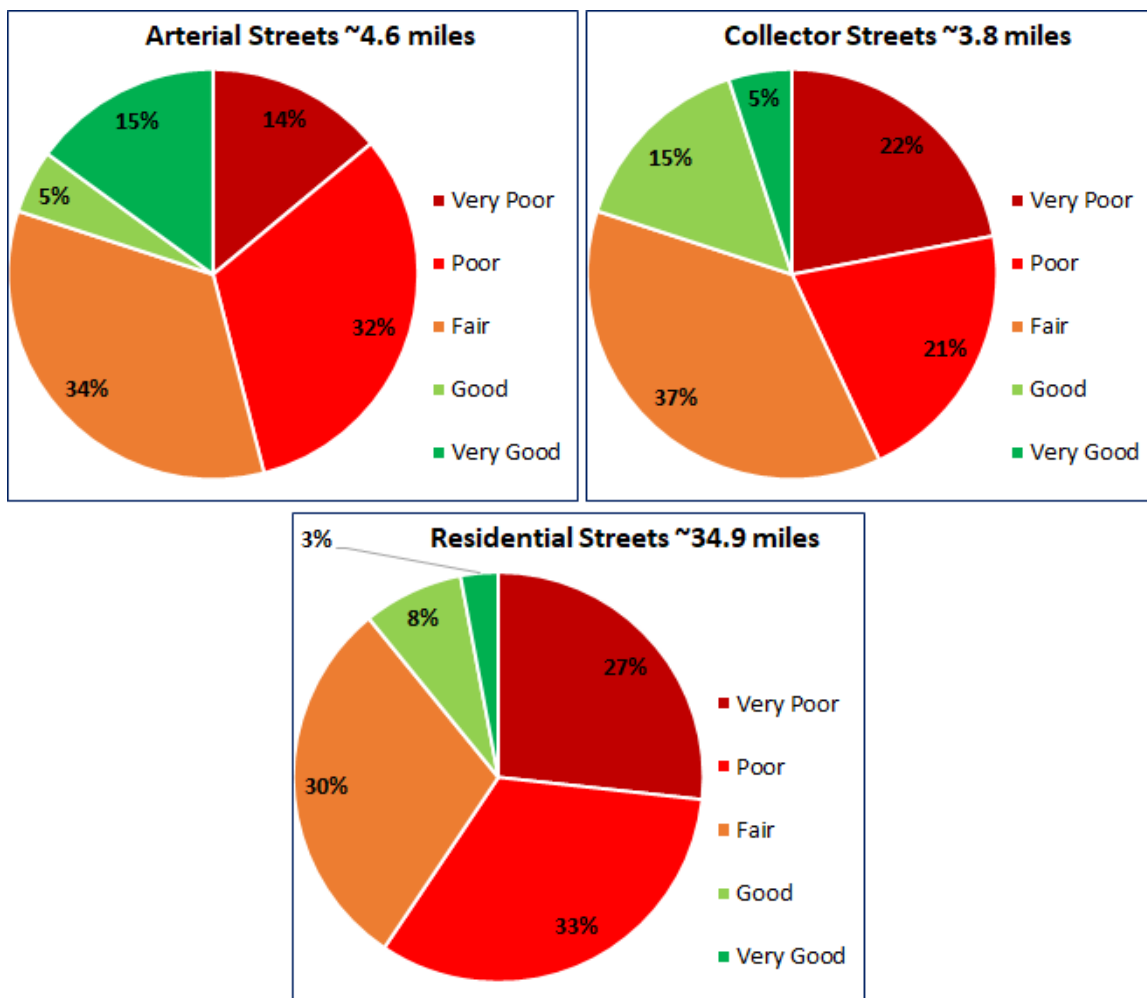


Figure 7. Pavement Condition Distribution Based on Functional Class.

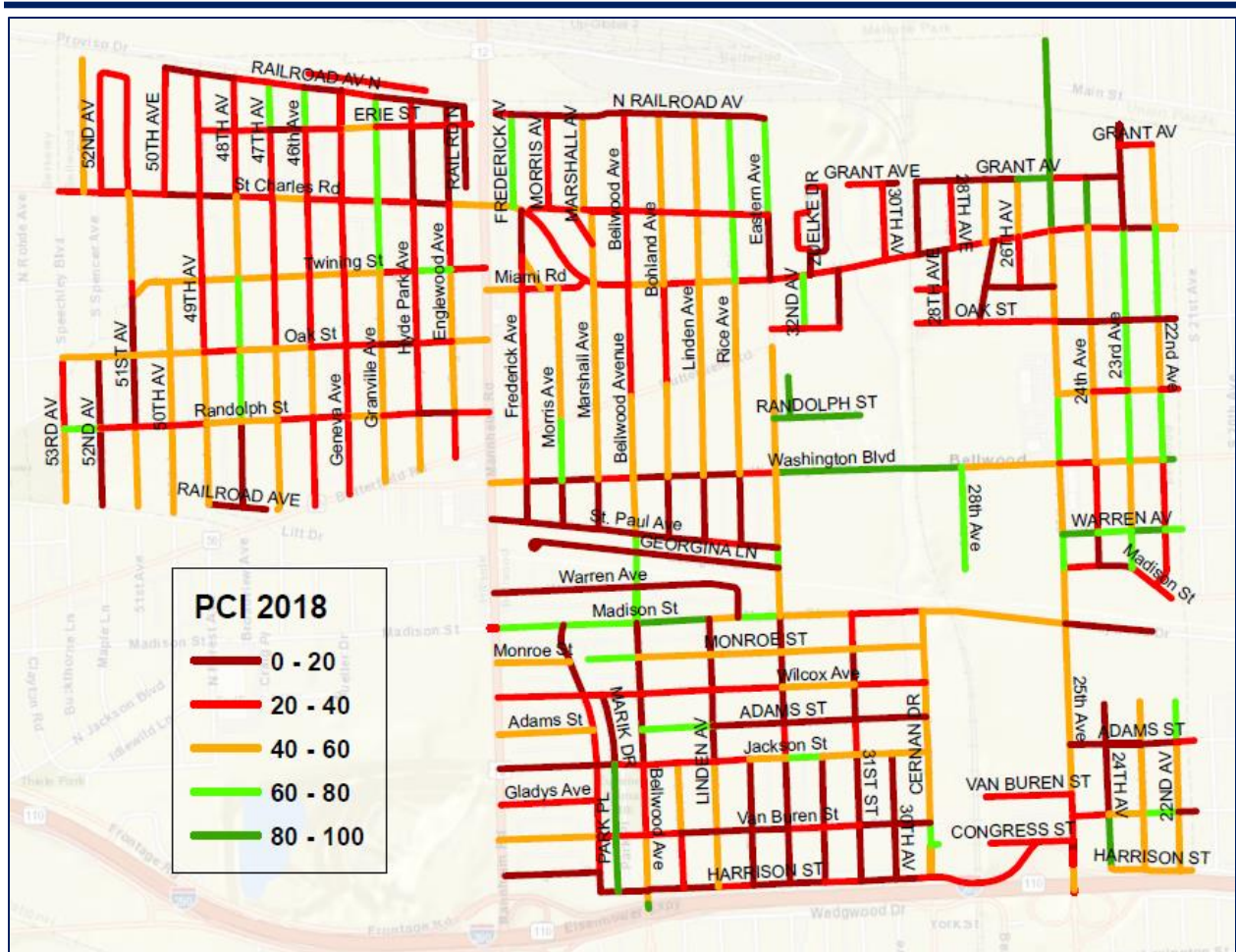


Figure 8. Village of Bellwood’s Current Pavement Condition Ratings.

Notable collector streets such as Harrison St and part of Eastern Ave are in ‘poor’ or ‘very poor’ condition. Figure 9 and Figure 10 show the distribution of network pavement area based on pavement current condition and average pavement condition based on functional class, respectively. In Figure 9, it can be observed that about 55% of the network pavement area is in ‘poor’ and ‘very poor’ condition. It can also be seen that about 31% of the network is in ‘fair’ condition whereas about 14% of the network is in ‘good’ and ‘very good’ condition.

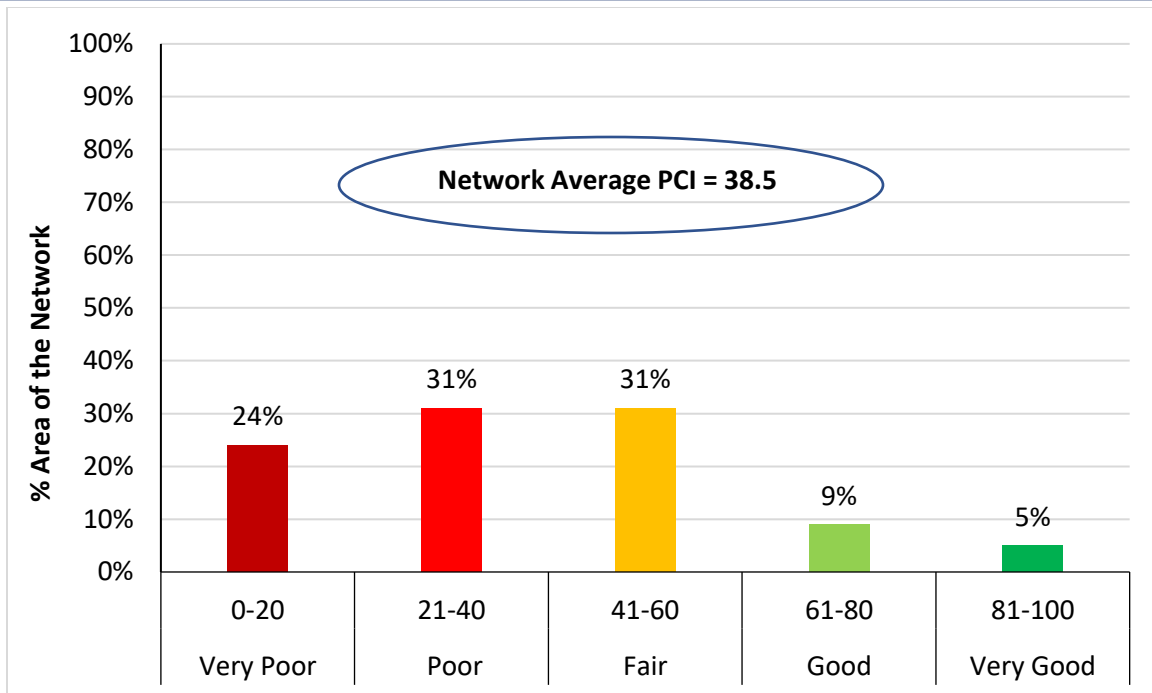


Figure 9. Distribution of Network Pavement Area Based on Pavement Condition.

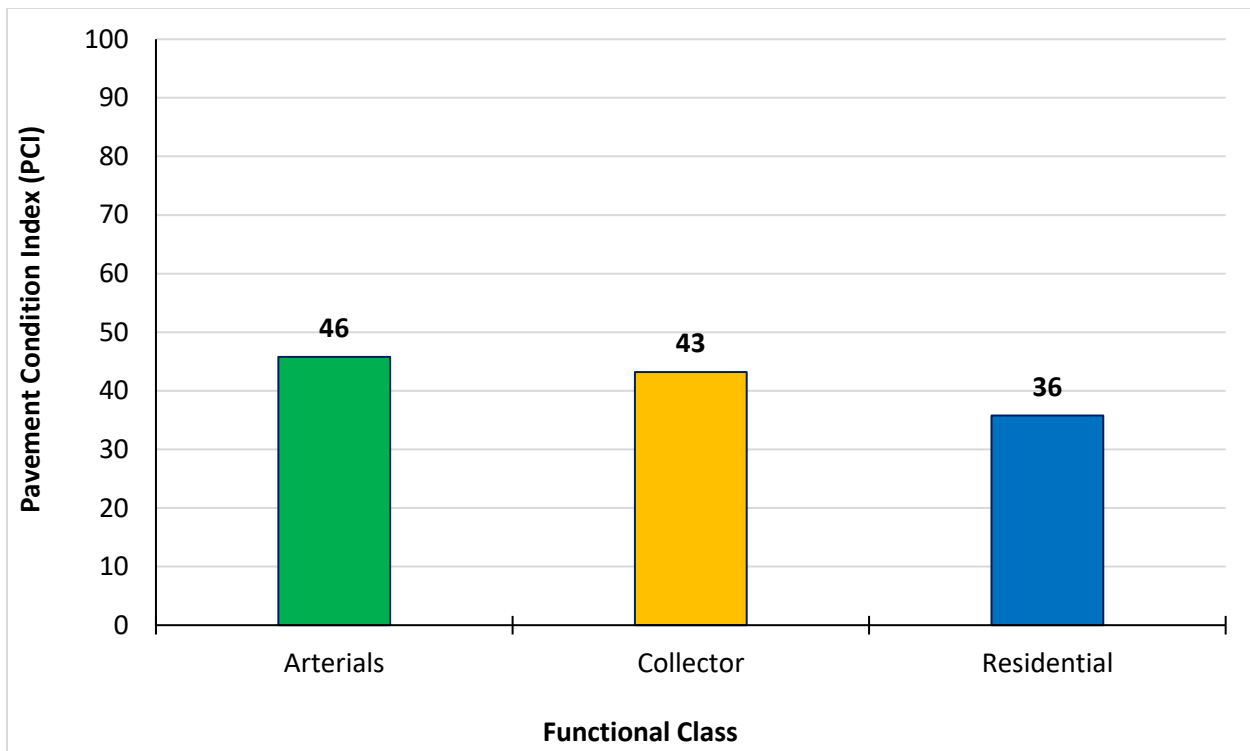


Figure 10. Weighted Average Pavement Condition Index (PCI) Based on Functional Class.

3. PAVEMENT MANAGEMENT SYSTEM IMPLEMENTATION

The ARA team discussed preliminary results of the PMS analysis with the Village and CMAP on May 31, 2019. ARA presented pavement performance models, treatment matrix, unit costs, and consequences of several funding scenarios. Based on the Village's feedback on PMS analysis, the ARA team updated the PMS analysis and updated results are presented in this section.

ARA used PAVER™ pavement management software to implement a pavement management system (PMS) for the Village of Bellwood. PAVER™ provides pavement management capabilities to: (a) develop and organize the pavement inventory, (b) assess the current condition of pavements, (c) develop models to predict future conditions, (d) report on past and future pavement performance, (e) develop scenarios for M&R based on budget or condition requirements, and (f) plan projects.

3.1 PAVER™ Pavement Management System Overview

Figure 11 shows the various modules of the PAVER™ software which includes:

- Inventory — The inventory module is designed based on a hierarchical structure including network, branch, and sections where section is the smallest pavement unit managed by the agency. This structure allows users to easily organize their inventory while providing numerous fields and levels for storing pavement data.
- Work History — Similar to the inventory module, work history module also follows the hierarchical structure. To updated a pavement section's attribute or work history, it is required to have the network, branch, and section information.
- Inspection — In the inspection module, pavement can be surveyed manually or the automated survey data can be imported and modified, and finally PCI is being calculated.
- PCI Family Model— The PCI family model module is used to create pavement performance model. Basically, it uses the historical pavement condition and age data.
- Condition Analysis — The condition analysis module is used to analyze or predict the condition of the entire or part of the network. This feature reports past conditions based on prior interpolated values between previous inspections and projected conditions based on prediction models.
- M&R Family Models — M&R Family Models module is used to select treatment, treatment consequences, unit costs, and treatment matrix.
- M&R Working Plans — M&R working plans module allows to create multi-year network and project level M&R planning, scheduling, and budgeting. This module allows the users to create consequence of current funding level and generates funding scenarios for targeted PCI, backlog eliminations, etc.
- Reports — This module facilitates generation of summary charts, latest condition map, and user defined reports. The users can pick and choose the attributes fields to create a report.

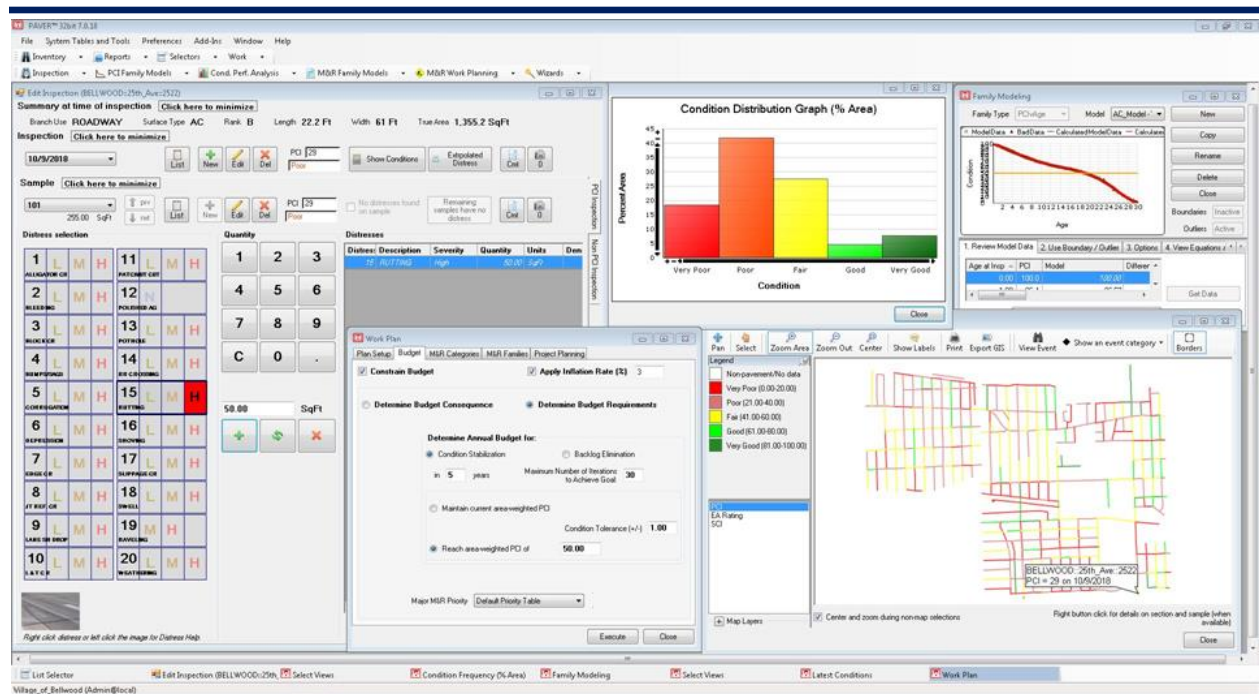


Figure 11. PAVER™ Overview.

3.2 Pavement Performance Model

A PMS is only useful for making decisions if performance models can be established, validated, and relied upon to accurately forecast pavement conditions into the future. A pavement performance model is developed based on the date of construction of a road, the types and thicknesses of pavement materials, the traffic level, and the pavement condition. The pavement performance model becomes more accurate with multiple pavement condition ratings, as the model gets calibrated and adjusted to match the conditions present at the time in a pavement’s life cycle.

The PCI Family Models module in PAVER™ helps to identify and group pavements of similar construction that are subjected to similar traffic, weather, and other factors affecting pavement performance. The pavement condition historical data are used to build a model that can accurately predict the future performance of a group of pavements with similar attributes.

For the Village of Bellwood, a PCI family model was developed for the asphalt surfaced pavement. As the pavement age data was not available, the pavement performance model for the Village of Bellwood was developed based on experience from similar projects in Illinois, and the Chicagoland area. The reliability of the pavement performance model is expected to increase with future pavement inspection and age data. Figure 12 shows the PCI family model for the asphalt surfaced streets.

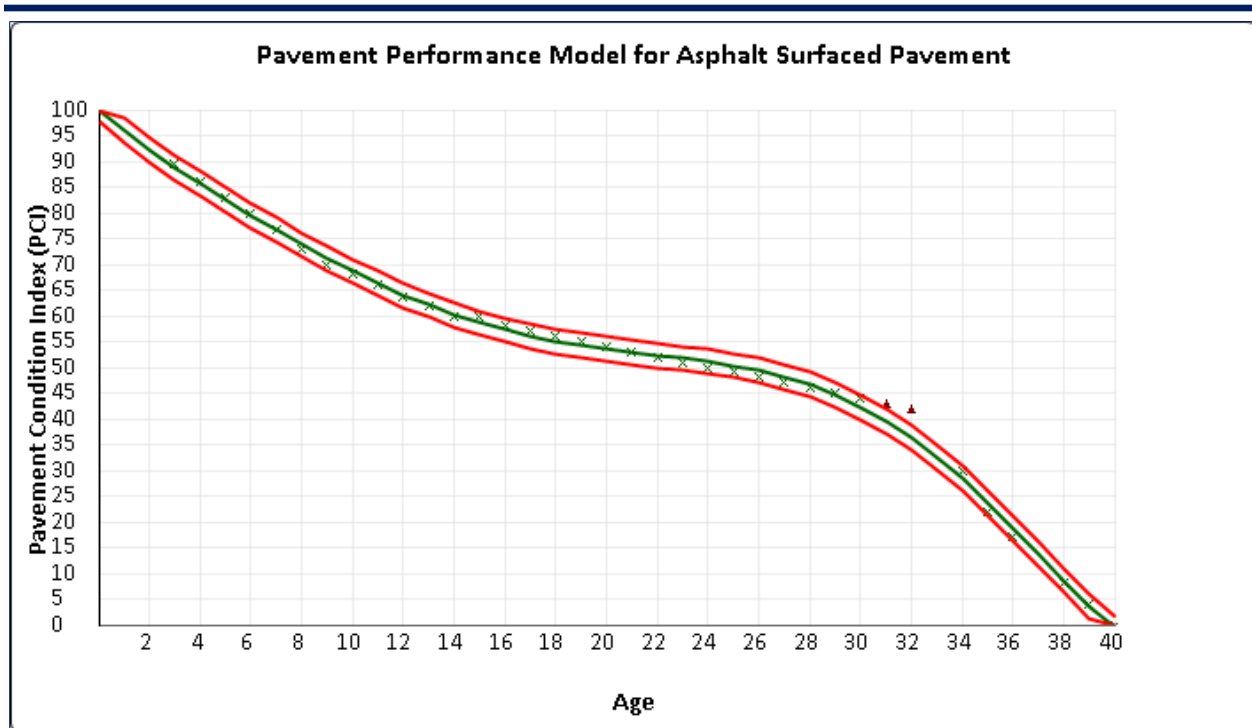


Figure 12. PCI Family Model for Asphalt Surfaced Streets.

3.3 Treatment Matrix

Based on the pavement preservation and rehabilitation techniques currently used in Village of Bellwood, and discussion with the Village, ARA developed a treatment matrix that defines when a treatment will be performed based on PCI values and functional class. In PAVER™, critical PCI is defined as the PCI value at which the rate of PCI loss increases with time and the cost of applying localized preventive maintenance increases significantly. The M&R Family Assignment Tool is used to designate sections to receive specific M&R work, including:

- Localized Stopgap
- Localized Preventative, and
- Major M&R

The *Localized Stopgap* (PCI < Critical) option is used to indicate the use of Safety M&R policies, which allows PAVER™ to plan localized stopgap M&R work (pothole filling, etc.) on areas where the PCI is below the critical level. The *Localized Preventative* M&R (PCI ≥ Critical) option allows PAVER™ to plan M&R work in localized areas where the PCI is above critical. In this option, life extending credit, in years, can be given to any localized preventative work. Applying any preventative work where the PCI is still above critical will save money and improve the pavements life. The *Major M&R* option allows PAVER™ to plan any overlay or other major work where the resulting pavement has a PCI of 100.

Table 4. Treatment Matrix for Arterial, Collector, and Industrial Streets.

Treatment Matrix for Arterial and Collector Streets			
PCI	Stopgap	Localized Preventive	Major M&R
0	Patching & Repairs	Do Nothing	Reconstruction
10			
20			
30			
40			
50	Do Nothing	Crack Seal and Patching	2" Mill and Overlay
55			
60			
70			
80			
90	Do Nothing	Do Nothing	Do Nothing
100			

Table 5. Treatment Matrix for the Residential Streets.

Treatment Matrix for Residential Streets			
PCI	Stopgap	Localized Preventive	Major M&R
0	Patching & Repairs	Do Nothing	3" Mill and Overlay
10			
20			
30			
40			
50	Do Nothing	Crack Seal and Patching	2" Mill and Overlay
55			
60			
70			
80			
90	Do Nothing	Do Nothing	Do Nothing
100			

As observed from Table 4 and Table 5, pavement sections with PCI greater than the critical PCI (50) are selected for localized preventive treatment such as crack sealing or patching. Sections with PCI values less than critical PCI are assigned to stopgap policies related M&R work such as patching and repair. For major M&R, 2-inch mill and overlay and reconstruction are considered for the arterial and collector streets. However, based on the Village’s recommendation, 3-inch and 2-inch mill and overlay option were planned for the residential streets.

3.4 Unit Costs

Using treatment information discussed with the Village of Bellwood, ARA determined the typical unit costs for each M&R item, listed in Table 6, based on the ARA's experience with agencies in the Chicagoland area. These costs were discussed with the Village during the meeting on May 31, 2019. Costs were determined based on a square foot or linear foot basis. The unit costs used for PAVER™ analysis for 2019, are shown in Table 6. To run the PMS analysis in future, the unit costs can be updated based on the available unit price of materials and construction.

Table 6. Treatment Unit Costs for the Village of Bellwood.

Treatment Type	Cost	Units
No Localized M & R	\$0.00	SqFt
Crack Sealing - AC	\$1.00	Ft
Patching - AC Shallow	\$4.50	SqFt
Patching - AC Deep	\$7.00	SqFt
2" Mill and Overlay	\$1.66	SqFt
3" Mill and Overlay	\$2.50	SqFt
Reconstruction - AC	\$4.20	SqFt

4. MAINTENANCE AND REHABILITATION ANALYSIS

Maintenance and rehabilitation (M&R) analysis can be performed in PAVER™ to generate an optimized work plan by assuming an annual funding level or by specifying a target PCI.

For the Village of Bellwood, the M&R funding analyses were based on the roadway inventory approved by the Village, unit costs discussed with the Village, and the Village's existing Major M&R policies were used in the analyses. An inflation rate of 3% was used for all analyses. PCI family curves were developed based on existing pavement age and collected condition data. The critical PCI value was set to 50 for all streets. The critical PCI value represents the condition at or below which Major M&R is recommended. The following five-year M&R funding scenarios, in order of highest cost option to lowest cost options, were evaluated on the Village's pavements:

- Eliminate backlogs (unlimited funding)
- Funds to meet potential performance targets (PCI = 50)
- Maintain current condition (PCI =38.5)
- Add moderate funding relative to current levels (\$600K/year)
- Keep funding level current (\$450K/year)
- Do nothing (\$0/year)

4.1 Funding Scenario Results

Using the M&R Working Plans module, the funding level scenarios were generated. For the current funding level (\$450K/year), it was assumed that \$150K/year would be allocated for stopgap and localized preventive distress maintenance, whereas \$300K/year would be spent for major M&R activities. Figure 13 displays the effect of different funding level on the average pavement condition of the Village of Bellwood network. From Figure 13, it can be seen that current funding level (\$450K/Year) is less than to maintain current condition (\$800K/Year) over five years. Increasing the funding to \$600K/year will result in a decrease of average network PCI by 3 points compared to 2018 PCI. Providing budget to eliminate backlogs results in an average PCI of 85 after five years, while not spending any funds on the M&R program will deteriorate the network to an average PCI of 23.5 after five years.

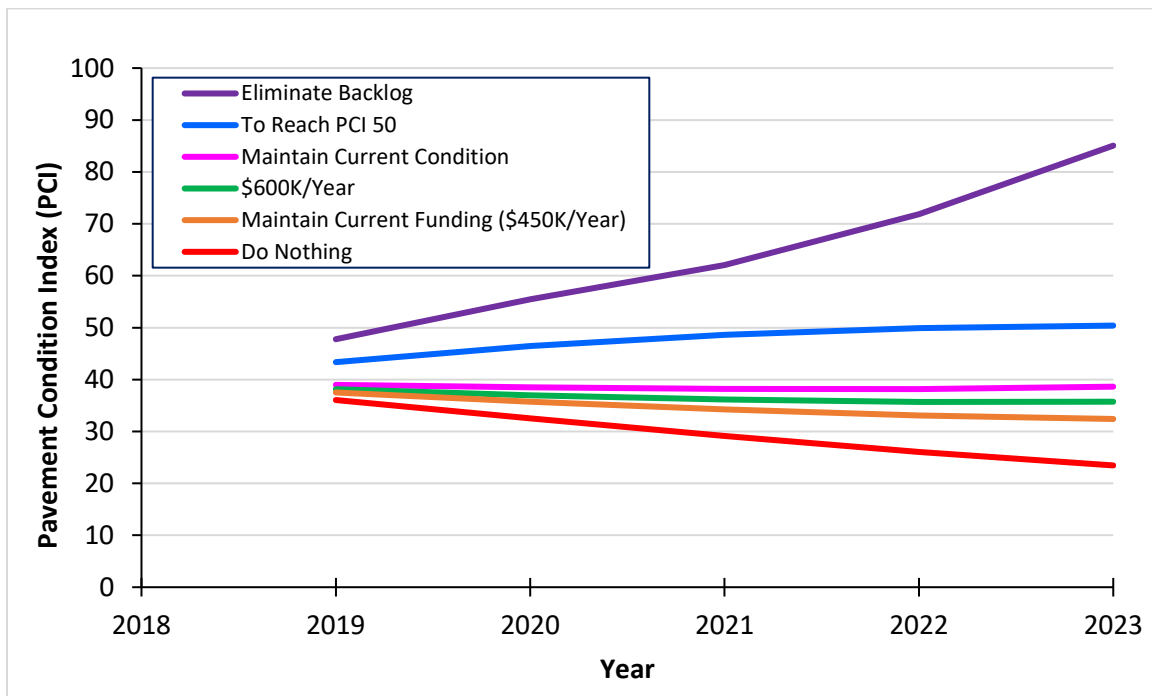


Figure 13. Effect of Funding Level on Village’s Pavement Condition.

Figure 14 shows the comparison of funding levels to achieve PCI targets and provided funding. To eliminate backlogs, it is required to invest about \$4.0M/year for next five years. To achieve average network PCI of 50, the required investment is about \$3.3M/year for the next five years.

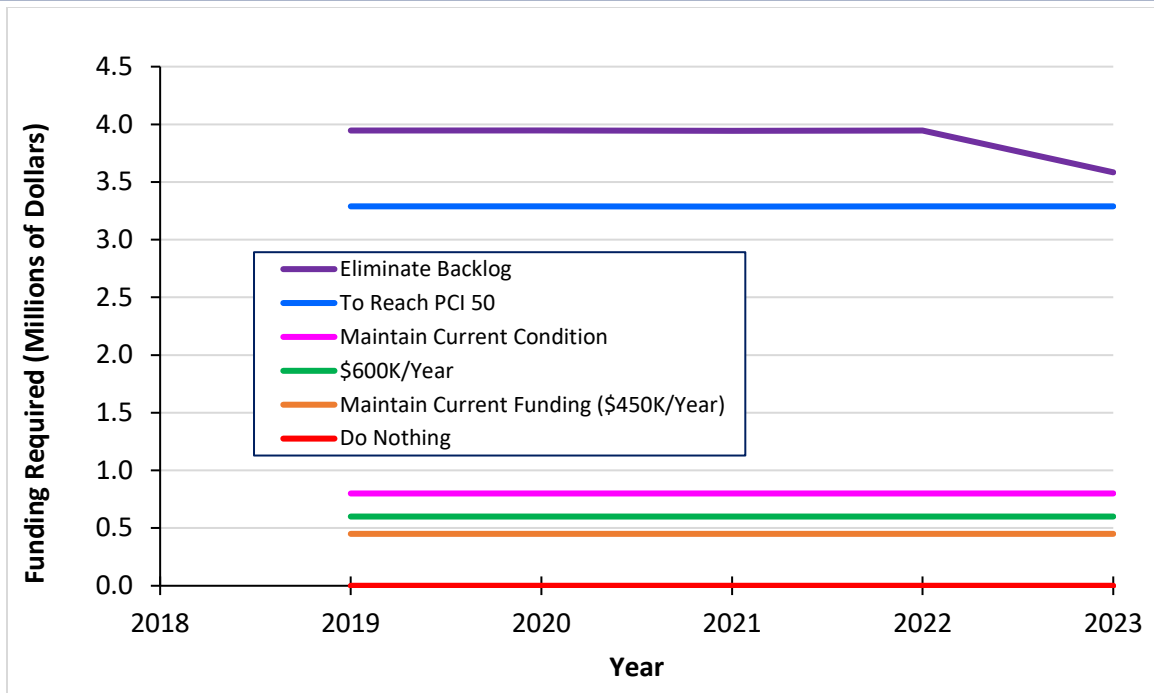


Figure 14. Required Funding Per Year to Achieve Different Condition Target.

The Village of Bellwood provided information on the work performed on segments in 2019 as shown in Table 7. Based on the Village’s recommendation segments were committed to the 2019 M&R analysis with current funding level. The attributes of the committed projects are shown in Table 7.

Table 7. Committed Projects for Year 2019.

Branch ID	From	To	Length (ft)	Width (ft)	PCI	Section Rank
GRANT_AV	28th Ave	29th Ave	318.3	27.0	15	Residential
GRANT_AV	26th Ave	27th Ave	308.7	27.0	1	Residential
GRANT_AV	27th Ave	28th Ave	325.4	27.0	11	Residential
HARRISO_ST	Congress St	Cernan Dr	1159.4	24.0	19	Residential
HARRISO_ST	25th Ave	Congress St	332.9	24.0	18	Residential

The 2019 M&R plan, 5-Year major M&R plan, and 5-Year localized M&R plan are provided in Appendix A. Figure 15 shows the network condition distribution for the next five years with current funding level. Currently about 55% of the pavement network is in ‘poor’ or ‘very poor’ condition. However, with current funding the average PCI of the network is expected to be 32.4 in 2023; a decrease of 6.2 PCI points from the 2018 average PCI. Moreover, with the current funding level, the amount of ‘poor’ and ‘very poor’ condition would increase to 60% by 2023.

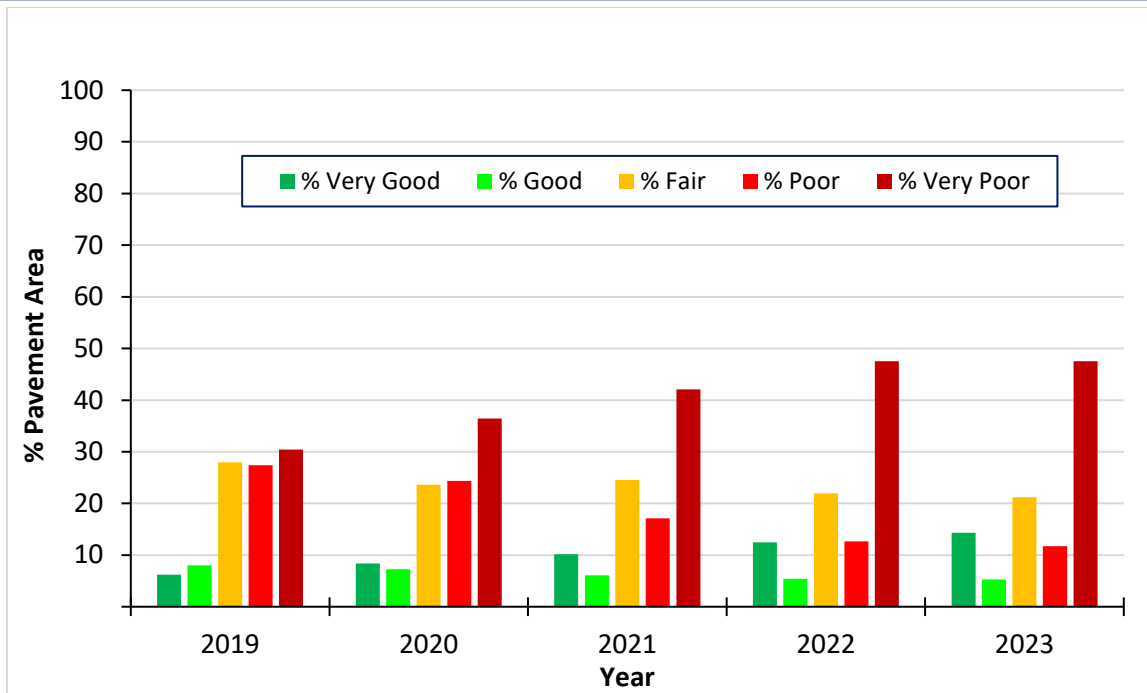


Figure 15. Village's Pavement Condition by Year with Current Funding Level (\$450k/Year).

4.2 Consequence of Local Distress Maintenance

Consequence of Localized Distress Maintenance plan calculates the cost and resulting condition of immediate implementation of local M&R, for the year of the most recent inspection. Based on the 2018 pavement condition survey, this plan estimated that PCI of 92 sections would increase by 2.2 points with an investment of about \$30,105. Put another way, the local M&R plan adds approximately an additional one year of life (based on the performance models) to about 22% of the network area. The local distress maintenance policy includes crack seals and patching. The details of localized distress maintenance plan based on the 2018 condition survey can be found in Appendix A. Table 8 shows the cost and pavement condition data of the consequence of local distress maintenance plan.

Table 8. Details of Consequence of Local Distress Maintenance Plan.

Number Sections	Policy Cost	Avg of Start PCI	Avg of End PCI
92	\$30,105	61.9	64.1

5. SUMMARY AND RECOMMENDATION

5.1 Summary

Pavement management can be defined as the systematic process of maintaining the pavements cost-effectively. The investment in pavement management system is rational considering a pavement

management not only provides a consistent and rational management method to make decisions but also helps in optimal use of funds and reduces pavement rehabilitation, which results in extended pavement life and increased credibility with stakeholders.

In this effort to implement a pavement management system for the Village of Bellwood, pavement data was collected with a state-of-the-art digital survey vehicle equipped with laser crack measurement system. Pavement images were used in automated condition survey process to assess the type, severity, and extent of the distresses. The pavement inspection data was imported to the PAVER™ software to determine the pavement condition index (PCI) and analyze the pavement network. This PAVER database provides a comprehensive inventory of pavement sections with all attributes that are required for pavement management.

Based on the October 2018 survey, the average pavement condition index (PCI) value for the Village is about 38.5, which indicates the pavement network is in overall 'poor' condition. Based on the Village's recommendation several five-year M&R funding analyses were performed using PAVER™ including: (a) do nothing (\$0/year), (b) keep funding level current (\$450K/year), (c) add moderate funding relative to current levels (\$600K/year), (d) maintain current condition (PCI = 38.5), (e) funds to meet potential performance targets (PCI = 50), and (f) eliminate backlogs.

It was found that the Village's existing funding level is not adequate to maintain the current pavement condition level for the next five years. It is needed to mention that currently about 55% of the pavement areas are currently in 'poor' and 'very poor' condition.

5.2 Recommendations

5.2.1 Increase funding level

Currently about 43% of the collector and 59% of the residential streets are in 'poor' and 'very poor' condition. This backlog will increase with the current level of funding. It was determined that \$800K/year funding is needed to maintain current condition. It is recommended that the Village should focus on applying routine preventive maintenance to the pavement sections in 'good' and 'very good' condition. Preventive maintenance activities, such as crack sealing and localized patching, can cost-effectively extend the life of a pavement.

5.2.2 Routine updated of PAVER™ pavement management system

ARA recommends to update the PAVER pavement management system annually to record the major M&R, stopgap and localized preventive maintenance activities, and pavement inventory changes (i.e., section split, new roads, jurisdictional changes, etc.). Based on the yearly updates of M&R activities, the Village can perform M&R analysis with updated funding level (if available), accounting for previous year(s) actual projects.

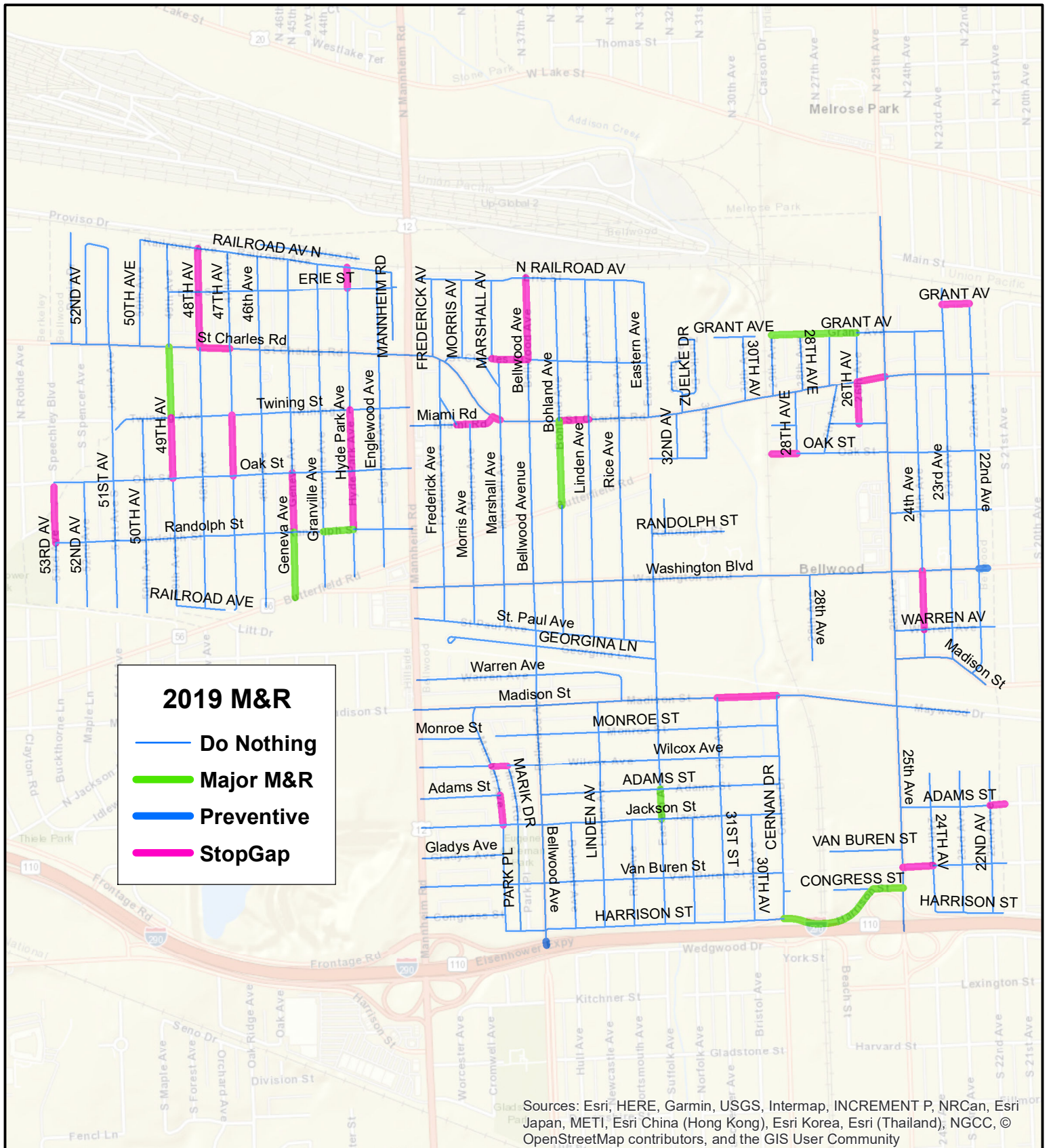
5.2.3 Routine pavement condition survey

For the Village of Bellwood, it is an excellent initiative to establish a pavement management system with the cooperation of Chicago Metropolitan Agency for Planning (CMAP). To realize the greatest benefit from this holistic effort, it is recommended that the Village of Bellwood continue to perform pavement condition surveys on a three to four-year cycle. The benefits of performing routine PCI surveys are many folded including:

- (a) A survey provides the current condition of the pavement network and helps determining the effectiveness of completed M&R activities performed in last few years,
- (b) Pavement performance models would be more accurate to predict future condition, and
- (c) Appropriate treatment and optimal funding allocation are possible to repair localized distresses based on the survey

Appendix — A

1. 2019 M&R Plan
2. 2019-2023 Major M&R Plan
3. 2019-2023 Stopgap and Localized Preventive Maintenance M&R Plan
4. Local Distress Maintenance Plan
5. List of sections selected for 2019-2023 Major M&R Plan
6. List of Pavement Sections



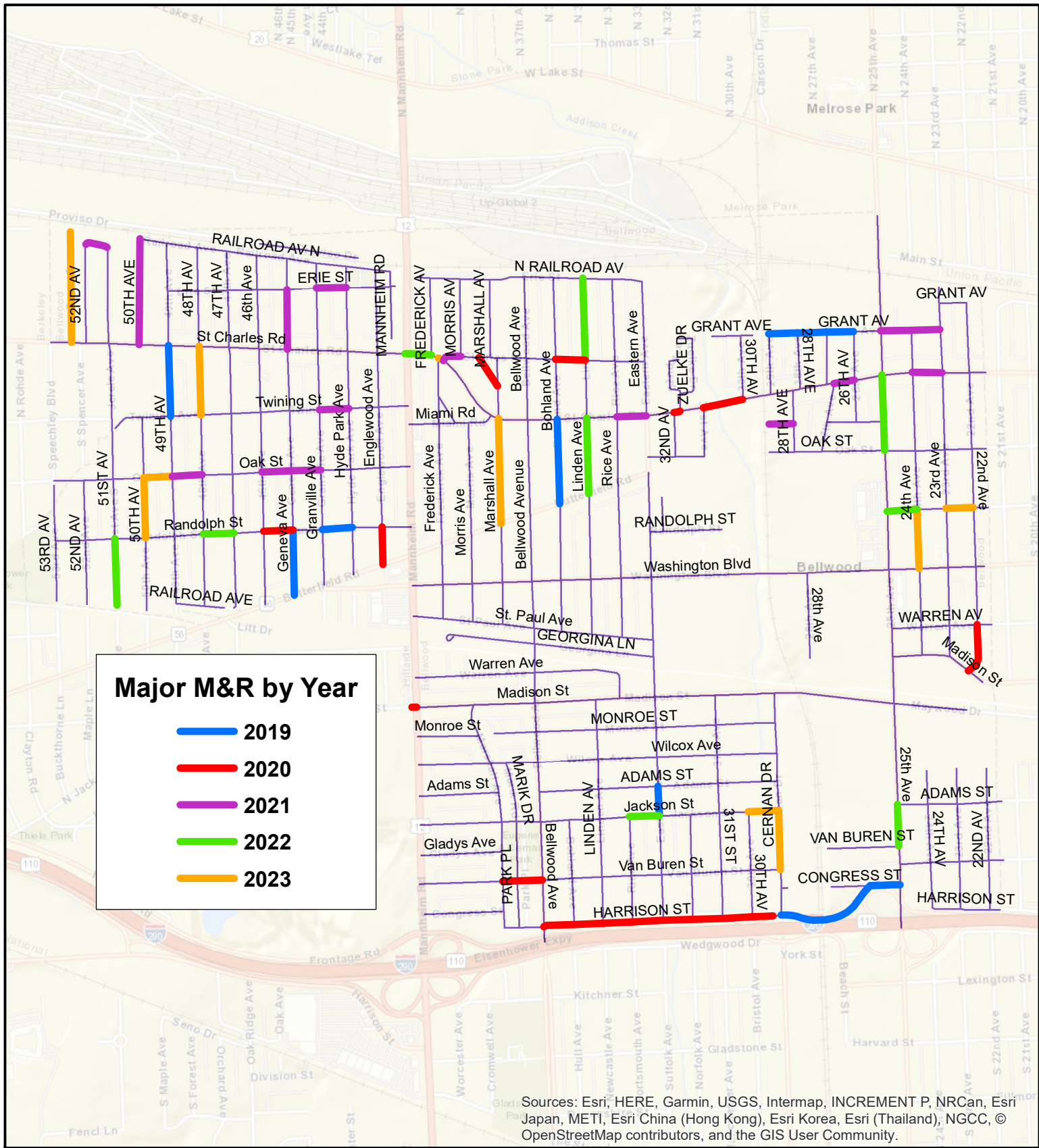
0 1,000 2,000 Feet



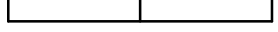
2019 M&R

Village of Bellwood, Illinois





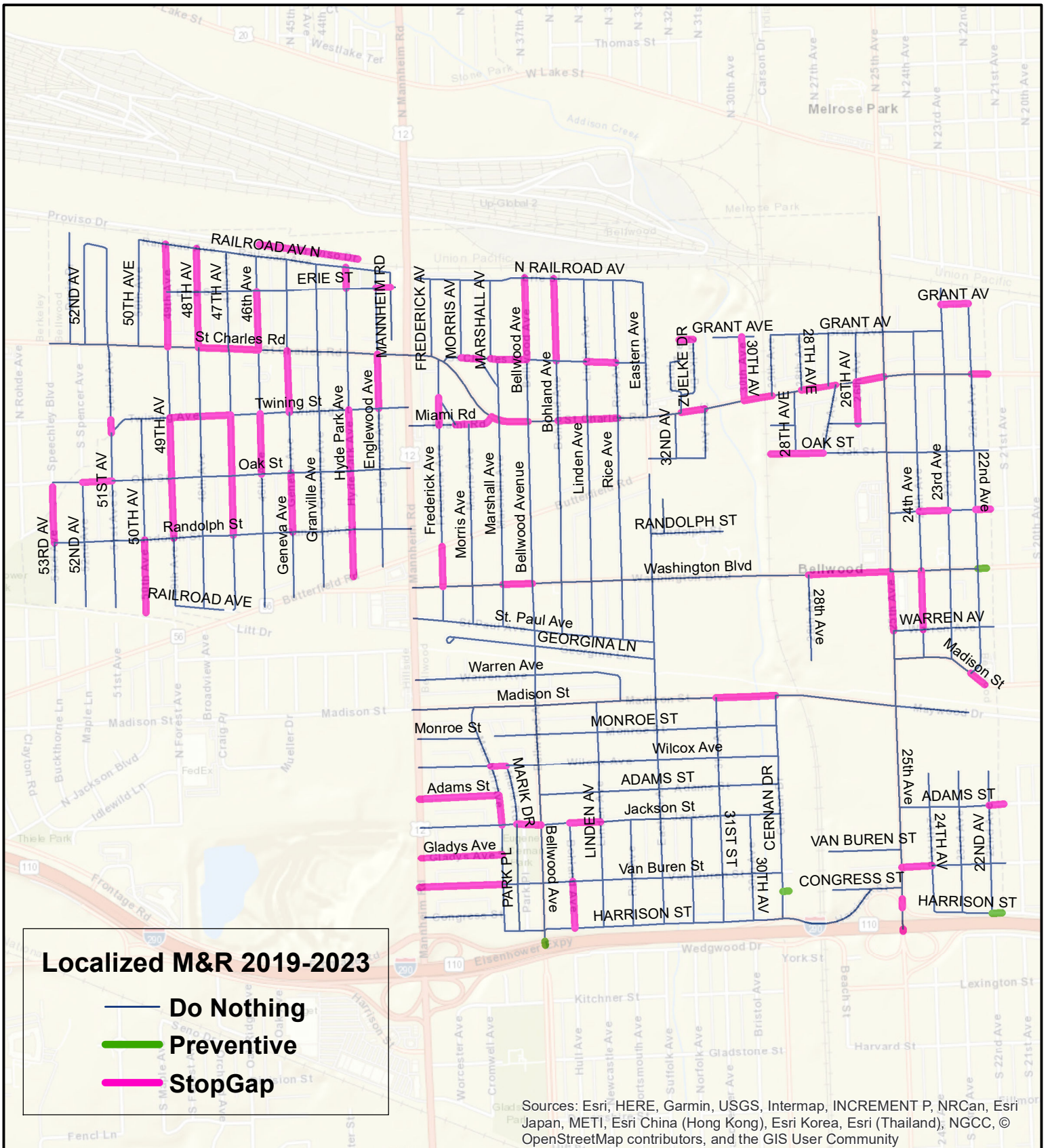
0 1,000 2,000 Feet



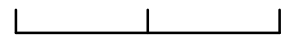
Major M&R by Year

Village of Bellwood, Illinois





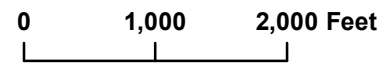
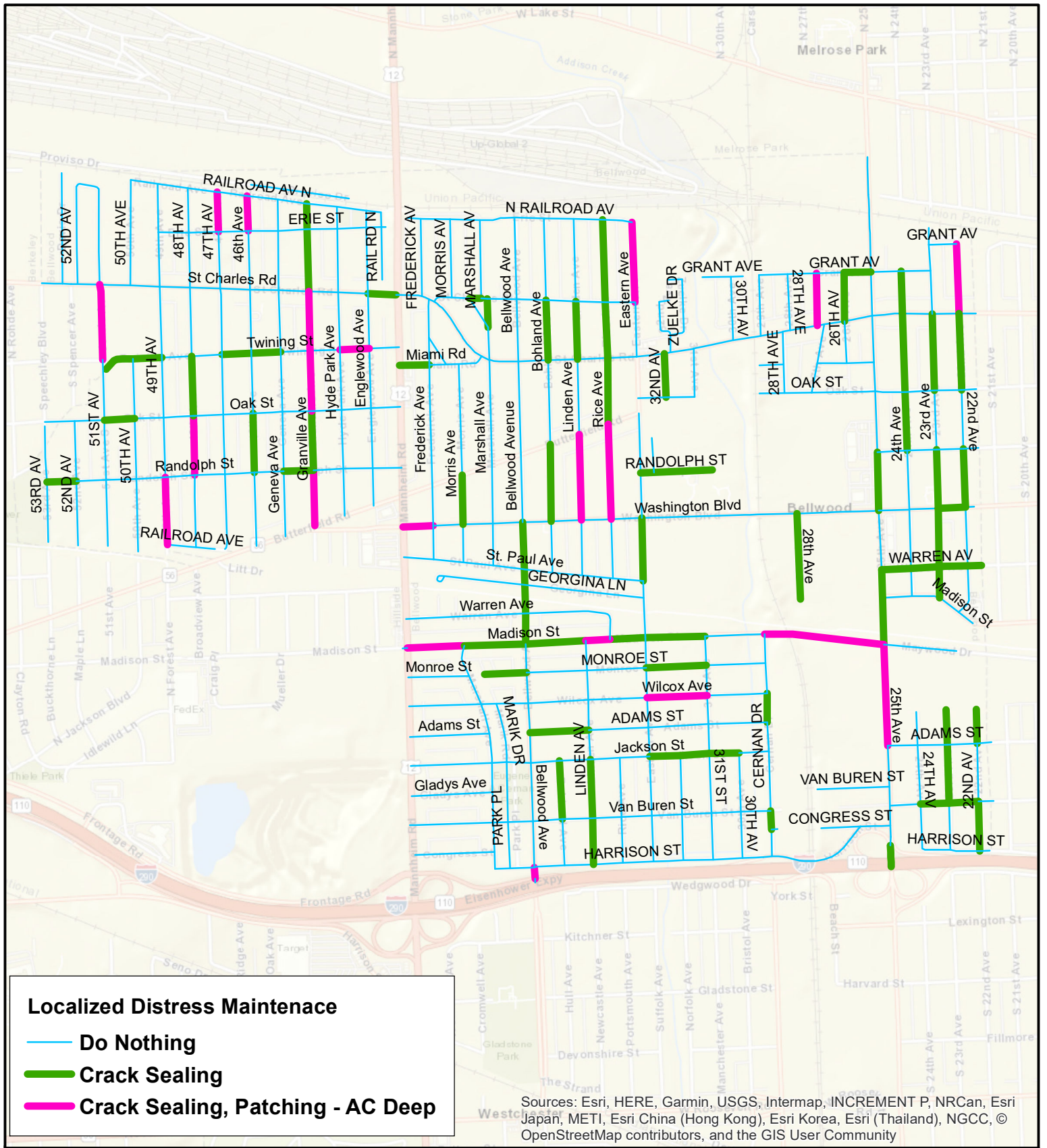
0 1,000 2,000 Feet



Localized M&R 2019-2023

Village of Bellwood, Illinois





Localized Distress Maintenance 2019

Village of Bellwood, Illinois



List of Pavement Sections Selected ofr Major M&R by Year

Year	Branch ID	Section ID	From	To	Length (ft)	Width (ft)	Rank	Pave_Type
2019	49TH_AV	66817	Twining Ave	St Charles Rd	795	28	Residential	AC
2019	Bohland_ve	42200	St Charles Rd	Butterfield Rd	947	25	Residential	AC
2019	Eastern_ve	23536	Jackson St	Adams St	329	35	Collector	AC
2019	Geneva_ve	64358	Butterfield Rd	Randolph St	733	27	Residential	AC
2019	GRANT_AV	90286	28th Ave	29th Ave	318	27	Residential	AC
2019	GRANT_AV	90288	26th Ave	27th Ave	309	27	Residential	AC
2019	GRANT_AV	90291	27th Ave	28th Ave	325	27	Residential	AC
2019	HARRISO_ST	124406	Congress St	Cernan Dr	1159	24	Residential	AC
2019	HARRISO_ST	124410	25th Ave	Congress St	333	24	Residential	AC
2019	Randolp_St	83924	Hyde Park Ave	Granville Ave	336	30	Residential	AC
2020	22nd_Ave	52270	Madison St	Warren Ave	566	16	Residential	AC
2020	Englewo_ve	27318	Randolph St	Butterfield Rd	423	26	Residential	AC
2020	HARRISO_ST	124405	32nd Ave	Eastern Ave	333	24	Residential	AC
2020	HARRISO_ST	124407	Eisenhower Expy Ramp	30th Ave	233	24	Residential	AC
2020	HARRISO_ST	124408	31st Ave	32nd Ave	335	24	Residential	AC
2020	HARRISO_ST	124409	30th Ave	31st Ave	332	24	Residential	AC
2020	HARRISO_ST	22603	Bellwood Ave	Bohlan Ave	341	25	Collector	AC
2020	HARRISO_ST	22604	Linden Ave	Rice Ave	332	23	Collector	AC
2020	HARRISO_ST	22605	Bohland Ave	Linden Ave	325	24	Collector	AC
2020	HARRISO_ST	22606	Rice Ave	Eastern Ave	345	23	Collector	AC
2020	Madison_St	27851	Mannheim Rd	Englewood Ave	52	39	Residential	AC
2020	MARSHAL_CT	59783	MARSHALL ave	St Charles Pl	385	25	Residential	AC
2020	Randolp_St	83925	Geneva Ave	46th	329	30	Residential	AC
2020	ST_CHAR_PL	89580	Linden Ave	Bohland Ave	333	27	Residential	AC
2020	St_Char_Rd	1282	32nd Ave	32nd Ave	68	46	Arterial	AC
2020	St_Char_Rd	1285	31st Ave	30th Ave	450	48	Arterial	AC
2020	Van_Bur_St	107531	Bellwood Ave	Marshall Ave	445	27	Residential	AC
2021	50TH_AVE	30079	Railroad Ave	St Charles Rd	1188	26	Residential	AC
2021	CASTLE_DR	91426	51st Ave S	52nd Ave	254	26	Residential	AC
2021	ERIE_ST	90515	Hyde Park Ave	Granville Ave	336	29	Residential	AC
2021	Geneva_ve	64355	St Charles Rd	Erie St	669	27	Residential	AC

Year	Branch ID	Section ID	From	To	Length (ft)	Width (ft)	Rank	Pave_Type
2021	GRANT_AV	90287	24th Ave	25th Ave	339	27	Residential	AC
2021	GRANT_AV	90290	23rd Ave	24th Ave	329	27	Residential	AC
2021	KORREL_AV	86592	28th Ave	Dead End	272	27	Residential	AC
2021	Oak_St	85421	Granville Ave	Geneva Ave	331	30	Residential	AC
2021	Oak_St	85424	48th Ave	49th Ave	336	30	Residential	AC
2021	Oak_St	85430	Geneva Ave	46th Ave	330	30	Residential	AC
2021	ST_CHAR_PL	89576	St Charles Rd	Morris Ave	220	27	Residential	AC
2021	St_Char_Rd	1271	Rice Ave	Eastern Ave	327	45	Arterial	AC
2021	St_Char_Rd	1276	27th Ave	26th Ave	233	44	Arterial	AC
2021	St_Char_Rd	8513	24th Ave	23rd Ave	335	42	Collector	AC
2021	Twining_St	27549	Geneva Ave	Hyde Park Ave	333	31	Residential	AC
2022	25th_Ave	2526	Glos Ave	St Charles Rd	526	53	Arterial	AC
2022	25th_Ave	2531	Van Buren St	Adams St	465	48	Arterial	AC
2022	25th_Ave	2539	Oak St	Glos Ave	325	47	Arterial	AC
2022	51ST_AV	67770	Randolph St	Dead End	746	27	Residential	AC
2022	Jackson_St	106392	Eastern Ave	Rice Ave	337	26	Residential	AC
2022	Linden__ve	43472	Erie St	St Charles Pl	926	26	Residential	AC
2022	Linden__ve	43474	St Charles Rd	Butterfield Rd	849	26	Residential	AC
2022	Randolp_St	83930	47th Ave	48th Ave	341	30	Residential	AC
2022	RANDOLP_ST	84373	24th Ave	25th Ave	336	24	Residential	AC
2022	St_Char_Rd	1264	Mannheim Rd	Frederick Ave	293	68	Arterial	AC
2023	24th_Ave	51617	Randolph St	Washington Blvd	665	26	Residential	AC
2023	48TH_AV	66240	Twining St	St Charles Rd	770	26	Residential	AC
2023	50TH_AV	67444	Randolph St	Oak St	677	27	Residential	AC
2023	CERNAN_DR	28933	Jackson St	Van Buren St	670	34	Residential	AC
2023	DAVIS_DR	68753	St Charles Rd	Dead End	1246	34	Residential	AC
2023	Jackson_St	106390	Cernan Dr	30th Ave	338	26	Residential	AC
2023	Marshal_ve	59471	Butterfield Rd	St Charles Rd	1180	25	Residential	AC
2023	Oak_St	85422	49th Ave	50th Ave	324	30	Residential	AC
2023	RANDOLP_ST	84374	22nd Ave	23rd Ave	305	24	Residential	AC
2023	St_Char_Rd	1284	Frederick Ave	St Charles Pl	69	52	Arterial	AC

List of Pavement Segments

BranchID	SectionID	From	To	Length (ft)	Width (ft)	Fun_Class	AADT	Pave_Type	PCI
22ND_AV	52375	Adams St	Dead End	382	24	Residential	N/A	AC	72
22ND_AV	52377	Harrison St	Van Buren St	555	24	Residential	N/A	AC	52
22ND_AV	52376	Van Buren St	Adams St	653	24	Residential	N/A	AC	48
22nd_Ave	52272	Randolph St	Oak St	662	16	Residential	N/A	AC	46
22nd_Ave	52274	Oak St	St Charles	860	16	Residential	N/A	AC	70
22nd_Ave	52271	Warren Ave	Washington Blvd	660	16	Residential	N/A	AC	22
22nd_Ave	52273	Washington Blvd	Randolph St	658	16	Residential	N/A	AC	67
22nd_Ave	52270	Madison St	Warren Ave	566	16	Residential	N/A	AC	36
22nd_Ave	52269	St Charles Rd	Unnamed Rd	780	16	Residential	N/A	AC	52
23RD_AV	52167	Harrison	Van Buren St	524	24	Residential	N/A	AC	48
23RD_AV	52166	Van Buren St	Adams St	655	24	Residential	N/A	AC	55
23RD_AV	52165	Adams St	Dead End	397	24	Residential	N/A	AC	60
23rd_Ave	52020	Railroad Ave	Dead End	190	27	Residential	N/A	AC	15
23rd_Ave	52027	St Charles Rd	Grant Ave	485	27	Residential	N/A	AC	16
23rd_Ave	52022	Warren Ave	Washington Blvd	654	27	Residential	N/A	AC	52
23rd_Ave	52023	Randolph St	Oak St.	661	27	Residential	N/A	AC	65
23rd_Ave	52026	Grant Ave	Unnamed Rd	292	27	Residential	N/A	AC	8
23rd_Ave	52024	Washington Blvd	Randolph St	662	27	Residential	N/A	AC	61
23rd_Ave	52025	Oak St	St Charles Rd	864	27	Residential	N/A	AC	69
23rd_Ave	52021	Madison St	Warren St	350	27	Residential	N/A	AC	64
24TH_AV	51778	Harrison St	Van Buren St	502	26	Residential	N/A	AC	100
24TH_AV	51776	Adams St	Dead End	375	26	Residential	N/A	AC	19
24TH_AV	51777	Van Buren St	Adams St	663	26	Residential	N/A	AC	15
24th_Ave	51614	Madison St	Warren Ave	311	26	Residential	N/A	AC	17
24th_Ave	51615	Washington Blvd	Warren Ave	662	26	Residential	N/A	AC	30
24th_Ave	51618	St Charles Rd	Oak St	886	26	Residential	N/A	AC	51
24th_Ave	51613	Grant Ave	St Charles	473	26	Residential	N/A	AC	86
24th_Ave	51616	Oak St.	Randolph St	655	26	Residential	N/A	AC	54
24th_Ave	51617	Randolph St	Washington Blvd	665	26	Residential	N/A	AC	44
25th_Ave	2528	Warren Ave	Washington Blvd	663	62	Arterial	18,300	AC	43
25th_Ave	2538	Washington Blvd	Randolph St	656	60	Arterial	18,300	AC	65
25th_Ave	2533	Van Buren St	Van Buren St	211	48	Arterial	18,600	AC	21
25th_Ave	2540	Main St	City Limit	425	63	Arterial	18,300	PCC	95
25th_Ave	2542	Grant Ave	Main St	866	53	Arterial	18,300	PCC	96
25th_Ave	2531	Van Buren St	Adams St	465	48	Arterial	18,600	AC	24
25th_Ave	2535	Eisenhower Expy Ramp	Eisenhower Expy Ramp	97	52	Arterial	18,600	AC	35
25th_Ave	2527	Adams St	S Maywood Dr	1,136	48	Arterial	18,600	AC	17
25th_Ave	2534	Eisenhower Expy	Eisenhower Expy Ramp	238	65	Arterial	18,600	AC	53
25th_Ave	2536	Harrison St.	Van Buren St	226	53	Arterial	18,600	AC	24
25th_Ave	2530	Harrison St	Eisenhower Expy Ramp	124	60	Arterial	18,600	AC	14
25th_Ave	2529	Maywood Dr	Madison St	525	63	Arterial	18,600	AC	59
25th_Ave	2526	Glos Ave	St Charles Rd	526	53	Arterial	18,300	AC	42
25th_Ave	2539	Oak St	Glos Ave	325	47	Arterial	18,300	AC	42
25th_Ave	2537	Randolph St	Oak St	684	53	Arterial	18,300	AC	50
25th_Ave	2532	Madison St	Warren Ave	318	62	Arterial	18,300	AC	80
25th_Ave	2522	Eisenhower Expy	Eisenhower Expy	22	61	Arterial	18,600	AC	29
25th_Ave	2541	St Charles Rd	Grant Ave	494	51	Arterial	18,300	PCC	93

BranchID	SectionID	From	To	Length (ft)	Width (ft)	Fun_Class	AADT	Pave_Type	PCI
26TH_AV	51217	Grant Ave	St Charles Rd	546	26	Residential	N/A	AC	56
26TH_AV	51218	Glos Ave	St Charles Rd	475	26	Residential	N/A	AC	31
27TH_AV	50983	Glos Ave	Oak St	336	27	Residential	N/A	AC	19
27TH_AV	50982	St Charles Rd	Glos Ave	443	27	Residential	N/A	AC	19
27TH_AV	50843	Grant Ave	St Charles Rd	589	27	Residential	N/A	AC	60
28TH_AVE	28650	St Charles Rd	Korrel Ave	368	26	Residential	N/A	AC	9
28TH_AVE	28498	St Charles Rd	Grant Ave	633	27	Residential	N/A	AC	23
28th_Ave	28805	Washington Blvd	Dead End	959	31	Residential	N/A	AC	79
28TH_AVE	28651	Korrel Ave	Oak St	319	25	Residential	N/A	AC	11
29TH_AV	50013	Grant Ave	St Charles Rd	685	19	Residential	N/A	AC	4
30TH_AV	48886	Grant Ave	St Charles Rd	716	26	Residential	N/A	AC	35
30TH_AV	49133	Van Buren St	Harrison St	520	26	Residential	N/A	AC	18
30TH_AV	49132	Jackson St	Van Buren St	662	26	Residential	N/A	AC	8
31ST_ST	48500	Adams St	Jackson St	331	26	Residential	N/A	AC	28
31ST_ST	48188	St Charles Rd	Oak St	543	26	Residential	N/A	AC	17
31ST_ST	48503	Monroe St	Wilcox Ave	338	26	Residential	N/A	AC	13
31ST_ST	48499	Jackson St	Van Buren St	667	26	Residential	N/A	AC	10
31ST_ST	48501	Wilcox Ave	Adams St	322	26	Residential	N/A	AC	10
31ST_ST	48498	Madison St	Monroe St	330	26	Residential	N/A	AC	21
31ST_ST	48502	Van Buren St	Harrison St	524	26	Residential	N/A	AC	11
32ND_AV	46787	St Charles Rd	Oak St	493	27	Residential	N/A	AC	71
32ND_AV	46858	Jackson St	Van Buren St	664	27	Residential	N/A	AC	14
32ND_AV	46519	St Charles Rd	Zuelke	195	27	Residential	N/A	AC	19
32ND_AV	46518	Zuelke Dr	32 Ave	571	27	Residential	N/A	AC	28
32ND_AV	46859	Van Buren St	Harrison St	515	27	Residential	N/A	AC	11
46th_Ave	64977	Twining St	St Charles Rd	718	20	Residential	N/A	AC	23
46th_Ave	64978	St Charles Rd	Erie St	657	20	Residential	N/A	AC	35
46th_Ave	64976	Randolph St	Oak St	667	20	Residential	N/A	AC	54
46th_Ave	64975	Erie St	Railroad Ave	393	20	Residential	N/A	AC	63
46th_Ave	64979	Butterfield Rd	Randolph St	826	20	Residential	N/A	AC	22
46th_Ave	64980	Oak St	Twining St	672	20	Residential	N/A	AC	40
47TH_AV	65621	St Charles Rd	Erie St	636	27	Residential	N/A	AC	25
47TH_AV	65624	Railroad Ave	Randolph St	848	27	Residential	N/A	AC	48
47TH_AV	65622	Twining St	St Charles Rd	746	27	Residential	N/A	AC	21
47TH_AV	65620	Erie St	Railroad Ave	449	27	Residential	N/A	AC	64
47TH_AV	65625	Oak St	Twining St	675	27	Residential	N/A	AC	31
47TH_AV	65623	Randolph St	Oak St	669	27	Residential	N/A	AC	43
48TH_AV	66242	Railroad Ave	Randolph St	813	26	Residential	N/A	AC	19
48TH_AV	66240	Twining St	St Charles Rd	770	26	Residential	N/A	AC	44
48TH_AV	66243	Oak St	Twining St	670	26	Residential	N/A	AC	61
48TH_AV	66241	Randolph St	Oak St	666	26	Residential	N/A	AC	66
48TH_AV	66239	St Charles Rd	Erie St	617	26	Residential	N/A	AC	29
48TH_AV	66238	Erie St	Railroad Ave	499	26	Residential	N/A	AC	31
49TH_AV	66820	Oak St	Railroad Ave	676	28	Residential	N/A	AC	29
49TH_AV	66818	Randolph St	Oak St	669	28	Residential	N/A	AC	41
49TH_AV	66821	St Charles Rd	Erie St	612	28	Residential	N/A	AC	35
49TH_AV	66819	Railroad Ave	Randolph St	759	28	Residential	N/A	AC	54
49TH_AV	66816	Erie St	Railroad Ave	543	28	Residential	N/A	AC	35
49TH_AV	66817	Twining Ave	St Charles Rd	795	28	Residential	N/A	AC	32

BranchID	SectionID	From	To	Length (ft)	Width (ft)	Fun_Class	AADT	Pave_Type	PCI
50TH_AV	67445	Randolph St	Dead End	817	27	Residential	N/A	AC	41
50TH_AV	67444	Randolph St	Oak St	677	27	Residential	N/A	AC	44
50TH_AV	67443	Oak St	Twining Ave	673	27	Residential	N/A	AC	46
50TH_AVE	30079	Railroad Ave	St Charles Rd	1,188	26	Residential	N/A	AC	39
51ST_AV	67773	Twining Ave	Bohlander Ave	145	27	Residential	N/A	AC	40
51ST_AV	67774	Oak St	Twining Ave	533	27	Residential	N/A	AC	16
51ST_AV	67769	St Charles Rd	Castle Dr	1,081	27	Residential	N/A	AC	21
51ST_AV	67772	Bohlander Ave	St Charles Rd	848	27	Residential	N/A	AC	58
51ST_AV	67770	Randolph St	Dead End	746	27	Residential	N/A	AC	42
51ST_AV	67771	Randolph St	Oak St	670	27	Residential	N/A	AC	14
52ND_AV	68457	Randolph St	Dead End	726	27	Residential	N/A	AC	18
52ND_AV	68309	St Charles Rd	Castle Rd	1,114	27	Residential	N/A	AC	24
52ND_AV	68456	Randolph St	Oak St	671	27	Residential	N/A	AC	14
53RD_AV	68879	Randolph St	Oak St	627	42	Residential	N/A	AC	30
53RD_AV	68880	Randolph St	Dead End	673	42	Residential	N/A	AC	46
ADAMS_ST	105966	Cernan Dr	31st Ave	664	27	Residential	N/A	AC	18
ADAMS_ST	105964	Linden Ave	Bellwood Ave	663	27	Residential	N/A	AC	65
ADAMS_ST	106026	22nd ST	23rd Ave	336	27	Residential	N/A	AC	17
ADAMS_ST	106025	24th Ave	25th Ave	338	27	Residential	N/A	AC	11
ADAMS_ST	106028	23rd Ave	24th Ave	331	27	Residential	N/A	AC	12
ADAMS_ST	105965	Eastern Ave	Linden Ave	670	27	Residential	N/A	AC	7
ADAMS_ST	106027	22nd Ave	City Limit	163	27	Residential	N/A	AC	32
Adams_St	105554	Marshall Ave	Mannheim Rd	893	27	Residential	N/A	AC	43
ADAMS_ST	105967	31st Ave	Eastern Ave	674	27	Residential	N/A	AC	19
Bellwoo_ve	10992	Madison St	Warren Ave	341	36	Collector	1,900	AC	72
Bellwoo_ve	11002	Harrison St.	Van Buren St	521	44	Collector	2,650	AC	48
Bellwoo_ve	11001	Eisenhower Expy Ramp	Eisenhower Expy	44	31	Collector	2,650	AC	100
Bellwoo_ve	10993	Georgina Ln	St. Paul Ave	175	36	Collector	1,900	AC	73
Bellwoo_ve	10997	Madison St	Monroe St	323	12	Collector	2,650	AC	18
Bellwoo_ve	10994	Warren Ave	Georgina Ln	322	36	Collector	1,900	AC	68
Bellwoo_ve	10991	Butterfield Rd	St Charles Rd	1,047	34	Collector	1,900	AC	28
Bellwoo_ve	10999	Adams St	Wilcox Ace	333	40	Collector	2,650	AC	13
Bellwoo_ve	10996	Washington Blvd	Butterfield Rd	762	36	Collector	1,900	AC	49
Bellwoo_ve	27798	St Charles Pl	Erie St	917	27	Residential	1,900	AC	31
Bellwoo_ve	11003	Wilcox Ave	Monroe St	344	40	Collector	2,650	AC	13
Bellwoo_ve	27799	St Charles Rd	St Charles Pl	699	25	Residential	1,900	AC	23
Bellwoo_ve	11000	Harrison St	Eisenhower Expy Ramp	124	31	Collector	2,650	AC	54
Bellwoo_ve	11004	Jackson St	Adams St	338	40	Collector	2,650	AC	11
Bellwoo_ve	10998	Van Buren St	Jackson St	656	40	Collector	2,650	AC	21
Bellwoo_ve	10995	St. Paul Ave	Washington Blvd	527	35	Collector	1,900	AC	53
BOHLAND_AV	42563	Jackson St	Van Buren St	658	25	Residential	N/A	AC	52
BOHLAND_AV	42564	Van Buren St	Harrison St	520	25	Residential	N/A	AC	40
Bohland_ve	42198	Erie St	St Charles Pl	923	25	Residential	N/A	AC	43
Bohland_ve	42202	Butterfield Rd	Washington Blvd	863	25	Residential	N/A	AC	52
Bohland_ve	42199	Washington Blvd	St Paul Ave	577	25	Residential	N/A	AC	10
Bohland_ve	42201	St Charles Pl	St Charles Rd	674	25	Residential	N/A	AC	59
Bohland_ve	42200	St Charles Rd	Butterfield Rd	947	25	Residential	N/A	AC	32
CASTLE_DR	91426	51st Ave S	52nd Ave	254	26	Residential	N/A	AC	38
CERNAN_DR	28932	Adams St	Jackson St	328	32	Residential	N/A	AC	53

BranchID	SectionID	From	To	Length (ft)	Width (ft)	Fun_Class	AADT	Pave_Type	PCI
CERNAN_DR	28934	Harrison St	CERNAN DR	302	35	Residential	N/A	AC	45
CERNAN_DR	28936	Wilcox Ave	Monroe St	342	33	Residential	N/A	AC	51
CERNAN_DR	28930	Madison St	Monroe St	326	35	Residential	N/A	AC	48
CERNAN_DR	28933	Jackson St	Van Buren St	670	34	Residential	N/A	AC	44
CERNAN_DR	28935	Van Buren St	CERNAN DR	206	35	Residential	N/A	AC	63
CERNAN_DR	28931	Wilcox Ave	Adams mSt	322	35	Residential	N/A	AC	55
CONGRES_ST	30569	Harrison St	Dead End	443	24	Residential	N/A	AC	27
Congres_St	108022	Marshall Ave	Mannheim Rd	892	28	Residential	N/A	AC	18
CONGRES_ST	108204	Cernan Dr	Unknown Rd	67	28	Residential	N/A	AC	69
DAVIS_DR	68753	St Charles Rd	Dead End	1,246	34	Residential	N/A	AC	43
Eastern_ve	23541	Wilcox Ave	Monroe St	332	37	Collector	2,500	AC	17
Eastern_ve	23535	Adams St	Wilcox Ave	335	37	Collector	2,500	AC	19
Eastern_ve	23534	Randolph St	Butterfield Rd	670	29	Collector	2,500	AC	48
Eastern_ve	23538	Monroe St	Madison St	340	35	Collector	2,500	AC	11
Eastern_ve	23544	Washington Blvd	Randolph St	507	30	Collector	2,500	AC	47
Eastern_ve	23542	Georgina Ln	St Paul Ave	189	29	Collector	2,500	AC	64
Eastern_ve	23539	Harrison St	Van Buren	513	37	Collector	2,500	AC	7
Eastern_ve	23537	Van Buren St	Jackson St	666	35	Collector	2,500	AC	13
Eastern_ve	45803	St Charles Pl	St Charles Rd	612	27	Residential	1,400	AC	11
Eastern_ve	23540	St Paul Ave	Washington Blvd	707	31	Collector	2,500	AC	53
Eastern_ve	45802	Erie St	St Charles Pl	902	27	Residential	N/A	AC	70
Eastern_ve	23536	Jackson St	Adams St	329	35	Collector	2,500	AC	32
Eastern_ve	23543	Madison St	Georgina Ln	449	35	Collector	2,500	AC	50
Englewo_ve	27314	Railroad Ave	Erie St	193	17	Residential	N/A	AC	19
Englewo_ve	27318	Randolph St	Butterfield Rd	423	26	Residential	N/A	AC	36
Englewo_ve	27315	Erie St	St Charles Rd	743	27	Residential	N/A	AC	17
Englewo_ve	27319	Oak St	Twining St	674	28	Residential		AC	50
Englewo_ve	27317	Oak St	Randolph St	674	26	Residential	N/A	AC	49
Englewo_ve	27316	St Charles Rd	Twining St	613	28	Residential	N/A	AC	34
ERIE_ST	90512	47th Ave	48th Ave	334	29	Residential	N/A	AC	21
ERIE_ST	90515	Hyde Park Ave	Granville Ave	336	29	Residential	N/A	AC	38
ERIE_ST	90517	Englewood Ave	Hyde Park Ave	330	29	Residential	N/A	AC	24
ERIE_ST	90511	48th Ave	49th Ave	341	29	Residential	N/A	AC	21
ERIE_ST	90518	46th Ave	47th Ave	334	29	Residential	N/A	AC	17
ERIE_ST	90519	Geneva Ave	48th Ave	335	29	Residential	N/A	AC	23
ERIE_ST	90516	Mannheim Rd	Englewood Ave	166	29	Residential	N/A	AC	34
ERIE_ST	90514	Mannheim Rd	Dead End	52	29	Residential	N/A	AC	21
ERIE_ST	90513	Granville Ave	Geneva Ave	329	29	Residential	N/A	AC	47
FREDERI_AV	61158	St Charles Rd	Erie St.	868	30	Residential	N/A	AC	66
Frederi_ve	61509	Miami Rd	Park St	307	30	Residential	N/A	AC	34
Frederi_ve	61507	Butterfield Rd	Miami Rd	1,356	30	Residential	N/A	AC	22
Frederi_ve	61508	Washington Blvd	Butterfield Rd	452	30	Residential	N/A	AC	34
Frederi_ve	61506	St. Paul Ave	Washington Blvd	380	30	Residential	N/A	AC	7
Frederi_ve	61505	Park Ct	St Charles	433	30	Residential	N/A	AC	18
Geneva__ve	64357	Randolph St	Oak St	668	27	Residential	N/A	AC	29
Geneva__ve	64359	Oak St	Twining St	671	27	Residential	N/A	AC	22
Geneva__ve	64355	St Charles Rd	Erie St	669	27	Residential	N/A	AC	38
Geneva__ve	64358	Butterfield Rd	Randolph St	733	27	Residential	N/A	AC	32
Geneva__ve	64354	Erie St	Railroad Ave	355	27	Residential	N/A	AC	33

BranchID	SectionID	From	To	Length (ft)	Width (ft)	Fun_Class	AADT	Pave_Type	PCI
Geneva__ve	64356	Twining St	St Charles Rd	694	27	Residential	N/A	AC	35
GEORGIN_LN	29080	Bellwood Ave	Eastern Ave	1,342	21	Residential	N/A	AC	7
GEORGIN_LN	29079	Bellwood Ave	Cul-de-Sac	1,129	20	Residential	N/A	AC	10
Gladys__ve	106938	Marshall Ave	Mannheim Rd	911	26	Residential	N/A	AC	33
GLOS_AV	87460	26th Ave	27th Ave	330	28	Residential	N/A	AC	8
GLOS_AV	87459	25th Ave	26th Ave	307	28	Residential	N/A	AC	13
Grandvi_ve	63579	Twining St	St Charles Rd	667	26	Residential	N/A	AC	66
Grandvi_ve	63578	St Charles Rd	Erie St	702	26	Residential	N/A	AC	75
Grandvi_ve	63577	Erie St	Railroad Ave	284	26	Residential	N/A	AC	72
Grandvi_ve	63580	Randolph St	Oak St	668	26	Residential	N/A	AC	60
Grandvi_ve	63582	Oak St	Twining St	678	26	Residential	N/A	AC	59
Grandvi_ve	63581	Butterfield Rd	Randolph St	622	26	Residential	N/A	AC	56
GRANT_AV	90308	22nd Ave	23rd Ave	310	27	Residential	N/A	AC	30
GRANT_AV	90288	26th Ave	27th Ave	309	27	Residential	N/A	AC	4
GRANT_AV	90289	25th Ave	26th Ave	305	27	Residential	N/A	AC	88
GRANT_AV	90286	28th Ave	29th Ave	318	27	Residential	N/A	AC	18
GRANT_AV	90290	23rd Ave	24th Ave	329	27	Residential	N/A	AC	9
GRANT_AV	90287	24th Ave	25th Ave	339	27	Residential	N/A	AC	39
GRANT_AV	90044	Zuelke Dr	32nd Ave	156	27	Residential	N/A	AC	35
GRANT_AV	90291	27th Ave	28th Ave	325	27	Residential	N/A	AC	15
GRANT_AVE	28333	30th Ave	Dead End	320	21	Residential	N/A	AC	26
GRANT_AVE	28334	30th Ave	GRANT AVE	136	21	Residential	N/A	AC	6
HARRISO_ST	124409	30th Ave	31st Ave	332	24	Residential	2,150	AC	10
HARRISO_ST	22604	Linden Ave	Rice Ave	332	23	Collector	2,150	AC	22
HARRISO_ST	124414	22nd Ave	City Limit	114	24	Residential	N/A	PCC	82
HARRISO_ST	124410	25th Ave	Congress St	333	24	Residential	2,150	AC	21
HARRISO_ST	22606	Rice Ave	Eastern Ave	345	23	Collector	2,150	AC	14
HARRISO_ST	124407	Eisenhower Expy Ramp	30th Ave	233	24	Residential	2,150	AC	18
HARRISO_ST	124412	23rd Ave	24th Ave	319	24	Residential	N/A	PCC	51
HARRISO_ST	124406	Congress St	Cernan Dr	1,159	24	Residential	2,150	AC	22
HARRISO_ST	22605	Bohland Ave	Linden Ave	325	24	Collector	2,150	AC	15
HARRISO_ST	124408	31st Ave	32nd Ave	335	24	Residential	2,150	AC	22
HARRISO_ST	124404	Bellwood Ave	Marshall Ave	444	24	Residential	N/A	AC	17
HARRISO_ST	22603	Bellwood Ave	Bohlan Ave	341	25	Collector	2,150	AC	14
HARRISO_ST	124413	22nd Ave	23rd Ave	330	24	Residential	N/A	PCC	57
HARRISO_ST	124411	Cernan Dr	Eisenhower Expy Ramp	96	24	Residential	2,150	AC	21
HARRISO_ST	124405	32nd Ave	Eastern Ave	333	24	Residential	2,150	AC	14
Hyde_Pa_ve	62793	Twining St	St Charles Rd	644	28	Residential	N/A	AC	25
Hyde_Pa_ve	62795	Butterfield Rd	Randolph St	529	28	Residential	N/A	AC	43
Hyde_Pa_ve	62792	St Charles Rd	Erie St	714	28	Residential	N/A	AC	20
Hyde_Pa_ve	62791	Erie St	Railroad Ave	245	28	Residential	N/A	AC	31
Hyde_Pa_ve	62794	Randolph St	Oak St	660	28	Residential	N/A	AC	31
Hyde_Pa_ve	62796	Oak St	Twining Rd	678	28	Residential	N/A	AC	30
Jackson_St	106387	30th Ave	31st Ave	333	26	Residential	N/A	AC	53
Jackson_St	106390	Cernan Dr	30th Ave	338	26	Residential	N/A	AC	44
Jackson_St	106388	Bohland Ave	Bellwood Ave	324	26	Residential	N/A	AC	24
Jackson_St	106386	Marik Rd	Marshall Ave	168	26	Residential	N/A	AC	19
Jackson_St	106392	Eastern Ave	Rice Ave	337	26	Residential	N/A	AC	42
Jackson_St	106384	Marshall Ave	Mannheim Rd	914	26	Residential	N/A	AC	17

BranchID	SectionID	From	To	Length (ft)	Width (ft)	Fun_Class	AADT	Pave_Type	PCI
Jackson_St	106389	32nd Ave	Eastern Ave	343	26	Residential	N/A	AC	61
Jackson_St	106385	Rice Ave	Linden Ave	333	26	Residential	N/A	AC	25
Jackson_St	106393	Linden Ave	Bohland Ave	345	26	Residential	N/A	AC	35
Jackson_St	106394	Bellwood Ave	Marik Rd	269	26	Residential	N/A	AC	33
Jackson_St	106391	31st Ave	32nd Ave	327	26	Residential	N/A	AC	53
KORREL_AV	86592	28th Ave	Dead End	272	27	Residential	N/A	AC	39
Linden_ve	43473	Washington	St Paul Ave	617	26	Residential	N/A	AC	15
Linden_ve	43475	St Charles Pl	St Charles Rd	650	26	Residential	N/A	AC	51
Linden_ve	43474	St Charles Rd	Butterfield Rd	849	26	Residential	N/A	AC	42
Linden_ve	43472	Erie St	St Charles Pl	926	26	Residential	N/A	AC	41
Linden_ve	43476	Butterfield Rd	Washington Blvd	962	26	Residential	N/A	AC	56
LINDEN_AV	43852	Wilcox Ave	Monroe St	329	26	Residential	N/A	AC	14
LINDEN_AV	43850	Jackson St	Van Buren St	659	26	Residential	N/A	AC	52
LINDEN_AV	43847	Madison St	Monroe St	335	26	Residential	N/A	AC	20
LINDEN_AV	43848	Wilcox Ave	Adams St	342	26	Residential	N/A	AC	8
LINDEN_AV	43851	Van Buren St	Harrison St	518	26	Residential	N/A	AC	52
LINDEN_AV	43849	Adams St.	Jackson St	332	26	Residential	N/A	AC	13
Madison_St	27851	Mannheim Rd	Englewood Ave	52	39	Residential	4,550	AC	33
Madison_St	8768	Eastern Ave	31st Ave	673	45	Collector	4,550	AC	52
Madison_St	8770	31st Ave	Cernan Dr	667	44	Collector	4,550	AC	30
Madison_St	8772	Cernan Dr	25th Ave	1,350	44	Collector	4,550	AC	55
Madison_St	1467	22nd Ave	City Limit	202	41	Arterial	6,550	AC	34
Madison_St	1465	23rd Ave	22nd Ave	268	41	Arterial	6,550	AC	29
Madison_St	8774	Marshall Ave	Bellwood Ave	691	44	Collector	4,550	AC	78
Madison_St	8771	Warren Ave	Eastern Ave	396	44	Collector	4,550	AC	64
Madison_St	1466	24th Ave	23rd Ave	313	43	Arterial	6,550	AC	19
Madison_St	8769	Bellwood Ave	Linden Ave	679	44	Collector	4,550	AC	88
Madison_St	1464	25th Ave	24th Ave	329	40	Arterial	6,550	AC	23
Madison_St	8767	Mannheim Rd	Marshall Ave	639	45	Collector	4,550	AC	79
Madison_St	8773	Linden Ave	Warren Ave	272	44	Collector	4,550	AC	55
RAILROA__N	27076	Erie St	Railroad Ave	166	17	Residential	40,200	AC	13
RAILROA__N	27077	Erie St	Dead End	592	18	Residential	40,200	AC	17
MARIK_DR	57839	Jackson St	Wilcox Ave	667	20	Residential	N/A	AC	15
MARSHAL_AV	59613	Harrison St	Congress St	187	26	Residential	N/A	AC	11
MARSHAL_AV	59611	Wilcox Ave	Monroe St	343	26	Residential	N/A	AC	17
MARSHAL_AV	59226	St Charles Pl	Erie St	876	24	Residential	N/A	AC	49
MARSHAL_AV	59606	Monroe St	Madison St	361	26	Residential	N/A	AC	15
MARSHAL_AV	59609	Congress St	Van nBuren St	334	26	Residential	N/A	AC	22
MARSHAL_AV	59612	Van Buren St	Gladys Ave	339	26	Residential	N/A	AC	28
MARSHAL_AV	59608	Gladys Ave	Jackson St	331	26	Residential	N/A	AC	21
MARSHAL_AV	59610	Jackson St	Adams St	329	26	Residential	N/A	AC	32
MARSHAL_AV	59607	Adams St	Wilcox Ave	342	26	Residential	N/A	AC	25
MARSHAL_CT	59783	MARSHALL ave	St Charles Pl	385	25	Residential	N/A	AC	35
Marshal_ve	59470	Marshall Ct	St Charles Pl	472	25	Residential	N/A	AC	19
Marshal_ve	59472	Washington Blvd	Butterfield Rd	660	25	Residential	N/A	AC	47
Marshal_ve	59469	Marshall Ave	St Charles Pl	319	25	Residential	N/A	AC	58
Marshal_ve	59473	St Charles Rd	Marshall Ct	364	25	Residential	N/A	AC	48
Marshal_ve	59471	Butterfield Rd	St Charles Rd	1,180	25	Residential	N/A	AC	43
Miami_Rd	27985	Frederick Ave	Mannheim Rd	335	25	Residential	N/A	AC	51

BranchID	SectionID	From	To	Length (ft)	Width (ft)	Fun_Class	AADT	Pave_Type	PCI
Miami_Rd	27988	Morris Ave	St Charles rd	294	25	Residential	N/A	AC	31
Miami_Rd	27987	Park Ct	Morris Ave	142	26	Residential	N/A	AC	32
Miami_Rd	27986	Frederick Ave	Park Ct	188	26	Residential	N/A	AC	23
MONROE_ST	104110	Linden Ave	Bellwood Ave	680	27	Residential	N/A	AC	49
MONROE_ST	104109	Eastern Ave	Linden Ave	666	27	Residential	N/A	AC	47
MONROE_ST	104108	31st Ave	Eastern Ave	673	27	Residential	N/A	AC	58
MONROE_ST	104107	Cernan Dr	31st Ave	665	27	Residential	N/A	AC	48
Monroe_St	103707	Marshall Ave	Mannheim Rd	686	27	Residential	N/A	AC	50
MONROE_ST	104106	Bellwood Ave	Unnamed Rd	471	27	Residential	N/A	AC	62
Morris_ve	60525	Washington Blvd	Butterfield Rd	555	25	Residential	N/A	AC	62
Morris_ve	60524	St. Paul Ave	Washington Blvd	426	25	Residential	N/A	AC	13
Morris_ve	60523	Butterfield Rd	Miami Rd	1,250	25	Residential	N/A	AC	50
MORRIS_AV	60242	St Charles Pl	Erie St	875	25	Residential	N/A	AC	24
N_RAILR_AV	91303	Bellwood Ave	Marshall Ave	391	25	Residential	N/A	AC	13
N_RAILR_AV	91302	Eastern Ave	Rice Ave	336	25	Residential	N/A	AC	11
N_RAILR_AV	91298	Frederick Ave	Unnamed Rd	149	25	Residential	N/A	AC	22
N_RAILR_AV	91304	Linden Ave	Bohland Ave	335	25	Residential	N/A	AC	13
N_RAILR_AV	91299	Marshall Ave	Morris Ave	335	25	Residential	N/A	AC	18
N_RAILR_AV	91305	Morris Ave	Frederick Ave	333	25	Residential	N/A	AC	14
N_RAILR_AV	91301	Rice Ave	Linden Ave	325	25	Residential	N/A	AC	14
N_RAILR_AV	91300	Bohland Ave	Bellwood Ave	329	25	Residential	N/A	AC	15
Oak_St	85430	Geneva Ave	46th Ave	330	30	Residential	N/A	AC	39
Oak_St	85431	50th Ave	51st Ave S	341	30	Residential	N/A	AC	51
Oak_St	85428	47th Ave	48th Ave	337	30	Residential	N/A	AC	49
OAK_ST	85918	23rd Ave	24th Ave	331	28	Residential	N/A	AC	3
Oak_St	85429	51st Ave	52nd AVve	332	30	Residential	N/A	AC	41
Oak_St	85425	MannHeim Rd	Englewood Ave	334	30	Residential	N/A	AC	47
OAK_ST	85920	25th Ave	27th Ave	711	28	Residential	N/A	AC	27
OAK_ST	85921	27th Ave	28th Ave	308	28	Residential	N/A	AC	40
OAK_ST	85916	24th Ave	25th Ave	338	28	Residential	N/A	AC	14
Oak_St	85860	31st Ave	32nd Ave	322	30	Residential	N/A	AC	33
Oak_St	85859	52nd Ave	Eastern Ave	312	30	Residential	N/A	AC	22
Oak_St	85424	48th Ave	49th Ave	336	30	Residential	N/A	AC	39
Oak_St	85421	Granville Ave	Geneva Ave	331	30	Residential	N/A	AC	38
Oak_St	85422	49th Ave	50th AVe	324	30	Residential	N/A	AC	44
OAK_ST	85917	22nd Ave	23rd Ave	304	28	Residential	N/A	AC	11
Oak_St	85420	52nd Ave	53rd Ave	336	30	Residential	N/A	AC	48
Oak_St	85423	Hyde Park Ave	Granville Ave	336	30	Residential	N/A	AC	14
Oak_St	85426	Englewood Ave	Hyde Park Ave	330	30	Residential	N/A	AC	26
OAK_ST	85915	28th Ave	Dead End	281	28	Residential	N/A	AC	30
Oak_St	85427	46th Ave	47th Ave	333	30	Residential	N/A	AC	49
OAK_ST	85919	22nd Ave	City Limit	164	28	Residential	N/A	AC	14
PARK_CT	28166	Miami Rd	Frederick Ave	357	28	Residential	N/A	AC	48
PARK_PL	124415	Jackson St.	Van Buren St	674	15	Residential	N/A	PCC	100
PARK_PL	124416	Harrison St	Van Buren St	521	15	Residential	N/A	PCC	100
PROVISO_DR	30031	City Limit	Dead End	1,114	59	Residential	N/A	AC	33
RAILROA__N	91029	Englewood Ave	Hyde Park Ave	332	18	Residential	N/A	AC	9
RAILROA__N	91028	Englewood Ave	Mannheim Rd	167	18	Residential	N/A	AC	2
RAILROA__N	91026	Granville Ave	Geneva Ave	329	18	Residential	N/A	AC	21

BranchID	SectionID	From	To	Length (ft)	Width (ft)	Fun_Class	AADT	Pave_Type	PCI
RAILROA__N	91025	48th Ave	49th Ave	345	18	Residential	N/A	AC	18
RAILROA__N	91027	Hyde Park Ave	Granville Ave	340	18	Residential	N/A	AC	20
RAILROA__N	91023	49th Ave	50th Ave	301	18	Residential	N/A	AC	18
RAILROA__N	91030	46th Ave	47th Ave	339	18	Residential	N/A	AC	21
RAILROA__N	91031	Geneva Ave	46th Ave	345	18	Residential	N/A	AC	14
RAILROA__N	91024	47th Ave	48th Ave	335	18	Residential	N/A	AC	27
RAILROA_VE	27544	49th Ave	48th Ave	322	29	Residential	N/A	AC	6
RAILROA_VE	27545	48th Ave	47th Ave	219	27	Residential	N/A	AC	10
RANDOLP_CT	124417	Randolph st	Dead End	392	25	Residential	N/A	AC	100
Randolp_St	83922	Granville Ave	Geneva Ave	333	30	Residential	N/A	AC	55
Randolp_St	83928	Englewood Ave	Hyde Park Ave	334	30	Residential	N/A	AC	19
RANDOLP_ST	84312	Eastern Ave	Dead End	807	26	Residential	N/A	AC	92
RANDOLP_ST	84376	22nd Ave	City Limit	167	24	Residential	N/A	AC	35
Randolp_St	83926	48th Ave	49th Ave	329	30	Residential	N/A	AC	49
Randolp_St	83930	47th Ave	48th Ave	341	30	Residential	N/A	AC	42
Randolp_St	83923	49th Ave	50th Ave	325	30	Residential	N/A	AC	24
Randolp_St	83931	51st S Ave	52nd Ave	332	30	Residential	N/A	AC	22
RANDOLP_ST	84375	23 Rd Ave	24th Ave	328	24	Residential	N/A	AC	35
Randolp_St	83925	Geneva Ave	46th	329	30	Residential	N/A	AC	36
Randolp_St	83927	Mannheim Rd	Englewood Ave	324	30	Residential	N/A	AC	22
RANDOLP_ST	84374	22nd Ave	23rd Ave	305	24	Residential	N/A	AC	43
Randolp_St	83921	52nd Ave	53rd Ave	334	30	Residential	N/A	AC	68
RANDOLP_ST	84373	24th Ave	25th Ave	336	24	Residential	N/A	AC	42
Randolp_St	83929	46th Ave	47th Ave	333	30	Residential	N/A	AC	29
Randolp_St	83932	50th Ave	51st Ave	342	30	Residential	N/A	AC	29
Randolp_St	83924	Hyde Park Ave	Granville Ave	336	30	Residential	N/A	AC	32
RICE_AV	45016	Jackson St	Van Buren St	664	27	Residential	N/A	AC	9
RICE_AV	45017	Van Buren St	Harrison St	518	27	Residential	N/A	AC	11
Rice_Ave	44655	St Charles Rd	Butterfield Rd	745	27	Residential	N/A	AC	57
Rice_Ave	44653	Erie St	St Charles Pl	926	27	Residential	N/A	AC	73
Rice_Ave	44657	Washington Blvd	Butterfield RD	1,066	27	Residential	N/A	AC	52
Rice_Ave	44654	Washington Blvd	St Paul Ave	663	27	Residential	N/A	AC	20
Rice_Ave	44656	St Charles Pl	St Charles Rd	627	27	Residential	N/A	AC	72
S_MAYWO_DR	29199	S MAYWOOD DR	City Limit	819	37	Residential	N/A	AC	14
St._Pau_ve	100722	Rice Ave	Linden Ave	342	35	Residential	N/A	AC	21
St._Pau_ve	100724	Eastern Ave	Rice Ave	344	35	Residential	N/A	AC	9
St._Pau_ve	100720	Frederick Ave	Mannheim Rd	333	35	Residential	N/A	AC	20
St._Pau_ve	100725	Morris Ave	Frederick Ave	337	35	Residential	N/A	AC	14
St._Pau_ve	100723	Bellwood Ave	Marshall Ave	353	35	Residential	N/A	AC	18
St._Pau_ve	100727	Linden Ave	Bohland Ave	339	35	Residential	N/A	AC	17
St._Pau_ve	100726	Marshall Ave	Morris Ave	337	35	Residential	N/A	AC	14
St._Pau_ve	100721	Bohland Ave	Bellwood Ave	316	35	Residential	N/A	AC	20
ST_CHAR_PL	89584	Marshall Ave	Marshall Ave	70	27	Residential	N/A	AC	29
ST_CHAR_PL	89583	Marshall Ct	Morris Ave	201	27	Residential	N/A	AC	40
ST_CHAR_PL	89582	Marshall Ave	Marshall Ct	128	27	Residential	N/A	AC	58
ST_CHAR_PL	89580	Linden Ave	Bohland Ave	333	27	Residential	N/A	AC	36
ST_CHAR_PL	89581	Bellwood Ave	Marshall Ave	330	27	Residential	N/A	AC	30
ST_CHAR_PL	89577	Bohland Ave	Bellwood Ave	333	27	Residential	N/A	AC	24
ST_CHAR_PL	89578	Rice Ave	Linden Ave	332	27	Residential	N/A	AC	35

BranchID	SectionID	From	To	Length (ft)	Width (ft)	Fun_Class	AADT	Pave_Type	PCI
ST_CHAR_PL	89579	Eastern Ave	Rice Ave	335	27	Residential	N/A	AC	28
ST_CHAR_PL	89576	St Charles Rd	Morris Ave	220	27	Residential	N/A	AC	37
St_Char_Rd	1288	Frederick Ave	Frederick Ave	86	66	Arterial	12,200	AC	50
St_Char_Rd	1260	48th Ave	47th Ave	338	47	Arterial	16,900	AC	31
St_Char_Rd	1272	Bellwood Ave	Bohland Ave	335	46	Arterial	12,200	AC	48
St_Char_Rd	1267	Davis Dr	S Spencer Ave	96	64	Arterial	16,900	AC	24
St_Char_Rd	1265	52nd Ave	51st Ave S	249	74	Arterial	16,900	AC	24
St_Char_Rd	1271	Rice Ave	Eastern Ave	327	45	Arterial	12,200	AC	38
St_Char_Rd	1257	Englewood Ave	Mannheim Rd	316	55	Arterial	16,900	AC	51
St_Char_Rd	1282	32nd Ave	32nd Ave	68	46	Arterial	13,100	AC	36
St_Char_Rd	1254	Speechley Blvd	S Spencer Ave	232	62	Arterial	16,900	AC	27
St_Char_Rd	1266	S Spencer Ave	52nd Ave	73	66	Arterial	16,900	AC	23
St_Char_Rd	1273	Marshall Ave	Bellwood	327	46	Arterial	12,200	AC	34
St_Char_Rd	1259	47th Ave	46th Ave	335	46	Arterial	16,900	AC	41
St_Char_Rd	1286	28th Ave	27th Ave	309	45	Arterial	13,100	AC	34
St_Char_Rd	1264	Mannheim Rd	Frederick Ave	293	68	Arterial	12,200	AC	42
St_Char_Rd	1276	27th Ave	26th Ave	233	44	Arterial	13,100	AC	37
St_Char_Rd	1263	51st Ave S	50th Ave	344	55	Arterial	16,900	AC	24
St_Char_Rd	1287	St Charles Pl	Miami Rd	820	46	Arterial	12,200	AC	23
St_Char_Rd	1278	29th Ave	28th Ave	252	44	Arterial	13,100	AC	14
St_Char_Rd	1270	Linden Ave	Rice Ave	339	46	Arterial	12,200	AC	43
St_Char_Rd	1255	Geneva Ave	Granville Ave	340	45	Arterial	16,900	AC	29
St_Char_Rd	1277	27th Ave	27th Ave	81	47	Arterial	13,100	AC	34
St_Char_Rd	8511	22nd Ave	City Limit	188	45	Collector	8,100	AC	41
St_Char_Rd	1284	Frederick Ave	St Charles Pl	69	52	Arterial	12,200	AC	44
St_Char_Rd	1281	32nd Ave	31st Ave	266	46	Arterial	13,100	AC	40
St_Char_Rd	1262	46th Ave	Geneva Ave	322	47	Arterial	16,900	AC	23
St_Char_Rd	1258	Hyde Park Ave	Englewood Ave	335	46	Arterial	16,900	AC	19
St_Char_Rd	8510	25th Ave	24th Ave	340	46	Collector	8,100	AC	22
St_Char_Rd	8513	24th Ave	23rd Ave	335	42	Collector	8,100	AC	37
St_Char_Rd	1283	Miami Rd	Marshall Ave	94	47	Arterial	12,200	AC	30
St_Char_Rd	1261	49th Ave	48th Ave	341	45	Arterial	16,900	AC	15
St_Char_Rd	1285	31st Ave	30th Ave	450	48	Arterial	13,100	AC	36
St_Char_Rd	1269	26th Ave	25th Ave	315	12	Arterial	13,100	AC	29
St_Char_Rd	1268	50th Ave	49th Ave	331	47	Arterial	16,900	AC	11
St_Char_Rd	1256	Granville Ave	Hyde Park Ave	331	43	Arterial	16,900	AC	25
St_Char_Rd	1279	28th Ave	28th Ave	82	44	Arterial	13,100	AC	13
St_Char_Rd	1274	Bohland Ave	Linden Ave	332	46	Arterial	12,200	AC	31
St_Char_Rd	1275	Eastern Ave	32nd Ave	315	45	Arterial	13,100	AC	27
St_Char_Rd	1280	30th Ave	29th Ave	317	45	Arterial	13,100	AC	35
St_Char_Rd	8512	23rd Ave	22nd Ave	302	45	Collector	8,100	AC	18
Twining_St	27552	Englewood Ave	Mannheim rd	334	28	Residential	N/A	AC	29
Twining_St	27547	51st Ave	50th Ave	348	31	Residential	N/A	AC	60
Twining_St	27551	49th Ave	48th Ave	338	31	Residential	N/A	AC	43
Twining_St	27549	Geneva Ave	Hyde Park Ave	333	31	Residential	N/A	AC	38
Twining_St	27555	48th Ave	47th Ave	341	30	Residential	N/A	AC	41
Twining_St	27554	47th Ave	46th Ave	330	30	Residential	N/A	AC	54
Twining_St	27556	50th Ave	49th Ave	324	30	Residential	N/A	AC	52
Twining_St	27553	Hyde Park Ave	Englewood Ave	332	31	Residential	N/A	AC	62

BranchID	SectionID	From	To	Length (ft)	Width (ft)	Fun_Class	AADT	Pave_Type	PCI
Twining_St	27548	Geneva Ave	Granville Ave	333	30	Residential	N/A	AC	48
Twining_St	27550	46th Ave	Geneva Ave	328	30	Residential	N/A	AC	58
VAN_BUR_ST	107821	25th Ave	Dead End	810	29	Residential	N/A	AC	27
Van_Bur_St	107530	Rice Ave	Linden Ave	327	27	Residential	N/A	AC	18
Van_Bur_St	107529	Linden Ave	Bohland Ave	340	27	Residential	N/A	AC	19
Van_Bur_St	107528	Eastern Ave	Rice Ave	339	27	Residential	N/A	AC	10
Van_Bur_St	107527	Bohland Ave	Bellwood Ave	330	27	Residential	N/A	AC	21
VAN_BUR_ST	107841	23rd Ave	24th Ave	322	29	Residential	N/A	AC	58
VAN_BUR_ST	107839	22nd Ave	23rd Ave	332	29	Residential	N/A	AC	64
VAN_BUR_ST	107838	24th Ave	25th Ave	343	29	Residential	N/A	AC	31
Van_Bur_St	107525	31st Ave	32nd Ave	331	27	Residential	N/A	AC	27
VAN_BUR_ST	107840	22nd Ave	City Limit	168	29	Residential	N/A	AC	16
Van_Bur_St	107523	30th Ave	31st Ave	332	27	Residential	N/A	AC	20
Van_Bur_St	107531	Bellwood Ave	Marshall Ave	445	27	Residential	N/A	AC	36
Van_Bur_St	107522	Marshall Ave	Mannheim Rd	939	27	Residential	N/A	AC	43
Van_Bur_St	107526	32nd Ave	Eastern Ave	340	27	Residential	N/A	AC	23
Van_Bur_St	107524	Cernan Dr	30th Ave	336	27	Residential	N/A	AC	9
Warren_ve	102378	Bellwood Ave	Mannheim Rd	1,342	28	Residential	N/A	AC	12
Warren_ve	102379	Madison St	Bellwood Ave	1,217	28	Residential	N/A	AC	19
WARREN_AV	102749	23rd Ave	24th Ave	316	23	Residential	N/A	AC	72
WARREN_AV	102747	24th Ave	25th Ave	331	23	Residential	N/A	AC	81
WARREN_AV	102748	22rd Ave	23rd Ave	320	23	Residential	N/A	AC	82
WARREN_AV	102750	22nd Ave	City Limit	156	23	Residential	N/A	AC	65
Washing_vd	8720	23rd Ave	22nd Ave	307	35	Collector	6,800	AC	58
Washing_vd	1458	Linden Ave	Rice Ave	339	56	Arterial	13,600	AC	12
Washing_vd	8718	22nd Ave	City Limit	99	36	Collector	6,800	AC	100
Washing_vd	1460	Marshall Ave	Bellwood Ave	334	66	Arterial	13,600	AC	35
Washing_vd	1454	Mannheim Rd	Frederick Ave	339	61	Arterial	13,600	AC	56
Washing_vd	1463	28th Ave	25th Ave	918	74	Arterial	13,600	AC	41
Washing_vd	8717	25th Ave	24th Ave	345	52	Collector	6,800	AC	27
Washing_vd	1459	Bohland Ave	Linden Ave	339	53	Arterial	13,600	AC	16
Washing_vd	1456	Rice Ave	Eastern Ave	341	63	Arterial	13,600	AC	28
Washing_vd	1457	Bellwood Ave	Bohland Ave	322	68	Arterial	13,600	AC	20
Washing_vd	1461	Frederick Ave	Morris Ave	335	56	Arterial	13,600	AC	18
Washing_vd	1455	Eastern Ave	28th Ave	1,747	56	Arterial	13,600	AC	39
Washing_vd	1462	Morris Ave	Marshall Ave	336	58	Arterial	13,600	AC	19
Washing_vd	8719	24th Ave	23rd Ave	325	35	Collector	6,800	AC	50
Wilcox_ve	104739	Marshall Ave	Mannheim Rd	809	26	Residential	N/A	AC	21
Wilcox_ve	104743	Linden Ave	Bellwood Ave	676	26	Residential	N/A	AC	33
Wilcox_ve	104745	Marik Rd	Bellwood Ave	360	26	Residential	N/A	AC	21
Wilcox_ve	104741	Marik Rd	Marshall Ave	172	26	Residential	N/A	AC	32
Wilcox_ve	104742	Cernan Dr	31st Ave	672	26	Residential	N/A	AC	26
Wilcox_ve	104744	31st Ave	Eastern Ave	675	26	Residential	N/A	AC	59
Wilcox_ve	104740	Eastern Ave	Linden Ave	663	26	Residential	N/A	AC	28
ZUELKE_DR	47332	32nd Ave	Grant Ave	747	27	Residential	N/A	AC	13