



Council of Mayors Executive Committee

April 20, 2021

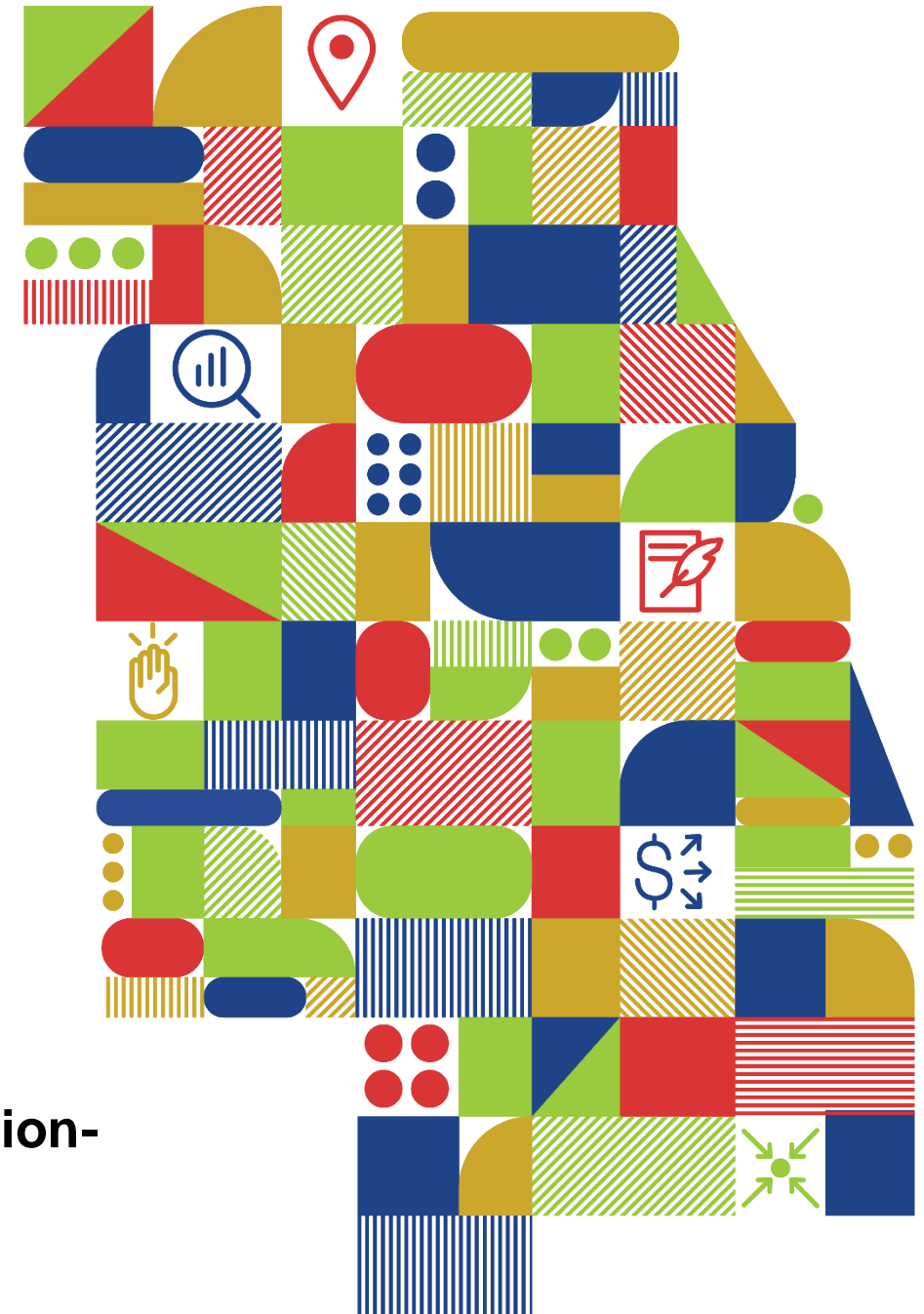
Meeting will start at 9:30am

To mute/unmute your phone use *6

Use the Chat Box for questions (staff are monitoring)

Use your full name for the login

**Only Committee members participate in the conversation-
except during the public comment agenda item**



1.0 Call to order/introductions

Chairman Schielke

Staff will read the names of committee members that are logged-in and will then ask committee members that were missed or on the phone to introduce themselves

*To mute/unmute your phone use *6*

2.0 Agenda changes and announcements

Chairman Schielke

Please mute your conference line or phone line (*6 for phone connections) when not speaking

To ask a question, please use the chat box

When making a motion, please state your name

3.0 Approval of minutes

Chairman Schielke

Draft Minutes from January 19, 2021

ACTION REQUESTED: Approval

Committee Members: Remember to unmute (*6) your line and state your name when making a motion

4.0 CMAP update

CMAP leadership

CMAP leadership will provide an update on recent actions taken by the agency.

ACTION REQUESTED: Information

5.0 STP Project Selection Committee update

Kama Dobbs

Staff will provide an update on activities of the STP Project Selection Committee.

ACTION REQUESTED: Information

6.0 IDOT update

Chad Riddle

IDOT Bureau of Local Roads staff will provide an update.

ACTION REQUESTED: Information

7.0 GARE membership overview

CMAP staff

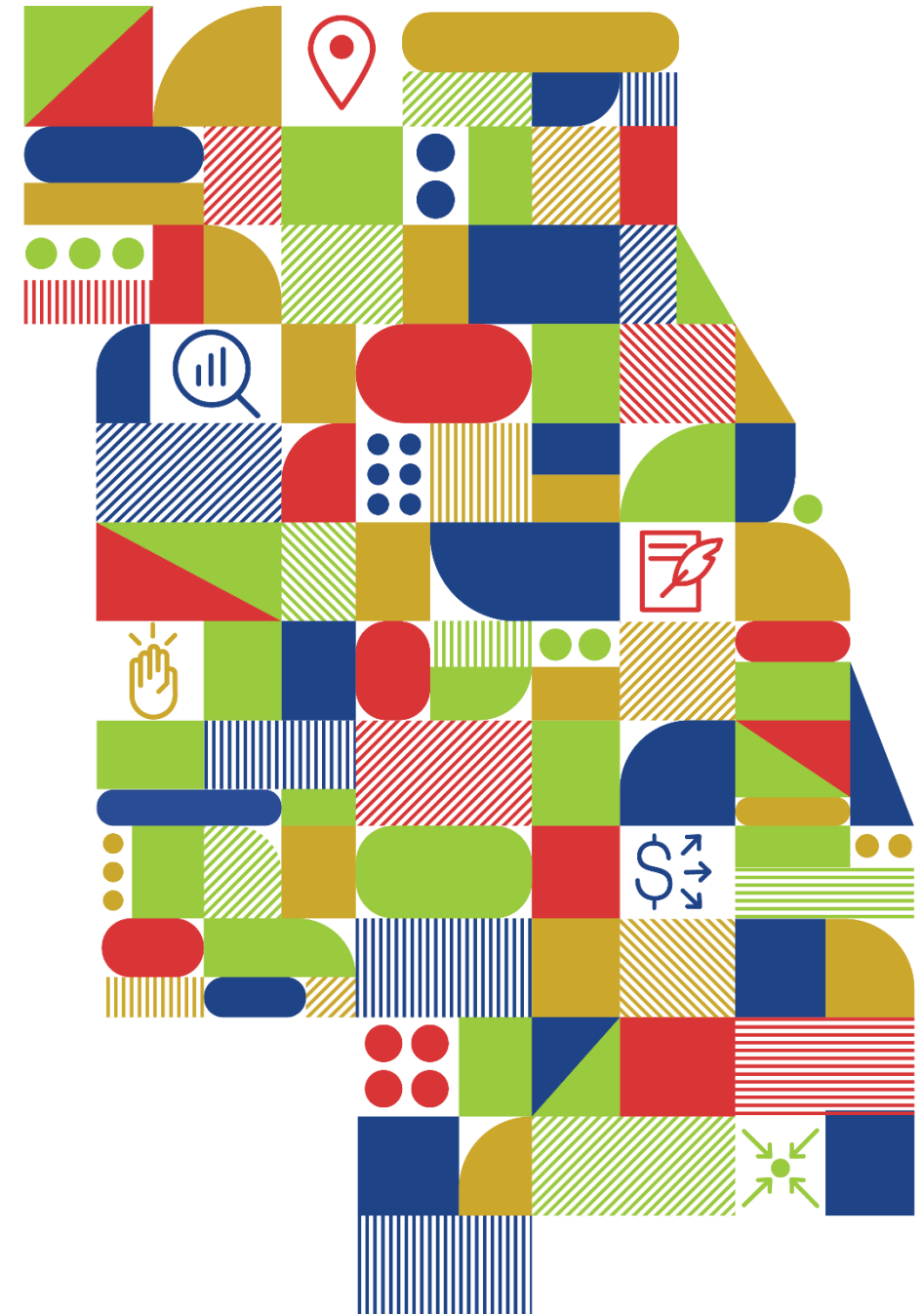
Staff will provide an overview of CMAP's ongoing DEI work, including GARE membership.

ACTION REQUESTED: Discussion



Diversity, Equity and Inclusion at CMAP

April 20, 2021



Employee groups

Diversity and Inclusion Working Group

Employee Resource Group for colleagues of color

WeIMAP Committee

Appreciation Team

Diversity, equity, and inclusion (DEI) workshops

July 2020: Standing in Solidarity with Black Americans:
Disrupting Anti-Black Racism

November 2020: Building an Organizational Culture and
Climate of Race Equity

March 2021: LGBTQIA-Affirming Best Practices

Upcoming DEI initiatives

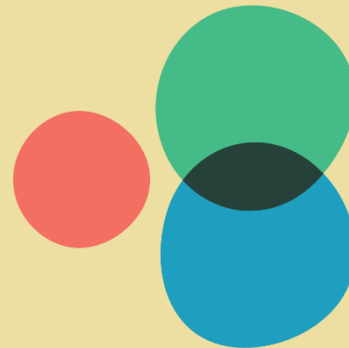
May 2021: Disability Awareness workshops

DEI Roadmap

- Journey to building and sustaining a more inclusive culture
- Continual review of best practices and metrics

Government Alliance on Race and Equity (GARE)

A national network of government working to achieve racial equity and advance opportunities for all.



Othering
& Belonging
Institute

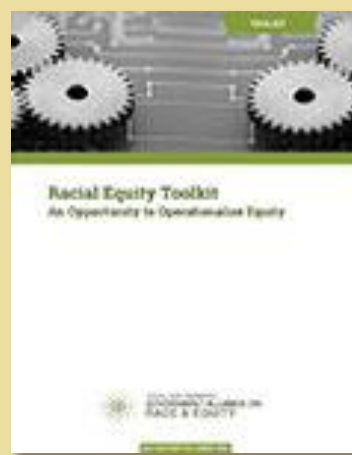
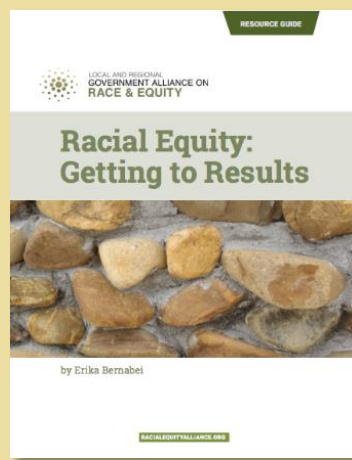
<https://www.racialequityalliance.org/>

GARE Membership Benefits

- Peer exchange and mentorship
- Technical Assistance from experts in the field
- Administration of an Employee Equity Assessment
- Discount on GARE trainings
- Access to GARE portal and resources

GARE Resources

- Subject Area Working Groups
- Skill-building webinars and one-on-ones
- Access to tools such as:



Projects

Data tool to support equitable CARES Act funding for Cook County

Criteria for Surface Transportation Program shared fund

Report on inequity in regional transportation fees, fines and fares

Equitable public **engagement**

8.0 Economic impacts of COVID

Austen Edwards

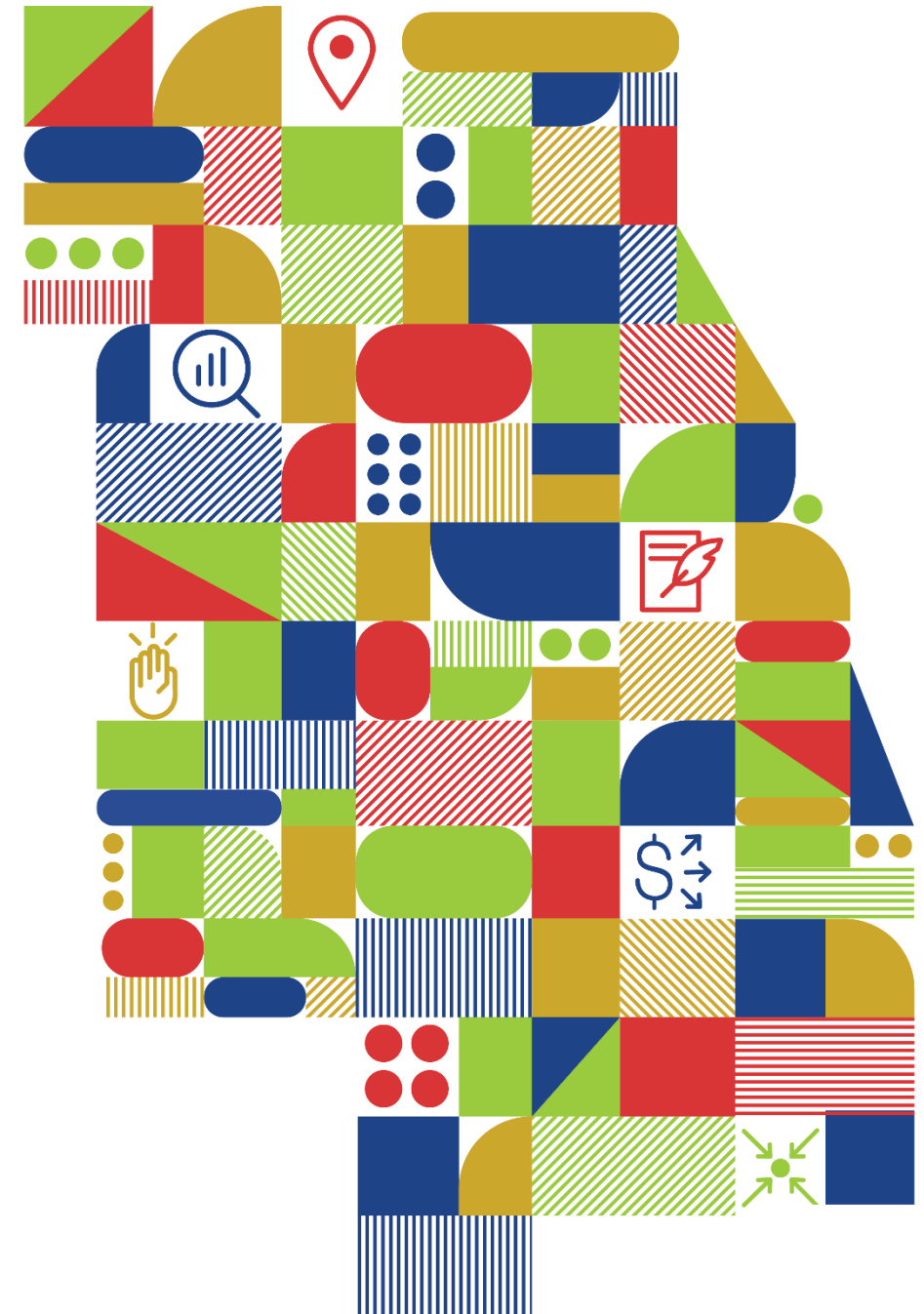
Staff will review key economic indicators and discuss the impact COVID-19 has had on the region's economy.

ACTION REQUESTED: Discussion



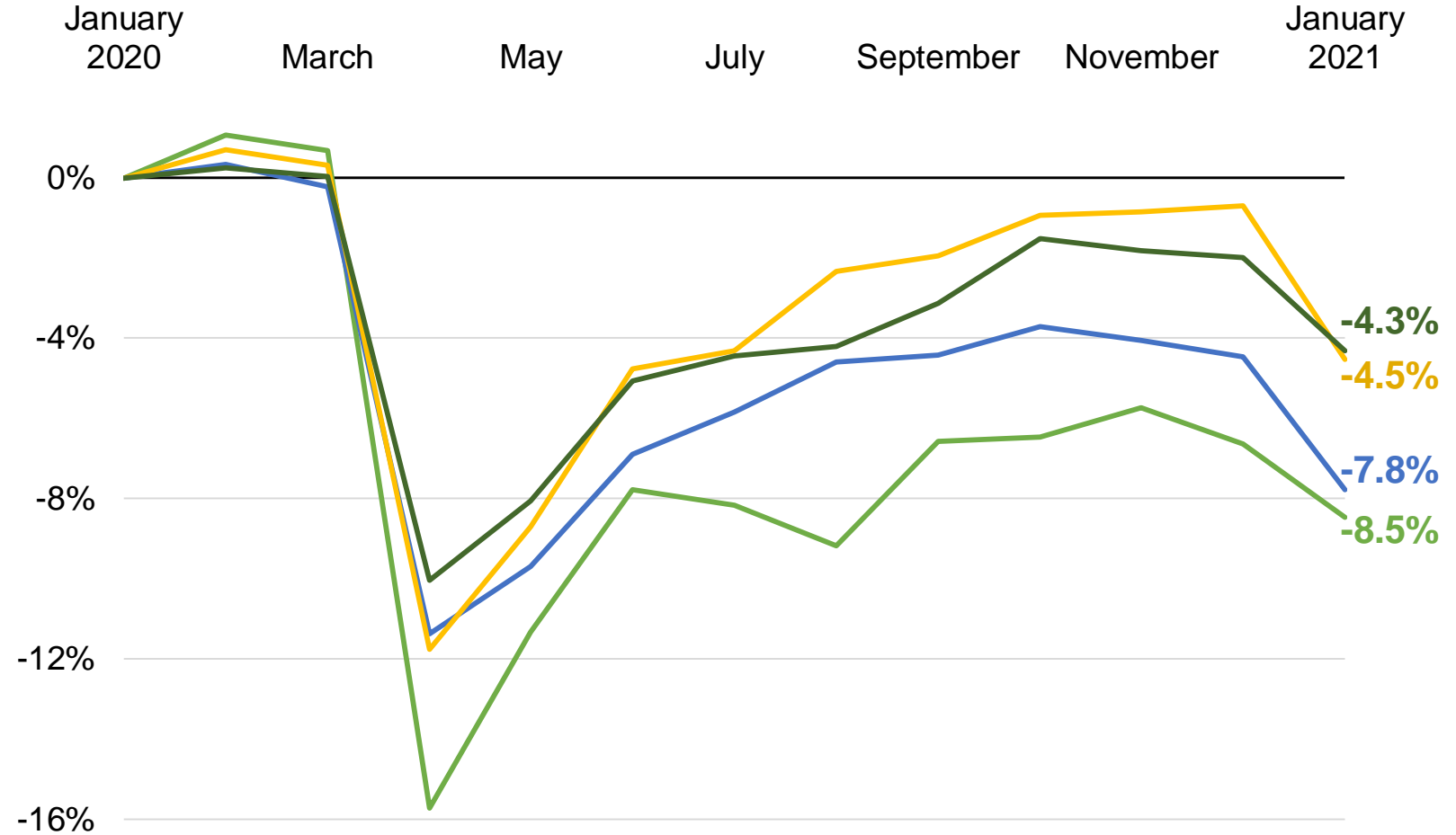
COVID-19's regional economic impacts

April 20, 2021



Cumulative change in total nonfarm employment, 2019-20

- Chicago
- Illinois
- Midwest
- U.S. average



Note: Indexed to December 2019. Chicago area data include only the seven counties of northeastern Illinois. Midwest data include Illinois, Indiana, Iowa, Kansas, Michigan, Minnesota, Missouri, Nebraska, North Dakota, Ohio, South Dakota, and Wisconsin. Not seasonally adjusted.

Source: Chicago Metropolitan Agency for Planning analysis of U.S. Bureau of Labor Statistics data.

Annual unemployment rates by population group in Illinois, 2020

Total age 20-24:	18.0 percent
Black men:	16.8 percent
Latino women:	12.7 percent
Black women:	12.4 percent
Latino men:	11.5 percent
White women:	9.3 percent
Total:	9.1 percent
White men:	7.8 percent

Note: Data for Asian Americans in 2020 are not available because they were not part of the underlying tabulations for national population controls from the Current Population Survey.

Source: Chicago Metropolitan Agency for Planning analysis of U.S. Bureau of Labor Statistics data, Current Population Survey.

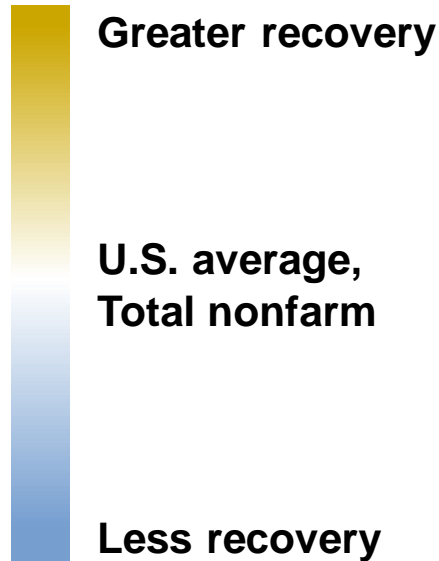
Labor force participation rate for population age 16 years or older in Illinois, 2010-20

Population group	2010	2019	2020
Total	66.9%	64.5%	62.7%
Asian	69.7%	65.8%	n/a
Black	58.2%	60.7%	56.0%
Hispanic or Latino	70.6%	70.1%	69.6%
White	68.3%	65.1%	63.8%

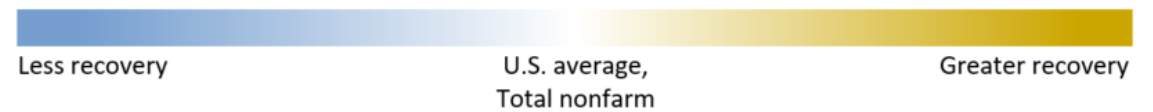
Note: Data for Asian Americans in 2020 are not available because they were not part of the underlying tabulations for national population controls from the Current Population Survey.

Source: Chicago Metropolitan Agency for Planning analysis of U.S. Bureau of Labor Statistics data, Current Population Survey.

Over-the-year jobs change by major industry sector, Dec. 2019 to Dec. 2020



	New York	Los Angeles	Chicago	U.S. average	Houston
Total nonfarm	-10.0%	-8.8%	-7.3%	-5.9%	-4.4%
Manufacturing	-7.8%	-8.1%	-4.3%	-4.2%	-9.3%
Trade, transportation, and utilities	-7.5%	-3.7%	-2.3%	-2.4%	-2.5%
Information	-1.6%	-14.8%	-6.3%	-8.8%	-8.6%
Financial activities	-4.0%	-1.7%	-2.8%	-0.7%	-3.0%
Professional and business services	-9.4%	-5.5%	-4.2%	-3.7%	+1.0%
Education and health services	-7.4%	-4.8%	-5.1%	-4.7%	-1.4%
Leisure and hospitality	-39.4%	-30.3%	-32.2%	-22.7%	-10.9%
Other services	-13.8%	-22.1%	-10.0%	-7.4%	-11.8%
Government	-3.7%	-6.0%	-7.6%	-5.5%	-1.5%

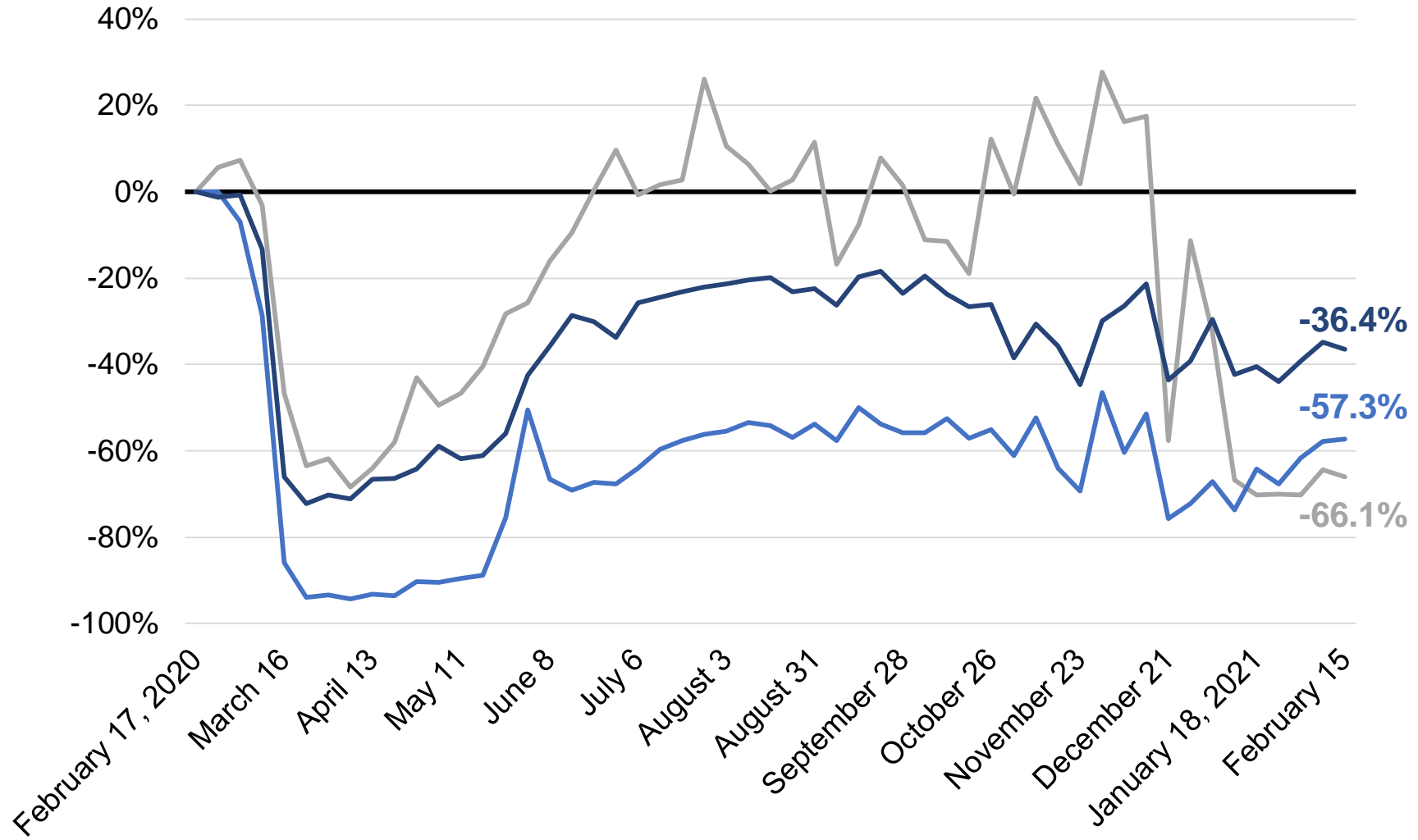


Note: Calculated December 2019 to December 2020. Data represent U.S. Census Bureau metropolitan statistical areas.

Source: Chicago Metropolitan Agency for Planning analysis U.S. Bureau of Labor Statistics data.

Cumulative change in weekly total consumer spending by category, 2020-21

- Restaurants and bars
- Entertainment and recreation
- Hospitality and travel

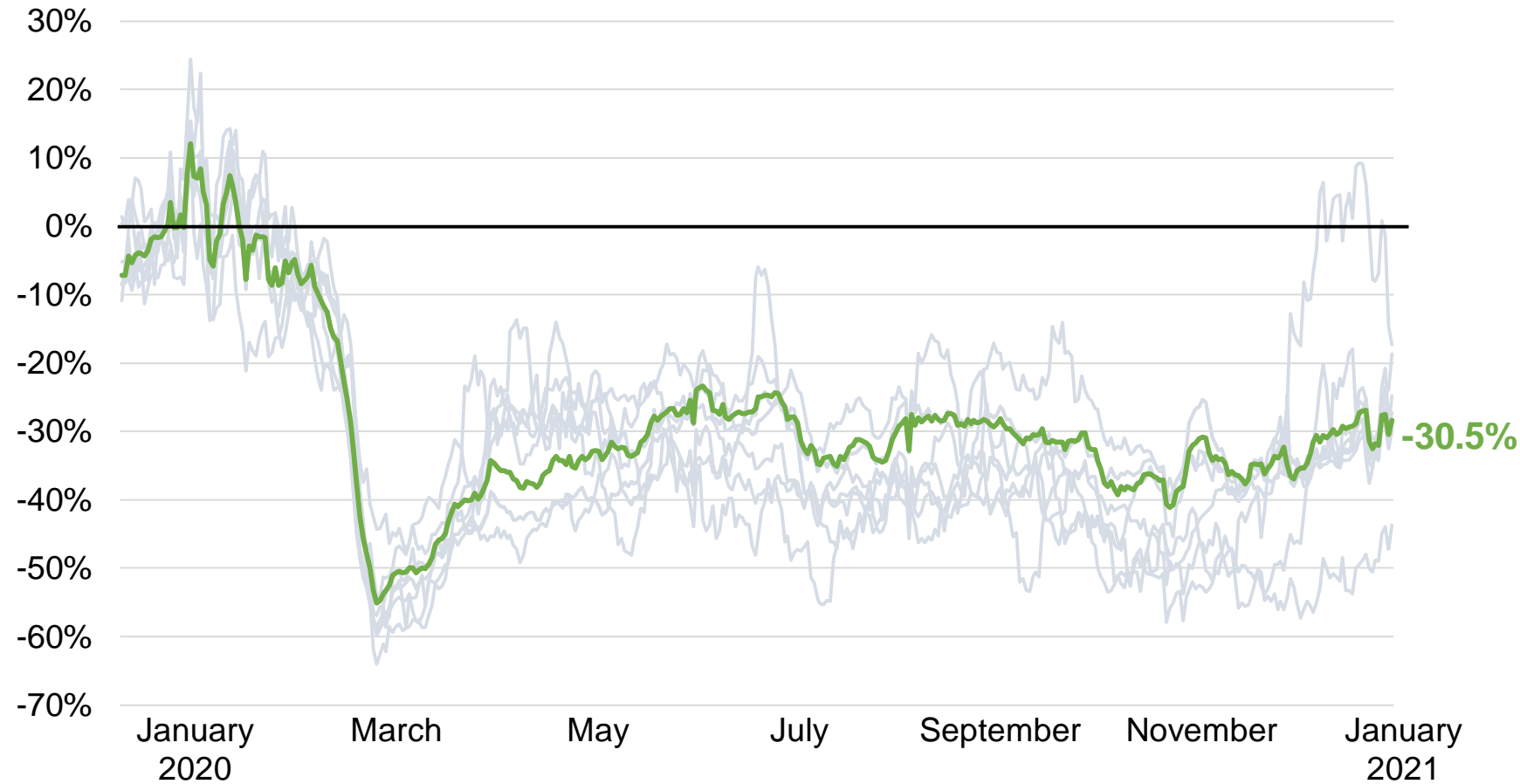


Note: Data represent only the seven counties of northeastern Illinois.

Source: Chicago Metropolitan Agency for Planning analysis of Replica data.

Cumulative change in daily small business revenues, 2020-21

● Illinois

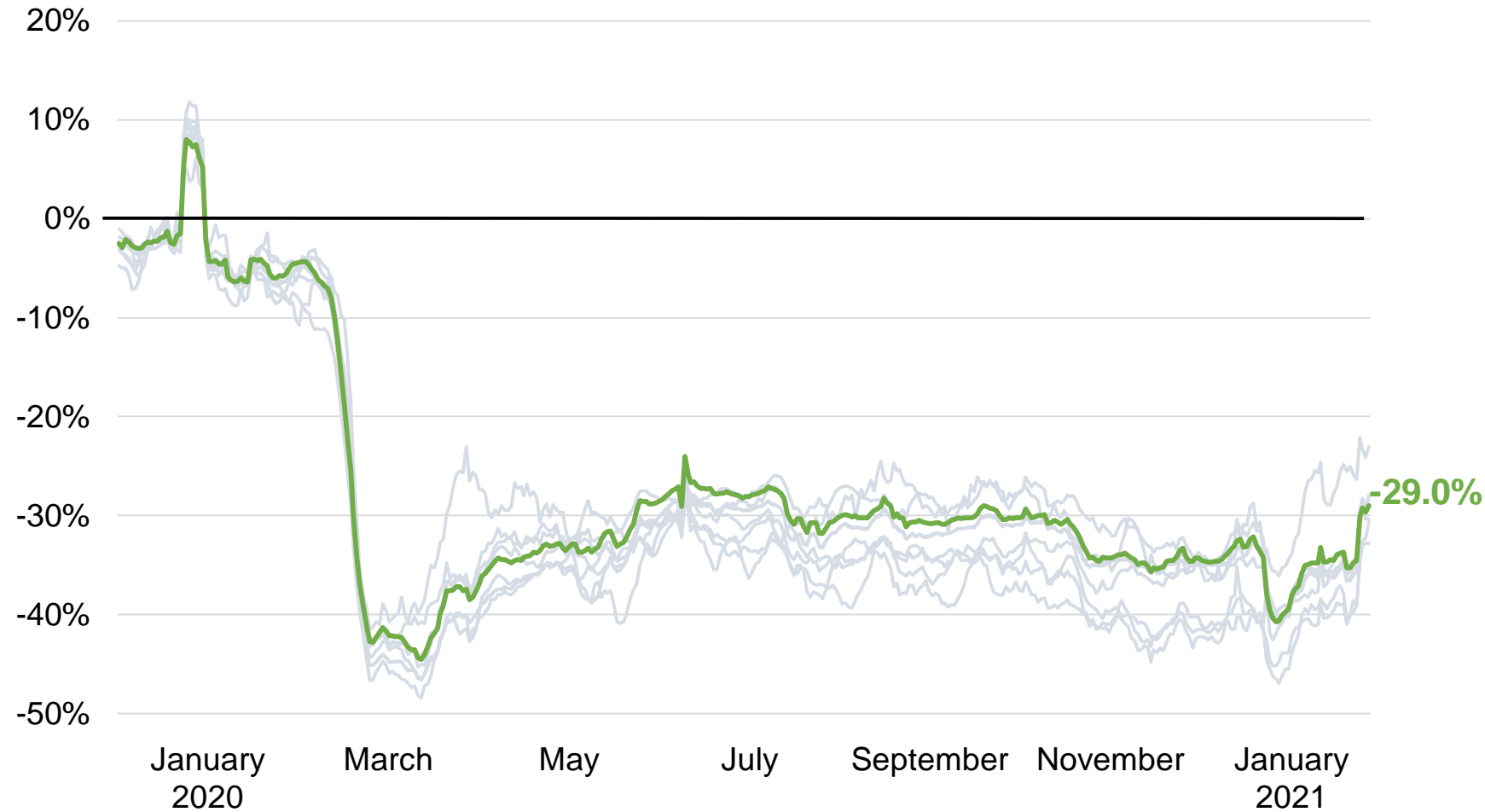


Note: Other data include the City of Chicago and the seven counties of northeastern Illinois. Data present a 7-day moving average indexed to January 4-31, 2020. Small businesses include those with annual revenue below the Small Business Administration's thresholds and a maximum employment ranging 100-1,500, depending on the industry.

Source: Chicago Metropolitan Agency for Planning analysis of Womply data via Opportunity Insights' Economic Tracker.

Cumulative change in the number of small businesses open, 2020-21

● Illinois

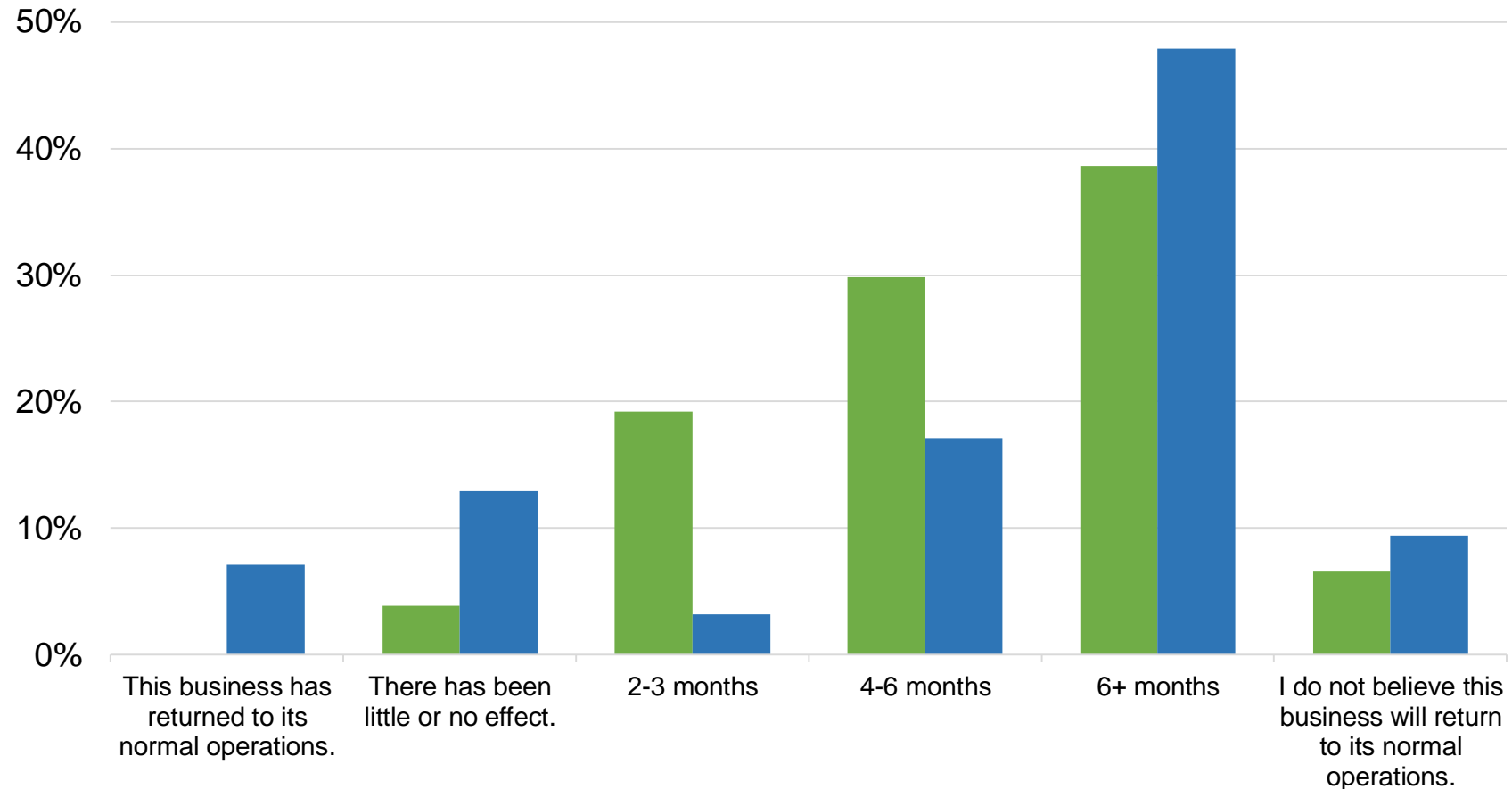


Note: Other data include the City of Chicago and the seven counties of northeastern Illinois. Data present a 7-day moving average indexed to January 4-31, 2020. Small businesses include those with annual revenue below the Small Business Administration's thresholds and a maximum employment ranging 100-1,500, depending on the industry. Businesses are defined as open if they have had at least one transaction in the previous 3 days.

Source: Chicago Metropolitan Agency for Planning analysis of Womply data via Opportunity Insights' Economic Tracker.

Small business expectations of recovery from COVID-19, 2020-21

- April 26-May 2, 2020
- February 15-21, 2021

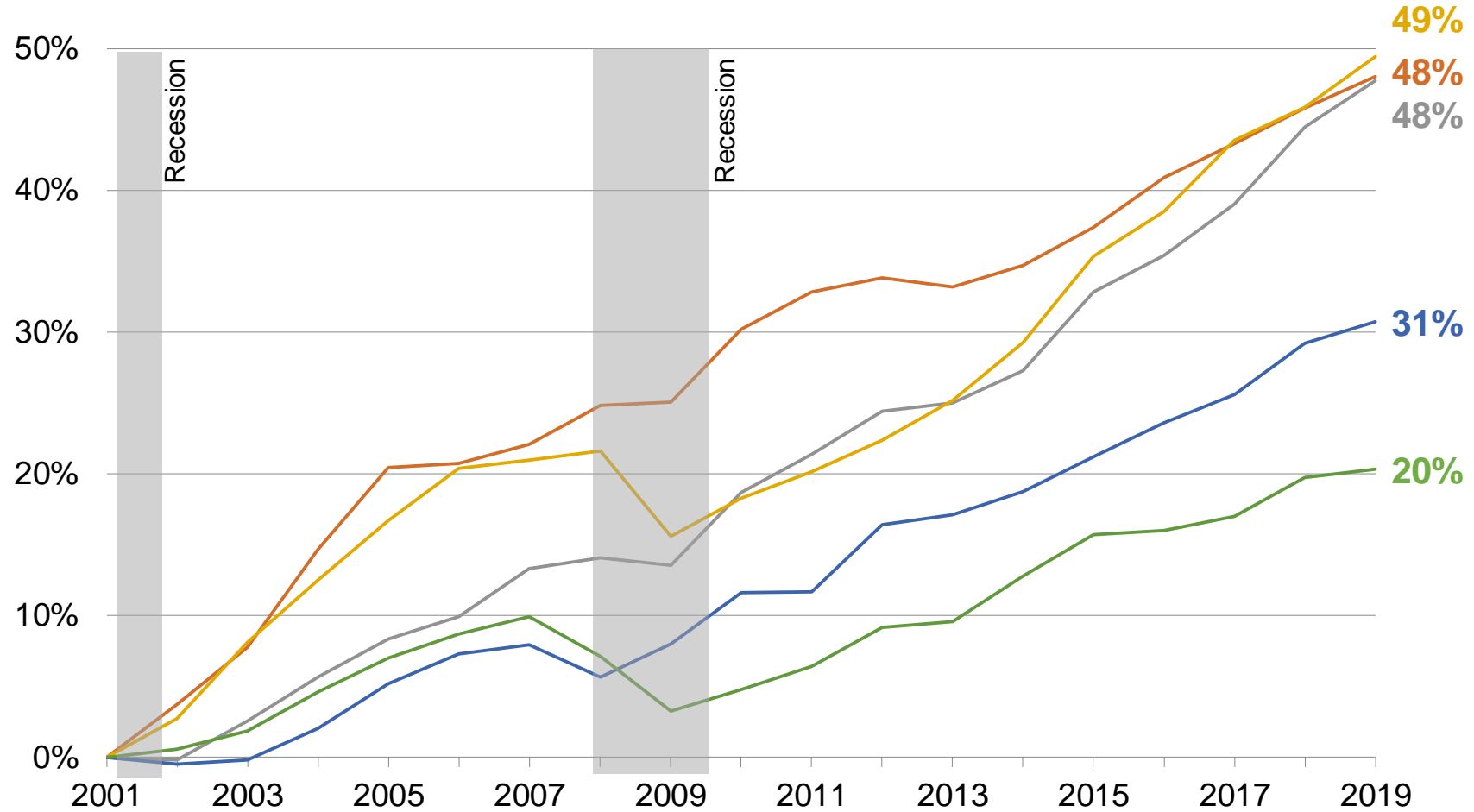


Note: Data represent the Chicago-Naperville-Elgin, IL-IN-WI metropolitan statistical area. Survey asks, "In your opinion, how much time do you think will pass before this business returns to its normal level of operations relative to one year ago?" Small businesses are defined as a single location business with between 1-499 employees and at least \$1,000 in annual revenue.

Source: Chicago Metropolitan Agency for Planning analysis of U.S. Census Bureau data, Small Business Pulse Survey.

Cumulative growth in real gross regional product, 2001-19

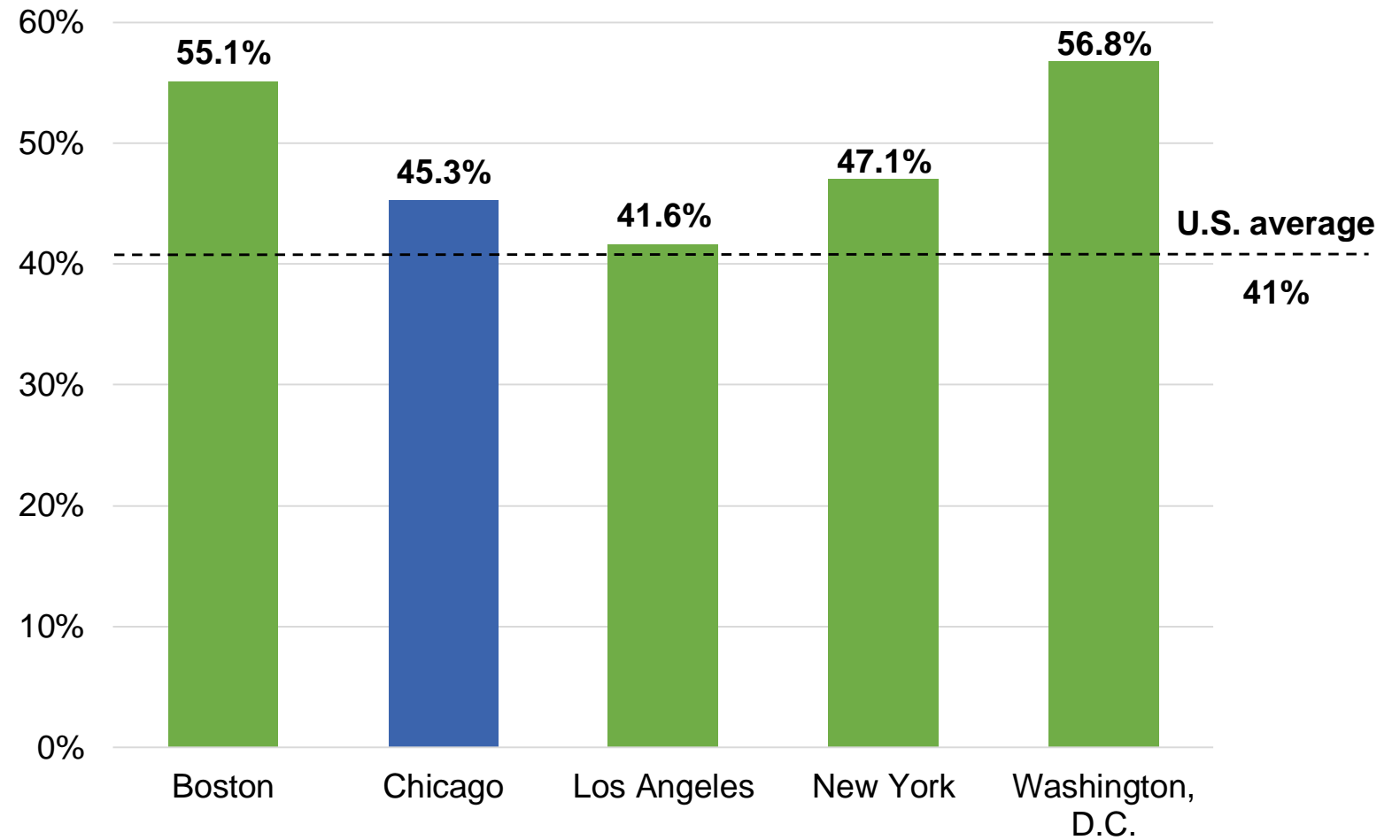
- Chicago
- Boston
- Los Angeles
- New York
- Washington, D.C.



Note: Indexed to 2001. Data reflect U.S. Census Bureau metropolitan statistical areas.

Source: Chicago Metropolitan Agency for Planning analysis of U.S. Bureau of Economic Analysis data.

Share of population age 25 and over with an associate degree or higher, 2019

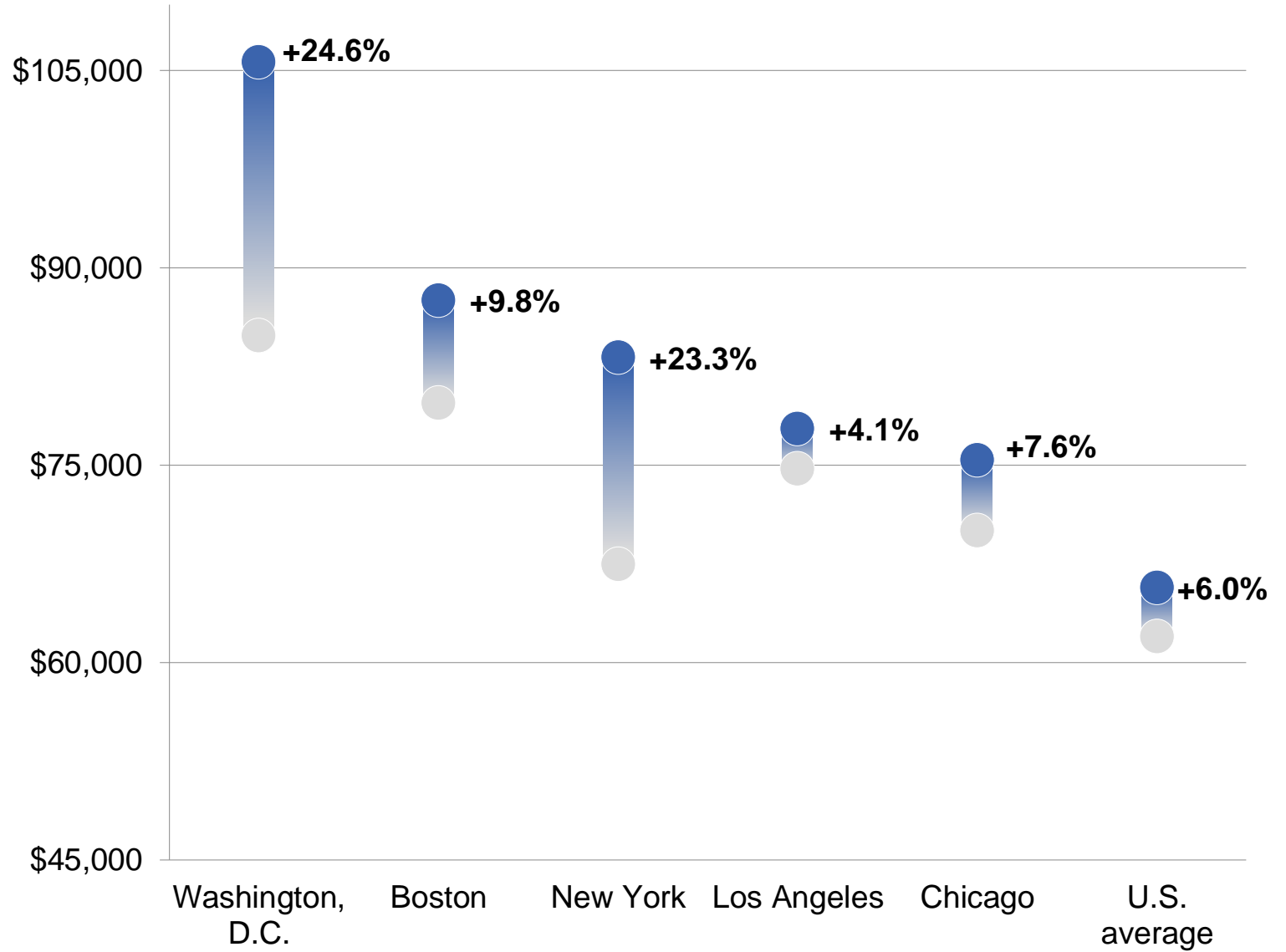


Note: Data reflect U.S. Census Bureau metropolitan statistical areas.

Source: Chicago Metropolitan Agency for Planning analysis of America Community Survey data, 5-year estimates 2015-19.

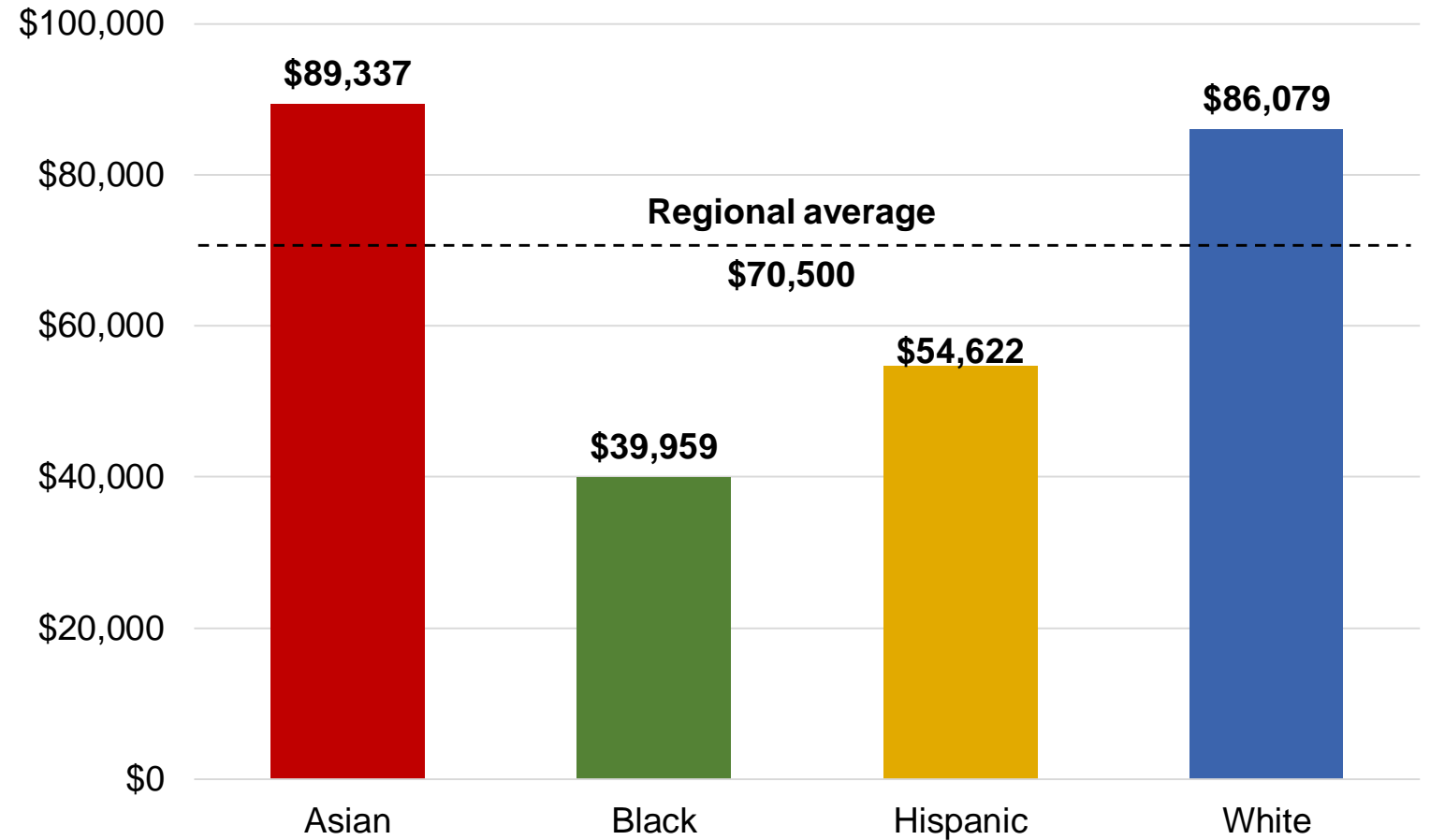
Change in real median household income, 1989-2019, in 2019 dollars

- 1989
- 2019



Source: Chicago Metropolitan Agency for Planning analysis 1990 Decennial Census and American Community Survey data, 1-year estimates 2019.

Median household income by race and ethnicity, 2019



Note: Data represent the U.S. Census Bureau's Chicago-Naperville-Elgin, IL-IN-WI metropolitan statistical area.

Source: Chicago Metropolitan Agency for Planning data, 5-year estimates 2015-19.

9.0 Local Government Network

Patrick Day

Staff will update the committee on recent Local Government Network initiatives.

ACTION REQUESTED: Information

10.0 Legislative update

Gordon Smith

Staff will provide an update on relevant legislative activities.

ACTION REQUESTED: Information

11.0 Other business

Chairman Schielke

Committee members joining the meeting late should verbally make themselves known or send an email to transportation@cmmap.illinois.gov so your attendance is recorded.

12.0 Public comment

Comments emailed prior to the meeting will be read by staff

Send a request through chat to make a verbal comment

Callers: wait for chairman to acknowledge you and remember to state your name

13.0 Next meeting

The next meeting will be by July 20, 2021

14.0 Adjournment



**Next Meeting:
July 20, 2021**

Thank you!

