

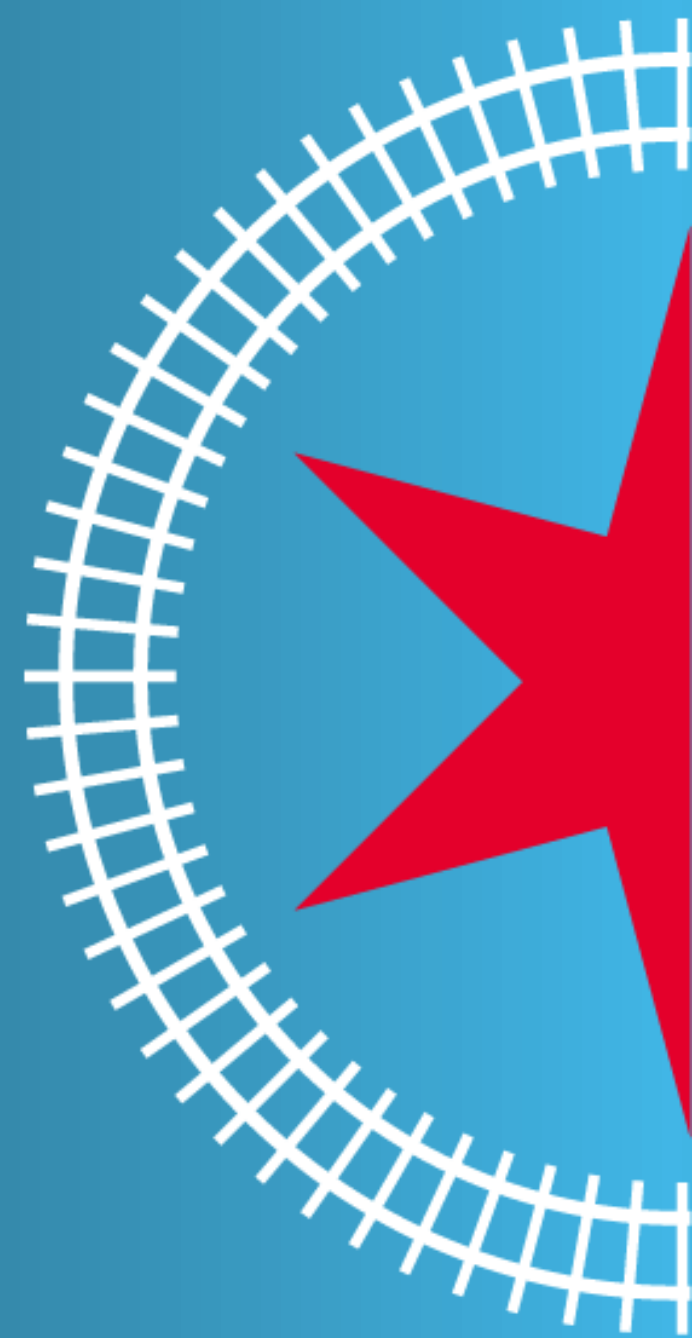
Chicago Rail Futures II Study *And* Southwest Industrial Corridors Study

CMAP Freight Committee Update

Presented by the Chicago Department of Transportation

May 17, 2021

Chicago Rail Futures II (CRFII) Study





Chicago Rail Futures II (CRFII) Study

CDOT undertook the Freight Rail Futures Study, the first ever effort to estimate the economic impacts of rail to the region



2003

A review of the CREATE Program estimated the 30-year benefits of the program as \$31.5 billion* with costs of less than \$5 billion



2013

The CRFII study will build upon existing and ongoing work to create a more comprehensive and current understanding of the economic and other impacts of rail on the Chicago region



2021

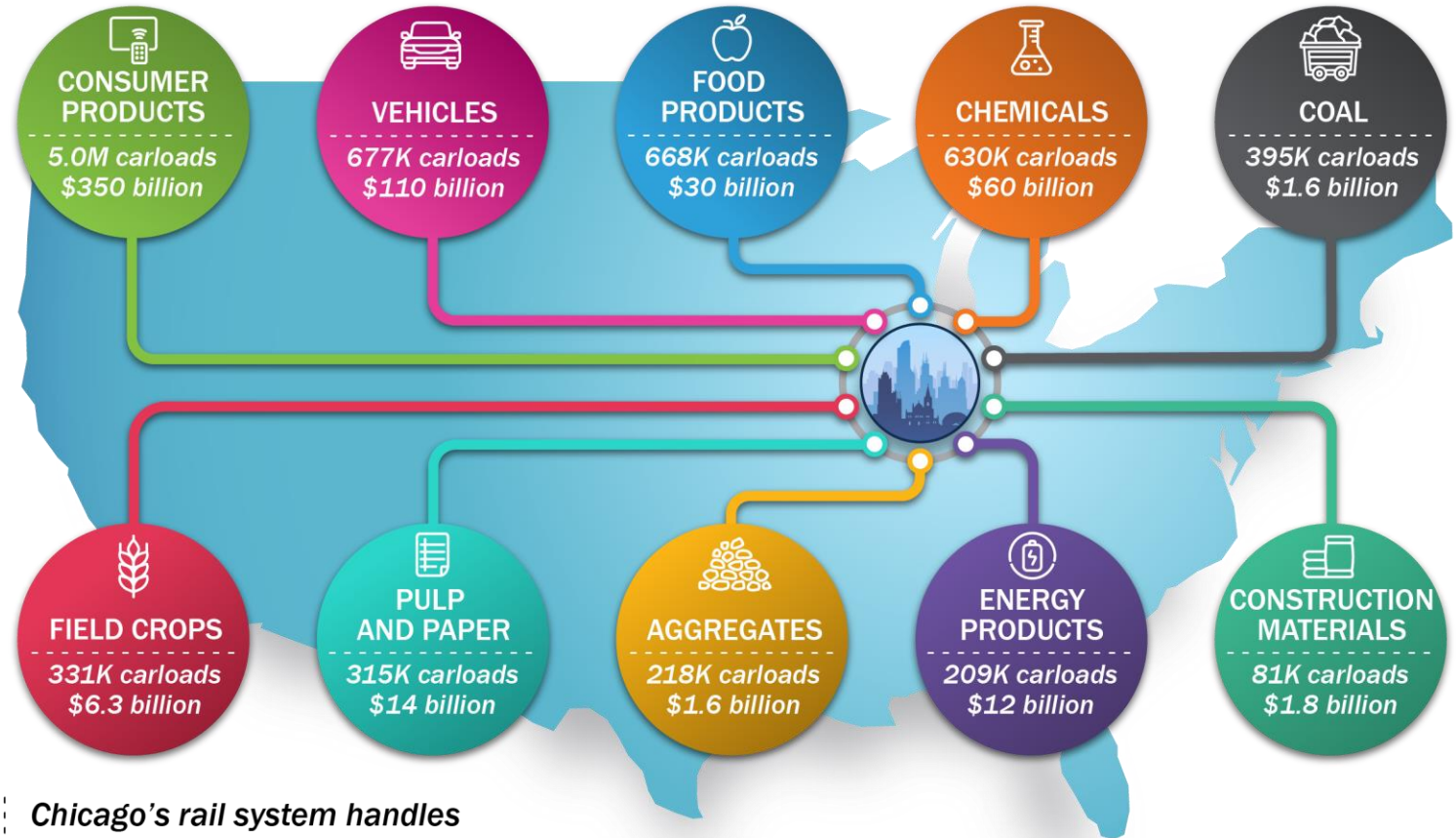
Study helped make the case for the creation of



**Based on USDOT guidance for benefit cost analysis of transportation investments*

Chicago's Rail Network is Critical to the National and Regional Economy

CHICAGO REGION TOP COMMODITIES BY RAIL



Chicago's rail system handles

47% OF INTERMODAL RAIL CONTAINERS
& **28%** OF RAIL CARS IN THE U.S.

\$641 BILLION WORTH OF GOODS EACH YEAR

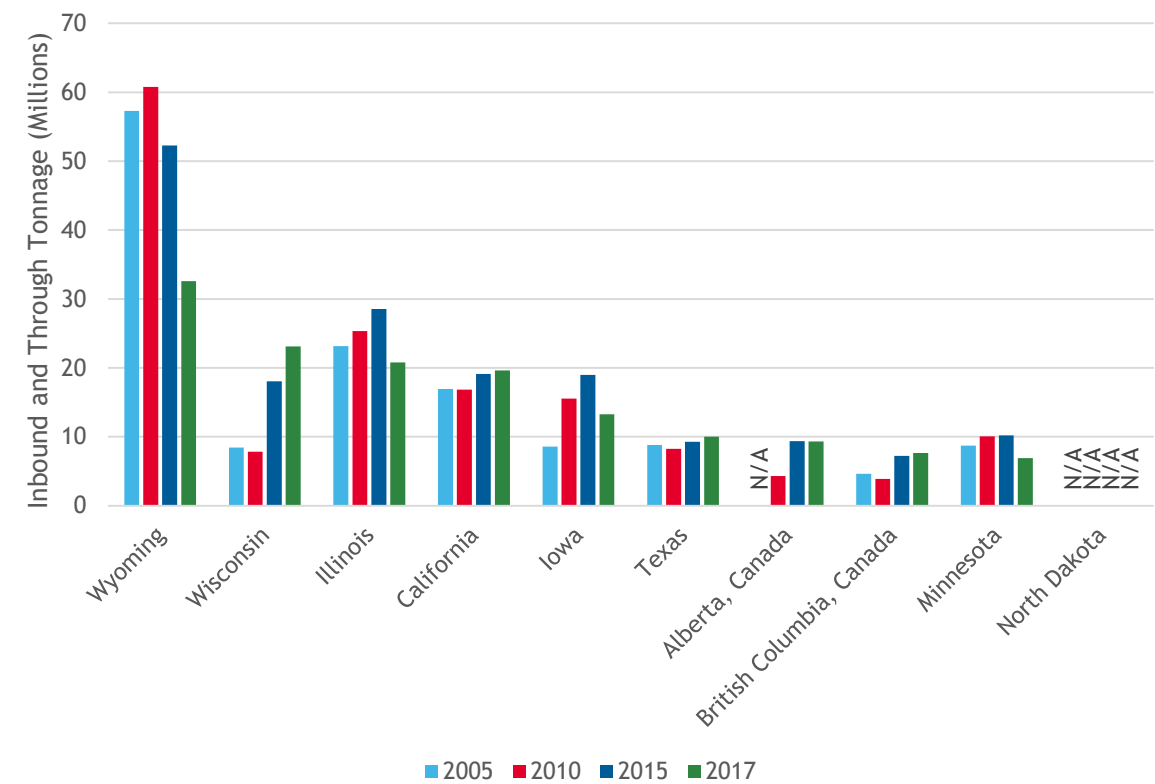
Source: Annual Carloads and Value, 2017 STB Confidential Waybill Sample.

WWW.CREATEPROGRAM.ORG

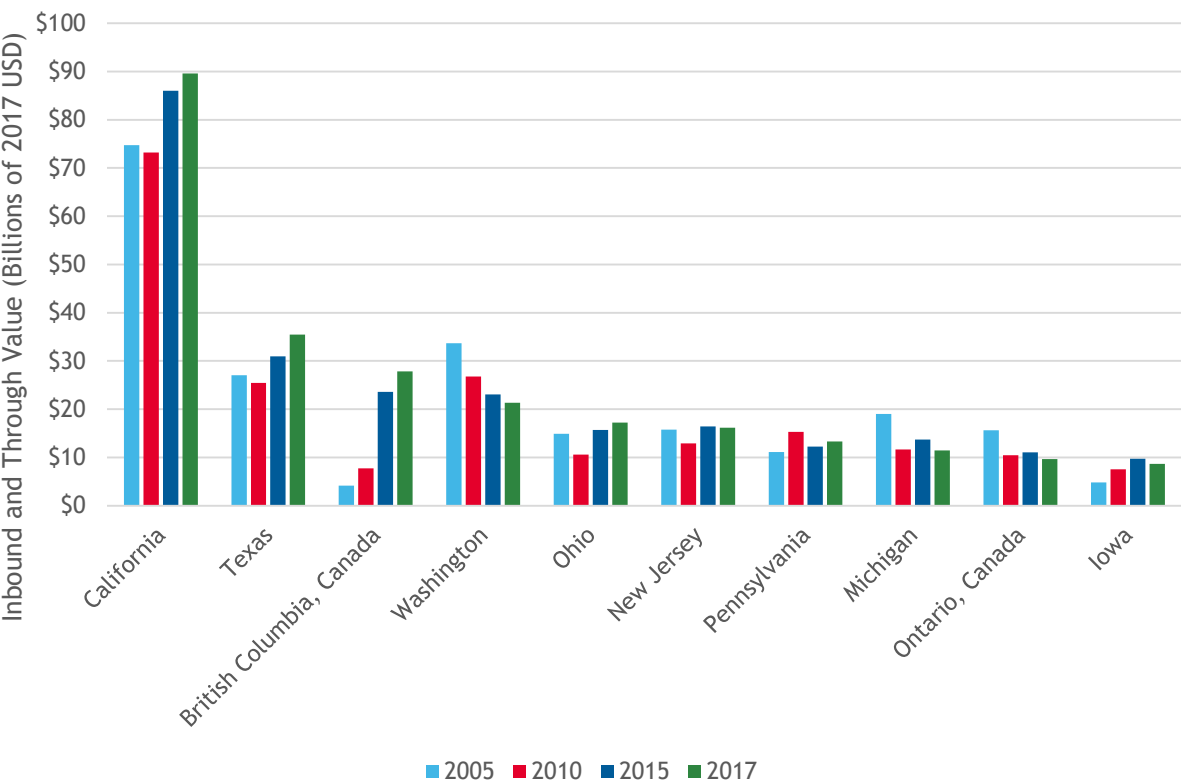
Chicago's Rail System is Critical for Trade



Top Ten States Originating Rail Traffic Through Chicago: Tonnage

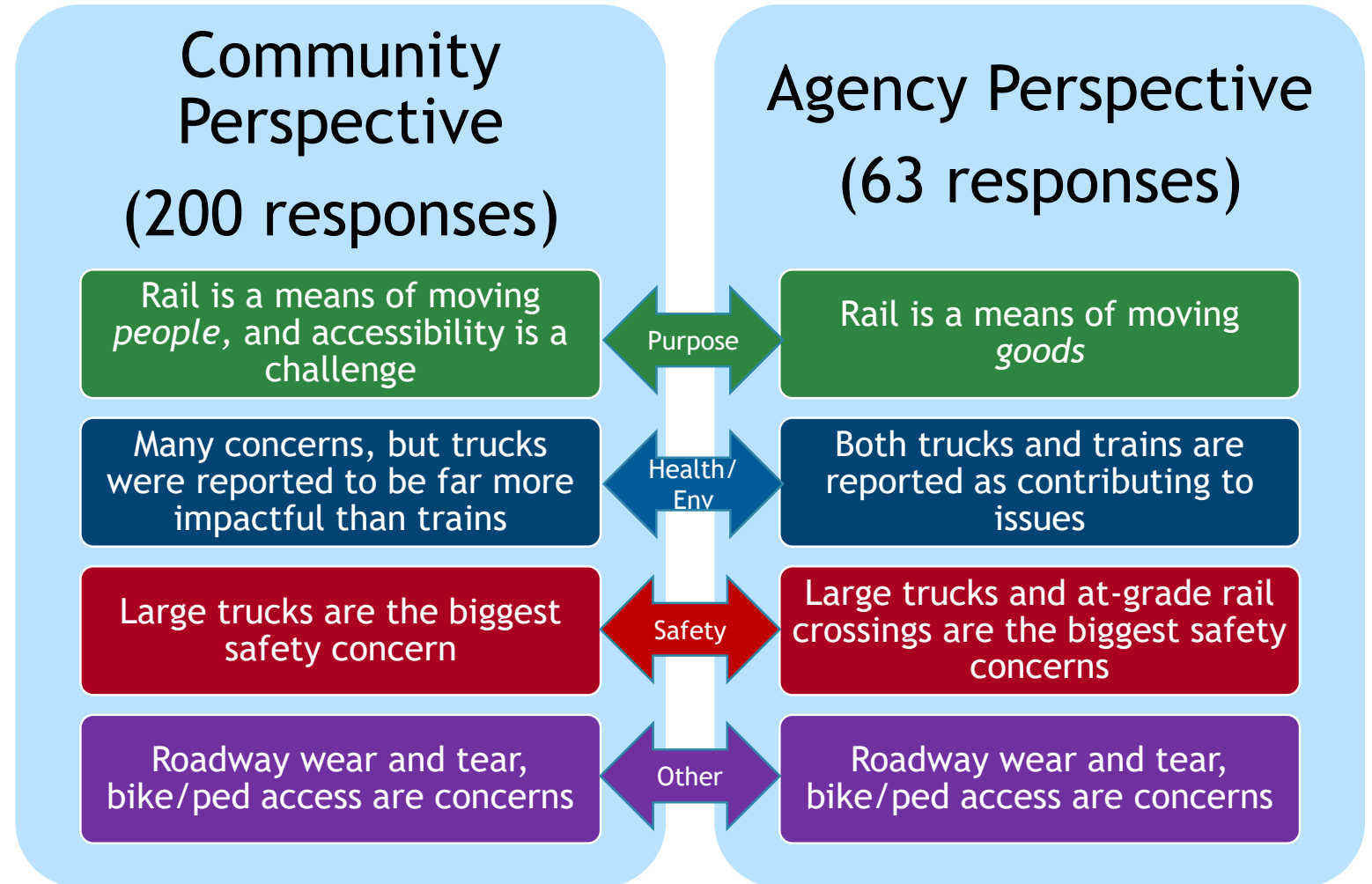


Top Ten States Originating Rail Traffic Through Chicago: Value



But Rail Also Has Significant Local & Equity Impacts

- Community Equity Survey
 - We asked a variety of questions about rail and freight impacts from local communities and organizations, and what this means for equity



Populations near Railyards



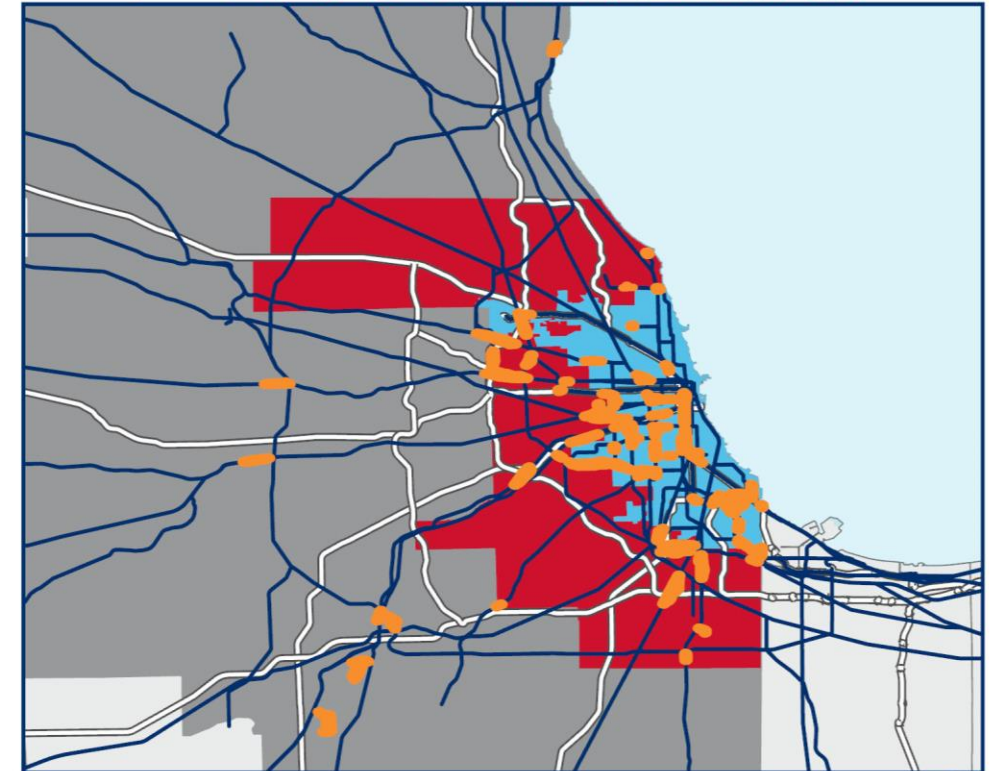
Demographics of Population Near Rail Yards, Organized by CMAP Geography



People who live below the poverty line, or are Hispanic or black are disproportionally represented within a half mile of railyards.



CHICAGO RAIL FUTURES STUDY II RAIL'S REGIONAL IMPACT



0 5 10 20 30 40 Miles



- 0.5 Mile Buffer Around Railyards
- City of Chicago
- North American Rail Lines
- Suburban Cook County
- Interstates
- CMAP Collar Counties

CRFII: Next Steps



- Continue Studying Rail/Equity Issues
 - Focus groups
 - White paper
- “State of the Rail System” White Paper
- Begin outreach to rail users and other businesses
- Continue to work with the railroads to understand rail performance, challenges, and what’s next for Chicago



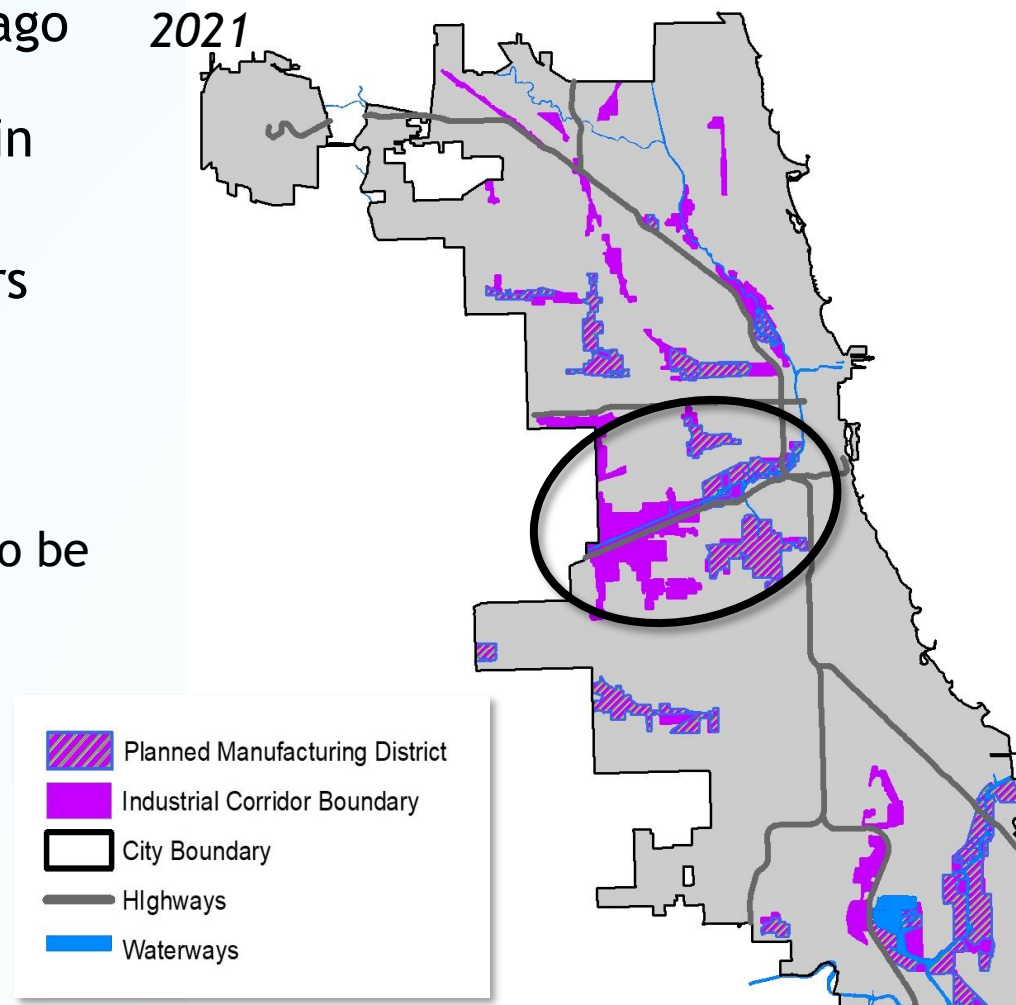
CHICAGO SOUTHWEST INDUSTRIAL CORRIDORS STUDY

Chicago Southwest Industrial Corridors (SWIC) Study Overview



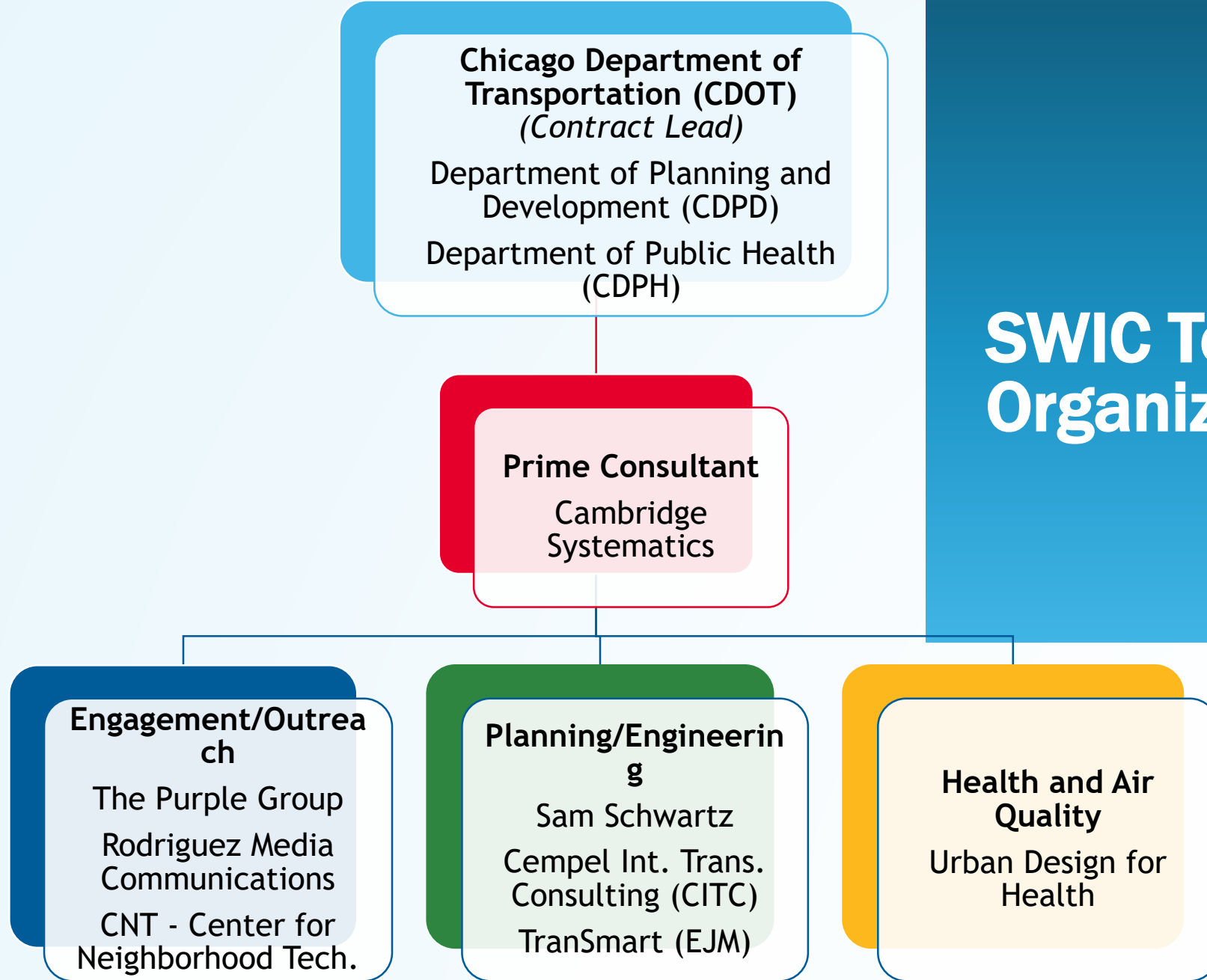
- ★ SWIC engages a team with broad skills to support Chicago DOT in understanding and addressing freight transportation and industrial development challenges in the Southwest Side of Chicago
- ★ Aligns with ongoing work by CDOT, DPD, DPH and others
- ★ Study objectives:
 - Understand challenges faced by communities by asking questions and using these answers to guide the study
 - Identify opportunities to address issues and who needs to be involved
 - Research and document information to support development of policies or other solutions
 - Recommend future actions

DPD Industrial Corridor Framework, 2021





SWIC Team Organization



SWIC Initial Steps



- ★ Hold one-on-one or focus group style meetings with key stakeholders, advocacy groups, and community representatives
- ★ Document and research issues
 - Develop community-driven “Matrix of Concerns”
- ★ Identify institutional responsibilities
 - Who has authority/responsibility in each concern area?
- ★ Define most critical issues and scope out further actions in each area
 - 31st St Corridor Study (Partnership with RTA)
 - Freight related health metrics
 - Additional stakeholder engagement

Categories of Community Concerns



Category	Example Community Concerns
Air Quality	<ul style="list-style-type: none">• Disproportionate burden of air pollutants in low-income and/or minority communities• Limitations of current data collection methods for air quality monitoring
Community Engagement	<ul style="list-style-type: none">• Community groups feel there is insufficient input into permitting and planning decision-making processes
Economic Development	<ul style="list-style-type: none">• TDL facilities are built without understanding / mitigating the impacts
Governance	<ul style="list-style-type: none">• Lack of enforcement mechanisms for addressing impacts that occur when actual results surpass estimated results (traffic, air pollution, etc.)
Land Use / Environment	<ul style="list-style-type: none">• Regulation/permitting process for noxious uses (asphalt plant)• Schools are built in industrial zones, exposing students to air pollution and safety risks from freight traffic
Truck Traffic	<ul style="list-style-type: none">• Noise pollution from heavy truck traffic• Truck queuing leads to truck traffic spillovers on residential roads, commercial streets
Other Transportation Needs	<ul style="list-style-type: none">• Lack of bike/ped infrastructure to reduce harm to peds/cyclists along roadways and at crossings

Organizations that Should be Involved



City of Chicago

Office of the Mayor

Chicago City Council

Assets, Information and Services (AIS)

Buildings (CDB)

Business Affairs and Consumer Protection (BACP)

Office of Emergency Management and Communications (OEMC)

Parks District (CPD)

Planning and Development (CDPD)

Police (CPD)

Public Schools (CPS)

Public Health (CDPH)

Transportation (CDOT)

Regional and State Agencies

Illinois General Assembly (IGA)

Chicago Metropolitan Agency for Planning (CMAP)

Cook County Board of Commissioners

Cook County Department of Transportation and Highways

Illinois Commerce Commission (ICC)

Illinois Department of Natural Resources (IDNR)

Illinois Department of Transportation (IDOT)

Illinois Environmental Protection Agency (IEPA)

Illinois State Police (ISP)

Metropolitan Water Reclamation District of Greater Chicago (MWRD)

Federal Agencies

Department of Transportation (USDOT)

Environmental Protection Agency (EPA)

Federal Highway Administration (FHWA)

Federal Motor Carrier Safety Administration (FMCSA)

Federal Railroad Administration (FRA)

Pipeline and Hazardous Materials Safety Administration (PHMSA)

Surface Transportation Board (STB)

Private/Non-Governmental

Chicago Transportation Coordination Office/ CREATE Program

Illinois Trucking Association (ITA)

Local Industrial Retention Initiatives (LIRIs)

Neighborhood Associations and Community Groups

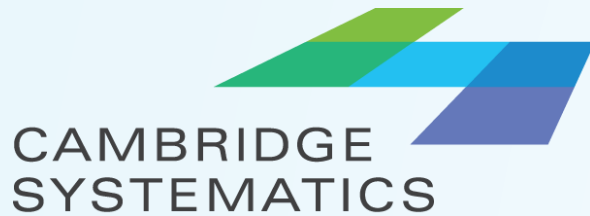
Other Environmental and Advocacy Groups

Study Contacts



Jeff Sriver
CDOT

jeffrey.sriver@cityofchicago.org



Elaine McKenzie
Cambridge Systematics
emckenzie@camsys.com