

---

---

---

---

---

---

---

---

### Red Line Livability Project

- Partnership between Developing Communities Project & CTA to highlight the improved quality of life and livability the Red Line Extension brings to the Roseland community and surrounding area
- Based on the 6 Livability Principles of HUD/DOT/EPA
  - Provide more transportation choices.
  - Promote equitable, affordable housing.
  - Enhance economic competitiveness.
  - Support existing communities.
  - Coordinate policies and leverage investment.
  - Value communities & neighborhoods.

---

---

---

---

---


---

---

---

### Quantitative Analysis

- Reduced Travel Time
- Increased Access to Amenities
  - Community Services
  - Educational Institutions
  - Entertainment
  - Grocery Stores
  - Jobs
  - Medical Care
  - Open Space
  - Retail



---

---

---

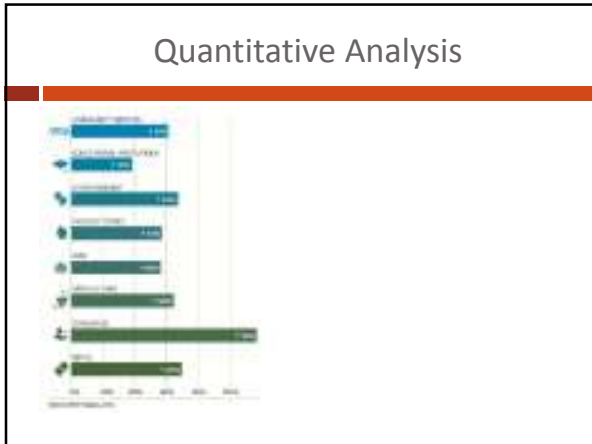
---

---

---

---

---




---

---

---

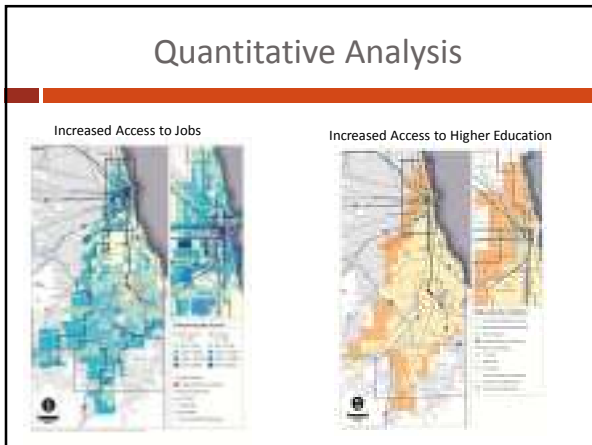
---

---

---

---

---




---

---

---

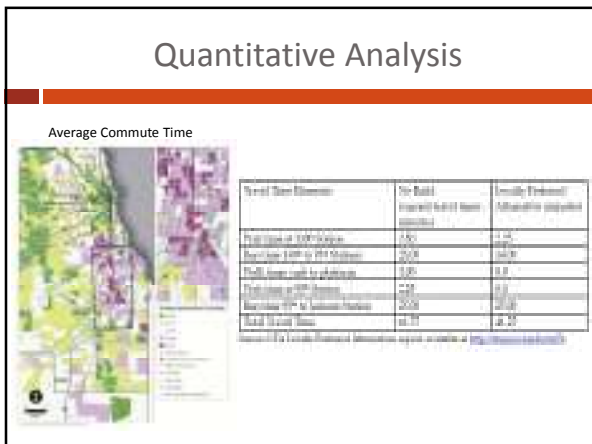
---

---

---

---

---




---

---

---

---

---

---

---

---

### Qualitative Analysis

---

- Partnership with Loyola University Chicago Center for Urban Research & Learning (CURL), DCP & CMAP
  
- Conducted 12 focus groups with Roseland residents & stakeholders in the following categories
  - block clubs
  - business owners
  - child care providers
  - church members
  - disabled individuals
  - educators/education advocates
  - environmental activists
  - homeowners
  - medical community
  - public housing residents
  - seniors
  - workforce development groups

---

---

---

---

---

---

---

---

### Final Deliverables

---

- Technical Report
  
- Brochure
  
- Red Line Video
  
- [www.cmap.illinois.gov/red-line](http://www.cmap.illinois.gov/red-line)  
\*will show website & video

---

---

---

---

---

---

---

---