



# Council of Mayors Executive Committee

**October 19, 2021**

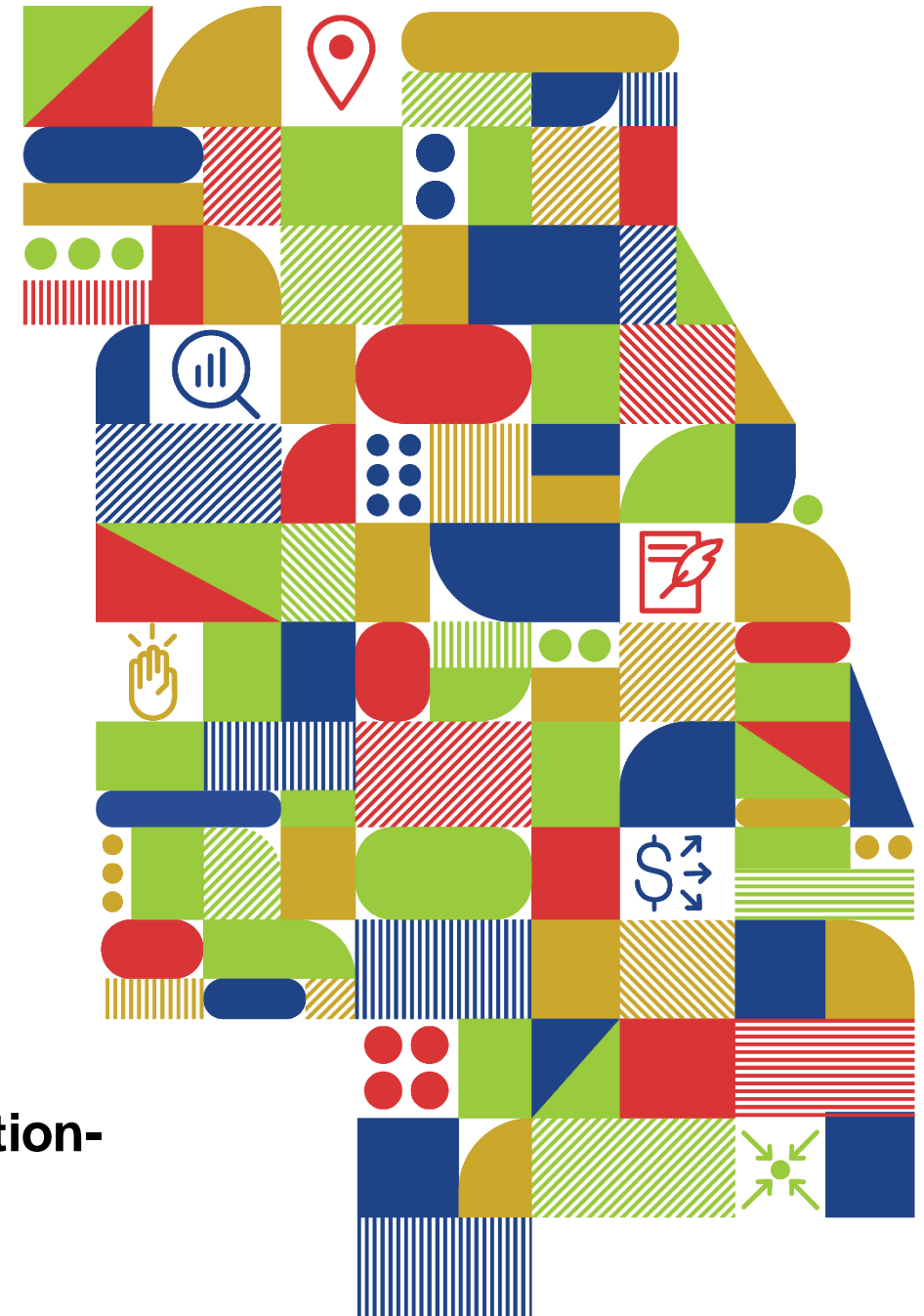
**Meeting will start at 9:30am**

**To mute/unmute your phone use \*6**

**Use the Chat Box for questions (staff are monitoring)**

**Use your full name for the login**

**Only Committee members participate in the conversation-  
except during the public comment agenda item**



# 1.0 Call to order/introductions

## Chair Schielke

Staff will read the names of committee members that are logged-in and will then ask committee members that were missed or on the phone to introduce themselves

*To mute/unmute your phone use \*6*

# 2.0 Agenda changes and announcements

**Chair Schielke**

Please mute your conference line or phone line (\*6 for phone connections) when not speaking.

To ask a question, please use the chat box.

When making a motion, please state your name.

# 3.0 Approval of minutes

**Chair Schielke**

Draft Minutes from July 20, 2021

**ACTION REQUESTED: Approval**

***Committee Members: Remember to unmute (\*6) your line and state your name when making a motion.***

# 4.0 CMAP update

## CMAP leadership

CMAP leadership will provide an update on recent actions taken by the agency.

**ACTION REQUESTED: Information**

# 5.0 STP Project Selection Committee update

**Kama Dobbs**

Staff will provide an update on activities of the STP Project Selection Committee.

**ACTION REQUESTED: Information**

# 6.0 IDOT update

## Russel Pietrowiak

Staff will provide an update on the IDOT Bureau of Local Roads.

**ACTION REQUESTED: Information**

# 7.0 Unified Work Plan

**Lenny Cannata**

Staff will provide an overview of the Planning Liaison program and ask for committee approval of the FY 2023 funding proposal.

**ACTION REQUESTED: Approval**



# 8.0 2020 Census Results

**Elizabeth Ginsberg**

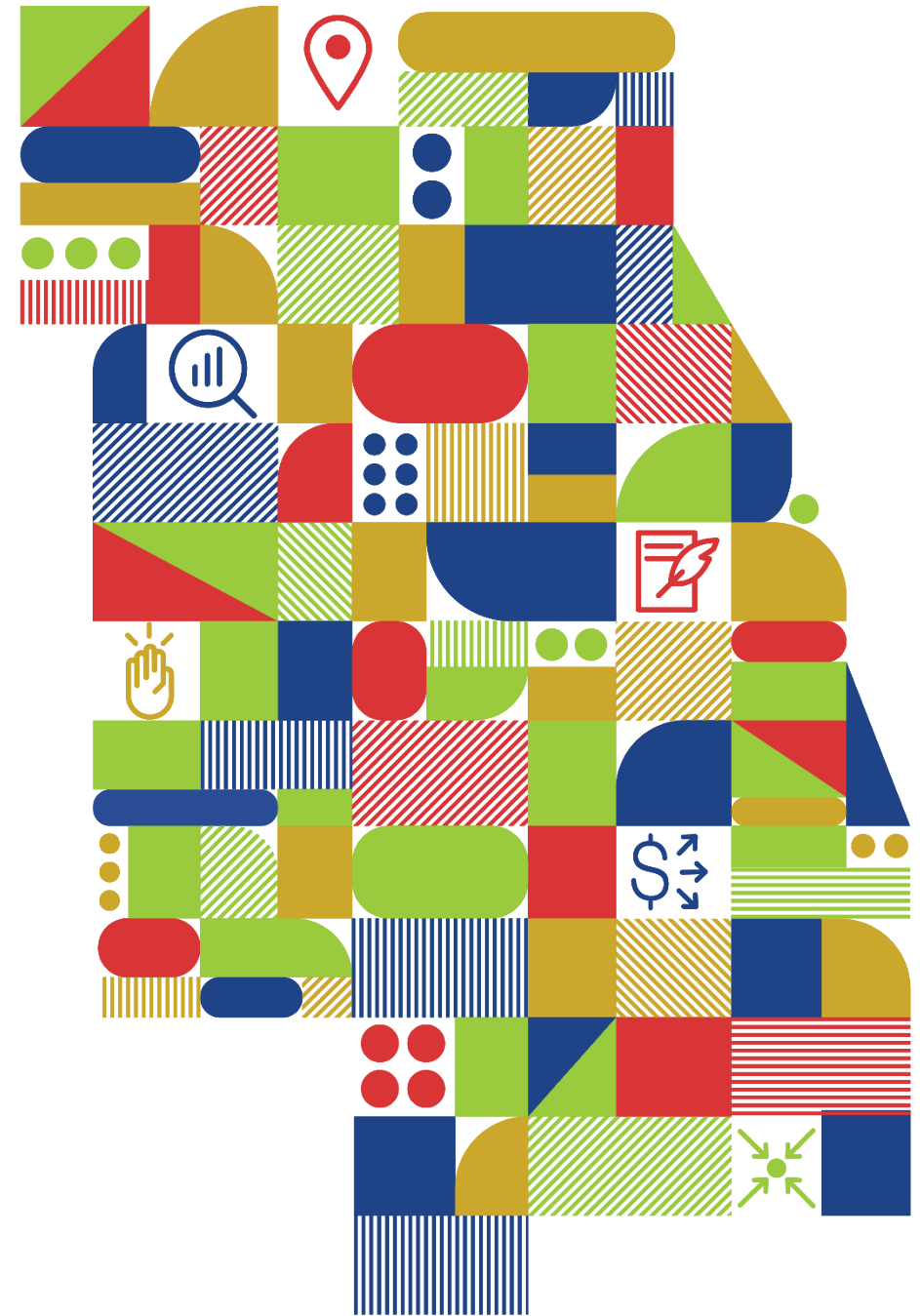
Staff will discuss the preliminary results of the 2020 Census and review the timeline for future data releases.

**ACTION REQUESTED: Information**



# 2020 Decennial Census Update

October 19, 2021



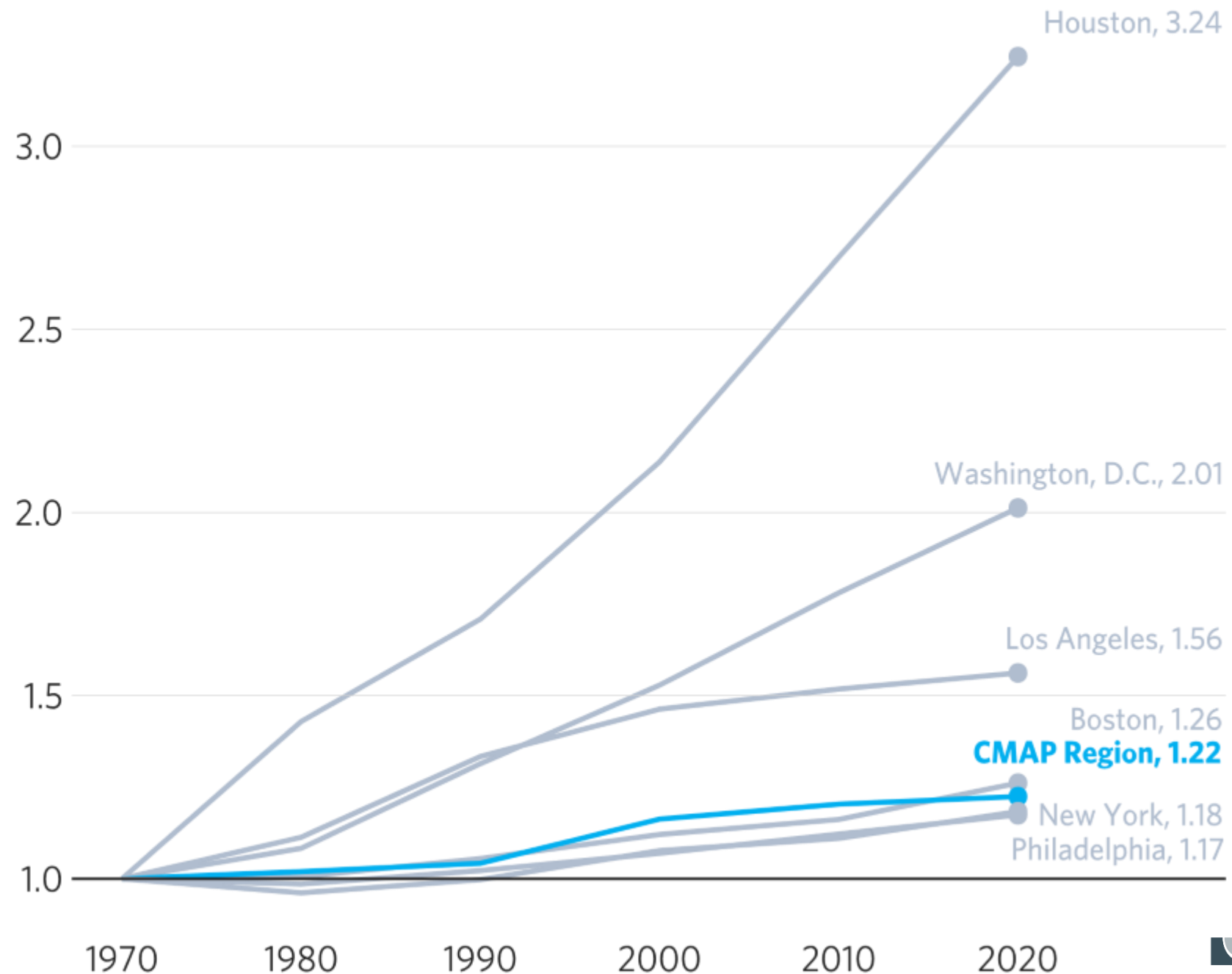
# 2020 Census reveals region's growth and diversity

Northeastern Illinois grew by 1.7 percent or 146,000 residents

All seven counties experienced population growth

Intraregional shifts varied geographically and by race and ethnicity

# Population growth in select metropolitan regions indexed to 1970, 1970 to 2020



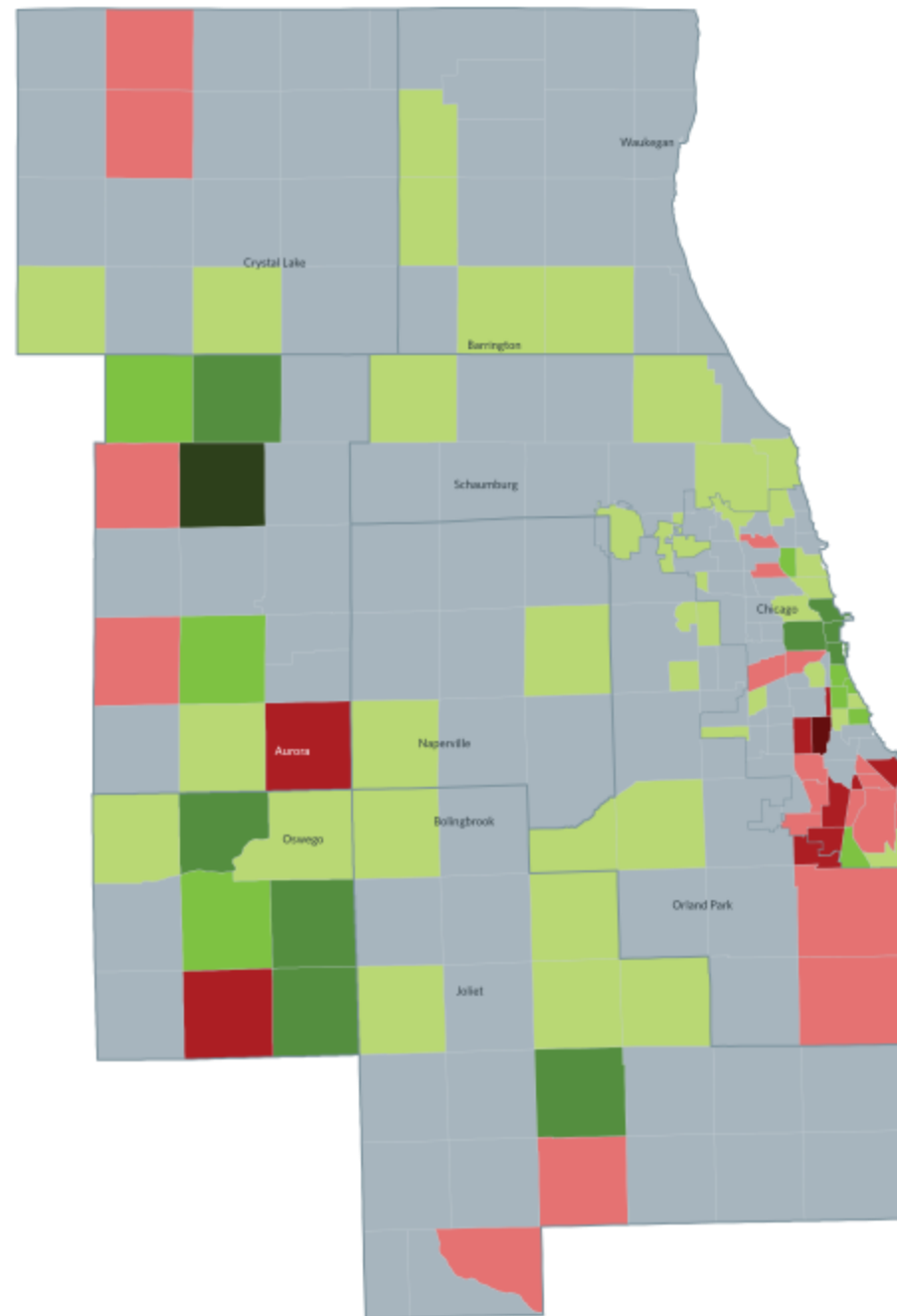
Source: Chicago Metropolitan Agency for Planning analysis of U.S. Decennial Census data 1970, 1980, 1990, 2000, 2010 and 2020

## Percentage point change in total population, 2010 to 2020

Note: 2020 Total Population: 8,577,735.

Source: Chicago Metropolitan Agency for Planning analysis of U.S. Decennial Census data 2010 and 2020

- Loss of 20% or more
- Loss of 10% to 19.99%
- Loss of 5% to 9.99%
- Loss / Gain of 0% to 4.99%
- Gain of 5% to 9.99%
- Gain of 10% to 19.99%
- Gain of 20% to 49.99%
- Gain of 50% or more

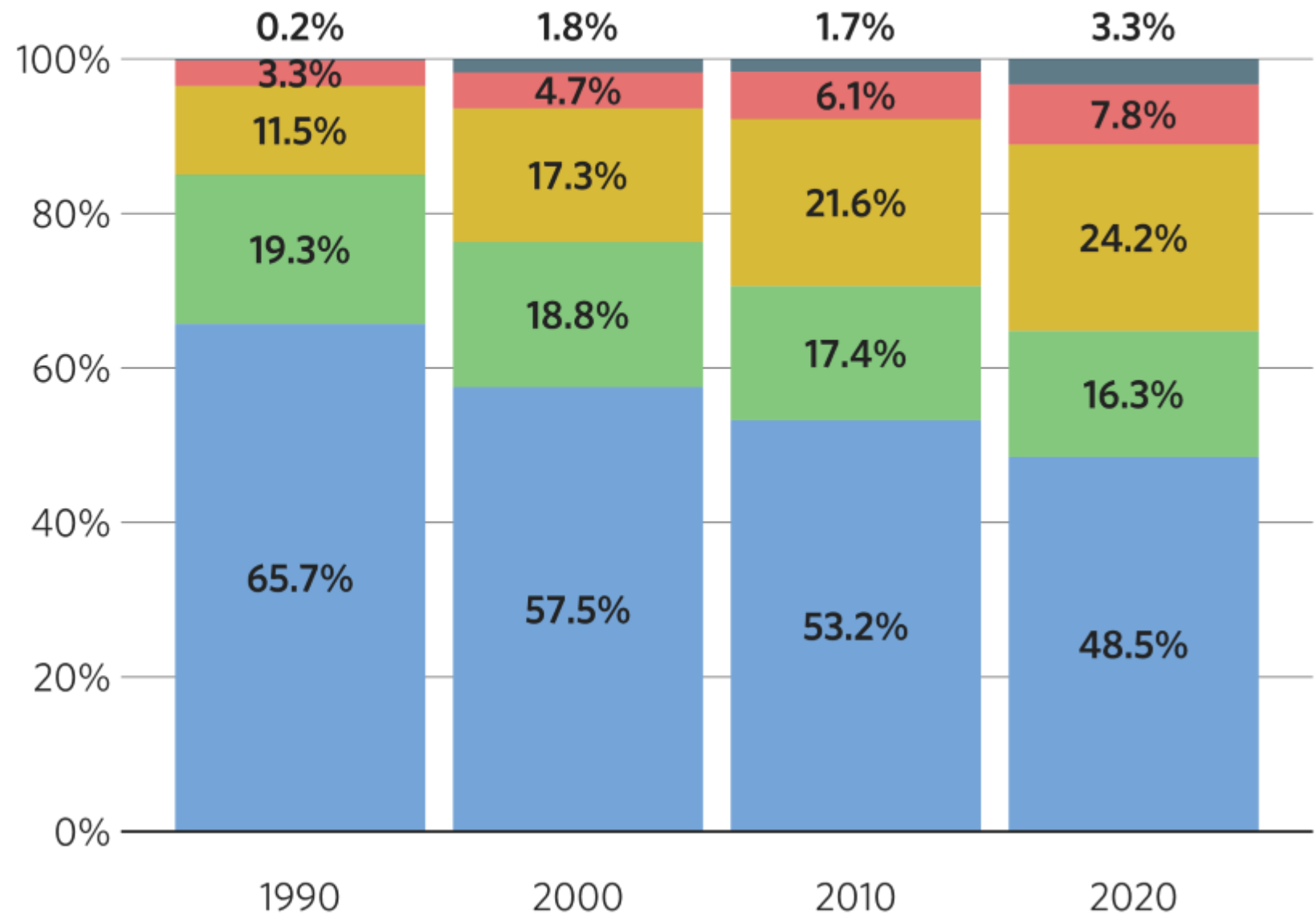


**Increased  
diversity across  
the region**



# Population by race in the CMAP Region, 1990 to 2020

- White
- Black
- Hispanic
- Asian, Hawaiian, and other Pacific Islander
- Other (including two or more races)



Source: Chicago Metropolitan Agency for Planning analysis of U.S. Decennial Census data 1990, 2000, 2010 and 2020





# Next Steps



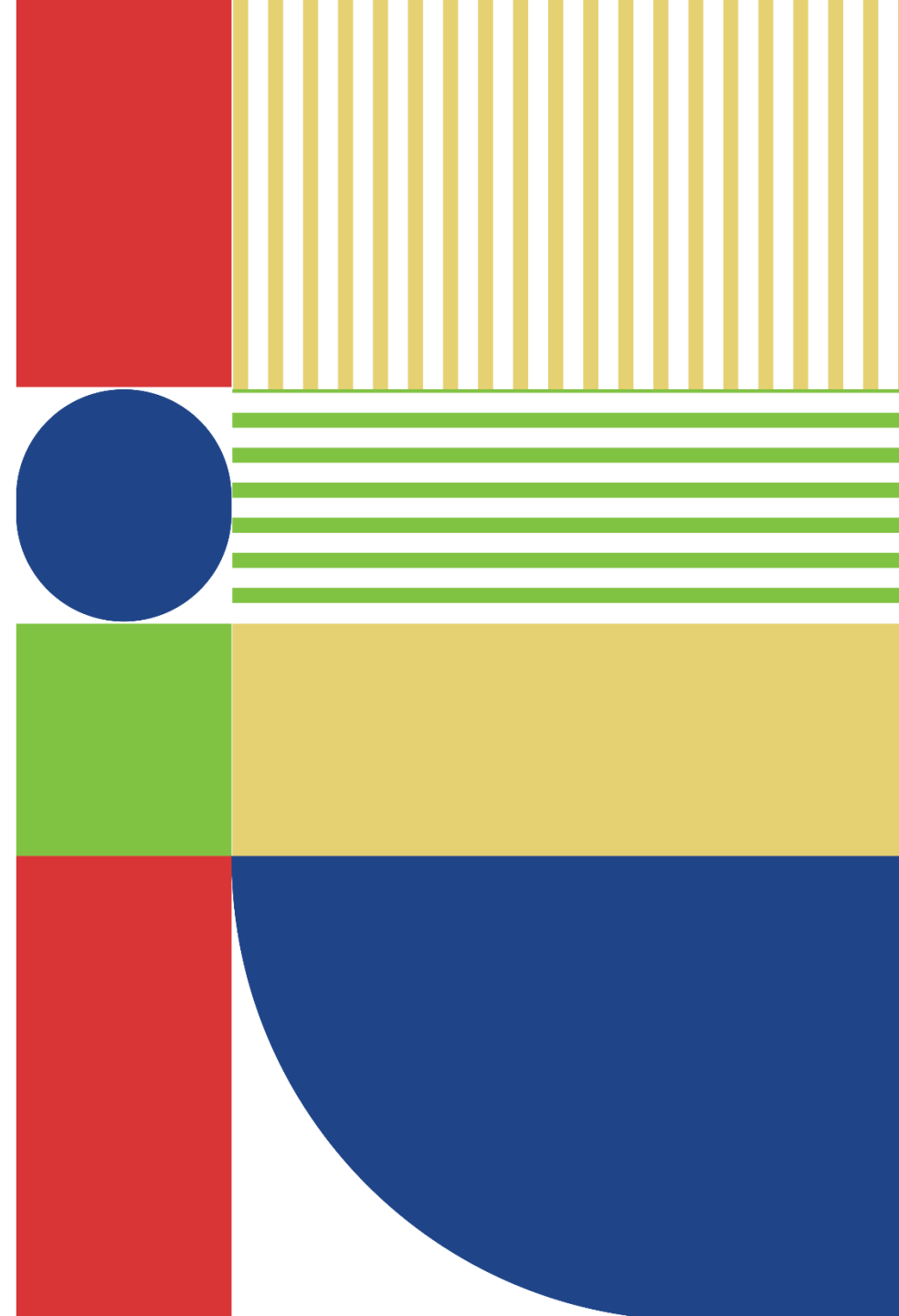
# Next Steps

2020 Census Update will be published in an upcoming CMAP Weekly Update

CMAP will continue to analyze data as it is released by the Census Bureau



**Elizabeth Ginsberg**  
**[eginsberg@cmmap.Illinois.gov](mailto:eginsberg@cmmap.Illinois.gov)**



# 9.0 Community Data Snapshots, 2020 update

**Avery Goods**

Staff will present the new Community Data Snapshots.

**ACTION REQUESTED: Information**



# Community Data Snapshots

August 2021 Release: 2020 Census Updates

October 19<sup>th</sup> 2021



# Current Snapshot Content

Population demographics

Housing

Transportation

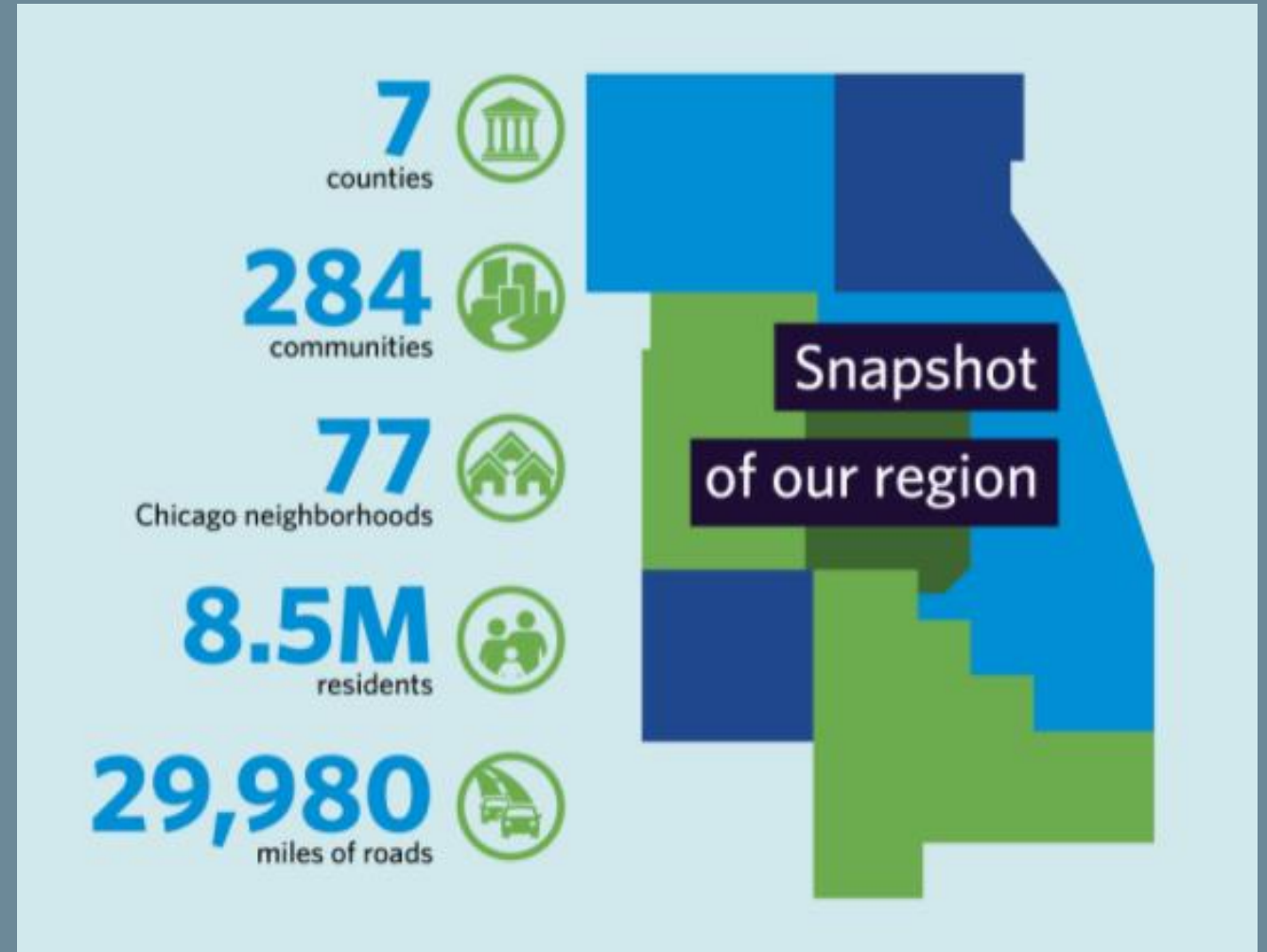
Employment

Land use

Retail sales

Water supply

ON TO 2050 indicators



## Household Size, 2015-2019

	Cook County		CMAP Region	
	Count	Percent	Count	Percent
<b>1-Person Household</b>	647,474	32.8	907,247	29.0
<b>2-Person Household</b>	594,519	30.1	962,910	30.8
<b>3-Person Household</b>	293,712	14.9	487,229	15.6
<b>4-or-More-Person Household</b>	436,403	22.1	765,944	24.5

Source: 2015-2019 American Community Survey five-year estimates.

Universe: Occupied housing units

## Household Type, 2015-2019

	Cook County		CMAP Region	
	Count	Percent	Count	Percent
<b>Family</b>	1,183,272	60.0	2,020,927	64.7
Single Parent with Child	170,209	8.6	255,505	8.2
<b>Non-Family</b>	788,836	40.0	1,102,403	35.3

Source: 2015-2019 American Community Survey five-year estimates.

Universe: Occupied housing units

# Snapshot PDF Updates

## General Population Characteristics, 2020

	Cook County	CMAP Region
<b>Total Population</b>	5,275,541	8,577,735
<b>Total Households</b>	2,086,940	3,266,741
<b>Average Household Size</b>	2.5	2.6
<b>Percent Population Change, 2010-20</b>	1.6	1.7
<b>Percent Population Change, 2000-20</b>	-1.9	5.3

Source: 2000, 2010 and 2020 Census.



# 2020 Census Updates (Raw Data)

## General Population Characteristics

Total population

Population living in a household

Population living in group quarters

Race/Ethnicity

Asian, Black, Hispanic, White, Other

Total housing units

Total households

Vacant housing units

Household size

	A	B	C	D	E	F	G	H	I	J	K	L	M	N
1	GEOID	GEOG	TOT_POP	POP_HH	POP_GQ	HISP	WHITE	BLACK	ASIAN	OTHER	HU_TOT	TOT_HH	VAC_HU	HH_SIZE
2	1700243	Addison	35702	35621	81	16285	14710	1166	2867	674	12682	12296	386	2.896958
3	1700685	Algonquin	29700	29695	5	3359	22327	704	2143	1167	11107	10769	338	2.757452
4	1701010	Alsip	19063	18987	76	5056	8895	4235	359	518	8016	7692	324	2.468409
5	1701595	Antioch	14622	14621	1	1621	11328	426	485	762	5479	5265	214	2.777018
6	1702154	Arlington H	77676	76923	753	5388	60333	1195	8323	2437	33356	31782	1574	2.420332
7	1703012	Aurora	180542	178870	1672	74981	61017	18930	19659	5955	62763	60103	2660	2.976058
8	1703610	Bannockbu	1013	787	226	45	667	82	168	51	349	303	46	2.59736
9	1703844	Barrington	10722	10486	236	651	8926	117	643	385	4394	4102	292	2.556314
10	1703883	Barrington	4114	4113	1	212	3369	39	348	146	1651	1466	185	2.805593
11	1704013	Bartlett	41105	40744	361	4947	26377	995	7345	1441	14522	14199	323	2.869498
12	1704078	Batavia	26098	26024	74	2394	21479	608	583	1034	10381	9970	411	2.610231
13	1704303	Beach Parl	14249	14232	17	5812	5456	1605	798	578	5179	4964	215	2.867043
14	1704572	Bedford Pa	602	596	6	222	332	15	10	23	213	208	5	2.865385
15	1704585	Beecher	4713	4599	114	440	3914	174	45	140	1768	1699	69	2.706886
16	1704975	Bellwood	18789	18692	97	5034	545	12705	119	386	6757	6351	406	2.943159
17	1705248	Bensenville	18813	18452	361	9698	7065	735	921	394	6864	6538	326	2.82227
18	1705404	Berkeley	5338	5305	33	2008	1242	1718	219	151	1933	1853	80	2.862925
19	1705573	Berwyn	57250	57079	171	36726	13372	4622	1365	1165	21037	19633	1404	2.907299
20	1705976	Big Rock	1104	1104	0	74	984	3	5	38	430	409	21	2.699267
21	1706587	Bloomingsd	22382	21733	649	2750	14747	791	3392	702	9301	8903	398	2.441087
22	1706704	Blue Island	22558	22503	55	11720	3442	6817	86	493	9137	8278	859	2.71841

# Where to access the data

CMAP Data Hub (Raw Data CSVs)

[https://datahub.cmap.illinois.gov/dataset/  
community-data-snapshots-raw-data](https://datahub.cmap.illinois.gov/dataset/community-data-snapshots-raw-data)

CMAP Website (PDFs)

[https://www.cmap.illinois.gov/data/comm  
unity-snapshots](https://www.cmap.illinois.gov/data/community-snapshots)

# Thank you!

Please send suggestions to:

Avery Goods  
[agoods@cmap.illinois.gov](mailto:agoods@cmap.illinois.gov)

# 10.0 Regional Socioeconomic Forecast

**David Clark**

Staff will provide an overview of the process and assumptions behind the upcoming regional forecast.

**ACTION REQUESTED: Information**

# Introduction

# Why we forecast

“The MPO shall ... confirm the transportation plan's validity and consistency with current and forecasted transportation and land use conditions ... to at least a 20-year planning horizon.” \*

# How we forecast

## Regional:

Demographic: population and households using accepted demographic practices

Economic: employment by sector (e.g. retail, manufacturing) using third-party econometric model

## Local:

Allocate regional forecast to the local level based on capacity, accessibility, policy, etc.



# Approach for the Plan Update

## **Demographic forecast:**

Cohort-component model developed in consultation with Applied Population Lab (UW-Madison)

## **Employment forecast:**

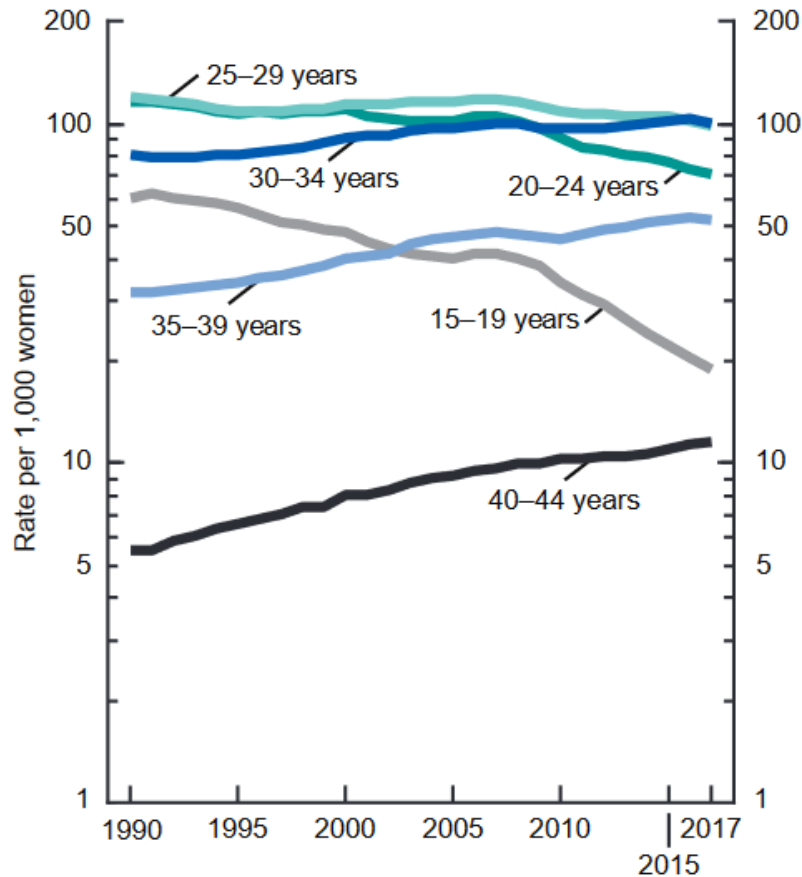
Consultant-led (EBP & Moody's Analytics)

## **Local allocation:**

UrbanSim land use model

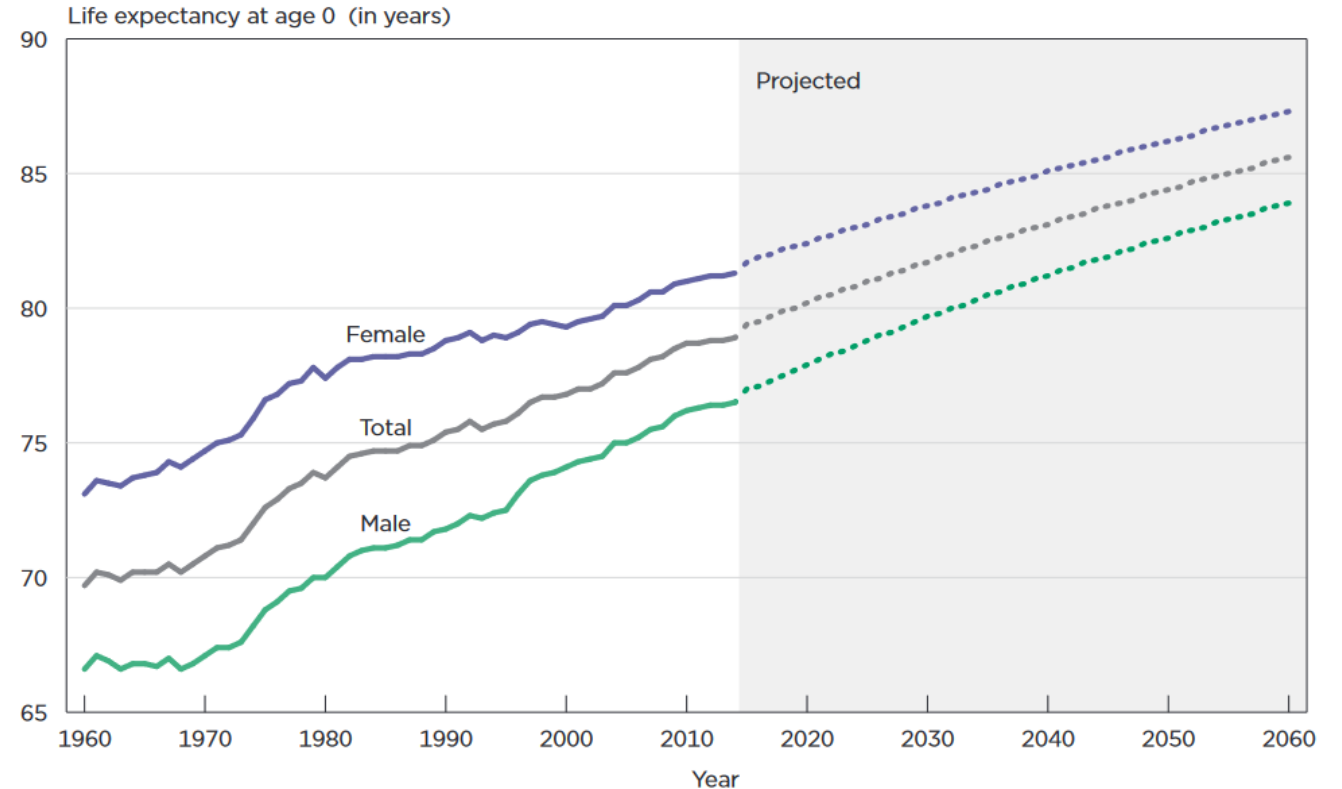
# Draft Regional Forecast

# Assumptions: fertility & mortality



NOTE: Rates are plotted on a logarithmic scale.  
SOURCE: NCHS, National Vital Statistics System, Natality.

Figure 1.  
**Historical and Projected Life Expectancy for the Total U.S. Population at Birth: 1960-2060**

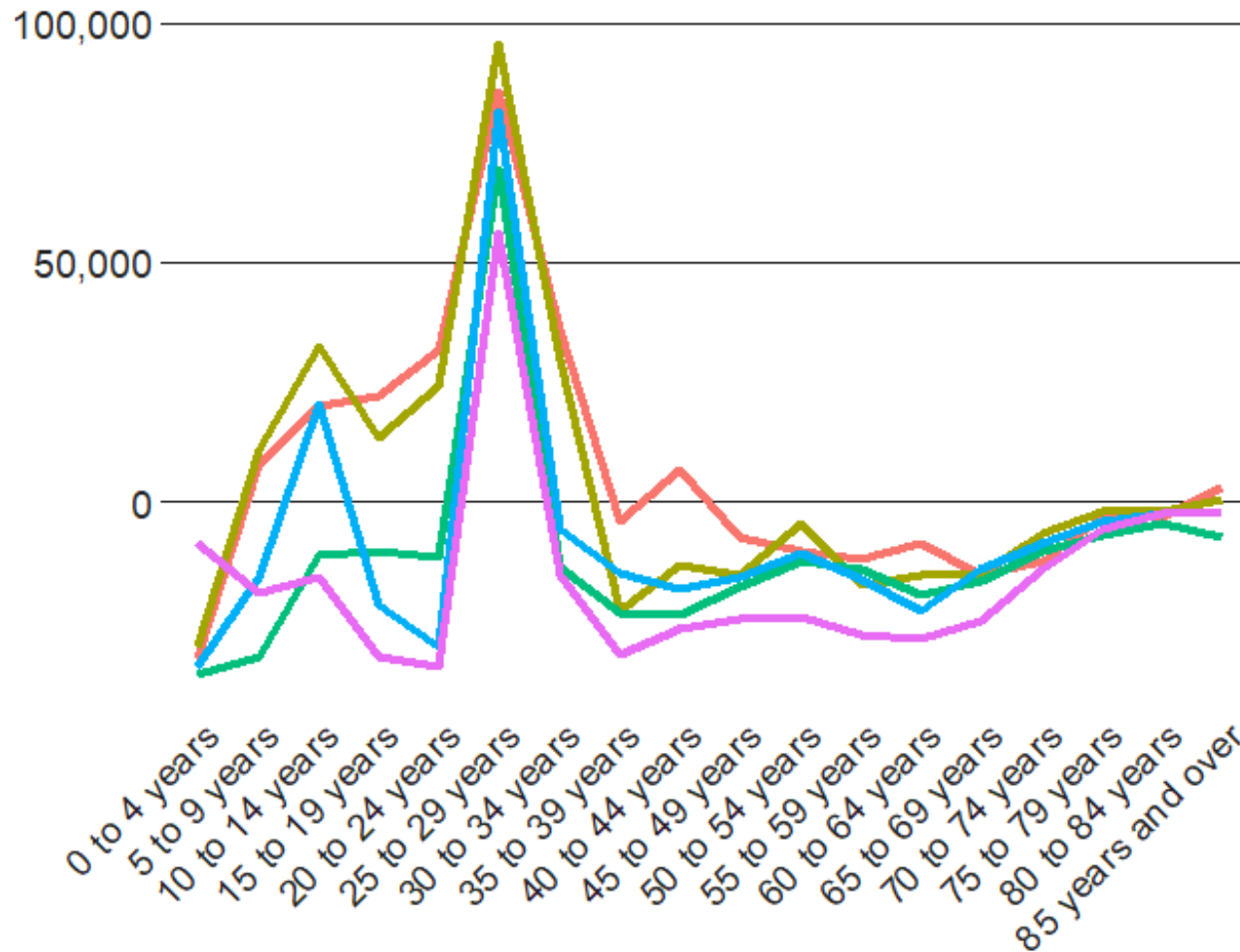


Sources: U.S. Census Bureau, 2017 National Population Projections, 2015-2060, and National Center for Health Statistics Life Tables, 1960-2014, <[www.cdc.gov/nchs/data/nvsr/nvsr68/nvsr68\\_07-508.pdf](http://www.cdc.gov/nchs/data/nvsr/nvsr68/nvsr68_07-508.pdf)>.

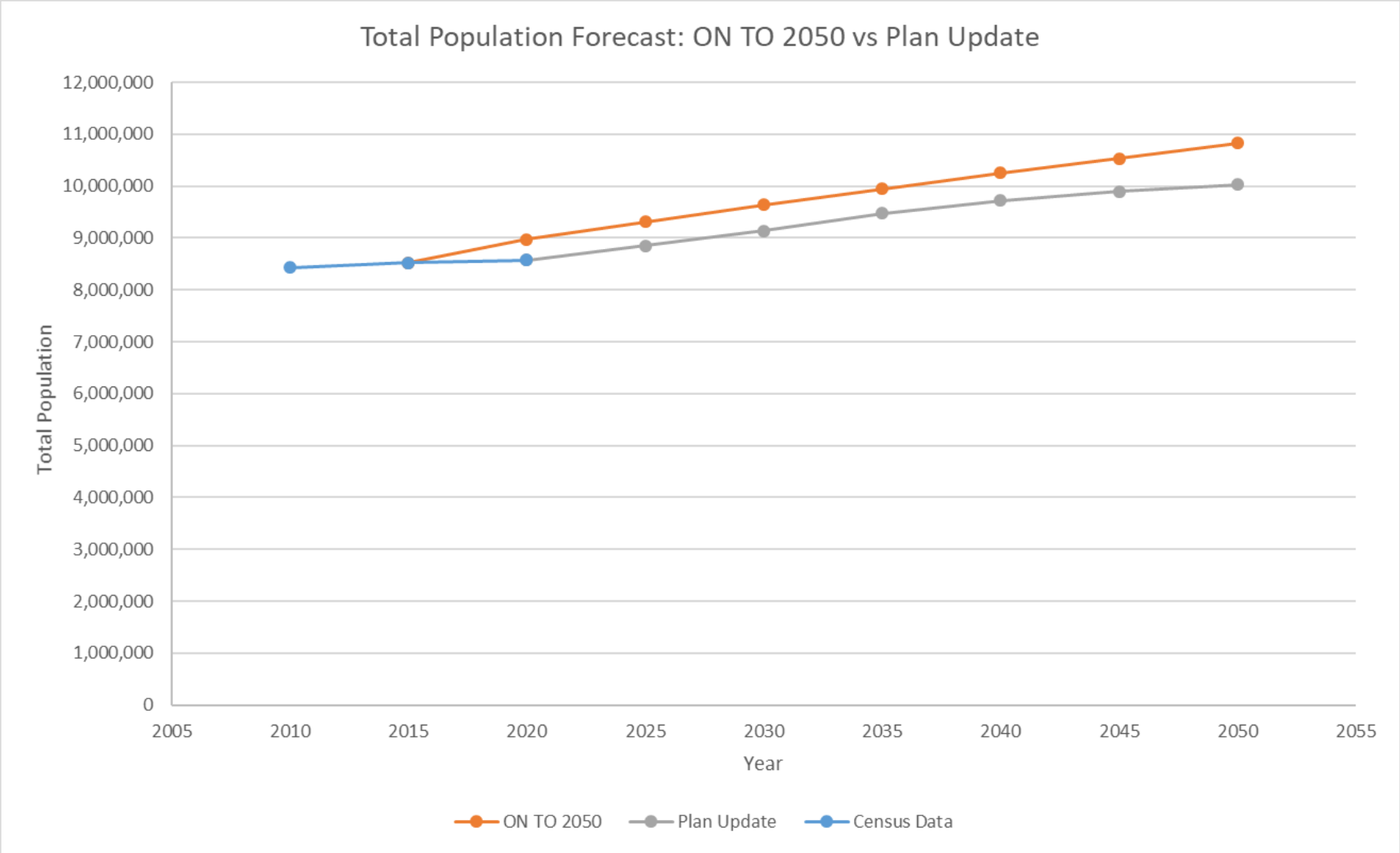
# Assumptions: migration

Estimated Net Migration, CMAP Region

— 1991-1995 — 1995-2000 — 2001-2005 — 2006-2010 — 2014-2018



# Population forecast (draft)

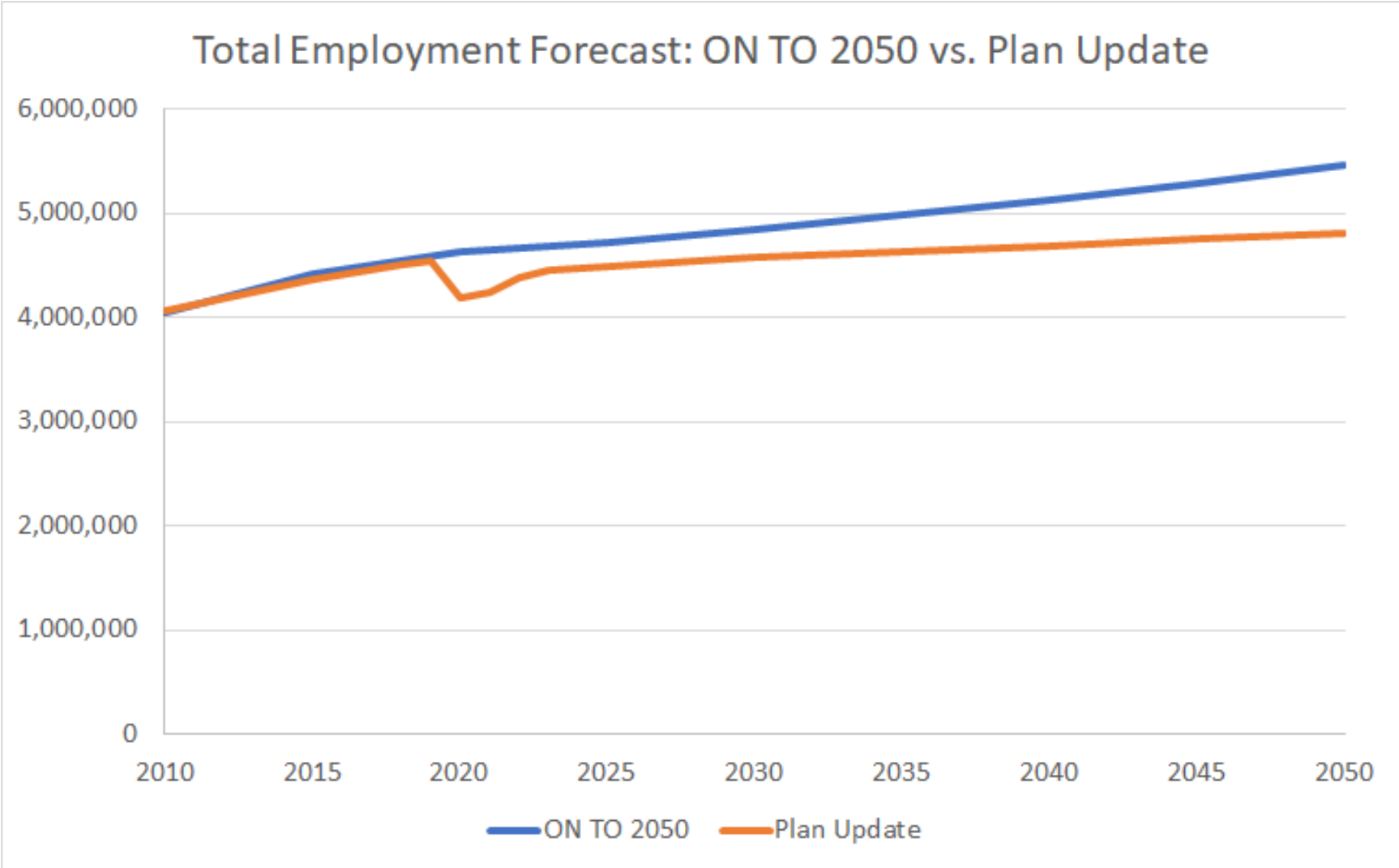


# Assumptions: national employment

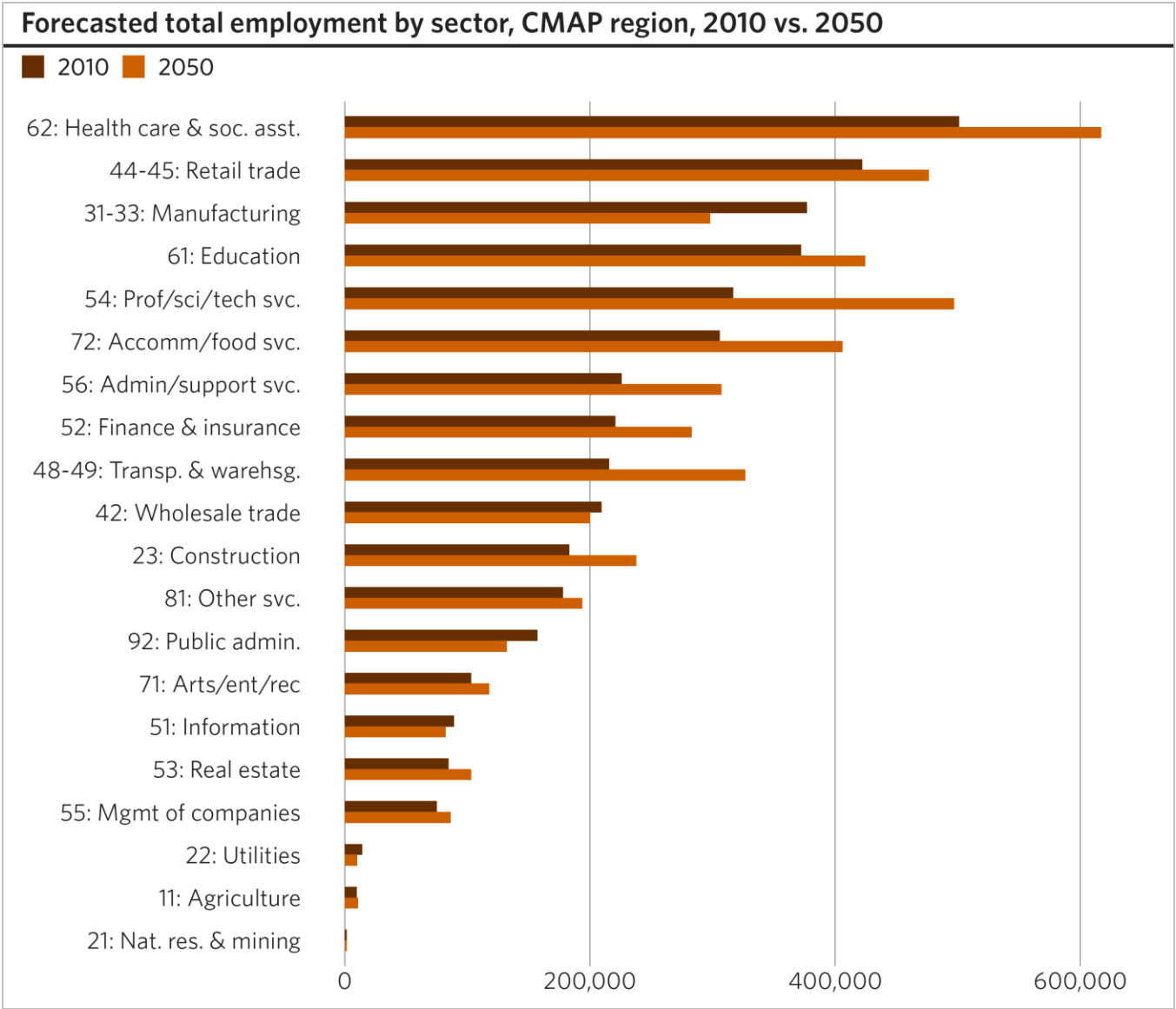
## U.S. MACRO BASELINE FORECAST SUMMARY

	Units	21Q2	21Q3	21Q4	22Q1	2021	2022	2023	2024	2025
Gross Domestic Product	bcw\$	19,574.7	19,866.7	20,184.0	20,437.9	19,678.2	20,625.9	21,114.7	21,722.0	22,271.6
<i>Change</i>	%AR	10.6	6.1	6.5	5.1	6.8	4.8	2.4	2.9	2.5
Federal Budget	\$ bil	-890.4	-703.6	-432.3	-555.2	-3,159.6	-1,789.2	-1,775.2	-1,430.8	-1,375.3
Total Employment	mil	144.9	146.9	148.7	150.0	145.9	151.4	153.9	155.1	155.7
<i>Change</i>	%AR	4.3	5.6	5.0	3.7	2.6	3.7	1.7	0.8	0.4
Unemployment Rate	%	5.9	5.2	4.5	4.0	5.4	3.7	3.5	3.6	4.0
Light Vehicle Sales	mil, SAAR	17.6	17.0	17.5	17.7	17.2	17.7	17.5	17.0	16.9
Residential Housing Starts	mil, SAAR	1.75	1.77	1.80	1.86	1.73	1.90	1.97	1.98	1.93
Median Existing-Home Price	\$ ths	350.0	348.5	347.1	345.6	344.7	346.2	354.1	363.0	372.3
<i>Change</i>	%YA	24.6	13.8	8.0	3.7	15.3	0.4	2.3	2.5	2.6
Consumer Price Index	%AR	2.5	2.8	2.6	2.3	2.7	2.4	2.3	2.3	2.3
Federal Funds Rate	%	0.1	0.1	0.1	0.1	0.1	0.1	0.5	1.5	2.4
Treasury Yield: 10-Yr Bond	%	1.69	1.88	2.05	2.19	1.74	2.30	2.77	3.37	3.73
Baa Corp. - 10-Yr Treasury	DIFF	2.0	2.1	2.3	2.4	2.1	2.5	2.6	2.6	2.5
Corporate Profits With IVA & CCA	\$ bil	2,376.3	2,341.4	2,334.5	2,357.2	2,356.1	2,422.3	2,575.5	2,666.4	2,784.3
<i>Change</i>	%YA	30.1	0.7	1.8	-0.6	11.1	2.8	6.3	3.5	4.4
S&P 500	1941=10	4,104.5	4,074.0	4,010.4	3,954.9	4,012.8	3,869.8	3,764.1	3,836.7	4,059.1
<i>Change</i>	%YA	40.1	22.7	12.8	2.4	24.7	-3.6	-2.7	1.9	5.8
CRE Price Index	index	292.4	289.4	286.4	287.7	286.4	302.9	329.7	353.1	364.0
NCREIF Property Index: Rate of Return	%, NSA	2.5	3.0	2.8	3.7	2.5	2.6	2.1	2.8	2.6
C&I Loans Outstanding	\$ bil	2613.5	2653.7	2769.0	2959.8	2658.2	3147.7	3473.7	3645.3	3809.9
BAA spread	%	2.0	2.1	2.3	2.4	2.1	2.5	2.6	2.6	2.5

# Employment forecast (draft)



# Employment by sector (draft)





# Timeline & deliverables

## Early December:

Final regional  
forecast

Draft local  
forecasts

## Late March 2022:

Final local  
forecasts

	Region	Local
<b>Population</b>		
Total Population	X	
Households & HH Population	X	X
Race/Ethnicity Distribution	X	
Age/Sex Distribution	X	
<b>Employment</b>		
Total Employment by Sector	X	
Wage & Salary Employment by Sector	X	X

# Questions?

**Thank you**

**David Clark**

[dcclark@cmap.illinois.gov](mailto:dcclark@cmap.illinois.gov)

**Alexis McAdams**

[amcadams@cmap.illinois.gov](mailto:amcadams@cmap.illinois.gov)

**Noel Peterson**

[npeterson@cmap.illinois.gov](mailto:npeterson@cmap.illinois.gov)

**Mary Weber**

[mweber@cmap.illinois.gov](mailto:mweber@cmap.illinois.gov)

# 11.0 LTA Call for Projects

**CMAP staff**

Staff will provide an overview of the upcoming LTA call for projects.

**ACTION REQUESTED: Information**

# 2022 CALL FOR PROJECTS



Chicago Metropolitan  
Agency for Planning



Regional  
Transportation  
Authority

# CMAP Call for Projects Introduction

Tied to CMAP's Strategic Plan

ON TO 2050 alignment

In partnership with RTA



Many types of technical assistance

# CMAP's Eligible Types of Assistance

Bicycle and pedestrian plans

Local road safety plans

Capital improvement programming

Neighborhood plans (City of Chicago)

Comprehensive plans

 NEXT (plan implementation assistance)

Corridor plans

Pavement Management Plans

Homes for a Changing Region plans

ROI program (grant readiness)

# CMAP Technical Assistance Program Purpose

Support communities by offering planning and implementation assistance, providing interagency expertise, and local government capacity building

When evaluating applications CMAP will consider several thematic priorities





# CMAP Thematic Priorities

## Does the proposed project:

Cultivate innovative approaches to implement ON TO 2050 with a focus on:

- A transportation system that works better for everyone with improved travel safety, increased and better-connected bicycle and pedestrian mobility options, and improved access for people with disabilities
- A robust and inclusive regional economy with increased inclusive growth through economic strategies that are coordinated and implemented, expansion of traded clusters critical to the region's growth, and broader diversity in housing choices
- A transportation network that is more resilient against the effects of flooding and other extreme weather with strategic investment decisions

# CMAP Thematic Priorities

## Does the proposed project:

Strengthen planning capacity in communities with disadvantaged populations

Increase community empowerment and equitable engagement



Implement previously developed local plans

Facilitate collaboration across jurisdictions

# RTA Call for Projects Introduction

Tied to RTA's Strategic Plan

*Invest In Transit* alignment

In partnership with CMAP



Many types of technical assistance

# RTA's Eligible Types of Assistance

Transit-Oriented Development plans

TOD Zoning Code Updates

Transit Corridor plans

Transit Neighborhood Mobility Improvement plans

Special Funding Districts

Curb Management Studies

Developer Discussions

# Timeline

October 8	Application opens
October 28	Application closes
November - December	CMAP / RTA review applications and contact applicants with additional questions
January	Project selection and approval processes

# Thank you.

**Jonathan Burch, CMAP**

[jburch@cmmap.illinois.gov](mailto:jburch@cmmap.illinois.gov)

314.609.1297

**Michael Horsting, RTA**

[horstingm@rtachicago.org](mailto:horstingm@rtachicago.org)

312.913.3159



Chicago Metropolitan  
Agency for Planning



Regional  
Transportation  
Authority

# 12.0 Local Government Network

## Patrick Day

Staff will update the committee on recent Local Government Network initiatives.

**ACTION REQUESTED: Information**

# 13.0 Legislative update

**Gordon Smith**

Staff will provide an update on relevant legislative activities.

**ACTION REQUESTED: Information**



# 14.0 Other business

## Chair Schielke

Committee members joining the meeting late should verbally make themselves known or send an email to [transportation@cmap.illinois.gov](mailto:transportation@cmap.illinois.gov) so your attendance is recorded.

# 15.0 Public comment

Comments emailed prior to the meeting will be read by staff.

Send a request through chat to make a verbal comment.

Callers: Wait for chairman to acknowledge you and remember to state your name.

# 16.0 Proposed 2022 Meeting Schedule

January 25, 2022

# 16.0 Adjournment



**Next meeting:  
(planned)  
January 25, 2022**

**Thank you!**

