


Kane County  
Bike / Pedestrian Plan Update



**CMAP  
BIKE/PED TASK FORCE**

March 14, 2012

---

---

---

---

---

---

---

---

**Quality of Kane  
2040 Plan**  
*Healthy People, Healthy Living, Healthy Communities*



Community Health & Reinvestment	Transportation	Land Use
 <ul style="list-style-type: none"> <li>Fit Kids 2020 Plan</li> <li>2011 Comprehensive Community Health Assessment</li> <li>2012-2016 Community Health Action Plan</li> <li>Public Health Services</li> <li>Community Reinvestment</li> </ul>	 <ul style="list-style-type: none"> <li>2040 Recommended Roadway Plan</li> <li>Blue Book Plan</li> <li>2040 Transit Plan</li> <li>Route 529 Study</li> <li>Bus Rapid Transit Study</li> <li>Rt. 47 Corridor Planning Study</li> </ul>	 <ul style="list-style-type: none"> <li>Draft 2040 Plan</li> <li>2040 Conceptual Land Use Strategy</li> <li>Rt. 47 Corridor Planning Study</li> <li>Final Draft 2040 Energy Plan</li> <li>Water Resources</li> <li>Farmstead Preservation and Local Foods</li> <li>Kane County Development and Community Services</li> </ul>

---

---

---

---

---


---

---

---

**Background - Need for Update**

- Original plan was adopted in December 2002
- Expanded Council of Mayor boundaries
- Updates to design guidelines
- IDOT Complete Streets Policy
- Significant population growth in Kane & Kendall Counties
- Previous Trails – approximately 210 miles
- Current Trails – over 300 miles




---

---

---

---

---

---

---

---

## Planning Objectives

- Publish a Bicycle and Pedestrian Plan
- Identify Funding Programs
- Publish a Kane County / Council Area Bikeways Map
- Facilitate Local Planning and Education
- Initiate a Coordinated Sign Program
- Facilitate Arterial Roadway Corridor Improvements
- **Update Bikeway Inventory System**
- **Develop a tool-kit for reviewing development, redevelopment and transportation related projects.**
- **Establish an Implementation Plan based on Regional Corridors**



---

---

---

---

---

---

---

---

## Goals of the Planning Process

- **GOAL 1:** Develop a regionally coordinated network of non-motorized facilities.
- **GOAL 2:** Improve the inter-modal efficiency of the transportation system by enhancing the connections between non-motorized and motorized modes.
- **GOAL 3:** Improve bicycle and pedestrian safety.
- **GOAL 4:** Incorporate bicycle and pedestrian elements into transportation, land use, and development planning and implementation actions on local levels.
- **GOAL 5:** Promote bicycling and walking to increase their use as a transportation mode.
- **GOAL 6:** Provide opportunities for funding bicycle and pedestrian projects.
- **GOAL 7:** Include local citizens and advocacy groups in the planning and implementation processes.



---

---

---

---

---

---

---

---

## Goals of the Planning Process

- GOAL 1: Develop a regionally coordinated network of non-motorized facilities and coordinate bicycle and pedestrian facilities through sub-regional and local actions.
- Performance Measures:
  - *A rating system similar the League of American Bicyclists Bicycle Friendly Community Award – ratings will be developed for each of the municipalities in Kane and Kendall County.*
  - *Miles of regional trails and number of local connections.*



---

---

---

---

---

---

---

---

## BICYCLE AND PEDESTRIAN PLAN

# APPENDIX B

### Performance Measurement Baseline

*A scorecard for identifying, tracking progress of the goals of the Bicycle and Pedestrian Plan.*

This scorecard is comprised of performance measures developed by an advisory working group of municipal, park district, forest preserve and county staff from Kane and Kendall Counties. Based on the mission and goals of the Bicycle and Pedestrian Plan, each performance measure tracks the progress of KCCOM members. This scorecard will act as a baseline for tracking future progress. Future reports will be provided annually at the Kane/Kendall Council of Mayors committee meetings and posted on the Council's website. If there is not currently any data for a performance measure, Council staff will work with the appropriate government organization or advocacy group to begin collecting data.

*December 2011*

**GOAL #1:** Develop a regionally coordinated network of non-motorized facilities and coordinate bicycle and pedestrian facilities through sub-regional and local actions.

Measurement	Included as Appendix C.
Develop a rating system similar the League of American Bicyclists Bicycle Friendly Community Award – rate each of the municipalities in Kane/Kendall County:	
Length of regional trails and number of local connections:	<b>Existing Regional Trails:</b> 140 miles <b>Existing Local Trails:</b> 305 miles

---

---

---

---

---

---

---

---

---

---

---

---

## Policy Recommendations

- Incorporate bicycle and pedestrian elements into roadway improvements
- Improve or construct rural roads with paved shoulders
- Achieve Minimum Bicycle Level of Service standards with road improvements
- Incorporate bicycle and pedestrian elements into plan development and reviews
- Improve path connectivity to destinations
- Follow nationally recognized standards
- Coordinate bike/ped elements with transit expansion
- Promote inter-governmental cooperation




---

---

---

---

---

---

---

---

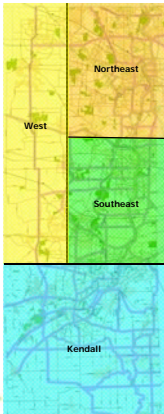

---

---

---

---

## Regional Priorities


---

---

---

---

---

---

---

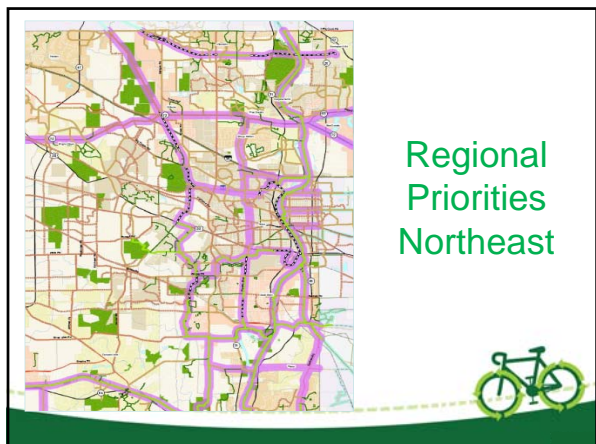
---

---

---

---

---




---

---

---

---

---

---

---

---




---

---

---

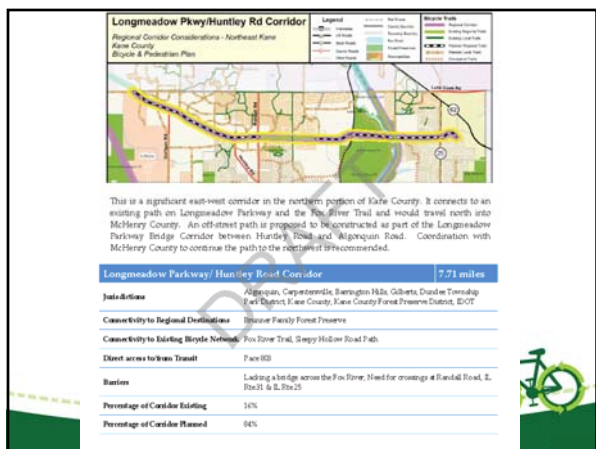
---

---

---

---

---




---

---

---

---

---

---

---

---

## Regional Priorities Southeast

---

---

---

---

---

---

---

---

## Southeast Priorities Keslinger Road Corridor

**Keslinger Rd / South St Corridor**  
Regional Corridor Considerations - Southeast Kane  
Kane/Kendall Council of Mayors  
Bicycle & Pedestrian Plan

---

---

---

---

---

---

---

---

**Keslinger Rd / South St Corridor**  
Regional Corridor Considerations - Southeast Kane  
Kane County  
Bicycle & Pedestrian Plan

The Keslinger Road / South Street Corridor from Elburn to Geneva is a logical place to add an east-west trail to the Kane County's network. Kane County and Elburn should continue to pursue ideapaths as part of development along Keslinger Road. Such a path would provide a connection to the La Fave Metra Station on the UP-W Line, Kane County's South Street Underpass project will provide a grade separated crossing for Randall Road and allow for a future connection to downtown Geneva and the Geneva Metra Station on the UP-W Line.

**Keslinger Rd / South Street Corridor** 9.25 miles

<b>Jobs &amp; Area</b>	Elburn, Geneva, Geneva Park District, Kane County, Kane County Forest Preserve
<b>Connectivity to Regional Destinations</b>	Illinois's Mineral Forest Preserve, Debar Hospital, Geneva Park District, Armstrong Geneva
<b>Connectivity to Existing Bicycle Network</b>	Mid-County Trail, Anderson Road Trail, Mill Creek Trail System, Elburn Trail System, Geneva Trail System, Fox River Trail
<b>Direct access to Mass Transit</b>	Metra UP-West Line at Elburn, La Fave & Geneva, Pace 525, Pace 503, Pace 502
<b>Barriers</b>	Need a crossing at Randall Road
<b>Percentage of Corridor Existing</b>	39%
<b>Percentage of Corridor Planned</b>	75%

---

---

---

---

---

---

---

---

### Questions?

Quality of Kane

[www.qualityofkane.com](http://www.qualityofkane.com)

Kane County DOT

[www.co.kane.il.us/dot/planning.aspx](http://www.co.kane.il.us/dot/planning.aspx)

Mike Sullivan

630-444-3142

[sullivanmike@co.kane.il.us](mailto:sullivanmike@co.kane.il.us)



---

---

---

---

---

---

---

---