



Chicago Metropolitan
Agency for Planning

Regional Transportation Data - Progress

Presented June 15, 2010

by Tom Murtha

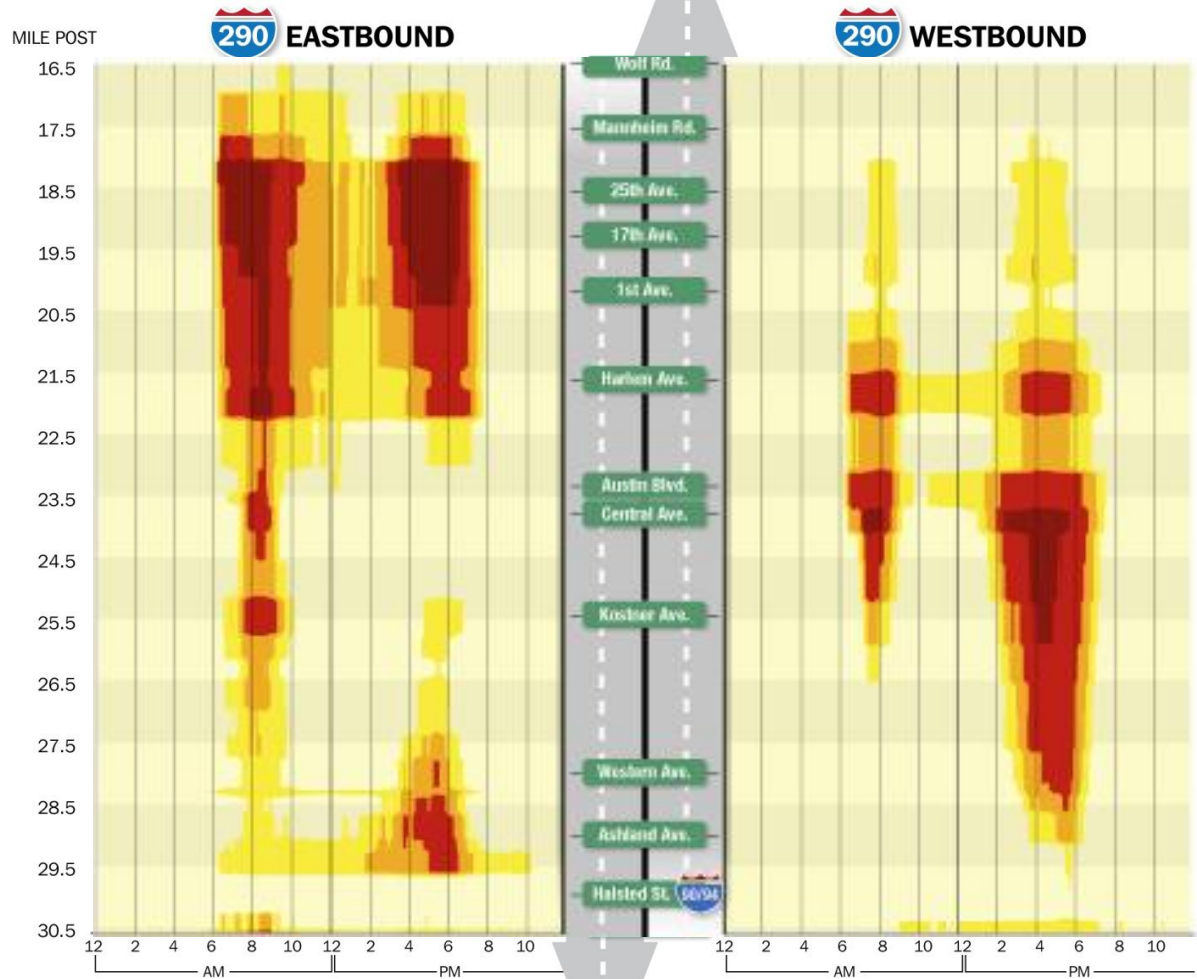
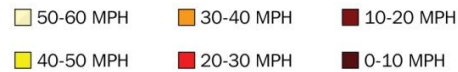
Senior Planner,

tmurtha@cmap.illinois.gov

Freeway Performance: Eisenhower

2009

I-290 Congestion Scan :



Note: Average speed is shown as a function of time of day (the horizontal x-axis) and location (the vertical y-axis).

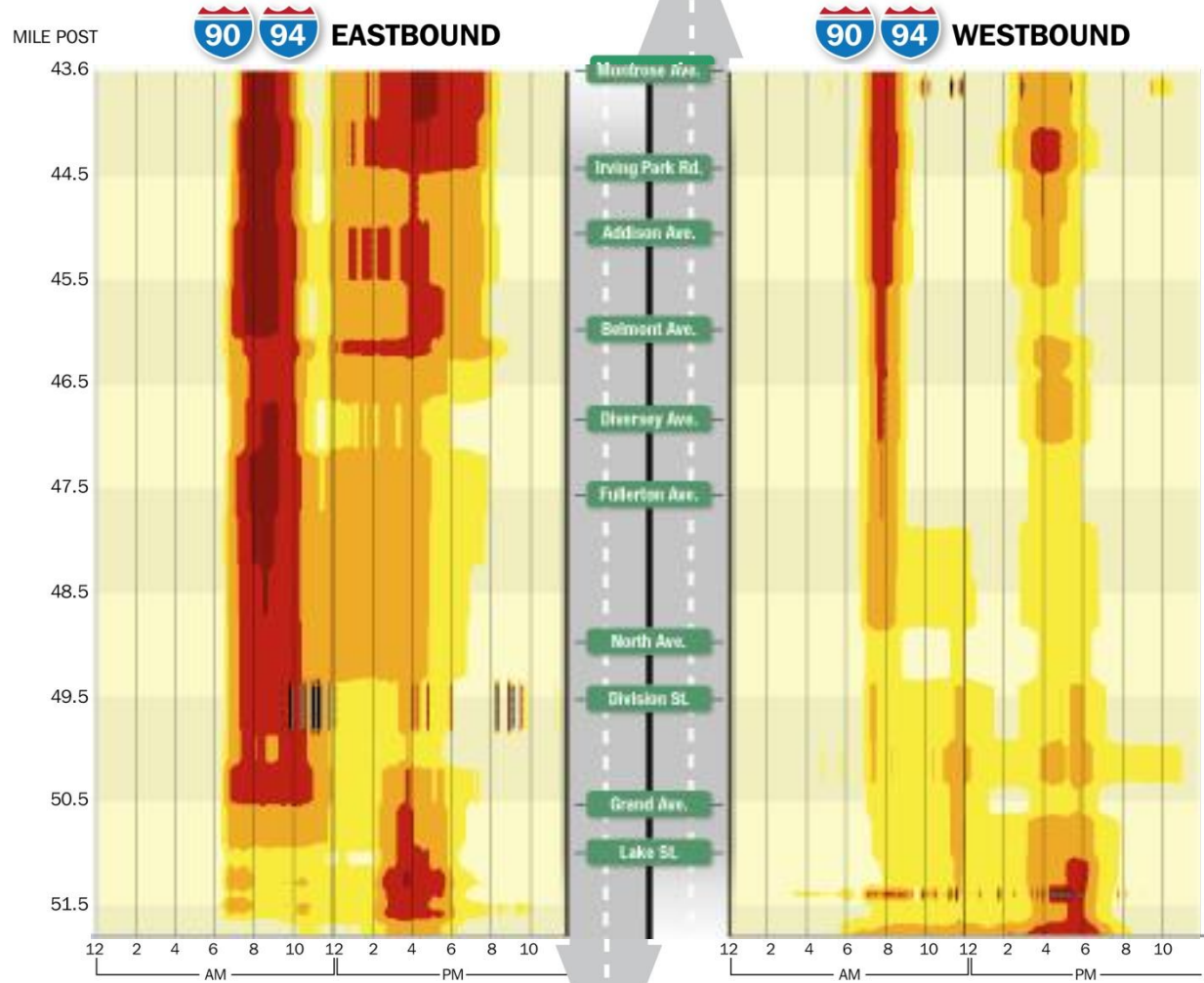
Source: Analysis by Chicago Metropolitan Agency for Planning, based on data from Traffic.com.

Freeway Performance: Kennedy

I-90/94 Congestion Scan, 2009



2009



Note: Average speed is shown as a function of time of day (the horizontal x-axis) and location (the vertical y-axis).

Source: Analysis by Chicago Metropolitan Agency for Planning, based on data from Traffic.com.

Freeway Segments: Highest Levels of Peak-Period Congestion*

AM Peak, 2009:

- I-90/94 Reversibles from Montrose to Ogden (EB AM TTI 3.00)
- I-90/94 Locals from I-94/Edens Expy to I-290 (EB AM TTI 2.89)
- I-90 from I-190 to I-94 / Edens (EB AM TTI 2.41)
- I-290 Ike from Wolf to Canal (EB AM TTI 2.32)
- I-90 from I-94/Edens to I-190 (WB AM TTI 2.17)

PM Peak, 2009:

- I-90 from I-190 to I-94 / Edens (EB PM TTI 3.56)
- I-290 Ike from Wolf to Canal (EB PM TTI 2.48)
- I-94/Edens from Deerfield Road to I-90/Kennedy (EB PM TTI 2.37)
- I-290 Ike from Canal to Wolf (WB PM TTI 2.31)
- I-90 from I-94/Edens to I-190 (WB PM TTI 2.04)

Freeway Segments: Changes in Peak-Period Congestion*

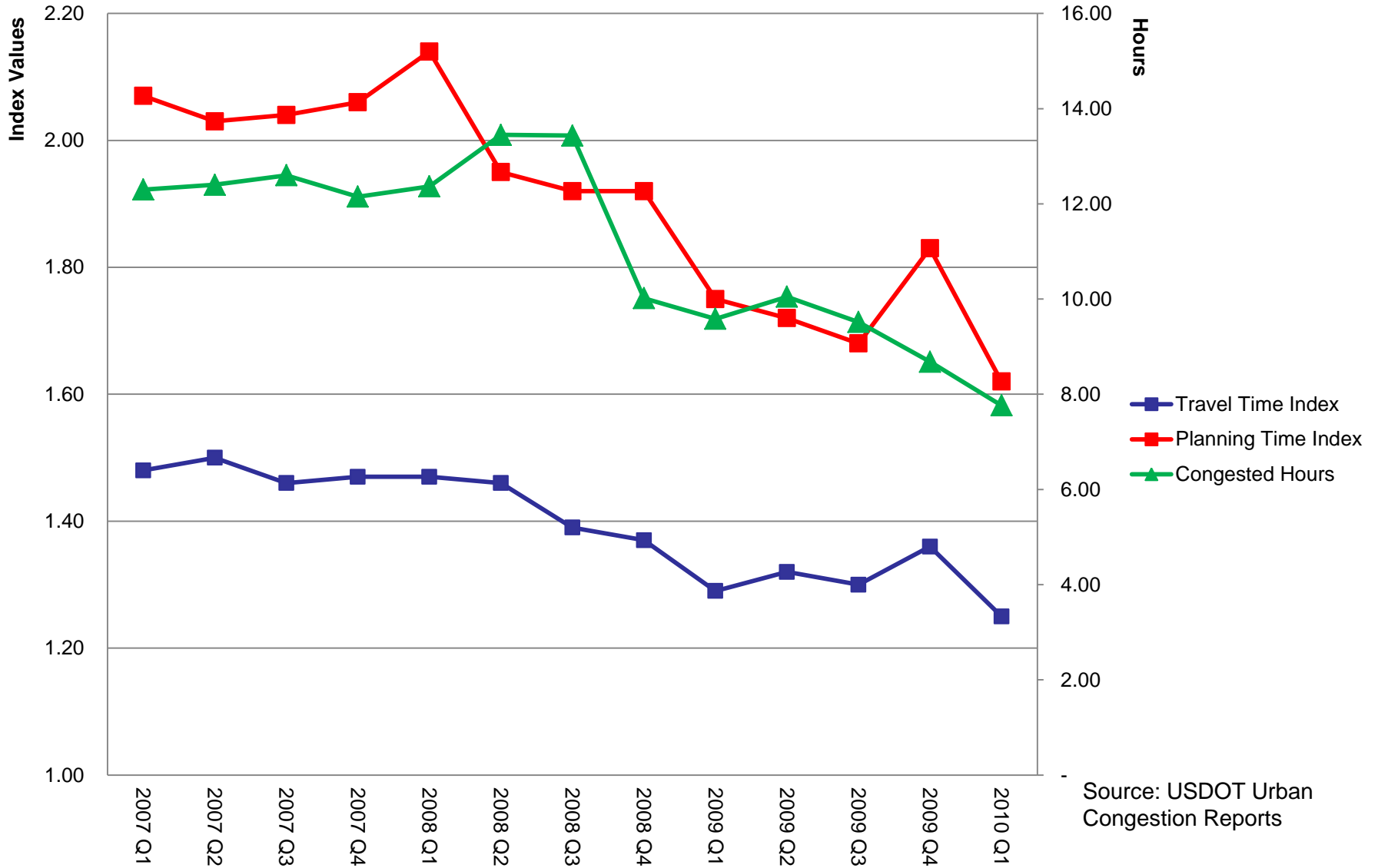
Fastest Reductions – '07-'09:

- I-294 from I-55 to I-90 (NB AM TTI 1.77 to 1.14) (SB PM TTI 1.52 to 1.07)
- I-190 from I-90 to Chicago O'Hare Int. Airport (EB PM TTI 2.10 to 1.49)
- I-90/94 Locals from I-290 to I-94/Edens Expy (WB PM TTI 2.51 to 1.87)
- I-355 from I-55 to I-88 (NB AM TTI 1.63 to 1.22)

Fastest Increases – '07-'09:

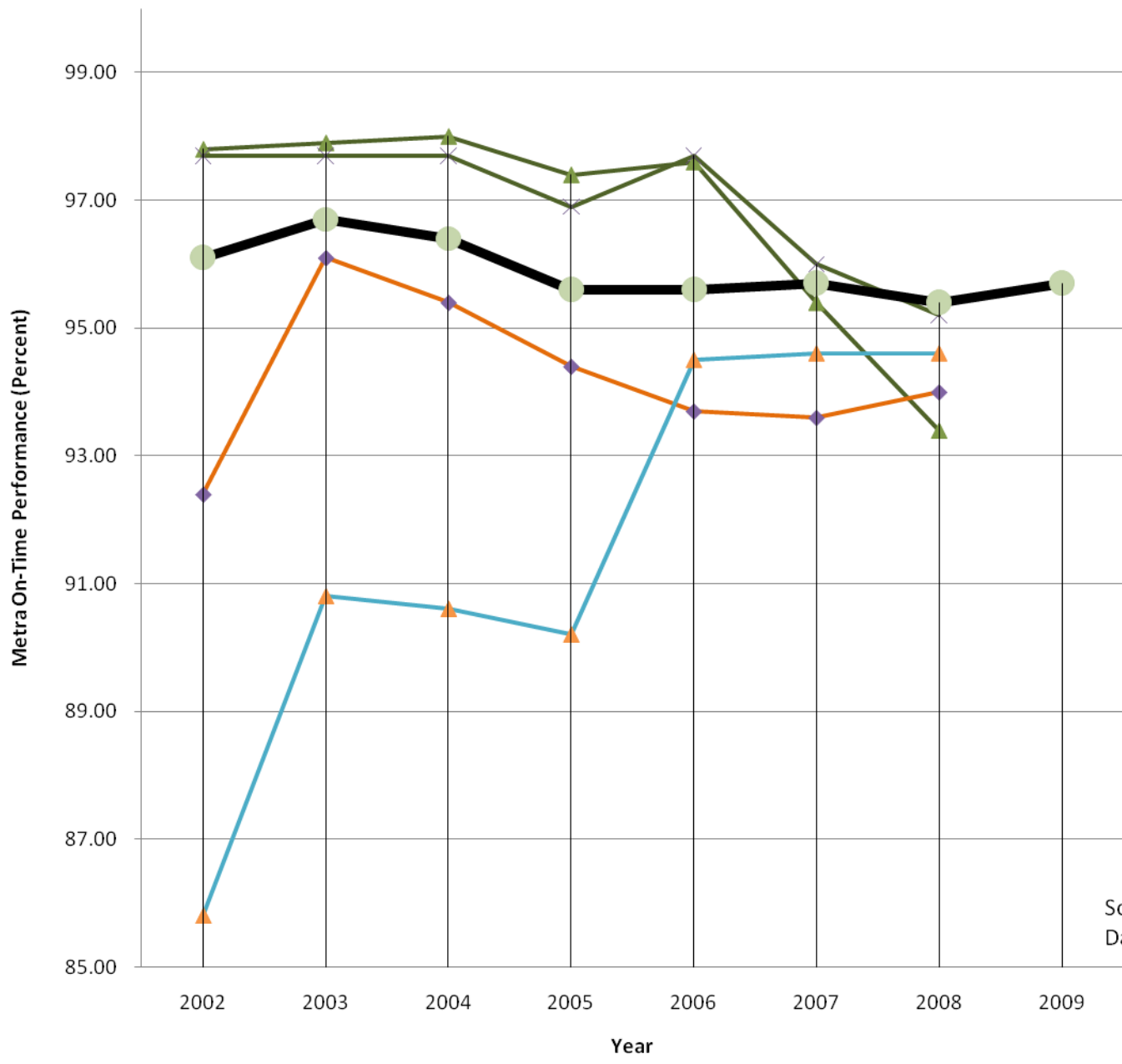
- I-90/94 Locals from I-94/Edens Expy to I-290 (EB AM TTI 2.28 to 2.89)
- I-90/94 Reversibles from Montrose to Ogden (EB AM TTI 2.38 to 3.00)
- I-90/94 Locals from I-94/Edens Expy to I-290 (EB PM TTI 1.81 to 2.01)
- I-57 from I-94 to I-80 (SB PM TTI 1.76 to 1.84)

Chicago Region Freeway and Tollway Congestion Indicators, 2007-2010



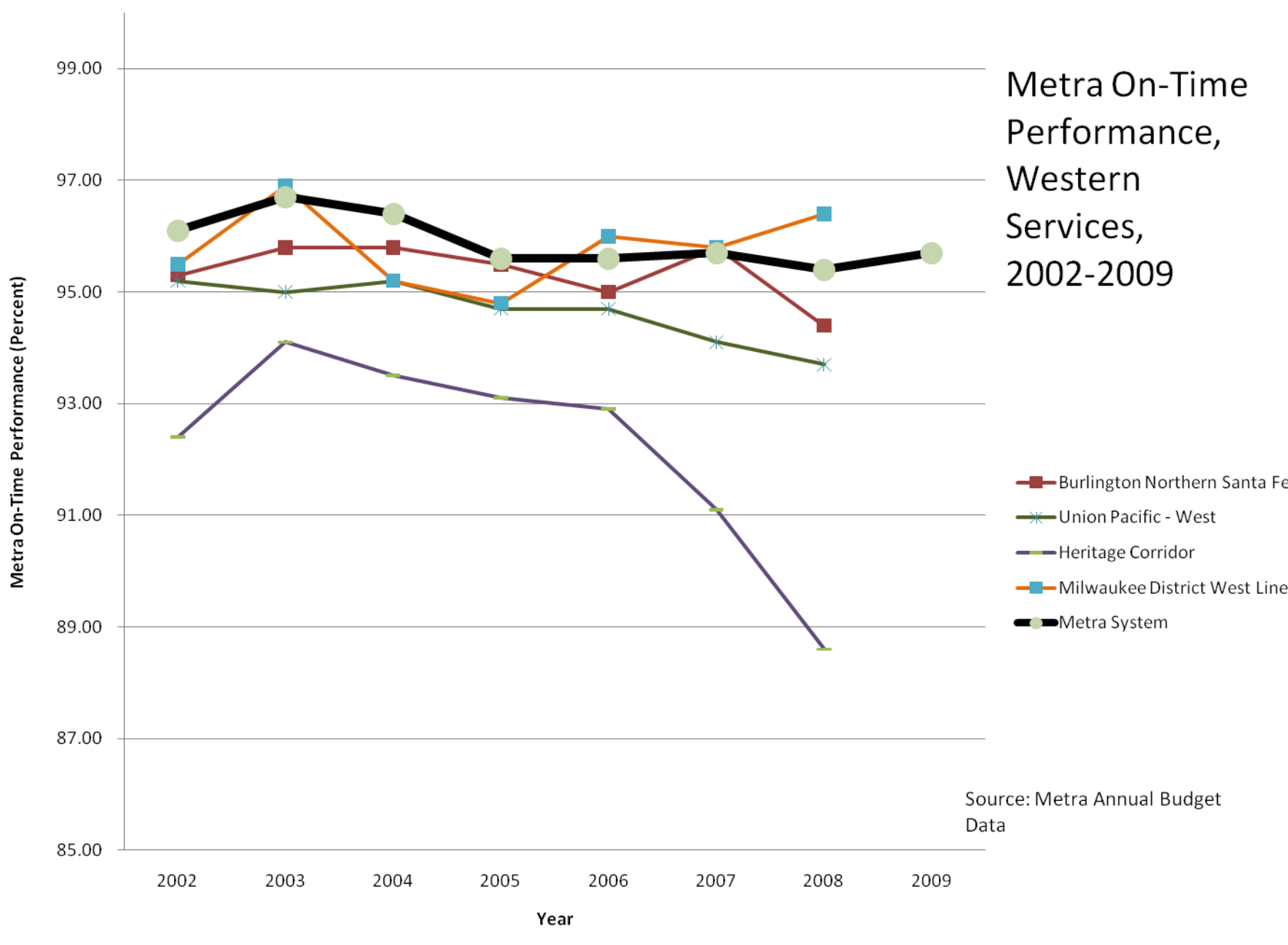
Source: USDOT Urban Congestion Reports

Metra On-Time Performance, North and Northwest Services, 2002-2009



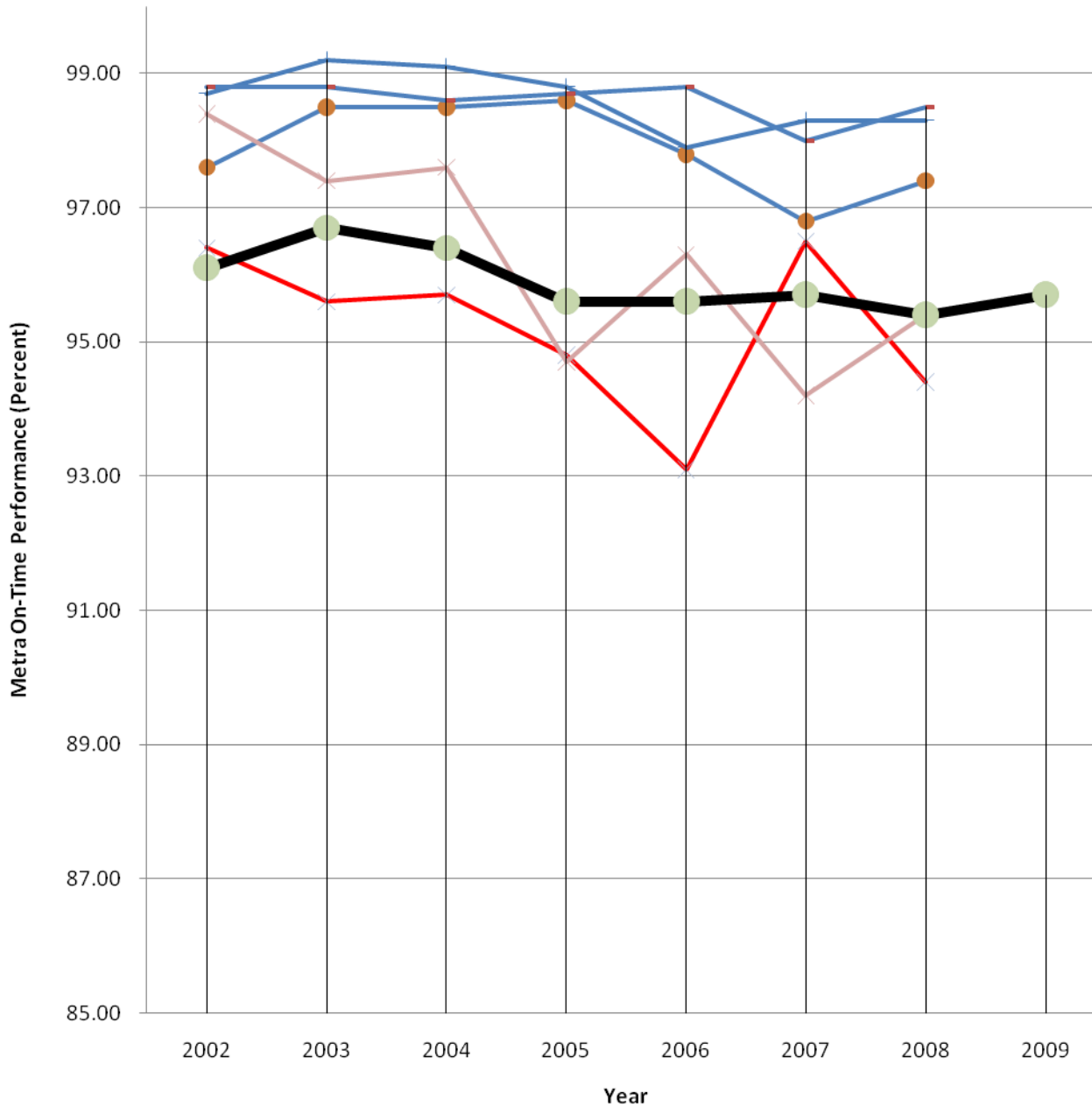
Source: Metra Annual Budget Data

Metra On-Time Performance, Western Services, 2002-2009



Source: Metra Annual Budget Data

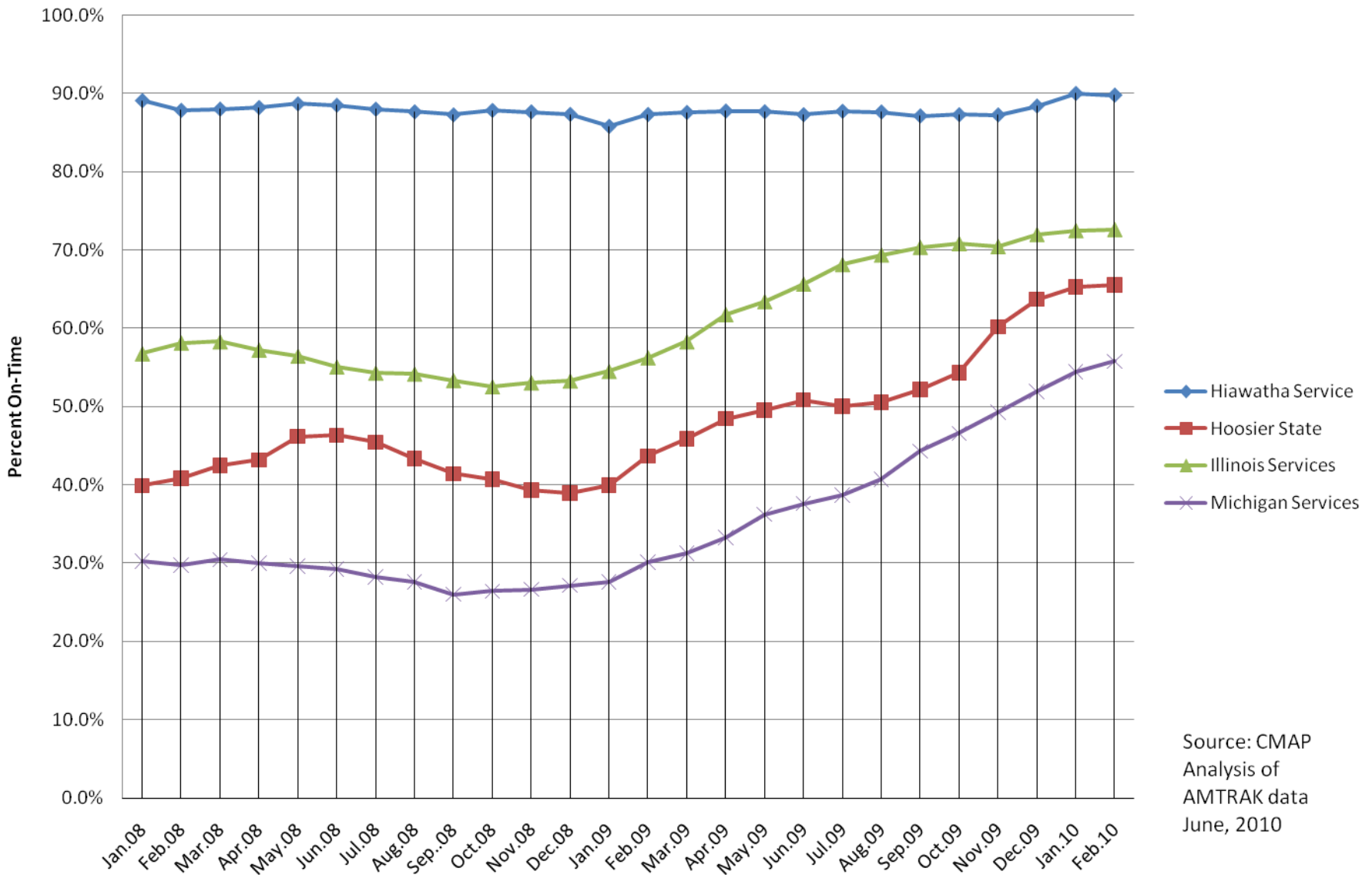
Metra On-Time Performance, South and Southwest Services, 2002-2009



Source: CMAP Analysis of Metra Annual Budget Data

Amtrak On-Time Performance by Short-Distance Service, 2008-2010

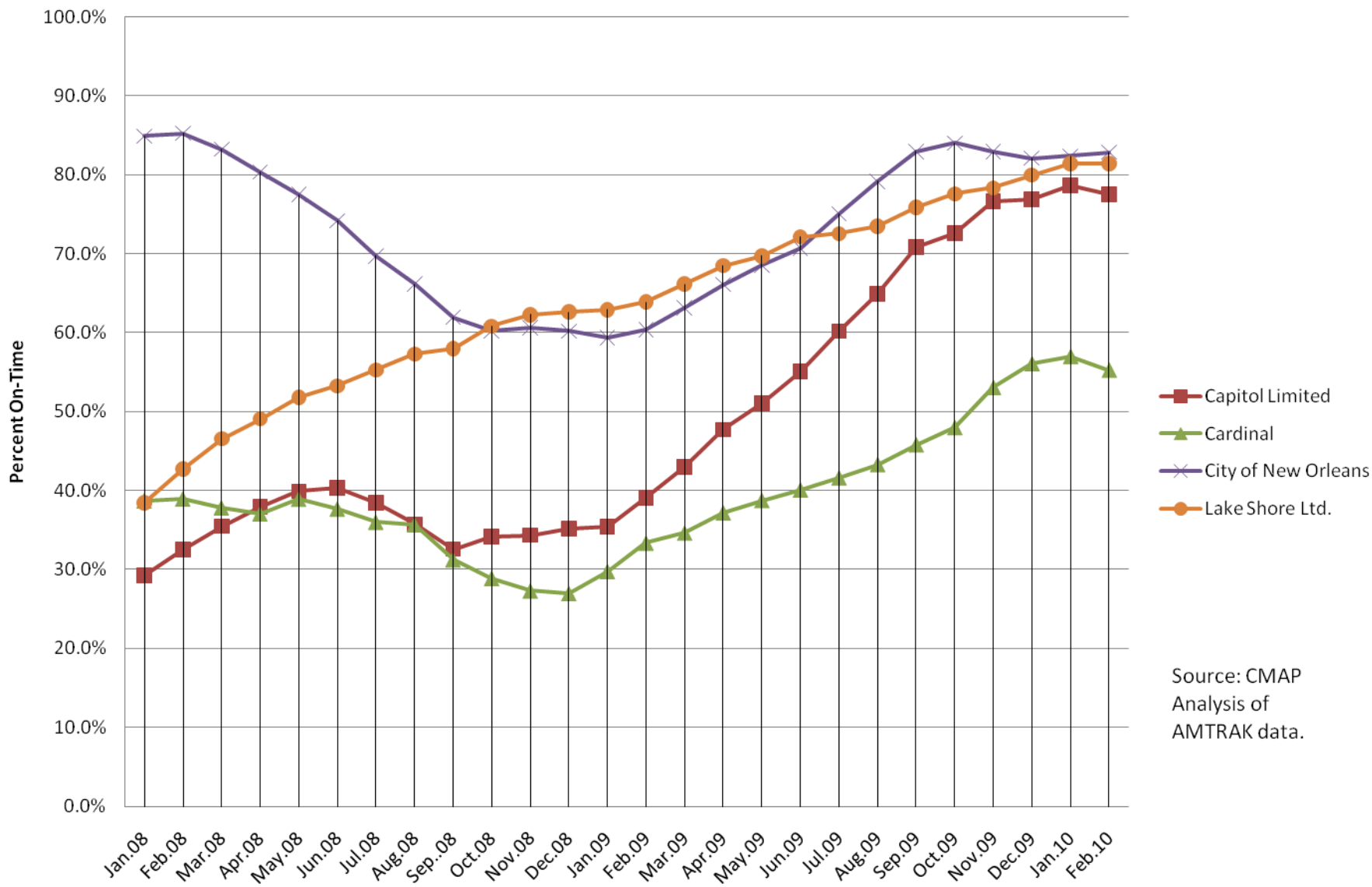
12-Month Moving Averages



Source: CMAP
 Analysis of
 AMTRAK data
 June, 2010

Amtrak On-Time Performance by Long-Distance Service, 2008-2010

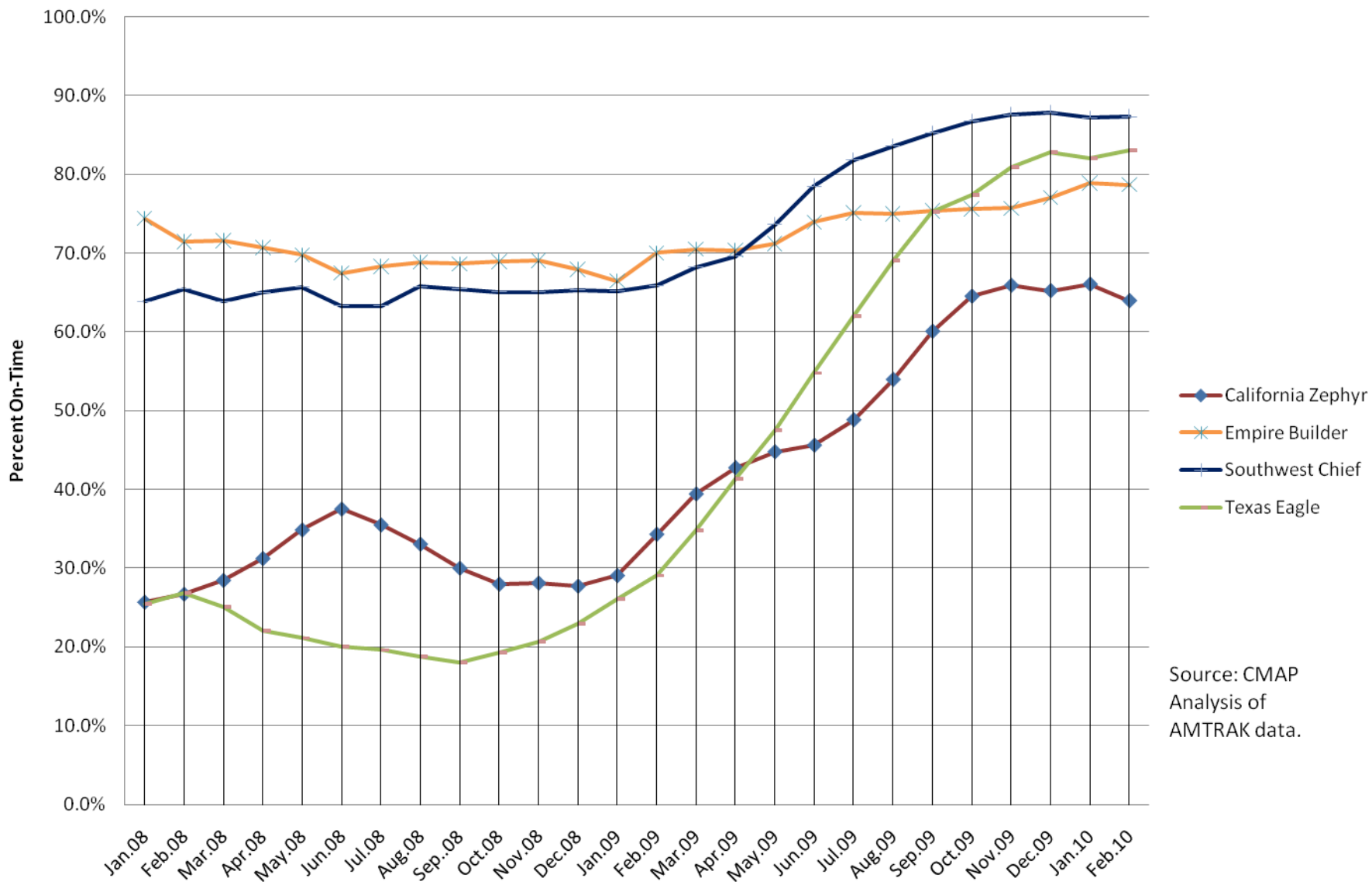
12-Month Moving Averages - Eastern Long-Distance Services



Source: CMAP
Analysis of
AMTRAK data.

Amtrak On-Time Performance by Long-Distance Service, 2008-2010

12-Month Moving Averages - Western Long-Distance Services



Source: CMAP
Analysis of
AMTRAK data.

Regional Transportation Data - Progress

CMAP Contact:

Tom Murtha

tmurtha@cmmap.illinois.gov

312-386-8790

Thank You