

Kane County Health Impact Assessment Training

**October 21, 2014
Jackie Forbes, MS
Health Planner
Kane County Health Department**

Objectives

- * Steps of Health Impact Assessment
- * How do I determine if a Health Impact Assessment is appropriate?
- * How do I get started with HIA?

What is Health Impact Assessment (HIA)?

- Evidence-based analysis with **strong community involvement**
- Examines the potential health impacts of a proposed policy, plan, or project. It is conducted ***before*** a decision is made
- Report recommendations based on survey results, literature review, analysis of existing data, and stakeholder input
- It is **not** policy – it is only recommendations that may or may not be implemented

Six Steps of HIA

- * **Screening**
- * **Scoping**
- * **Assessment**
- * **Recommendations**
- * **Reporting**
- * **Monitoring/Evaluation**

Step One: Screening

Is an HIA appropriate for this project?

- * Will it be completed before a decision is made?
- * Does our organization have the capacity to conduct an HIA?
- * Will the information from the HIA add value to the decision making process? Create **Recommendations**
- * What are the health impacts? What health indicators will be affected by this decision?
- * Who are the stakeholders?

Today we will complete a Screening Worksheet

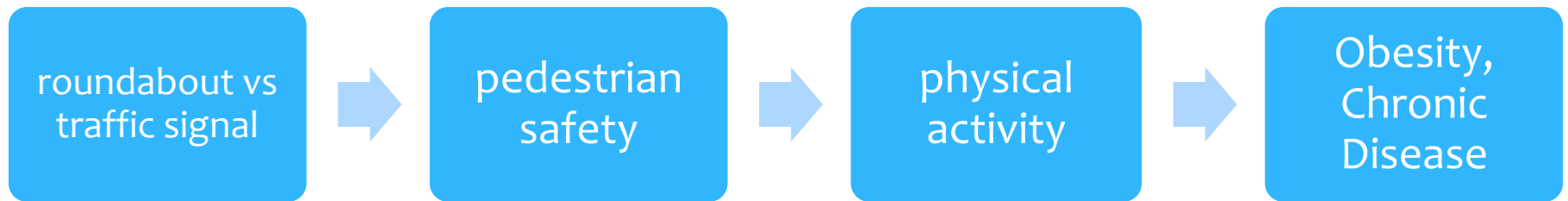
Step Two: Scoping

- * **What are the goals for the HIA?**
 - * Examine what is best for neighborhood residents
 - * Improve traffic flow with method best suited for stakeholders
 - * Provide evidence to decision makers and public
- * **What are the issues we want to study?**
 - * Air quality? Pedestrian safety? Current traffic conditions?
- * **What are the research questions?**
 - * How will the decision affect air quality? Traffic conditions?
- * **Who should be involved and how?**
 - * Survey residents within ½ mile of intersection?
- * **Develop pathway diagram**
 - * Links between the proposed decision and community health

Pathway Diagram

What are the health impacts?

- * Respiratory health/asthma
- * Diabetes
- * Obesity
- * Chronic Disease
- * Injuries (bike, pedestrian, vehicle)



Step Three: Assessment

Gather data on existing conditions and research potential health impacts

- * Determined in the Scope
- * Literature review
- * Survey, focus groups
- * Key stakeholder interviews
- * Internet resources
 - * Census, environmental measures, transportation, health

Step Four: Recommendations

- * Make predictions based on evidence from Assessment
 - * What do we predict will happen if a roundabout is installed?
- * Provide decision-makers (and the public) with recommendations that:
 - * **Mitigate** negative health impacts with specific alternatives
 - * **Support** positive health impacts
 - * **Address** community concerns before decision-making
 - * **Reflect** broad stakeholder input
- * **Not binding**

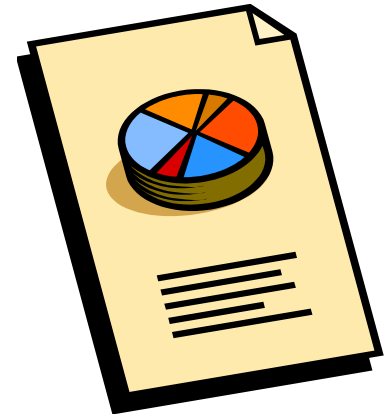
Example Recommendations

Recommendation	Result
Kane County should create and pass a separate, sister ordinance instead of amending the current ordinance 01-67 by Fall, 2013.	Keeps current program and its history intact, demonstrates the past success and desire to continue it. Sister ordinance will allow for more flexibility in funding.
Kane County should work with Northern Illinois Food Bank (NIFB) and Kane County Farm Bureau to study the feasibility of locating a food hub in the area by June, 2014.	Farmers have motivation to grow more vegetables with centralized cleaning, packaging and distribution available off farm.
The Farm Bureau should assist those farmers who apply to sell produce, meats and dairy for local consumption with resources and partnership such as Meet the Buyer events and other linkage programs.	More healthy produce and protein is available for Kane County residents, and increases Kane County farmers' earnings potential when paired with food hub.

Step Five: Reporting

Your plan for how to disseminate your findings and recommendations

- * Report, presentations, executive summary, social media, newspaper editorial



Step Six: Monitoring and Evaluation

What is your plan to track the impacts of the HIA on the decision making process?

- * What indicators are tracked? Traffic flow? Pedestrian/Bike counts? Air quality?
- * Long term? Asthma rates?
- * To whom will you report the data?
- * Evaluation can be a survey, interviews

Monitoring Example

Recommendation	Status
Kane County should create and pass a separate, sister ordinance instead of amending the current ordinance 01-67 by Fall, 2013.	Completed August 2013
Kane County should work with Northern Illinois Food Bank (NIFB) and Kane County Farm Bureau to study the feasibility locating a food hub by June, 2014.	In progress, applied for Illinois Department of Agriculture Grant – Sustainable Agriculture
The Farm Bureau should assist those farmers who apply to sell produce, meats and dairy for local consumption with resources and partnership such as Meet the Buyer events and other linkage programs.	Illinois Farm Bureau Meet the Buyer event held in Kane County on November 8th, 2013

Process Review



- * **Select research questions** – how will it affect air quality? Traffic injuries?
- * **Health assessment/literature review/data collection** – what is current air quality? How many accidents/pedestrian injuries? Are there examples of roundabouts vs. traffic signals in literature? Survey neighbors.
- * **Assessment results/findings** – Safer, better air quality, neighbors are concerned about elementary school nearby
- * **Predictions** - How will the roundabout impact selected health indicators? Improve air quality and safety
- * **Recommendations** – clearly mark crosswalks, add crossing guard
- * **Report** – present to elected officials, publish and print executive summary, publish full report online

HIA Examples

Health Impact Project

<http://www.healthimpactproject.org/>



How do I get started on an HIA?

Screening

Is an HIA appropriate in this situation?

Screening Worksheet



Yes, We are Conducting an HIA!

Now what?

Scoping

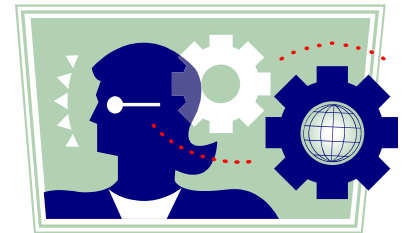
Determine goals

Determine who is involved and roles

Prioritize questions

Pathway diagram

Brain Break



Determine Goals

What do want to know at the end of this study?

- * Increase capacity to conduct an HIA**
- * Highlight health evidence as part of the debate**
- * Understand the relationship between local food production and the local and/or regional economy**

Who Should be Involved?

Who is part of the project team?

Who are our stakeholders?

Stakeholder engagement plan

Determine Research Questions

What questions do we ask?

**Is the data available or will we need to collect
new data?**

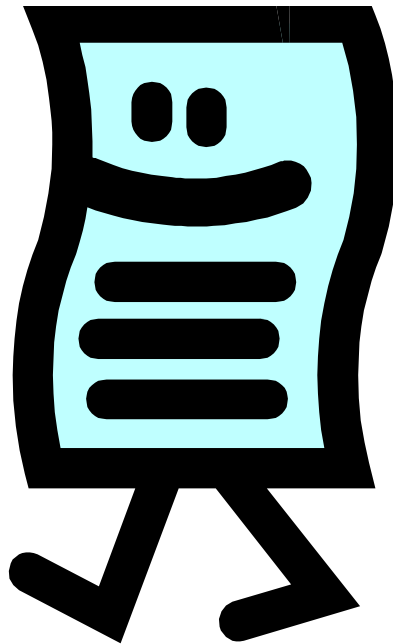
Who holds the data?

What are the health outcomes that will be addressed?

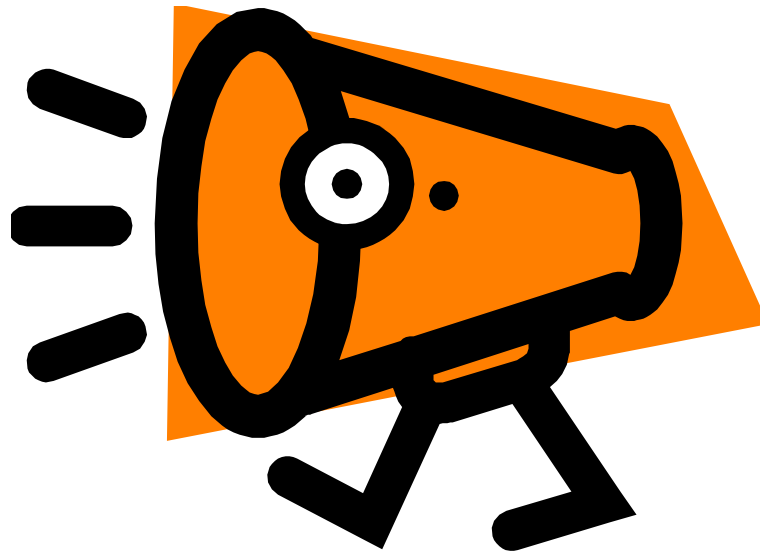
Common health issues:

- * Physical activity/inactivity
- * Crime and violence
- * Air quality
- * Noise
- * Access to health care
- * Chronic disease
- * Access to safe housing
- * Soil contamination
- * Alcohol consumption
- * Pedestrian injury

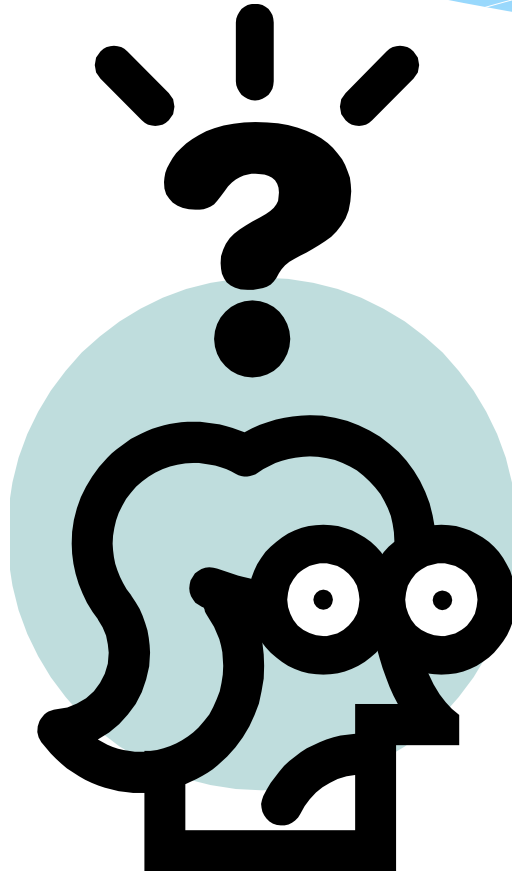
Scoping Worksheet



Report out



Questions?



Carpentersville HIA

Part Two

Stakeholder Workshop



Objectives – Part Two

- * Start working on Scope for the Carpentersville Project
- * Hands-on work
- * Use results to create Scope
- * Question and answer about project

Determine Goals

**What do want to know at the
end of this study?**

Who Should be Involved?

Who are our stakeholders?

- * Business owners / employees
- * School District 300
- * Dundee Township Park District & Kane County Forest Preserve
- * Cyclists
- * Emergency Responders
- * Churches
- * Hispanic community
- * Bus drivers
- * Elected Officials
 - * Village Board
 - * Parks & Business Development Committees (Village Board members)
 - * Kane County Board

Who is missing?

Determine Research Questions

What questions do we ask?

How many pedestrians cross this intersection per day?

Will the number of pedestrians that cross this intersection per day change based on the type of intersection improvement?

What are the health outcomes that will be addressed?

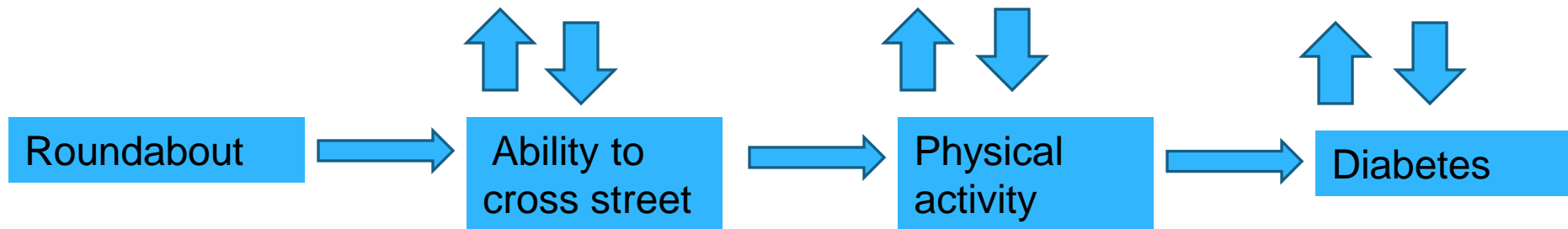
- * Air quality
- * Access to parks / open space
- * Increase physical activity
- * Emergency vehicle mobility
- * Mental wellbeing / lost time
- * Pedestrian and bike safety
- * Economic impacts
- * Traffic flow
- * Area employee / customer safety
- * Future senior housing residents
- * Noise pollution
- * Child / student safety

Need to focus on measurable health outcomes

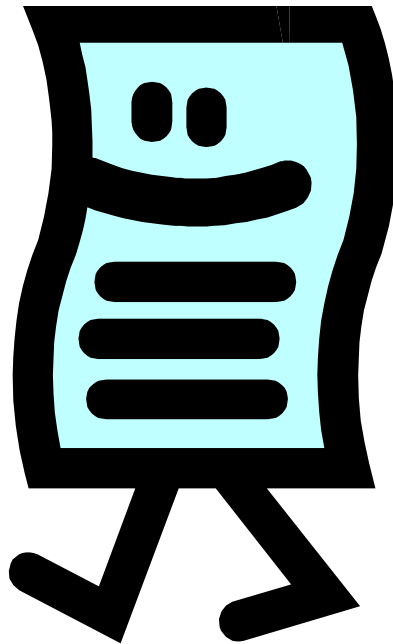
- * **Air quality/Respiratory illness** (asthma)
- * **Access to parks / open space** (physical activity)
- * **Increase physical activity**
- * **Emergency vehicle mobility**
- * **Mental wellbeing / lost time** (mental health)
- * **Pedestrian and bike safety** (injury)
- * **Economic impacts**
- * **Traffic flow**
- * **Area employee / customer safety** (injury)
- * **Future senior housing residents** (pedestrian accidents)
- * **Noise pollution** (mental health)
- * **Child / student safety** (injury)

Pathway Diagram

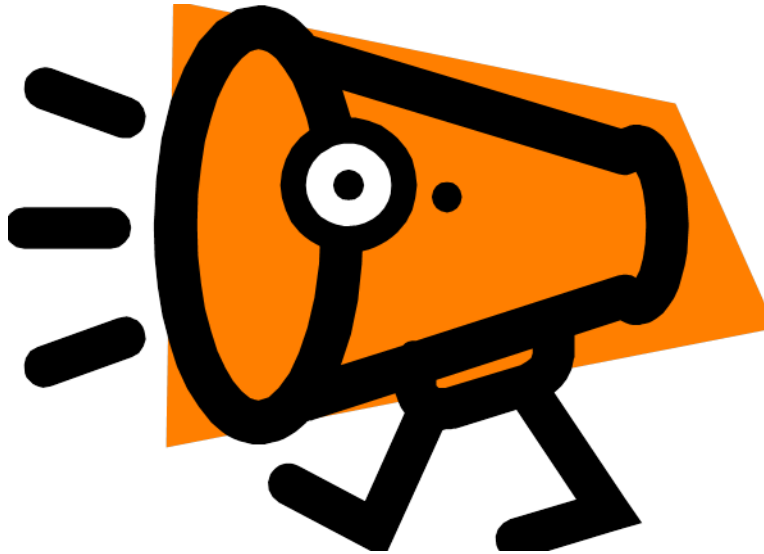
How do we get from the decision to the health outcomes?



Scoping Worksheet



Report Out and Questions



Thank you!
Please complete an evaluation

<http://www.cmap.illinois.gov/programs-and-resources/Ita/carpentersville-hia>

<http://vil.carpentersville.il.us/>

<http://countyofkane.org/Pages/Kane-County-Planning-Cooperative.aspx>