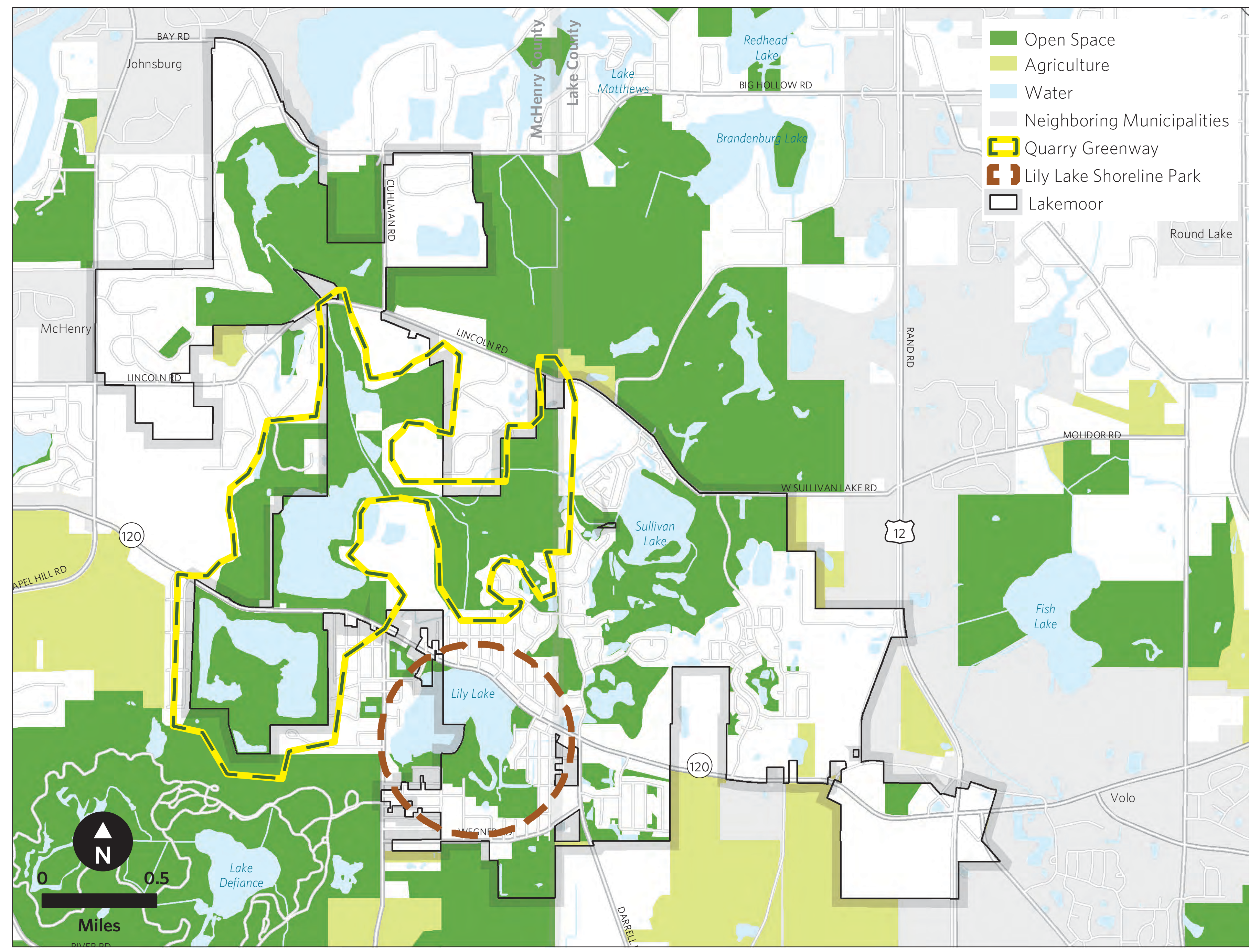


# OPEN SPACE AND NATURAL RESOURCES

## RECOMMENDED STRATEGIES

- A.1. Acquire land or easements to protect open space.
- A.2. Identify and preserve scenic resources.
- A.3. Manage open space to maintain ecosystem functions.
- A.4. Conduct a groundwater study and preserve critical recharge areas.
- A.5. Encourage green infrastructure practices for stormwater management.
- A.6. Update subdivision and zoning ordinance to protect natural resources.
- A.7. Encourage landowners to adopt sustainable practices.
- A.8. Adopt sustainable practices in municipal activities.
- A.9. Work with agricultural landowners to protect farmland.
- A.10. Adopt regulatory changes that will support agricultural uses and agribusiness.
- A.11. Encourage sustainable agricultural activities and the production of locally-grown food and other products.



## KEY RECOMMENDATIONS

**1 QUARRY GREENWAY**  
The plan recommends transforming the area between Moraine Hills State Park and the Volo Bog Complex, including the two quarry sites, into a regional destination that provides recreational opportunities along with habitat areas.

Inspired by other quarry redevelopment projects, this greenway could include pedestrian and bicycling trails accessible from Rt. 120 with trailheads close to the heart of Lakemoor.



**2 LILY LAKE SHORELINE PARK**  
Recognized as a key component of the community's identity, the plan recommends working to improve access to Lily Lake and extend the existing shoreline park and trail.



**3 USE GREEN INFRASTRUCTURE PRACTICES**  
The term 'green infrastructure' refers to planning concepts that work together to conserve natural ecosystem functions and provide a variety of benefits to people and wildlife.

At the community scale, it is the interconnected network of natural lands that provide essential environmental functions.

At the neighborhood scale, it incorporates compact, mixed-use development and landscaping to make communities greener, more livable, and more attractive.

At the site scale, it mimics natural systems by filtering and infiltrating stormwater using rain gardens or swales that allow it to seep into the ground.