



SERVE

MCHENRY

LAKE



SHAPE

KANE

COOK

DUPAGE

KENDALL



SOLVE

TOGETHER

2022 YEAR IN REVIEW



Chicago Metropolitan
Agency for Planning



VISION

An inclusive and thriving region

MISSION

To serve the people of the region by driving innovation, fostering shared action, and advancing toward a common vision

CORE VALUES



Serve with passion

We are passionate about serving the people of metropolitan Chicago. We build public trust by being good stewards of public resources and proactively sharing information.



Lead with excellence

We lead on issues that advance the region. We believe in the power of data and the story it tells. We identify and share solutions and inspire others to adapt them for their communities.



Pursue equity

We are guided by the principle that everyone has a right to opportunity and a high quality of life. We work to realize equity for all.



Drive innovation

We are driven by the desire to find more efficient methods to achieve the most impact. We do this by seeking new solutions to old problems, taking calculated risks, and daring to try them.



Foster collaboration

We believe inclusion and collaboration strengthen our work. We seek out the voices of those who often go unheard or face barriers to public participation.

TABLE OF CONTENTS

Message from the executive director and Board chair	1
CMAP overview	2
Strategic Direction	4
Focus on: Transportation	5
Focus on: Climate	7
Focus on: Economy	8
Focus on: Engagement	9

MESSAGE FROM THE CHICAGO METROPOLITAN AGENCY FOR PLANNING

This 2022 Annual Report to the CMAP Board and our communities, as required by the Illinois Regional Planning Act, highlights progress toward our region's shared vision and ON TO 2050 goals to make northeastern Illinois a stronger, more resilient place to live.

CMAP's work — on behalf of our 7 counties, 284 municipalities, and 8.6 million residents — is guided by ON TO 2050, the region's 30-year comprehensive plan and its core principles of inclusive growth, resilience, and prioritized investment.

To help focus our efforts and achieve measurable progress on the region's long-term goals, CMAP's work is also guided by a five-year Strategic Direction and the annual budget and work plan.

This annual report looks back at significant progress made over the last calendar year and provides highlights toward improving the region's transportation systems, addressing climate resiliency, and ensuring we have a thriving economy, while embracing and applying an equity lens. It also highlights our continued efforts to deliver local assistance and resources and inform and engage diverse audiences.

As we look ahead, we will continue to address challenges as regions everywhere else are — solving our transit funding crisis, addressing traffic safety and saving lives, investing in declining infrastructure, improving equity and accessibility, mitigating the impacts of climate change, and maintaining a strong economic position in the global economy and the nation's hub for freight and goods movement.

We believe we are at a turning point for our region, with the influx of funds from Infrastructure Investment and Jobs Act, a renewed focus around regional collaboration, and a strong, strategic direction to guide our work.

Together, we can serve the people of this region, shape our future through planning and policy, and solve complex problems.



A handwritten signature in black ink, appearing to read 'Erin Aleman'.

Erin Aleman
Executive Director of CMAP



A handwritten signature in black ink, appearing to read 'Gerald R. Bennett'.

Mayor Gerald R. Bennett
CMAP Board Chair and Palos Hills Mayor

CMAP OVERVIEW

WHO WE ARE

As a federally designated metropolitan planning organization (MPO), CMAP develops the region's comprehensive plan (ON TO 2050) which sets a 30-year vision to guide public and private investments across the region. As the MPO, CMAP plans and programs federal transportation dollars through a collaborative process.

CMAP is also the state-authorized regional transportation planning agency for northeastern Illinois responsible for managing an integrated land use and transportation planning process.

WHAT WE DO



Plan regionally and locally

- Develop ON TO 2050 and coordinate implementation
- Strengthen communities through direct assistance, training, and resources



Prioritize and program

- Evaluate, manage, and distribute federal transportation funds



Deliver data

- Serve as the region's authoritative data source
- Forecast, model, and share data
- Inform and shape policy through data research and analysis
- Use data to assess complex regional issues as related to travel, land use, and policy



Collaborate and convene

- Work on behalf and alongside our partners to implement ON TO 2050
- Facilitate dialogue with government partners, community organizations, stakeholders, and the public
- Inform and engage diverse audiences in planning, consensus-building, and decision-making

What is ON TO 2050?

The region's 30-year comprehensive plan that guides transportation investments and frames regional priorities on development, the environment, the economy, and other issues affecting quality of life. ON TO 2050 envisions action not just by CMAP, but by many different groups.

ON TO 2050 UPDATE: State of the region and progress toward regional goals

In 2022, CMAP and regional partners updated the ON TO 2050 plan to provide a closer look at the state of our region today and progress toward our shared goals. This year-long process included data collection, analysis, and engaging with partners, stakeholders, and residents. It culminated with approval of the plan by the CMAP Board and MPO Policy Committee.

Since adopting the plan four years ago, a global pandemic disrupted economies, deepened inequities, and changed the ways people move throughout the region. The updated plan shares valuable analysis and key findings influenced by these drastic and defining shifts, including important data on population forecasts, transportation investments, and funding resources. The update maintains a clear vision of what priorities need to be advanced to achieve an inclusive and thriving region.

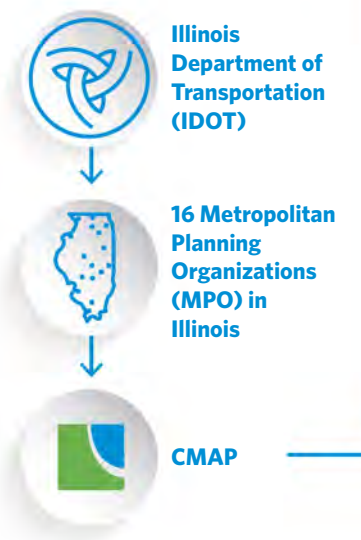
CMAP will begin to embark on the development of the next plan through a collaborative, research-driven process that will take several years.

HOW CMAP SERVES THE REGION

Federal funding

U.S. Department of Transportation (USDOT) Metropolitan Planning funds
 Other USDOT funds (through the Federal Transit Administration and the Federal Highway Administration) to fund local projects through the Transportation Improvement Program

Fund distribution



MPO Required functions

CMAP roles & functions

Unified Work Program (UWP) grants to partner agencies
 CMAP supports the comprehensive core and competitive funding process to carry out required federal and state planning functions. UWP partner agencies (CDOT, Council of Mayors, planning liaisons, Metra, Pace, counties (on annual rotation) receive direct grants to fund transportation work and core MPO activities.

Metropolitan Transportation Plan (MTP)
 ON TO 2050 (30-year regional plan)

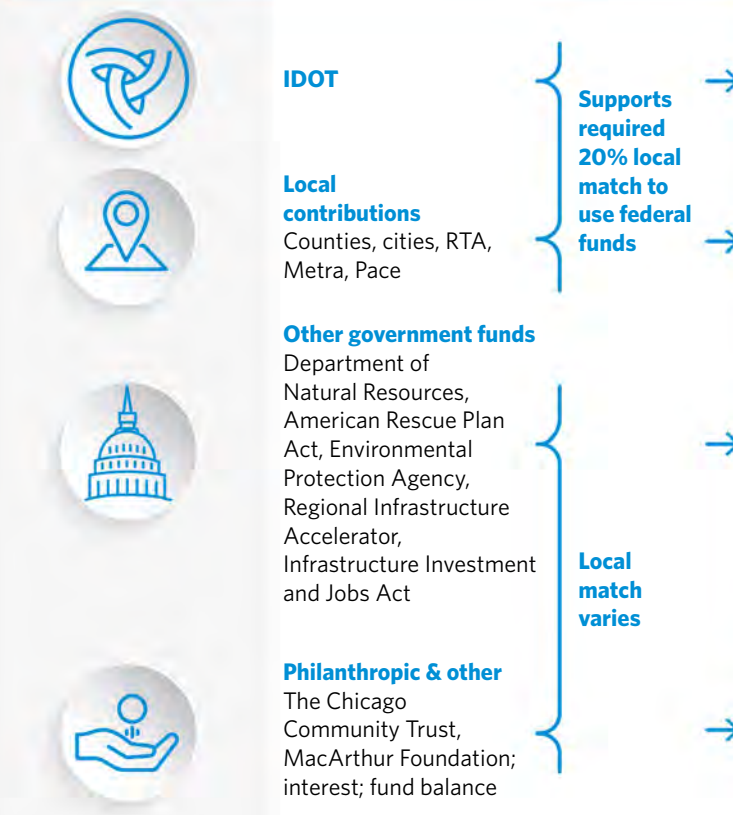
Management of Transportation Improvement Program (TIP)
 5-year program

Unified Planning Work Program
 1-year planning programs and project activities

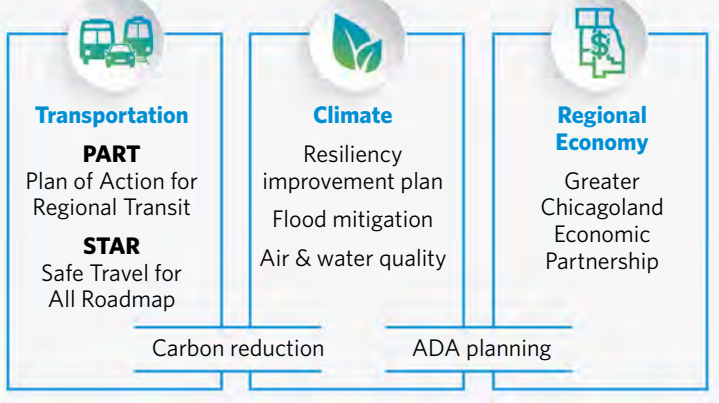
Programming of federal transportation funds
 CMAP manages the TIP and programs federal transportation funds for capital and non-capital projects, bicycle and pedestrian facilities, and other transportation enhancements. CMAP evaluates applications through the Call for Projects and programs funds to agencies under these grant programs:



Other funding



Regional priority focus areas



STRATEGIC DIRECTION

Progress toward achieving our region's 30-year goals is gradual and often realized over long periods of time, even decades. To help focus our work and achieve measurable progress on the region's long-term goals, our work is also guided by a five-year Strategic Direction.

In 2022, we moved to a new committee structure that better aligns our Strategic Direction focus areas (Transportation, Regional Economy, and Climate) with specific objectives. The restructuring allows for policy level, advisory level, and working level committees.

Each of the committees is comprised of members representing a variety of subject matter experts and local stakeholder representatives.

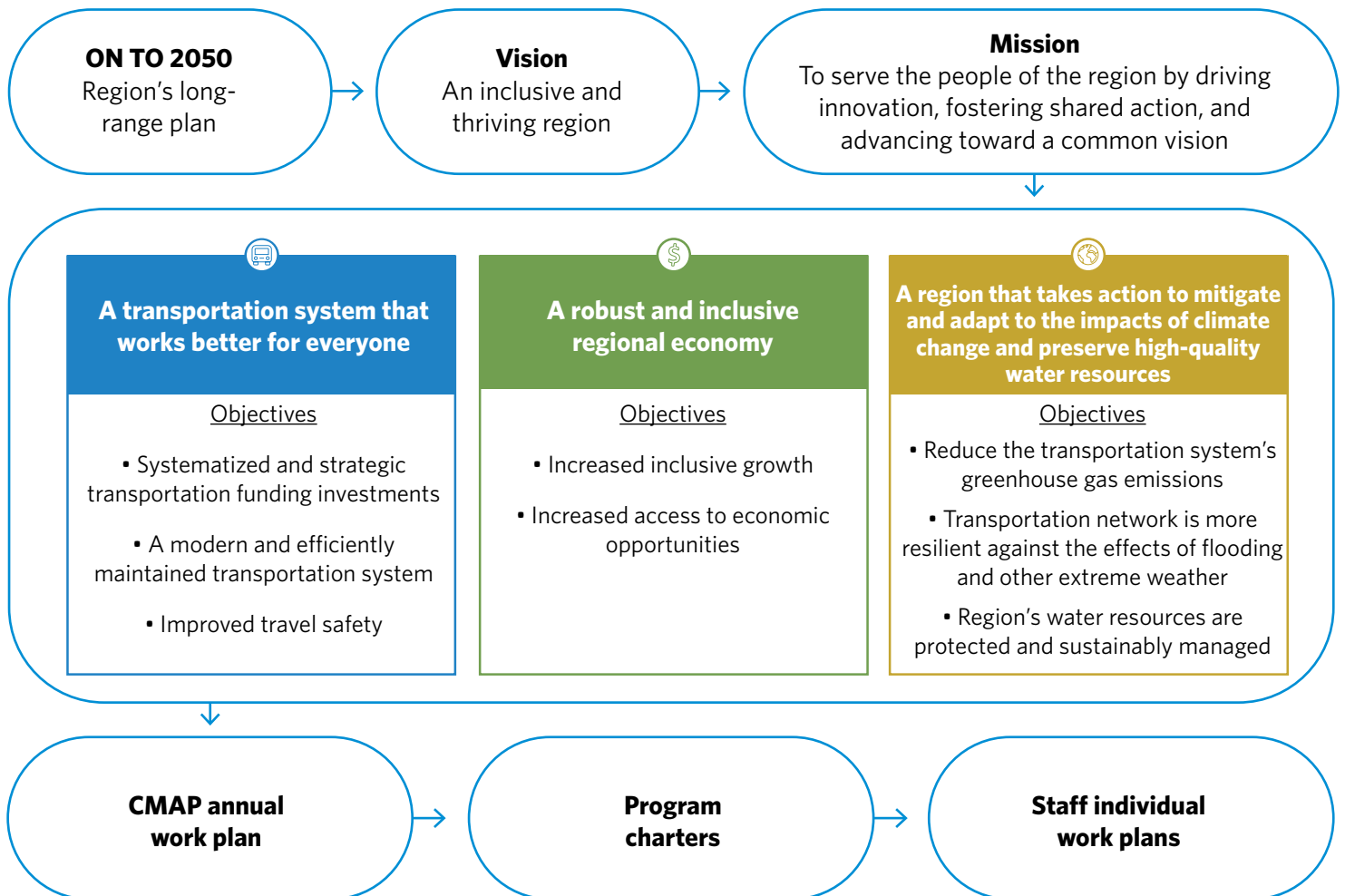
We engaged with each of the committees and the Board in 2022 to develop our goals, objectives, and performance measures to track success.



IN APPRECIATION

Thank you to our dedicated CMAP Board, MPO Policy Committee, and other committee members who volunteer their time, energy, and expertise to shape, influence and improve our region.

The meetings calendar can be found at cmap.illinois.gov. All meetings are open to the public, live-streamed, and archived.



FOCUS ON TRANSPORTATION

Goal: A transportation system that works better for everyone

Mobility recovery

The COVID-19 pandemic has posed lasting challenges and created new opportunities to reimagine the ways people and goods move throughout northeastern Illinois. CMAP worked together with transportation leaders and advocates throughout our seven counties to finalize a visionary strategy that reimagines regional mobility to meet post-pandemic realities.

The Mobility Recovery report, released in fall 2022, includes recommendations to strengthen the region's transportation system so that it works better for everyone, including improving transit, reducing congestion, and addressing travel safety.

The report was the capstone to a nearly two-year effort — supported through extensive research, analysis, and outreach — that tracked trends to better understand how our region's transportation needs evolved during the pandemic and identified numerous strategies to address these challenges. It also provides a strong foundation that can support the region's ongoing efforts to improve regional mobility. CMAP, alongside numerous partners and stakeholders, launched the Plan of Action for Regional Transit (PART) in early 2023 to develop a comprehensive suite of legislative recommendations for the Illinois General Assembly to consider. Transit remains the backbone of our region, providing vital means to reach destinations throughout northeastern Illinois.

Learn more at www.cmap.is/mobilityrecovery



PART steering committee, 2023

Transportation Improvement Program highlights



CMAP managed 2,000+ changes to the region's 5-year Transportation Improvement Program, programming federal funds for local transportation projects across the counties and municipalities in northeastern Illinois.

2000+



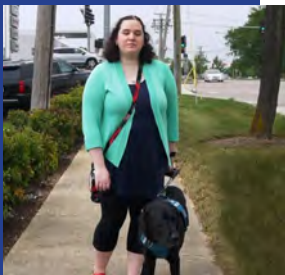
Assisted 11 councils of mayors and the City of Chicago in developing projects with nearly one billion in federal Surface Transportation Block Grant (STP) funding over the next 5 years.

\$1B



The STP Project Selection Committee modified its criteria for evaluating safety projects with high risk crash types involving vulnerable road users and those involving speeding, and added transportation system resilience as a factor for prioritizing projects for funding. The Congestion Mitigation and Air Quality Improvement Program (CMAQ) and Transportation Alternatives Program (TAP-L) Selection Committee incorporated Justice 40 principles into existing inclusive growth measures to develop an equity score for evaluating projects that help mitigate congestion, improve air quality, and help to complete the Regional Greenways and Trails plan.

FOCUS ON TRANSPORTATION



New program helps communities improve accessibility

CMAP is encouraging and supporting public entities to comply with the Americans with Disabilities Act (ADA) and implement accessibility improvements. Only 22 municipalities — 11 percent of the region — currently have ADA transition plans as required by Title II. Launched in 2022, CMAP's program delivers in-person trainings with guidance on ADA self-evaluation and design standards, transition plans, and the role of ADA coordinators.

Learn more at www.cmap.is/accessibility

11%



IDOT, CMAP, and counties partner to improve traffic safety

A \$5 million federal grant — awarded in response to a joint application submitted by CMAP and IDOT in partnership with six of the region's counties — will help the region address a rise in traffic deaths, particularly among pedestrians and bicyclists. The USDOT funding will go toward building the comprehensive Safe Travel for All Roadmap program and developing countywide safety action plans with technical assistance from CMAP. These plans will enable the counties and their municipalities to meet eligibility requirements to apply for federal implementation grants in the future.

Learn more at www.cmap.is/safety

\$5M



Region agrees on priority projects

CMAP convened federal, state, and regional partners to collaborate and develop consensus on the best ways for the region to maximize the many funding opportunities available under the Infrastructure Investment and Jobs Act (IIJA). These convenings culminated with the release of the region's [IIJA priority projects booklet](#), which details the 20 projects that align with the core principles that guide IIJA and our region — inclusive growth, resilience, and prioritized investment.

Learn more at www.cmap.is/IIJA

20+



20+ communities receive grants

More than 20 communities will be able to advance transportation improvements and planning projects using grants awarded through CMAP's technical assistance program. The selected projects cover improvements to better protect bicyclists and pedestrians, enhance accessibility, and preserve and maintain community infrastructure.

Learn more at www.cmap.is/2023LTA

20+



New equity alliance strengthens community collaboration

In a first-of-its-kind initiative for the region, a group of 12 community-based organizations are working with CMAP to enhance equitable planning and strengthen community collaboration. The Community Alliance for Regional Equity (CARE) members will contribute their expertise and lived experiences. Unlike more traditional advisory groups and committees, CARE members will be compensated for their work.

Learn more at www.cmap.is/communityalliance.

12

FOCUS ON CLIMATE

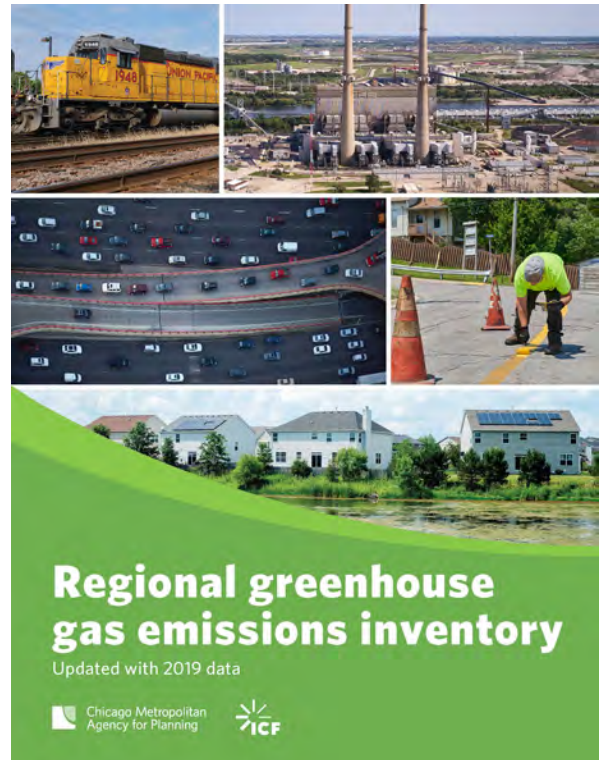
Goal: A region that takes action to mitigate and adapt to the effects of climate change and preserve high-quality water resources

Helping our region reduce greenhouse gas emissions through data and analysis

In 2022, the IJJA authorized a new Carbon Reduction program to help states develop strategies to reduce transportation emissions and address the climate crisis. These efforts also aim to reduce congestion by promoting mass transit alternatives. IJJA also provides historic funding to help our region invest in clean, climate-smart, safe, and more resilient transportation solutions with a focus on equity. CMAP continues to focus on one of the biggest challenges facing the region: reducing its greenhouse gas emissions.

Our region is making progress toward reducing greenhouse gas (GHG) emissions but accelerated action is necessary if we are going to meet the region's goals as outlined in ON TO 2050. For the first time, municipalities and Chicago neighborhoods have localized data to take action. CMAP's GHG data snapshots share emissions from the building, transportation, and waste sectors. Local governments, sustainability committees, and others are encouraged to use this information to develop local climate action plans.

Learn more at www.cmap.is/ghg-inventory



CMAP is also working with partners on advancing widespread adoption of low and zero-emission vehicles and exploring the implementation of an equitable charging network for electric vehicles.



Photo Credit: Illinois Department of Transportation

FOCUS ON REGIONAL ECONOMIC COMPETITIVENESS

Goal: A robust and inclusive regional economy

Region comes together to create historic partnership for economic development

The COVID-19 pandemic exacerbated long-standing challenges in the region's economy. But the crisis also created an opportunity: to more intentionally build back the region and support stronger, more inclusive economic growth.

In November 2020, CMAP embarked on this work at the request of the region's seven county board chairs and the City of Chicago's COVID-19 Recovery Task Force. CMAP, supported by a grant from the Searle Funds at The Chicago Community Trust, partnered with the Brookings Institution — a nonprofit public policy organization — and brought together regional leaders to develop a shared regional framework for equitable economic development.



Greater Chicagoland Economic Partnership

The result is the Greater Chicagoland Economic Partnership, a first-of-its-kind collaboration among the seven counties of northeastern Illinois and the City of Chicago to drive inclusive economic growth and advance equity across the region.

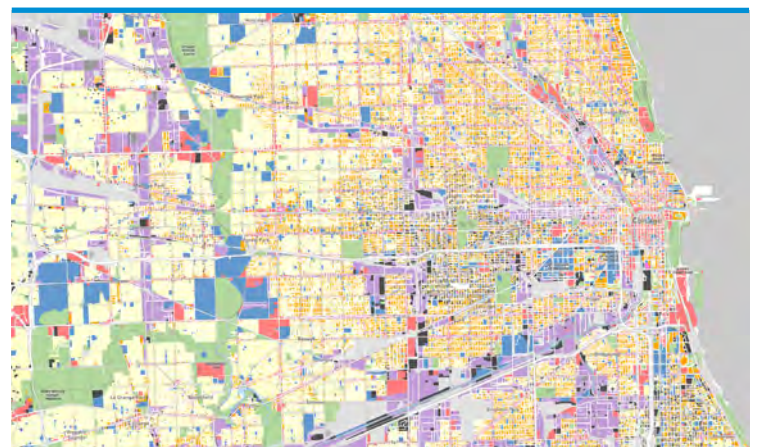
The Partnership is made up of economic development leaders across the public, private, and civic sectors committed to promoting the region's many assets, including extensive freight infrastructure, diverse talent, strong exporting industries, and world-class institutions of innovation, research, and culture to develop a competitive global identity. The City of Chicago and county partners have together made a financial commitment totaling \$1 million for the first in a three-year pilot. CMAP will continue to support regional economic development efforts going forward.

Learn more at www.cmap.is/economic-partnership

Updated Land Use Inventory gives clearer view of current conditions

As the region's primary data source, government and transportation agencies, researchers, planners, and consultants turn to CMAP for consistent, high-quality land use data to plan and implement local transportation improvements and other investments. It provides valuable insights into land use changes that can have effects on air and water quality, watershed function, generation of waste, extent and quality of wildlife habitat, climate, and human health.

The current data is from the 2018 survey and production on the 2020 inventory is underway, with completion anticipated in late 2024.



CMAP offers data, analysis, modeling, and other resources that can help you create plans and policies to strengthen your community. Find this land use inventory, snapshot data of your community, and more, at cmap.illinois.gov/data.

FOCUS ON ENGAGEMENT

Network connects local governments with CMAP

The Local Government Network pairs each of the region's 284 municipalities and seven counties with a CMAP liaison, who establishes a relationship with the communities. The liaisons distribute priority information, build awareness of available resources, and route on-demand partner questions to CMAP subject matter experts. In 2022, CMAP conducted five outreach initiatives through the local government network, boosting participation in ADA training and the Call for Local Technical Assistance Projects.

Empowering future leaders in planning

CMAP welcomed twenty high school students for the 14th year of the Future Leaders in Planning (FLIP) program to explore the field of planning and how planning shapes the region's communities. The program paired a rich, interactive curriculum with guest speakers and field trips to The Hatchery in Garfield Park and Chicago's Chinatown to meet the planners and changemakers in those communities. FLIP is free and provides lunch and public transportation to high school participants.



Future Leaders In Planning (FLIP) 2022

As a result, we aim to retain employees, improve employee satisfaction, morale, and performance levels, encourage team-building, break down silos, provide a welcoming and inclusive work environment, and promote collaboration, as well as empower our staff to center equity in their work to help the region.

2022 SNAPSHOT

- 28 Executive director speaking engagements
- 6 Leadership meetings with County Board chairs to coordinate as a region
- 4 Convenings to benefit as a region from IJJA opportunities
- 30 Newsletters sent in 2022
- 25k+ Subscribers to CMAP Update
- 661k+ Total impressions across social media platforms

Prioritizing our people and culture

CMAP continues to place a high priority on organizational culture and supporting our excellent team.

We prioritized professional development of our talented staff by instituting a career framework system that includes tools to guide each team member's skill and career growth. We promote and invest in training opportunities and professional development. We are improving operational systems, including a new payroll system.

We remain focused on strategic internal communications and engagement, and developing and implementing diversity, equity, and inclusion strategies.

CONNECT WITH US



CMAP's newsletters

Subscribe to CMAP's newsletters to get updates about transportation, accessibility, climate, and economy. Scan this QR code.

@cmapillinois |    

Collar county appointments

Matthew Brolley

President, Village of Montgomery
(Kane/Kendall)

James Healy

Former member, DuPage
County Board (DuPage)

John Noak

Mayor, Village of Romeoville (Will)

Nancy Rotering

Mayor, City of Highland Park (Lake)

Carolyn Schofield

Member, McHenry County Board (McHenry)

Non-voting members

Abolfazl (Kouros) Mohammadian

PhD, professor and department head, Civil,
Materials, and Environmental Engineering,
University of Illinois at Chicago

Leanne Redden

Executive director, Regional Transportation
Authority (MPO Policy Committee)

The Chicago Metropolitan Agency for Planning (CMAP) is the region's comprehensive planning organization. The agency and its partners developed and are now implementing ON TO 2050, a long-range plan to help the seven counties and 284 communities of northeastern Illinois implement strategies that address transportation, housing, economic development, open space, the environment, and other quality-of-life issues.

See cmap.illinois.gov for more information.

City of Chicago appointments

Frank Beal

Senior executive, Civic Consulting Alliance

Paul Goodrich

Chief operating officer, City of Chicago

Nina Idemudia

Assistant commissioner, Department of
Planning and Development, City of Chicago

Stefan Schaffer

City strategist, American Cities Climate
Challenge, Natural Resources Defense Council

Anne Sheahan

Executive vice president of business affairs,
HNTB Corporation

Cook County appointments

Gerald Bennett

Mayor, Palos Hills (Southwest Cook)

Karen Darch

Village president, Village of Barrington
(Northwest Cook)

Richard Reinbold

President, Village of Richton Park (South Cook)

Matthew Walsh

Former trustee, Indian Head Park (West Cook)

Diane Williams

Former trustee, Village of Flossmoor,
(Suburban Cook)

433 West Van Buren Street
Suite 450
Chicago, IL 60607

