




---

---

---

---

---

---

---

---

**THE RTA DOES THAT**

Thirty years of leadership providing a holistic view for the region

- **Responsibilities**
  - Ensure balanced budgets for CTA, Metra and Pace
  - Provide customer services
  - Develop and implement a regional strategic plan for transit that promotes transit and insures the financial viability of the system

---

---

---

---

---

---

---

---

**RTA OVERSEES THAT**

651 MILLION RIDERS IN 2013: AVERAGE 2 MILLION EACH WORKDAY

Passenger Trips					
	CTA	Metra	Pace	Pace ADA	System
Annual Rides	529.2	82.3	35.9	4.0	651.4
Percentage of Total	81%	13%	5%	1%	100%

---

---

---

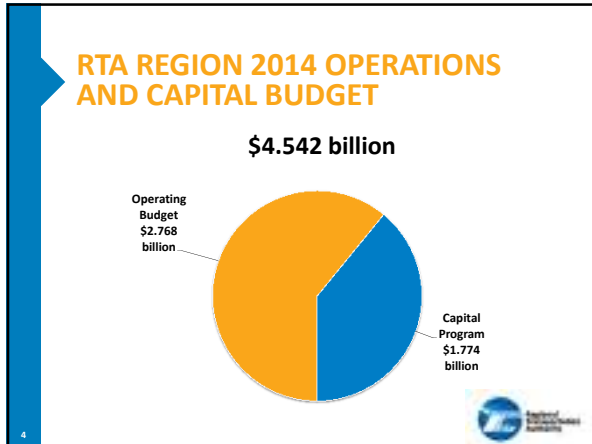
---

---

---

---

---



---

---

---

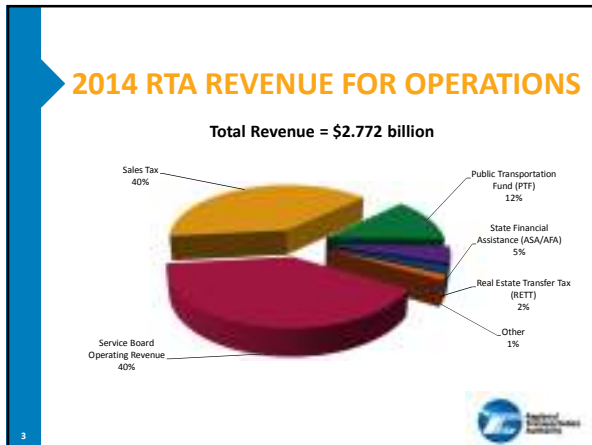
---

---

---

---

---



---

---

---

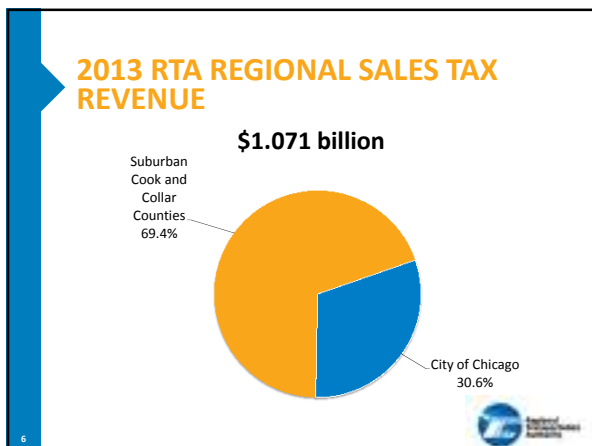
---

---

---

---

---



---

---

---

---

---

---

---

---

### PROTECTING RTA SALES TAX BASE



7

---

---

---

---

---

---

---

---

### RTA CAPITAL ASSET CONDITION ASSESSMENT (ALL SERVICE BOARDS)

**2013 Results**

Backlog	\$ 20.0 B
Normal Replacement	8.0 B
Rehabs	4.4 B
Capital Maintenance	1.0 B
<b>Total Needs</b>	<b>\$ 33.4 B</b>



8

---

---

---

---

---

---

---

---



### GETTING AMERICA TO WORK

#### What can you do?

- **Show your support by:**
  - Encouraging your organization to join the *Getting America to Work* coalition
  - Declaring your support individually at [www.GettingAmericaToWork.com](http://www.GettingAmericaToWork.com)
- **Contact your member of Congress**
  - Tell them why a vital transit system is important to you
  - Tell them you support increased federal funding for transit and its economic benefits

9




---

---

---

---

---

---

---

---

### RTA DOES THAT: CUSTOMER SERVICES



- Travel Training Programs
- Transit Benefit Program
- ADA Paratransit Certification Program
- The RTA Travel Information Center
- Only REGIONAL consolidated Trip Planner
- Customer Service Center serves Reduced Fare and Ride Free programs.



10

---

---

---

---

---

---

---

---

### MOVING FORWARD: STRATEGIC PLAN

Identifies key actions that RTA, CTA, Metra and Pace need to take to achieve four primary goals:

- Provide valuable, reliable, accessible and attractive transportation options;
- Ensure financial viability of the transit system;
- Promote a green, livable and prosperous region; and
- Continue to be advocates for, and trusted stewards of, public transportation.



11

---

---

---

---

---

---

---

---

### REGIONAL TRANSIT INFORMATION RESOURCE INFORMATION SOURCE



[www.rtams.org](http://www.rtams.org)



12

---

---

---

---

---

---

---

---

## MOVING FORWARD: PLANNING STUDIES

### Orland Park 143<sup>rd</sup> Street Station

- \$50,000 TOD Plan completed in 2000
- \$3 million new Station open in April 2007
- LaGrange Road Streetscape Improvements
- Ninety 7 Fifty PPP



13

---

---

---

---

---

---

---

---

## MOVING FORWARD: CAPITAL PROJECTS

### CTA & Pace Real Time Signage on Shelters

- Allocated \$2.5 million in Funding
- CTA Implementation began in October 2011 (150 signs installed)
- Pace Implementation beginning later this year



14

---

---

---

---

---

---

---

---

## MOVING FORWARD: BUILDING RIDERSHIP

### Willow Road Shuttle Bug

- \$90,000 in JARC Funding
- Reverse Commute
- Service began in August 2013
- 67 riders/weekday



15

---

---

---

---

---

---

---

---

### TRANSIT TASK FORCE: WHAT DOES THE FUTURE HOLD?



1. Perpetuate the existing system.
2. Consolidate all 4 transit agencies.
3. Give RTA the tools to perform its mission.



16

---

---

---

---

---

---

---

---



### QUESTIONS & COMMENTS

Leanne Redden  
Acting Executive Director  
[ReddenL@rtachicago.org](mailto:ReddenL@rtachicago.org)



17

---

---

---

---

---

---

---

---