

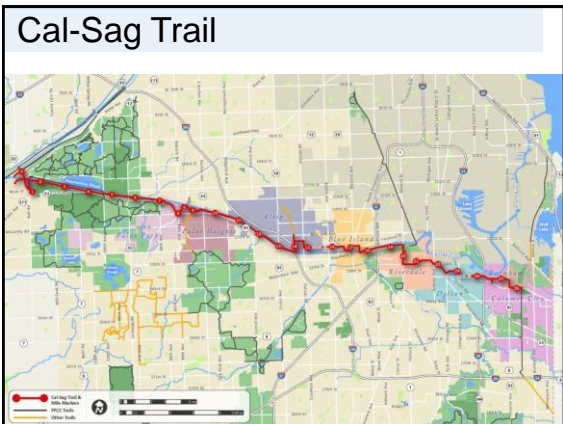
Cal-Sag Trail



Agencies

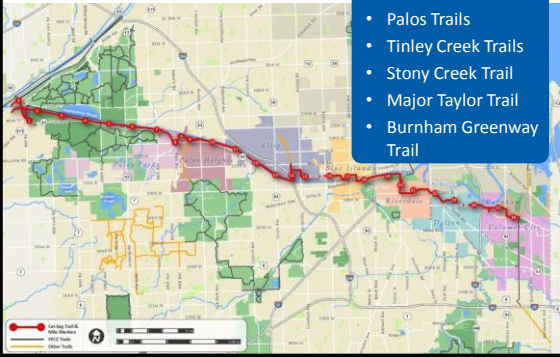


Cal-Sag Trail

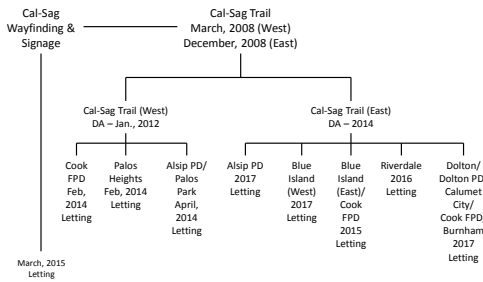


Connections

- Centennial Trail
- I&M Canal Trail
- Palos Trails
- Tinley Creek Trails
- Stony Creek Trail
- Major Taylor Trail
- Burnham Greenway Trail



Project Segments



IL 83 to Southwest Highway



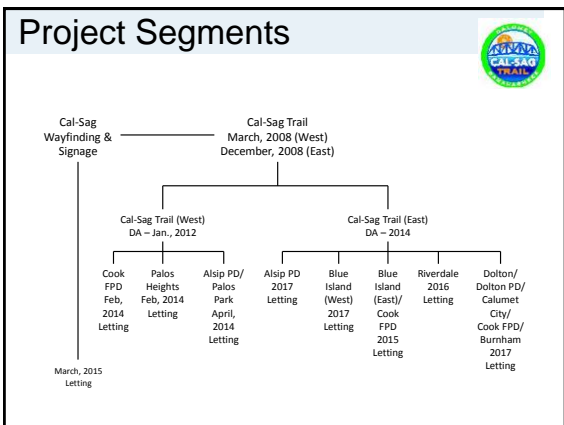












Kedzie Avenue to Indiana Avenue



Indiana Avenue to Burnham Greenway

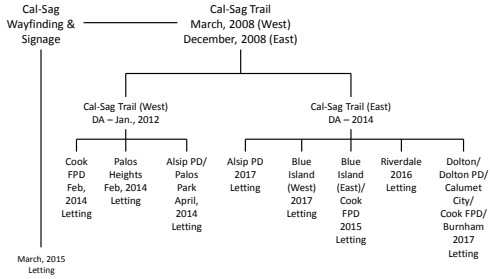


Project Tracking/Funding

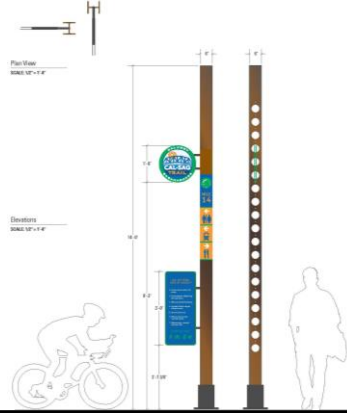
Project Title	Agency	Start Year	End Year	Est. Cost	Fund Source	Current Status
1. Kedzie Avenue to Indiana Avenue	Cook FPD	2014	2015	\$1,500,000	State	Planning
2. Indiana Avenue to Burnham Greenway	Cook FPD	2014	2015	\$1,500,000	State	Planning
3. Burnham Greenway	Cook FPD	2014	2015	\$1,500,000	State	Planning

Agency	Cook FPD	Cook FPD	Public Park	At&P Park District
Project Description	1. 85 to 86th Avenue Stationing: 130+00 to 42+70.5 Length (Main Trk, Spurs): 1373' / 1875'	2. 86th Avenue Stationing: 42+70.5 to 42+00-00 Length (Main Trk, Spurs): 1373' / 1875'	3. 86th Avenue to South West Way Stationing: 414+00 to 449+05 Length: 355'	East end of Tenny College to Church Road Stationing: 743+00 to 1075+13.5 Length: 332.5'
Phase 2 Est. Cost	\$ 4,116,900	\$ 1,021,330	\$ 963,900	
Phase 3 Engineering Cost	\$ 137,400	\$ 99,700	\$ 88,300	
Land Acq. Cost	\$	\$ 7,800	\$	
Construction	\$ 13 F 9000 25.5T	\$ 11 F 9000 08.0T	\$	
Project No.	TE 0005(0943)		MMM TE 0003(0515)	
Job No.	C 91 652 14	C 91 219 53		
Contract No.	0900	0804		
Available CMAQ Funds	\$	\$	\$ 6,380	
Available FTA Funds	\$	\$ 3,000,000	\$ 376,000	\$ 1,031,750
Available FTA Funds for ROW	\$	\$ 2,000,000	\$	\$
Available FTA Funds for Construction/PA	\$	\$ 900,000	\$	\$
Anticipated Start	12/28/2014	4/7/2014		
Contract Value	\$ 4,461,400	\$ 1,121,030	\$ 1,052,200	\$ 1,070,000

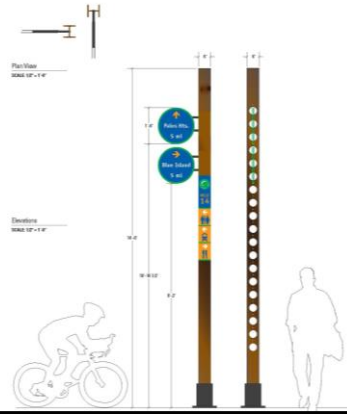
Project Segments



Signage & Wayfinding-Signage Suite



Signage & Wayfinding-Signage Suite



Next Steps



- Complete construction from IL 83 to Cicero
- Complete Chatham Street Bridge Inspection
- Receive Design Approval for East End
- Begin Phase 2 Plan Preparation for East End Construction Segments early 2015
