

**rain  
ready**

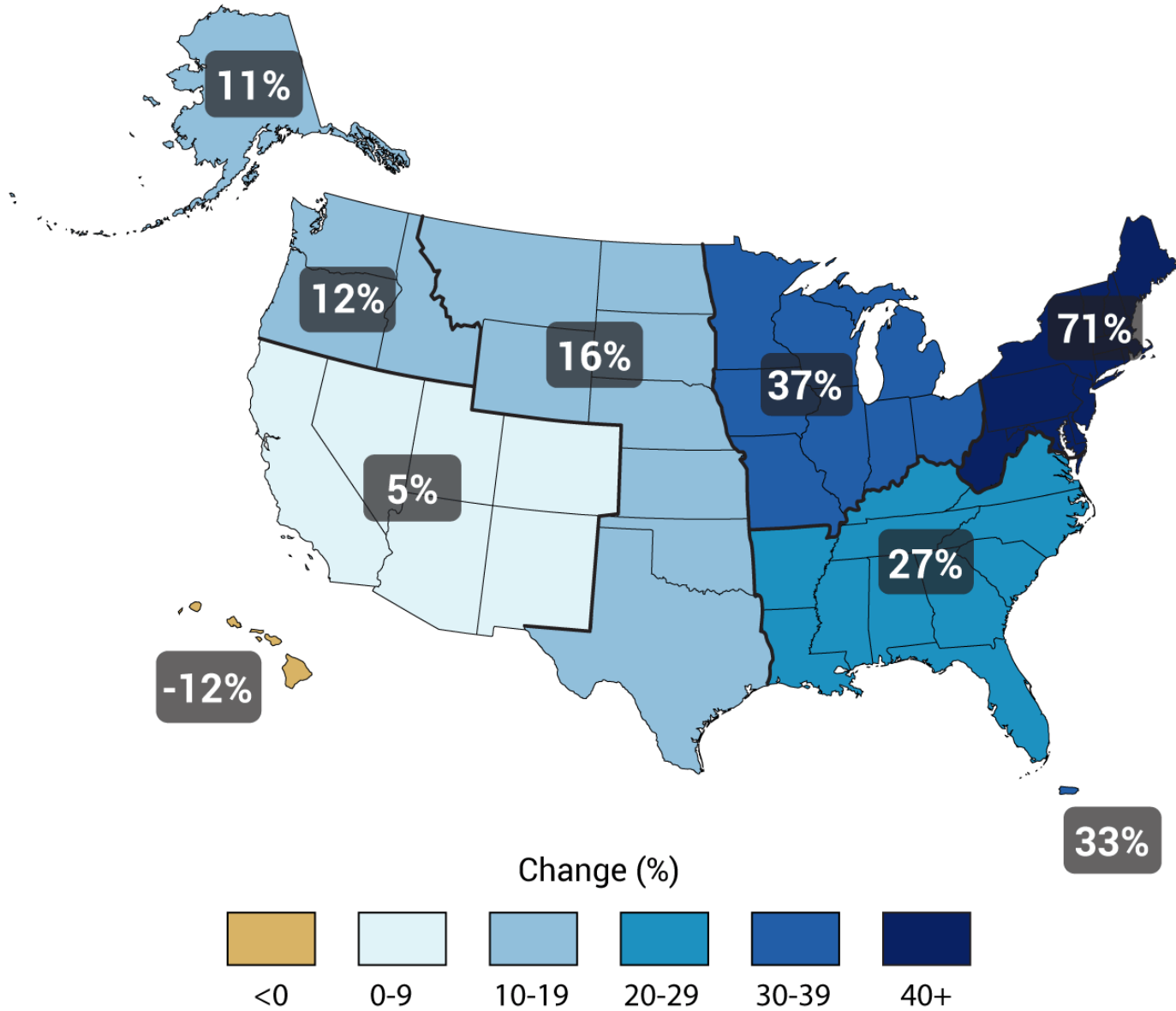
A bright yellow umbrella is positioned behind the text. The top of the umbrella is behind the word 'rain', and the handle and lower part of the canopy are behind the word 'ready'. The umbrella is a simple, solid-colored silhouette.

# APPROACH



- Replicable model
- Diverse partnerships
- Citizen-centered – voice of flood victims
- Community-wide + integrated

# Observed Change in Very Heavy Precipitation











A photograph of a flooded residential street. In the foreground, a dark grey Honda Accord is partially submerged in water. Several workers wearing bright orange safety gear and hard hats are wading through the floodwater. A man in a dark jacket and cap stands near a black trash bin on the left. The background shows houses, trees, and utility poles. A semi-transparent dark banner with the text "APRIL 2013" is overlaid across the middle of the image.

**APRIL 2013**

















STATE FARM INSURANCE

ADJUSTING CO.

RESTORATION

14701

















# RESEARCH

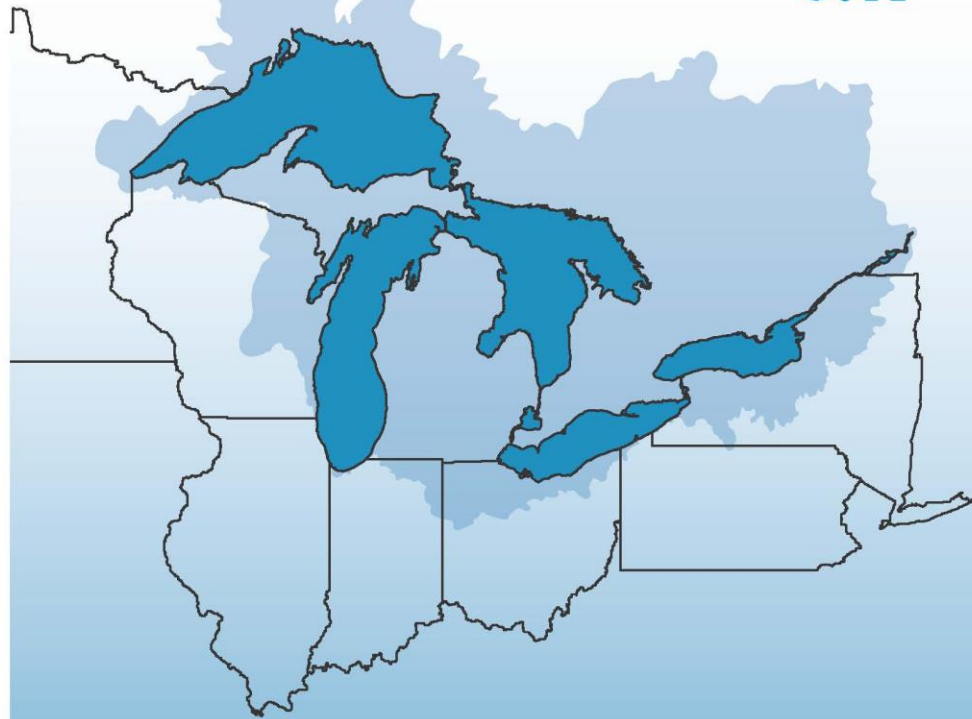






# FLOODING IN MAJOR U.S. CITIES

Flash flooding warning: “imminent” or “in progress”  
between 2007-11 in the counties of 10 major U.S. cities.

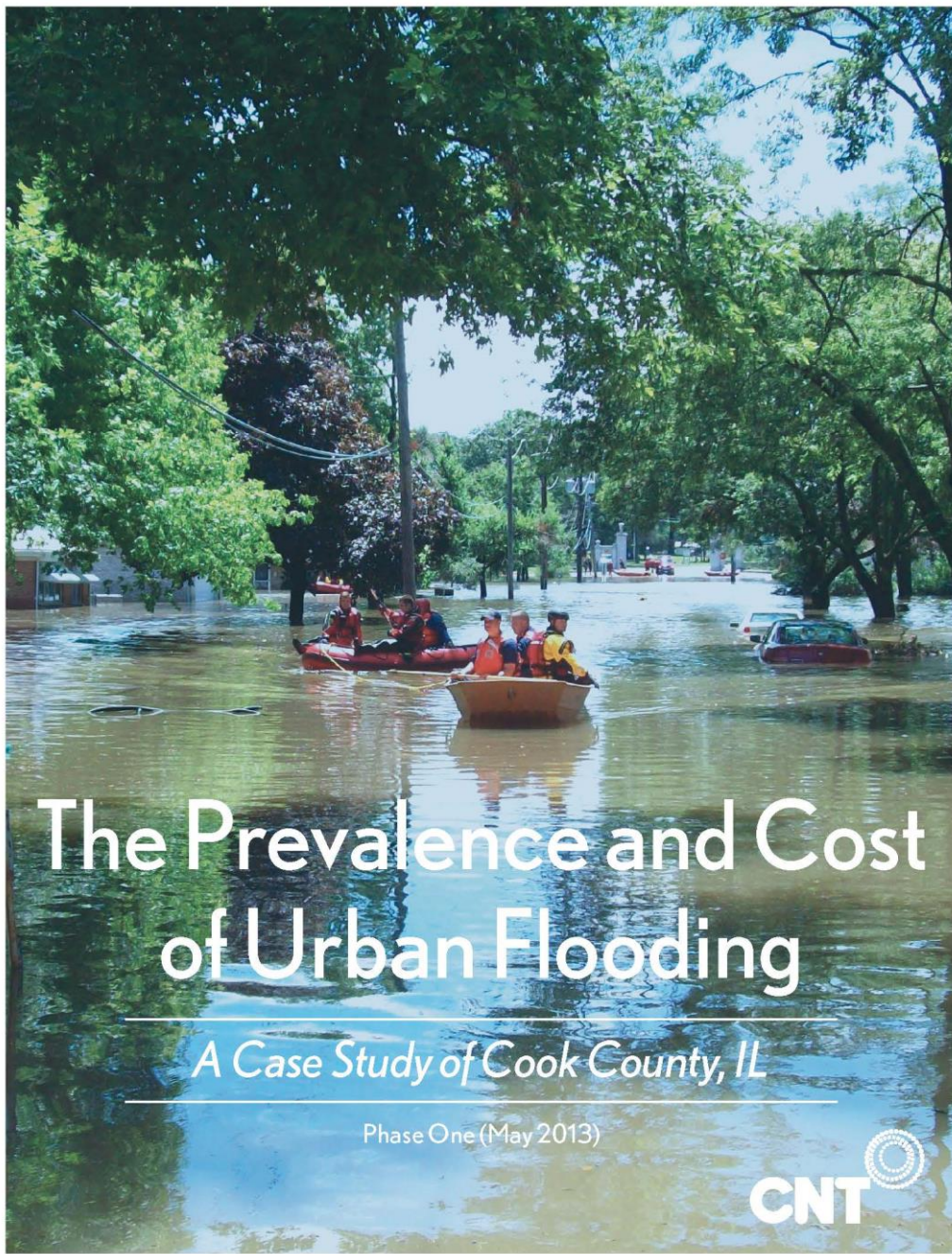


# Urban Flooding in the Great Lakes States

*A Municipality/Utility Survey Report*







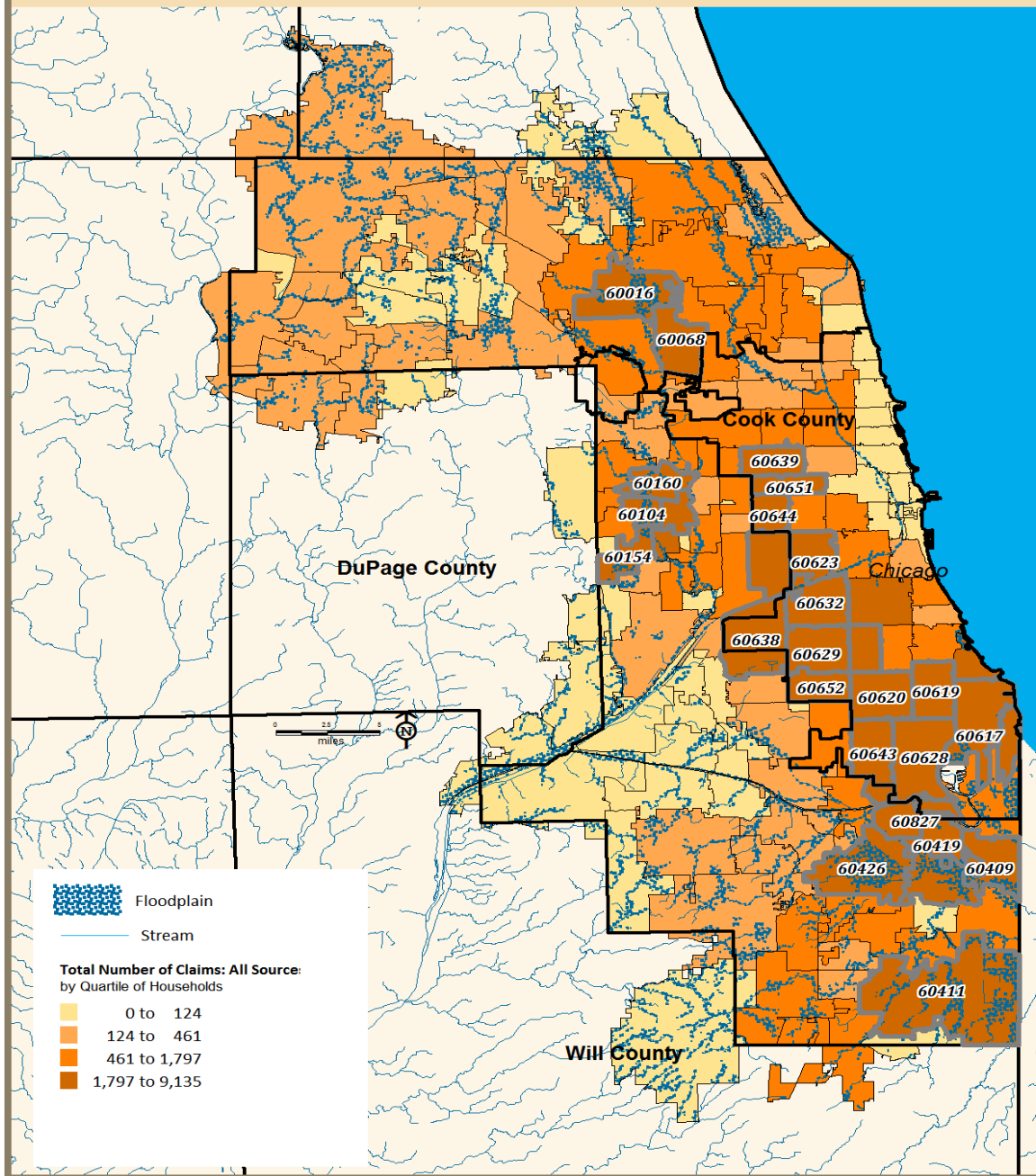
# The Prevalence and Cost of Urban Flooding

*A Case Study of Cook County, IL*

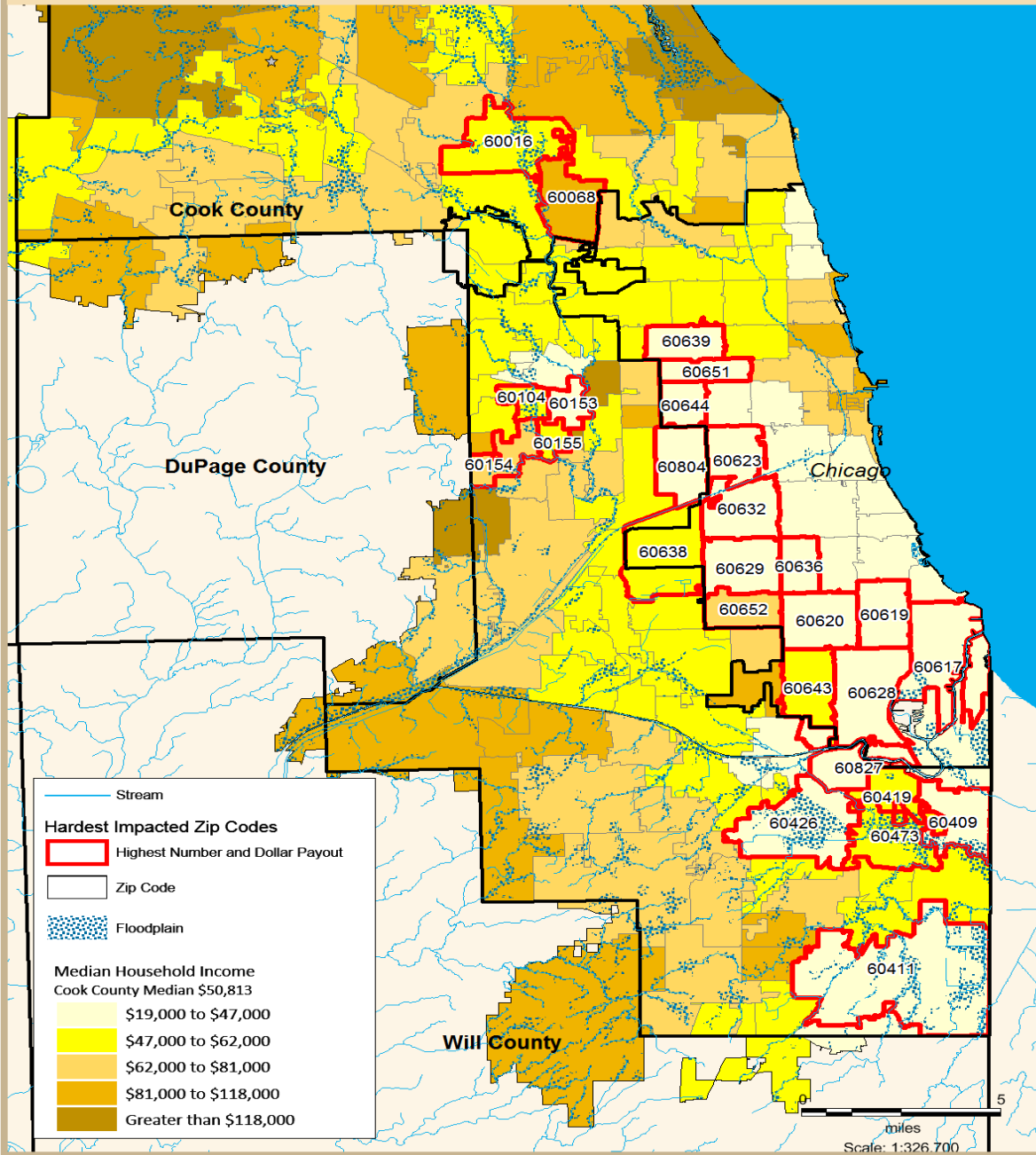
Phase One (May 2013)



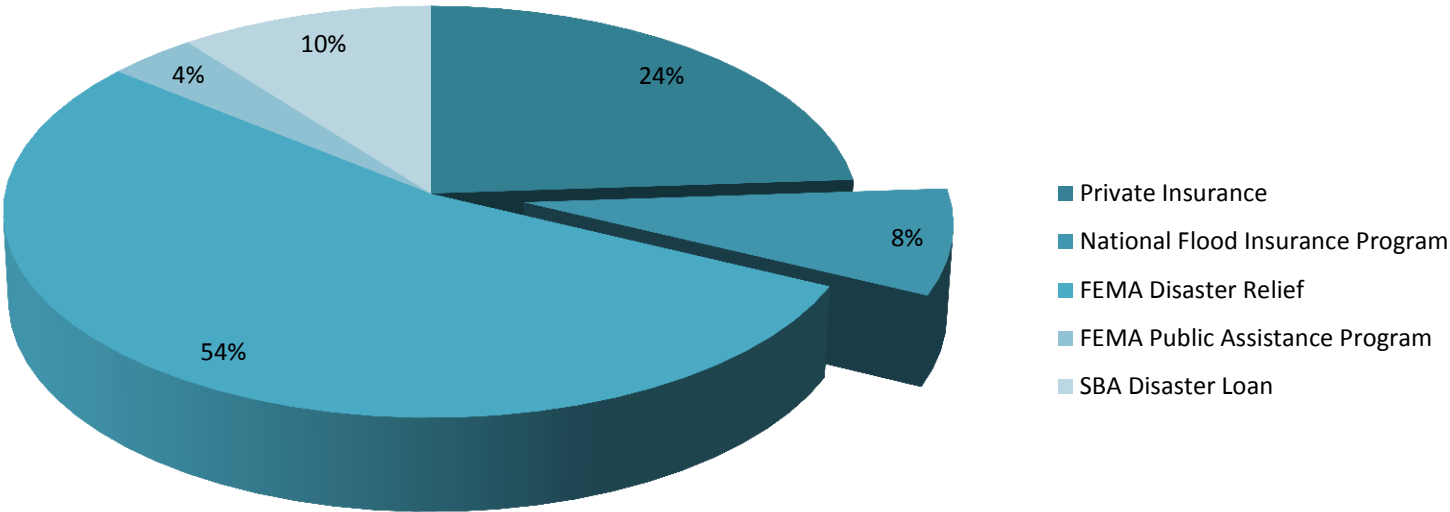
Total Combined Payout: Private Insurance, National Flood Insurance Policy, Disaster Relief Assistance



# Median Income and Highest Concentrated Damage



# Percentage of Aggregated Flood Payouts by Payer







# Urban flooding



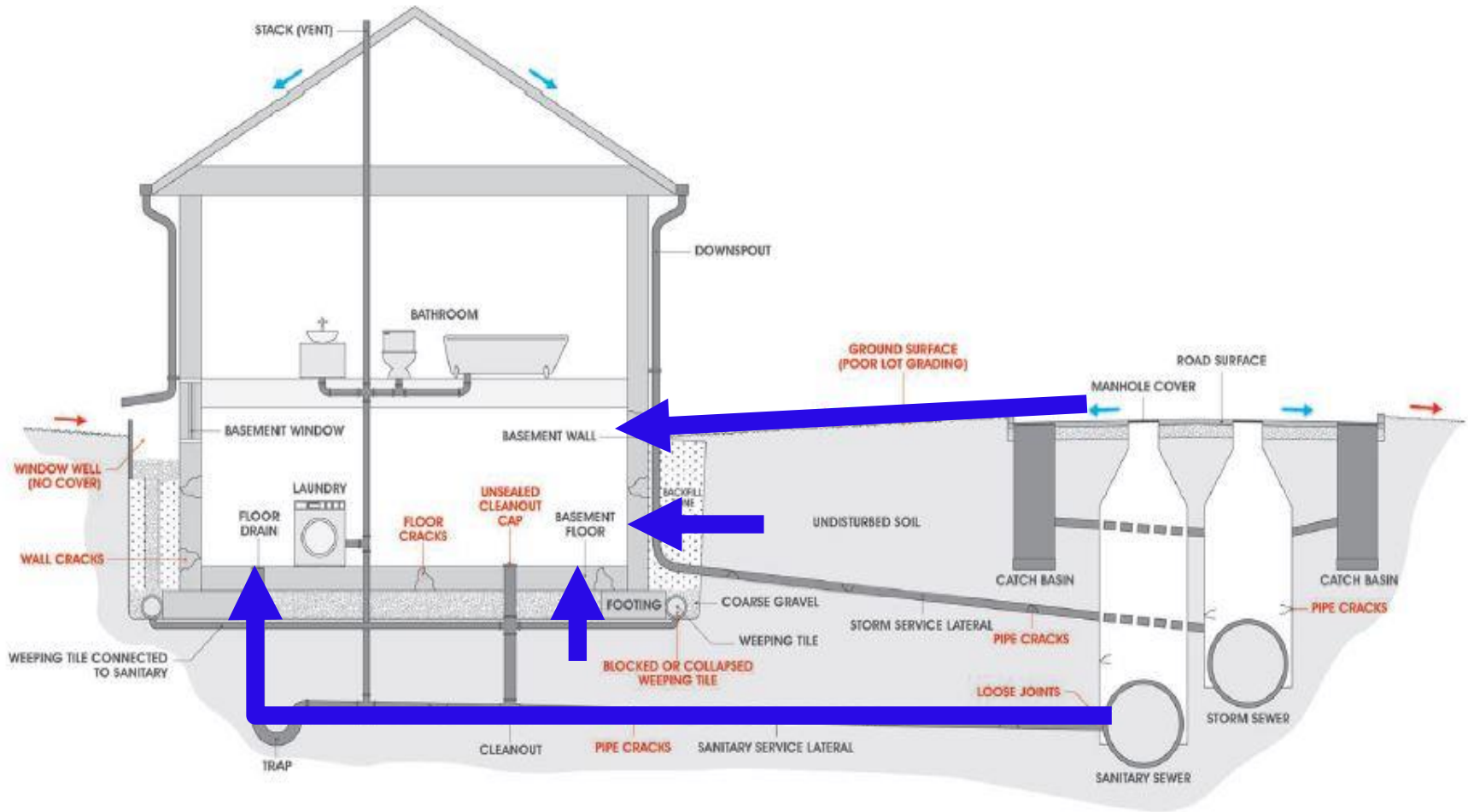




# Defined

The inundation of property in a built environment, caused by rainfall overwhelming the capacity of drainage systems

# The many ways that water can enter your home...







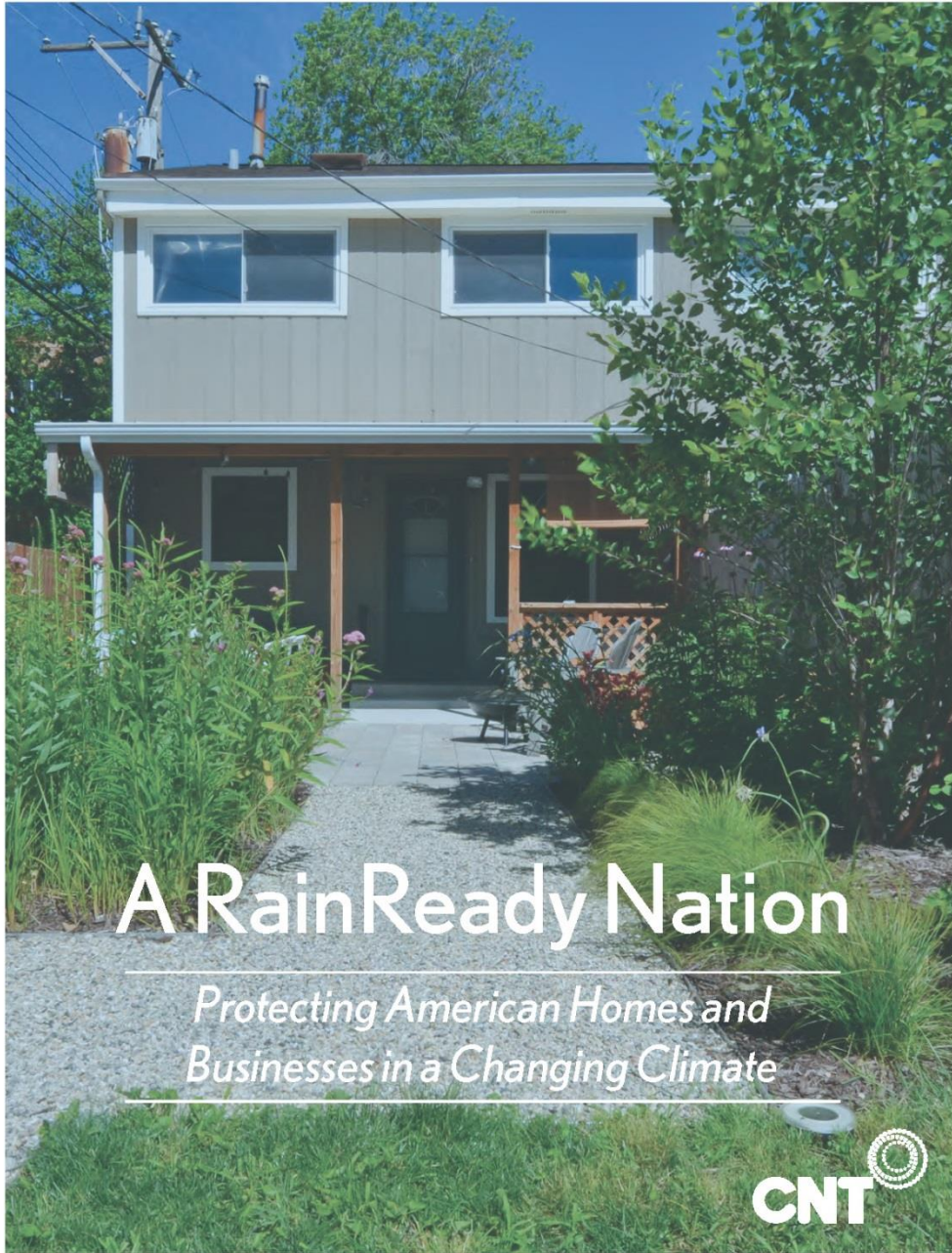
# KEY FINDINGS



# A GROWING CRISIS

- Problem that is **private + hidden** from public view
- **Prevalent, widespread + repetitive**
- **Chronic impacts:** raw sewage, mold, foundation cracks, stress
- Evidence: **foreclosures, businesses re-locating**
- **Low income communities** worst affected and most vulnerable



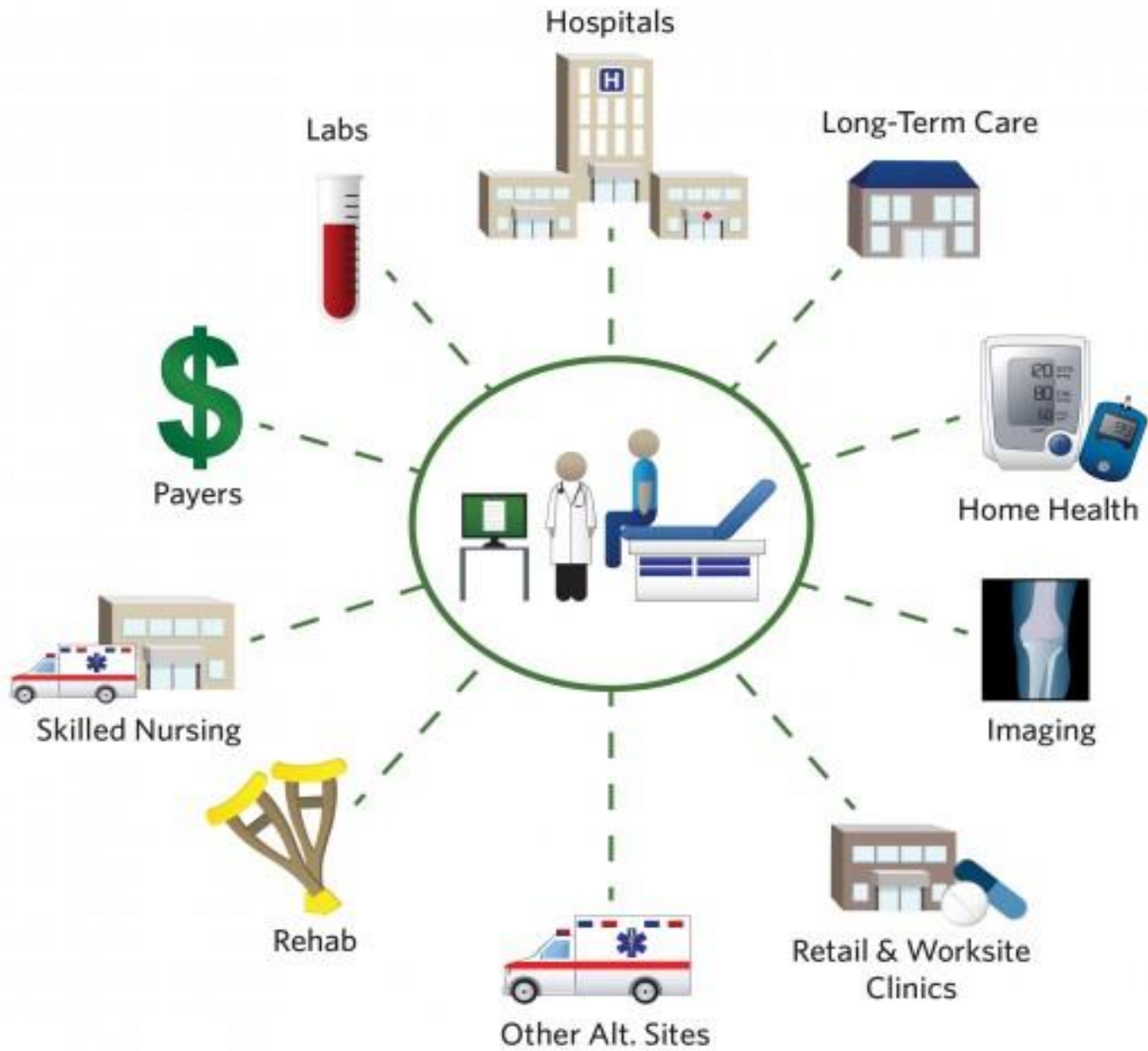


# A RainReady Nation

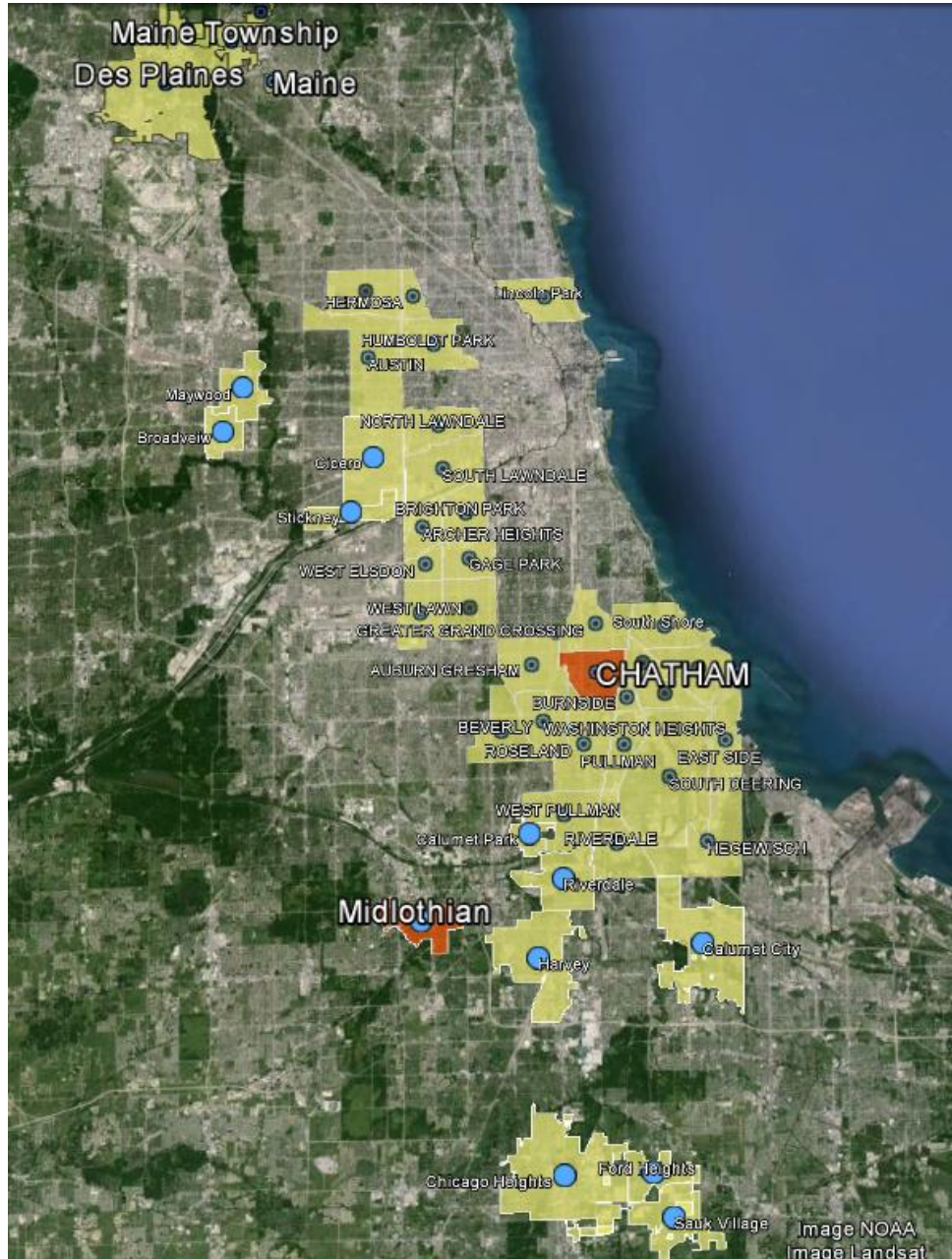
*Protecting American Homes and  
Businesses in a Changing Climate*

**CNT** 

**CNT** 









# RAINREADY COMMUNITY



























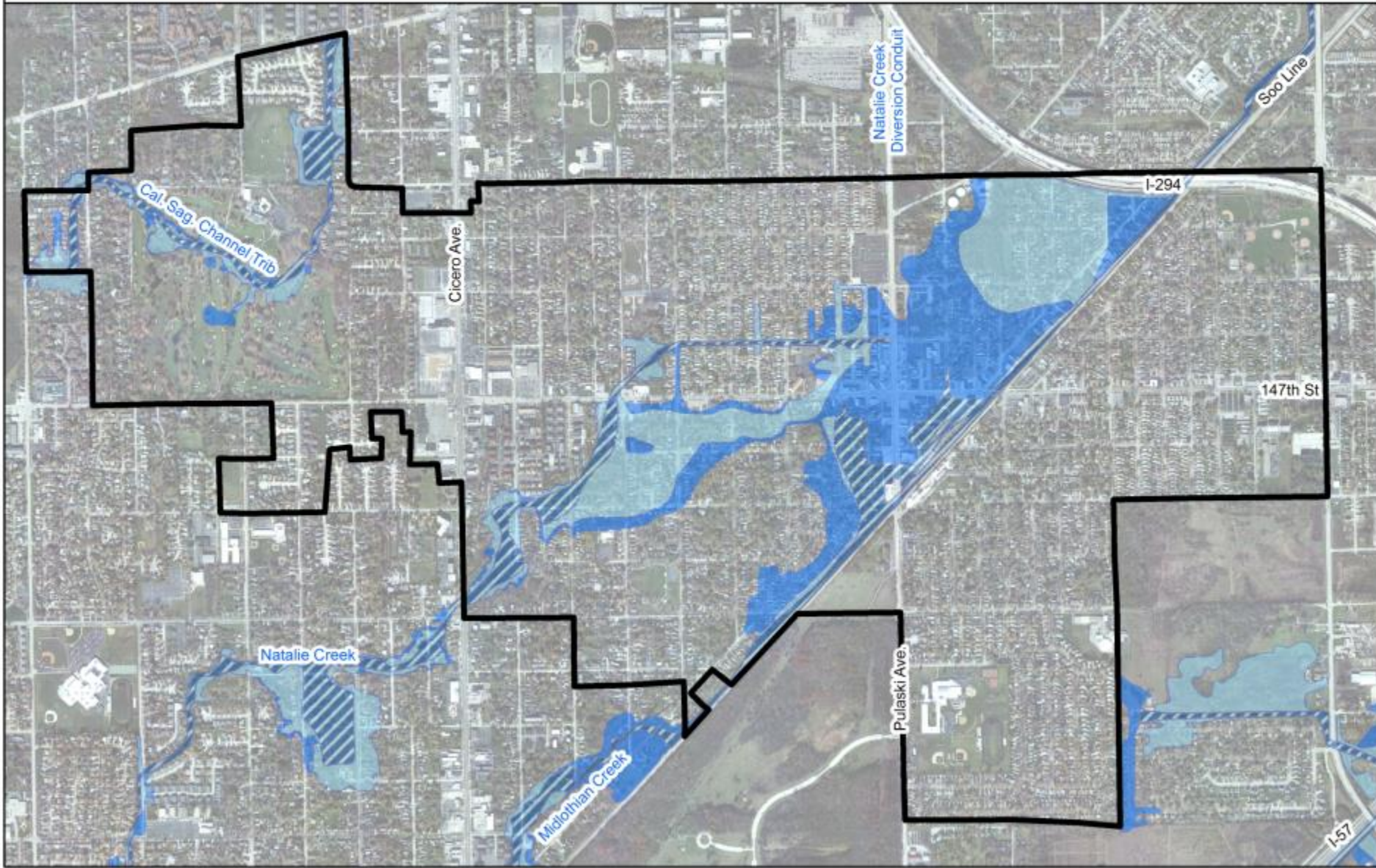
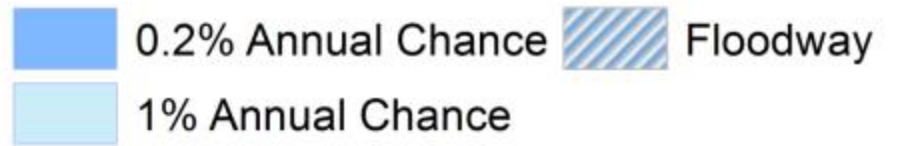








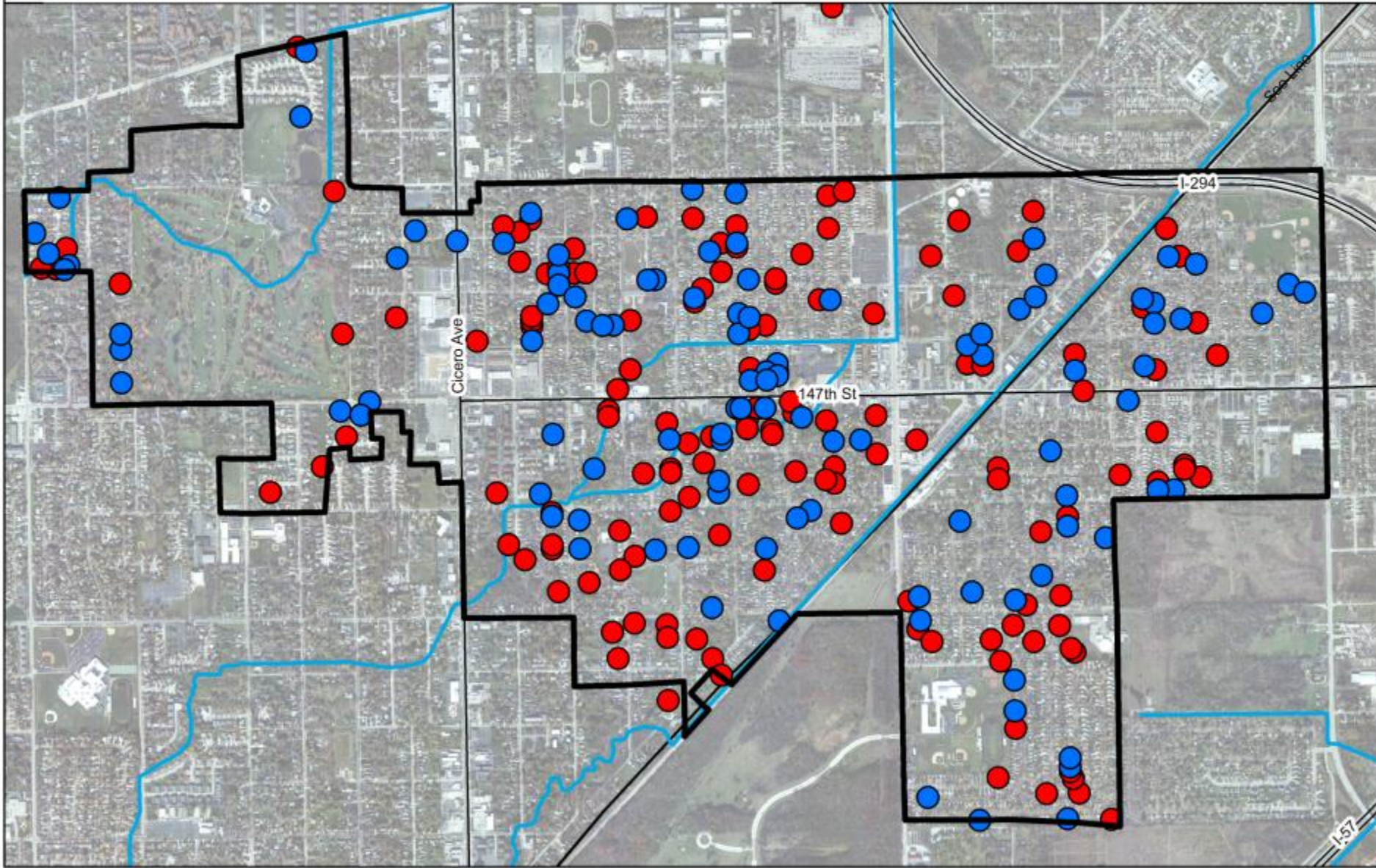
# FEMA Floodplain





# Do you experience flooding?

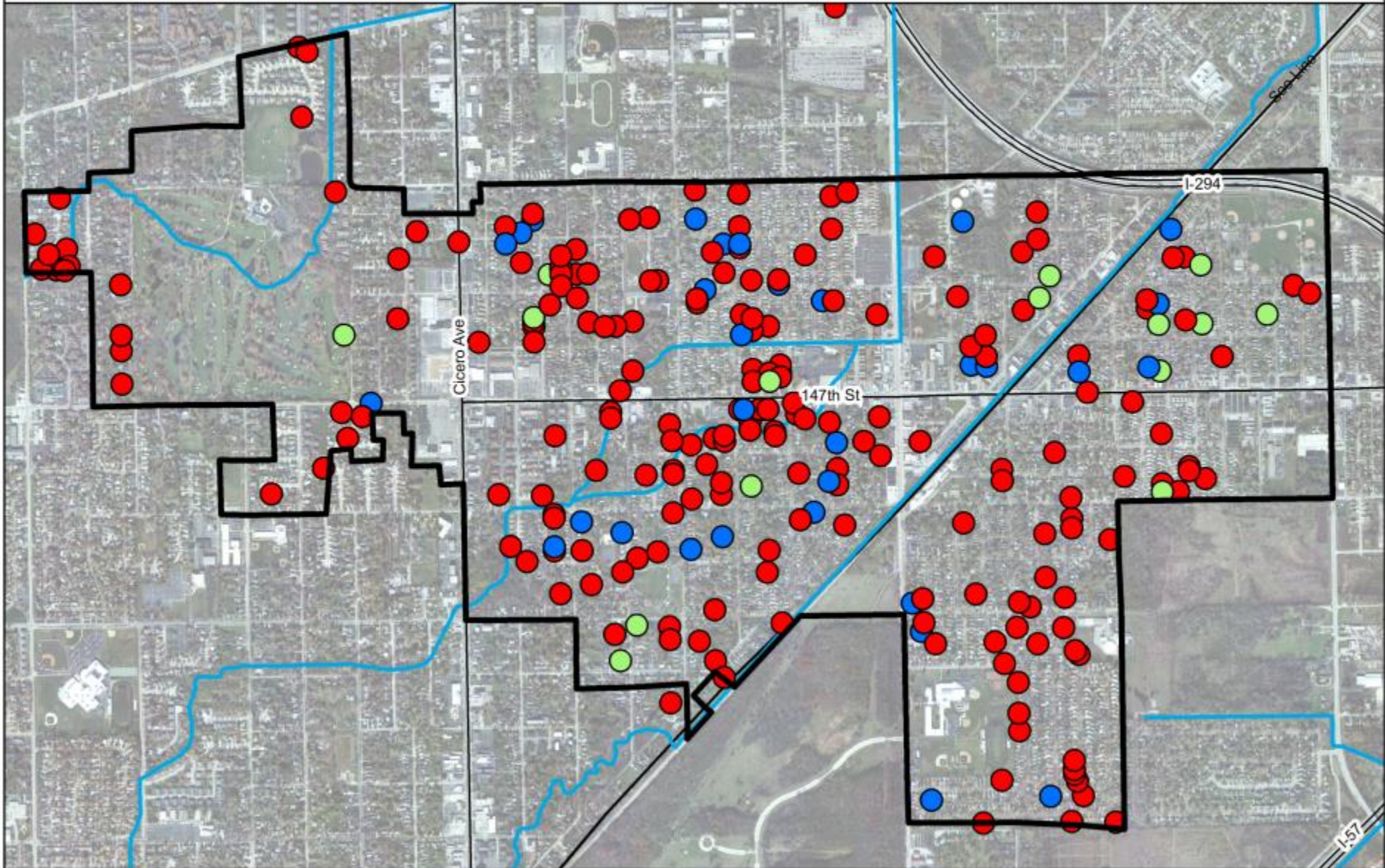
● Yes - 57%   ● No - 43%





# I am concerned about water-related problems on my property?

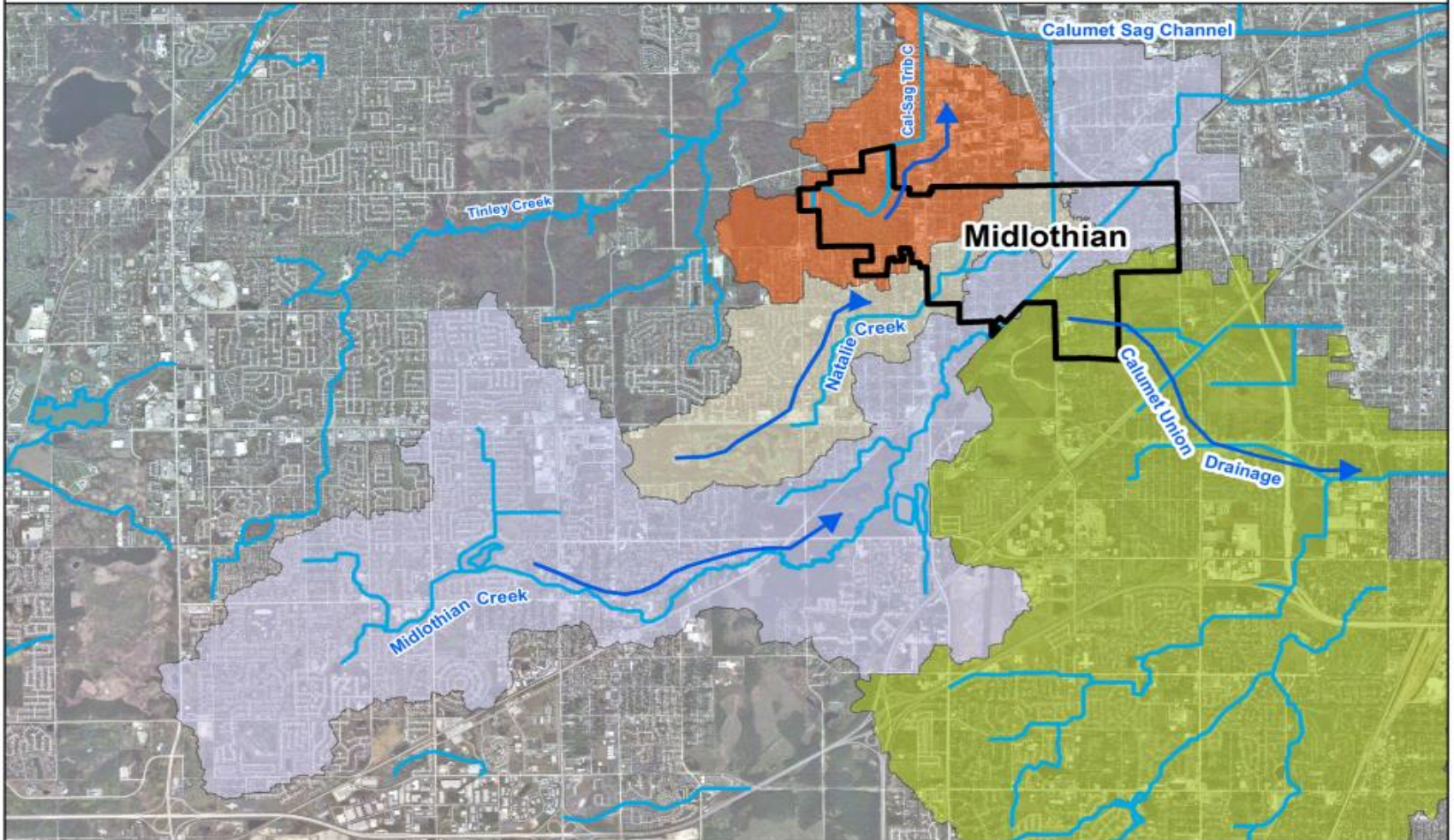
● Yes - 81%   ● No - 12%   ● I don't know - 6%





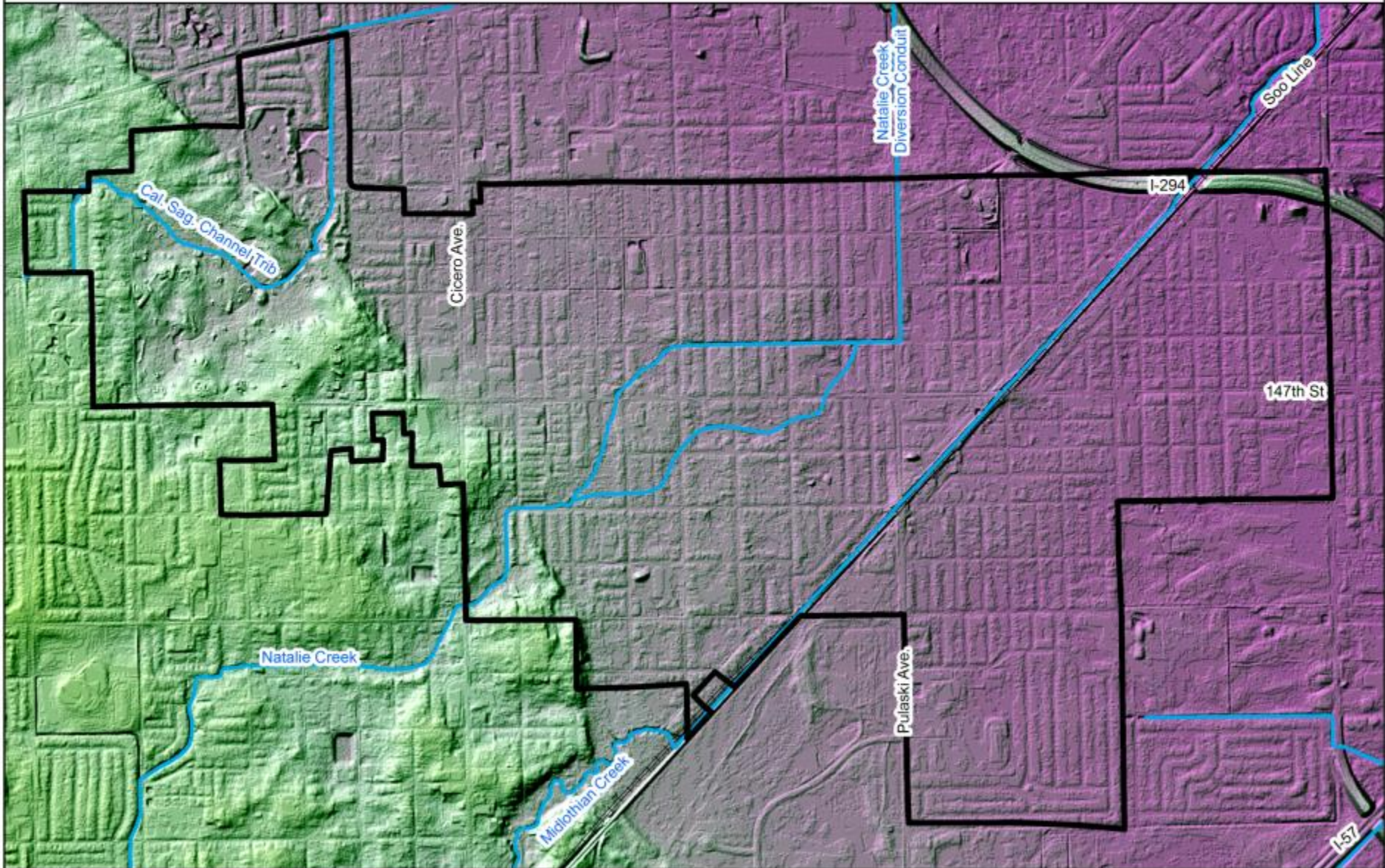
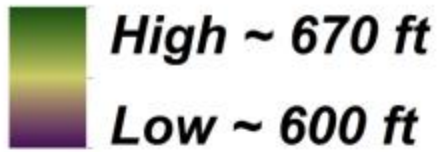
# Village of Midlothian Watersheds

Midlothian Creek    Natalie Creek    Cal-Sag Trib C    Calumet Union Drainage





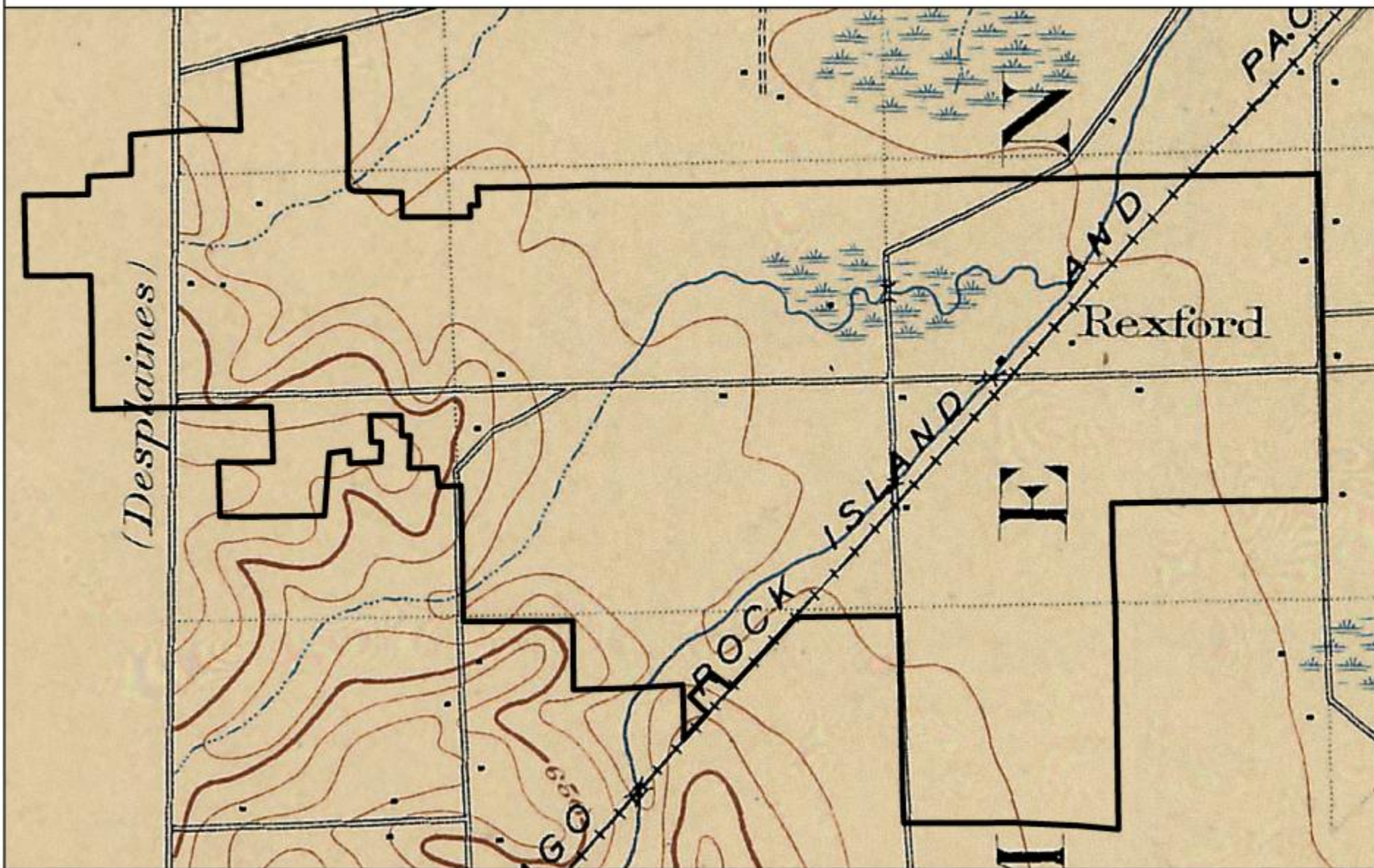
# Elevation





# USGS Quad Map - 1901

10 foot contours

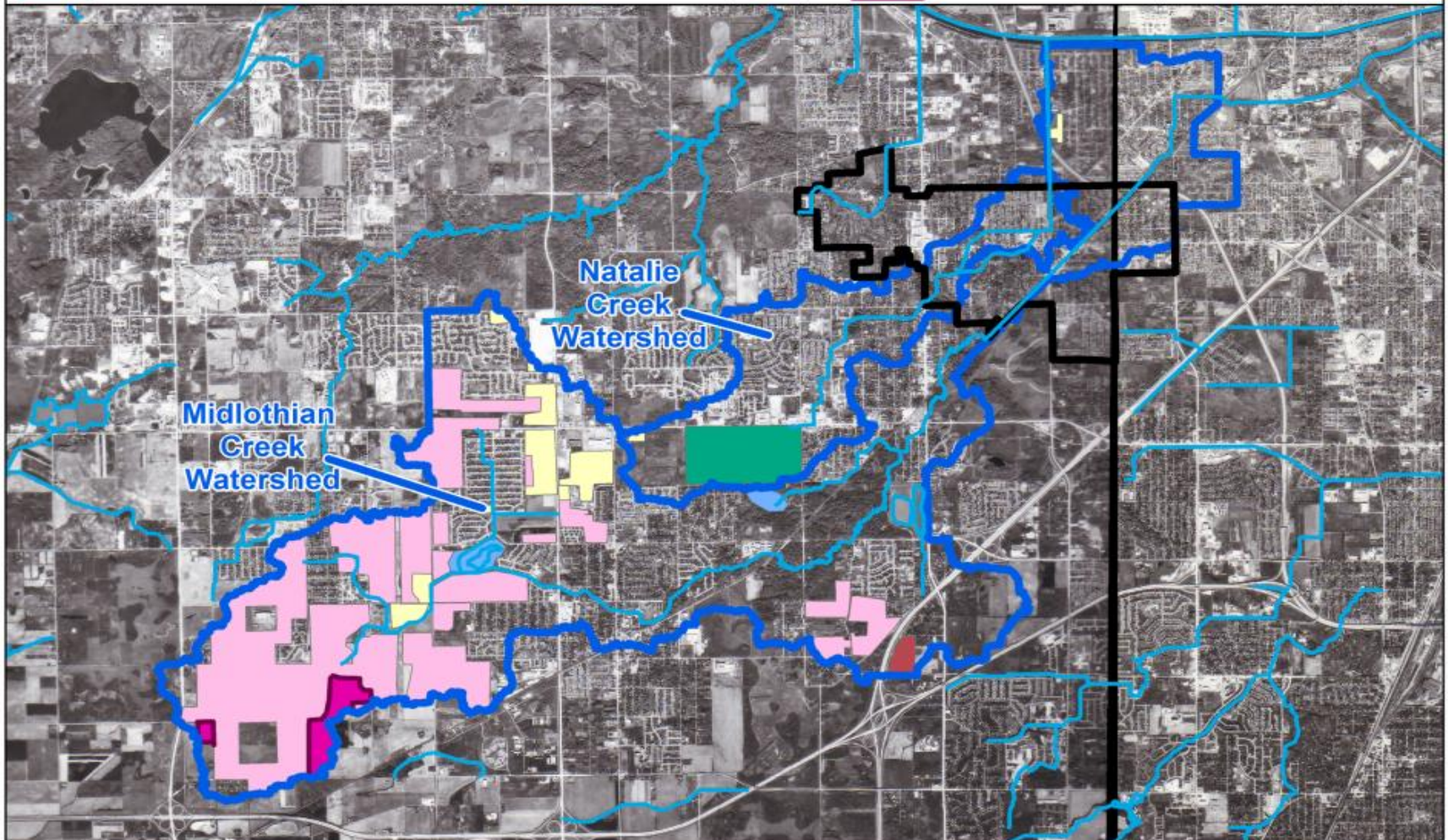








# Development in Watershed Since 1978











# RAINREADY HOME

























# RainReady Home: \$4,850

Cumulative flood damage: \$17,000

## Upgrades:

- Backwater valve
- Disconnected downspout
- Re-routed gutters
- Rain garden





# RAINREADY ALERT





# LEGISLATION



# BENEFITS



- Workforce training
- Complete streets and placemaking
- Brownfield + industrial site development
- Ecological restoration
- Restore tree canopy and urban forestry



# RAINREADY STIMULUS



Build a sustainable business model to aggressively retrofit residential, commercial and public buildings and adjacent public rights-of-way in Cook County.

- Information
- Financing
- Workforce training
- Risk analysis + accreditation models





**THANK YOU**

Harriet Festing  
harriet@cnt.org  
www.rainready.org