

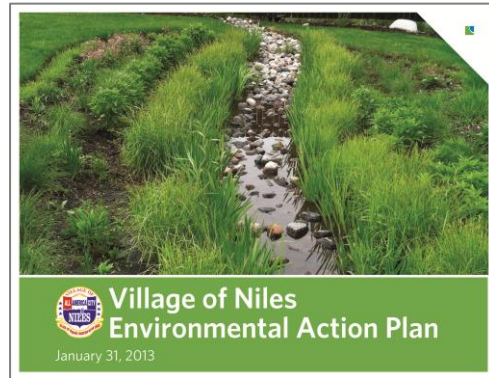
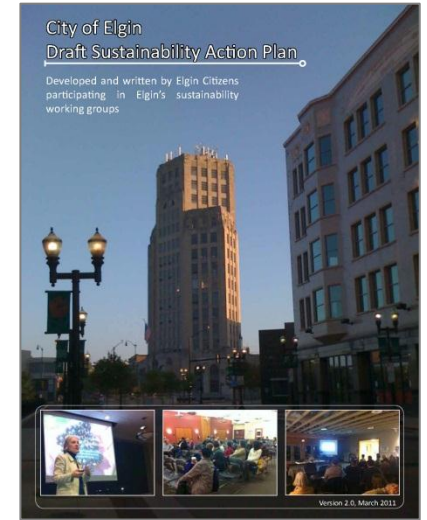
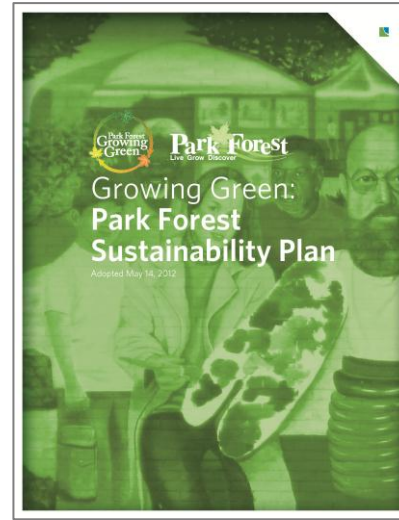
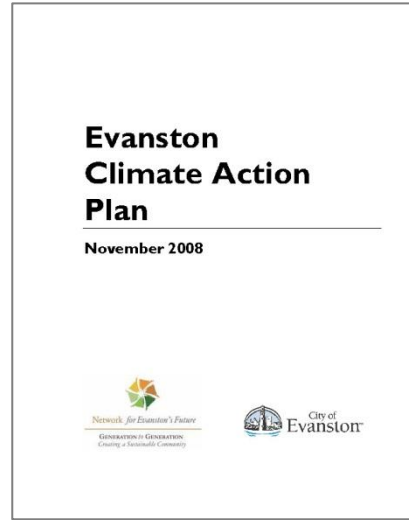
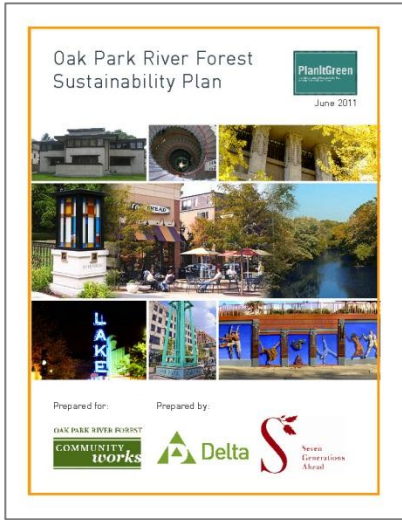


Sustainability Plan White Paper

Environment and Natural Resources Working Committee – 5/6/15

Kristin Ihnchak, CMAP

Previous and Ongoing LTA Work



Chicago Metropolitan Agency for Planning



White Paper Outline

1. Introduction

- Sustainability in Local Planning
- What is a Sustainability Plan?
- Sustainability in GO TO 2040
- Reasons to Develop a Sustainability Plan
- How to Use this White Paper

2. Planning Process

- Defining the Scope of the Planning Process
- Determining Key Topics to Be Addressed

3. Creating a Sustainability Plan

- Assessing Existing Conditions
- Engaging the Public
- Choosing Plan Recommendations
- Setting Sustainability Targets
- Implementation Guidance

4. Integrating Sustainability into Comprehensive Plans

- Structuring Sustainability Recommendations within a Comprehensive Plan

5. Moving Forward After Plan Adoption

- Periodic Plan Update
- Ongoing Communication
- Common Challenges and Lessons Learned

Sustainability Indicators Guide

Planning Process: Defining the Scope

Sustainability Plan (SP) Tasks	Comprehensive Plan (CP) Tasks	Notes
Project Initiation		
Board / Council presentation	Board / Council presentation	
Staff kick-off meeting	Staff kick-off meeting	
Steering Committee (SC) kick-off meeting	Steering Committee kick-off meeting	It is particularly important to engage community citizens and organizations in SP development. They are typically included on the SC or separate advisory committee
Public Kick-off		
<i>Initial SP engagement efforts include both issues / opportunities & visioning discussions, while CP process typically splits these two discussions into separate meetings (see "Develop Key Recommendations" below)</i>		
Public kick-off workshop – sustainability visioning	Public kick-off workshop – issues and opportunities	SP workshop focuses on identifying areas of community interest for sustainability-related initiatives, programs, & policies, and visioning
Stakeholder interviews	Stakeholder interviews	
Focus groups	Focus groups	Organize SP focus groups to discuss key SP topic areas
Draft vision statement	[happens later in process]	Vision statement summarizes public input and sets direction for plan development
Existing Conditions Report (ECR)		
Review existing documents	Review existing documents	Ask staff to provide a list of existing sustainability-related programs, policies, and initiatives
Collect and analyze data & calculate baselines	n/a	Gather data from staff and external agencies, and calculate baselines for inclusion in ECR
Draft the existing conditions report	Draft the existing conditions report	Data analysis is included in draft CP ECR, but typically does not result in baselines
Staff & Steering Committee review	Staff & Steering Committee review	

Planning Process: Defining the Scope

Sustainability Plan (SP) Tasks	Comprehensive Plan (CP) Tasks	Notes
Develop Key Recommendations		
[happens earlier in process]	Public visioning workshop	CP processes often add another public engagement step specific to visioning at this point in the process
[happens earlier in process]	Draft vision statement	CP processes may offer a draft vision statement at this point in the process, rather than earlier as with a SP
Draft key recommendations memo	Draft key recommendations memo	
Staff & Steering Committee review	Staff & Steering Committee review	
Develop the Plan		
Draft the plan	Draft the plan	
Set targets	n/a	Work from baselines to extrapolate reasonable but progressive targets in conjunction with stakeholders and plan recommendations
Focus groups	n/a	Focus groups on specific SP topic areas are brought back at this point to discuss plan recommendations and indicators
Refine and Adopt the Plan		
Staff & Steering Committee review	Staff & Steering Committee review	
Public open house	Public open house	
Adoption meetings	Adoption meetings	

Planning Process: Key Topics

Core Topics

- A. Land Use & Development
- B. Transportation & Mobility
- C. Open Space & Ecosystems
- D. Water
- E. Waste
- F. Energy
- G. Air and Climate
- H. Education

Other Popular Topics

- A. Green Economy
- B. Local Food Systems
- C. Municipal Policies & Practices
- D. Community Health & Wellness

Frequency of topics addressed in select sustainability plans

Topic	Frequency
Energy	12
Land Use and Development	12
Transportation	11
Open Space and Ecosystems	9
Waste	9
Water	9
Climate and Greenhouse Gases	7
Environmental Education	6
Civic Engagement	6
Green Economy and Jobs	6
Local Commerce	6
Renewable Energy	6
Air Quality	4
Resource Conservation	4
Green Building	4
Local Food	3
Arts and Culture	3
Community Health and Wellness	3
Tourism	2
Housing	2
Human Services	1

Strategy Matrix: Open Space and Ecosystems

Issue	Strategy	Resources Needed to Implement			Leader(s)
		Cost	Staff	Complexity	
Increase the amount of open space and protect natural resources	Preserve and restore existing community open spaces and identify areas for future open space	Varies	Moderate	Potentially large acquisition costs upfront, requires ongoing labor, maintenance	Community development department, park district
	Create a open space and/or parks master plan	Low if done in-house; moderate if consultant-led	Low if consultant-led; moderate if done in-house	Requires adoption	Park district, community development department, Forest Preserve District, conservation/environmental NGOs
	Use available data and resources, such as the Green Infrastructure Vision 2.0 and Illinois Natural Areas Inventory, to help prioritize protection of natural resources in development decisions	No cost	Low to moderate	Potential development pressure	Community development department
	Evaluate the potential to expand park dedication requirements for subdivisions to ensure that new residents have adequate access to open space	Low	Low	Requires Board/Council approval	Community development department
Improve ecosystem service functions of open space	Increase the green infrastructure network to better manage stormwater and provide habitat	Varies	Low to moderate	Potentially large cost	Public works department, park district
	Prevent and manage terrestrial and plant invasive species	Low to moderate	Low	Low	Public works department, park district
	Encourage native landscaping by incorporating it into municipal / roadway landscaping and allowing through ordinances	Low	Low	Low, potential for some opposition to aesthetics of natives	Public works and community development departments
	Ban or discourage the use of chemical pesticides	No cost	Low	Low	Public works department
	Develop an urban forest management plan to increase tree canopy and diversity	Moderate	Low to moderate	Requires ongoing effort	Public works department, park district, municipal staff, conservation and environmental NGOs

Choosing Plan Recommendations: Considerations

- Community's **previous approach** to sustainability issues. Plan recommendations should build on past efforts/priorities in a logical fashion
- **Preferences** on the part of the community toward some sustainability topics, resulting in willingness to “push the envelope” for those topics while remaining more tentative on others
- Need to ensure that the recommended strategies are **diverse in type** and include policies, systemic changes, programs, events, and education
- Appetite for **incentives versus requirements** or penalties (carrots and sticks)
- **Governmental leadership** on the importance of sustainability (or lack thereof) can influence how aggressive recommendations can be
- **Budgetary constraints** may make it difficult to recommend strategies that impose new or increased budget line items, even if those strategies will result in long-term cost savings

Engagement and implementation

- Leadership (municipal/county vs external groups)
- Steering Committee (technical vs citizens committees)
- Focus groups
- Stakeholder interviews
- Public meetings (kick-off, open house)

The screenshot shows a digital interface for selecting strategies. It is divided into four vertical panels: 1. CHALLENGE, 2. RANK GOALS, 3. CHOOSE STRATEGIES, and 4. GET INVOLVED. The main content area is titled 'Choose Strategies' and includes instructions: 'include or exclude each strategy. Please set one as your favorite:'. A list of strategies is displayed under the heading 'Buildings & Development: Encourage green buildings and development.' The strategies listed are:

- Create new zoning and building standards to require sustainable development
- Require preservation of natural resources in development regulations
- Convert residential land at key intersections to commercial uses to create neighborhood shops
- Create a homeowners manual that includes guidance on affordable, sustainable home improvements
- Provide information to the general public on grants, and programs related to green building

Each strategy card includes an 'Info' icon, a thumbs-up icon, a question mark icon, and a star icon. A tooltip for the 'Convert residential land...' strategy provides definitions for 'Impact' and 'Cost':

- Impact:** The strategy's relative effectiveness in achieving related goal and overall Village sustainability.
- Cost:** The relative upfront cost of implementing the strategy.

At the bottom, there is a 'Next goal' button and a progress indicator for 'Impact' and 'Cost'.

Sustainability Indicators Guide Outline

1. Introduction
2. Types of Indicators (process, outcome)
3. Establishing Sustainability Indicators
4. Recommended Sustainability (Core) Indicators

Process indicator

Measures the progress of foundational preparatory actions, such as plan, policy, and code development, research and analysis, and education activities

Outcome indicator

Tracks how well a particular goal is being met (i.e. a 20 percent reduction in electricity consumed by a goal year)

Establishing Sustainability Indicators

Step 1: Select Sustainability Indicators

- Ability to be measured on a regular basis
- Usefulness for decision-making
- Responsiveness to levers of change (ability to effect change, i.e. air quality)
- Clarity and ease of comprehension

Step 2: Establish Baselines

Step 3: Set Targets

- Reflect community ambition
- Can relate to or co-opt goals of other entities (regional, state, federal, international, industry standards)
- Guesswork, logic, and/or math

Step 4: Monitor Progress



Recommended Core Indicators

Indicator	Land Use & Development	Transportation & Mobility	Open Space & Ecosystems	Water	Waste	Energy	Air & Climate
Land Use							
New developments in areas with existing infrastructure / services *	x	x					
Residential density of areas with transit service	x	x					
Transportation							
Commuting trips by transit, bicycling, and walking *		x					x
Vehicle miles traveled per household *		x					x
Open Space & Ecosystems							
Acres of park space per capita	x		x				
Acres of protected lands *	x		x				
Water							
Presence and/or rating of local waterbodies on IL EPA 303(d) List *				x			
New developments that incorporate green infrastructure BMPs				x			
Water use intensity *	x			x			
Energy							
Renewables in mix of energy supply *						x	x
Energy use intensity *	x					x	x
Permits for renewable energy systems	x					x	x
Waste							
Waste diversion rate					x		
Solid waste generated *					x		
Residential / commercial recycling participation					x		
Air & Climate							
Greenhouse gas emissions generated *	x	x				x	x

* = alignment with Star Community Rating System