

NLCCC



North Lawndale Community
Coordinating Council



CMAP

NORTH LAWDALE NEIGHBORHOOD PLAN COMMUNITY PLANNING CONFERENCE

April 16, 2016





PLEASE TAKE YOUR SEATS!
(AND INTRODUCE YOURSELVES)

NLCCC



North Lawndale Community
Coordinating Council



CMAP

CELESTIAL MINISTRIES DRUM LINE



LIVING THE DREAM THROUGH ARTS

NLCCC



North Lawndale Community
Coordinating Council



CMAP

Welcome

MATT KELLY

PRINCIPAL,

DRW COLLEGE PREP HIGH SCHOOL

NLCCC



North Lawndale Community
Coordinating Council



CMAP

Opening Remarks

RODNEY BROWN

NLCCC EXECUTIVE SUB-COMMITTEE

NLCCC



North Lawndale Community
Coordinating Council



CMAP

Event Host Introduction

VALERIE F. LEONARD

NLCCC EXECUTIVE SUB-COMMITTEE

NLCCC



North Lawndale Community
Coordinating Council



CMAP

Event Host

REV. ALBERT D. TYSON, III
PRESIDING ELDER,
NORTH DISTRICT, CHICAGO CONFERENCE
AFRICAN METHODIST EPISCOPAL CHURCH

NLCCC



North Lawndale Community
Coordinating Council



CMAP

Event Overview

VALERIE F. LEONARD

NLCCC EXECUTIVE SUB-COMMITTEE

NLCCC



North Lawndale Community
Coordinating Council



CMAP

Objectives for Today

- **Community-wide discussion about the future of North Lawndale**
- **Prioritize challenges facing the community**
- **Create a framework to shape the new Neighborhood Plan**

Today's Schedule

- 11:00-1:15 {
- **Opening Remarks**
 - **NLCCC Overview**
 - **Neighborhood Plan Project Background**
 - **Challenges & Opportunities Workshop**

1:15-1:40 {

Comfort Break:
DRW Honors Choirs!
Movie Preview: The Rhythm & the Blues

- 1:40-3:00 {
- **Quality of Life Sector Workshops (Lunch served)**
 - **Adjourn**

Elected Officials Introduction

DENNIS DEER

NLCCC EXECUTIVE SUB-COMMITTEE

NLCCC



North Lawndale Community
Coordinating Council



CMAP

Elected Officials

COMMISSIONER ROBERT STEELE

REPRESENTATIVE ARTHUR TURNER

NLCCC



North Lawndale Community
Coordinating Council



CMAP

NORTH LAWNGDALE COMMUNITY COORDINATING COUNCIL

NLCCC



North Lawndale Community
Coordinating Council



CMAP

North Lawndale Community Coordinating Council

Who We Are

- NLCCC is a group of North Lawndale stakeholders, including:
 - Community-based organizations
 - Business owners
 - Elected officials
 - Residents
- We have come together to guide comprehensive planning and implementation in North Lawndale (Community Area 29).
- We develop innovative solutions to improve the built environment and to increase the capacity of local organizations to make a positive impact on the community.



North Lawndale Community Coordinating Council Mission

- NLCCC transforms the physical, economic, and social fiber of the community through:
 - Strategic and comprehensive planning
 - Civic engagement, and
 - Implementation of stakeholder-driven initiatives.

NLCCC



North Lawndale Community
Coordinating Council



CMAP

North Lawndale Community Coordinating Council Vision Statement

- We envision North Lawndale as a healthy, vibrant community with a diversified and innovative economy, competitive work force, engaged citizens and infrastructure that supports long term, sustainable growth.

Our Approach

- We continually develop and execute bold community-driven solutions with the input of an engaged community that questions assumptions and challenges the status quo.

NLCCC



North Lawndale Community
Coordinating Council

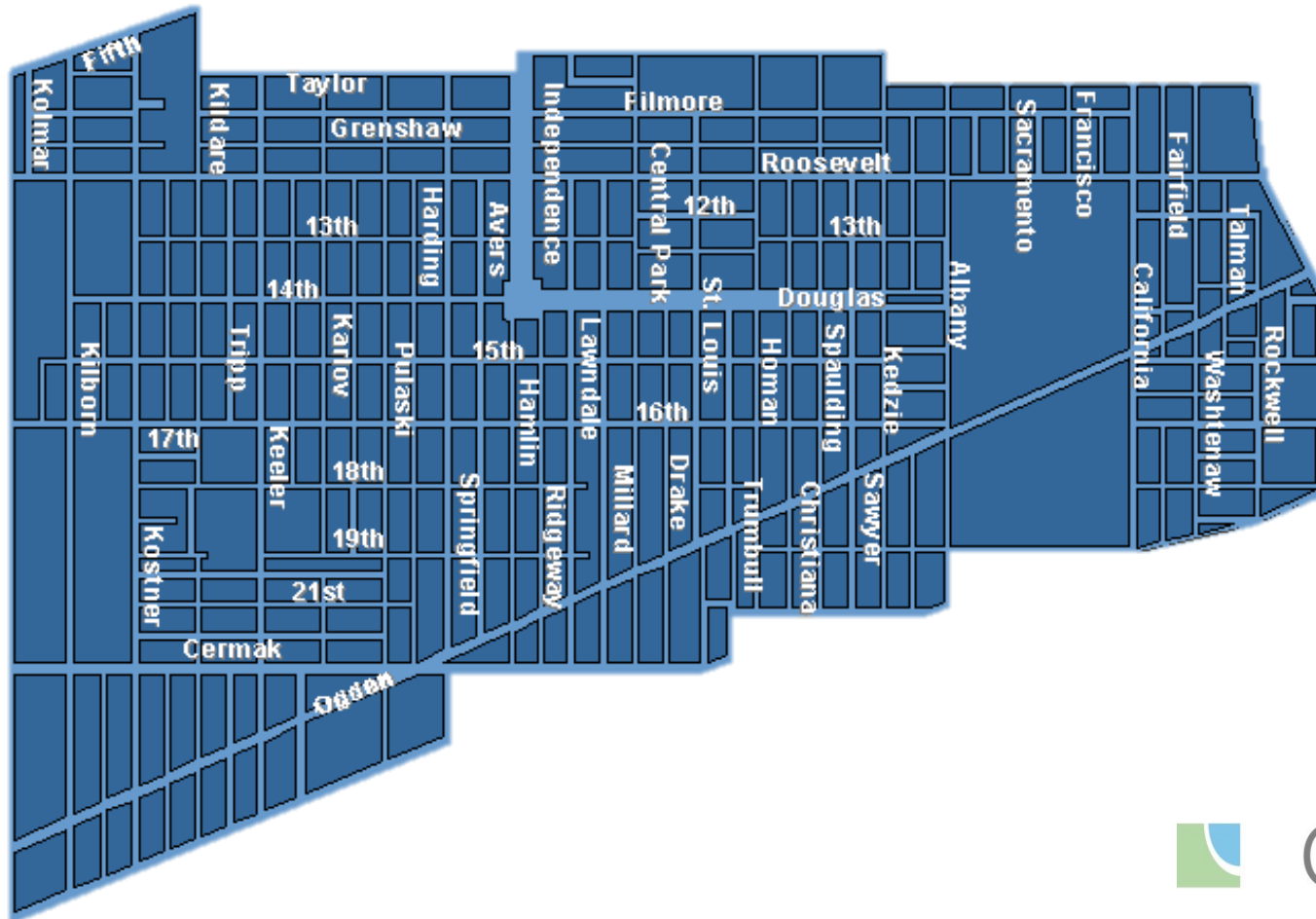


CMAP

North Lawndale Community Coordinating Council

Where We Work

- North Lawndale (Community Area 29)



NLCCC



North Lawndale Community
Coordinating Council



CMAP

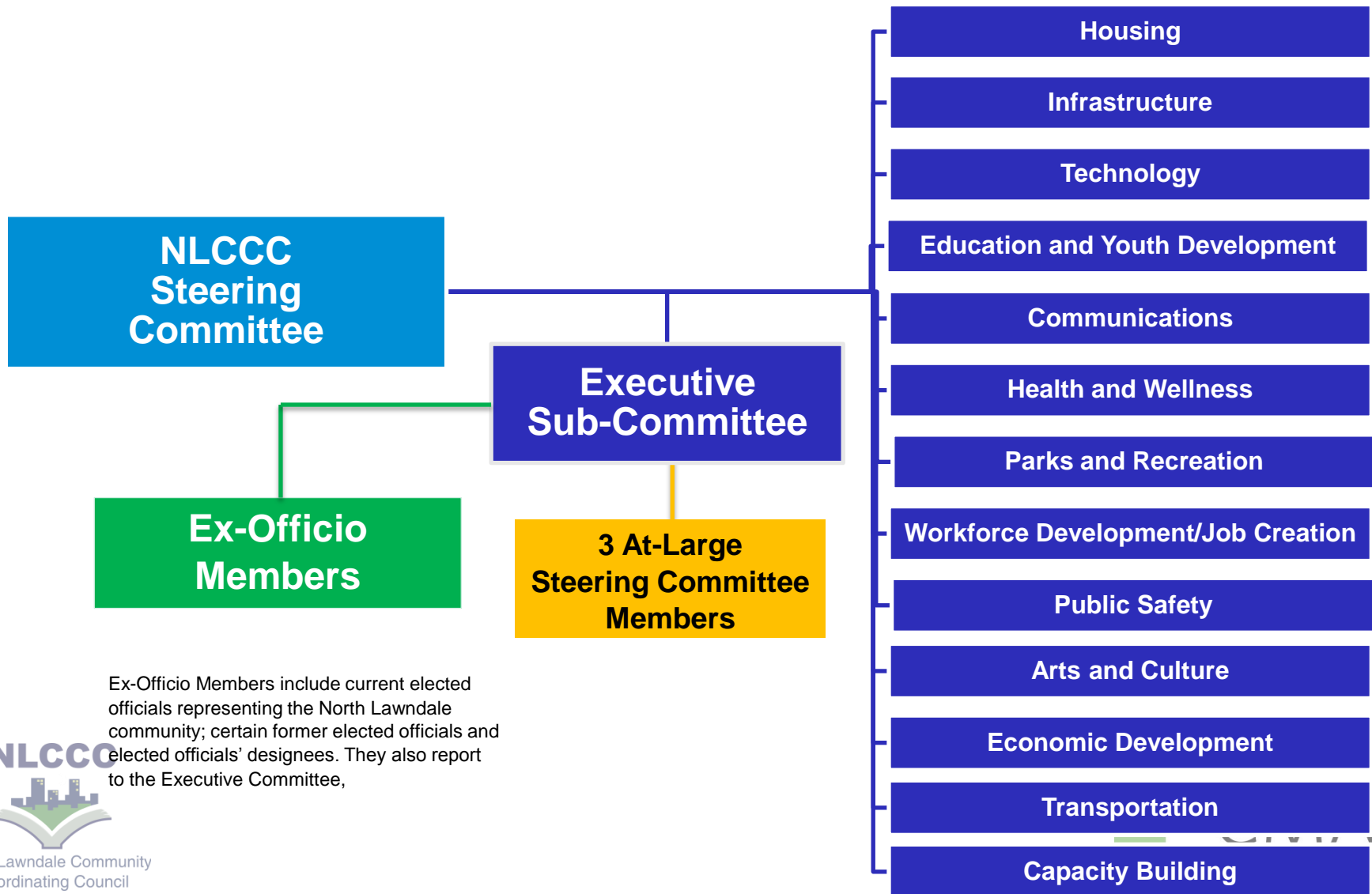
North Lawndale Community Coordinating Council

How We Work

- Led by a Steering Committee
 - Guides strategic direction of NLCCC
 - Develops mechanisms for decision making
 - Provides a framework for comprehensive planning and related processes
 - Makes policy recommendations
- 13 Sub-Committees
 - “Nuts and Bolts” of NLCCC work
 - Organized along various Quality of Life sectors



North Lawndale Community Coordinating Council Organizational Chart



North Lawndale Community Coordinating Council

What We Do

We envision a comprehensive planning process that:

- Takes stock of all the plans
- Develops a snapshot of current conditions and capacity
- Lays a framework that will guide future development
- Establishes goals, objectives, and performance metrics to guide us towards a desired end
- Helps us diversify our economy
- Develops our local residents

NLCCC



North Lawndale Community
Coordinating Council



CMAP

North Lawndale Community Coordinating Council

Why We Do What We Do

- WE LOVE THIS COMMUNITY
- North Lawndale has not had a comprehensive planning process in nearly 50 years.
- No entity exists to:
 - Develop guiding principles and policies
 - Coordinate development activities to maximize impact of growth
 - Ensure equitable distribution of resources throughout the community
 - Provide a sense of “place” for North Lawndale

NLCCC



North Lawndale Community
Coordinating Council



CMAP

North Lawndale Community Coordinating Council

What Makes This Process Different?

- Participatory process that will engage rank and file residents in meaningful ways, “early and often”
- Focus on the entire community
- Include land use, utilities, transportation, and infrastructure
- Improve the built environment as well as programs, services and businesses
- Accountability to the community and stakeholders
- Transparency in our decision making

NLCCC



Effect City policies that guide development



CMAP

NORTH LAWDALE NEIGHBORHOOD PLAN

NLCCC



North Lawndale Community
Coordinating Council



CMAP

Chicago Metropolitan Agency for Planning (CMAP)

- Established in 2005
- Mission:
To plan comprehensively for economic prosperity and quality of life.
- Serves the third largest metropolitan region in U.S.
 - 7 Counties
 - 284 Municipalities
 - Over 1,200 units of local government

www.cmap.illinois.gov

Local Technical Assistance (LTA) Program

- Provides assistance to communities across the Chicago metropolitan region
- Supports implementation of the GO TO 2040 comprehensive regional plan
 - Foster Livable Communities
 - Support & Leverage Human Capital
 - Promote Transparent, Efficient Governance
 - Invest in Regional Mobility

NLCCC



North Lawndale Community
Coordinating Council

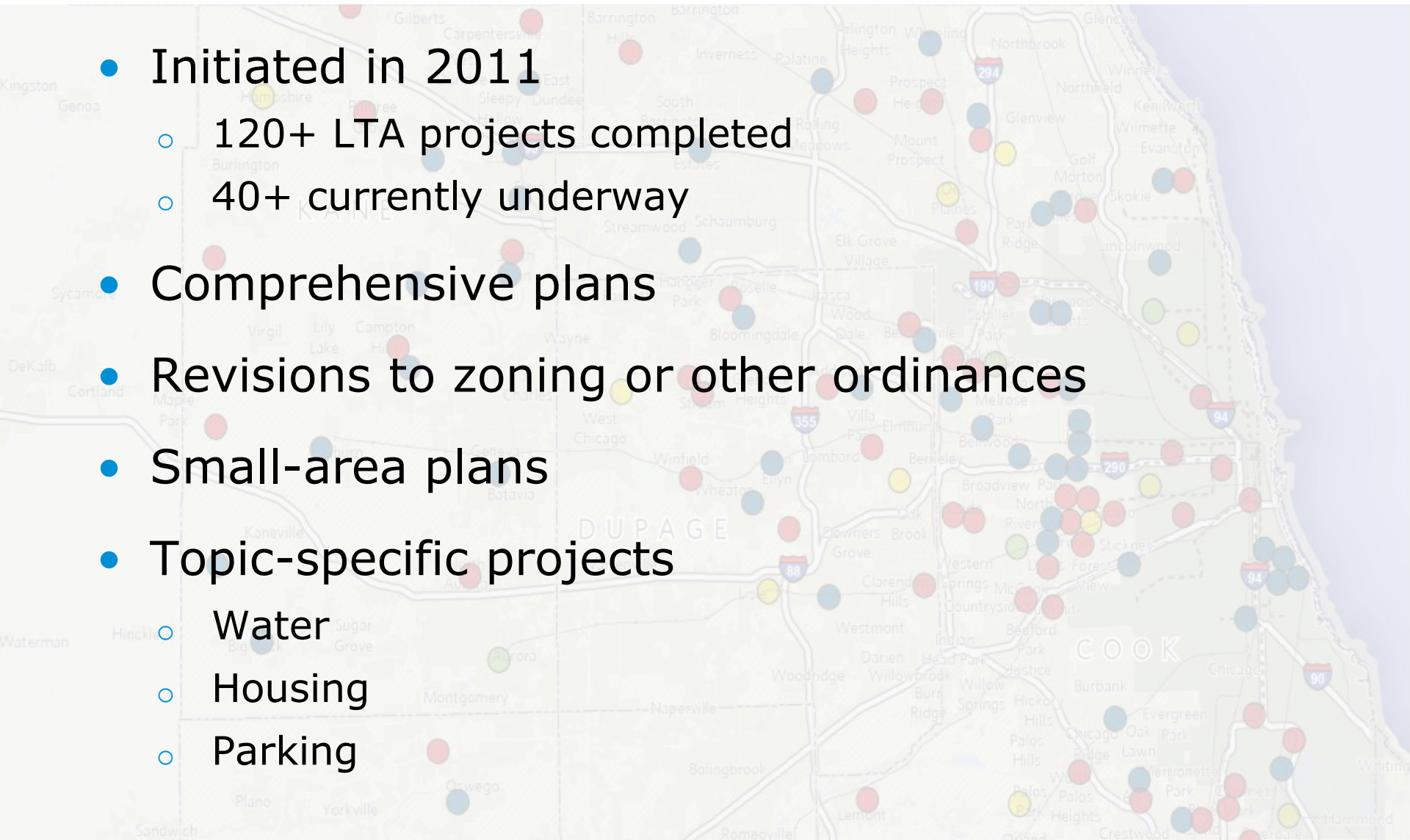


CMAP

LTA Program

Major Project Types

- Initiated in 2011
 - 120+ LTA projects completed
 - 40+ currently underway
- Comprehensive plans
- Revisions to zoning or other ordinances
- Small-area plans
- Topic-specific projects
 - Water
 - Housing
 - Parking

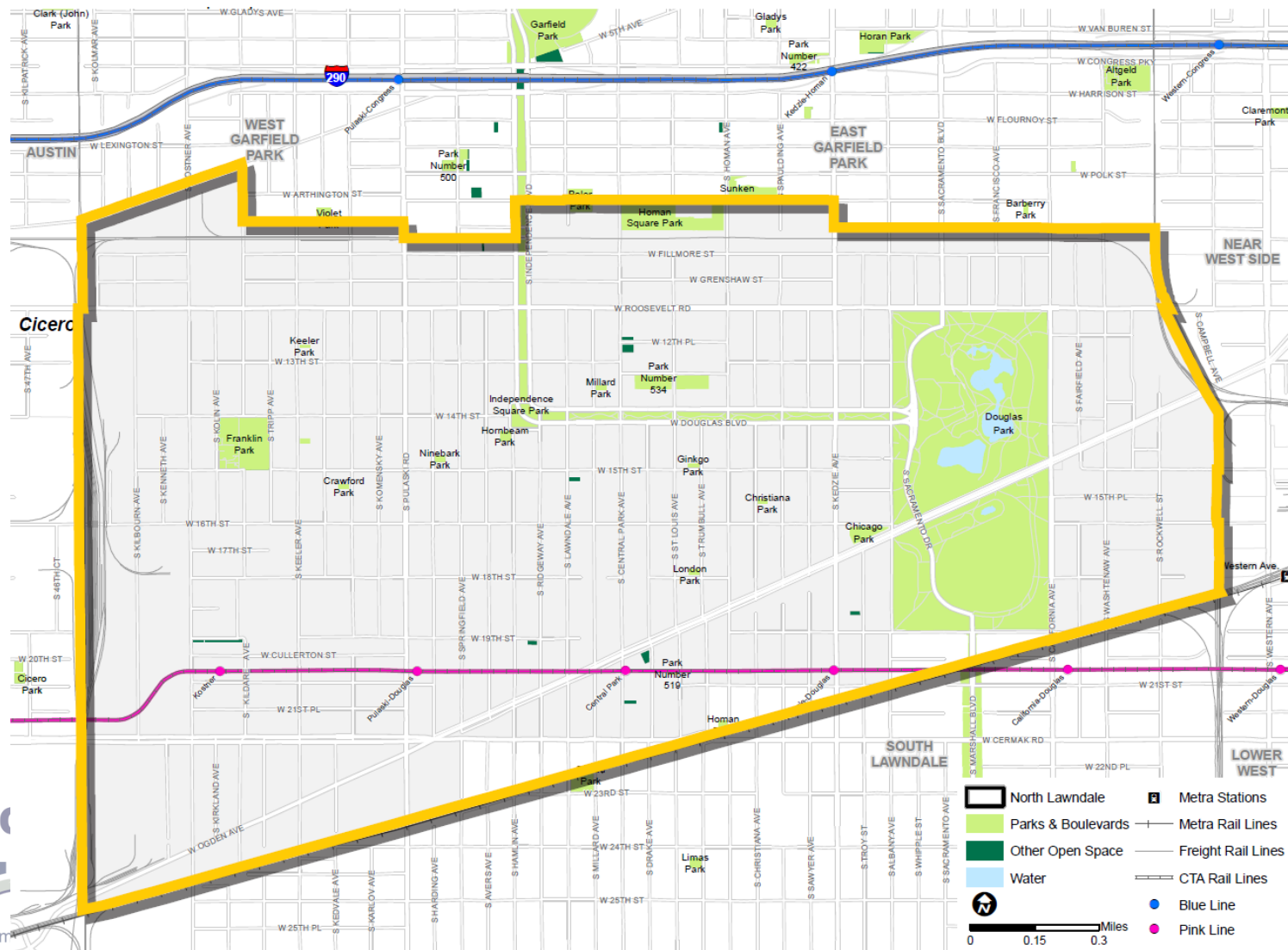


What is Land Use Planning?

- Create a long-term guide for future development to achieve broader community goals
 - Answer the question: “Where should things go in our community?”
 - Residential
 - Commercial
 - Industrial
 - Community Facilities
 - Open Space
 - Planning is NOT Zoning
 - Zoning is a tool for implementing a land use plan
- Zoning provides specific rules for what is allowed (and what is not allowed)



North Lawndale Neighborhood Plan Project Area



North Lawndale Neighborhood Plan

Areas of Focus

- Focus on Land Use & Physical Environment
- Housing
 - New investment
 - Repurposing vacant lots
- Commercial Areas
 - Ogden Avenue
 - Roosevelt Road
 - 16th Street
- Transit-Oriented Development
 - Pink Line
- Economic Development

NLCCC

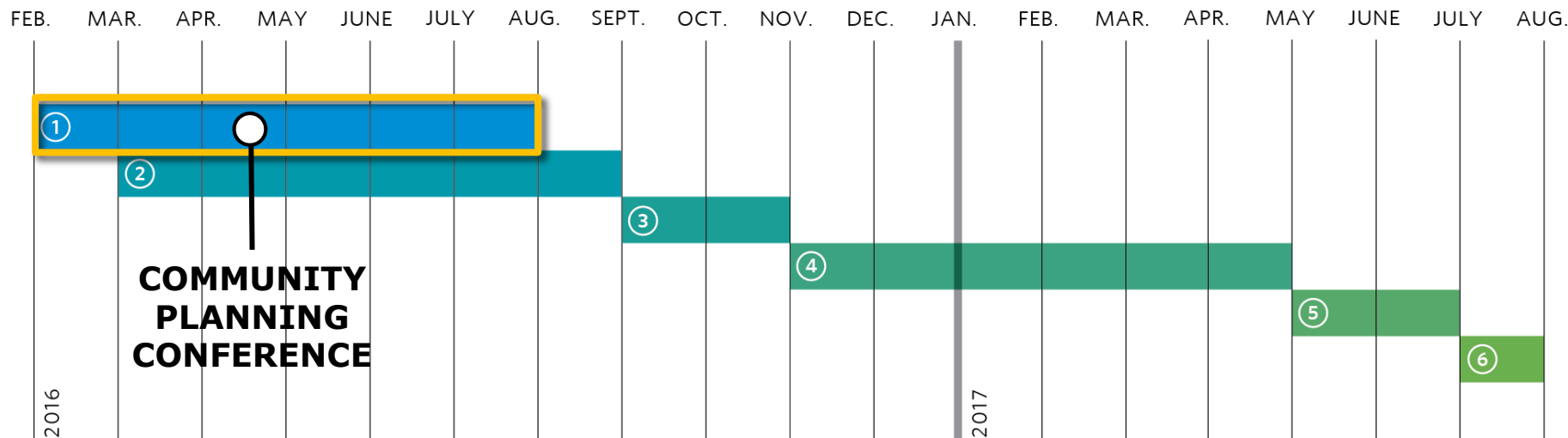


North Lawndale Community
Coordinating Council



CMAP

North Lawndale Neighborhood Plan Planning Process



1. Project initiation & community outreach

2. Existing conditions analysis

3. Visioning & key recommendations

5. Approval
4. Plan development

6. Implementation

North Lawndale Neighborhood Plan Planning Process

- **Phase 1: Listening**
- **Phase 2: Existing Conditions**
- **Phase 3: Visioning**
- **Phase 4: Plan Making**
- **Phase 5: Approval**
- **Phase 6: Implementation**



NLCCC



North Lawndale Community
Coordinating Council

CHALLENGES & OPPORTUNITIES WORKSHOP

NLCCC



North Lawndale Community
Coordinating Council

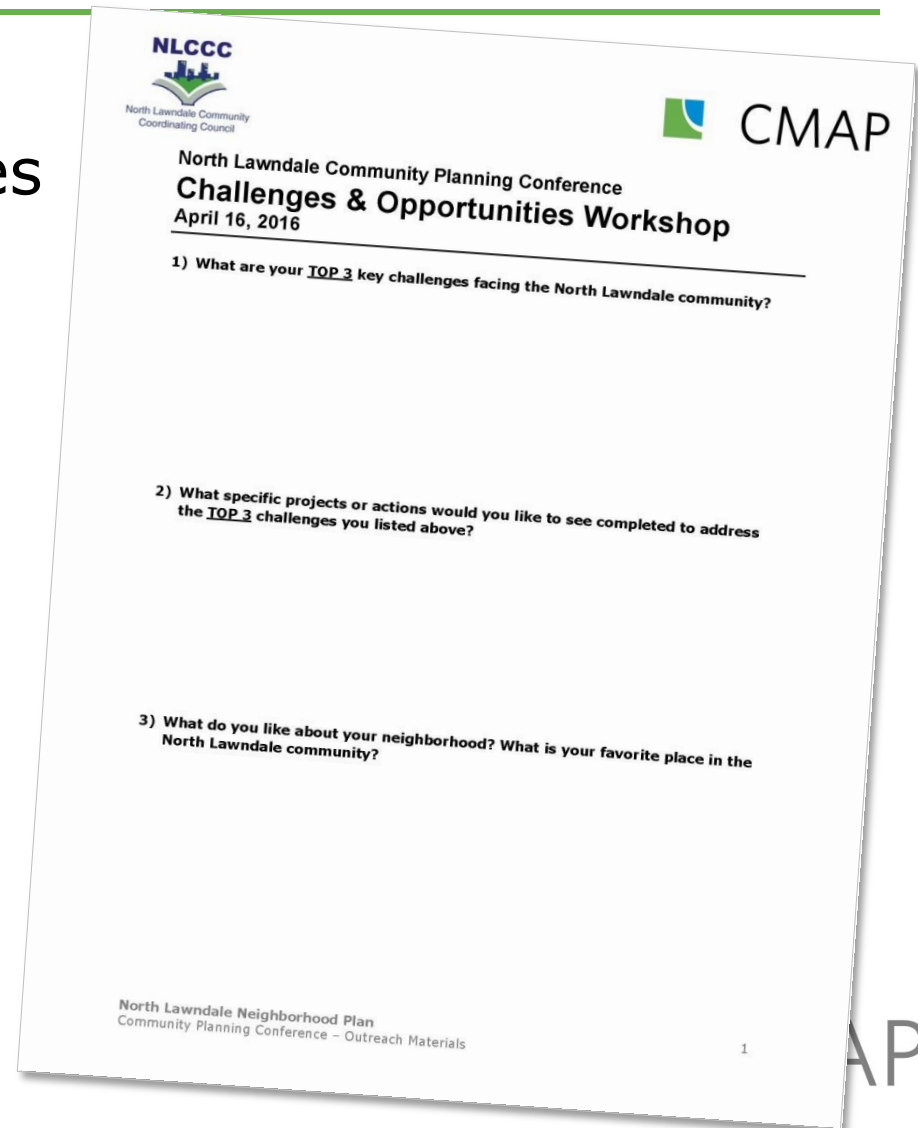


CMAP

Challenges & Opportunities Workshop

Workshop Exercise

- **Question 1:**
Identify top challenges
25 Minutes
- **Question 2:**
Identify projects to
address challenges
25 Minutes
- **Question 3:**
Identify assets to
preserve
15 Minutes



Challenges & Opportunities Workshop

How the Workshop will Work

- Small Group Table Discussions
- Worksheets
- Table Facilitators/Note Takers
- Theme Team
- Keypad Polling
- Discussion
- Repeat!

NLCCC



North Lawndale Community
Coordinating Council



CMAP

Challenges & Opportunities Workshop

Ground Rules

- No Personal Attacks
- Seek common ground & understanding
- All ideas are valid
- Respect
- Speak honestly
- Stay open
- Have Fun!

NLCCC



North Lawndale Community
Coordinating Council



CMAP

NLCCC



North Lawndale Community
Coordinating Council



CMAP

Warm-up Questions:
WHO IS HERE TODAY?



Challenges & Assets Workshop

Using Keypad Polling

- Firmly press the button of your choice (A-J)
- When the light turns **green**, your vote has been received
- Votes are anonymous
- If you make a mistake or change your mind, vote again, as long as the polling is open
- Your last vote is the vote that counts
- No need to press “Go”



NLCCC



North Lawndale Community
Coordinating Council

Who's Here Today

Have you ever lied to your mother?

10% **A.** Never

20% **B.** Once or twice

31% **C.** Several times

39% **D.** Too many to count

NLCCC



North Lawndale Community
Coordinating Council

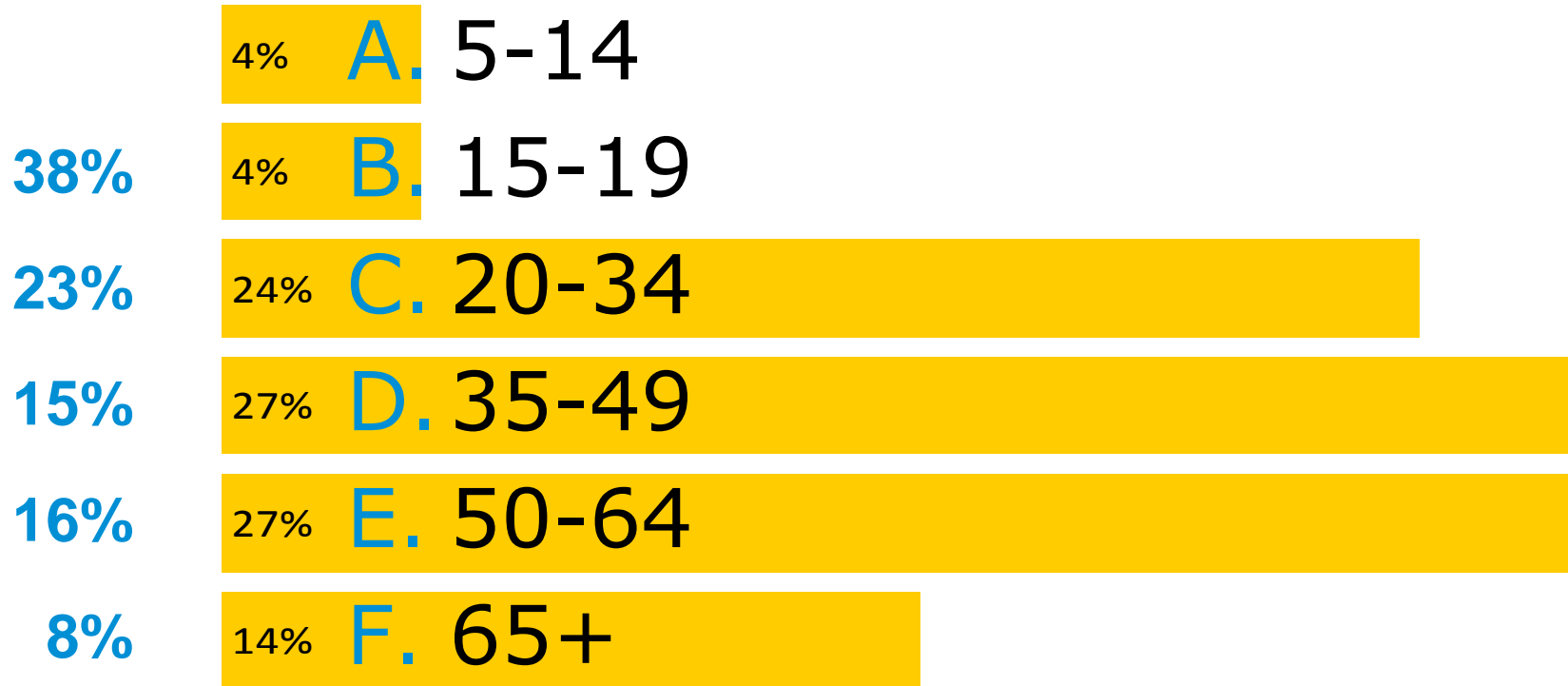


CMAP

Who's Here Today

How old are you?

Census



NLCCC



North Lawndale Community
Coordinating Council



CMAP

Who's Here Today

What is your gender?

Census

44%

33% **A.** Male

56%

67% **B.** Female

NLCCC



North Lawndale Community
Coordinating Council



CMAP

Who's Here Today

What is your ethnicity?

Census

91%

61% **A.** African American/Black

6%

5% **B.** Hispanic/Latino

0.2%

2% **C.** Asian/Pacific Islander

2%

26% **D.** White

1%

6% **E.** Other

NLCCC



North Lawndale Community
Coordinating Council



CMAP

Who's Here Today

What is your connection to North Lawndale?



NLCCC



North Lawndale Community
Coordinating Council



CMAP

Who's Here Today

How did you hear about today?

21% A. Email

7% B. Posters in the community

4% C. Postcard handed to me

10% D. Facebook/Twitter

0% E. CAN TV

33% F. Friends/Family/Colleagues

17% G. Neighborhood Group/Church

8% H. Other



North Lawndale Community
Coordinating Council





Question 1:

What are the KEY CHALLENGES Facing the
North Lawndale community?





Question 1:

What are the KEY CHALLENGES Facing the
North Lawndale community?

10 MINUTES LEFT!





Question 1:

What are the KEY CHALLENGES Facing the
North Lawndale community?

5 MINUTES LEFT!





Question 1:

What are the KEY CHALLENGES Facing the
North Lawndale community?



1. What are the Top 3 Challenges facing North Lawndale?

14% A. Vacant Lots/Buildings – Investment/Safety

10% B. Lack of Youth Opportunities

17% C. Economic Dev. – Unemployment/Training

16% D. Public Safety – Violence/Gangs

8% E. Schools – Educational Opportunities

10% F. Food Deserts/Lack of Retail

5% G. Housing Affordability

6% H. Poor Neighborhood Perception

11% I. Lack of Jobs

2% J. Other





Question 2:

What SPECIFIC PROJECTS OR ACTIONS would
you like to see completed to address
North Lawndale's challenges?





Question 2:

What SPECIFIC PROJECTS OR ACTIONS would
you like to see completed to address
North Lawndale's challenges?

10 MINUTES LEFT!





Question 2:

What SPECIFIC PROJECTS OR ACTIONS would
you like to see completed to address
North Lawndale's challenges?

5 MINUTES LEFT!





Question 2:

What SPECIFIC PROJECTS OR ACTIONS would
you like to see completed to address
North Lawndale's challenges?



2a. What are the Top 3 Projects/Actions for addressing Economic Development in North Lawndale?

- 14% A. Corp. investment (e.g. Wholefoods-Englewood)
- 19% B. Local trades training programs
- 15% C. Tax incentives to hire/train local residents
- 17% D. Small business training/resources – Local Ownership
- 20% E. Reactivating vacant properties (e.g. business incubator)
- 4% F. Joint marketing of community businesses
- 6% G. Encourage pop-up shops
- 6% H. Chamber of Commerce involvement/Business Coord.

NLCCC



North Lawndale Community
Coordinating Council



CMAP

2b. What are the Top 3 Projects/Actions for addressing Vacant Lots/Bldgs. in North Lawndale?

7% A. Grants for demolition

14% B. Community gardens on vacant lots

18% C. Program for buying lots by neighbors

7% D. Create a land trust

9% E. Neighborhood art projects

5% F. Expand land banking

14% G. Hold landlords accountable/enforcement

5% H. Adopt-a-Lot Cleanup

21% I. Rehab quality housing

NLCCC



North Lawndale Community
Coordinating Council



CMAP

Question 3:
What do you LIKE MOST about
North Lawndale?



NLCCC



North Lawndale Community
Coordinating Council



CMAP

Question 3:
What do you LIKE MOST about
North Lawndale?

10 MINUTES LEFT!





Question 3:
What do you LIKE MOST about
North Lawndale?

5 MINUTES LEFT!



NLCCC



North Lawndale Community
Coordinating Council



CMAP

Question 3:
What do you LIKE MOST about
North Lawndale?



3. What do you like most about North Lawndale?

- | | |
|-----------------------------------|-----------------------------|
| 1. Central Location | 11. Douglas Park/Boulevards |
| 2. Great Parks | 12. NLCCC |
| 3. K Town | 13. Community Gardens |
| 4. Beautiful Homes | 14. Historic Character |
| 5. Homan Square/Nichols Tower | 15. Student Programs |
| 6. YMCA | 16. Church Community |
| 7. DRW College Prep! | 17. Inclusive Community |
| 8. Transportation Access | 18. Public Library |
| 9. Great Elected Officials | |
| 10. Human Capital (Great People!) | |

Did you learn anything new today?

7%

A. Nothing new

23%

B. A few new things

32%

C. Quite a bit

39%

D. A lot

NLCCC

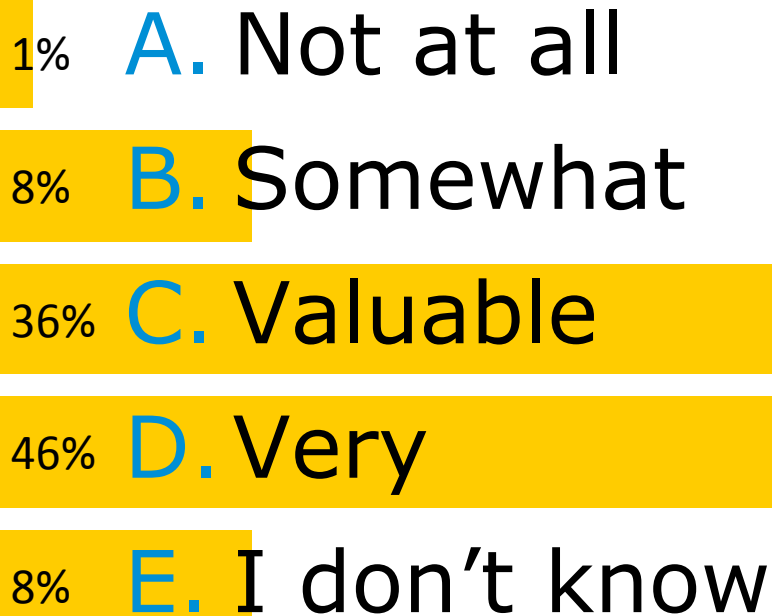


North Lawndale Community
Coordinating Council



CMAP

How valuable was today's workshop for planning for North Lawndale's future?



NLCCC

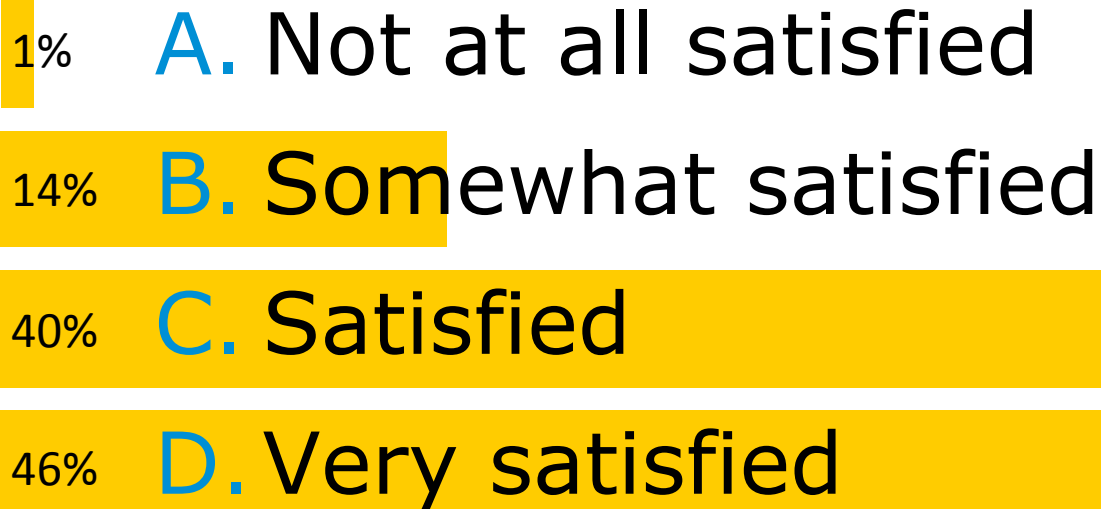


North Lawndale Community
Coordinating Council



CMAP

How satisfied are you with today's workshop?



North Lawndale Neighborhood Plan

Next Steps

- On-line Engagement
<http://northlawndale.metroquest.com>
- Collect Community & Business Surveys
- Synthesize Outreach Findings & Publish Existing Conditions Report
- Community Visioning (“Where do we want to go?”)
- Develop preliminary recommendations
- Write the Plan
- Review, Revise & Adopt Plan



North Lawndale Community
Coordinating Council



NLCCC



North Lawndale Community
Coordinating Council



CMAP

cmap.is/ita-north-lawndale



Afternoon Session – Opening Remarks

ALDERMAN MICHAEL SCOTT, JR.

CONGRESSMAN DANNY K. DAVIS

NLCCC



North Lawndale Community
Coordinating Council



CMAP

DRW HONORS CHOIR



MARTIN WOODS, DIRECTOR

NLCCC



North Lawndale Community
Coordinating Council



CMAP

Movie Preview: The Rhythm & the Blues

BONNI MCKEOWN

TEACHING ARTIST,

CHICAGO SCHOOL OF THE BLUES

NLCCC



North Lawndale Community
Coordinating Council



CMAP

Afternoon Session Overview

VALERIE F. LEONARD

NLCCC EXECUTIVE SUB-COMMITTEE

NLCCC



North Lawndale Community
Coordinating Council



CMAP

NLCCC



North Lawndale Community
Coordinating Council



CMAP

NORTH LAWDALE NEIGHBORHOOD PLAN COMMUNITY PLANNING CONFERENCE

April 16, 2016

