

Commercial Vehicle Operations



I drive a truck. Today a red focus decided to cut me off in a very long, slow traffic jam. We proceeded to make his life hell for the next hour and a half.



Illinois Department of Transportation

Emergency Traffic Patrol
3501 South Normal Avenue, Chicago IL 60609



ETP Patrol Limits

ETP currently patrols 1,037 lane miles on seven major expressways.

We respond 24 hours a day to any disruptive incident likely to occur on our freeway system.

ETP drivers assist over 110,000 motorists annually.



Illinois Department of Transportation

Emergency Traffic Patrol
3501 South Normal Avenue, Chicago IL 60609



Responding to Commercial Vehicle Accidents



- Major events will seriously disrupt traffic and cause major congestion.
- Create significant safety hazards to responders and motorists



Illinois Department of Transportation

Emergency Traffic Patrol
3501 South Normal Avenue, Chicago IL 60609

Commercial Vehicle Incidents

- Truck incidents or disabilities can be relocated by using our Emergency Patrol Vehicle which are designed to safely move an 80,000 lb tractor-trailer.
- If more serious, such as, major accident damage, jack-knife or roll-over, ETP dispatches one or more of our Heavy Duty Tow Vehicles.
- ETP employees are trained by WreckMaster. Trainers provide employees knowledge of towing and recovery concepts within the industry using medium duty wreckers up to massive 90-ton capacity rotating heavy duty wreckers.
- ETP uses safe, quick-clearance tactics to relocate or remove these accidents to a AIS or off the facility where private tows can do their job.
- Depending on the hazard class or damage to trailer, off loading of product on the expressway in the lane may be the only option to clear the scene.



Illinois Department of Transportation

Emergency Traffic Patrol
3501 South Normal Avenue, Chicago IL 60609

Communications

Serious incidents occasionally necessitate interagency, traveler & multi-state communication.

- www.travelmidwest.com Gateway Traveler Information System
- www.travelmidwest.com Travel Midwest Truckers Report
- Media traffic reports
- Highway advisory radio locations
- Traffic Operation Centers
- Dynamic message signs for advanced notice
- Information sharing through e-mail during major incidents

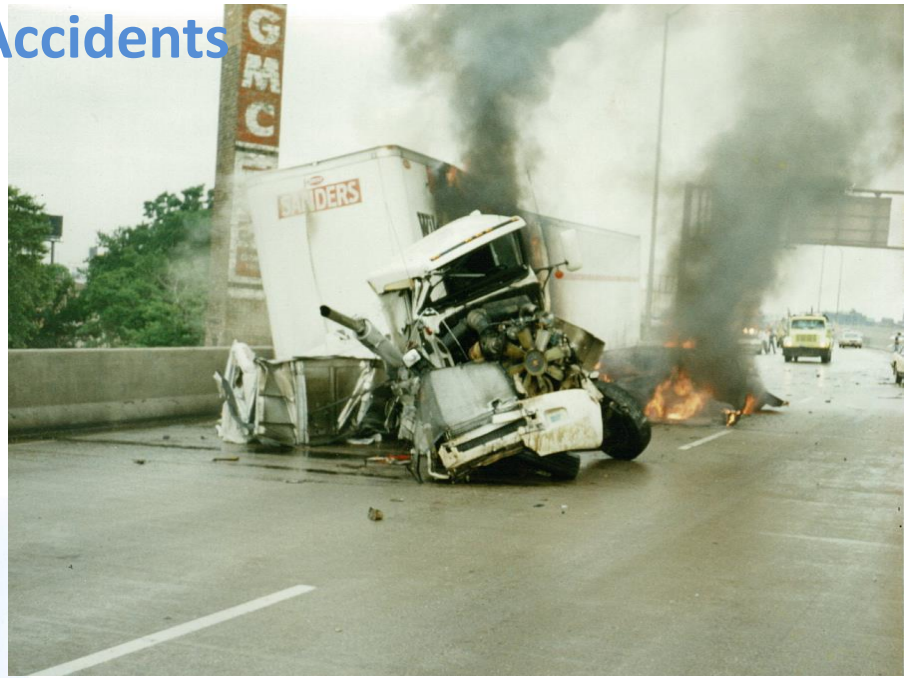


Illinois Department of Transportation

Emergency Traffic Patrol
3501 South Normal Avenue, Chicago IL 60609

Challenges with Commercial Vehicle Accidents

- Lane blockage
- Temporary detours
- Responding to major accidents
- Additional resources required
- Working with other agencies
- Time of incident – rush hour?
- Impact arterials and other expressways



Causes

- Driver Fatigue
- Following too close
- Equipment-brake failure
- Overcompensation / evasive maneuvers
- Unfamiliarity with roadway



ETP Heavy Equipment



With the ever increasing truck traffic on our expressway system, there is a multitude of commercial truck accidents that ETP must respond to. This type of equipment is essential to quickly and safely remove truck accidents from the roadway.



Illinois Department of Transportation

Emergency Traffic Patrol
3501 South Normal Avenue, Chicago IL 60609



ETP Patrol Vehicle



Our Emergency Patrol Vehicle (EPV), forms the backbone of our fleet.

Our EPV's:

- 29,000 GVW Chassis
- 20,000 lb. tow boom with wheel lift
- Front push plate bumper
- Directional arrow indicators mounted
- Multi-directional warning lights
- STARCOM 2-way radios
- Essential incident management tool and equipment storage





Illinois State Police



When private tow companies must be called for removing a disabled or wrecked commercial vehicle, the Illinois State Police will handle that function.



- If the disabled or wrecked commercial vehicle is in the lane, ETP will move it to an Accident Investigation Site where the private tow company can then remove.
- ISP has pre-certified tow companies to be dispatched.
- The location of the incident will dictate what tow company is called.



Illinois Department of Transportation

Emergency Traffic Patrol
3501 South Normal Avenue, Chicago IL 60609