



Greenways and Trails Plan Update

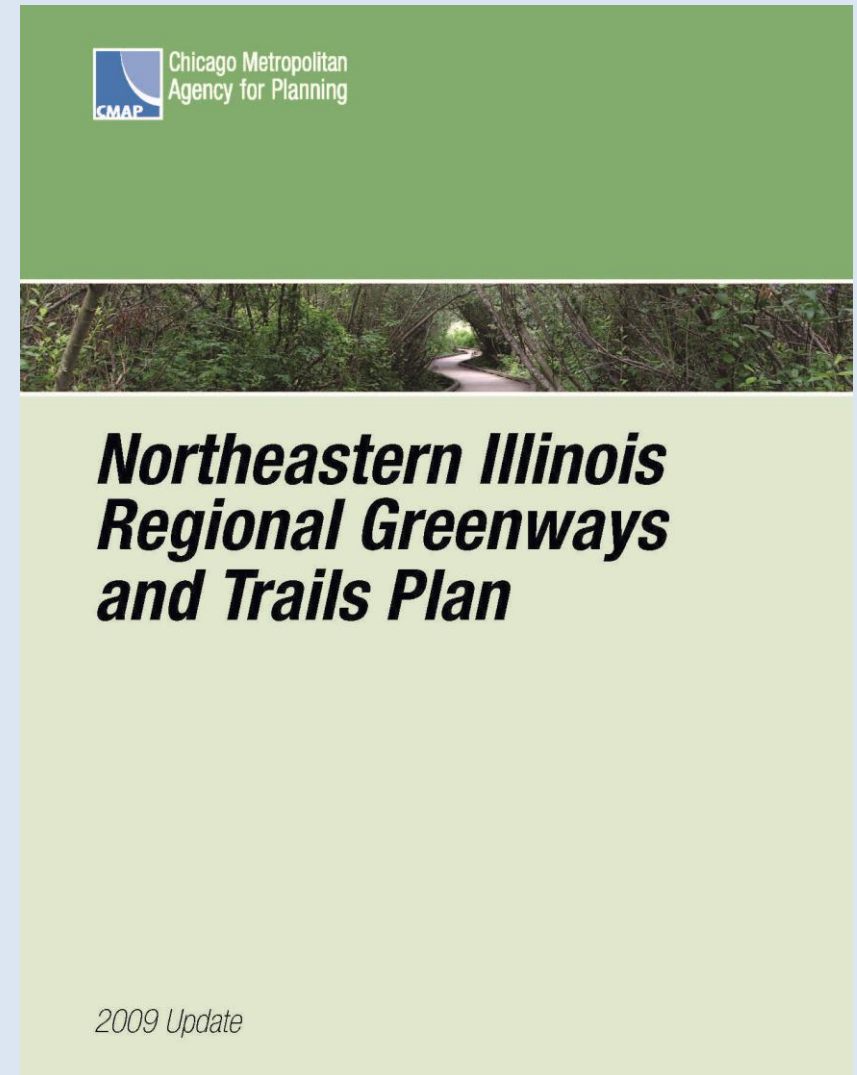
CMAP Bicycle and Pedestrian Task Force

June 15, 2016



GREENWAYS & TRAILS PLAN UPDATE

- Last updated in 2009
- Long-range, multi-jurisdictional plan
- Vision for network of multi-use trails and greenways
- Covers CMAP's seven-county region
- Important role in programming decisions



GREENWAYS & TRAILS PLAN UPDATE

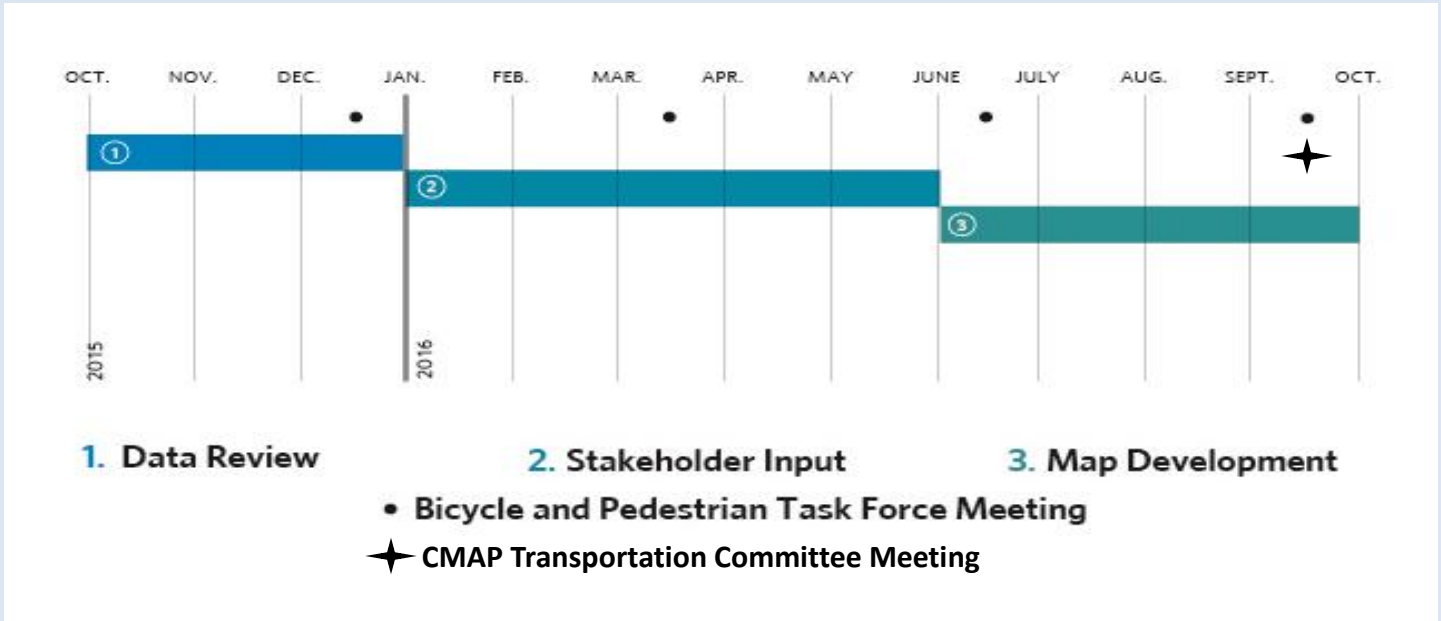
Timeline

Phase 1: Scoping and data review (October - December 2015)

Phase 2: Stakeholder input on trail recommendations (December 2015 -June 2016)

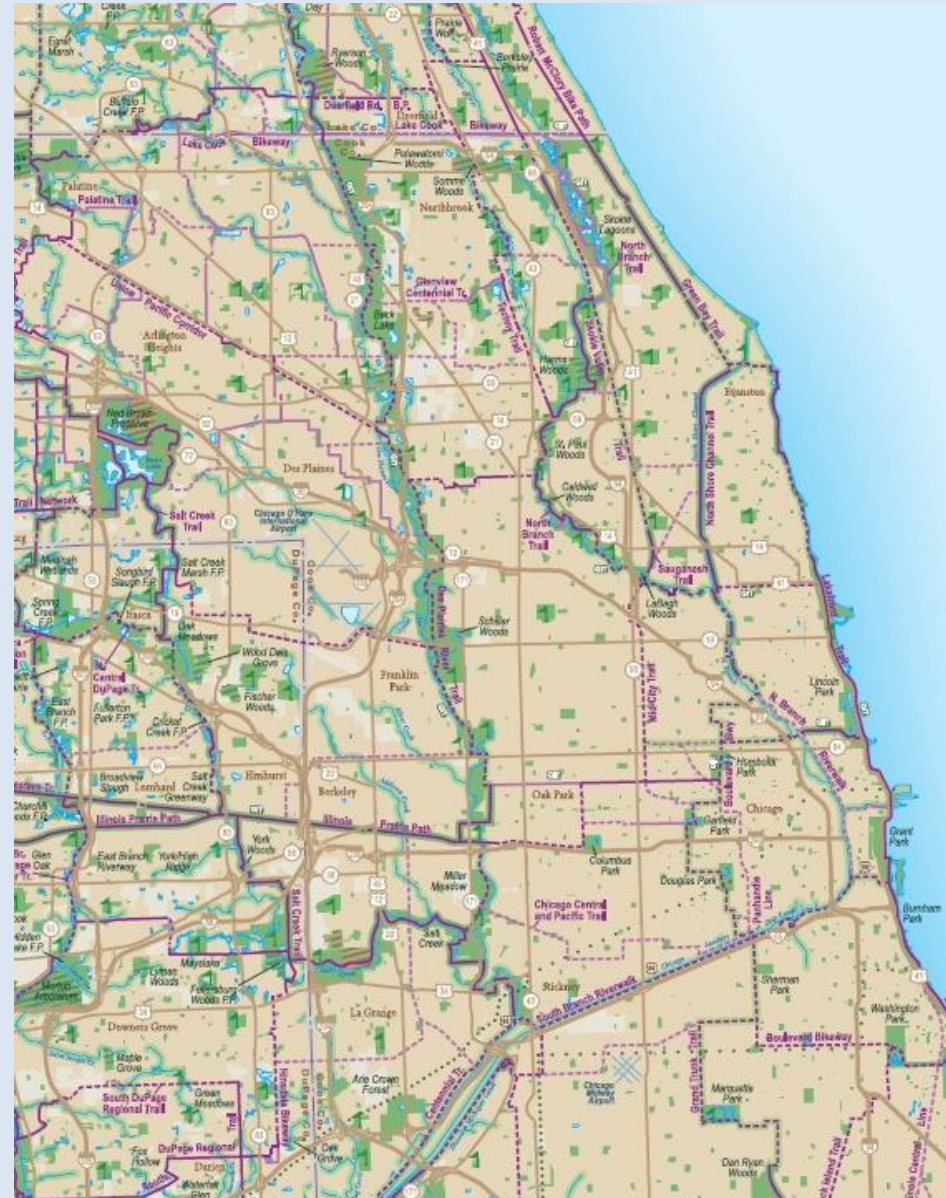
Phase 3: Map development and review (June – September 2016)

Adoption: CMAP Transportation Committee (September 2016)



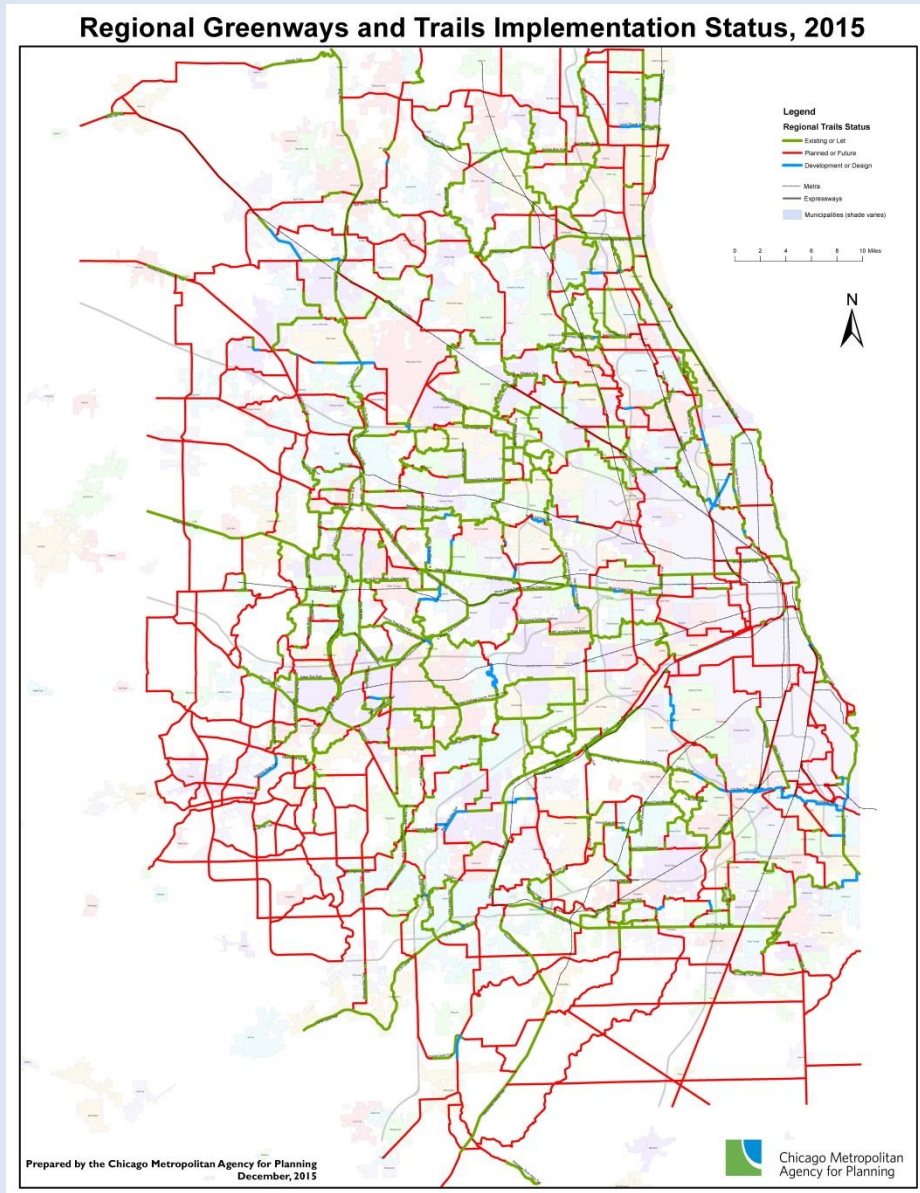
Stakeholder Input Process

- Review 2009 plan for each county/council
- Compare with subsequent local and subregional trail plans
- Prepare draft map of additions, realignments, and deletions
- Meet with county DOTs, FPDs, and subregional councils to revise drafts



Stakeholder Input Process

- **REVIEW 2009 PLAN FOR EACH COUNTY/COUNCIL**
- Compare with subsequent local and subregional trail plans
- Prepare draft map of additions, realignments, and deletions
- Meet with county DOTs, FPDs, and subregional councils to revise drafts

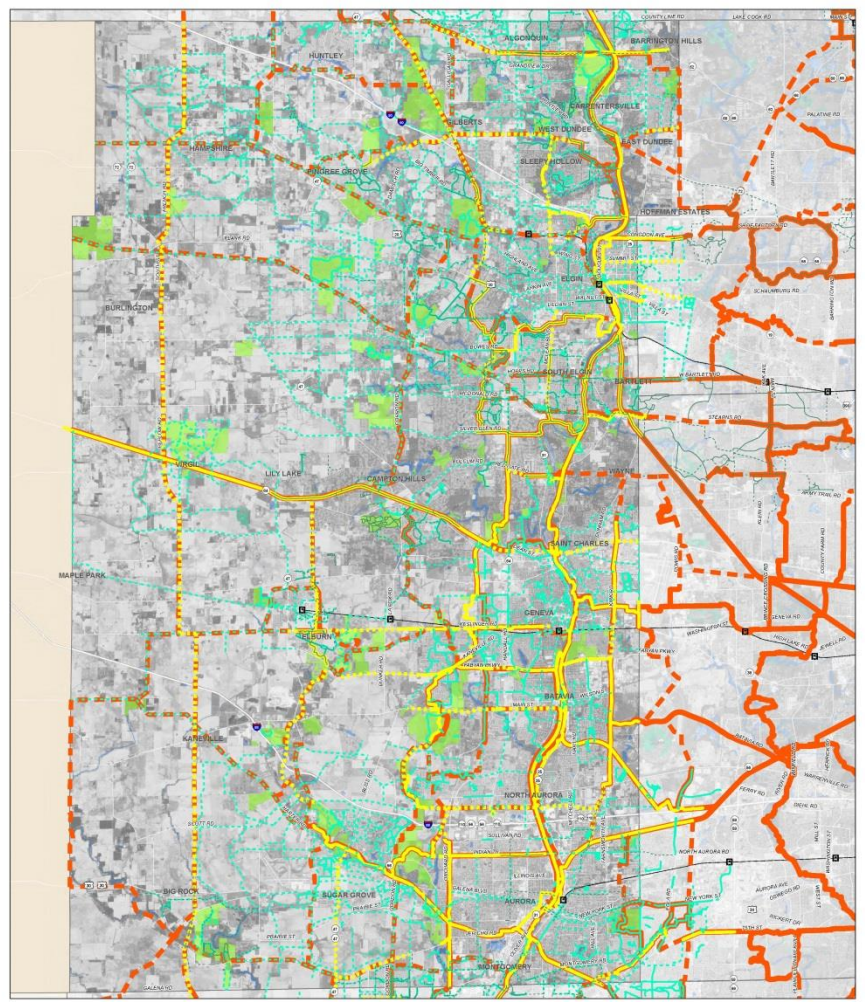


GREENWAYS & TRAILS PLAN UPDATE

Stakeholder Input Process

- Review 2009 plan for each county/council
- COMPARE WITH SUBSEQUENT LOCAL AND SUBREGIONAL TRAIL PLANS
- Prepare draft map of additions, realignments, and deletions
- Meet with county DOTs, FPDs, and subregional councils to revise drafts

Kane County - Existing Trails Plans



2009 Greenways and Trails Plan	— Metra Lines
— Existing; Programmed	▣ Metra Stations
- - - Future; Planned	
KKCOM 2015 Bike Plan	■ Forest Preserve District of Kane County
— Existing Regional	GIV 2.3 Core Landscapes
- - - Planned Regional	■ Core lakes and streams
— Existing Local	■ Core wetlands
- - - Planned Local	
Municipal Bike Plans	
— Existing	
- - - Planned	

0 0.5 1 2 3 4 5 Miles

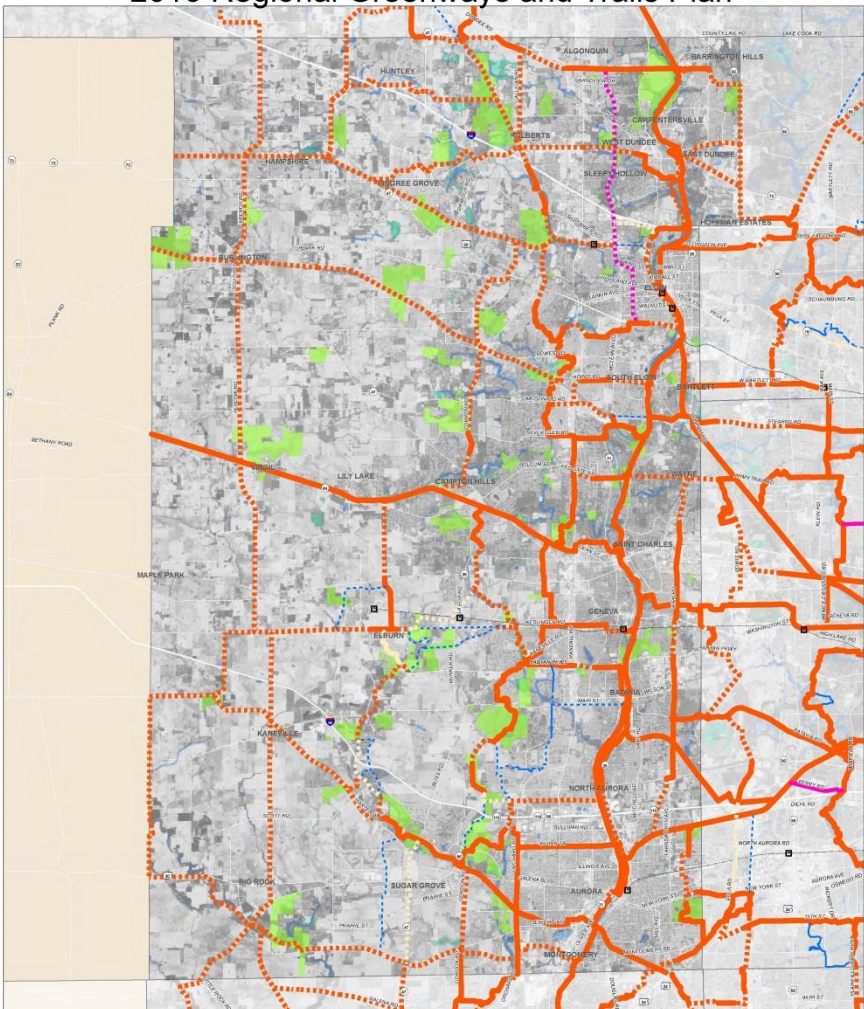


GREENWAYS & TRAILS PLAN UPDATE

Stakeholder Input Process

- Review 2009 plan for each county/council
- Compare with subsequent local and subregional trail plans
- **PREPARE DRAFT MAP OF ADDITIONS, REALIGNMENTS, AND DELETIONS**
- Meet with county DOTs, FPDs, and subregional councils to revise drafts

Kane County - Proposed Changes for 2016 Regional Greenways and Trails Plan



Proposed 2016 Greenways and Trails Plan

- Unchanged Existing Trail
- Unchanged Planned Trail
- Additional Existing Trail
- Additional Proposed Trail
- Deleted Existing Trail
- Deleted Planned Trail
- Realigned Existing Trail
- Realigned Proposed Trail

— Metra Lines
■ Metra Stations

Forest Preserve District of Kane County
GIV 2.3 Core Landscapes
Core lakes and streams
Core wetlands

0 0.5 1 2 3 4 5 Miles

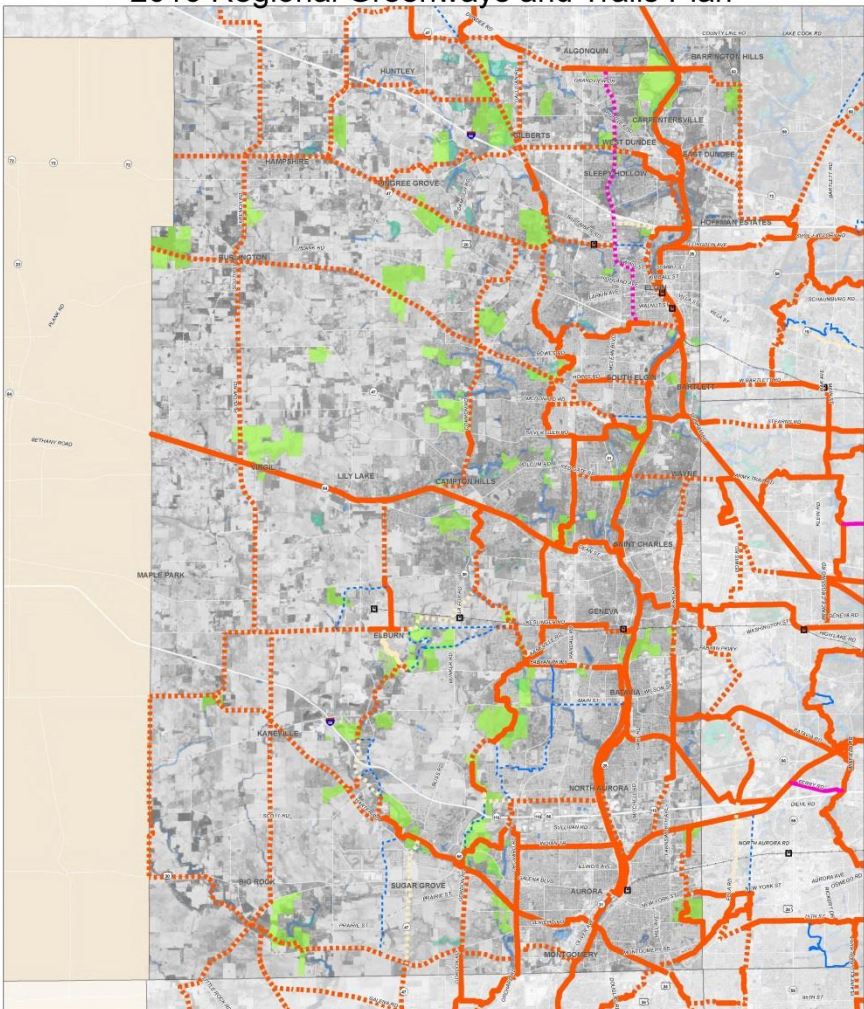


GREENWAYS & TRAILS PLAN UPDATE

Stakeholder Input Process

- Review 2009 plan for each county/council
- Compare with subsequent local and subregional trail plans
- Prepare draft map of additions, realignments, and deletions
- **MEET WITH COUNTY DOTs, FPDs, AND SUBREGIONAL COUNCILS TO REVISE DRAFTS**

Kane County - Proposed Changes for 2016 Regional Greenways and Trails Plan



Proposed 2016 Greenways and Trails Plan

- Unchanged Existing Trail
- Unchanged Planned Trail
- Additional Existing Trail
- Additional Proposed Trail
- Deleted Existing Trail
- Deleted Planned Trail
- Realigned Existing Trail
- Realigned Proposed Trail

— Metra Lines
■ Metra Stations

Forest Preserve District of Kane County
GIV 2.3 Core Landscapes
Core lakes and streams
Core wetlands

0 0.5 1 2 3 4 5 Miles



GREENWAYS AND TRAILS PLAN

<http://www.cmap.illinois.gov/mobility/walking-and-bicycling/greenways-and-trails>

Brian Daly
Associate Planner
bdaly@cmap.illinois.gov
(312) 386-8810

