



GREENWAYS & TRAILS PLAN UPDATE

- Last updated in 2009
- Long-range, multi-jurisdictional plan
- Vision for network of multi-use trails and greenways
- Covers CMAP's seven-county region
- Important role in programming decisions

Northeastern Illinois Regional Greenways and Trails Plan
 2009 Update

GREENWAYS & TRAILS PLAN UPDATE

Timeline

Phase 1: Scoping and data review (October - December 2015)

Phase 2: Stakeholder input on trail recommendations (December 2015 - June 2016)

Phase 3: Map development and review (June - September 2016)

Adoption: CMAP Transportation Committee (October 2016)

1. Data Review 2. Stakeholder Input 3. Map Development

• Bicycle and Pedestrian Task Force Meeting
 + CMAP Transportation Committee Meeting

GREENWAYS & TRAILS PLAN UPDATE

Stakeholder Input Process

- Review 2009 plan for each county/council
- Compare with subsequent local and subregional trail plans
- Prepare draft map of additions, realignments, and deletions
- Meet with county DOTs, FPDs, and subregional councils to revise drafts



GREENWAYS & TRAILS PLAN UPDATE

Stakeholder Input Process

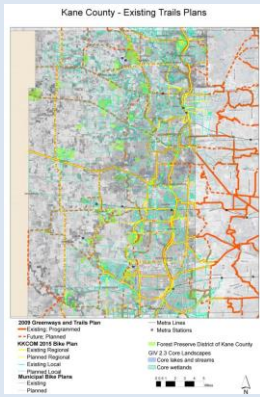
- REVIEW 2009 PLAN FOR EACH COUNTY/COUNCIL
- Compare with subsequent local and subregional trail plans
- Prepare draft map of additions, realignments, and deletions
- Meet with county DOTs, FPDs, and subregional councils to revise drafts



GREENWAYS & TRAILS PLAN UPDATE

Stakeholder Input Process

- Review 2009 plan for each county/council
- COMPARE WITH SUBSEQUENT LOCAL AND SUBREGIONAL TRAIL PLANS
- Prepare draft map of additions, realignments, and deletions
- Meet with county DOTs, FPDs, and subregional councils to revise drafts



GREENWAYS & TRAILS PLAN UPDATE

Stakeholder Input Process

- Review 2009 plan for each county/council
- Compare with subsequent local and subregional trail plans
- PREPARE DRAFT MAP OF ADDITIONS, REALIGNMENTS, AND DELETIONS**
- Meet with county DOTs, FPDs, and subregional councils to revise drafts

GREENWAYS & TRAILS PLAN UPDATE

Stakeholder Input Process

- Review 2009 plan for each county/council
- Compare with subsequent local and subregional trail plans
- Prepare draft map of additions, realignments, and deletions
- MEET WITH COUNTY DOTs, FPDs, AND SUBREGIONAL COUNCILS TO REVISE DRAFTS**

GREENWAYS & TRAILS PLAN UPDATE

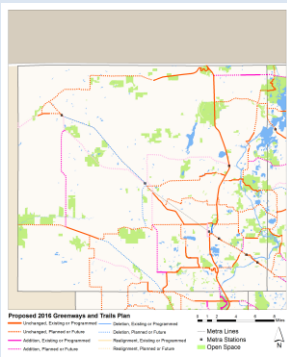
Proposed Trail Map

County	RGTP System Miles, 2009	RGTP System Miles, 2016	Additional Miles
Cook	743	986	243
DuPage	278	307	29
Grundys (Part)	12	13	1
Kane	381	396	15
Kendall	240	242	2
Lake	353	437	84
McHenry	201	238	37
Will	511	541	30
Total	2719	3160	441

GREENWAYS & TRAILS PLAN UPDATE: LAKE COUNTY

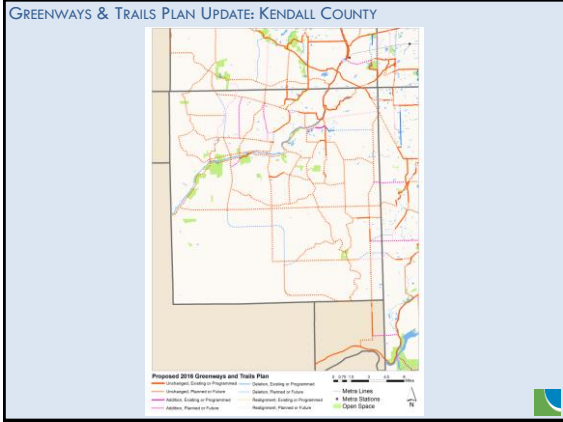


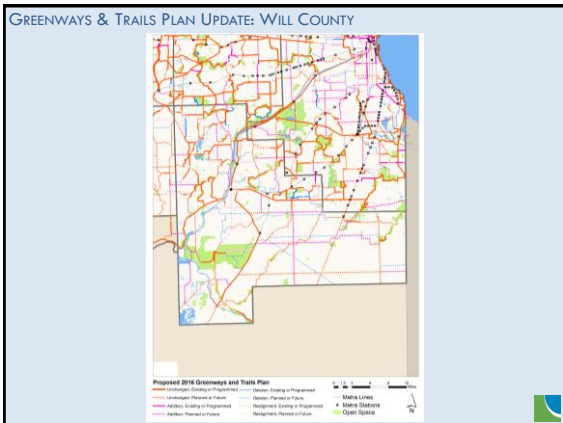
GREENWAYS & TRAILS PLAN UPDATE: MCHENRY COUNTY

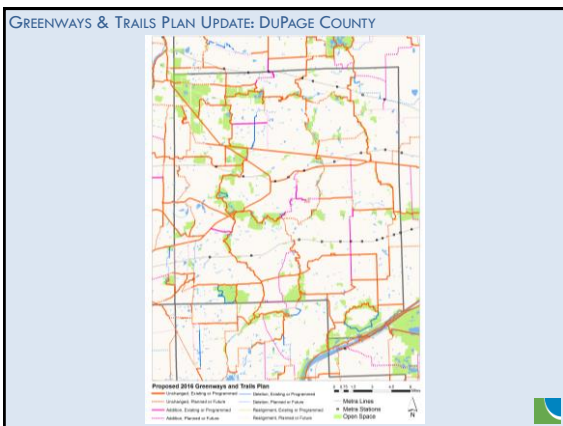


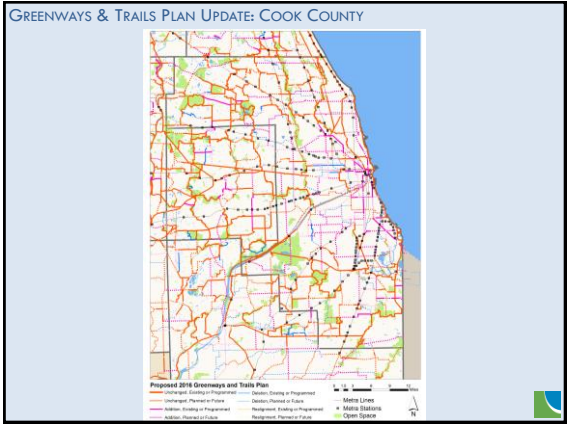
GREENWAYS & TRAILS PLAN UPDATE: KANE COUNTY

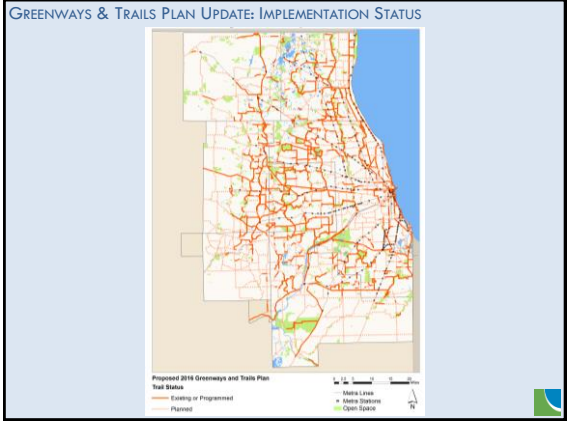












GREENWAYS AND TRAILS PLAN
<http://www.cmap.illinois.gov/mobility/walking-and-bicycling/greenways-and-trails>

Brian Doly
 Associate Planner
 bdoly@cmap.illinois.gov
 (312) 386-8810
