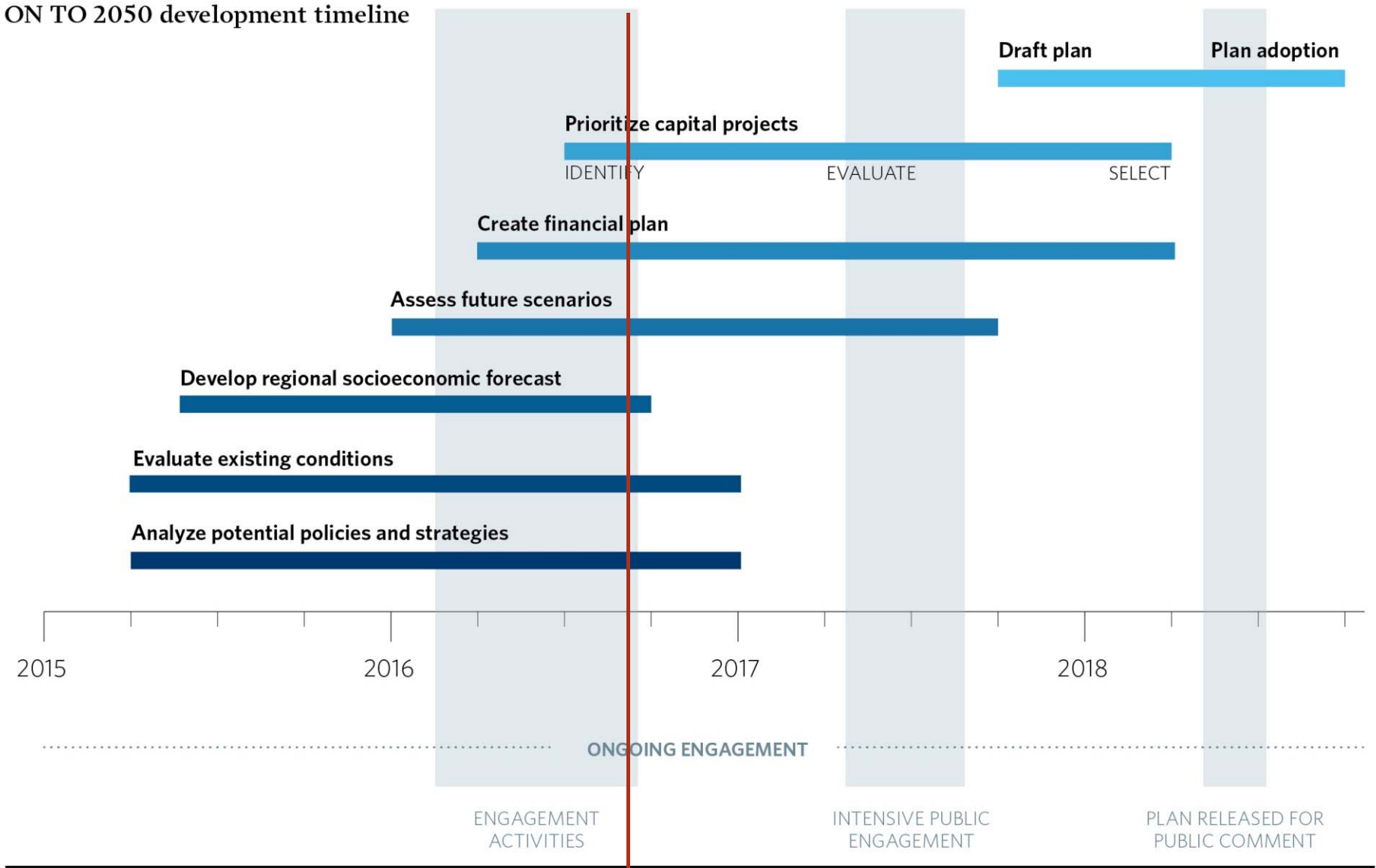


# Local Area Allocation Process

Environment and Natural Resources Committee  
October 6, 2016

# ON TO 2050 timeline

ON TO 2050 development timeline



**We are here**

# Why forecast?

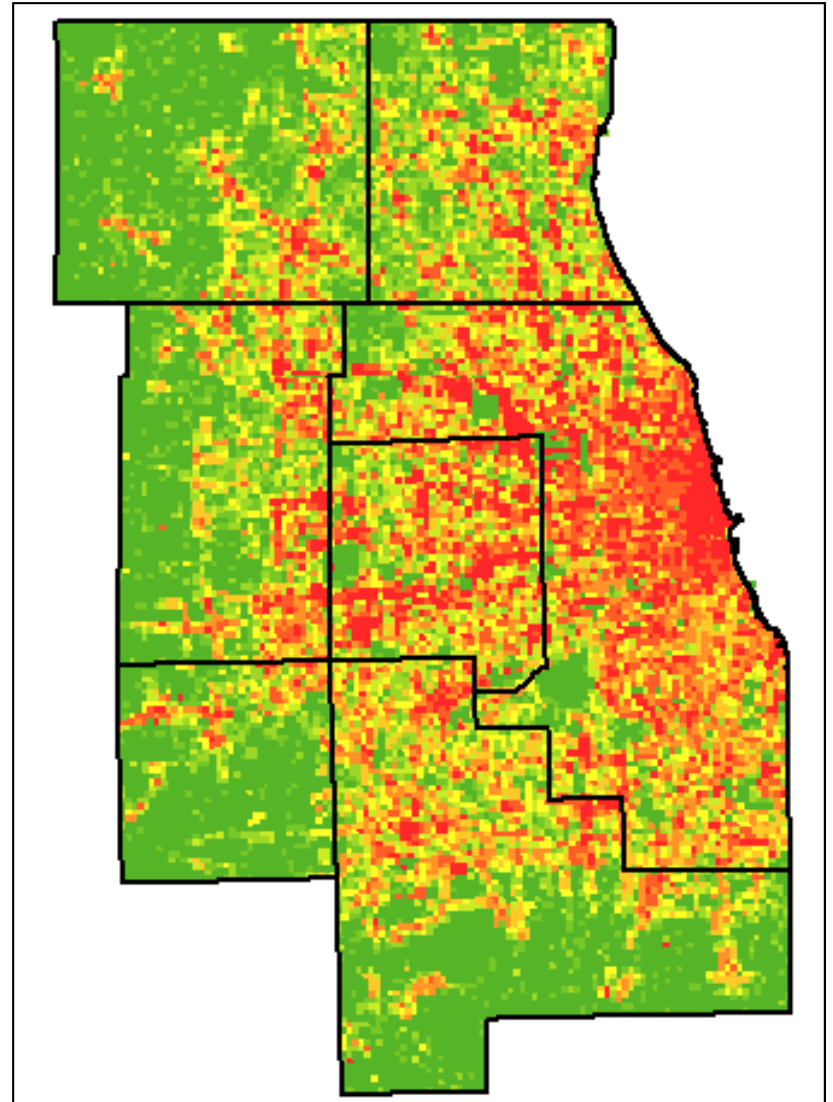
“The MPO shall review and update the transportation plan...to confirm the transportation plan's validity and consistency with current and forecasted transportation and land use conditions and trends and to extend the forecast period to at least a 20-year planning horizon.”

*(Electronic Code of Federal Regulations, Title 23/Chapter 1/Subchapter E/Part 450. <http://www.ecfr.gov>)*

# What is the local area allocation?

The local area allocation process applies the region's 2050 socioeconomic forecast to the local level based on market conditions, economic analysis, and plan recommendations

2040 Employment by Subzone



# How is the local area allocation used?

- County, subarea, and municipal forecasts through 2050
- Assessment of regionally significant projects
- Assist planning efforts region-wide

## **GO TO 2040 (2010)**

- Socioeconomic total apportioned to the local level based on the Preferred Regional Scenario
- Modeling of land use & transportation strategies that increase land value or accessibility

## **GO TO 2040 Plan Update (2014)**

- Updated population, land use, employment, and development data and re-directed associated growth

# ON TO 2050 local area allocation approach

- Provide some demographic, economic, and time series detail to aid CMAP and local jurisdictions in their planning efforts
- Incorporate the recommendations of GO TO 2040
- Incorporate best practices from peer regions and the industry overall

# ON TO 2050 local area allocation approach

- Spreadsheet-based tool informed by spatial data
- Incorporates land use, economic, and planning factors
  - Trends such as population and employment change
  - Existing conditions such as land use, planned projects, or property value
  - Account for accessibility to transit, highway, and employment
  - Planning priorities such as reinvestment, preserving high quality natural areas, promoting locally-appropriate increases in density near transit stations, etc.
- Balances increased population and employment with the potential capacity of a given area



# Expanded forecast data available at the local level

- Subset of all variables developed for the regional forecast, but an expansion from GO TO 2040
- Anticipated variables:
  - Time series with 5-year intervals
  - Total housing units and households
  - Population in households (adults, children, workers)
  - Householder under 35, aged 35-64, and over 64
  - Employment categories

# Committee engagement

- Socioeconomic total (Sept/Oct)
- Local area allocation process (Sept/Oct)
- Factors and policies (Nov)
- Initial results (Feb)

# Additional stakeholder engagement

- **Workshop 1: Factors and strategies (Nov)**
  - Interested committee members, county planning staff, etc
  - Offer feedback on the trends, factors, and strategies driving the tool
- **Initial review of totals with counties and major stakeholders (Jan/Feb)**
  - Review beta version of the local area allocation tool
- **Workshop 2: Initial results (Feb)**
  - Interested committee members, county planning staff, etc
  - Provide feedback on initial results

# Questions?

**Liz Schuh**

**[eschuh@cmap.illinois.gov](mailto:eschuh@cmap.illinois.gov)**

**Principal Policy Analyst**

**Learn more at [cmap.illinois.gov/onto2050](https://cmap.illinois.gov/onto2050)**