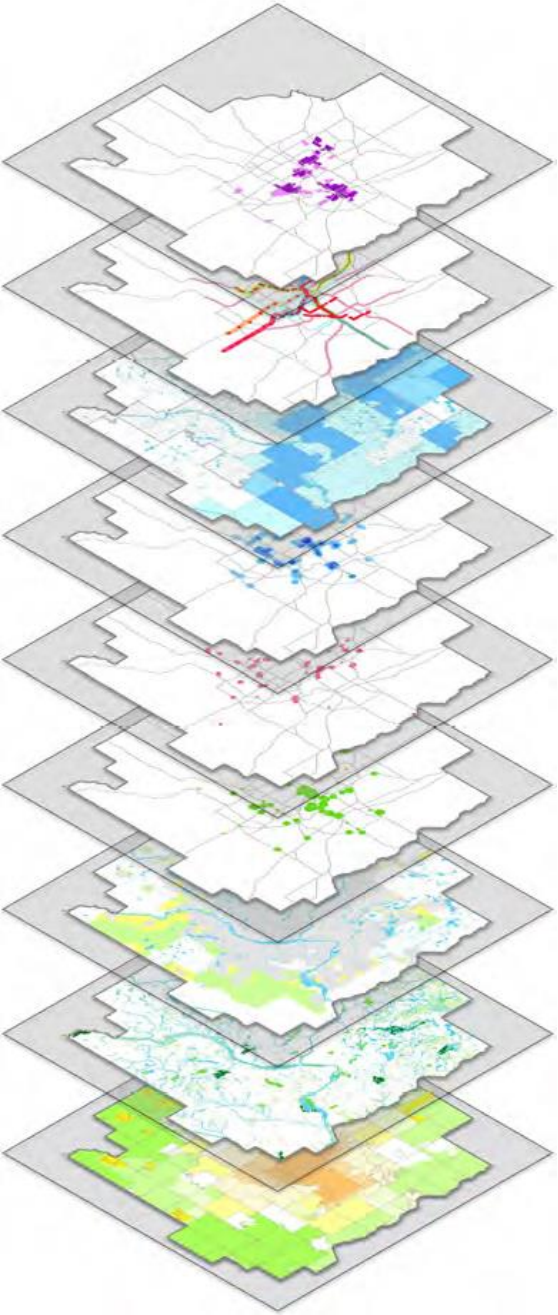


# Place-Based Planning Strategies Conservation Areas Layer

Environment and Natural Resources Committee  
January 5, 2017

# Conservation Areas Layer



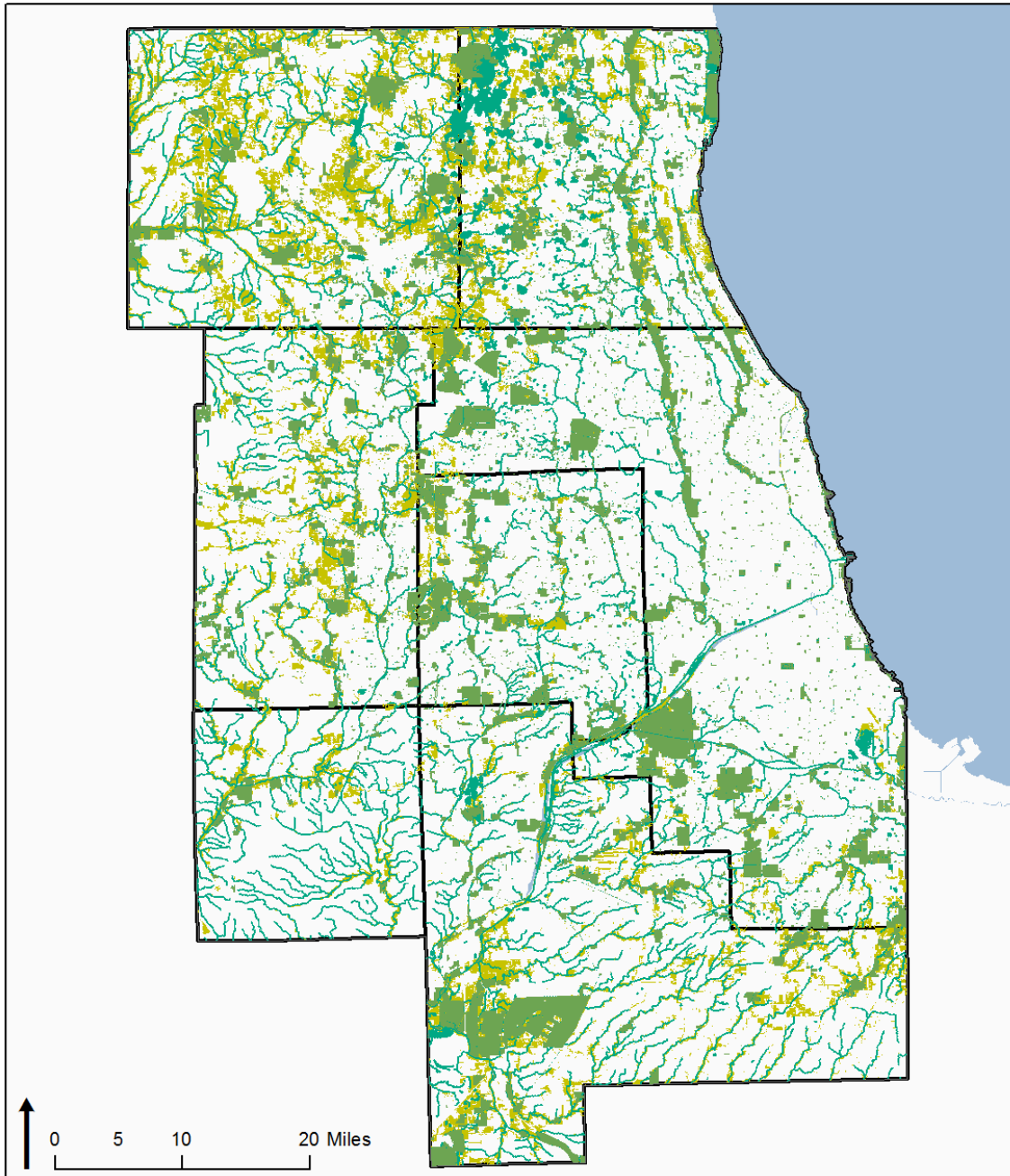
## LAYERS BACKGROUND

- Place-based framework for ON TO 2050
- Used to depict and analyze regional characteristics
- Will inform sub-regional recommendations and guidance

## PILOT LAYERS

- Locally Identified Reinvestment Areas
- Conservation Areas

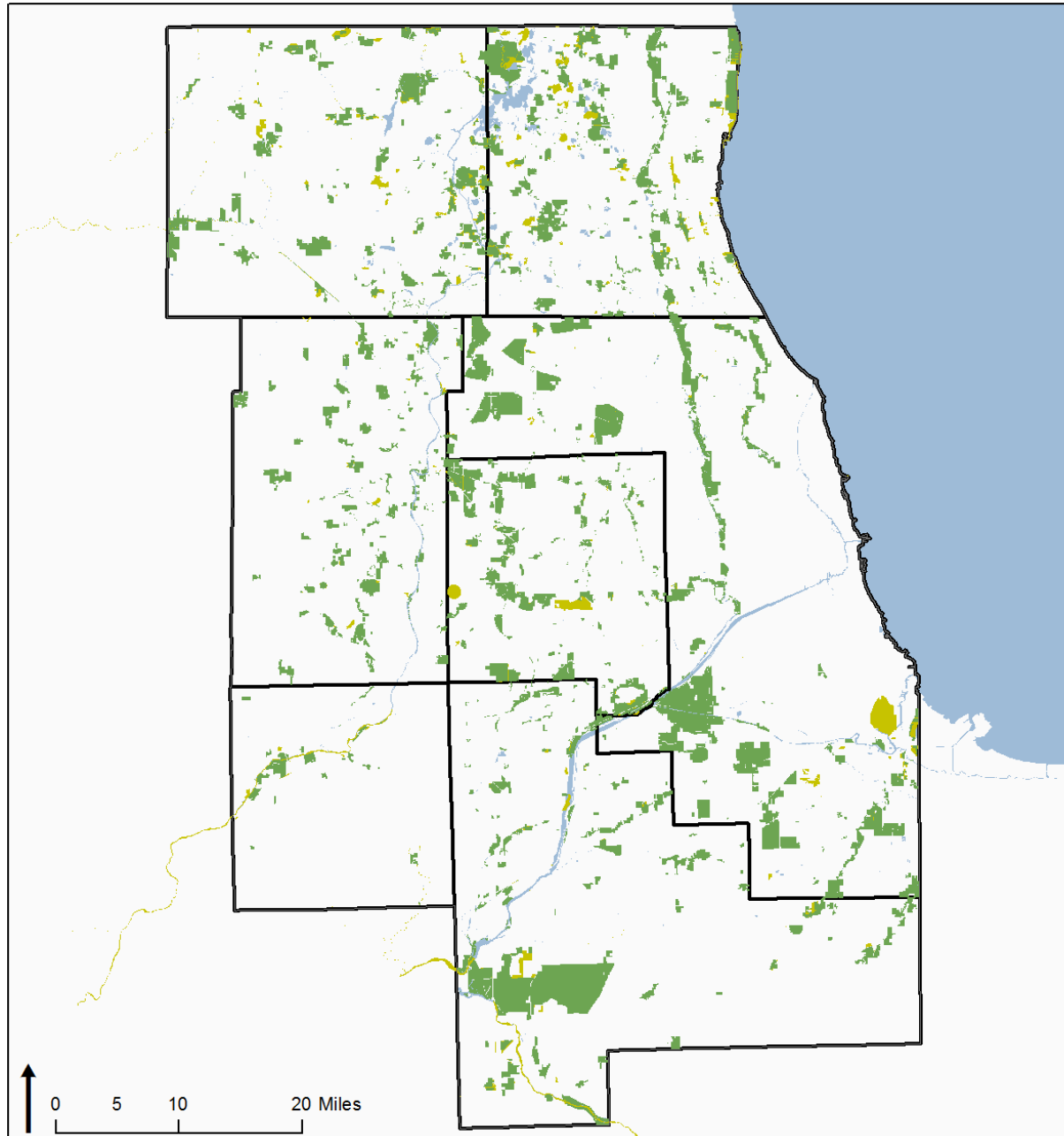
# Conservation Areas Layer






## Green Infrastructure Vision 2.2/2.3

- HubLayer: Protected Lands
- Hub Layer: Composite with Stream Buffers
- Hub Layer: Ecological Networks
- Lake Michigan

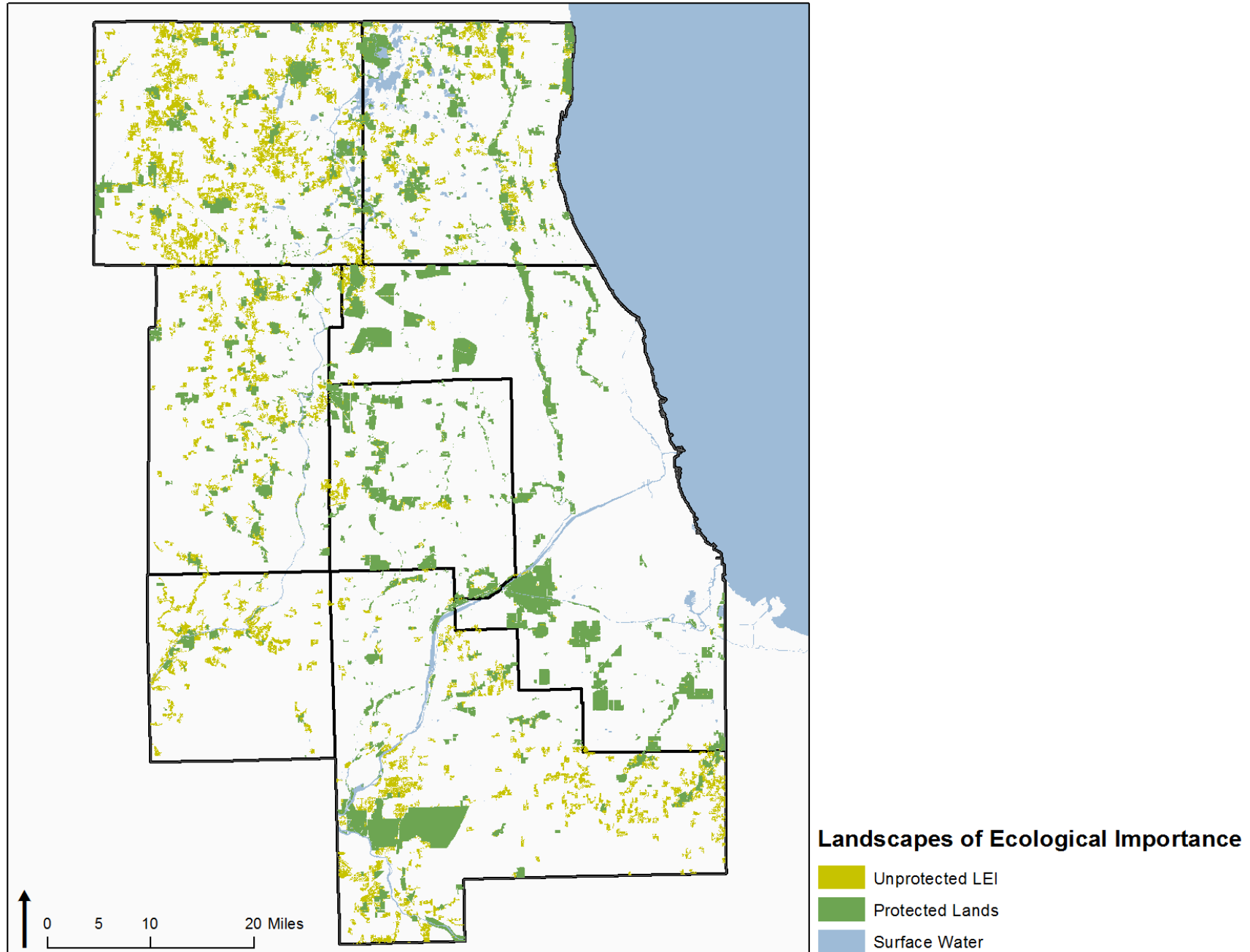
# Conservation Areas Layer



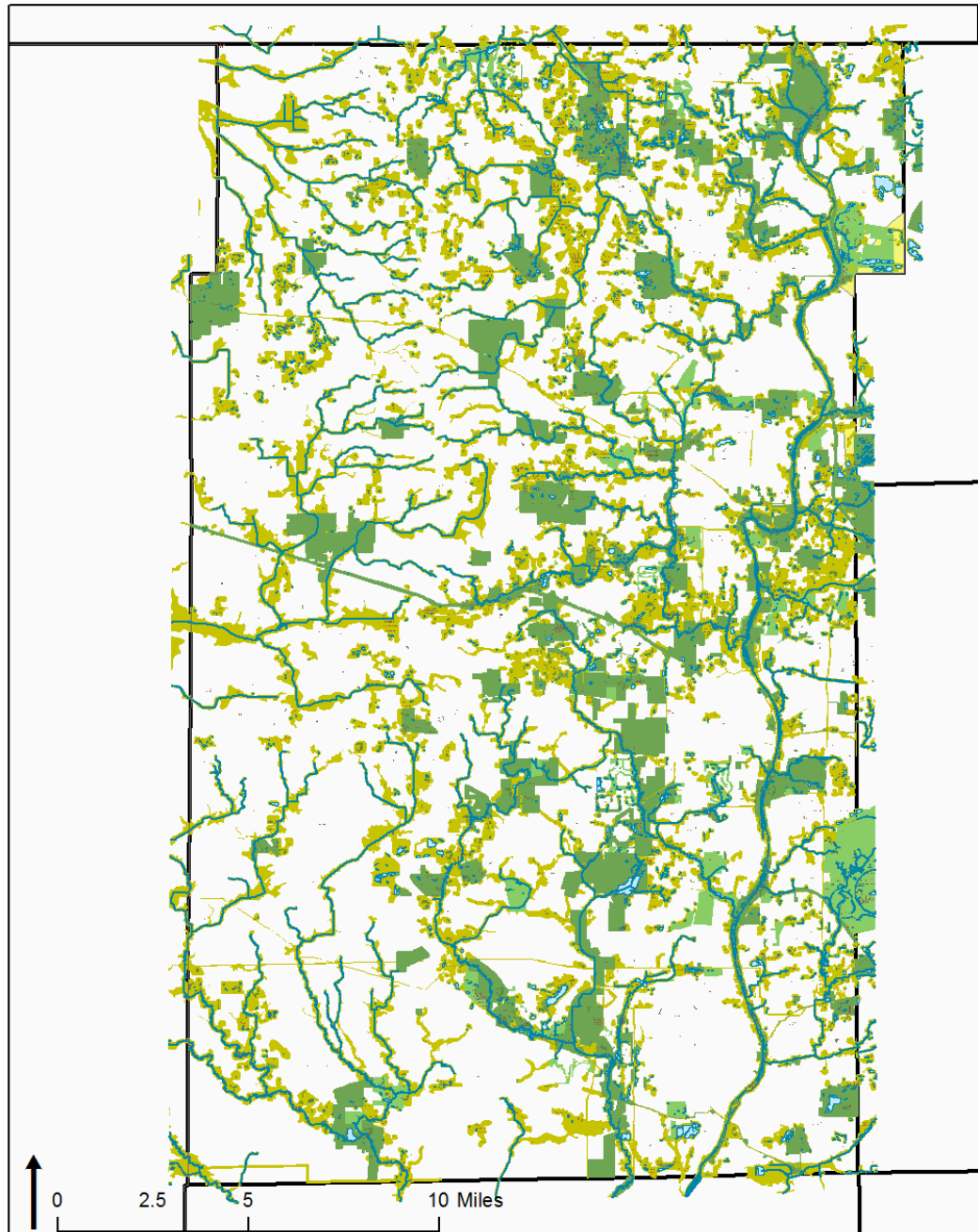
## IL Natural Areas Inventory

-  Unprotected INAI Lands
-  Protected Lands
-  Surface Water









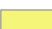
# Conservation Areas Layer



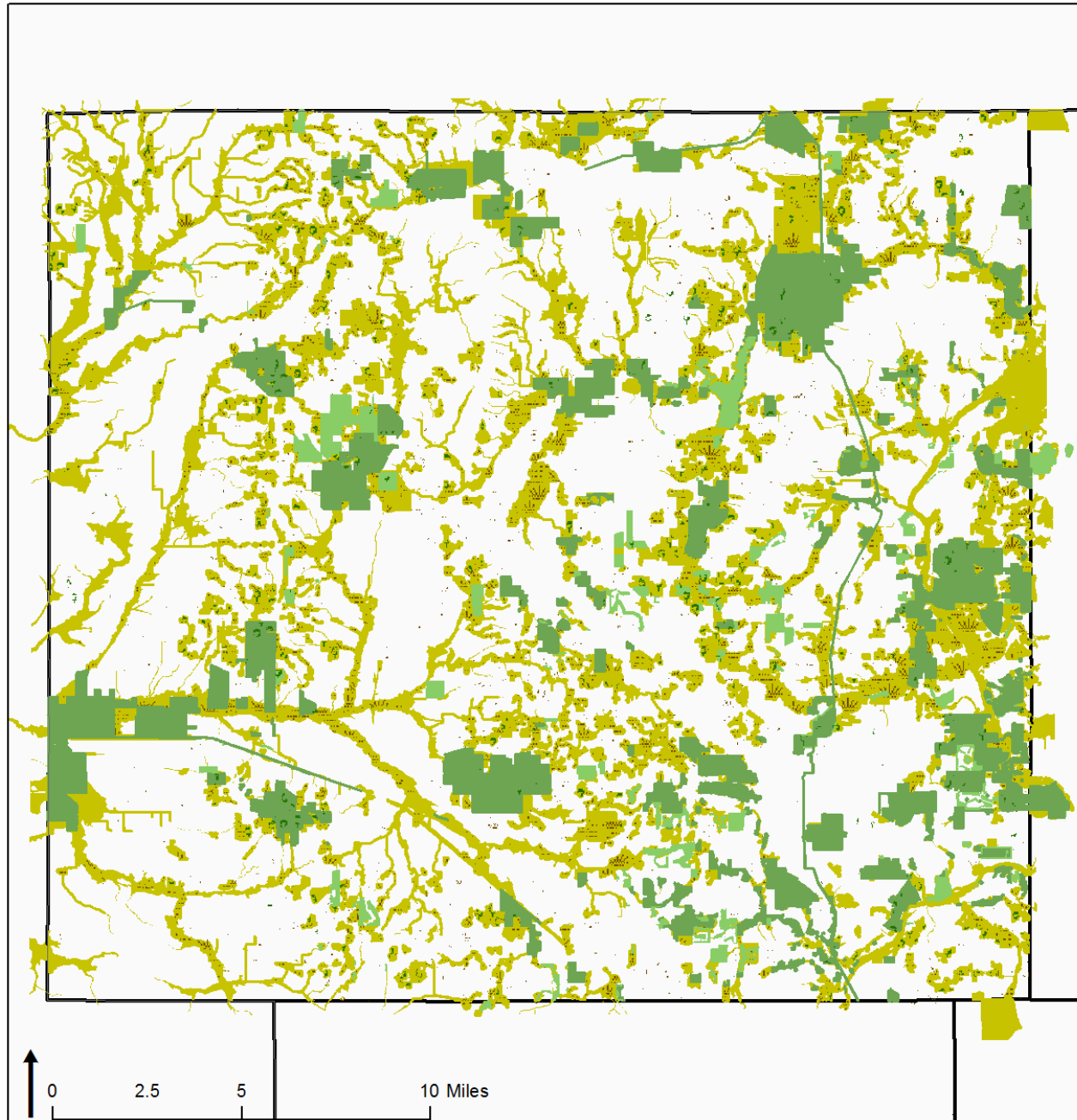
# Conservation Areas Layer



## Kane County Green Infrastructure Plan

-  Fox River
-  Creeks
-  Water
-  Wetlands
-  2011 Kane Remnant Oaks
-  Public Open Space
-  Private Open Space
-  Environmental Resource Areas
-  Class 3 Groundwater Areas

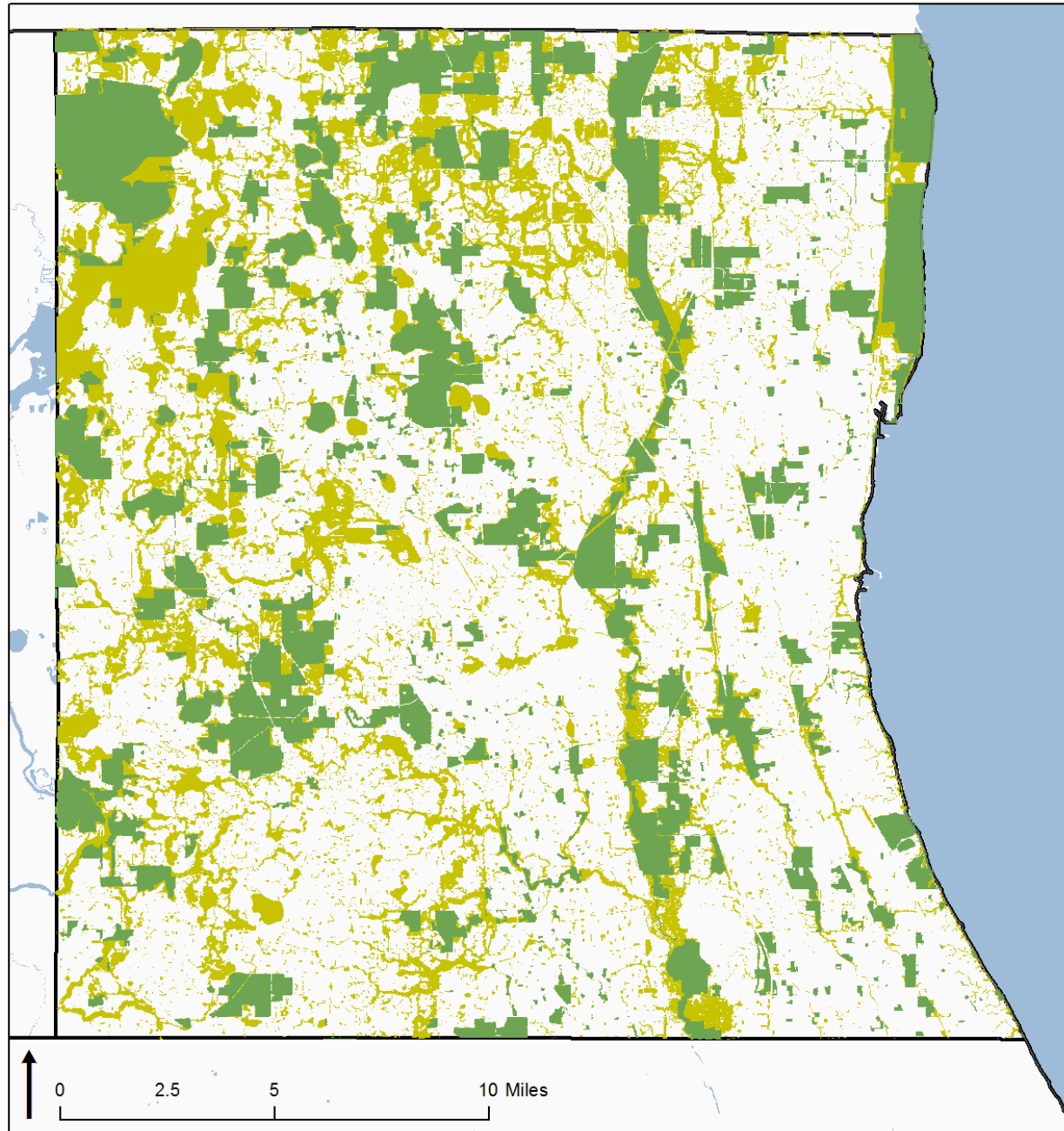
# Conservation Areas Layer






## McHenry County Green Infrastructure Plan

-  2005 Oaks
-  All Wetlands
-  Public Open Space
-  Private Open Space
-  Environmental Resource Areas

# Conservation Areas Layer

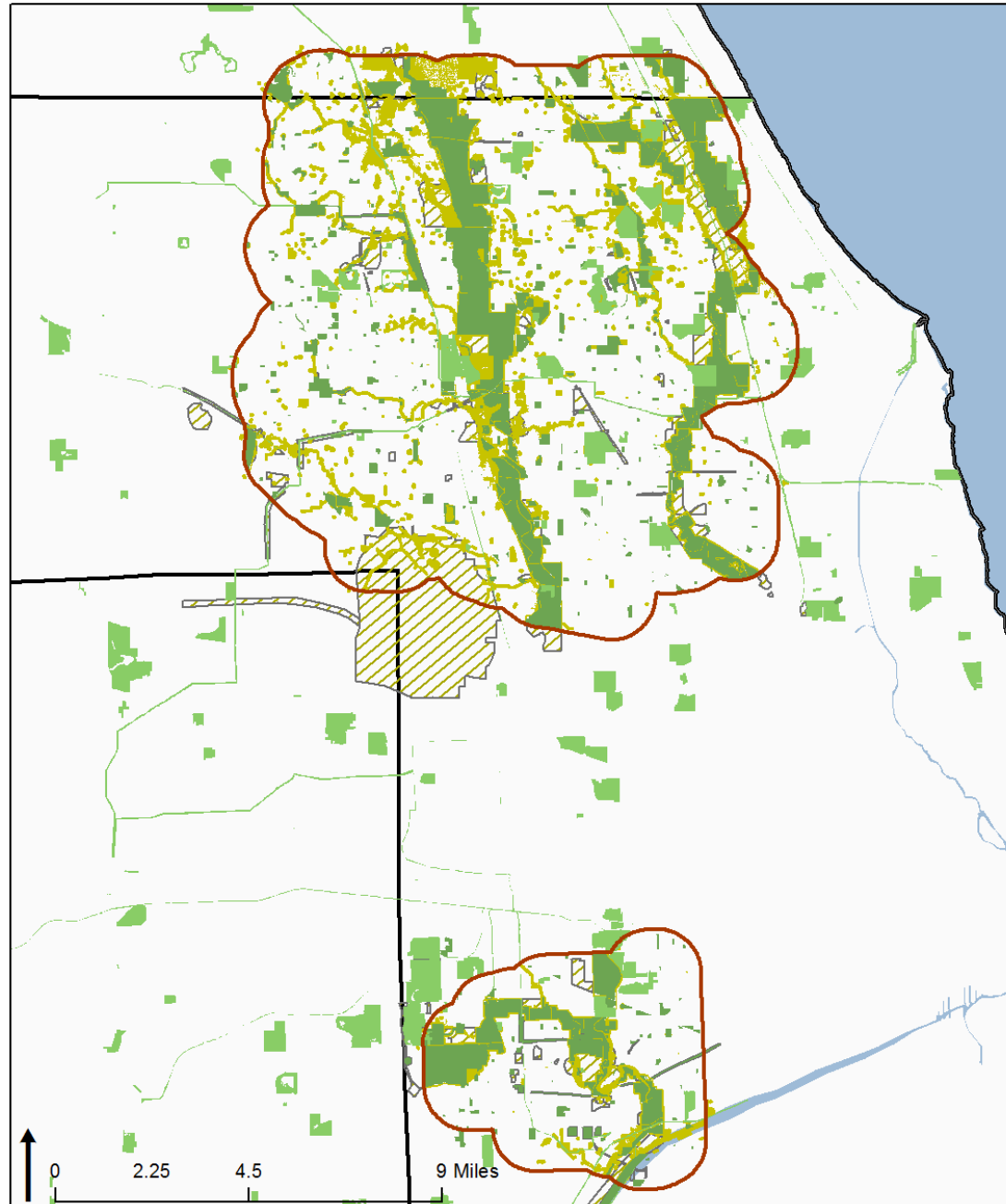


## Lake County Green Infrastructure Strategy

-  Hub Layer: Protected Lands
-  Hub Layer: Ecological Networks and Stream Buffers
-  Surface Water



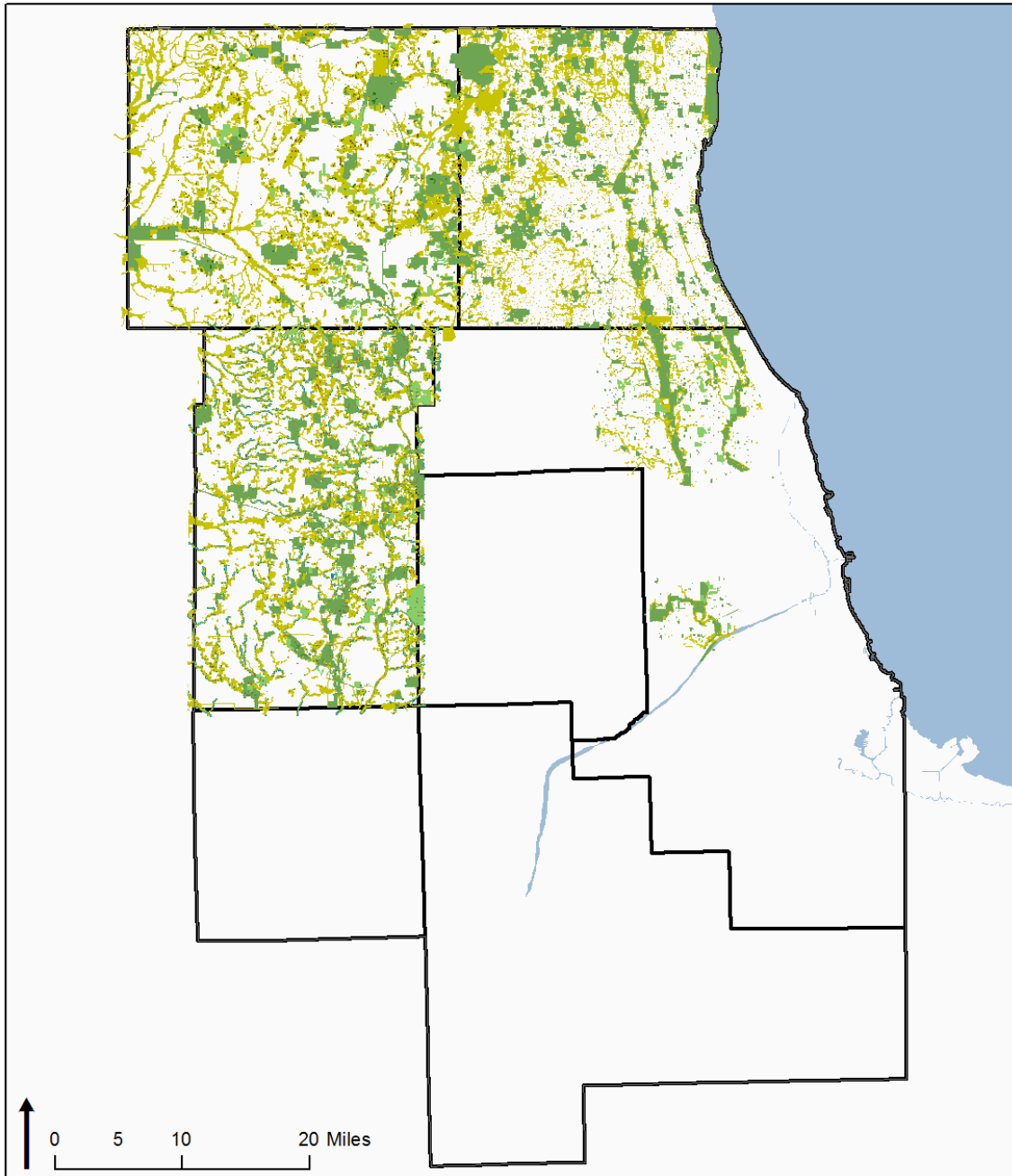
# Conservation Areas Layer



## Des Plaines River Communities Green Infrastructure

- Area of Interest
- Public Open Space
- Private Open Space
- Environmental Resource Area
- Opportunity Areas
- Lake Michigan

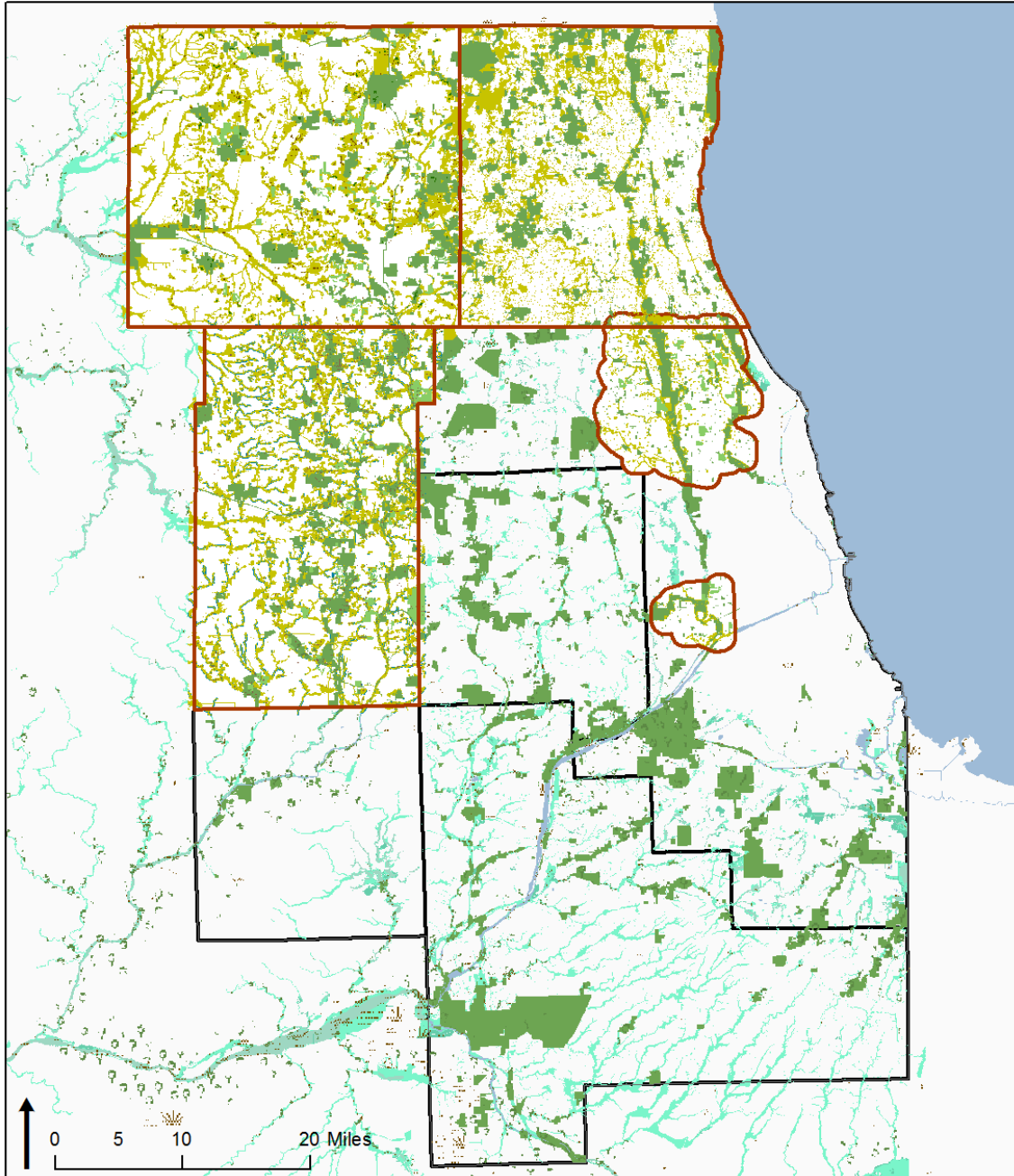
# Conservation Areas Layer



## Composite Local and Regional Green Infrastructure Plans

-  Wetlands
-  Oaks
-  Public Open Space
-  Private Open Space
-  Environmental Resource Areas

# Conservation Areas Layer



## Composite Local and Regional Green Infrastructure Plans

- Wetlands
- Oaks
- Public Open Space
- Private Open Space
- Environmental Resource Areas

## Included Resource Types for Areas without Plans

- Floodway
- 100-Year Floodplain
- 500-Year Floodplain
- Wetlands
- Oaks
- Protected Land

## Discussion Questions

- Is stitching together subregional plans the right approach?
- How should the layer address areas with overlapping plans?
- How should the layer address areas with no subregional plan?