

# **Non-Motorized Transportation Snapshot**

Environment and Natural Resources Committee

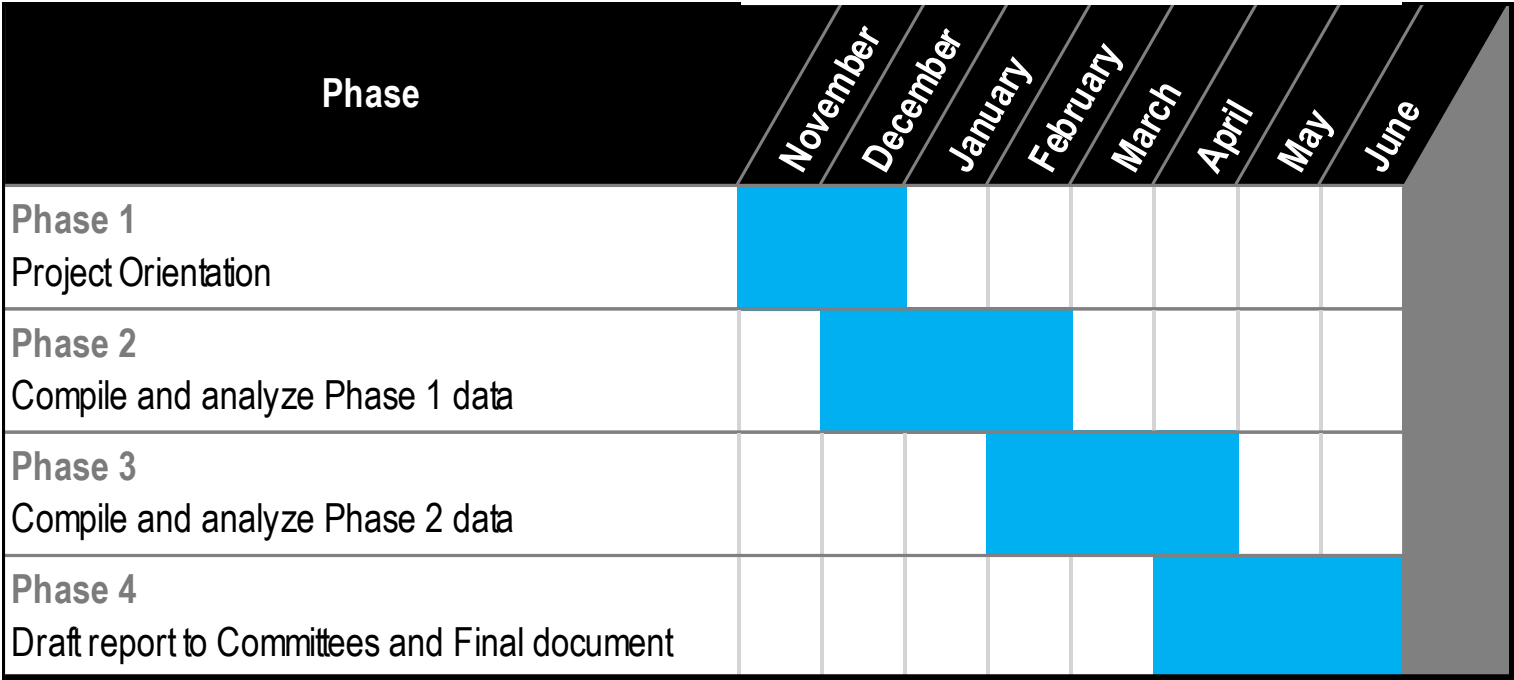
February 2, 2017



# Purpose and Structure of Snapshot

- Provide an overview of existing conditions and trends in non-motorized transportation in the region, focusing on trends and developments since 2010.
- Two phases of analysis:
  - Phase 1: Analysis of broad trends in bicycling and walking
    - Bicycle facilities
    - Pedestrian facilities
    - Equity
    - Safety
    - Economic development
  - Phase 2: Detailed analysis of NMT trends and growth areas

# Timeline



# Key Research Questions

## Bicycle facilities

- How have regional bicycle facilities been expanded since 2010?
- Are there new facility designs that are increasing in popularity ?
- How has ridership been affected?



Credit: David Wilson, Flickr Creative Commons

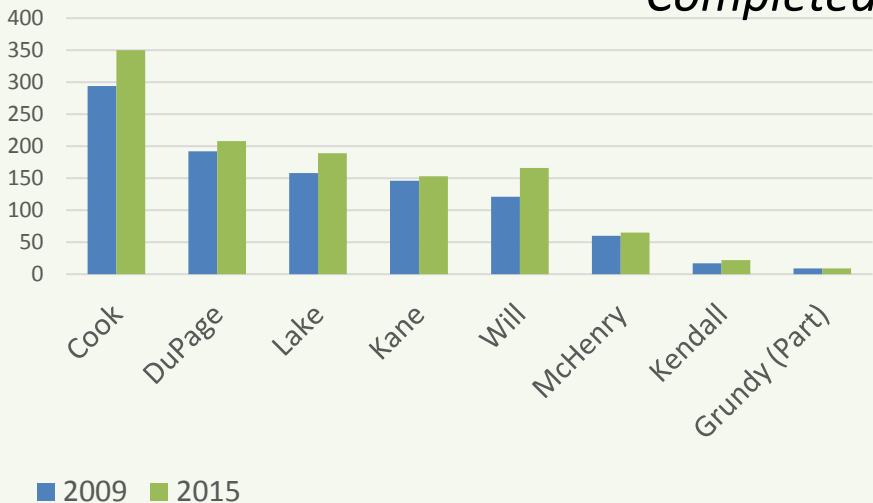


Credit: CDOT

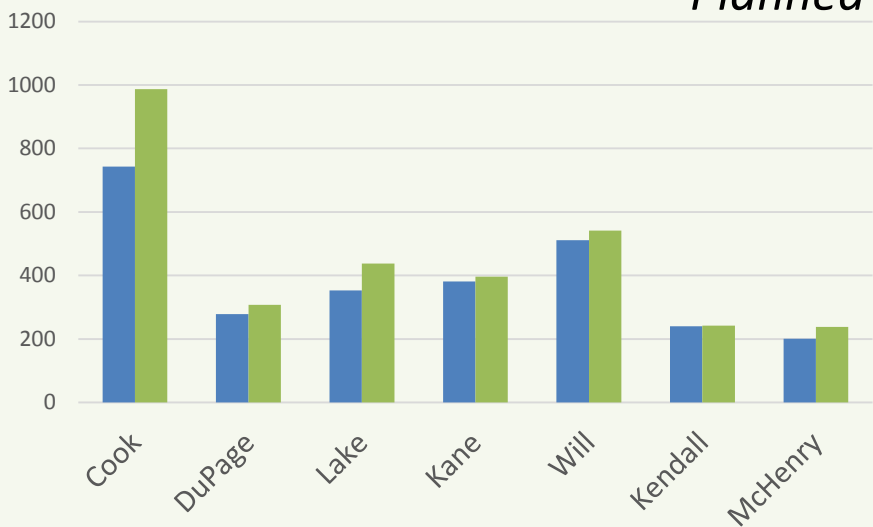


# Regional Greenways and Trails (2009 and 2015)

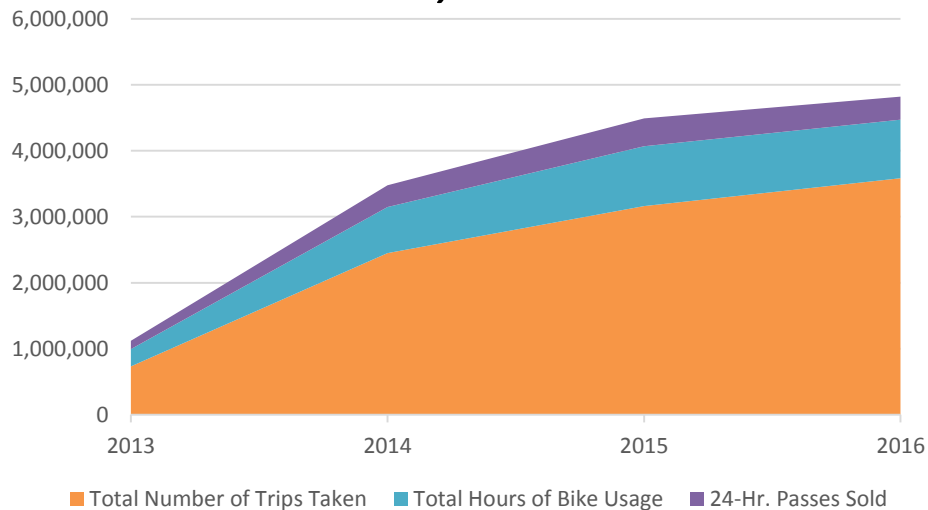
## Completed



## Planned



## Divvy Metrics



## Bicycle Friendly Communities

Prior to 2012	2012	2013	2014	2015	2016
<b>Chicago</b>	<b>Evanston</b>	<b>Batavia</b>		<b>Glenview</b>	<i>Evanston</i>
<b>Schaumburg</b>		<b>Elmhurst</b>		<b>Oak Park</b>	<i>Schaumburg</i>
<b>Naperville</b>		<i>Naperville</i>		<b>Warrenville</b>	<b>Aurora</b>
				<i>Chicago</i>	<b>Highland Park</b>
					<b>Glen Ellyn</b>

<b>Silver</b>	<i>Renewed</i>
<b>Bronze</b>	
<b>Honorable mention</b>	

# Key Research Questions

## Pedestrian facilities

- Have there been innovations in pedestrian treatments in the region since 2010?
- How are communities improving ADA accommodations?



Credit: Eli Naeher



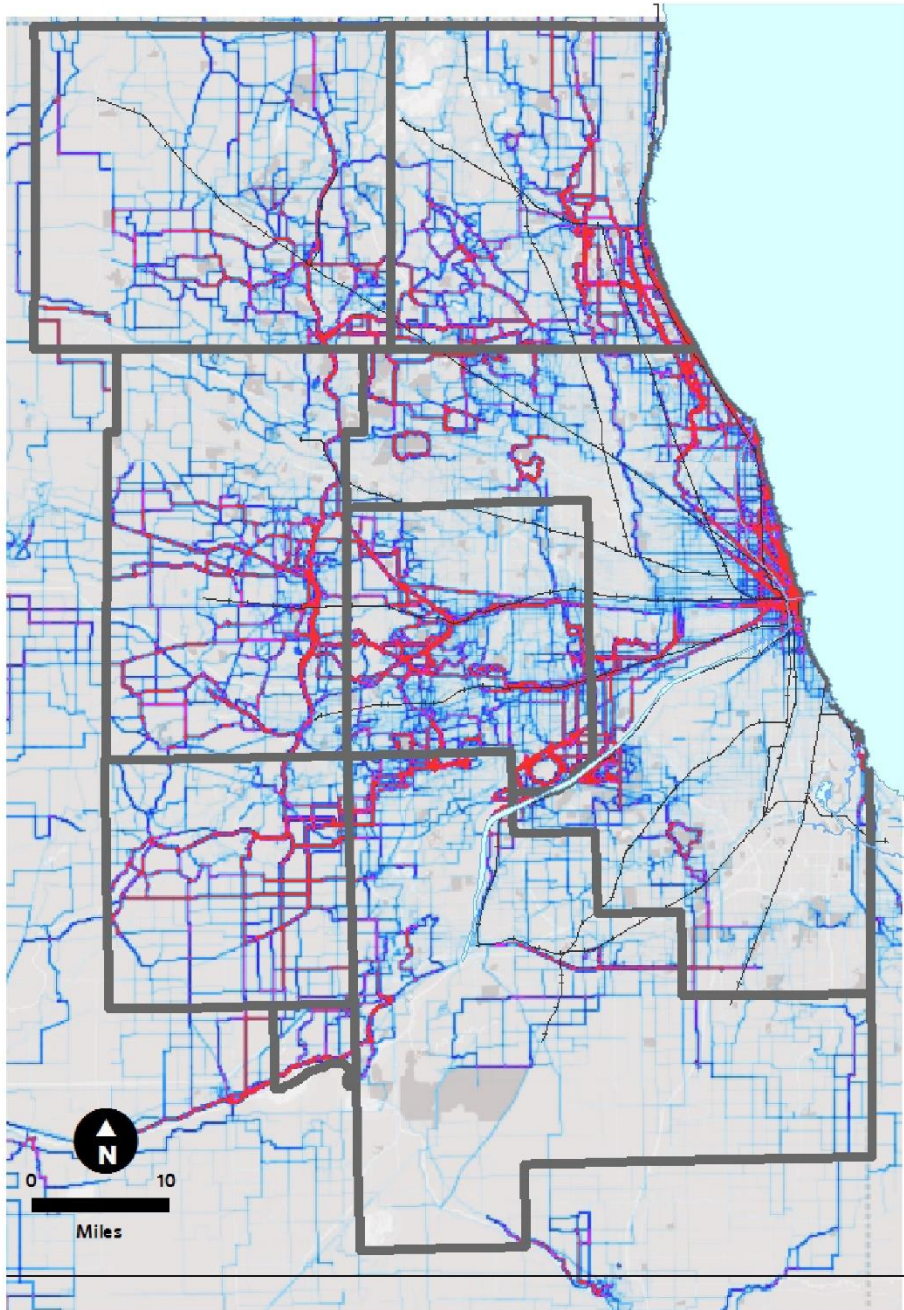
Credit: 48<sup>th</sup> Ward

# Key Research Questions

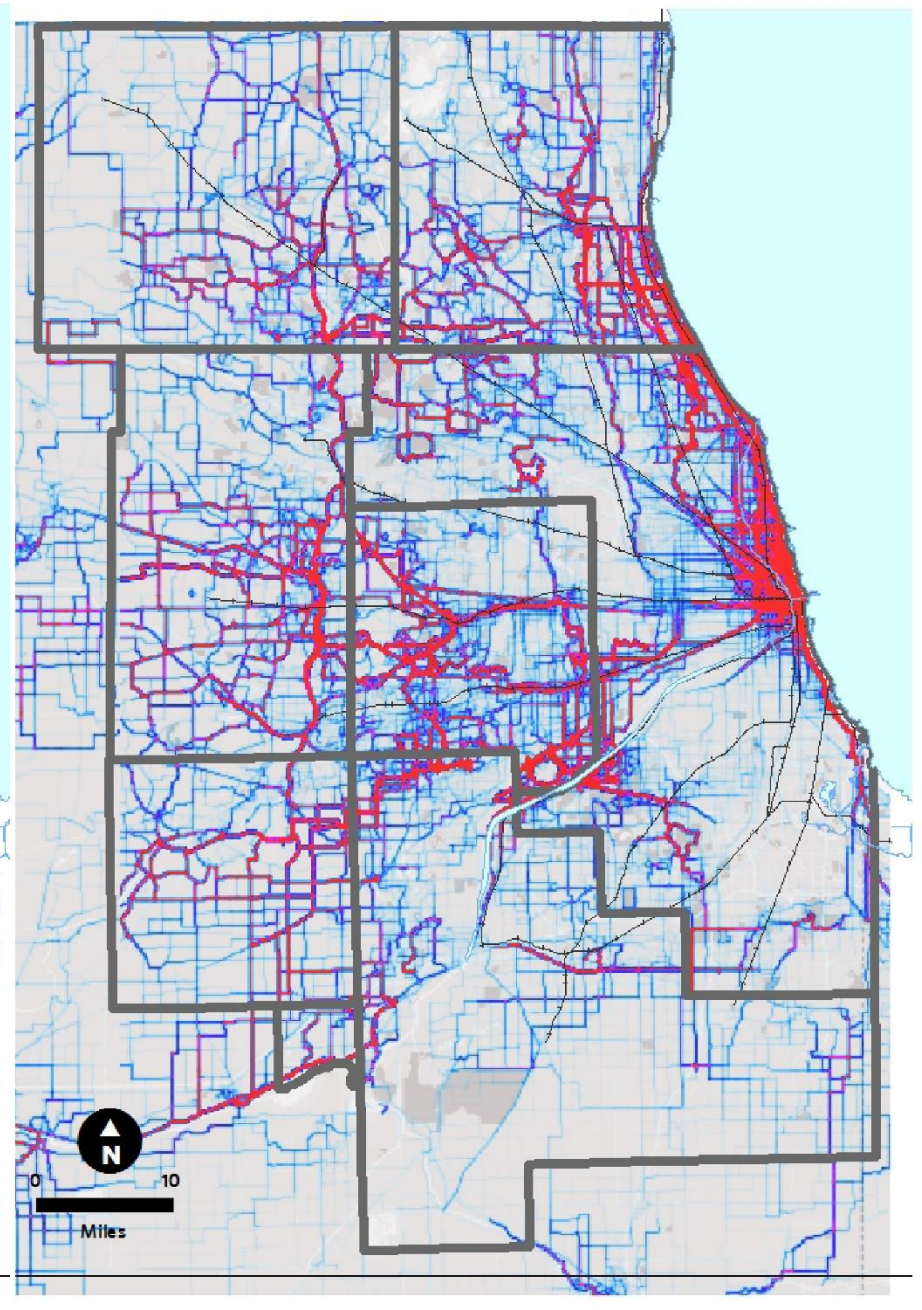
## Equity

- Are there demographic trends reflected in safety for people walking and biking, such as income levels, race and ethnicity, population density, mode share breakdown?
- Where are crashes occurring?

2014 Strava data

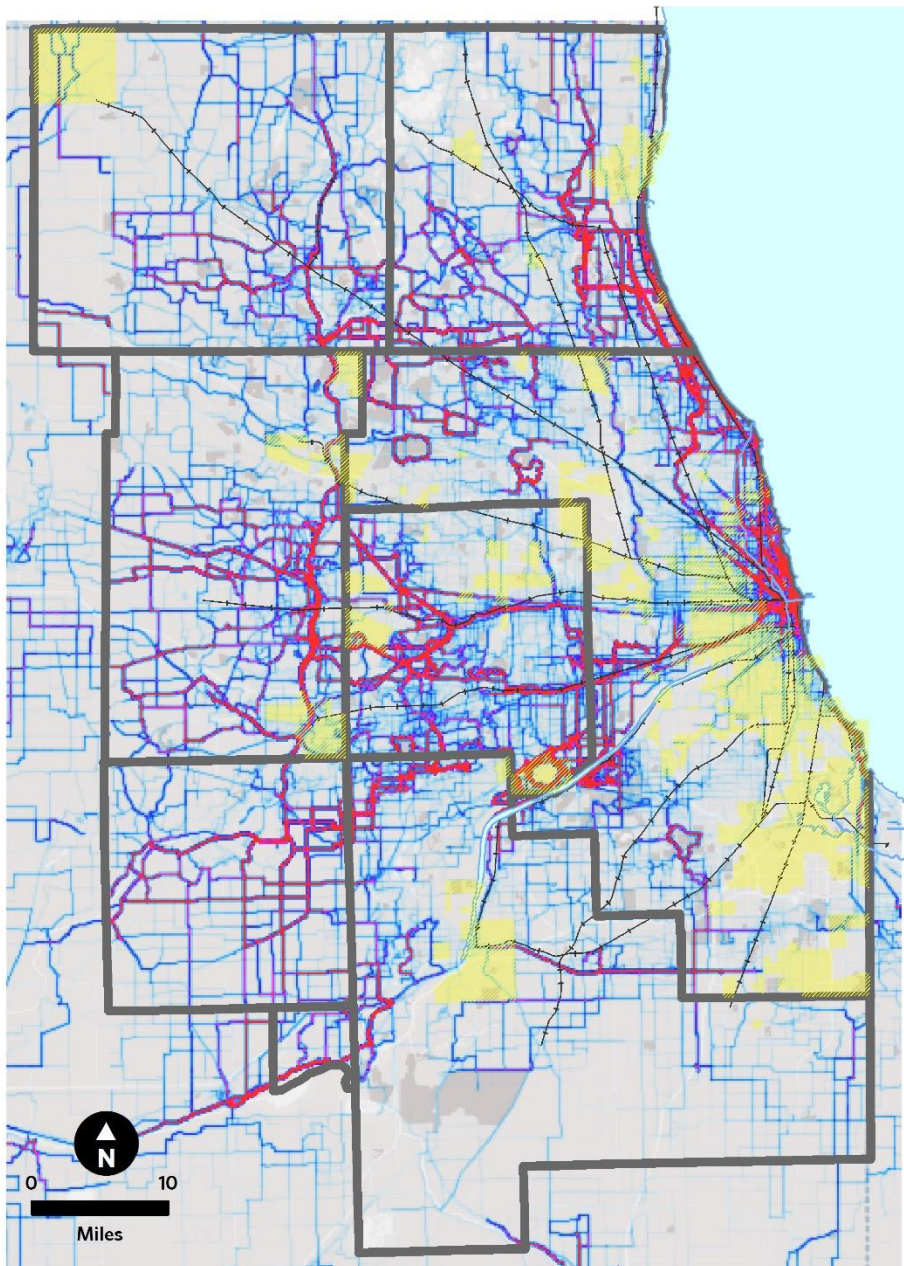


2015 Strava data

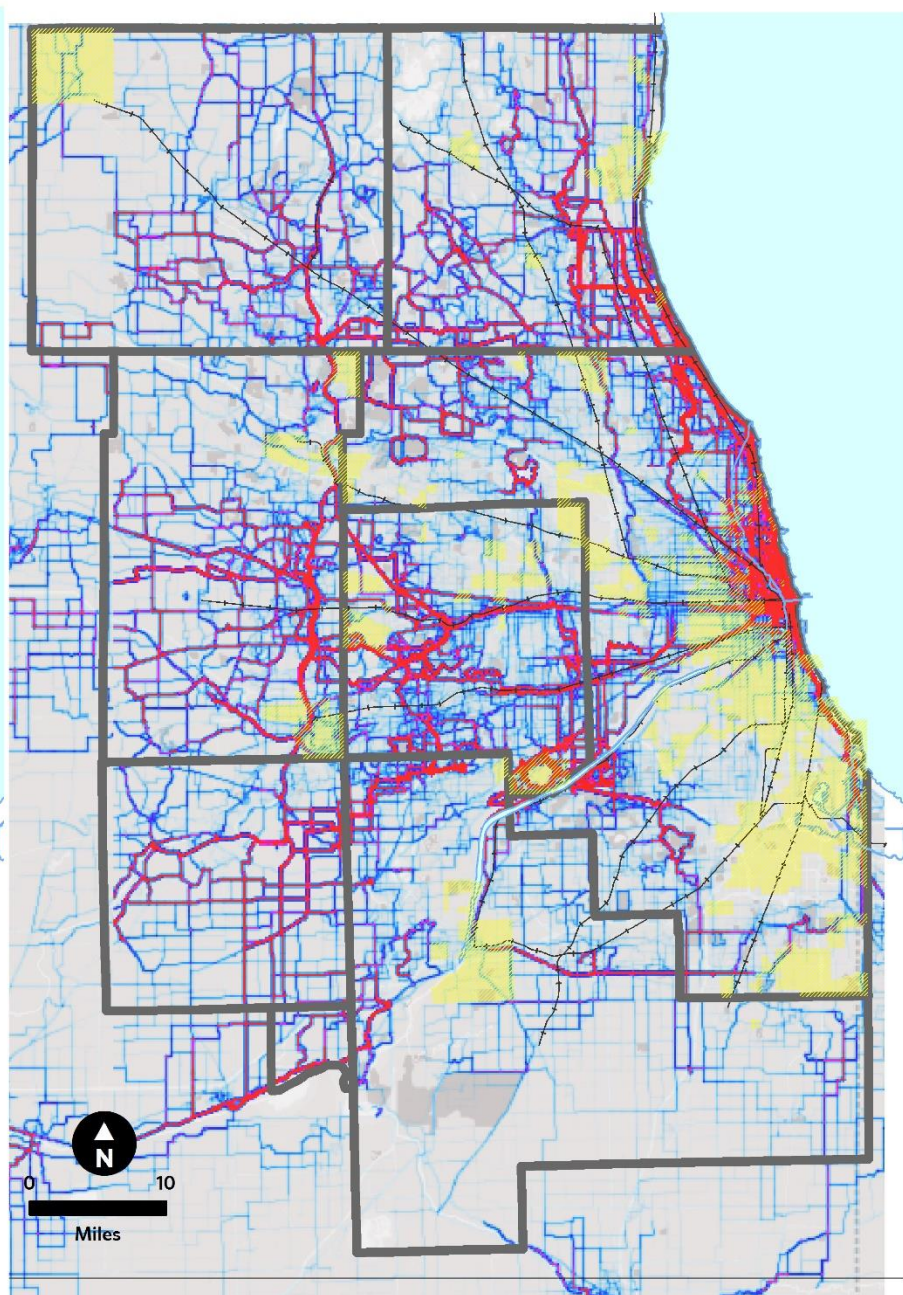




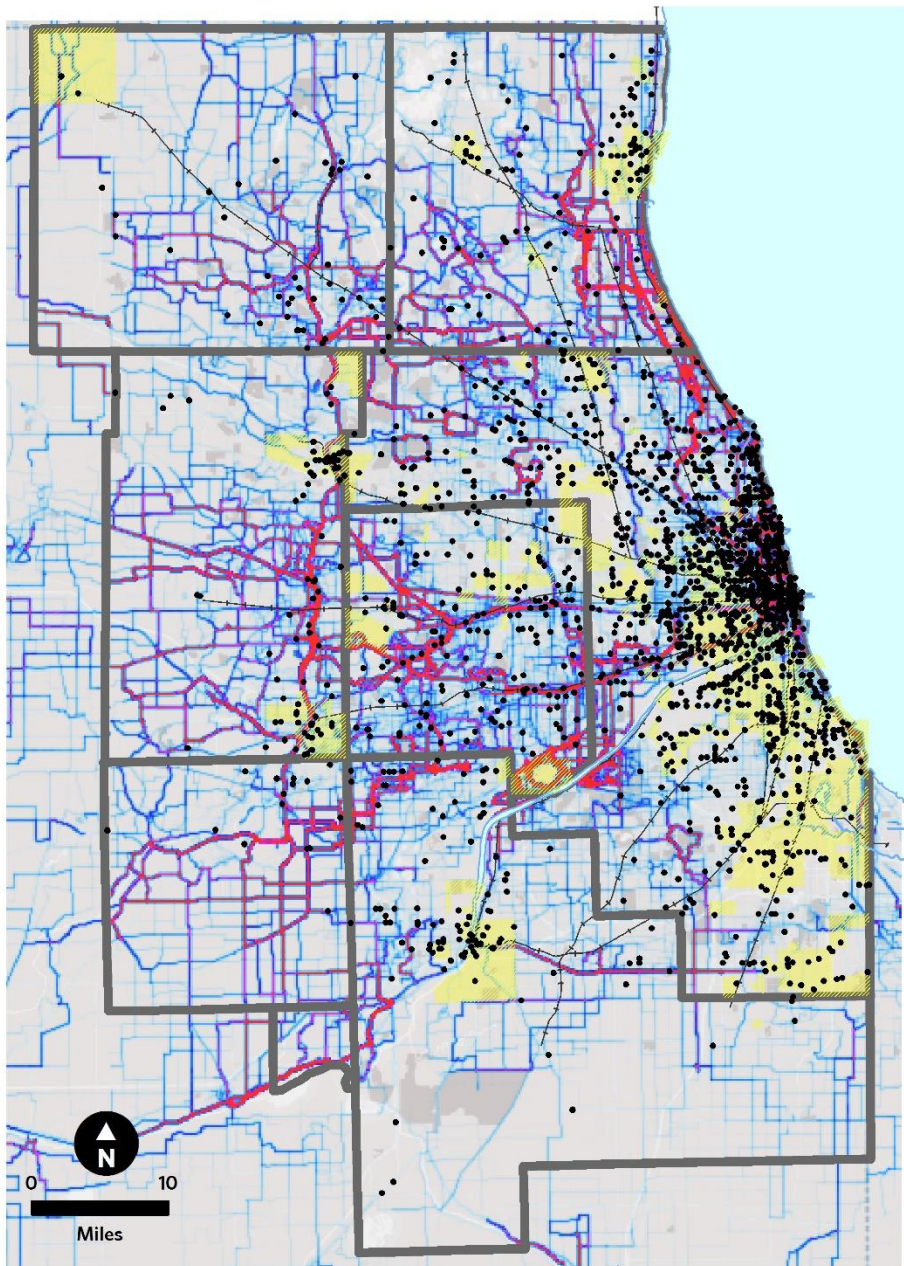
2014 Strava data



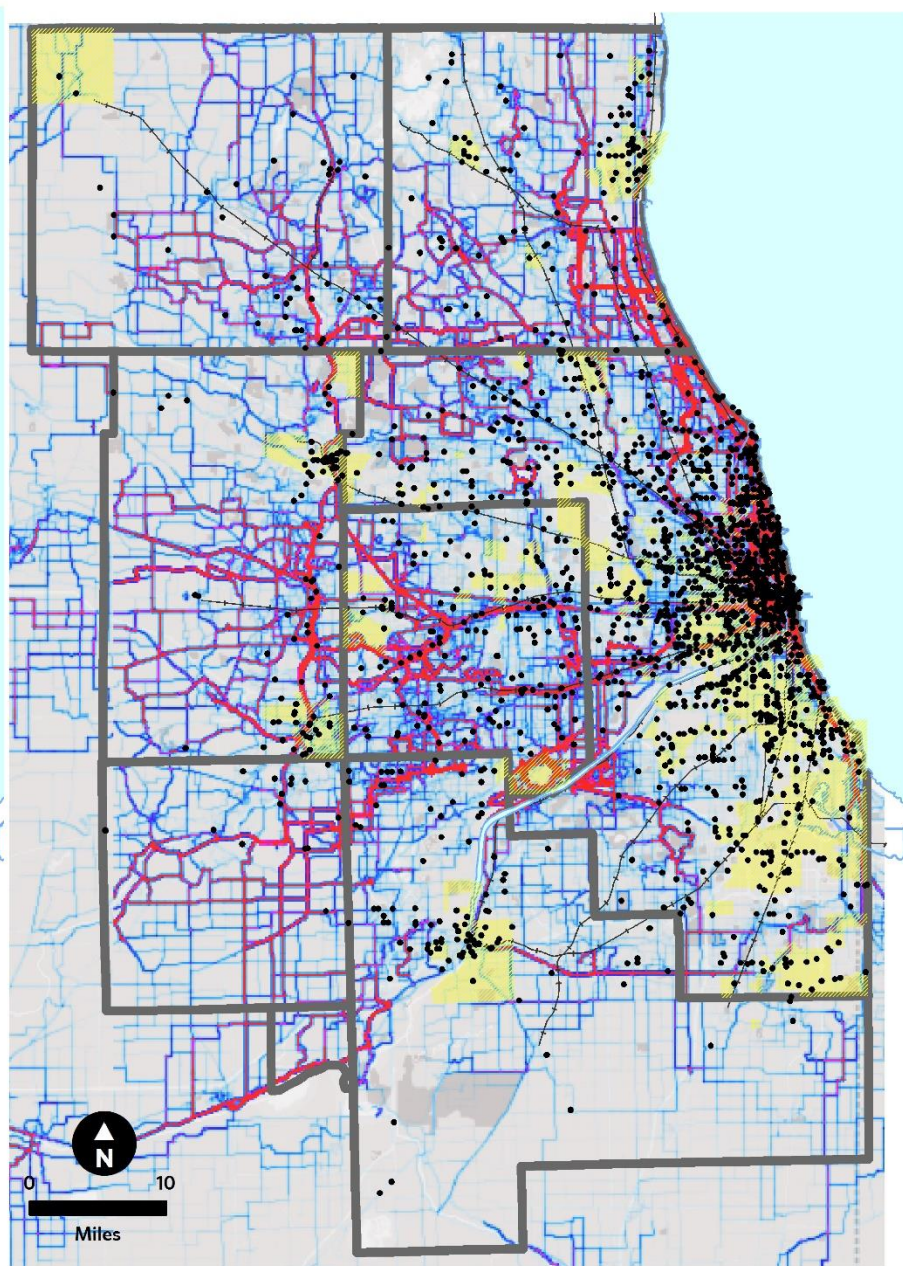
2015 Strava data



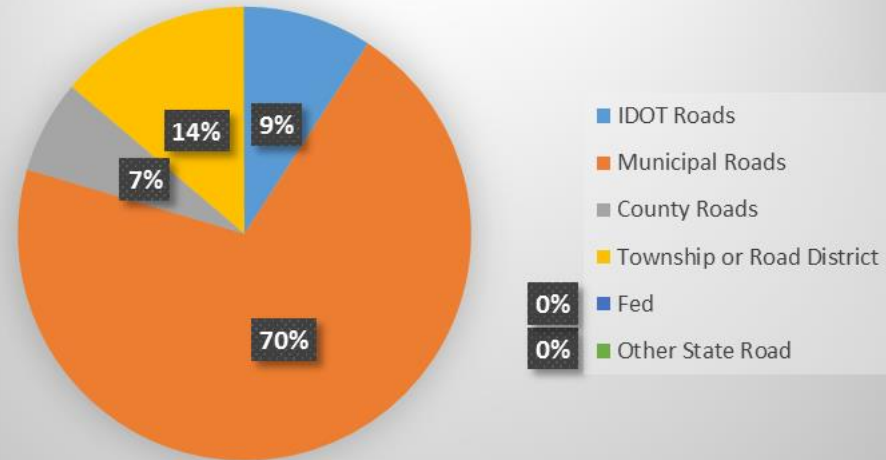
2014 Strava data



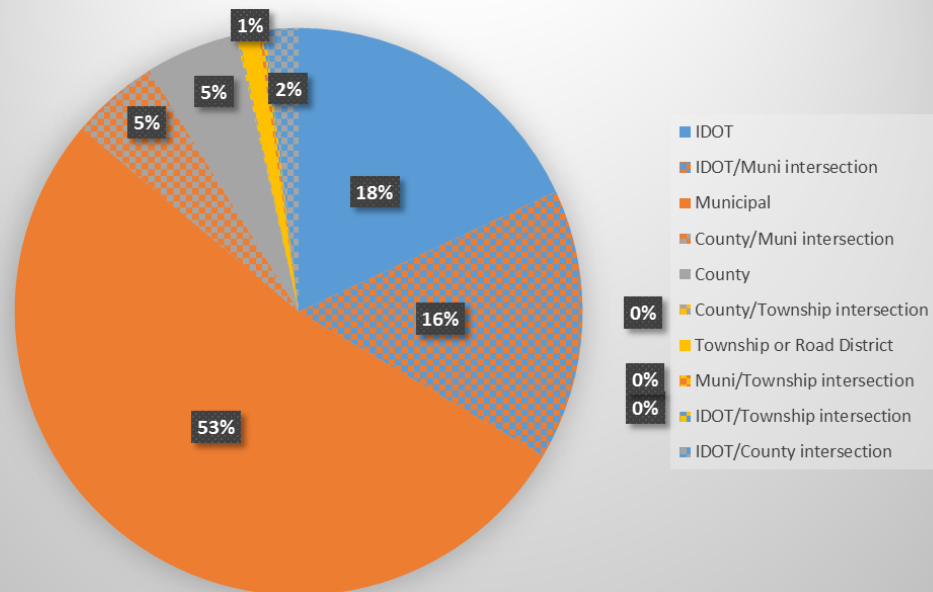
2015 Strava data



## Regional Roadway Jurisdiction (miles)



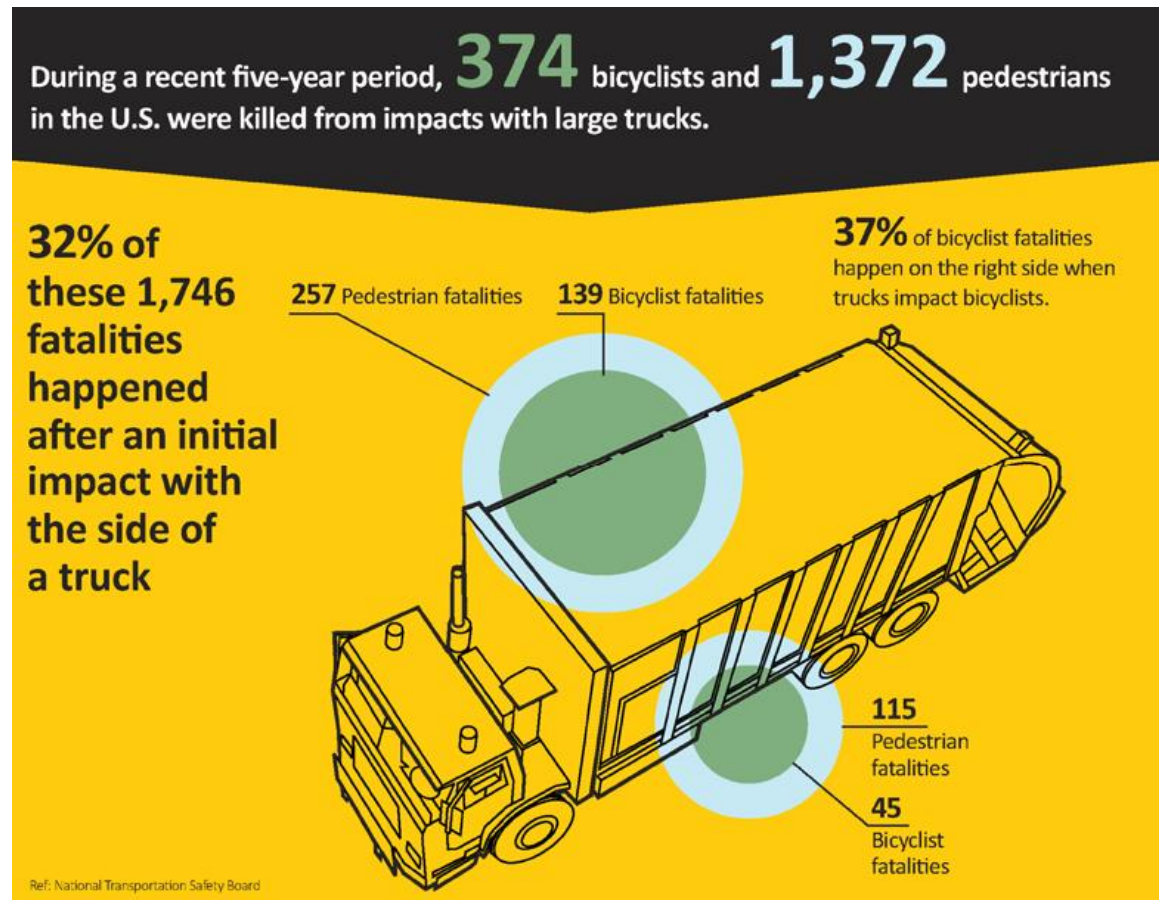
## Fatal & Serious Bike and Ped Crashes (by jurisdiction)



# Key Research Questions

## Crashes & safety

- How have conditions and safety for non-motorized transportation changed?



# Key Research Questions

## Economic development tool

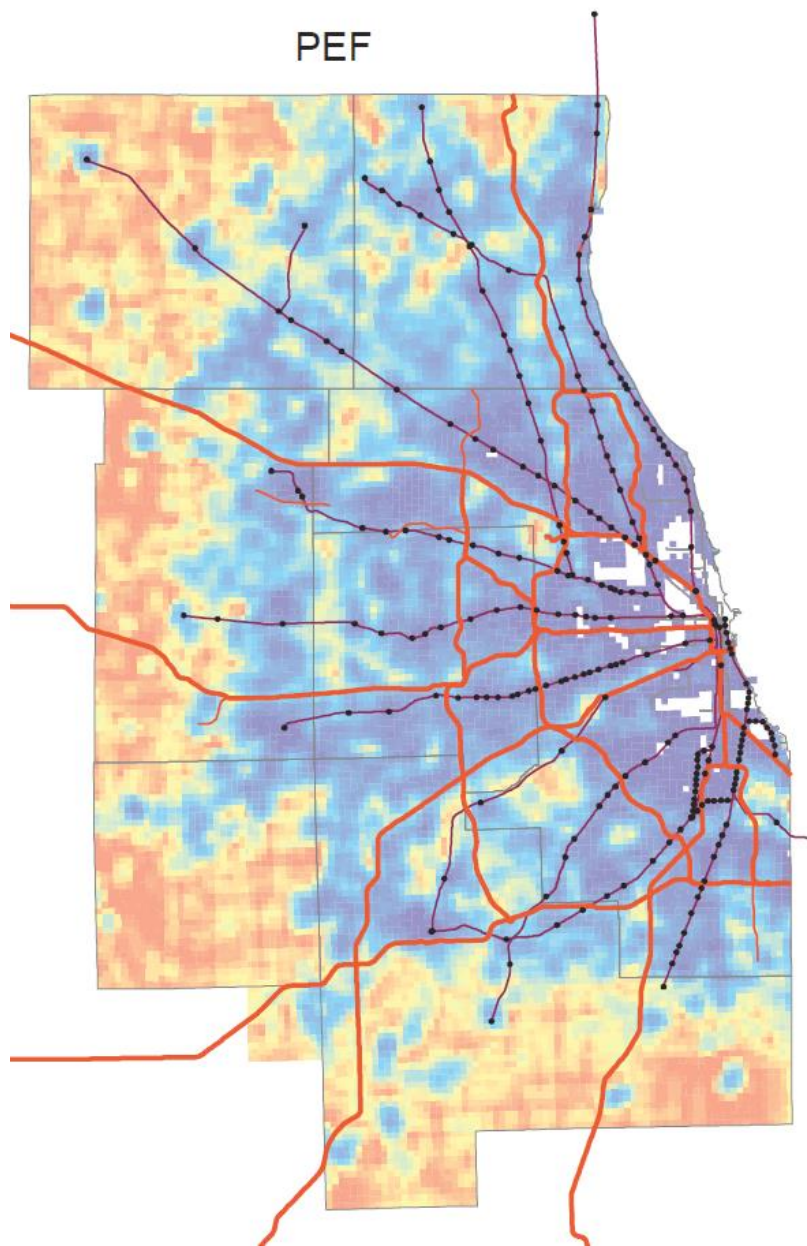
- Are any local communities using non-motorized transportation to support transit usage or economic development goals?

# Phase 2 Research Questions

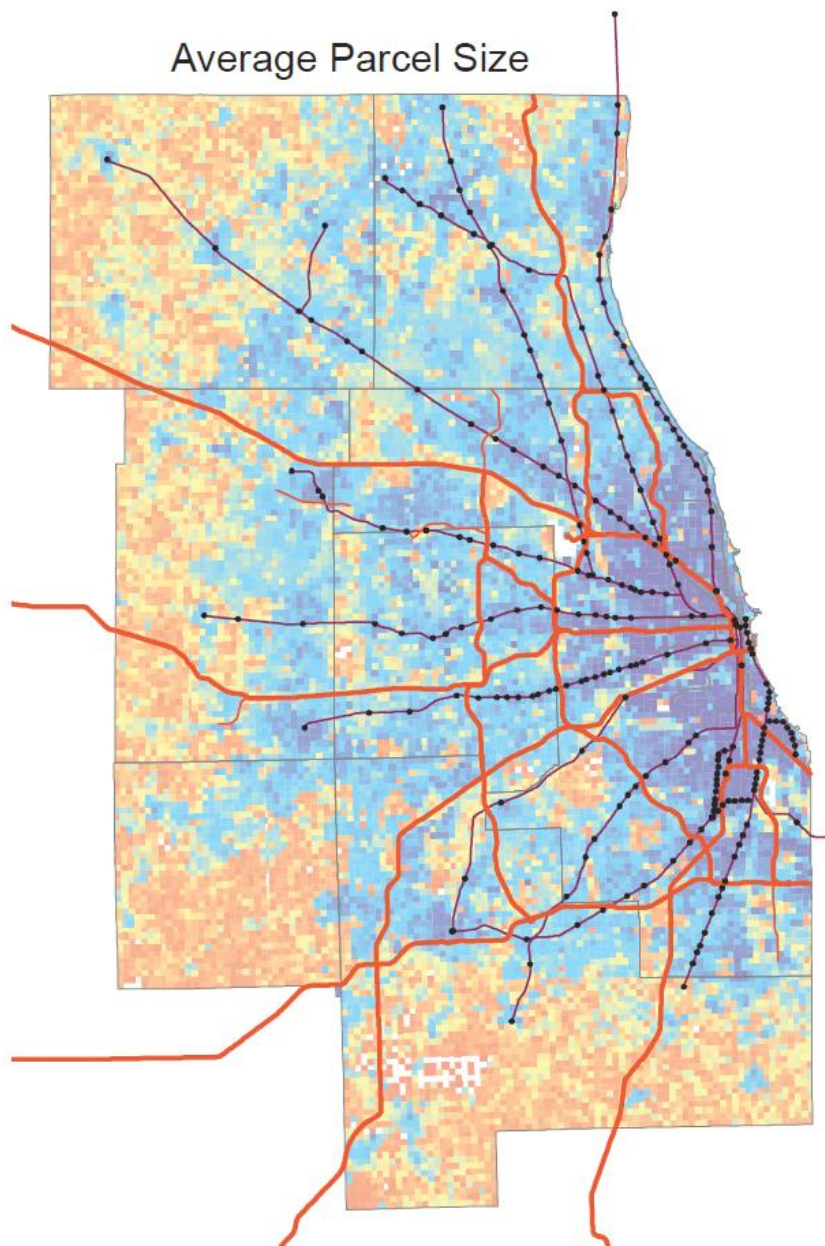
- Where have Complete Streets initiatives been implemented? What success have they had? How do you measure success?
- What are the important elements of walkability?
- How has bike share impacted cycling in Chicago and the region and what are implications for other communities?
- What are the biggest challenges to roadway safety for pedestrians and bicyclists, and what solutions have been most effective (engineering, education, enforcement, etc )?
- What are the lessons learned regarding safety initiatives and infrastructural changes to support better walking and biking? Will automated safety features address concerns or raise new ones?

# Parcel Size and PEF

PEF



Average Parcel Size



# Data sources & challenges

- IDOT crash data
- CMAP's inventory of facilities
- Divvy data
  - Only for Chicago
- Census data
  - MOE too great to be reliable
- Census Transportation Planning Package (CTPP)
  - MOE too great to be reliable
- Strava Labs data
  - Have Cook County, not regional
  - Specific user type, doesn't capture all riders



# Outreach & Engagement

- CMAP Transportation Committee
- Bicycle and Pedestrian Task Force
- IDOT, Ride Illinois, Chicagoland Complete Streets Coalition
- Additional local groups

# Questions

Lindsay Bayley

(312) 386-8826

[lbayley@cmap.illinois.gov](mailto:lbayley@cmap.illinois.gov)

