

Lands in Transition

Draft Strategy Paper
May 4, 2017

Agenda

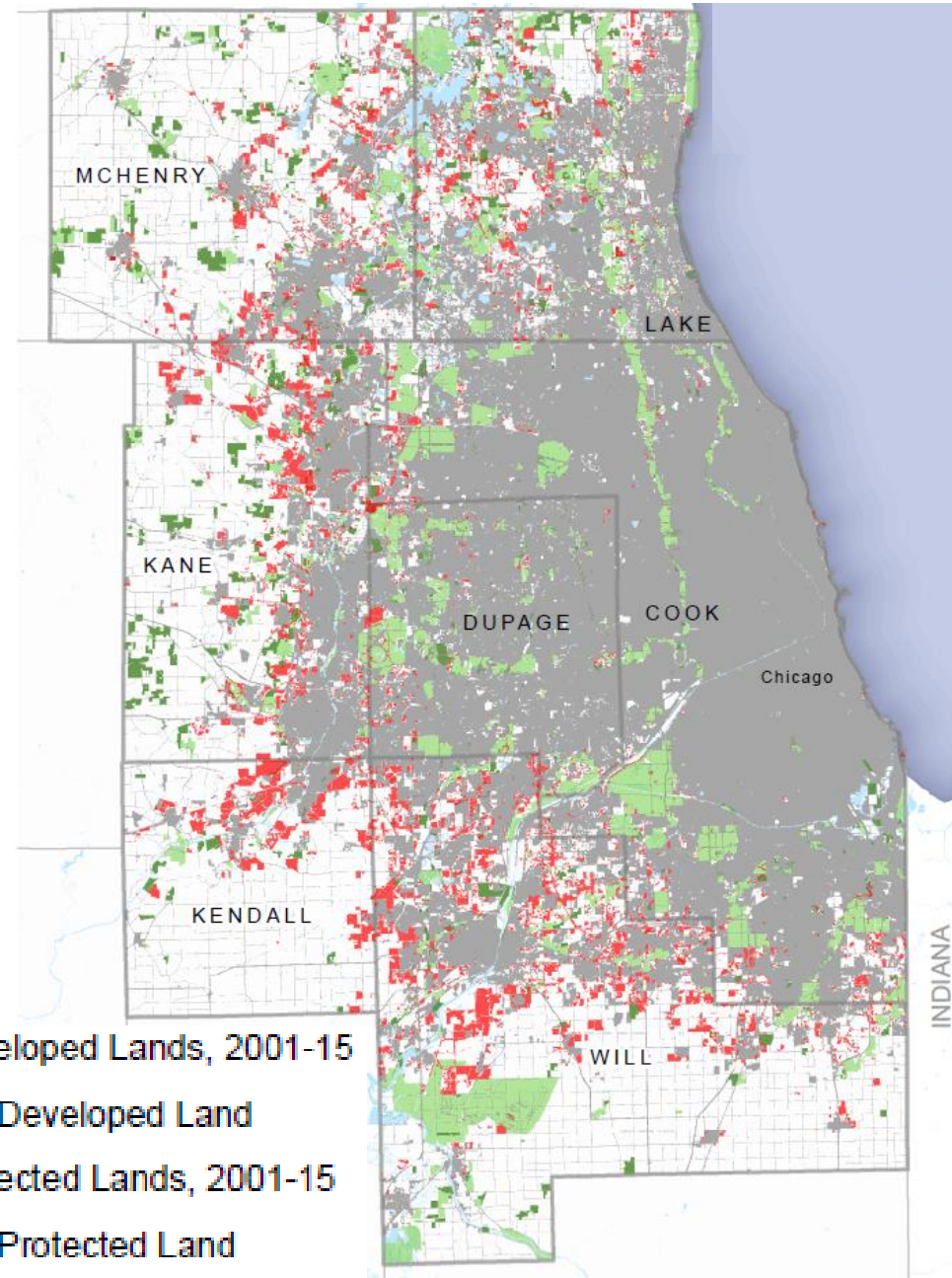
- Purpose
- Land development and protection trends
- Draft strategies
- Next Steps



Newly developed and newly protected lands in the Chicago region, 2001-2015.

Land development, 2001 - 2015

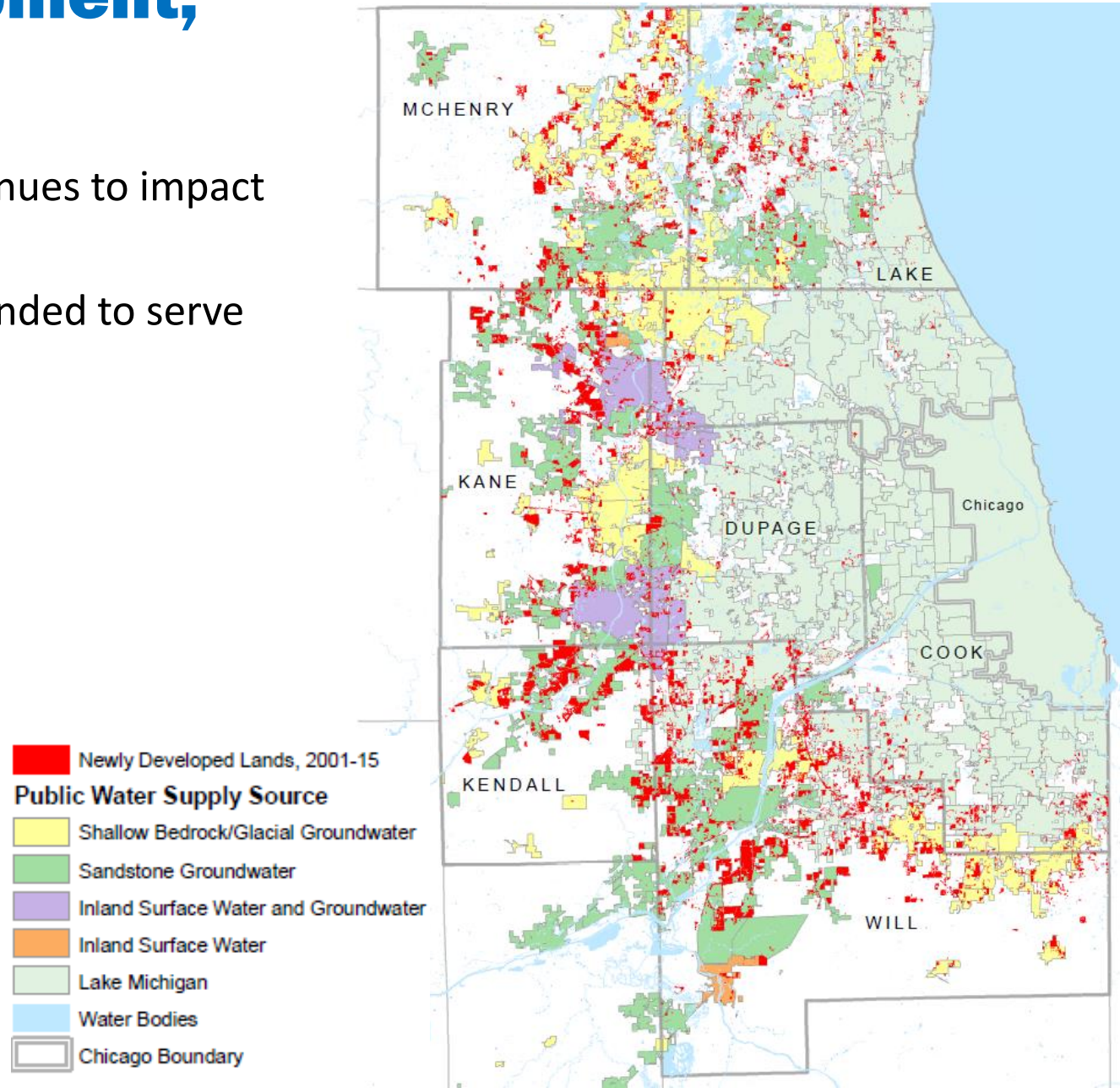
- Most development occurred on agricultural lands
- Most development occurred in newly annexed areas
- Significant share of development is residential



Land development, 2001 - 2015

- Development continues to impact natural resources
- Infrastructure expanded to serve new areas

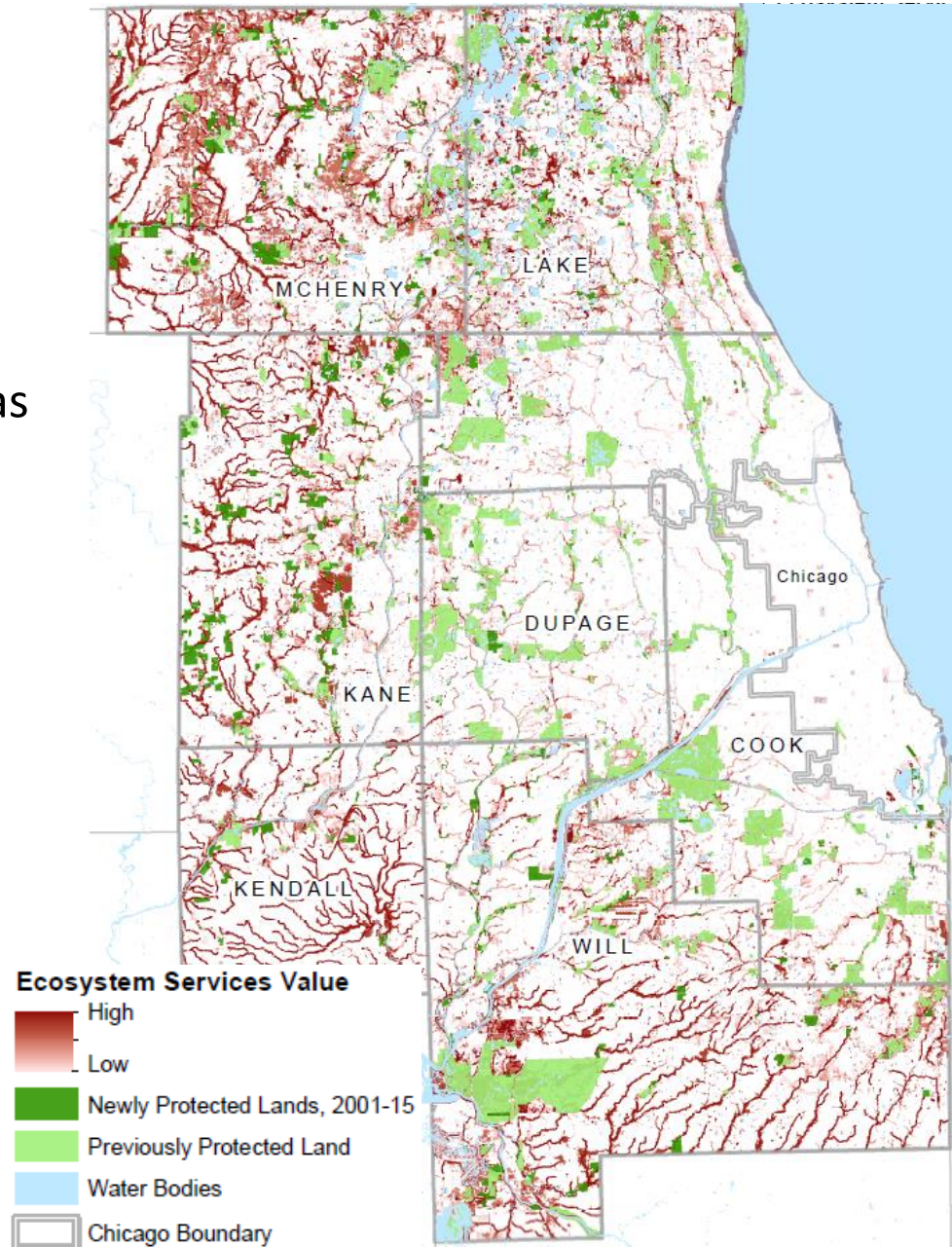
Newly developed lands and drinking water source by municipality.



Land protection, 2001 - 2015

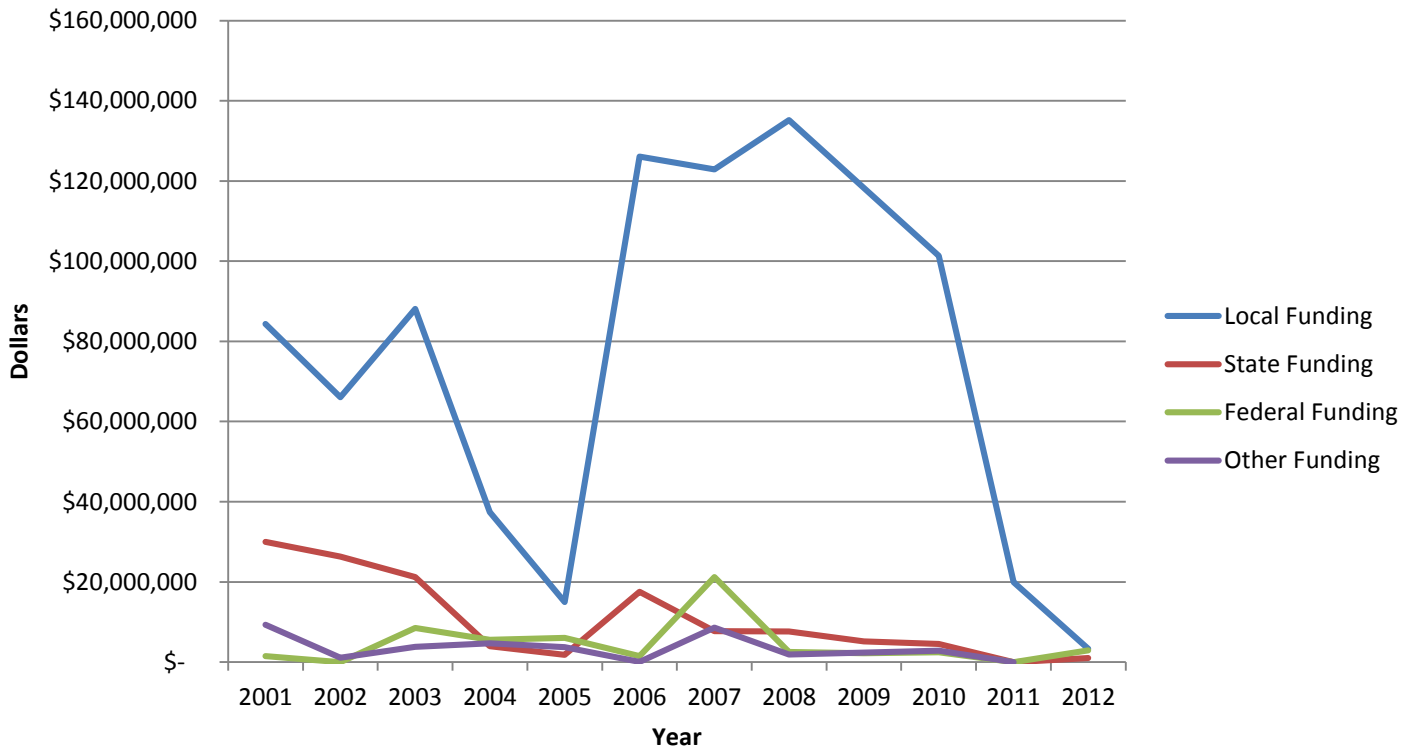
- Concentrating land protection within the GIV
- Increasing land protection for areas with agricultural land cover
- Counties protect the most land
- Growing role of conservation easements
- Increasing pressures from climate change

Protected lands and the GIV



Land protection, 2001 - 2015

- Significant conservation spending
- Local funding has been critical to success
- Declining funds for land protection



Overview of structure

1. Introduction
2. Land development and protection trends
3. Strategies for lands in transition
 1. Strengthen natural land protection and stewardship
 2. Strengthen regional agricultural systems
 3. Prioritize resource considerations in development decisions



Overview of strategies

1. Strengthen natural land protection and stewardship
 - 1.1 Refine key natural areas mapping with best available data
 - 1.2 Prioritize land protection within the conservation areas layer
 - 1.3 Establish sustainable state funding sources for land preservation and stewardship
 - 1.4 Expand financing strategies to protect critical lands
 - 1.5 Increase private landowner conservation and stewardship



Overview of strategies

2. Strengthen regional agricultural systems
 - 2.1 Recognize farmland and agriculture as economically valuable
 - 2.2 Identify key agricultural lands
 - 2.3 Encourage climate resilient agriculture systems
 - 2.4 Support diversification of agricultural systems
 - 2.5 Support state and county farmland preservation programs



Overview of strategies

3. Prioritize resource considerations in development decisions

3.1 Identify agricultural and natural assets in land use and transportation planning

3.2 Update ordinances to better protect agricultural and natural resources

3.3 Identify areas with higher development pressure

3.4 Encourage compact and conservation-oriented development

3.5 Incorporate long-term infrastructure maintenance costs into expansion decisions



Next steps

1. CMAP final review
2. Release of the Strategy Paper



ON TO 2050

Nora June Beck
nbeck@cmap.illinois.gov
312-386-8677