

ON TO 2050

**ON TO 2050 Progress Report:  
LAYERS APPROACH**

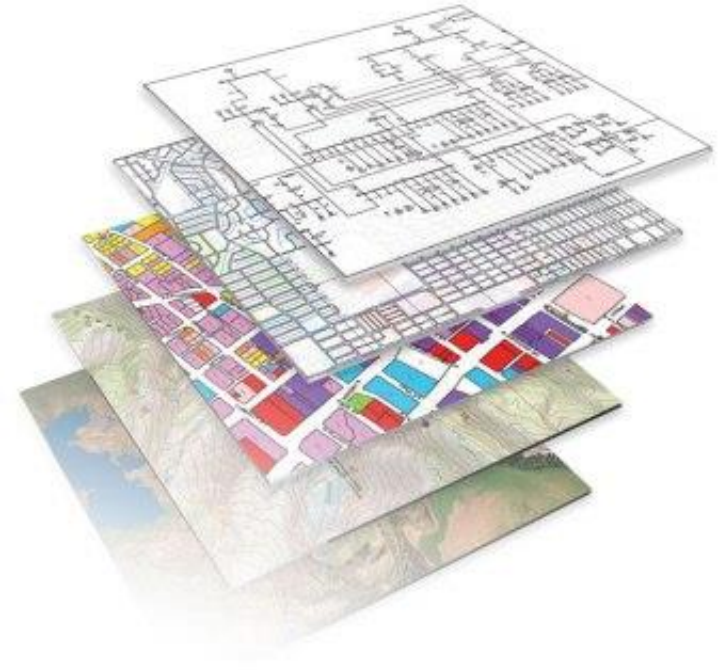
**February 1, 2018**

# Layers Concept

**Goal:** Develop maps and recommendations to help municipalities understand ON TO 2050 policies in their local context

## Methods

- GIS-based data layers for approximately 20 topic areas to be released on Data Hub
- Tie-in with Community Data Snapshots
- Interactive maps in ON TO 2050
- Potential to follow up with more detail after plan adoption

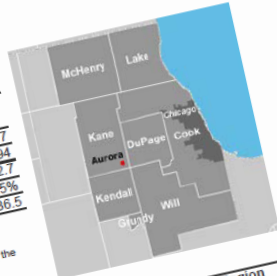


# Community Data Snapshots

## MetroPulse Community Data Snapshot | Aurora

### GENERAL POPULATION CHARACTERISTICS, 2015

	Community	Kane County**	CMAP Region
Total Population	200,614	524,886	8,505,977
Total Households	61,449	172,479	3,067,594
Average Household Size	3.2	3.0	2.7
Population Change, 2000-10	38.4%	27.5%	3.5%
Median Age*	31.7	35.9	36.5



### RACE AND ETHNICITY, 2015

	Community	Percent	Kane County	Percent	CMAP Region	Percent
White	77,409	42.2	305,352	58.2	4,437,089	52.2
Hispanic or Latino*	84,632	9.6	163,756	31.2	1,902,685	22.4
Black	19,234	7.4	27,873	5.3	1,443,074	17.0
Asian	14,833	2.2	19,321	3.7	564,622	6.6
Other	4,506	2.2	8,784	1.7	158,507	1.9

Source: 2015 American Community Survey, five-year estimates. \*Note that all Regional Medians were calculated based on Grouped Frequency Distributions. \*\*For municipalities located in more than one county, data provided is for the county containing the largest portion of the municipality. \*Includes Hispanic or Latino residents of any race

### AGE COHORTS, 2015

	Community	Percent	Kane County	Percent	CMAP Region	Percent
19 and under	66,503	33.1	158,271	30.2	2,271,714	26.2
20 to 34	43,991	21.9	97,675	18.6	1,810,122	21.4
35 to 49	45,974	22.9	112,464	21.4	1,757,378	18.6
50 to 64	29,438	14.7	97,541	18.6	1,623,947	18.6
65 to 79	11,599	5.8	45,139	8.6	763,737	8.6
80 and Older	3,111	1.6	13,796	2.6	273,737	2.6

Source: 2015 American Community Survey five-year estimates. Universe: Total population.

### HOUSEHOLD INCOME, 2015

	Community	Percent	Kane County	Percent
Less than \$25,000	9,794	15.9	25,403	15.9
\$25,000 to \$49,999	13,580	22.1	34,275	22.1
\$50,000 to \$74,999	12,278	20.0	31,175	20.0
\$75,000 to \$99,999	8,185	13.3	24,082	13.3
\$100,000 to \$149,999	9,785	15.9	31,427	15.9
\$150,000 and Over	7,827	12.7	25,403	12.7
Median Income	\$63,090		\$63,090	

Source: 2015 American Community Survey five-year estimates. Universe: Total household population.

### EDUCATIONAL ATTAINMENT, 2015

	Community	Percent	Kane County	Percent
High School Diploma or Higher	91,555	76.2	76.2	76.2
Bachelor's Degree or Higher	37,350	31.1	31.1	31.1

Source: 2015 American Community Survey five-year estimates. Universe: Population 25 and over.

### ON TO 2050 Plan Recommendations - Top Areas of Importance

#### Community Data Snapshot: Aurora - Page Five

##### Walkability

Scores range from 0 - 62, downtown areas can improve walkability to achieve higher scores by ensuring that a complete network of sidewalks connect destinations.

Further reading  
Non-motorized transportation report

##### Infill opportunities areas

Aurora falls entirely within infill supportive areas. Development within the highly supportive areas is recommended to accomplish regional goals.

Further reading  
Reinvestment and Infill strategy paper  
Lands in Transition strategy paper

##### Transit needs

Aurora has employment areas with poor transit access and high transit areas with limited employment. Improvements to connect jobs and transit will help the municipality reduce

Further reading  
Transit Modernization strategy paper

##### Climate vulnerability

Aurora has a higher than average concentration of populations vulnerable to the impacts of a changing climate.

Further reading  
ClimateResilience strategy paper

# Layers

## Land Use

- Housing market areas
- Infill supportiveness
- Locally identified mixed-use areas
- Disinvested areas
- Coordinated growth areas

## Regional Economy/Governance

- Economically disconnected areas
- Employment centers (traded clusters)
- Municipal tax capacity

## Transportation

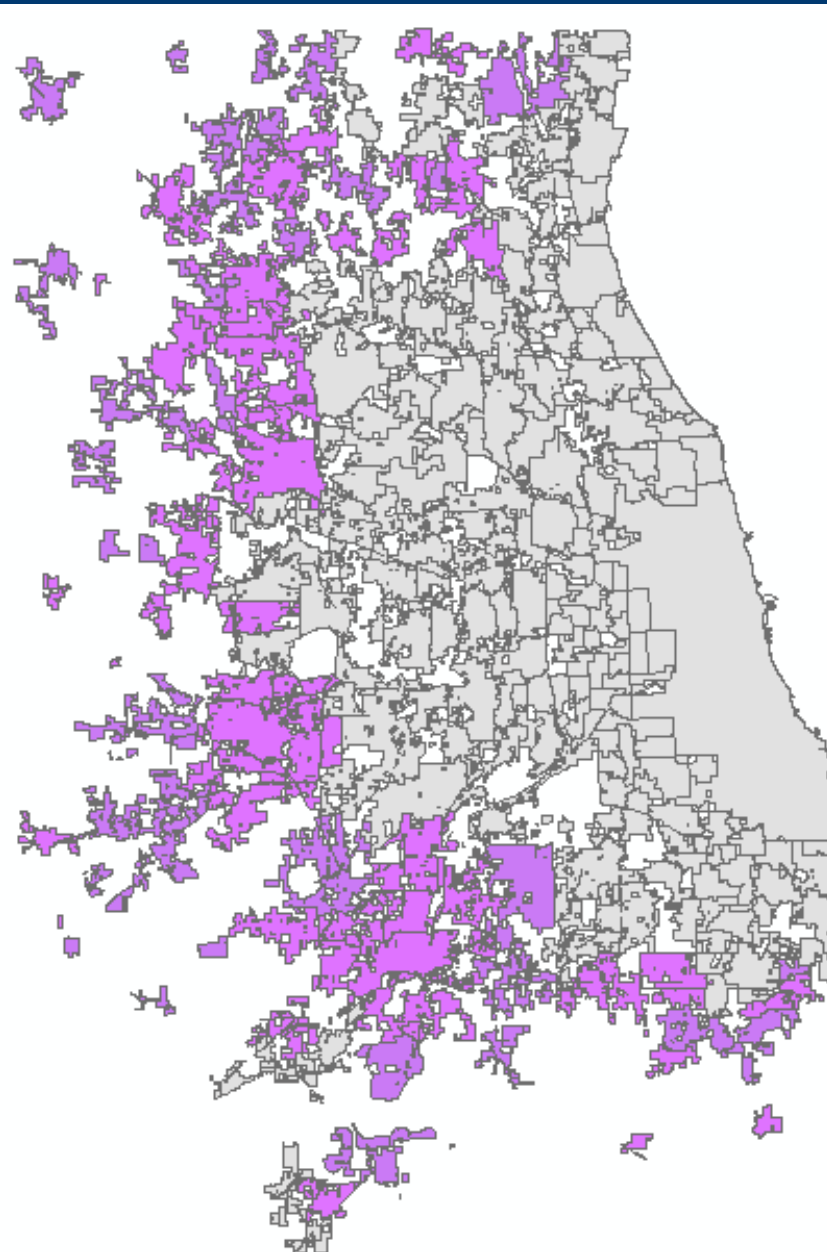
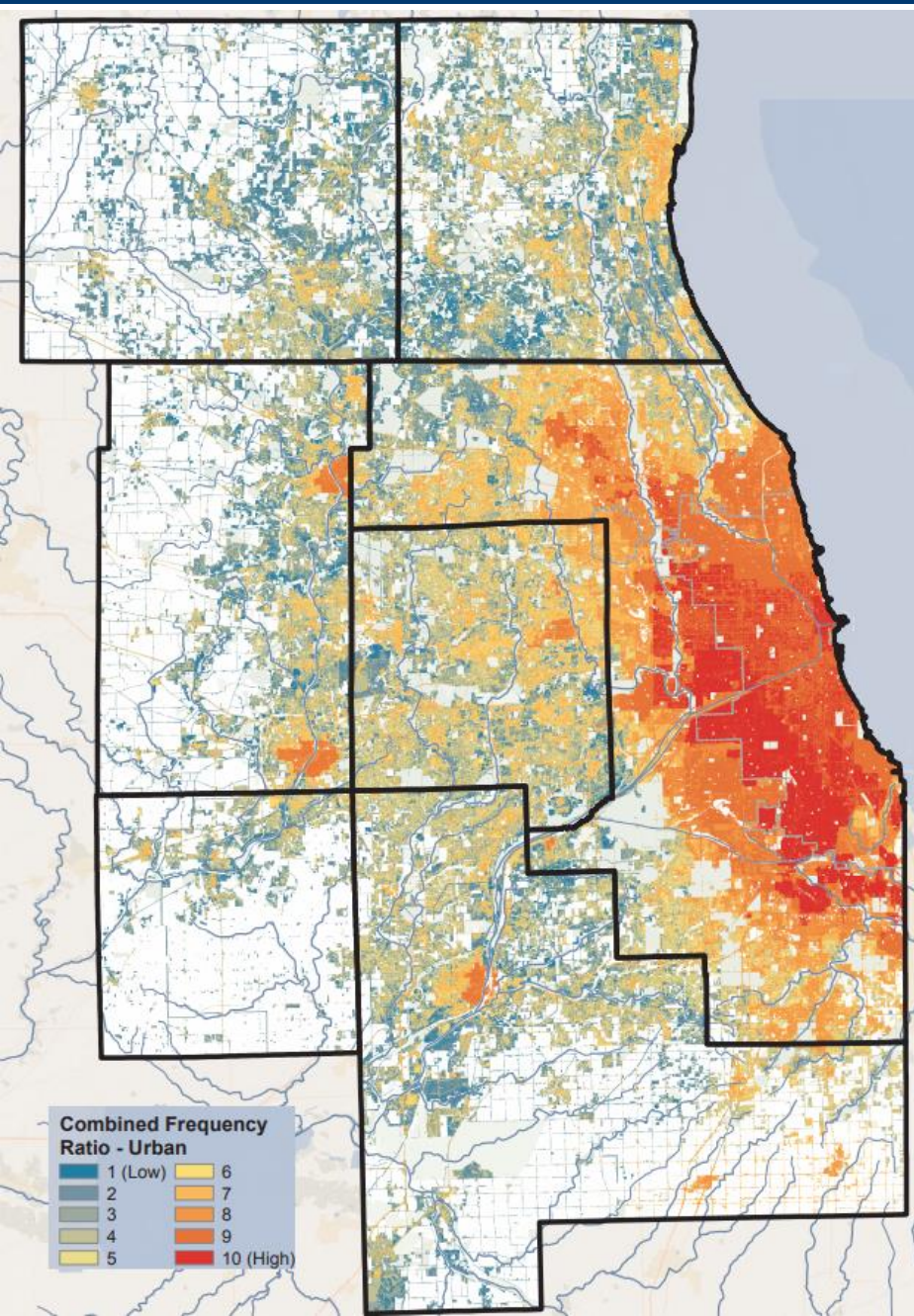
- Regional trails
- Walkability
- National highway freight network
- Freight planning areas
- Transit needs & opportunities
- Regionally significant projects
- Highway/roadway needs & opportunities

## Environment

- Flooding susceptibility index
- Watershed integrity/water quality
- Water source protection
- Access to parks
- Conservation areas

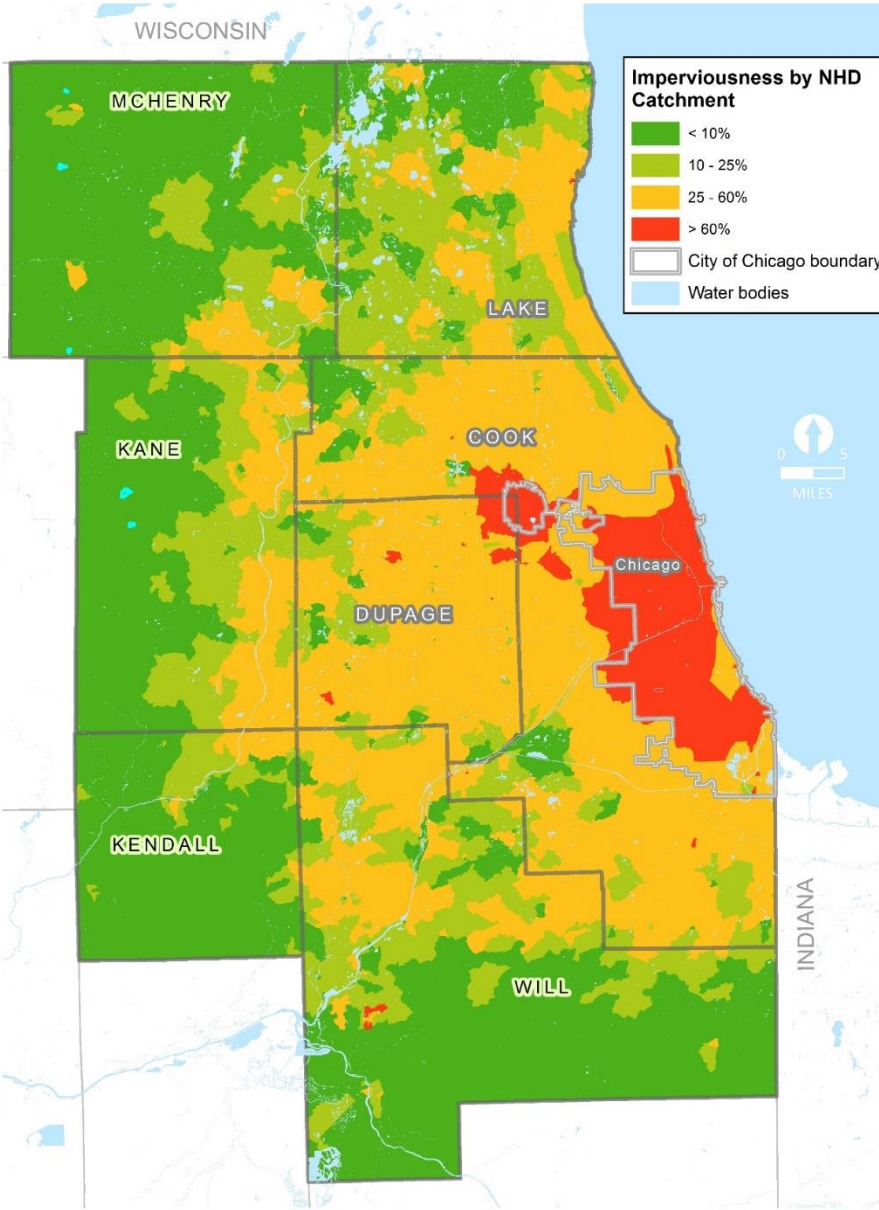
# Flooding susceptibility index

# Coordinated growth areas

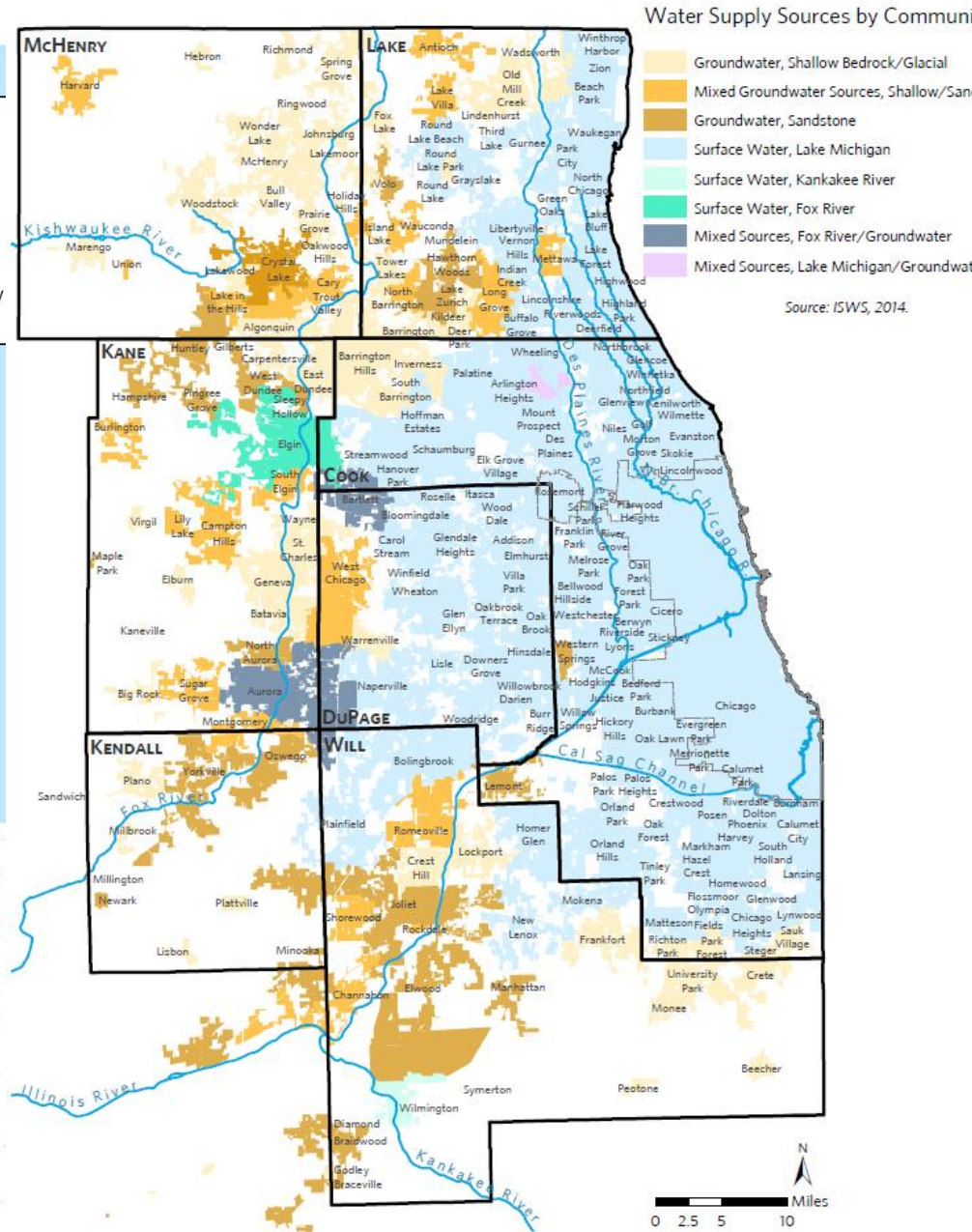


# Watershed integrity

# Water source protection

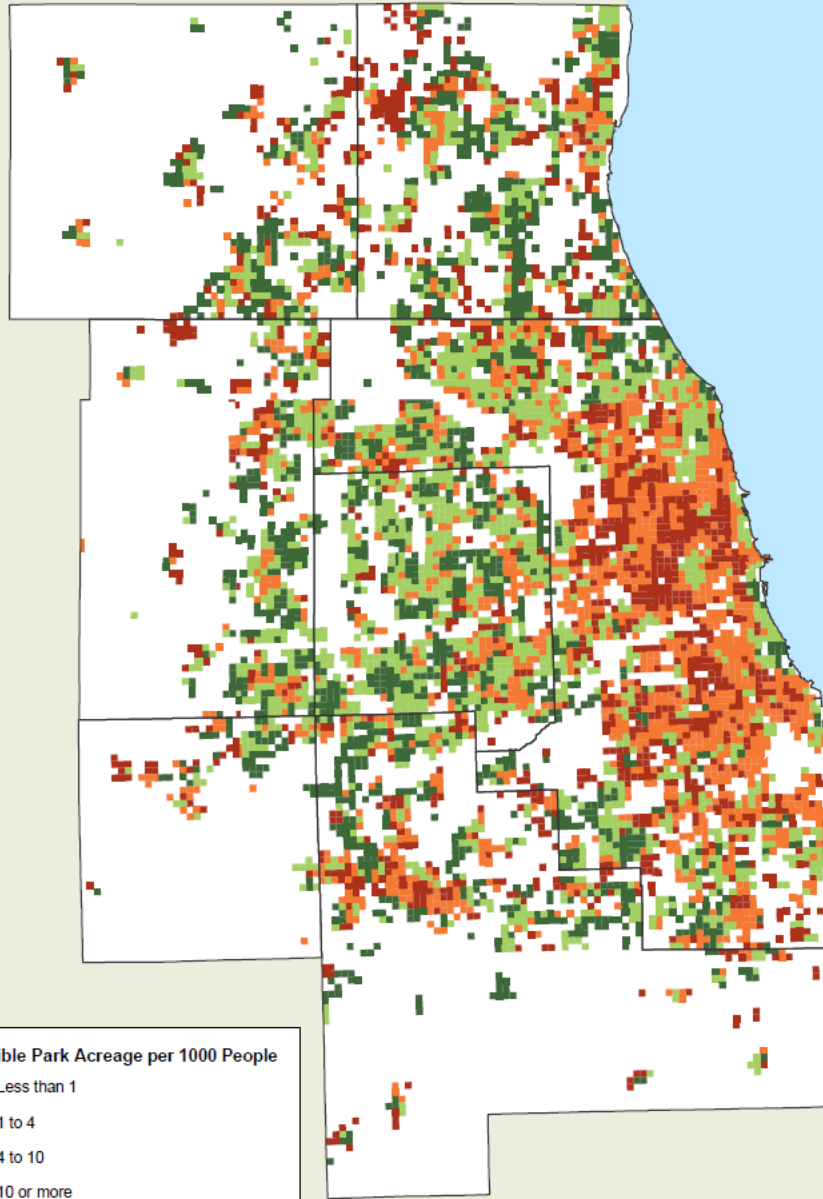


Source: CMAP analysis of National Hydrography Dataset.

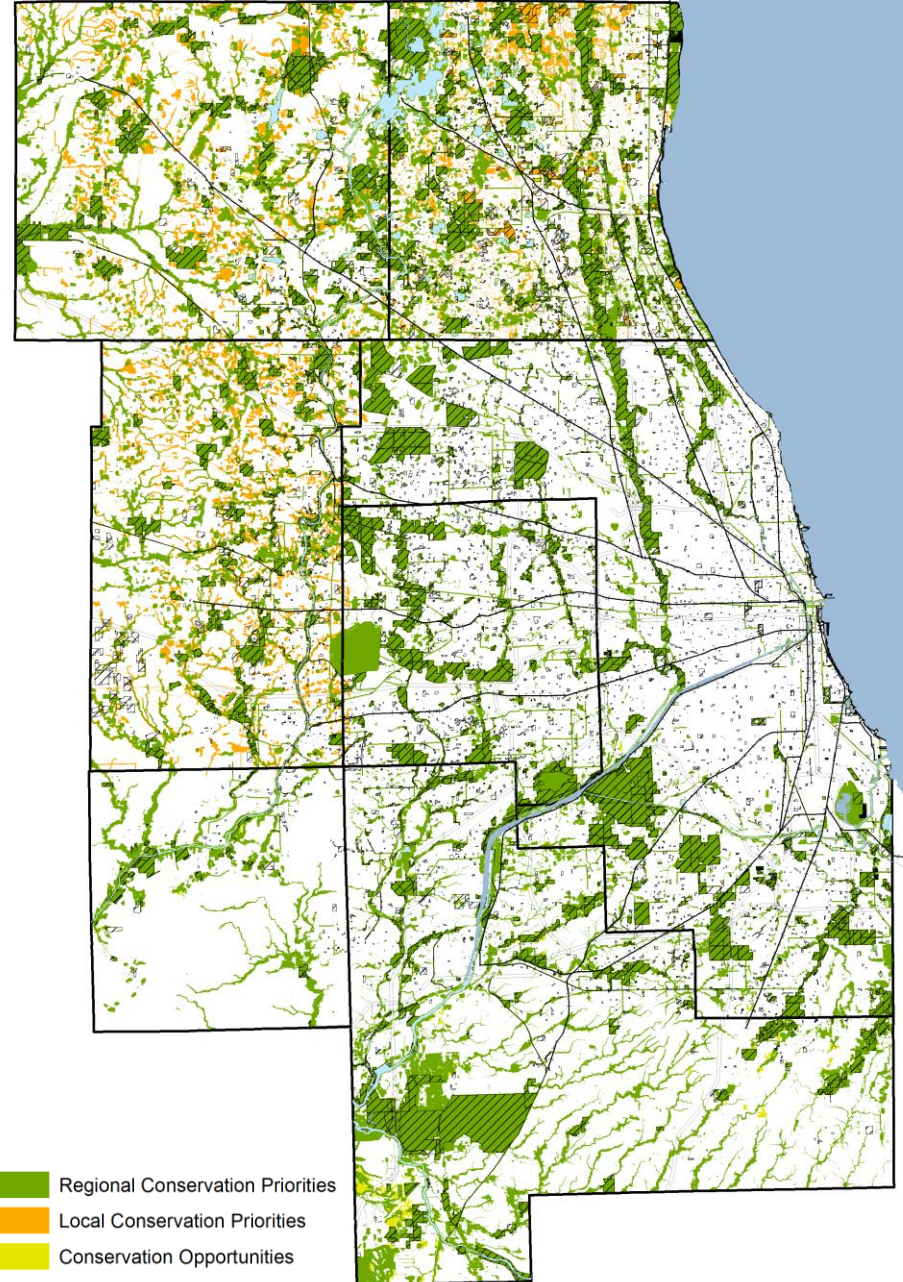


Chicago Metropolitan Agency for Planning, 2017.

# Access to parks



# Conservation areas



# Next Steps

- Finalize layers for inclusion in plan, and figure out best method for digital presentation
- Determine how to include layer info in Community Data Snapshots, and develop more specific recommendations (post-plan)



ON TO 2050

**Comments or questions?**