

ON TO 2050

Health Equity Strategy Paper

February 1, 2018

Goal: articulate how a health equity lens will be incorporated into strategies across ON TO 2050 topic areas.

- **GO TO 2040** recommended public policies for land use, transportation, and housing with an emphasis on development patterns that support walkable communities, transit, and access to jobs and amenities.

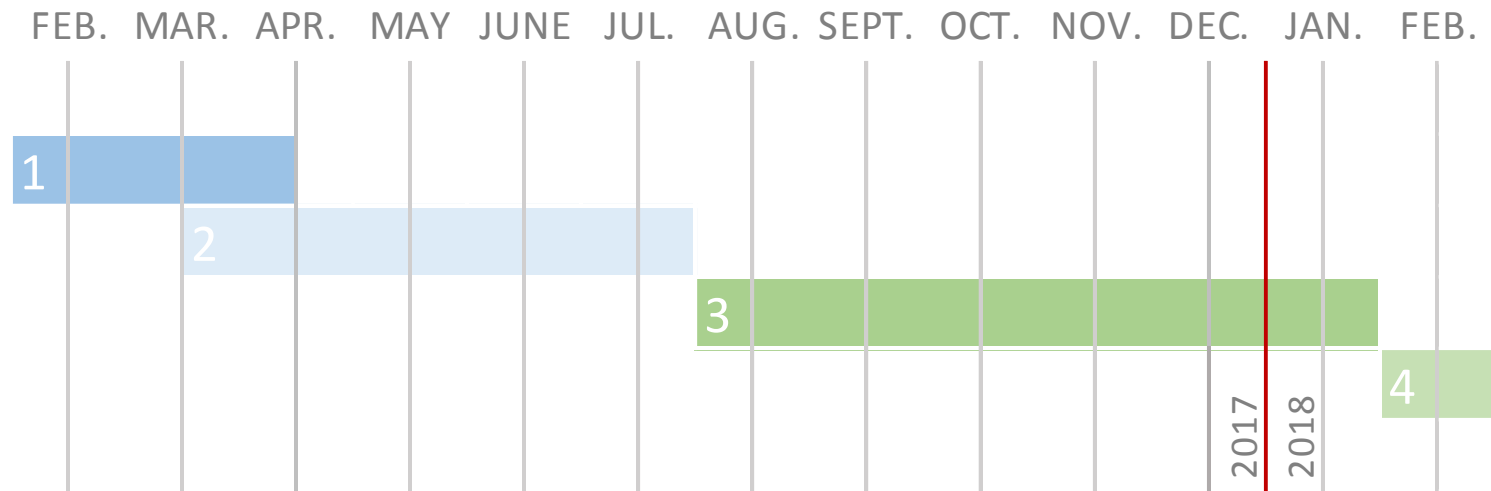
Resource Group Members:

<ul style="list-style-type: none"> • Heather Schady – Active Transportation Alliance 	<ul style="list-style-type: none"> • Raj Shah – Family Medicine and Rush Alzheimer's Disease Center
<ul style="list-style-type: none"> • Daniel Cooper – Adler University Institute on Social Inclusion * 	<ul style="list-style-type: none"> • Tenisha Jones – Greater Auburn Gresham Development Corp
<ul style="list-style-type: none"> • Rob Mapes – AgeOptions 	<ul style="list-style-type: none"> • Wesley Epplin – Health & Medicine Policy Research Group *
<ul style="list-style-type: none"> • Carol Caref – Chicago Teachers Union 	<ul style="list-style-type: none"> • Jess Lynch – Illinois Public Health Institute
<ul style="list-style-type: none"> • Sarah Hains – Chicago Teachers Union 	<ul style="list-style-type: none"> • Jackie Forbes – Kane County Division of Transportation
<ul style="list-style-type: none"> • Tiffany McDowell – Chicagoland Equity Network * 	<ul style="list-style-type: none"> • Laura Schneider – Lake County Health Department & Community Health Center
<ul style="list-style-type: none"> • Ann Cibulskis – City of Chicago Department of Public Health 	<ul style="list-style-type: none"> • Chloe Gurin Sands – Metropolitan Planning Council
<ul style="list-style-type: none"> • Anne Posner – City of Chicago Department of Public Health 	<ul style="list-style-type: none"> • Will Snyder – Presence Health
<ul style="list-style-type: none"> • Adam Becker – Consortium to Lower Obesity in Chicago Children 	<ul style="list-style-type: none"> • Felipe Tendick-Matesanz – Restaurant Opportunities Center United
<ul style="list-style-type: none"> • Lilian Jimenez – Cook County Commissioner Jesus "Chuy" Garcia 	<ul style="list-style-type: none"> • Patrick Lenihan – School of Public Health, University of Illinois Chicago
<ul style="list-style-type: none"> • James Bloyd – Cook County Department of Public Health 	<ul style="list-style-type: none"> • Richard H. Sewell – School of Public Health, University of Illinois Chicago
<ul style="list-style-type: none"> • Deanna Durica – Cook County Department of Public Health 	<ul style="list-style-type: none"> • Alma Rodriguez – The Chicago Community Trust
<ul style="list-style-type: none"> • Carmen Vergara – Esperanze Health Centers 	

* Denotes consultant team.

Planning Process

Project Timeline



1. Understand the public health landscape & identify MPO role

2. Assess future needs

3. Strategy paper development & review

4. Build capacity in health equity

■ Outreach activities:

- ON TO 2050 public engagement process
- Held 6 resource group meetings
- CMAP working committee presentations
- Hosted 2 listening meetings
- APA-IL Chapter Planning4Health Roundtable on July 27
- September 19 joint meeting of the Housing and HCD Committees
- November 17 discussion with City and County Departments of Health, Planning, and Transportation

Key Findings

■ **Public & stakeholder engagement**

- Stakeholders most commonly identified the marginalization of certain groups as the key health equity barrier.

■ **Review of partner plans**

- Overall, community health improvement plans have a strong programmatic approach focused on changing individual behavior.

■ **Scan of ON TO 2050 strategy papers**

- Many of the strategy papers included recommendations relevant to public health, see page 14 for summary.

■ **Peer MPO assessment**

- Majority of CMAP's peer agencies detail active transportation, access to open spaces and parks, environmental pollutants, and health education as opportunity areas to promote community health.
- Agencies with advanced capacity for public health initiatives integrate public health into plans and policy recommendations.

All residents in the Chicago Metropolitan Region will reside in livable communities with **equitable access to the resources and opportunities** necessary for optimal health and well-being.

- **5 sections, 17 proposed strategies**
 - The first section describes **existing barriers to health equity**.
 - The second section provides an **assessment of the public health landscape**.
 - Section three presents an **overview of existing agency work on public health**, including strategies already developed for the ON TO 2050 plan.
 - Sections one through three informed the **strategy recommendations** for the agency and its partners to consider, in section four.
 - The final section details **next steps** for how CMAP will continue to advance health equity in the region.

Overarching strategies

- **Standardize best practices that promote health equity**

Developing standardized equitable practices and processes with a focus on advancing health and health equity will help ensure that public projects and planning promote health equity.

- *Continue to foster inclusive public outreach processes.*
- *Support health impact assessments for substantial transportation and development projects.*
- *Develop and implement displacement prevention strategies.*

Overarching strategies

- **Improve data collection, analysis, and availability for evidence-based policy and decision-making**

When properly collected and analyzed, quality health data and metrics can help reduce health inequities.

- *Expand evaluation metrics to highlight benefits to economically disconnected areas.*
- *Expand options for expanding and coordinating primary health data collection.*
- *CMAP and partners should develop an index of health and SDOHI indicators that is common across the region and can be broken down by race/ethnicity, class, gender, and disability.*
- *Monitor integration of health and health equity in municipal policies.*

Key strategy areas

- **Pursue environmental justice and climate resilience for vulnerable populations**

Building resiliency into public policy, planning, and infrastructure will help communities withstand and recover from many overlapping challenges posed by climate change and other related environmental issues.

- *Prioritize investment to limit the negative air quality, noise, congestion, pollution, and other impacts of major transportation facilities.*
- *Build resilience for climate change, particularly in under-resourced communities.*

Key strategy areas

■ Integrate healthy community design approaches to support the health of residents

Community design and planning to create a livable built environment can have significant impacts on public health.

- *Continue to promote active transportation in local planning to create walkable communities.*
- *Expand housing choice to improve housing affordability.*
- *Develop effective municipal rental regulations programs.*
- *Update development regulations to guide healthy land use planning and environmental design.*
- *Develop a quality of open space standard with particular attention to EDAs.*

Key strategy areas

■ Invest in vulnerable communities

In the Inclusive Growth strategy paper, CMAP analysis shows that high levels of economic inequity are limiting our region's ability to grow.

- *Expand high-quality transportation options in excluded communities.*
- *CMAP should investigate various funding concepts in an effort to improve mobility for all communities.*
- *Reinvest in disinvested areas.*

■ Preliminary ideas for next steps:

- Highlight health equity as part of ON TO 2050's Inclusive Growth campaign.
- Convene City and County health departments, major hospital systems, and other relevant partners to explore options for expanding and coordinating primary health data collection.
- Build internal staff capacity to incorporate health equity into local planning, data, and research work.
- Explore HIAs for transportation projects (could be part of RSPs – post plan adoption).

Thank you!

Ricardo Lopez

(312) 386-8766

rlopez@cmap.illinois.gov

