

# Highway Traffic Signal Inventory

---

Regional Transportation Operations Coalition | 3/22/2018

# History

- RTOC suggested an update of the CMAP signal inventory in 2013.
- The HTSI was initiated in 2015; the bulk of the development work occurred in 2016-2017.
- RTOC was updated and provided feedback in March, 2015; July, 2015; November, 2016; and September, 2017.
- V1 of the HTSI was released publicly in February, 2018.
- Regular updates are expected biennially.

# What is the Highway Traffic Signal Inventory?

- The Highway Traffic Signal Inventory (HTSI) is an inventory of signals at intersections on public roads in 7-county northeastern Illinois region.
- The HTSI is based on partner agencies' inventories.
- The HTSI is in ArcGIS file geodatabase format.
- Signal locations are tied to IDOT's roadway inventory. The signals are located on centerlines, rather than the locations of controller boxes.

## Who Participates in the Inventory?

- Eventually, all signal owners will be inventoried.
- For Version 1, CMAP solicited data from large transportation agencies: IDOT, CDOT, and the counties.
- CMAP is soliciting information from municipalities for Version 2 of the database. Municipal responses are due April 20.

# What Is in the Signal Inventory?

- The HTSI includes the location, ownership/maintenance assignments, and operational features of inventoried signals.
- Operational features include such features as controller information, railroad preemption, interconnect systems, red-light camera enforcement, and pedestrian signals, among many others.
- However, the inventoried features depend on agencies maintaining this information. This is now the exception, but the expectation is that this will change over time.

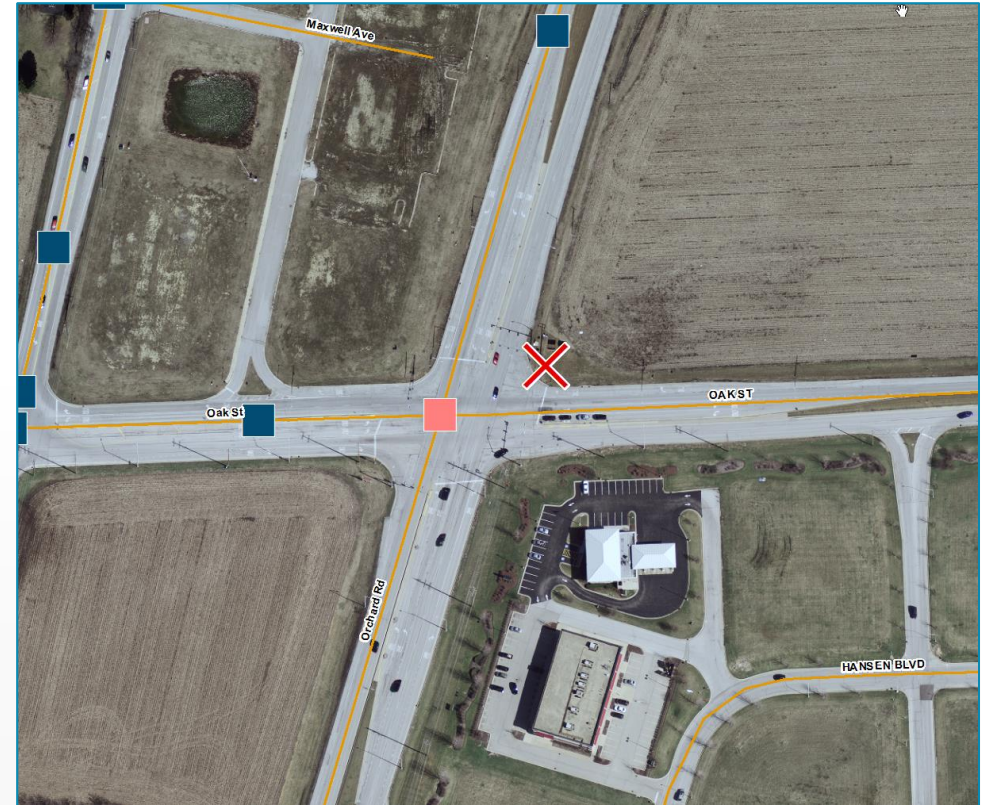
# Data Processing

- Preprocessing

	A	B	C	D	E	F
1	Field Description	X-Coordinate (Longitude)	Y-Coordinate (Latitude)	County	Municipality	Major Street
2	Domain (Please Limit Response to Those in the "Domains" Tab)					
3	CMAP Field Name	XCOORD	YCOORD	COUNTY	MUNICIPALITY	MAJOR
4						
5						
6						
7						
8						
9						
10						
11						

# Data Processing

- Preprocessing
- Loading signal data
  1. Locate signals (multiple)
  2. Locate signals (single)
  3. Add new intersection
  4. Map domain values
  5. Load to HTSI



2. Map Domain Values

Click error and warning icons for more information

Matched signals

Signals

HTSI geodatabase

S:\AdminGroups\ResearchAnalysis\ADB\\_GIS\HTSI\test\_data\HTSI\_GDB.gdb

HTSI ATTS

S:\AdminGroups\ResearchAnalysis\ADB\\_GIS\HTSI\test\_data\HTSI\_GDB.gdb\HTSI\_ATTS

Domain map (optional)

Field	Invalid field value	Acceptable coded values	All coded values
ACCPEDSIG	Bad	Yes   No	
ACCPEDSIG	Good	Yes   No	
COMTYPE	FSK	Closed Loop   Central Control   Stand Alone	
COMTYPE	Fiber	Closed Loop   Central Control   Stand Alone	
COMTYPE	Fiber and Radio	Closed Loop   Central Control   Stand Alone	
COMTYPE	None	Closed Loop   Central Control   Stand Alone	
COMTYPE	Radio	Closed Loop   Central Control   Stand Alone	
MASTER	#REF!	Yes   No	

OK

Show Help >>

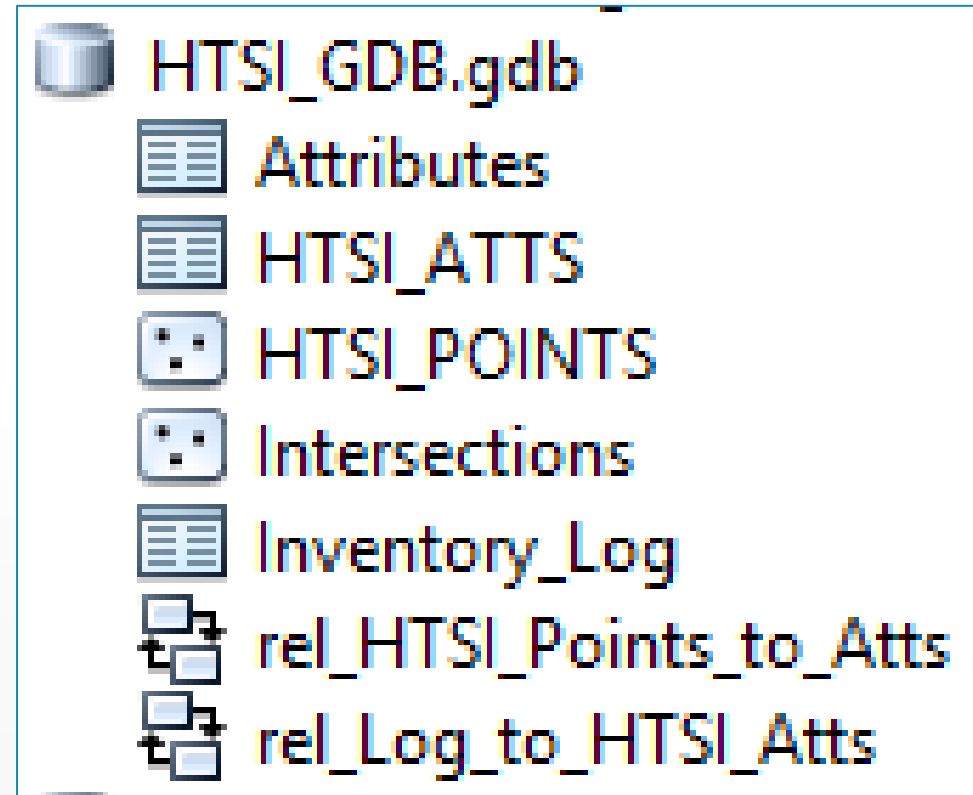


# Data Processing

- Preprocessing
- Loading signal data
  1. Locate signals (multiple)
  2. Locate signals (single)
  3. Add new intersection
  4. Map domain values
  5. Load to HTSI

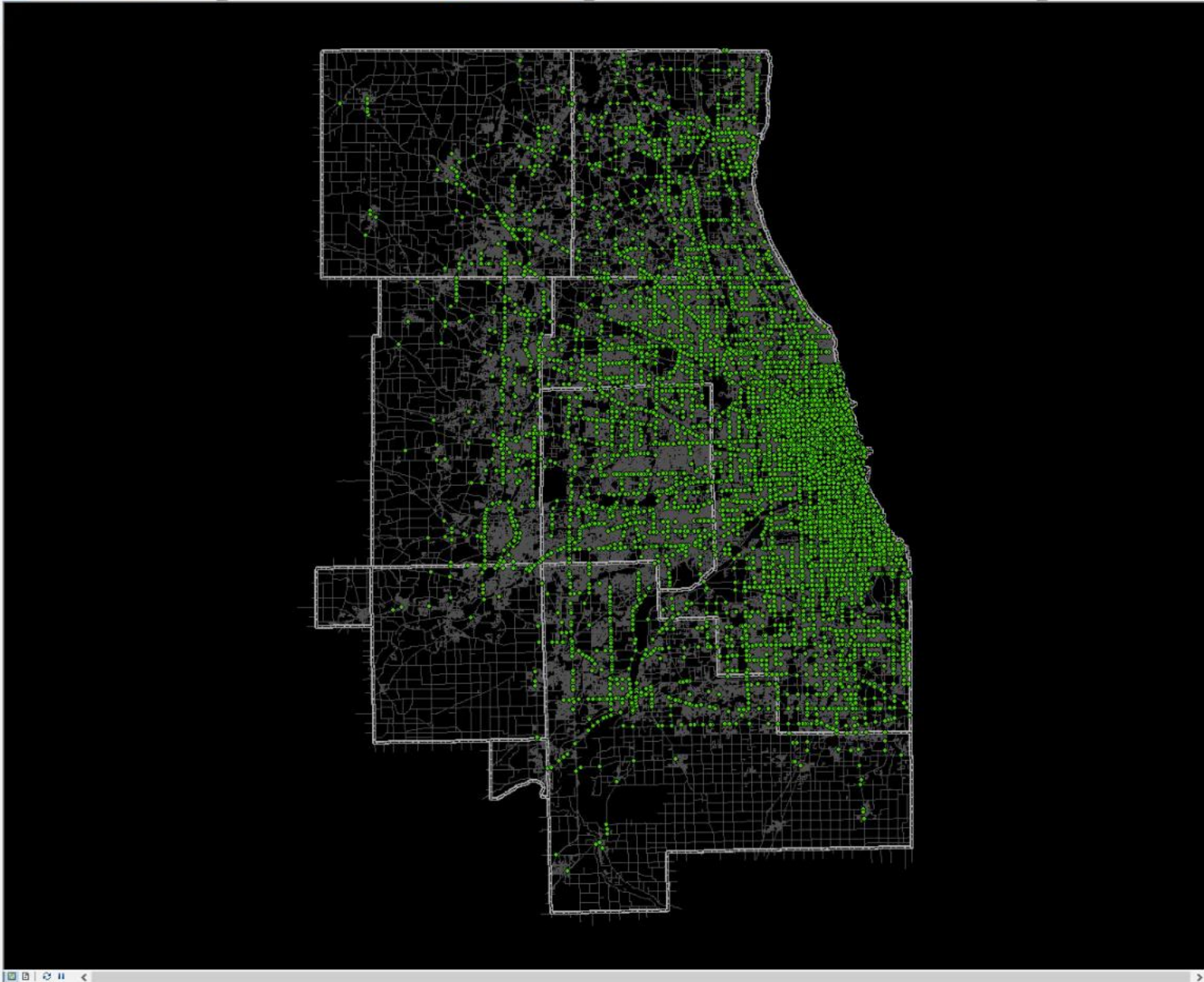
# Database Structure

- ArcGIS file geodatabase
  - HTSI\_POINTS (feature class)
  - HTSI\_ATTTS (table)
    - Inventory log
    - Relationship classes



## Table Of Contents

- Layers**
- V:\Transportation\Highway\HighwayTraf
  - HTSI\_POINTS
  - HTSI\_POINTS**
  - V:\Administrative\_and\_Political\_Boundari
  - MPOcounties\_CMAP\_201409
  - S:\Projects\SignalInventory\production\lr
  - IRIS\_2015\_ISPE\_MPOCounties
  - IRIS\_2015\_ISPE\_MPOCounties
  - 2015 High-Resolution Color Imagery



## Catalog

- Location: HTSI\_ATT
- S:\AdminGroups\ResearchAnalysis\ADB
  - S:\AdminGroups\ResearchAnalysis\ADB\GIS
  - T:\
  - V:\
  - Administrative\_and\_Political\_Boundaries
  - Cadastral\_and\_Land\_Planning
  - Demographic\_and\_Forecast
  - Documentation
  - Environment\_and\_Natural\_Resources
  - Facilities\_and\_Structures
  - Imagery\_and\_Raster
  - Modeling
  - Policy
  - Secure
  - Surveys
  - Transportation
    - Aviation
    - BikePed
    - Freight
    - Highway
      - AADT\_VMT
      - Crash\_Data
      - HighwayTrafficSignalInventory\_CMAP\_2
        - Attributes
        - HTSI\_POINTS
        - Intersections
        - Inventory\_Log
        - rel\_HTSL\_Points\_to\_Atts
        - rel\_Log\_to\_HTSL\_Atts
  - HwyPerformanceMonSys\_FHWA\_2016.g
  - ILHighwayInfoSys\_IDOT\_2015.gdb
  - ILHighwayInfoSys\_IDOT\_2016.gdb
  - NatHwyPlanningNetwork\_FHWA\_2016.g
  - NationalBridgeInventory\_NTAD\_2016.gd
  - StrategicRegionalArterials\_Files\_2011.gd
  - Streets\_Navteq\_201701.gdb
  - Streets\_Navteq\_201802.gdb
  - AlternativeFuelingStations\_DoE\_2016.shp
  - ExpresswayCrashRates2008to2012\_CMAP
  - Intersections\_Cook\_201504.shp
  - Interstates\_CMAP\_200801.shp
  - MajorRoads\_IRIS\_Current.lyr
  - NavteqLocator\_201701\_AltStreets
  - NavteqLocator\_201701\_Composite
  - NavteqLocator\_201701\_Streets
  - NavteqLocator\_201802\_AltStreets
  - NavteqLocator\_201802\_Composite
  - NavteqLocator\_201802\_Streets
  - RoadNoise\_USDOT\_MapService.lyr
  - Roads\_Chicago\_201108.shp
  - Roads\_Cook\_201504.shp
  - Roads\_DuPage\_201501.shp
  - Roads\_Kane\_201512.shp

# Where can I get the data?

- CMAP Data Hub

- <https://datahub.cmap.illinois.gov/datasets/highway-traffic-signal-inventory>
- <https://datahub.cmap.illinois.gov/datasets/highway-traffic-signal-inventory>

The screenshot shows the CMAP Data Hub interface. The header includes the CMAP DATA HUB logo and navigation links: Datasets, Organizations, Groups, About, and a search bar. The breadcrumb trail is: / Organizations / Data / Highway Traffic Signal ...

The main content area is titled "Highway Traffic Signal Inventory for Northeastern Illinois". It includes a description: "The Highway Traffic Signal Inventory is a geodatabase containing information about highway traffic signals in the seven-county CMAP region. The inventory, based on intersections rather than individual signal heads or intersection approaches, contains information about the location and technical features present at signalized intersections." It also mentions that the first version of the database contains only City of Chicago, IDOT, and county signals, and was collected in Q1 of 2017.

On the left sidebar, there is a section for "Data" with a description: "Regional planning datasets produced or hosted by the Chicago Metropolitan Agency for Planning (CMAP). read more". Below this are social media links for Google+, Twitter, and Facebook, and a license section stating "License not specified".

At the bottom, there is an "Additional Info" table:

Field	Value
Source	<a href="http://cmap.illinois.gov">http://cmap.illinois.gov</a>
Author	Chicago Metropolitan Agency for Planning
Maintainer	Thomas Murtha
Version	1.0
Last Updated	February 14, 2018, 18:25
Created	February 14, 2018, 16:45

[ic-signal-inventory](https://datahub.cmap.illinois.gov/datasets/highway-traffic-signal-inventory)

## Next Steps

- Complete solicitation of municipal data. To date, CMAP has requested signal information from approximately 75 municipalities.
- Process municipal data to provide HTSI V2 by the end of 2018.
- Introduce users to the new database.
- Encourage more complete inventory data.
- Technical data processing improvements