



# Village of Big Rock Comprehensive Plan

**Sandy Bell**

Special Projects Manager,  
Big Rock

**Karen Ann Miller**

Executive Planner,  
Kane County

**Trevor Dick**

Senior Planner,  
CMAP

**Ricardo Lopez**

Outreach & Community  
Engagement Specialist, CMAP



# Agenda

1. **Introductions**
2. **Purpose of the meeting**
3. **What is/purpose of a Comprehensive Plan**
4. **Role of Kane County and CMAP**
5. **Planning process and next steps**
6. **Infrastructure Planning**
7. **Group Exercise**



# Introductions

**Sandy Bell**, Special Projects, Village of Big Rock

**Karen Miller**, Executive Planner, Kane County

**Trevor Dick**, Senior Planner, CMAP

**Ricardo Lopez**, Community Outreach Specialist, CMAP



# Purpose of Tonight's Meeting

- To obtain residents input early in the planning process
- To introduce the project and discuss the benefit's of the Village updating its current Comprehensive Plan
- To ask residents about their issues and opportunities in Big Rock and to work towards a shared vision for the village in the year 2020.



# What is/What are the Benefits of a Comprehensive Plan

- The Village's current Comprehensive Plan was adopted by the Village Board in 2003.
- A need for an up-to-date shared vision that will be the Village's roadmap for the next 15-20 years
- It will be written to be flexible and not set in stone
- It will become a guiding document to assist the village plan for the future
- It will assist the Village in applying for and receiving grants
- Planning is not zoning, and zoning is not planning



# What is/What are the Benefits of a Comprehensive Plan

- The Plan will address:
  - Future Land Use
  - Residential
  - Agriculture
  - Economic Development
  - Natural Features
  - Transportation and Circulation
  - Community Facilities and Infrastructure



# **Role of Kane County and CMAP**

- The Village, County and CMAP will form the project team that will work with the residents and elected and appointed officials to create the plan.
- The Village and Kane County applied for and received planning assistance through CMAPs Local Technical Assistance (LTA) program.



# CMAP's LTA Program

- In 2010 CMAP adopted the GO TO 2040 Regional Plan
- It's the first comprehensive, long-range plan for the Chicago metropolitan area since 1909
- Following adoption of GO TO 2040, CMAP shifted to plan implementation.
- A Key recommendation of GO TO 2040:

***CMAP and its partners should offer technical assistance ... to communities that seek to implement principles of livability.***







# CMAP's LTA Program

- CMAP received approximately 220 project applications from 130 different municipalities and nonprofit groups
- The Village of Big Rock was selected in late 2012 to be part of the LTA program.
- Through the program our planning work is offered **FREE** of charge over the next 10-12 months.



# Planning Process and Next Steps

Based upon community input



# *Comprehensive Plan Public Infrastructure Components*

- Connectivity Trails
- Stormwater Management
- Roadway Rehabilitation
- Wastewater Facilities – Phase 2



# Connectivity Trails

# Connectivity Trails

## *Benefits*

- Increases mobility and travel options
- Improves safety
- Reduces traffic congestion
- Improves community health and quality of life
- Improves air quality and reduces energy consumption
- Reduces household transportation cost burden
- Encourages self-reliance
- Strengthens the local economy



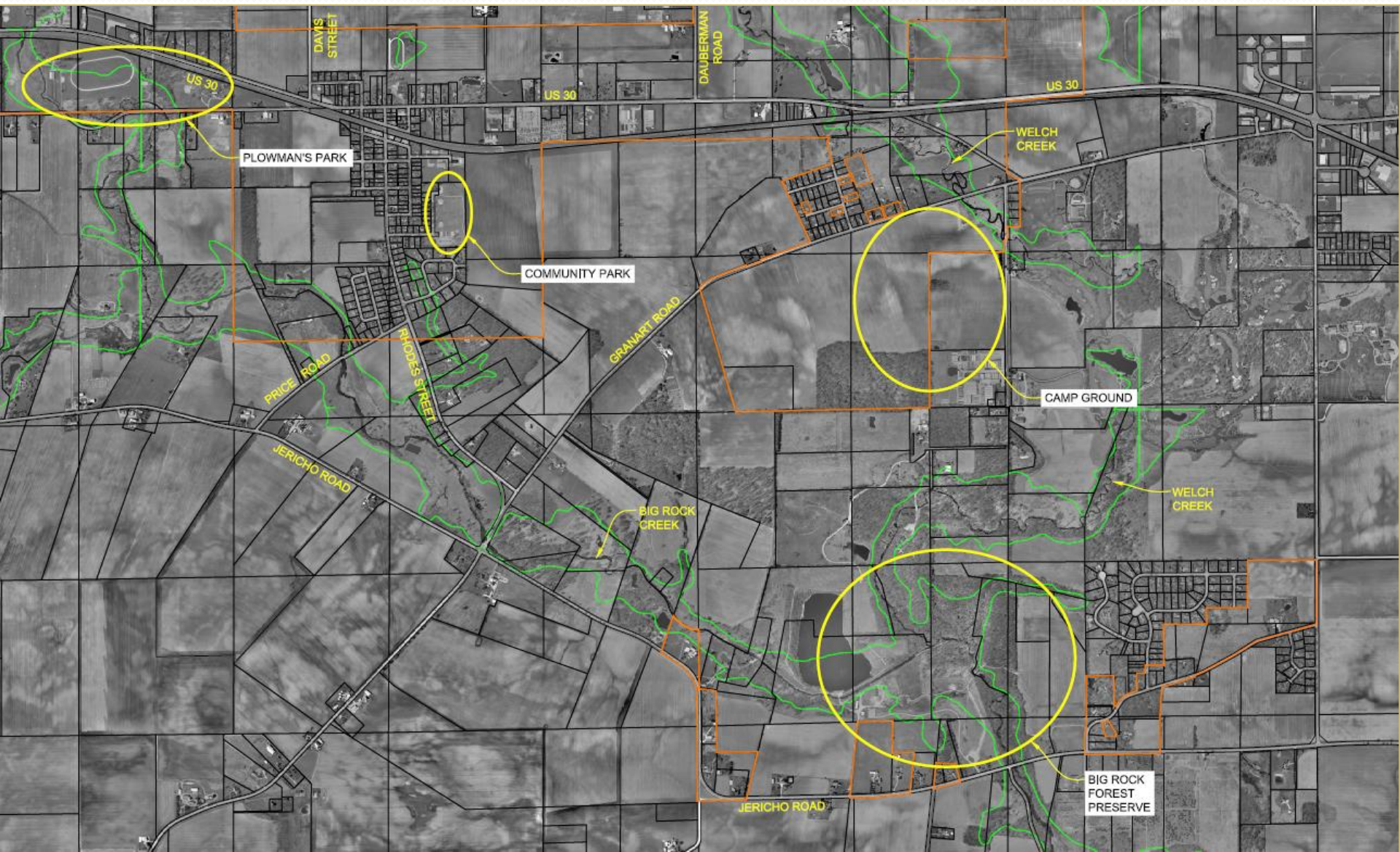
# Connectivity Trails

## *Key Issues*

- Identify areas to connect
- Coordinate with utility corridors
- Establish priorities
- Surface type
- Develop costs
- Prepare report



# Connectivity Trail Areas





# Stormwater Management

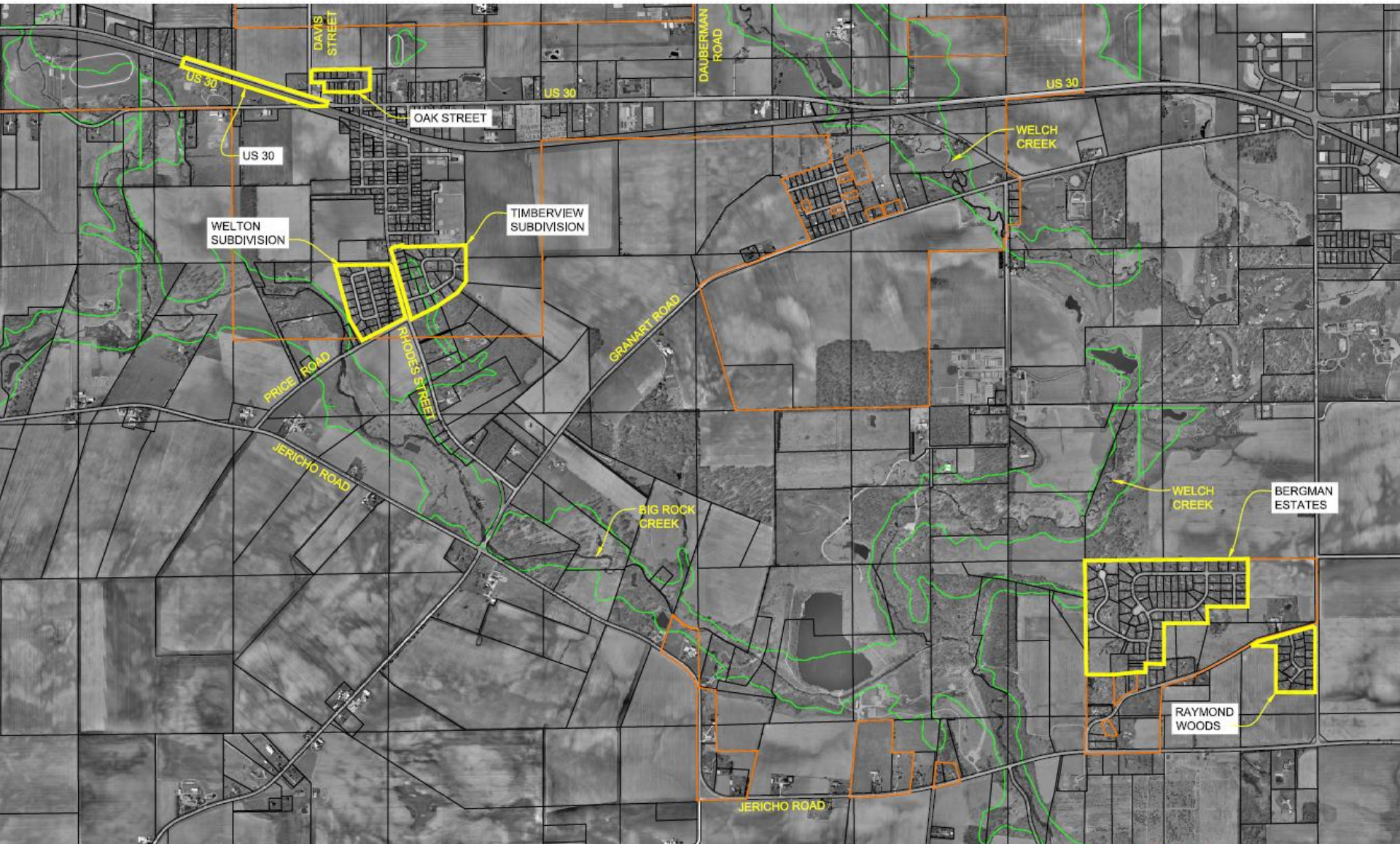


# Stormwater Management

## *Key Issues*

- Completing three stormwater projects
- Update existing storm sewer maps
- Review stormwater alternatives
- Protect investment in roads

# Stormwater Management Areas



# Roadway Rehabilitation

# Physical Condition Inventory

- Pavement Surface Evaluation and Rating System (PASER)
  - Comprehensive pavement management system
  - Baseline inventory all Village roads and streets
  - Set priorities for projects and select alternative roadway rehabilitations



# Roadway Rehabilitation Methods

- Overlay
- Pulverization and overlay
- Pulverization, amendment and overlay
- Full reconstruction



# Wastewater Facilities – Phase 2

# Thank you!

**Sandy Bell**

Sandy.bell@villageofbigrock.us  
(630) 556-4365

**Karen Ann Miller**

millerkaren@co.kane.il.us  
(630) 232-3418

**Trevor Dick**

tdick@cmap.illinois.gov  
(312) 386-8606

**Ricardo Lopez**

rlopez@cmap.illinois.gov  
(312) 386.8766

To learn more about the Village of Big Rock Comprehensive Plan, visit  
<http://www.cmap.illinois.gov/big-rock>.