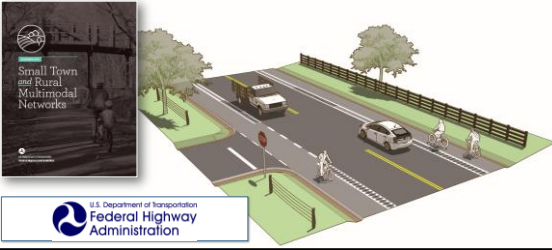


Small Town *and* Rural Multimodal Networks



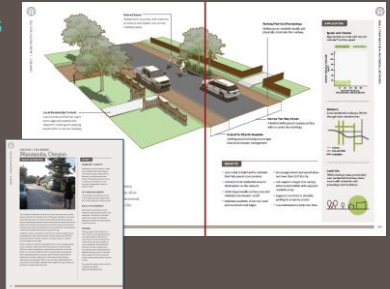
History and Context

- ASHTO Flexibility Guide 2004
- FHWA Policy Statement 2010
- ASHTO Bike Guide 2012
- FHWA Design Flexibility Memo 2013
- ASHTO Pedestrian Guide 2004, 2017
- ASHTO Green Book 2011
- ASHTO Low Volume Roads 2001, 2017
- FHWA Achieving Multimodal Networks 2016
- FHWA Resurfacing Guide 2016
- FHWA MUTCD 2009
- FHWA Separated Bike Lane Guide 2015
- PROWAG 2011, 2013, 2014
- BIKESAFE 2014



Content Areas

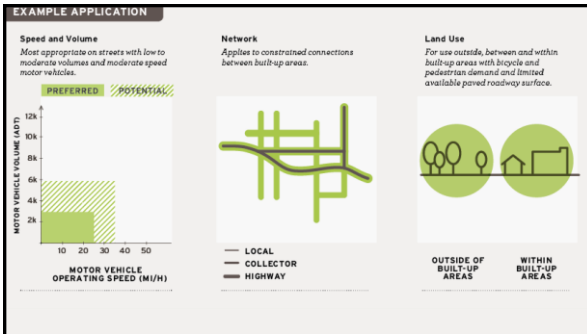
- Application
- Benefits
- Case Studies
- Guidance
 - Geometric Design
 - Markings
 - Signs
 - Intersection treatment
 - Implementation
 - Accessibility

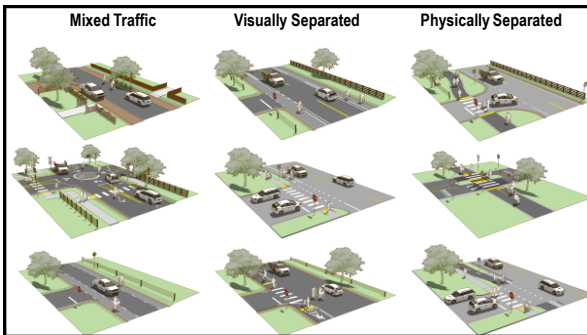


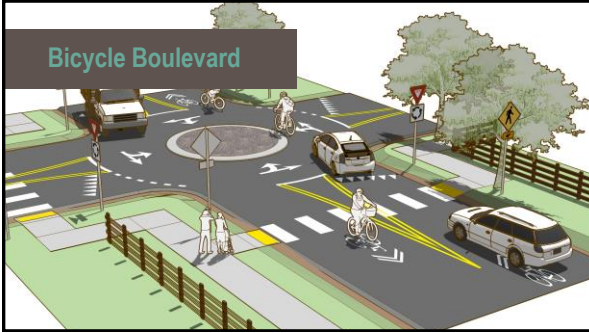
Guide Structure

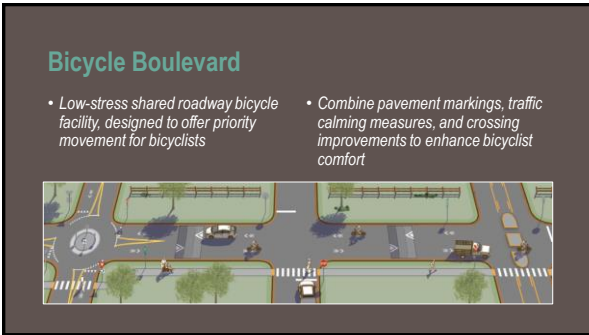
1. Introduction
2. Mixed Transportation Facilities
3. Visually Separated Facilities
4. Physically Separated Facilities
5. Key Network Linkages
6. Planning and Project Development

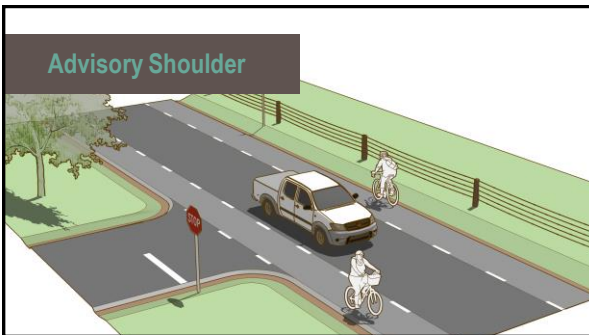
TABLE OF CONTENTS	
Chapter 1-Introduction	Chapter 4-Physically Separated Facilities
1.1 Why a Rural and Small Town Region Could?	4.3 Shared Use Path
1.2 Building a Rural and Small Town Multimodal Network	4.11 Sidewalk
1.4 Who Uses the Rural Network?	4.13 Separated Bike Lane
1.5 How to Use This Guide	
Chapter 2-Creating Networks	Chapter 5-Key Network Opportunities
2.10 Crossing Networks	5.3 Land Management
1.10 Common Challenges in Small Town and Rural Areas	5.7 Transition Zone
1.16 Reference Guide	5.9 School Connections
1.18 Accessibility Standards	5.15 Multinodal Main Streets
	5.21 Bypass
Chapter 3-Mixed Traffic Facilities	5.27 Access to Public Lands
3.3 FHD Roadway	
3.4 Rural Roadway	Chapter 6-Planning and Project Development
3.5 Advisory Shoulder	6.2 The Transportation Planning Process
	6.4 Steps in the Transportation Planning Process
Chapter 3-Visually Separated Facilities	6.5 Key Products in the Transportation Planning Process
3.9 Pavement Shoulder	6.6 What are the Key Products of the Transportation Planning Process?
3.11 Bike Lane	

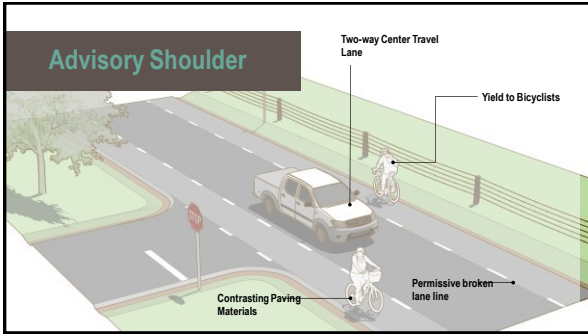










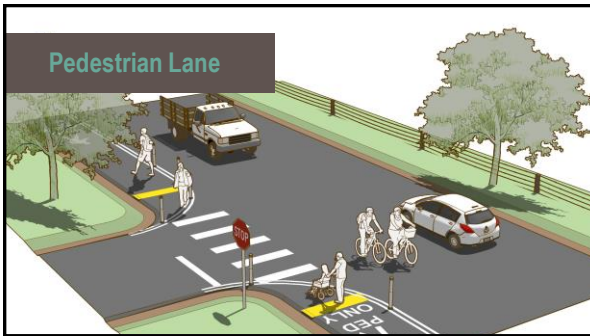


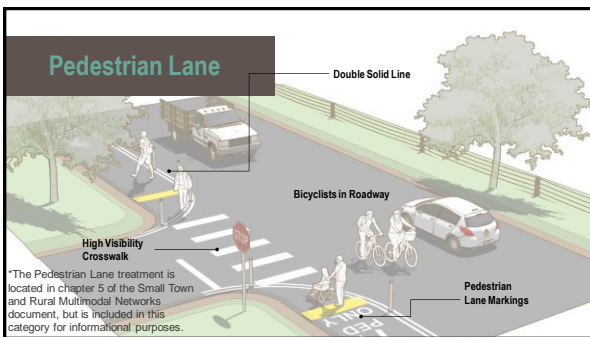
Advisory Shoulder

- Establishes a shoulder on an otherwise too narrow road
- Delineated by pavement markings
- Colored pavement optional
- Must exit shoulder to overtake bicyclists
- Must enter shoulder when yielding to oncoming traffic









Pedestrian Lane

A **pedestrian lane** is an interim or temporary pedestrian facility that may be appropriate on roads with low to moderate speeds and volumes. The lane may be on one or both sides of the roadway and can fill gaps between important destinations in a community.



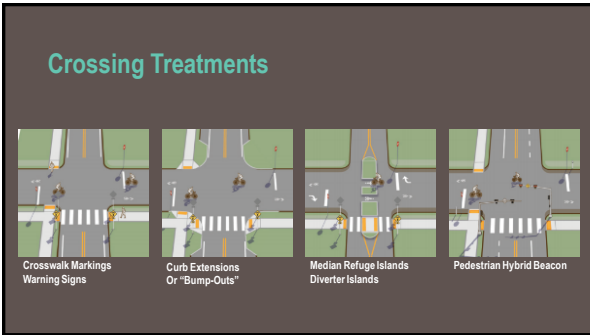
Pedestrian Lane

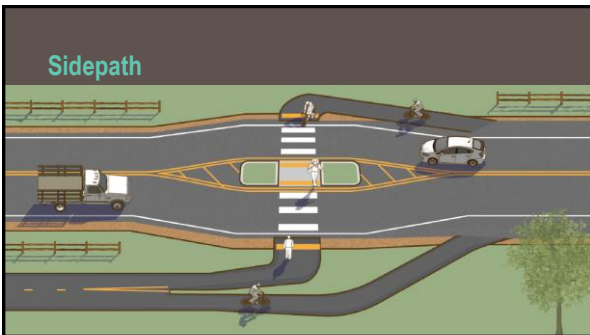
Pedestrian lanes provide interim or temporary pedestrian accommodation on roadways lacking sidewalks. They are not intended to be an alternative to sidewalks and often will fill short gaps between other higher quality facilities. As part of the planning process, agencies should explore issues and the potential challenges a pedestrian lane may face, including:

- Detectability by people with vision disabilities
- Undesired use by bicyclists
- Accessible cross-slope requirements
- Maintenance strategies, such as sweeping and snow removal









Guide Availability

- Free Online PDF (Search "FHWA Small Town Guide")
- Image gallery and mobile-friendly site ruraldesignguide.com
- Questions?

tgustafson@epsteinglobal.com