







ON TO 2050 goals

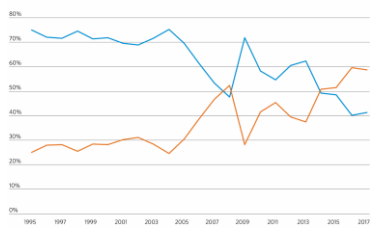
© CMAP, June 2018



Community

Proportion of permitted new housing units in the Chicago MSA, by units in structure

■ 1 unit
■ 2 or more units



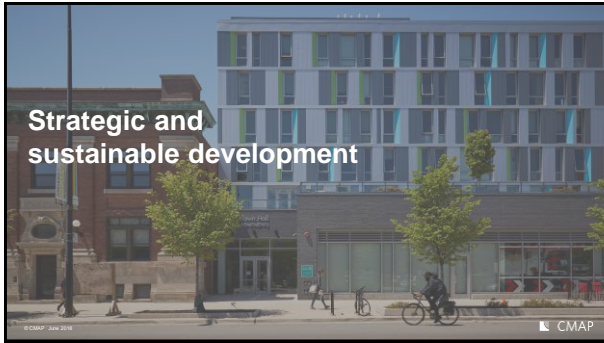
© CMAP, June 2018

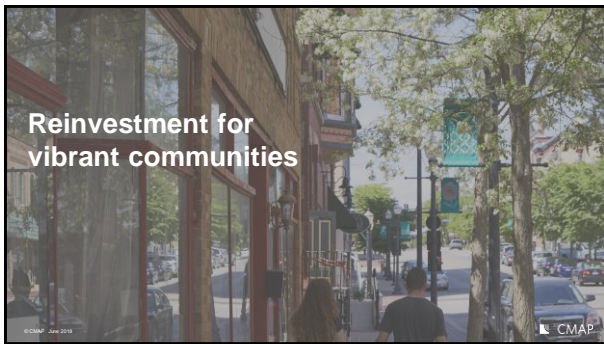


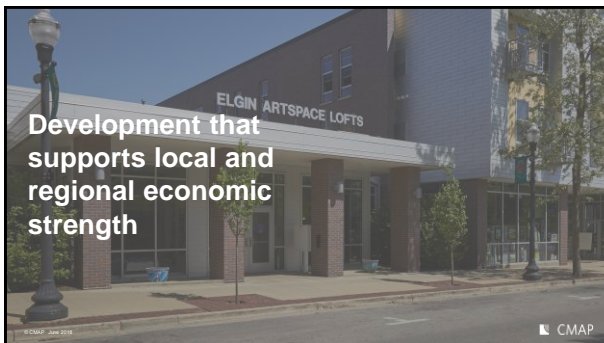
Community goals

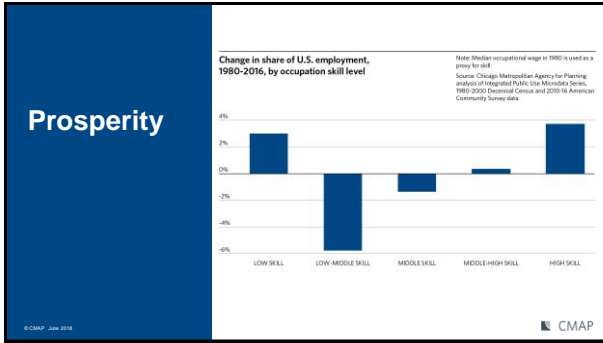
© CMAP, June 2018

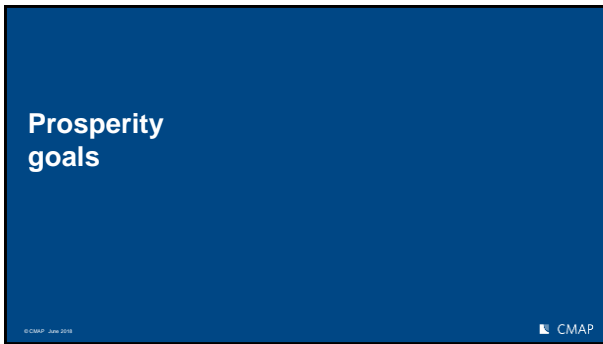


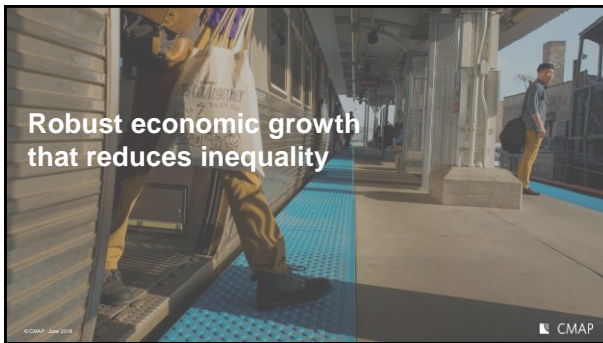


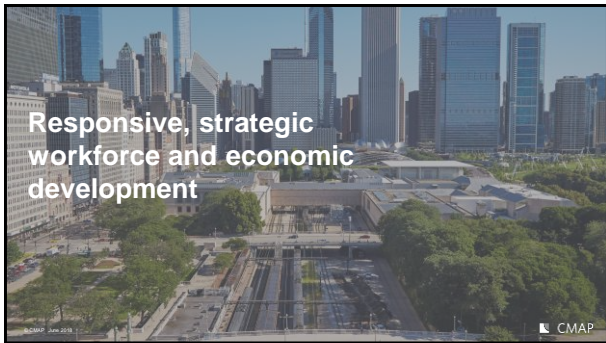


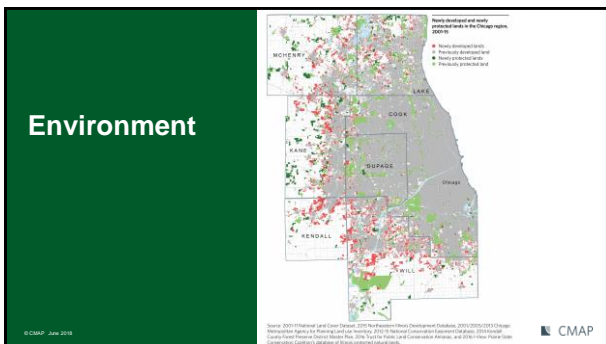


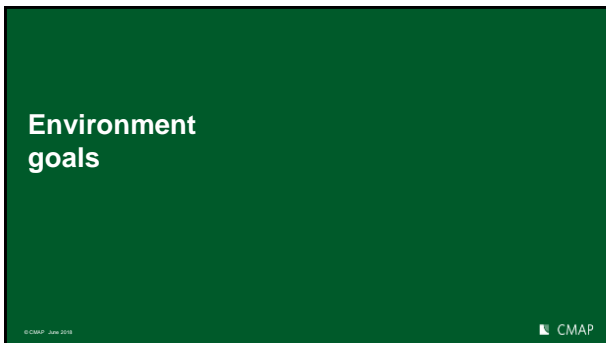


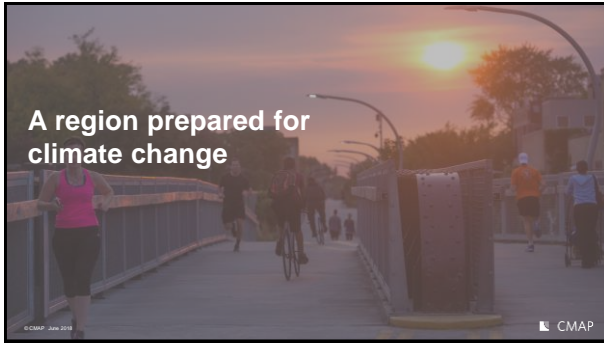




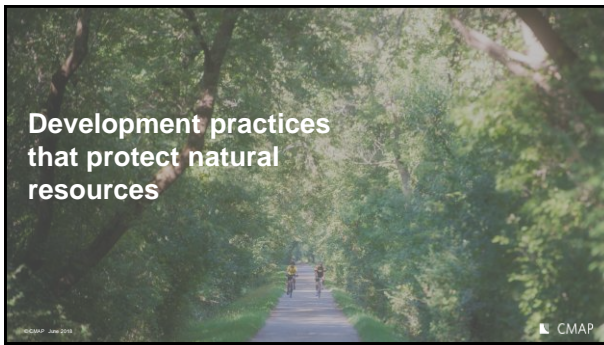












Governance

© CMAP June 2018

Source: Oregon Metropolitan Agency for Planning and Oregon Department of Transportation, 2015; and North Carolina Department of Transportation, 2015.

CMAP

Governance goals

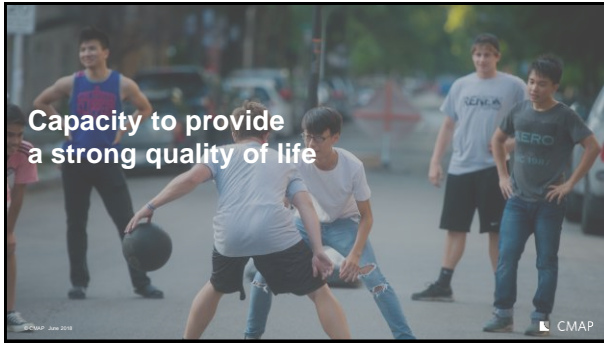
© CMAP June 2018

CMAP

Collaboration at all levels of government

© CMAP June 2018

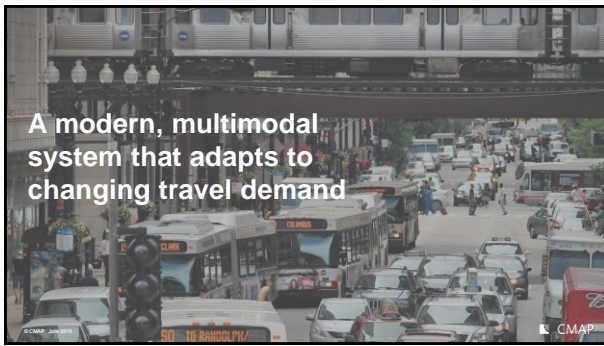
CMAP

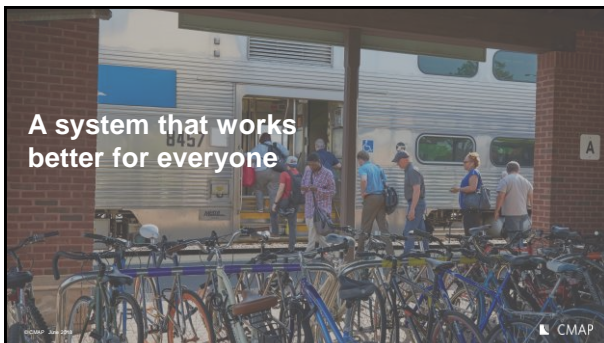


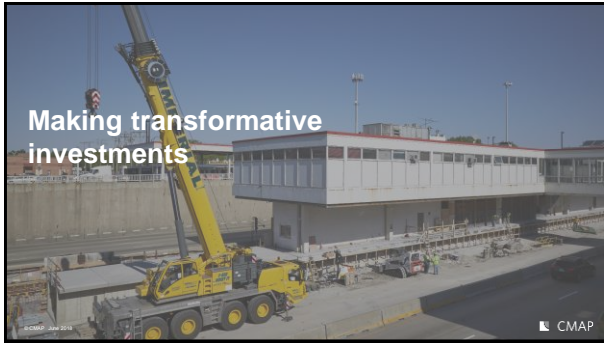


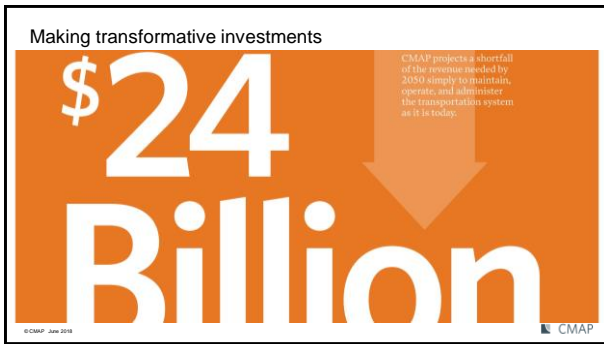


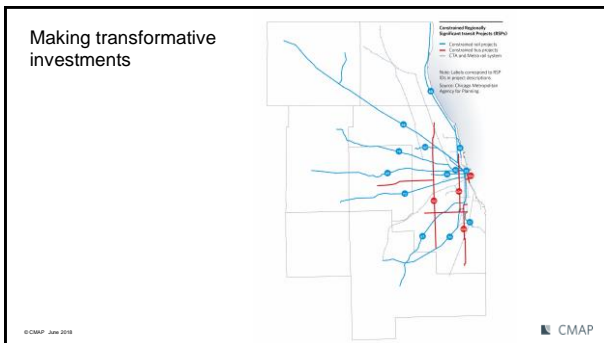




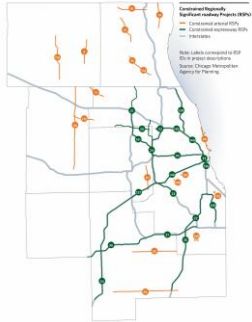








Making transformative investments



© CMAP June 2018

CMAP

Making transformative investments



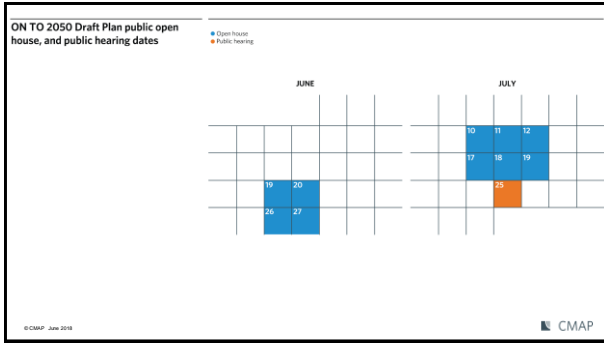
© CMAP June 2018

CMAP

Focus on implementation near- and long-term

© CMAP June 2018

CMAP



The plan will be designed for the web

© CMAP June 2018

Questions?

www.cmap.illinois.gov/onto2050
Elizabeth Schuh
eschuh@cmap.illinois.gov

© CMAP
