



# ILLINOIS INTERNATIONAL PORT DISTRICT MASTER PLAN



Chicago Metropolitan  
Agency for Planning

**Connect with the IIPD**

[www.iipd.com](http://www.iipd.com)

Twitter: @Illinois\_IPD

Facebook: IllinoisInternationalPortDistrict

**Connect with CMAP**

[www.cmap.illinois.gov/programs/Ita/iipd-  
master-plan](http://www.cmap.illinois.gov/programs/Ita/iipd-master-plan)

Twitter: @ONTO2050



# ILLINOIS INTERNATIONAL PORT DISTRICT MASTER PLAN



## Steering Committee Meeting #2 September 15, 2020

### Welcome to the meeting!

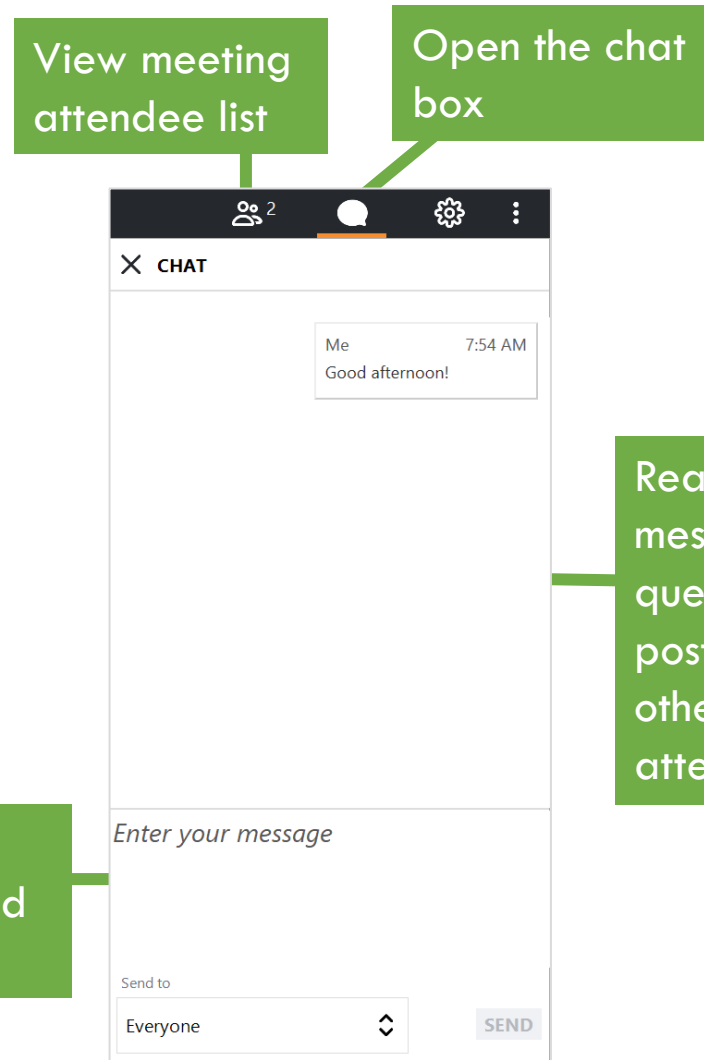
- **As you get settled in, please take some time to access the polling software:**
  - Type your name and organization into the chatbox.
  - On your computer, tablet or phone at **Pollev.com/elainemckenz653**
- **During the meeting, we ask that you:**
  - *Please mute yourself and leave your camera off until the discussion periods.*
  - *Use the chatbox to ask a question at any time.*
  - *Unmute yourself to respond during discussion periods. Please remember to introduce yourself.*
  - *For technical questions, email Hayley at [hcorey@camsys.com](mailto:hcorey@camsys.com) or type in the chatbox.*
- **This meeting will be recorded.**

# Welcome and Update from the IIPD



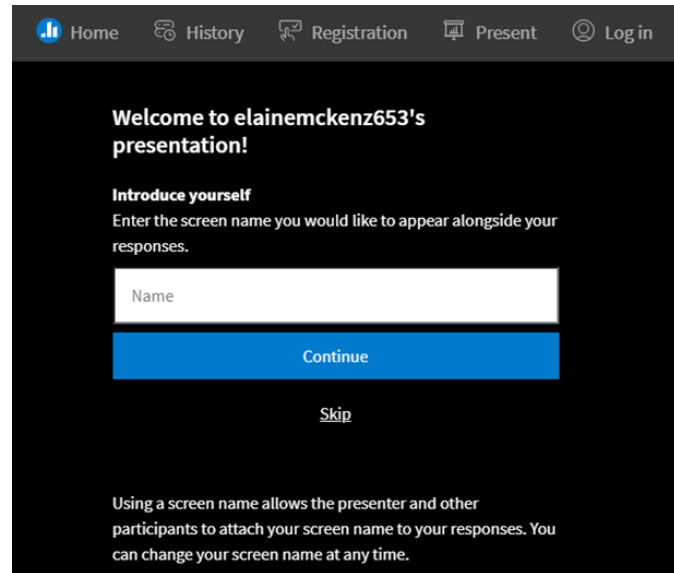
# About Today's Meeting

- During the meeting, we ask that you:
  - Please mute yourself and leave your camera off until the discussion periods.
  - Type your name and organization into the chat box.
  - Use the chat box to ask a question or unmute your audio to participate during discussion periods. Please remember to introduce yourself.
  - For technical questions, email Hayley at [hcorey@camsys.com](mailto:hcorey@camsys.com) or type in the chatbox.



# About Today's Meeting

- **Access the polling software**
  - Go to [Pollev.com/elainemckenz653](https://Pollev.com/elainemckenz653) on your phone, tablet or computer
  - Enter your name to get started



The screenshot shows a mobile application interface with a dark background. At the top, there is a navigation bar with icons and labels for 'Home', 'History', 'Registration', 'Present', and 'Log in'. The main content area displays the following text:

**Welcome to elainemckenz653's presentation!**



**Introduce yourself**  
Enter the screen name you would like to appear alongside your responses.

Below this text is a white text input field with the placeholder text 'Name'. Underneath the input field is a prominent blue button labeled 'Continue'. Below the 'Continue' button is a smaller, underlined link labeled 'Skip'.

At the bottom of the screen, there is a small paragraph of text: 'Using a screen name allows the presenter and other participants to attach your screen name to your responses. You can change your screen name at any time.'



Chicago Metropolitan  
Agency for Planning



**When thinking about your goals for the IIPD, what are the first 3 words that come to mind?**

# Today's Agenda and Goals

## AGENDA

- 9:00 Welcome from the IIPD
- 9:15 About Today's Meeting
- 9:20 Review of Master Plan Phase I
- 10:00 Discussion and Polling
- 10:40 Next Steps
- 11:00 Adjourn

## GOALS FOR TODAY

- Share findings from Phase I and gather feedback
- Inform Scenario Development Process in Phase II
- Begin conversations around future opportunities and partnerships



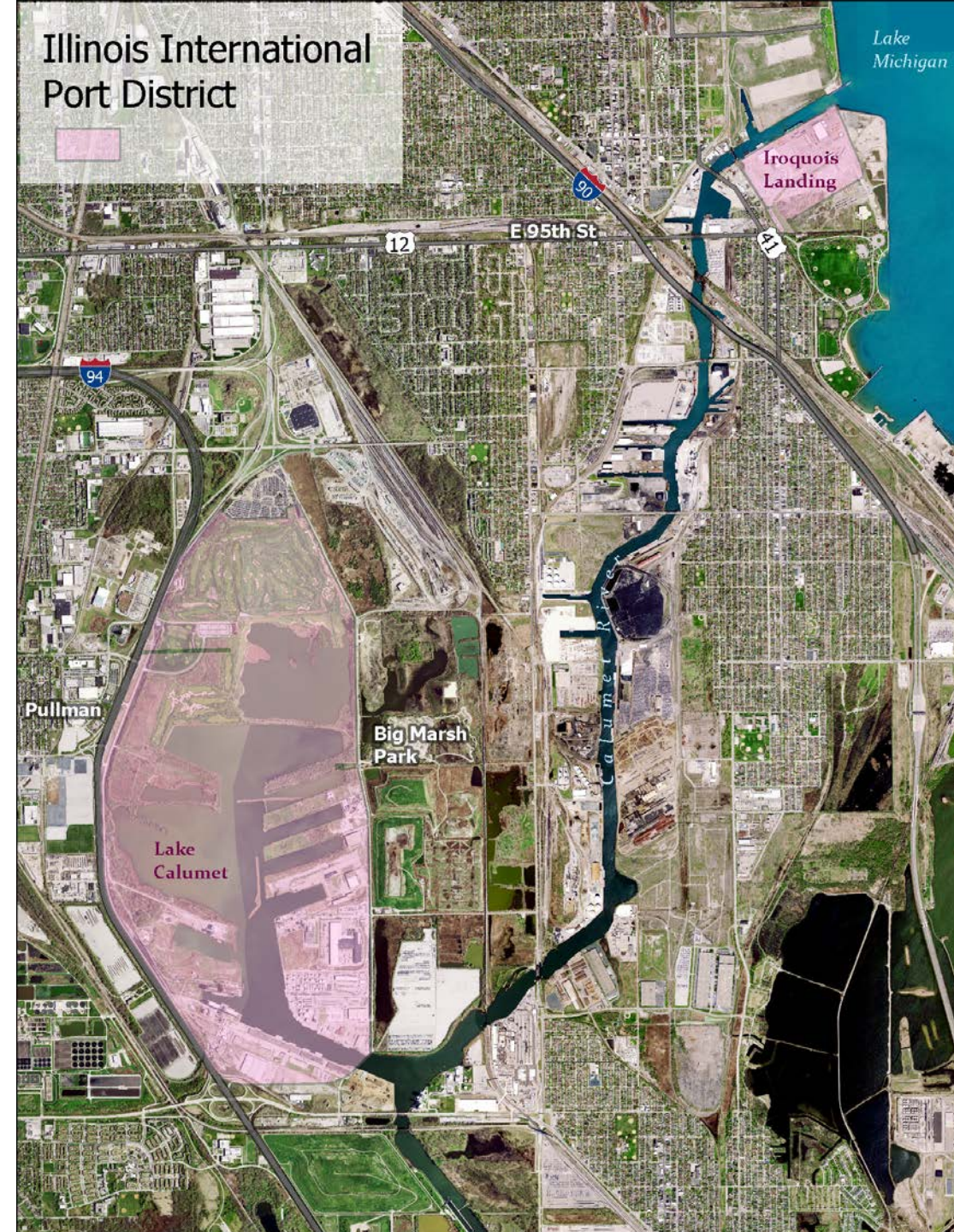
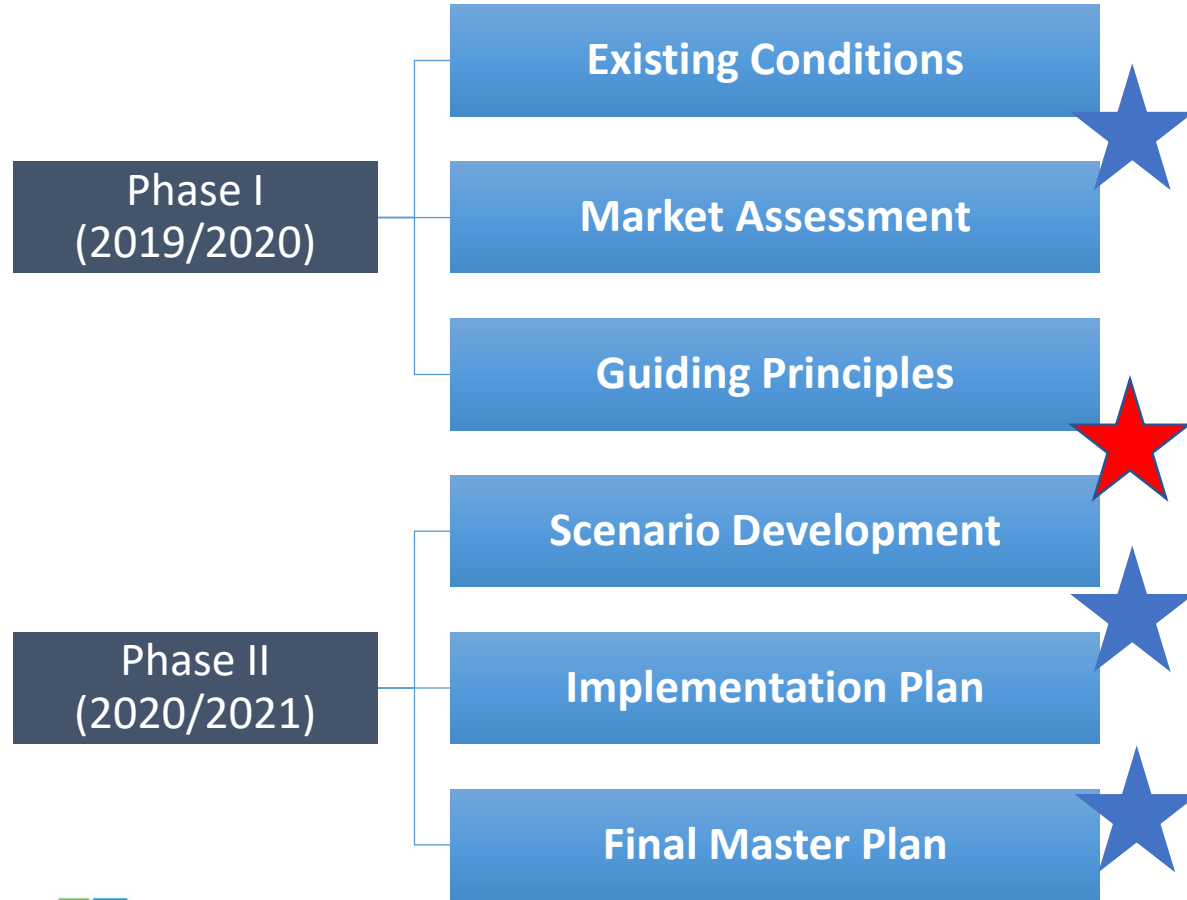
Chicago Metropolitan  
Agency for Planning

# Master Plan Phase I





# Master Plan Core Elements



Chicago Metropolitan Agency for Planning

# Phase I Activities

- Existing Conditions
  - Reviewed existing data and planning studies for the port and study area
  - Researched industrial, commercial, and environmental factors
  - Conducted stakeholder interviews
  - Developed peer comparisons
- Market Assessment
  - Assessed freight trends and opportunities related to the IIPD
  - Developed list of potential freight- and non-freight opportunities at the IIPD
- Guiding Principles
  - Incorporated “E.R.I.C.” initiative
  - Conducted public survey and developed information sharing tool



# Public Engagement Survey

## ENGAGEMENT

~100 completed surveys,  
500+ visitors

English & Spanish pages

East Side, Pullman with  
highest response rates



## TAKEAWAYS

Environmental remediation

Economic development  
and job creation

Critical challenges =  
large and institutional



## NEXT STEPS

Community engagement  
presentations

Close survey end of Sept.

Plan virtual community  
open house in Fall



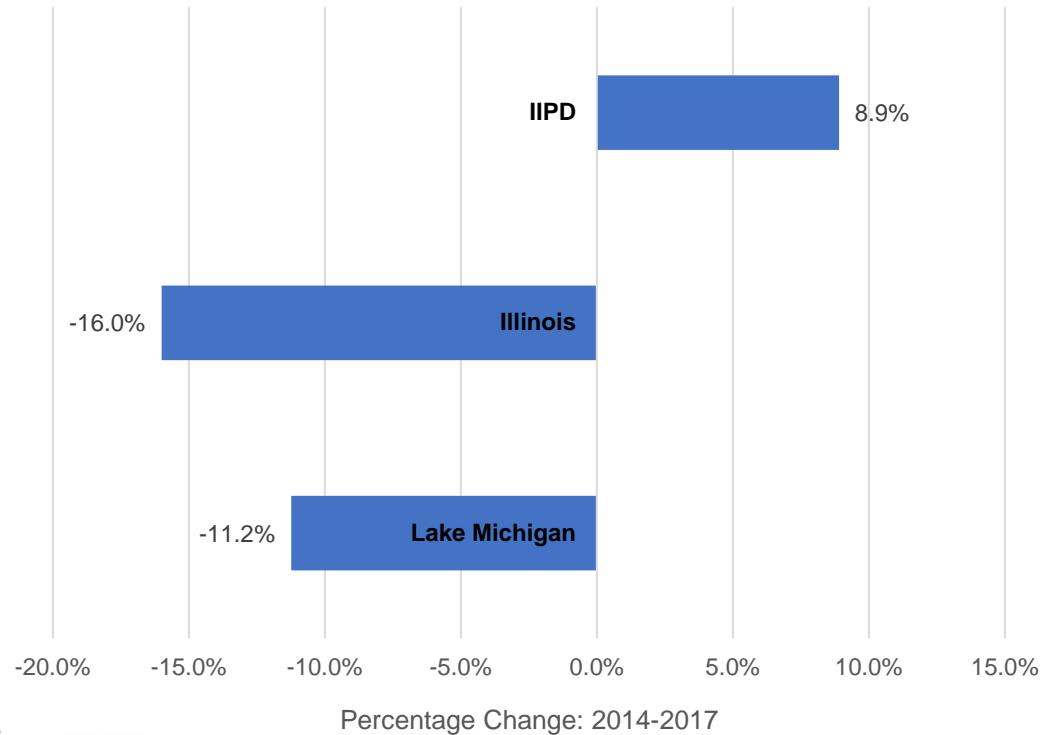
Chicago Metropolitan  
Agency for Planning

# Key Findings

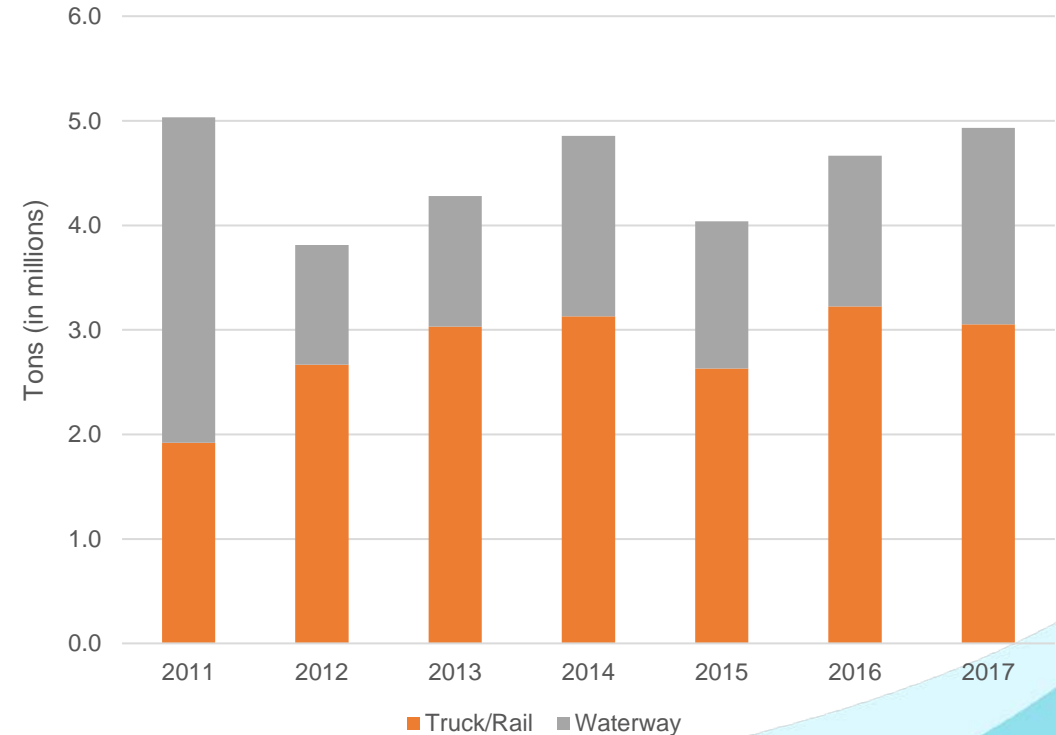


# 1.a. Freight at the IIPD is Growing and Volatile

## Changes in Total Waterway Volumes 2014-2017



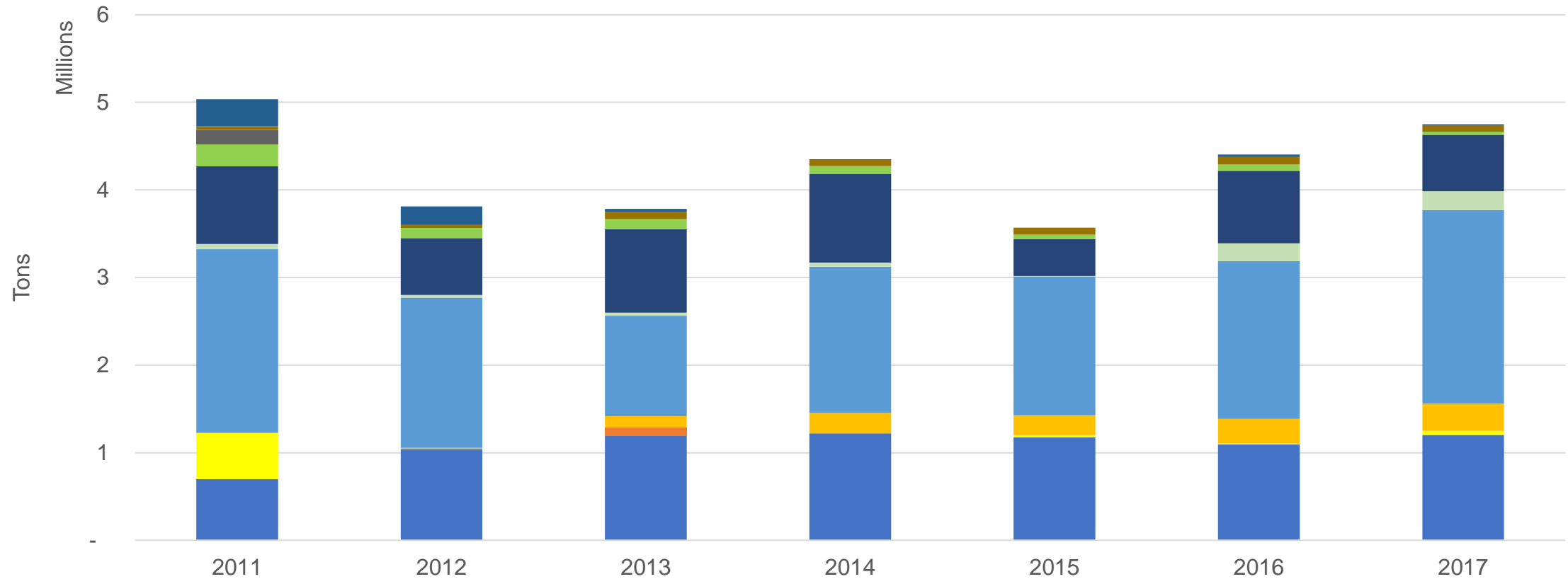
## IIPD Freight Tonnage by Mode 2011-2017



Chicago Metropolitan Agency for Planning

Sources: IIPD; IDOT; USACE Waterborne Commerce Statistics.

# 1.b. IIPD Freight Commodities



- Aggregates
- Metals
- Scrap metals

- Dry bulk
- Non-metallic minerals
- Sugar

- Grain
- Petroleum products
- Misc.

- Lumber
- USAID Agricultural (PL480)



Chicago Metropolitan Agency for Planning

Source: IIPD

# 2. The IIPD is Positioned to Handle Growing Freight Markets

- Commodities currently handled at the IIPD are expected to grow in the Chicago region
  - Construction materials, agriculture, chemicals and petroleum
- Multimodal access supports competitive pricing and supply chain resiliency
- Yet significant infrastructure investment is needed for handle future growth (i.e. Butler Drive improvements, dockwall repair)



Chicago Metropolitan  
Agency for Planning

# 3. Multimodal Connectivity is the IIPD's Strongest Asset

- Opportunities:
  - Water/Rail/Truck Cargo
  - Distribution/Warehousing
  - Truck Staging and Parking
  - Intermodal Container Storage and Staging
  - On-Site Green Energy Generation
  - On-Site Manufacturing



Chicago Metropolitan  
Agency for Planning







# 4.b. Non-Freight Opportunities

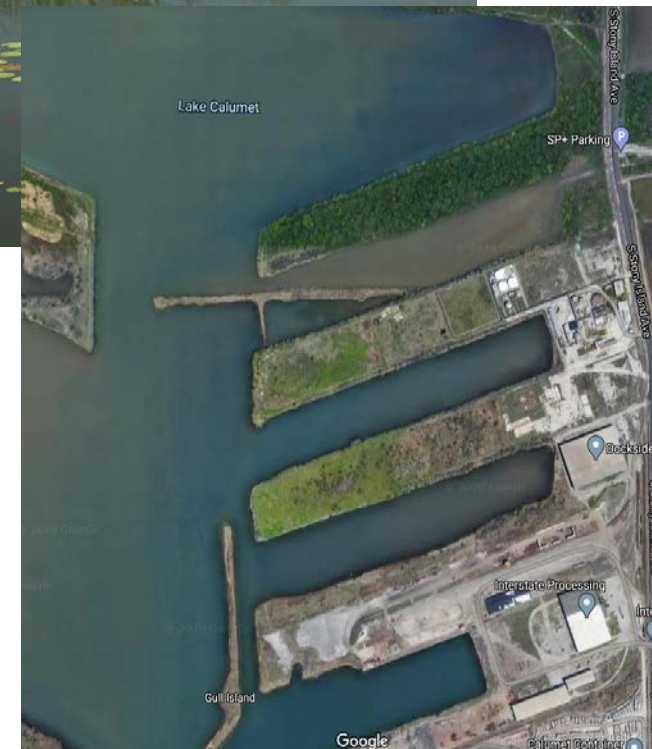
- Golf Course Programs
- Bike/Multi-Use Path
- Great Lakes Cruising
- Boathouse
- Hotel
- Indoor Waterpark / Entertainment Venue
- Industrial Tourism
- Minimal Impact Recreation
- RV Parks
- Repurposing Grain Elevators



Chicago Metropolitan  
Agency for Planning

# 5. Environmental Remediation and Conservation Must be Part of IIPD's Future

- Significant environmental remediation needs
  - Soil and Water Quality
  - Habitat Protection
  - Nearby Superfund Site
- Opportunities
  - Wetland Restoration
  - Ecological Restoration Plan
  - Use of Dredged Materials



# Future Opportunities are Driven by the IIPD's E.R.I.C. Initiative

<b>E.R.I.C. Criteria</b>	<i>What it means</i>	<b>Future Opportunities</b>
<b>Economy</b>	<i>Jobs, new cargo</i>	Increased freight volumes, manufacturing
<b>Environment</b>	<i>Renewable energies, air and water quality</i>	Energy generation, ecological restoration
<b>Resources</b>	<i>Location, land, connectivity</i>	Multimodal transportation, repurposing grain elevators, equipment staging
<b>Recreation</b>	<i>Opportunity to enjoy the port</i>	Bike/multi-use path, boathouse
<b>Industry</b>	<i>New leases and facilities</i>	Distribution, manufacturing or storage
<b>Innovation</b>	<i>Rehabilitation and automation</i>	Enhancing multimodal freight, new technologies
<b>Community</b>	<i>Community amenities and collaboration</i>	Hotel, entertainment venue, festivals
<b>Conservation</b>	<i>Revitalization of natural resources</i>	Square Marsh, Finger Piers



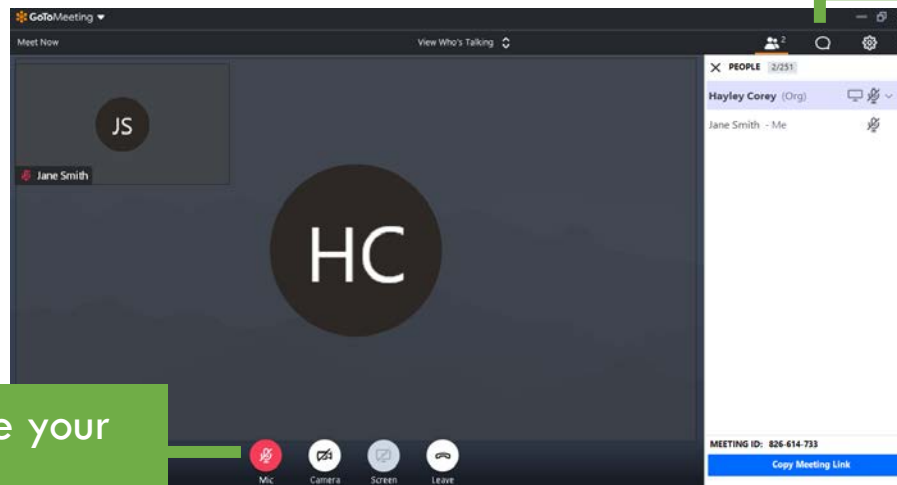
# Discussion



# Instructions

- **Access the polling software**
  - Go to [Pollev.com/elainemckenz653](https://Pollev.com/elainemckenz653) on your phone, tablet, or computer
  - Enter your name to get started

*Please use the chat box or unmute your audio and introduce yourself to participate in the discussion.*



Open the chat box

Unmute your audio

If you called in using a phone rather than computer audio, you may need to use your phone's mute/unmute button to participate.



Chicago Metropolitan Agency for Planning





# Do these findings regarding the IIPD's future direction and opportunities make sense to you?

Yes, in general these findings make sense to me.

Yes, these mostly make sense, but I have something to add. (please provide in the chatbox)

No, I think there's something missing or mischaracterized. (please provide in the chatbox)

I'm unsure right now / need more information.



# How would you prioritize the E.R.I.C. criteria in a future scenario for the IIPD? Please rank the following options from highest to lowest.

Economic (new jobs or cargo activity)

Environment (air and water quality/remediation)

Resources (ensuring best use of land & resources)

Recreation (developing bike path, boathouse, etc.)

Industry (opportunities for manufacturing and freight)

Innovation (green energy, new technology)

Community (hotel or community amenities, collaboration)

Conservation (development of open space, i.e. marshland)





**What is the top idea/concept/activity you want to see in a scenario for the future IIPD?**

# Discussion Questions

- Which opportunities do you think are the most important for the IIPD's future?
- What challenges are most important to overcome? How can we do this?



Chicago Metropolitan  
Agency for Planning

# Phase II: Next Steps



# Scenario Development Process

## Scenarios must be...

- Aligned with IIPD & CMAP goals, and the feedback we've heard today
- Visual and descriptive, showing a plan for each area of the port
- Implementable and feasible, either short or long term
- Clearly understandable and use plain language

## The Scenario Planning Process will...


- Occur Fall, 2020
- Create three alternative scenarios for the future direction of the IIPD
- Share the three alternative scenarios with stakeholders and the general public for feedback
- Work with the Steering Committee to select a preferred scenario (or combination of scenarios)



# Scenario Development Criteria

- Aligns with E.R.I.C. Initiative
- Provides new revenue sources
- Provides jobs with competitive wages and benefits
- Aligns with growing industry sectors
- Aligns with existing Calumet Area needs
- Minimizes negative impacts to the environment
- Positive ROI expected
- Quick, non-complex implementation
- Generates buzz (“Wow factor”)
- Compatible with existing IIPD uses/tenants
- Aligns with City, County, Regional and State goals





# In which types of activities could you see partnership opportunities for your agency and the IIPD?

Infrastructure at the port to handle growing freight volumes

Improving transportation connections to the IIPD

Non-freight opportunities (commercial, recreational)

Environmental remediation/conservation

There are other types of opportunities my agency could partner with the IIPD (please provide in chatbox)

# Discussion Questions

- What criteria for are most critical to include in the Scenario Development Process?
- What activities that the IIPD is currently doing that should be continued to ensure positive future direction?
- What else do we need to know?



# What's next for this group?

- **On September 24<sup>th</sup>, at 11:30:** Attend the IIPD State of the Port virtual address
  - Register at <https://bit.ly/3gykqel>
- **Before September 30<sup>th</sup>:** Help spread awareness for the Master Plan survey and interactive map <https://engage.cmap.illinois.gov/illinois-international-port-district-master-plan>
- **Late Fall 2020 Steering Committee Meeting #3:** Come prepared for a working session, to review draft scenarios and to select a preferred alternative <https://www.cmap.illinois.gov/programs/Ita/iipd-master-plan>
- **Late Fall 2020 Public Open House:** Help us spread the word about the upcoming public open house (details TBD)
- **On an Ongoing Basis:** Consider opportunities for your agency to support/partner with the IIPD







# ILLINOIS INTERNATIONAL PORT DISTRICT MASTER PLAN



Chicago Metropolitan  
Agency for Planning

**Connect with the IIPD**

[www.iipd.com](http://www.iipd.com)

Twitter: @Illinois\_IPD

Facebook: IllinoisInternationalPortDistrict

**Connect with CMAP**

[www.cmap.illinois.gov/programs/Ita/iipd-  
master-plan](http://www.cmap.illinois.gov/programs/Ita/iipd-master-plan)

Twitter: @ONTO2050