



**CHICAGO
REGION
TREES
INITIATIVE**

Our Trees.
Our Communities.
Our Future.

**A Master Plan for the Urban Forest
of the Chicago Region**



Chicago Region Trees Initiative is a collaboration of organizations working across the 7 county Chicago Region -

To preserve, protect and enhance our urban forest resulting improved quality of life.



- **Reduce flooding**
- **Reduce air pollution**
- **Reduce water pollution**
- **Reduce energy usage**
- **Reduce temperature**
- **Reduce noise pollution**
- **Store and sequester carbon**
- **Increase property values**
- **Stimulate local economy**
- **Improve community cohesion**
- **Improve mental health**
- **Improve physical health**
- **Reduce crime**
- **Provide habitat for wildlife**
- **Provide jobs**

Vision and Mission



VISION:

The Chicago Region will be the greenest, most livable, most resilient region in the North America.

MISSION:

The Chicago Region Trees Initiative believes that trees are critical to achieving this vision. We will ensure that trees are healthier, more abundant, more diverse, and more equitably distributed to provide needed benefits to all people and communities that live in the Chicago Region.

Teach people to
value trees

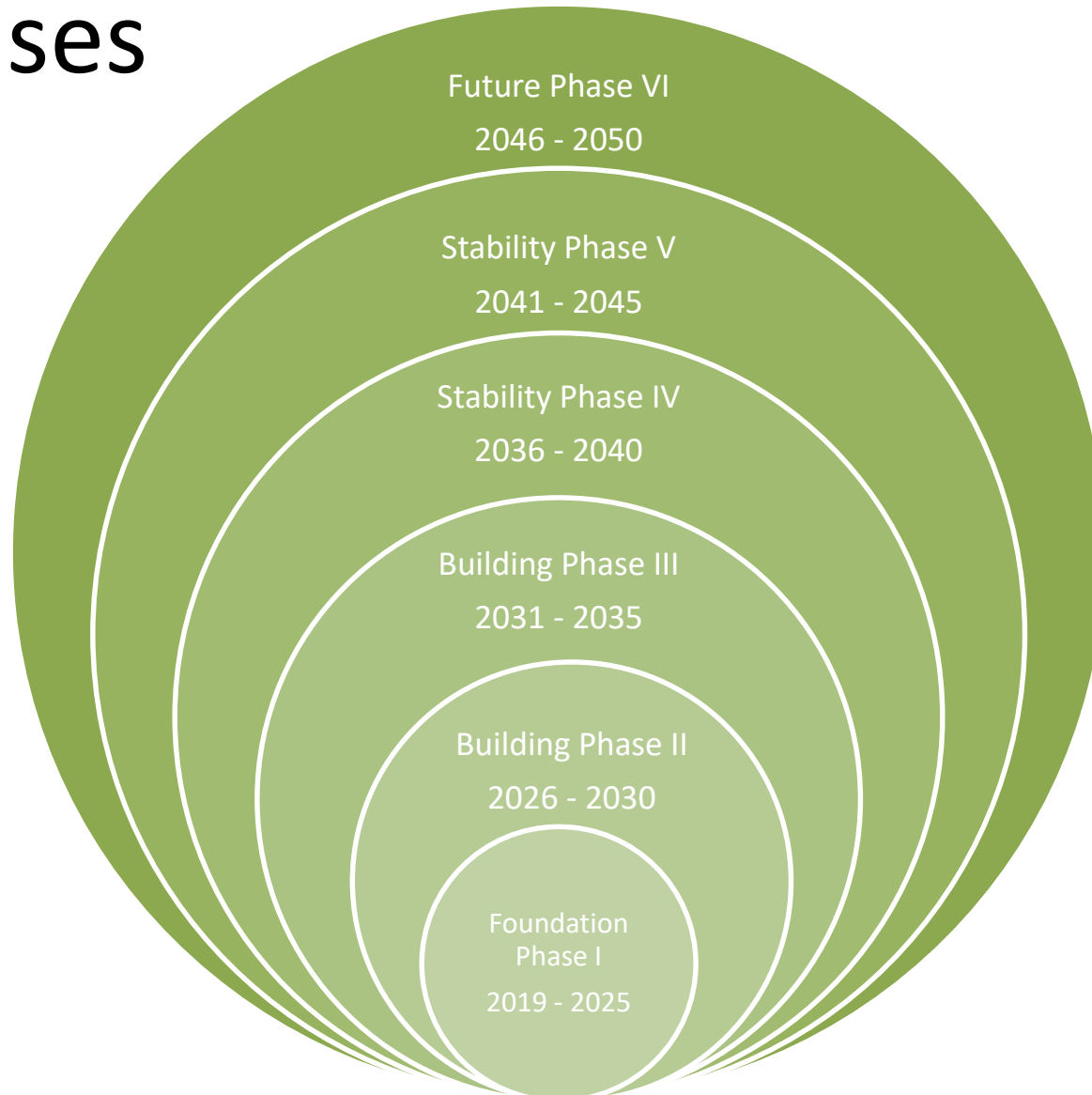
Increase the Chicago
Region's tree canopy

- Improved tree health
- Improved urban forest policy
- Increased funding
- Integration of science

Enhance oak
ecosystems

Reduce impacts to
trees from threats

6 Phases



Teach people to value trees



Internal and external communications:

Communication strategy for the “choir”

Communication strategy for the “Non-choir”



Source: Kodaly Music Education Inst. of Australia

Teach people to value trees



Understand their values, perspectives, and needs

Family	Friends
Safe place to live	Good neighbors
Jobs	Transportation
Good schools	Clean
Strong property values	Well cared for neighborhood
Clean air and water	Access to parks and natural areas
Good health	No flooding
Grocery and drug stores	Good weather

Who are our “people”?



Choir	Non-Choir	
Municipalities	Schools	Churches
Park Districts	Community Colleges	Professionals
Forest Preserve Districts	Utilities	Railroads
Counties	Engineers	Shipping Companies
Decision-makers	Contractors	Business Owners
Landowners	Developers	Libraries
Individual Citizens	Health Care Providers	Legislators
Arborists/Foresters	Policemen	American Public Works Association
Planners	Firemen	
Public Works	Snowplow Operators	
Landscapers	Big Box Stores	
Conservationists/Ecologists	Water Dept. Staff	
Volunteers	Irrigation Companies	
Nurseries	Car Dealers	
Landscape Architects	Cultural Centers	

Increase the tree canopy



Current canopy **18%** (due to EAB)

144 million trees, 8.4 million people
12 trees per person (excluding
buckthorn and honeysuckle)

CRTI Canopy Goal: **22%** by 2050
4% increase

2.4 million more people by 2050



Source: Slideshare

Increase the tree canopy



Improved planning practices:

Streets, parks, homes, stores, churches,
schools, businesses

2.4 million people X 12 trees per person =
28 million trees

4% increase is 22 million trees



Source: Slideshare

Increased tree canopy = increased quality of life



Source: Videezy.com

Urban Trees and Forests of the Chicago Region



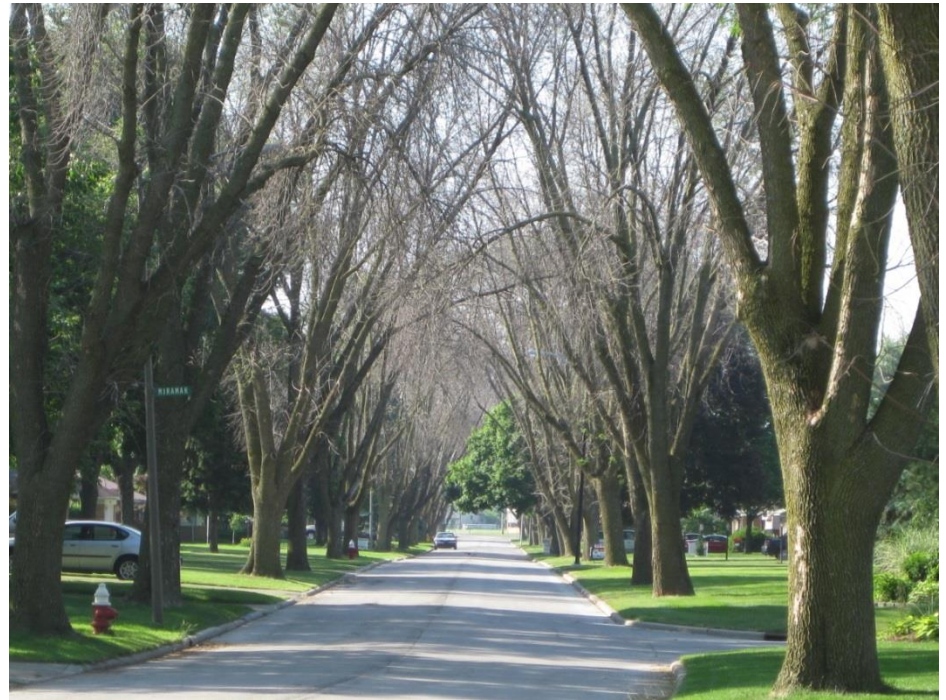
Feature	Measure
Number of trees	157,142,000
Tree and shrub canopy cover	21.0%
Tree cover	15.5%
Most dominant species by:	
Number of trees	European buckthorn, green ash, boxelder, black cherry, American elm
Leaf surface area	silver maple, boxelder, green ash, European buckthorn, black walnut
Trees < 6 inches diameter (%)	73.3%
Pollution removal	
Trees	18,080 tons/year (\$137 million/year)
Trees and shrubs ^a	24,170 tons/year (\$183 million/year)
VOC emissions	11,976 tons/year
Carbon storage	16.9 million tons (\$349 million)
Carbon sequestration	677,000 tons/year (\$14.0 million/year)
Building energy reduction	\$44.0 million/year
Reduced carbon emissions	\$1.3 million/year
Compensatory value	\$51.2 billion



2018 Tree Canopy 18%

Canopy loss from EAB:

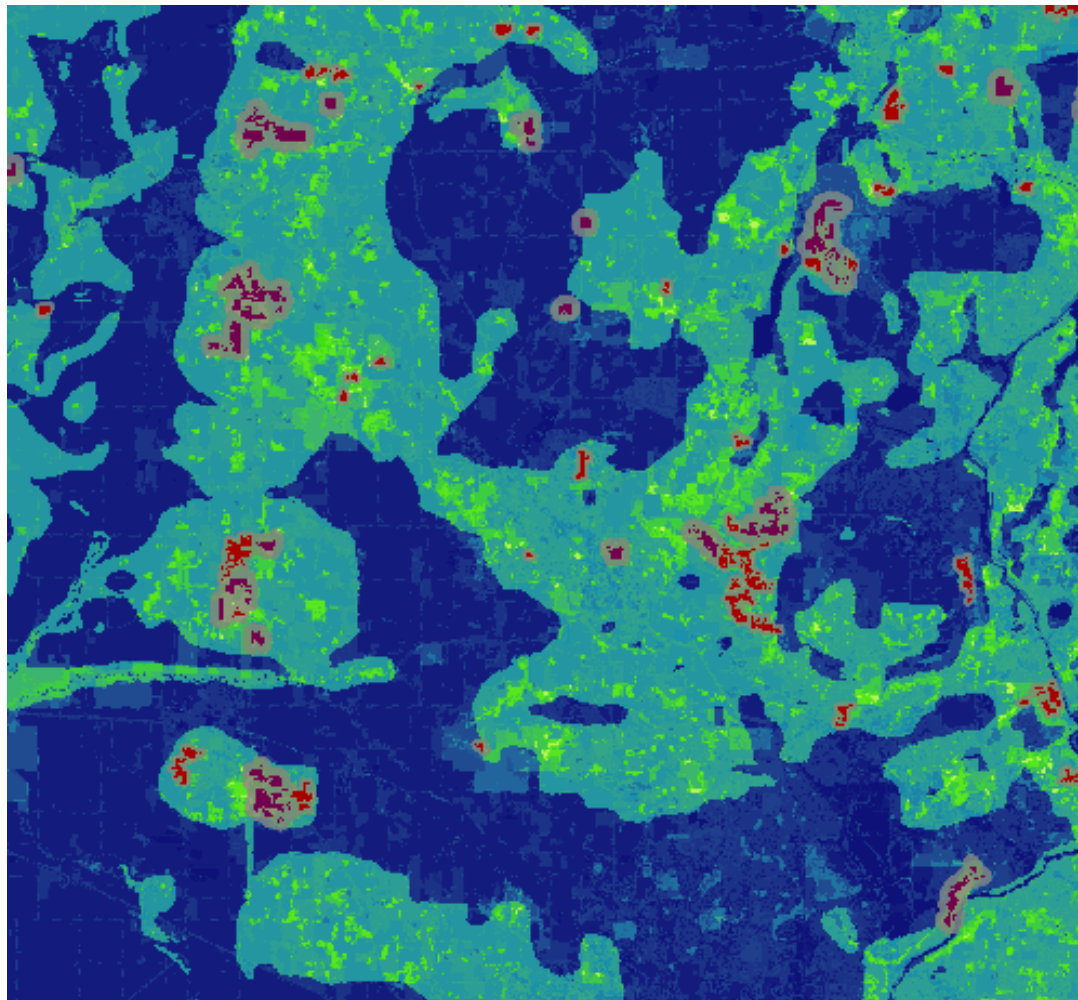
- 13 million ash trees gone
- 15 billion gallons of water?
- 5.75 billion pounds of atmospheric carbon?
- 162.5 million increased kilowatt hours of energy?



Reduced Risks and Threats



Enhanced Oak Ecosystems



Phase I, Foundation 2019 - 2025



- Increase the number of people who understand and value trees
- Update the data (2020)
- Increase advocacy for trees (policy and stewardship)
- Build relationships and knowledge – choir and non-choir
- Improve policies
- Improve professionalism
- Increase capacity for tree production
- Increase training for tree care
- Increase collaborative BMPs for oak ecosystems
- Develop a public/private partnership fund
- Monitor and track success



Foundation

Partner Integration

- Messaging
- Programs
- Reporting



Source: Shakespeare's Bible



Next Steps

July: Revise draft Master Plan based on EAC input

August: Receive and integrate input from Work Groups

September: Work on messaging for shared integration

December: Present Master Plan at CRTI Annual Meeting and Celebration

January 2019: Launch Phase I, Foundation



**CHICAGO
REGION
TREES
INITIATIVE**

Our Trees.
Our Communities.
Our Future.

Lydia Scott, Director
lscott@mortonarb.org