

McKinley Park Neighborhood Plan

**Public Kick-off Meeting
July 18, 2018**

<https://cmap.is/McKinleyPark>



Chicago Metropolitan
Agency for Planning

Purpose for Tonight's Meeting

- Introduce the project and discuss goals and objectives for the McKinley Park Neighborhood Plan
- Hear from you!
- Work together to identify shared priorities

Tonight's Agenda

- 6:30 p.m. Welcome & opening remarks
- 6:35 p.m. Neighborhood plan project overview
- 6:50 p.m. Key issues & opportunities workshop
- 7:50 p.m. Next steps
- 8:00 p.m. Adjourn

About CMAP

- Established in 2005
- Mission: To plan comprehensively for economic prosperity and quality of life
- Serves the third largest metropolitan region in the U.S.
 - 7 Counties
 - 284 Municipalities
 - Over 1,200 units of local government
- To learn more about CMAP, visit www.cmap.illinois.gov



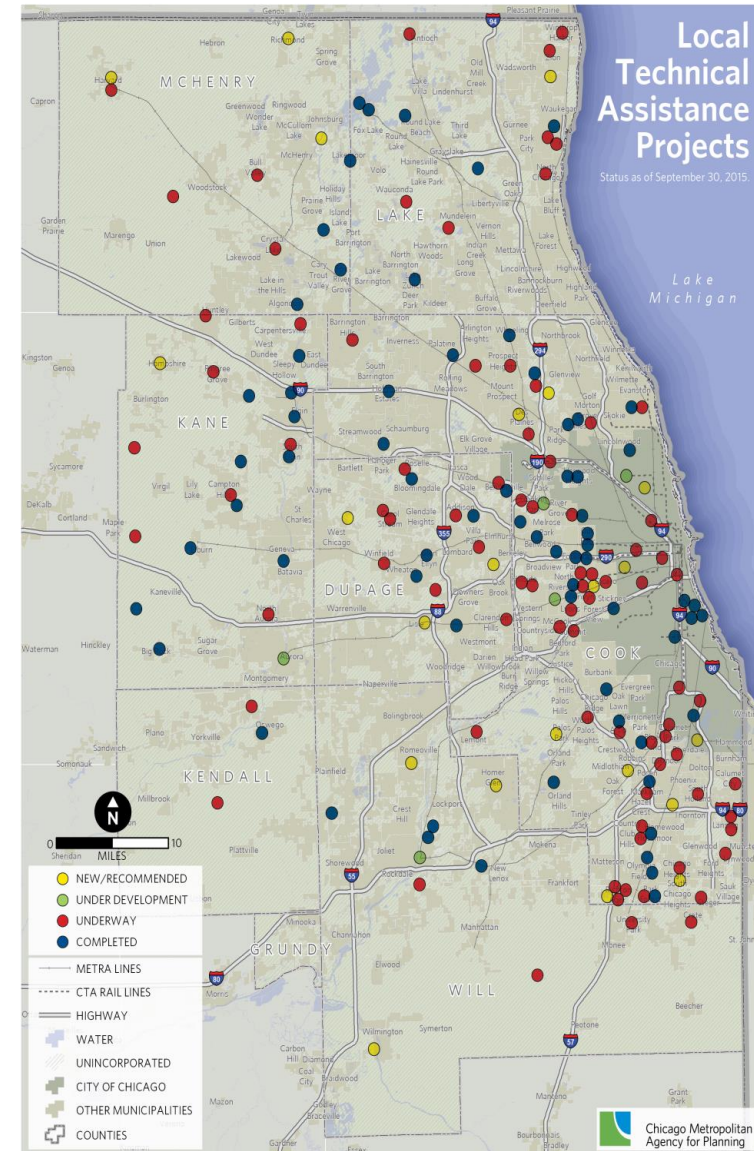
Local Technical Assistance (LTA) Program

- Implements GO TO 2040 by providing direct planning assistance to local communities
- CMAP has issued RFPs annually since 2011 (except 2016)
- To date, more than 144 completed, about 29 currently underway, and 36 have not started

LTA Program

Typical LTA project types:

- Comprehensive plan
- Revisions to zoning or other ordinances
- Subarea or corridor plans
- Topic-specific projects
–water, housing, parking...



Project Background

- Application submitted to CMAP for Local Technical Assistance on June 29, 2017
 - McKinley Park Development Council (MPDC)
- October 19, 2017, CMAP board approved a neighborhood plan for McKinley Park as part of 34 new projects.
- Scope of work developed with feedback from:
 - McKinley Park Development Council (MPDC)
 - City of Chicago Department of Planning & Development (DPD).
 - Center for Neighborhood Technology (CNT)
- MOU signed on March 27, 2018

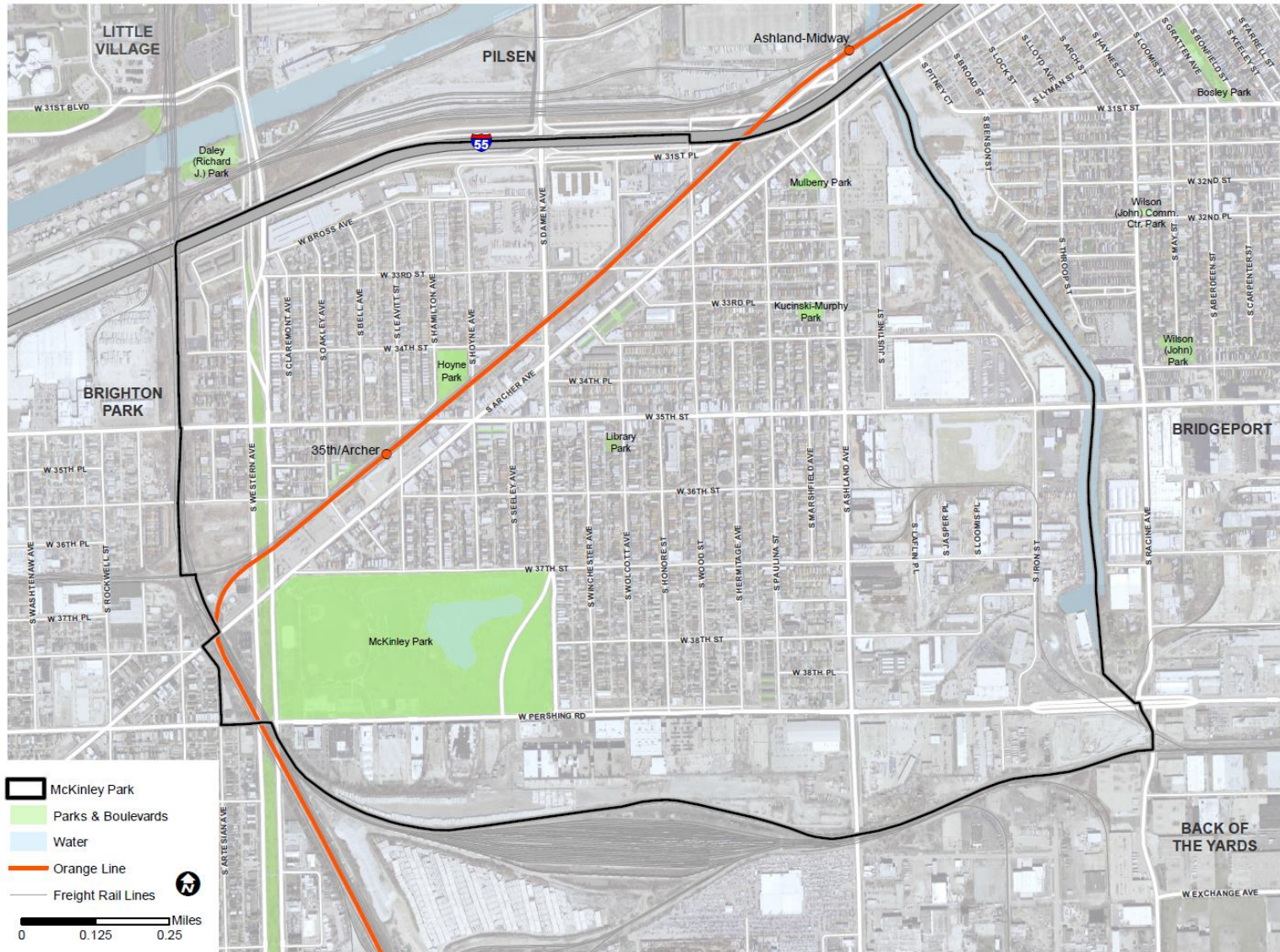
What is a Neighborhood Plan?

- Outlines desired vision for the neighborhood's future
- Provides a roadmap to help achieve that vision
- Contains actions to be taken by the community
- Not set-in-stone, can adapt with change
- Composed of a series of separate, but interrelated, core elements:
 - **Land Use**
 - **Housing**
 - **Economic Development**
 - **Transportation**
 - **Natural Resources**

Why does McKinley Park need a Neighborhood Plan?

- No existing neighborhood plan
- Will help McKinley Park obtain grants
- Will help McKinley Park make decisions and set priorities

Project Area



Areas of Focus

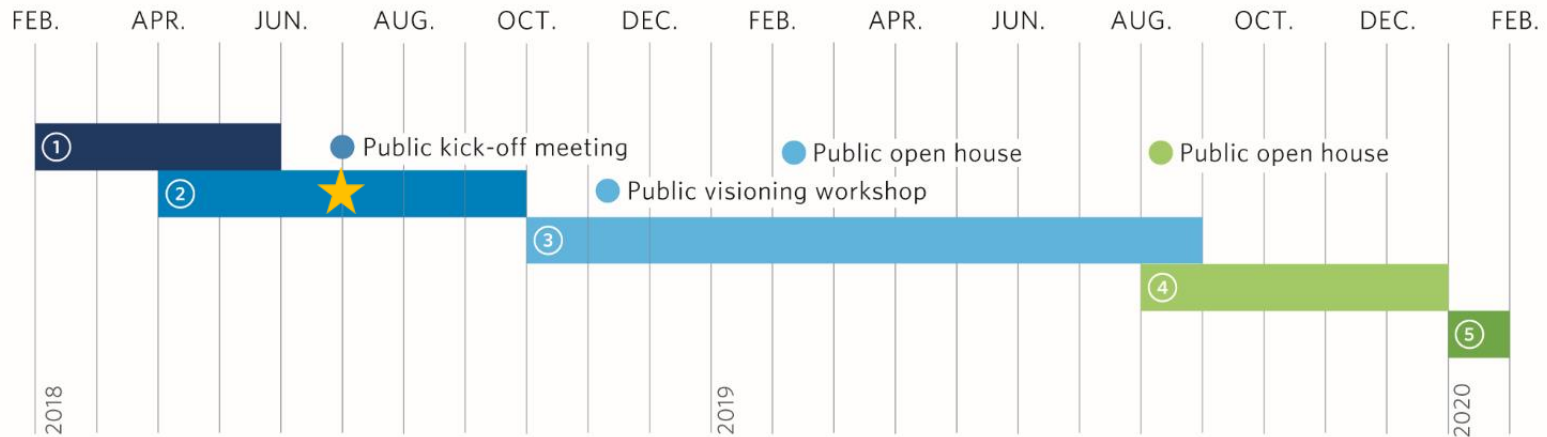
- **Transit-Oriented Development**
 - Evaluate capacity to support future development
- **Commercial Corridors**
 - Examine current conditions and explore future potential
- **Central Manufacturing District**
 - Reinvigorate and explore modern uses
- **Climate Resilience**
 - Build resilience into public policy, planning, and infrastructure

Planning Process

- Five phases to be completed over 24 months



McKinley Park Neighborhood Plan



1. Project orientation

2. Assess existing conditions

3. Draft Neighborhood Plan

4. Public review and approval

5. Implementation

Key Issues & Opportunities Workshop

Workshop Exercise

- **Question 1:** Identify existing strengths & assets
10 minutes
- **Question 2:** Identify top issues & concerns
20 minutes
- **Question 3:** Identify improvements to address challenges
15 minutes

MCKINLEY PARK NEIGHBORHOOD PLAN
Public Kickoff Workshop, July 18, 2018

1) What would you like to preserve about McKinley Park for future generations? Focus on strengths and assets. *(If they are physical places, mark them with a green dot)* 10 mins.

2) What do you consider to be the most important issues or concerns for McKinley Park that need to be addressed in the neighborhood plan? *(If they are physical places mark them with a red dot)* 15 mins.

2A) From all of the issues and concerns that have been discussed, what are your top three issues: 5 mins.

3) What specific projects or actions would you like to see completed to address these issues/concerns? *(If they are physical places, mark them with a blue dot)* 15 mins.

DPD
CHICAGO DEPARTMENT OF PLANNING & DEVELOPMENT

CNT

MCKINLEY PARK
DEVELOPMENT
COUNCIL

Chicago Metropolitan
Agency for Planning

Workshop Instructions

- Get into small groups
- Identify your table Facilitator
- Share your ideas with your group
- Complete and submit individual worksheets

Ground Rules

- No personal attacks
- Seek common ground & understanding
- All ideas are valid
- Speak honestly
- Stay open
- Respect
- Have fun!

Question 1:

What would you like to **preserve**
about McKinley Park for future
generations?

Question 1:

What would you like to **preserve**
about McKinley Park for future
generations?

5 MINUTES LEFT!

Question 1:

What would you like to **preserve** about McKinley Park for future generations?

1 MINUTES LEFT!

Question 2:

What are the **KEY ISSUES** facing the McKinley Park community?

Question 2:

What are the **KEY ISSUES** facing the McKinley Park community?

5 MINUTES LEFT!

Question 2:

What are the **KEY ISSUES** facing the McKinley Park community?

1 MINUTES LEFT!

Question 3:

What specific **PROJECTS OR ACTIONS** would you like to see completed to address McKinley Park's challenges?

Question 3:

What specific **PROJECTS OR ACTIONS** would you like to see completed to address McKinley Park's challenges?

5 MINUTES LEFT!

Question 3:

What specific **PROJECTS OR ACTIONS** would you like to see completed to address McKinley Park's challenges?

1 MINUTES LEFT!

Next Steps

- **For residents & stakeholders:**
 - Build community awareness of planning process
- **For CMAP:**
 - Collect feedback through our kiosks and the digitally accessible online survey through September 14.
<https://mckinleypark.metroquest.com>
 - Publish the Existing Conditions Report
 - Solicit additional public input on relevant topics
 - Synthesize outreach findings, develop the final recommendations, write the plan with detailed action items and responsible parties



Help Us Plan For The Future

WELCOME

McKinley Park residents, we want to hear from you.

CMAP is working with the McKinley Park Development Council to create a neighborhood plan to make your community more livable, walkable, and resilient for years to come.

[View Study Area \(Map\)](#)



En Espanol



Begin

2

PRIORITIES

3

OPPORTUNITIES

4

STAY INVOLVED



We need a Neighborhood Plan, because...

McKinley Park has not had a comprehensive planning process. The plan will ensure on-going and future reinvestment complement and do not compete with one another for limited resources.



McKINLEY PARK
DEVELOPMENT
COUNCIL



WELCOME

2

PRIORITIES

What Is Important To You?



What to do



Next Task

3

OPPORTUNITIES

4

STAY INVOLVED

Order your top 5
items above this line

Industrial Areas

Parks & Open Space

Art & Culture

Sustainability

Business Mix

Transportation

Housing

Image & Identity



Suggest another

Industrial & Manufacturing Areas



Image credit: Flickr user Bob Simpson

This priority seeks to improve, enhance, and reinvigorate the Central Manufacturing District.



Comment



Where Are Changes Needed?

Please drag and drop at least 3 markers on the map.



Community Asset



Development



Transportation



Open Space



Industrial



Other





WELCOME

2

PRIORITIES

3

OPPORTUNITIES

4

STAY INVOLVED

Tell Us About Yourself

What to do

Final Questions (Optional)

What is your connection to McKinley Park?

- ☐ I live here ☐ I work here
☐ I live & work here ☐ I visit here

Ethnicity

Select...

Gender

Select...

Age

Select...

Email address to receive updates:

Type...

Optional comments?

Type...

Submit Final Questions

Skip

Thank You!

Responses to these questions are optional and will be used only to ensure the input received represents the diversity of the community.

Please forward this survey link to others who may be interested in this project!

Please visit the [project webpage](#).

McKINLEY PARK
DEVELOPMENT
COUNCILDPD
CHICAGO DEPARTMENT OF
PLANNING & DEVELOPMENT

Next Steps

- **For residents & stakeholders:**
 - Build community awareness of planning process
- **For CMAP:**
 - Collect feedback through our kiosks and the digitally accessible online survey through September 14.
<https://mckinleypark.metroquest.com>
 - Publish the Existing Conditions Report
 - Solicit additional public input on relevant topics
 - Synthesize outreach findings, develop the final recommendations, write the plan with detailed action items and responsible parties