



CMAP

# A Planning Priorities Report for the City of Sandwich

June 17, 2019



# Agenda

Introduction to CMAP

Project overview

- Background
- Content
- Recommendations
- Next steps

Questions



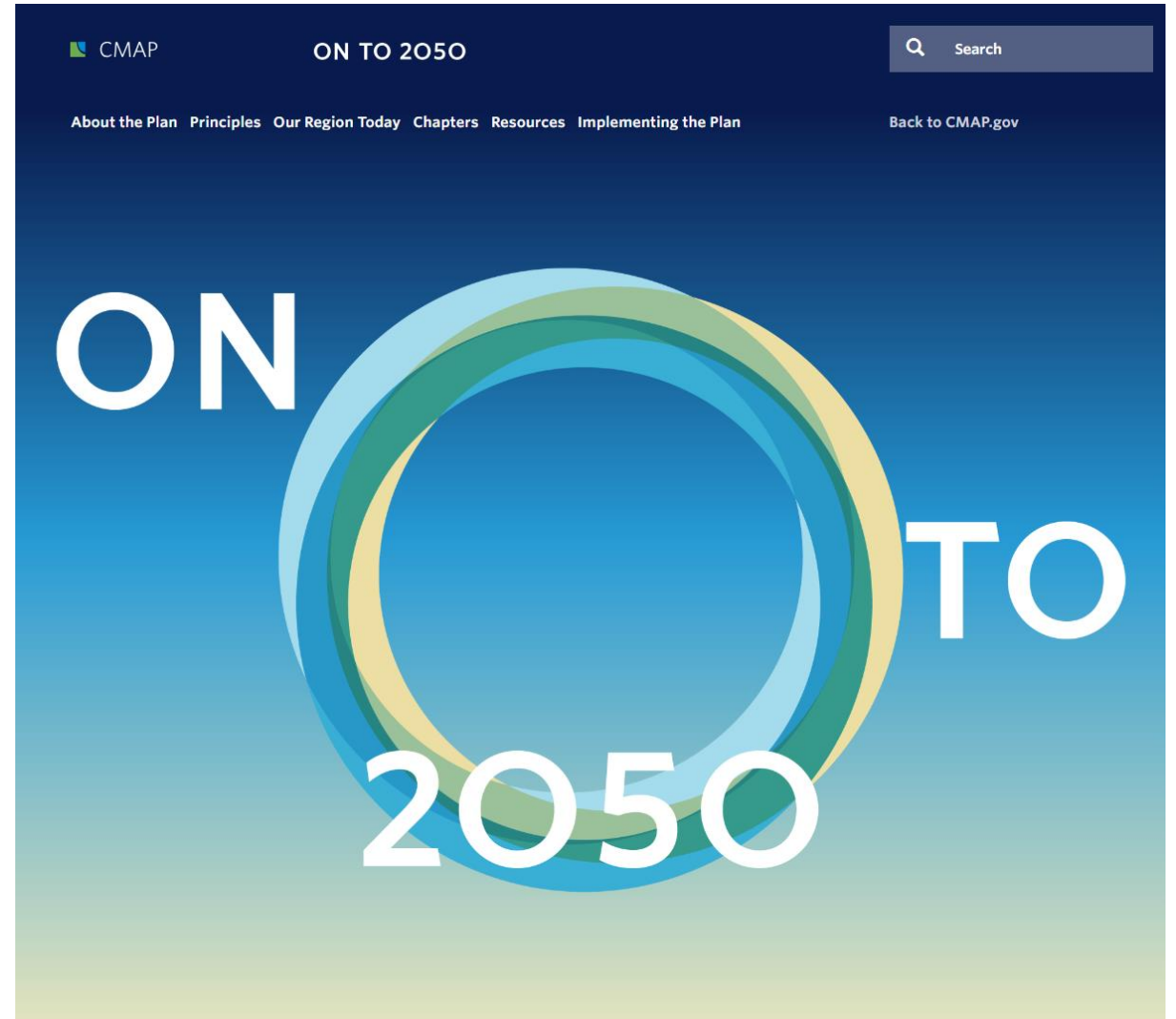
# Intro to CMAP

Regional planning agency

Land use and  
transportation planning

ON TO 2050

Local Technical Assistance



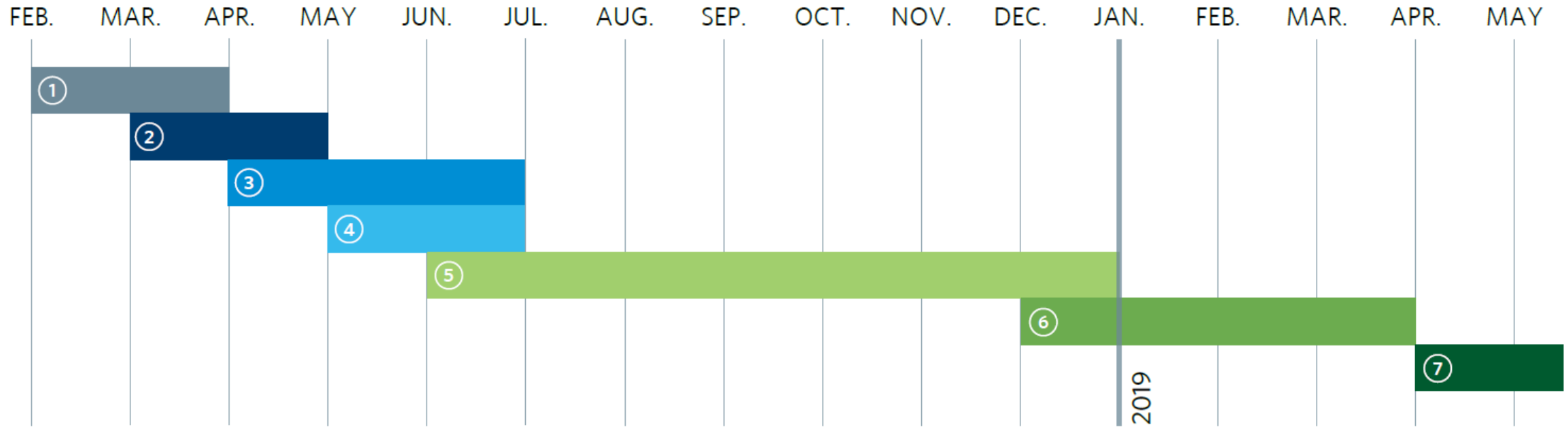
# Project background and goals

2017 LTA call for projects

- 1) Conduct existing conditions analysis
- 2) Recommend next steps for the City
- 3) Provide ongoing support



# A planning priorities report for Sandwich



1. Project initiation

2. Previous plan review

3. Existing conditions analysis

4. Stakeholder interviews

5. Preparation of draft report

6. Review of draft report

7. Completion/adoption



# Other takeaways

Sandwich Fair is a key part of the community's identity

Residents value downtown businesses

The community is aging and resident's needs are changing

# Existing conditions

Population: 7,491 (2016)

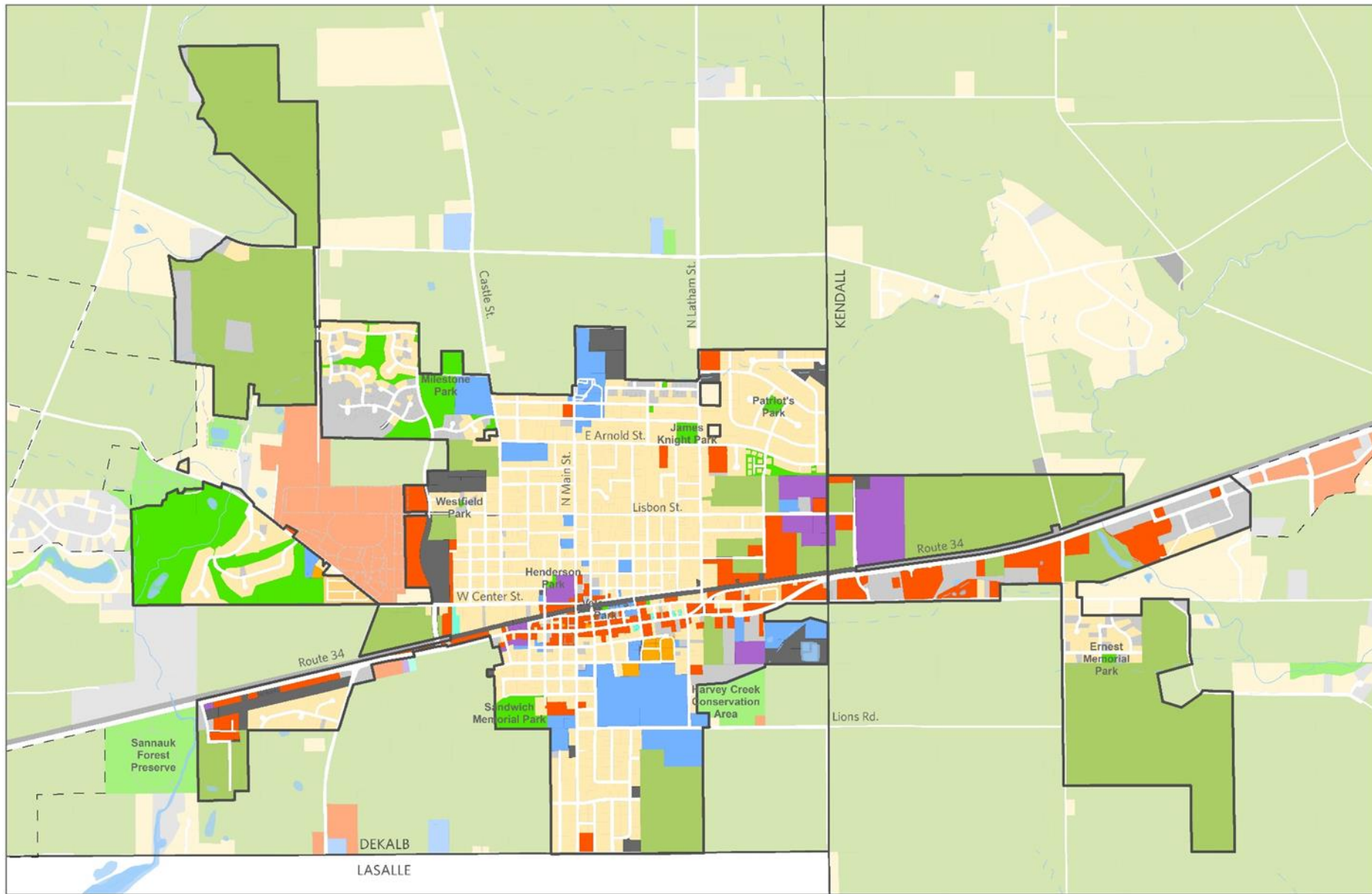
Median age: 36

Median HH income: \$58,636

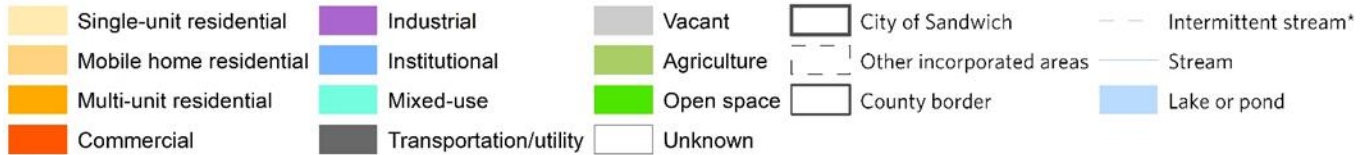
Total jobs: 3,267 (2015)

- Healthcare
- Manufacturing
- Retail

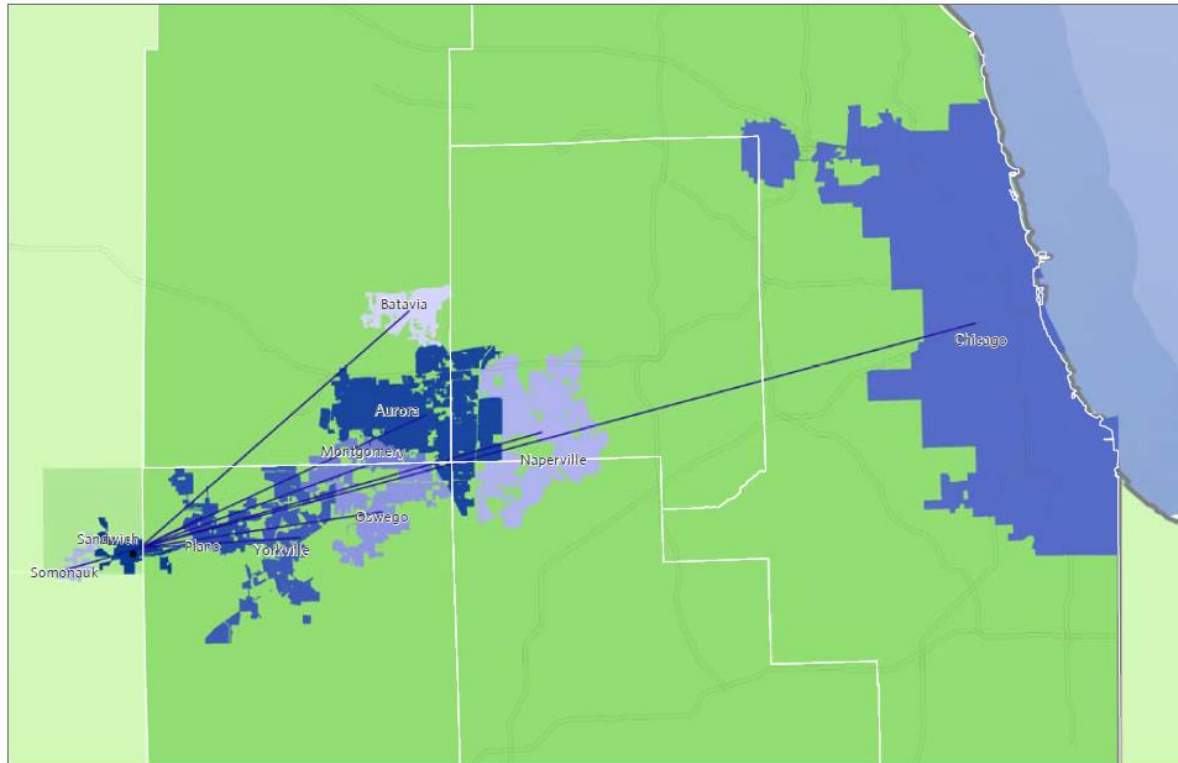




Land use in Sandwich



# Where Sandwich residents work

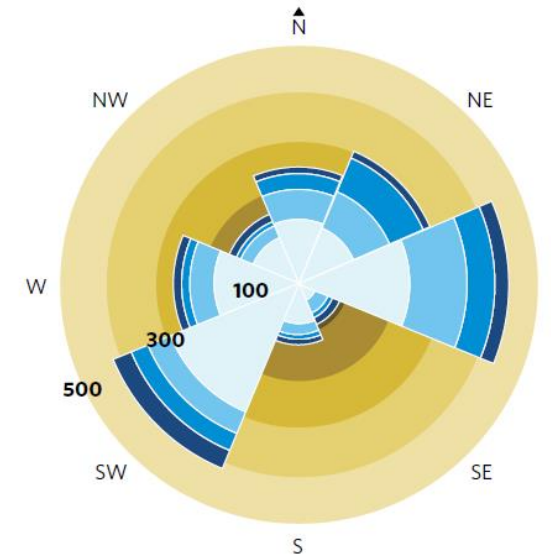


Where Sandwich workers live

Sandwich: 481 jobs	Yorkville: 143 jobs	Oswego: 64 jobs
Aurora: 312 jobs	Chicago: 99 jobs	Naperville: 61 jobs
Plano: 159 jobs	Montgomery: 95 jobs	Batavia: 59 jobs
Other: 1,733 jobs		

Source: Longitudinal Employer-Household Dynamics, U.S. Census Bureau, 2015.

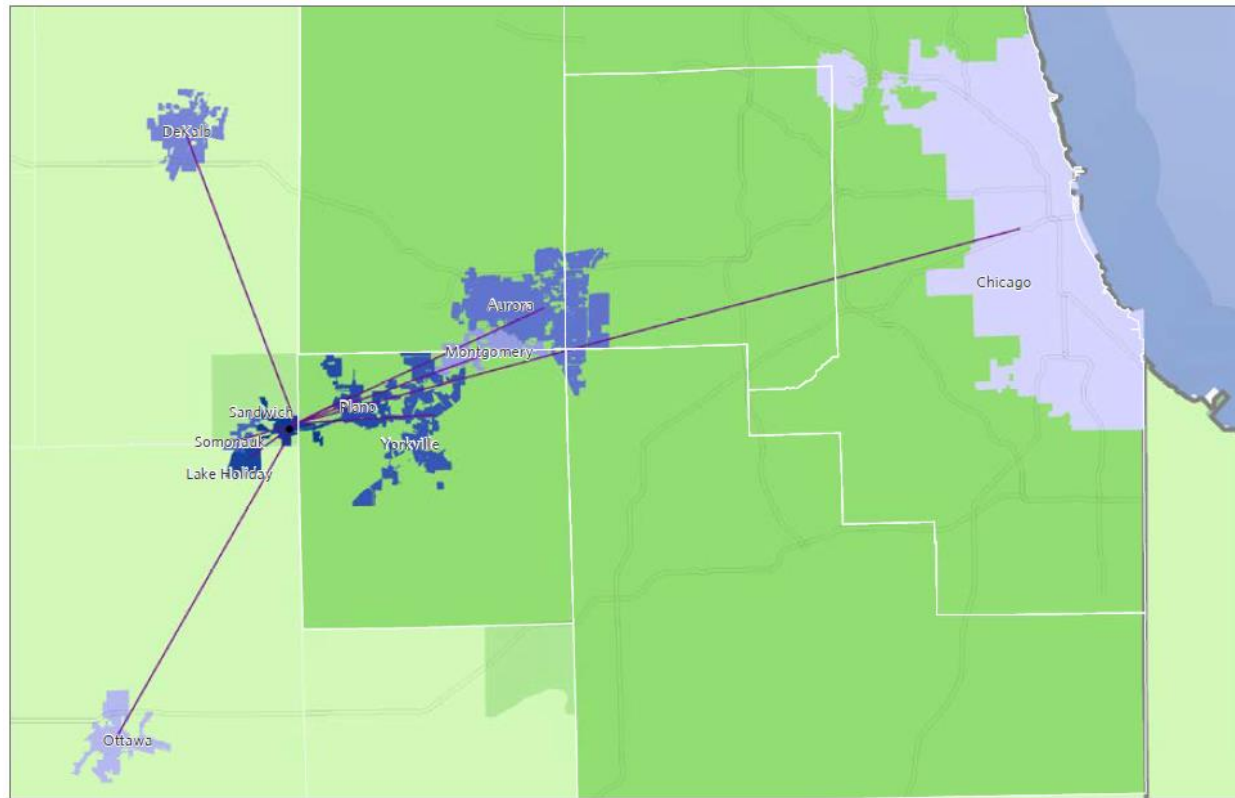
- Less than 10 miles
- 10 to 24 miles
- 25 to 50 miles
- Greater than 50 miles



	Count	Share
Total Primary Jobs	2,064	100.0%
Less than 10 miles	1,150	57.8%
10 to 24 miles	461	22.3%
25 to 50 miles	255	12.4%
Greater than 50 miles	155	7.5%

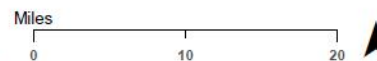
Source: 2015 American Community Survey, U.S. Census Bureau.

# Where Sandwich workers live



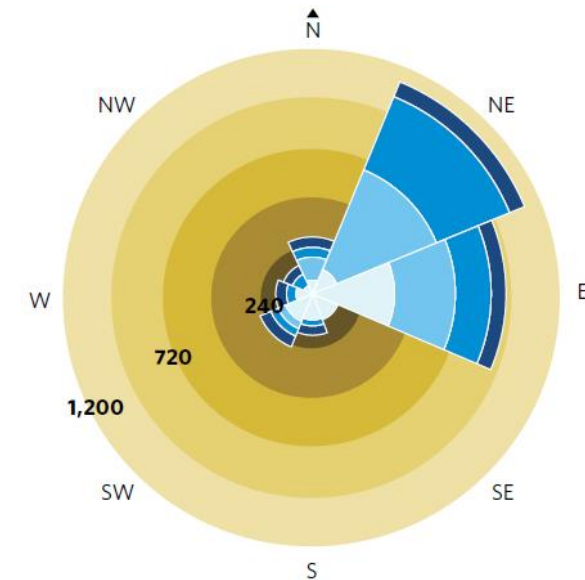
Where Sandwich residents work

Sandwich: 481 jobs	Yorkville: 64 jobs	DeKalb: 37 jobs	Chicago: 25 jobs
Lake Holiday: 200 jobs	Somonauk: 56 jobs	Montgomery: 36 jobs	Other: 958 jobs
Plano: 140 jobs	Aurora: 40 jobs	Ottawa: 27 jobs	



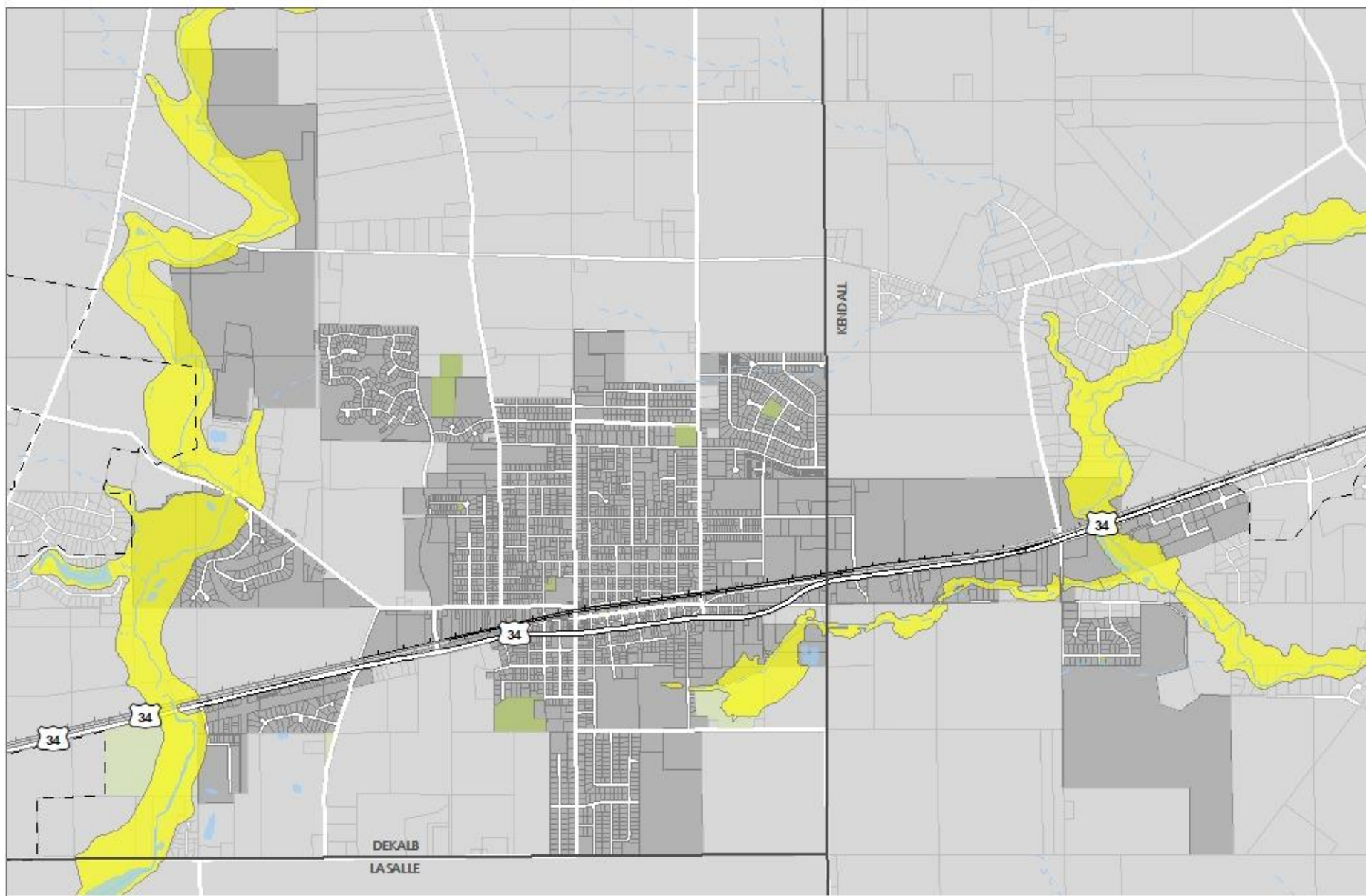
Source: Longitudinal Employer-Household Dynamics, U.S. Census Bureau, 2015.

- Less than 10 miles
- 10 to 24 miles
- 25 to 50 miles
- Greater than 50 miles



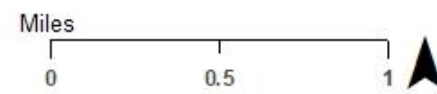
	Count	Share
Total Primary Jobs	3,267	100.0%
Less than 10 miles	1,081	33.1%
10 to 24 miles	1,035	31.7%
25 to 50 miles	762	23.3%
Greater than 50 miles	389	11.9%

Source: 2015 American Community Survey, U.S. Census Bureau.



**Sandwich floodplains**

- |   |   |  |   |
|---|---|--|---|
|  Floodway            |  City of Sandwich          |  Railroad   |  Intermittent stream |
|  100-year floodplain |  Other Incorporated Areas |  Major Road |  Stream              |
|  500-year floodplain |  County Boarder            |  Open space |  Lake or pond        |





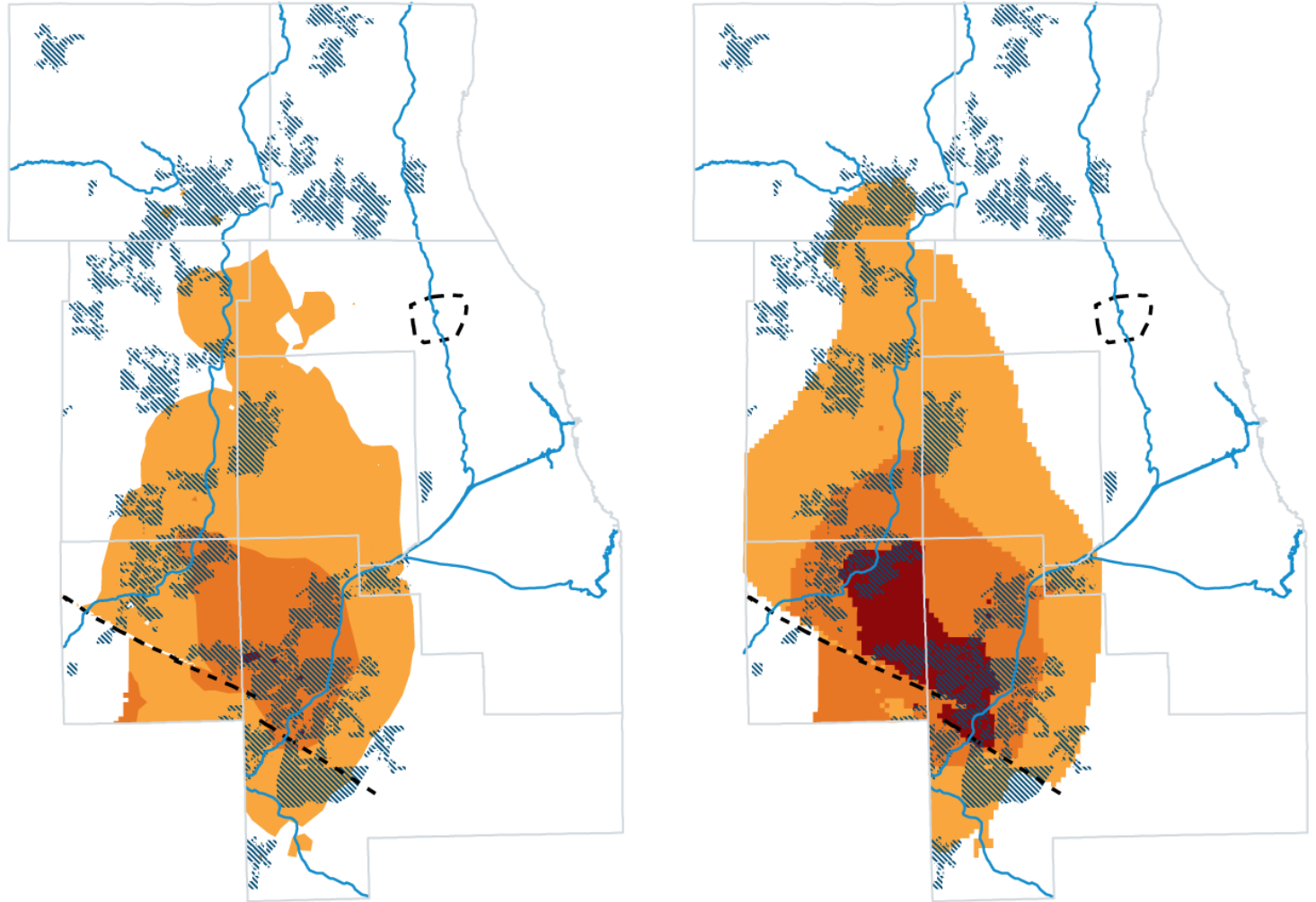
# Water supply

## Observed and projected desaturation of the St. Peter aquifer, 2014 and 2050

- Complete desaturation
- Partial desaturation (non-pumping)
- Partial desaturation (pumping)
- ▨ Sandstone dependent community
- Bedrock fault
- River

Note: "Pumping" refers to the condition of an aquifer immediately following a withdraw; "non-pumping" refers to the resting state of an aquifer. Areas experiencing non-pumping partial desaturation have a high risk of progressing to complete desaturation.

Source: Illinois State Water Survey, 2014.



# Recommendations

Create a new comprehensive plan

Improve budgeting practices and adopt a CIP

Conduct a Quiet Zone feasibility study

# What is a comprehensive plan?

Establishes a long-term vision for the community

- Existing conditions research
- Public outreach
- Builds consensus around a shared vision
- Sets goals and recommends actions
- Framework for future decisions



# Land use and development



**Future character of community**

**Fiscal impact of development**

**Development and conservation areas**

# Natural resources



Stormwater management

Farmland and open space preservation

Long-term water supply

# Transportation

Internal and external connections

Walkability and accessibility

Quality of life

# Governance and capacity



Shared services

Coordinated investments

Impacts of development

# Other topics

BNSF expansion

Historic preservation

Lake Holiday

# Additional recommendations

Budgeting training and CIP development

BNSF Quiet Zone feasibility study

# Next steps

Pursue funding for a comprehensive plan

- Integrate PPR into proposal and final plan

Budgeting/financial planning workshop or training

Quiet Zone study



[www.cmap.illinois.gov](http://www.cmap.illinois.gov)

**Jared Patton, AICP**  
[jpatton@cmap.illinois.gov](mailto:jpatton@cmap.illinois.gov)

**Tony Manno**  
[tmanno@cmap.illinois.gov](mailto:tmanno@cmap.illinois.gov)