

# Stormwater management projects in Cook County

Environment and Natural Resources  
Working Committee  
November 1, 2018

# Agenda

**Goal**

**Completed LTA projects**

**Approach**

**Current work**

# Goal

Integrate stormwater management and flooding solutions into future land use and transportation plans.

- Develop an approach
- Integrate into LTA plans

## Grants

MacArthur Foundation

Cook County CDBG-Disaster Recovery

## Technical assistance

Conservation Design Forum

Geosyntec Consultants

Hey and Associates

Christopher B. Burke Engineering

Michael Baker International

Strand Associates

# Completed Projects

- South Holland Comprehensive Plan
- Franklin Park Comprehensive Plan
- Richton Park Stormwater Plan
- Brookfield Comprehensive Plan
- Berwyn Stormwater Plan
- Midlothian 147th Street Corridor Study Stormwater Plan
- Cook County Unincorporated Area Plan
- Des Plaines Comprehensive Plan

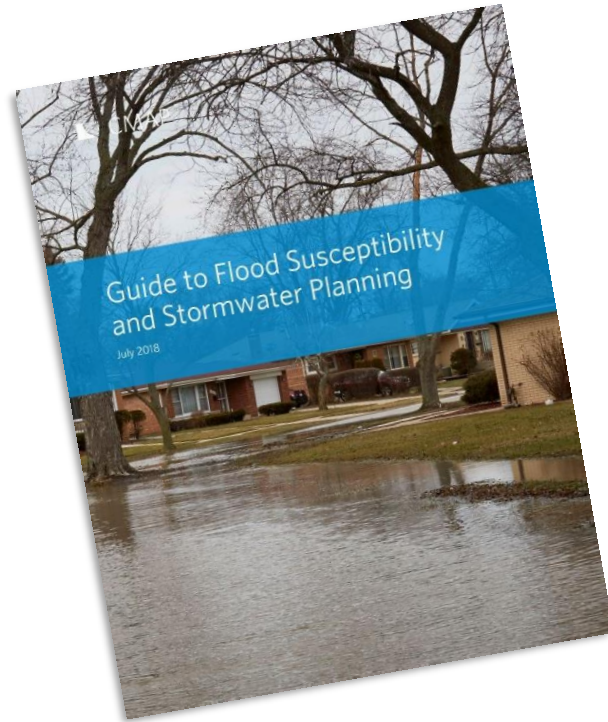
# Approach

**Assessment:** Include stormwater and flooding conditions in existing conditions analysis

**Prioritize:** Prioritize and assess problem areas to focus recommendations

**Plan:** Explore solutions, particularly green infrastructure, and incorporate into land use and transportation decisions

# Guide to Flood Susceptibility and Stormwater Planning



## Guide

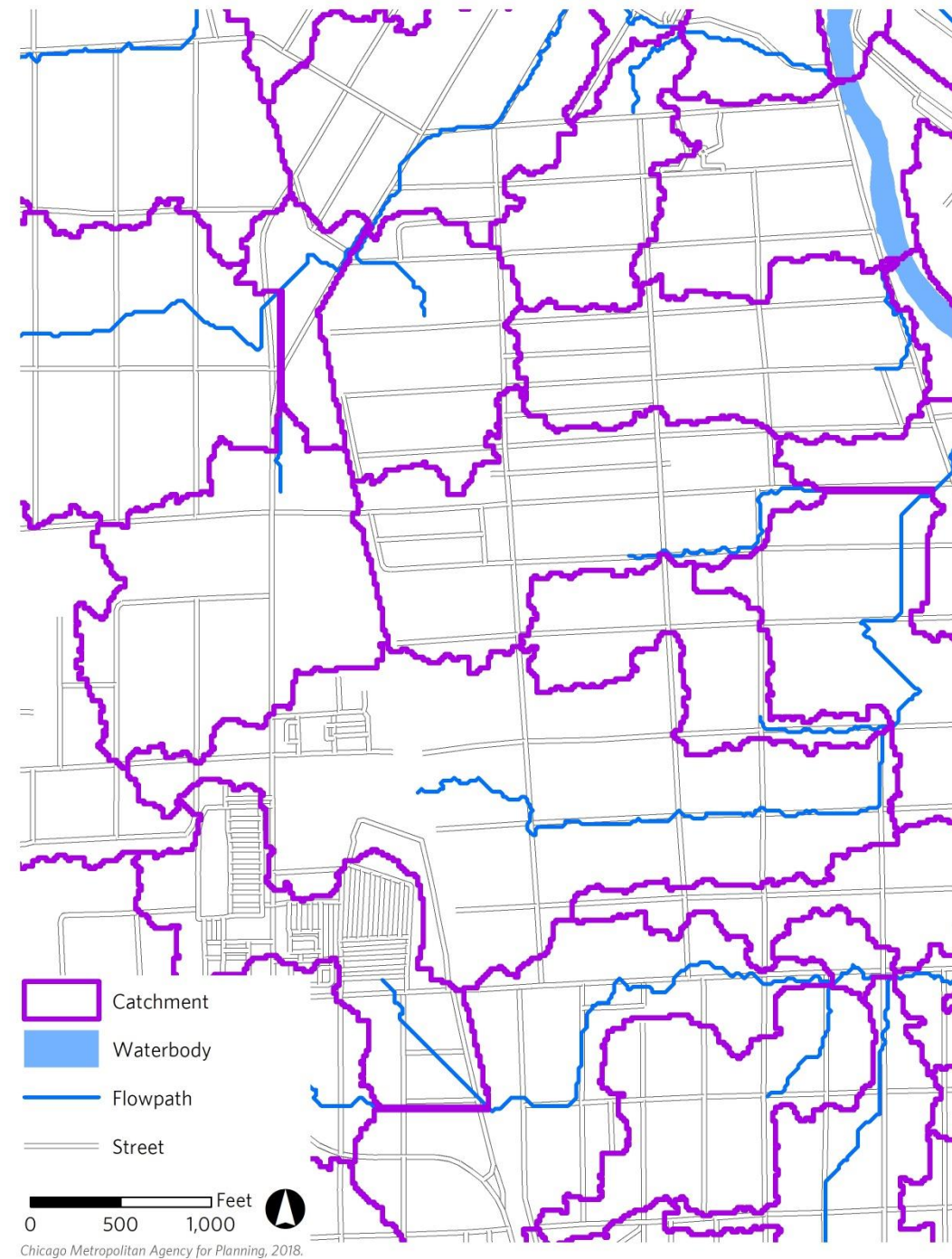
- How to interpret the FSI and its limitations.
- Steps to integrate stormwater issues into local planning processes.

## Download guide and data:

[www.cmap.illinois.gov/programs/water/stormwater](http://www.cmap.illinois.gov/programs/water/stormwater)

# Assessment

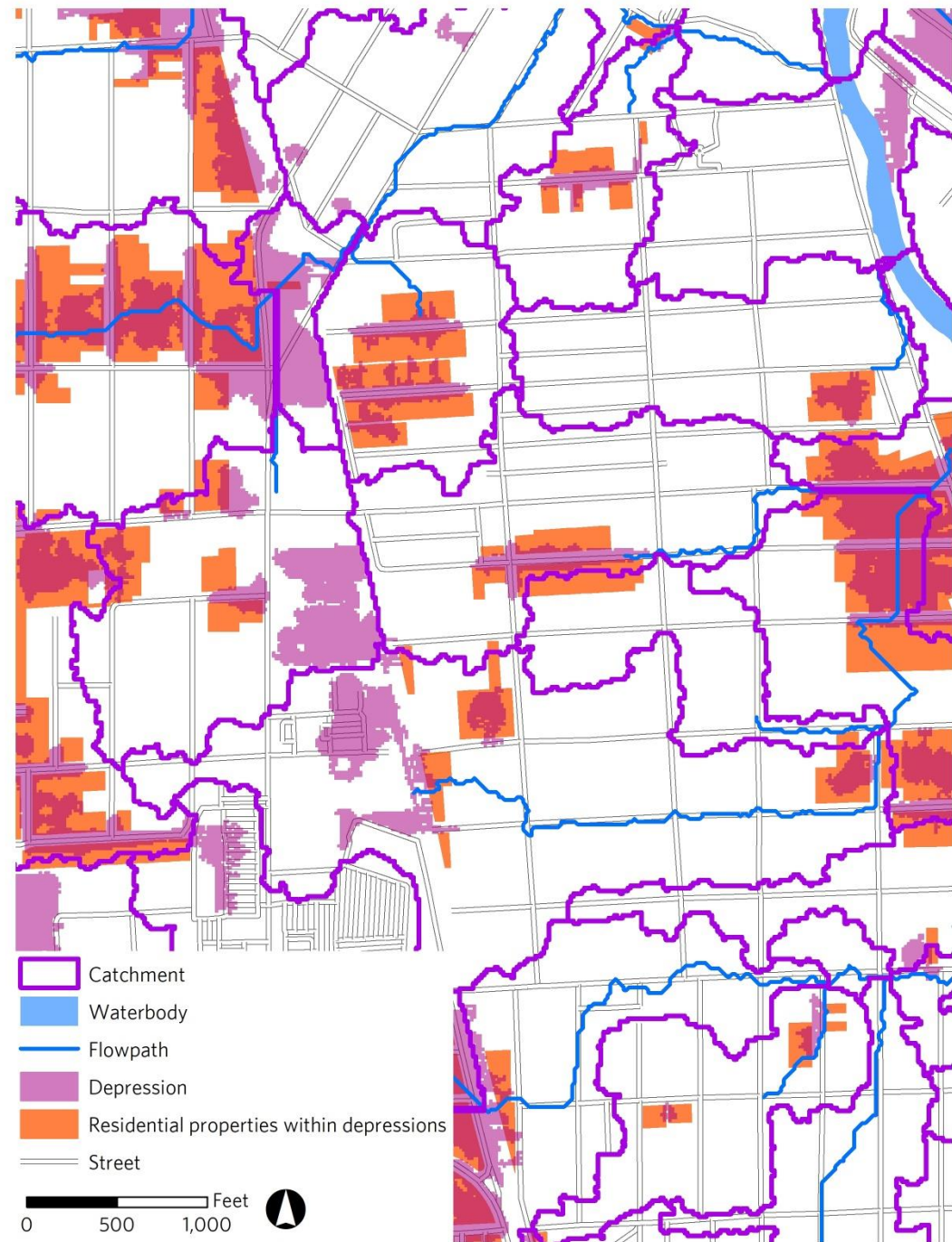
- Catchments and flowpaths





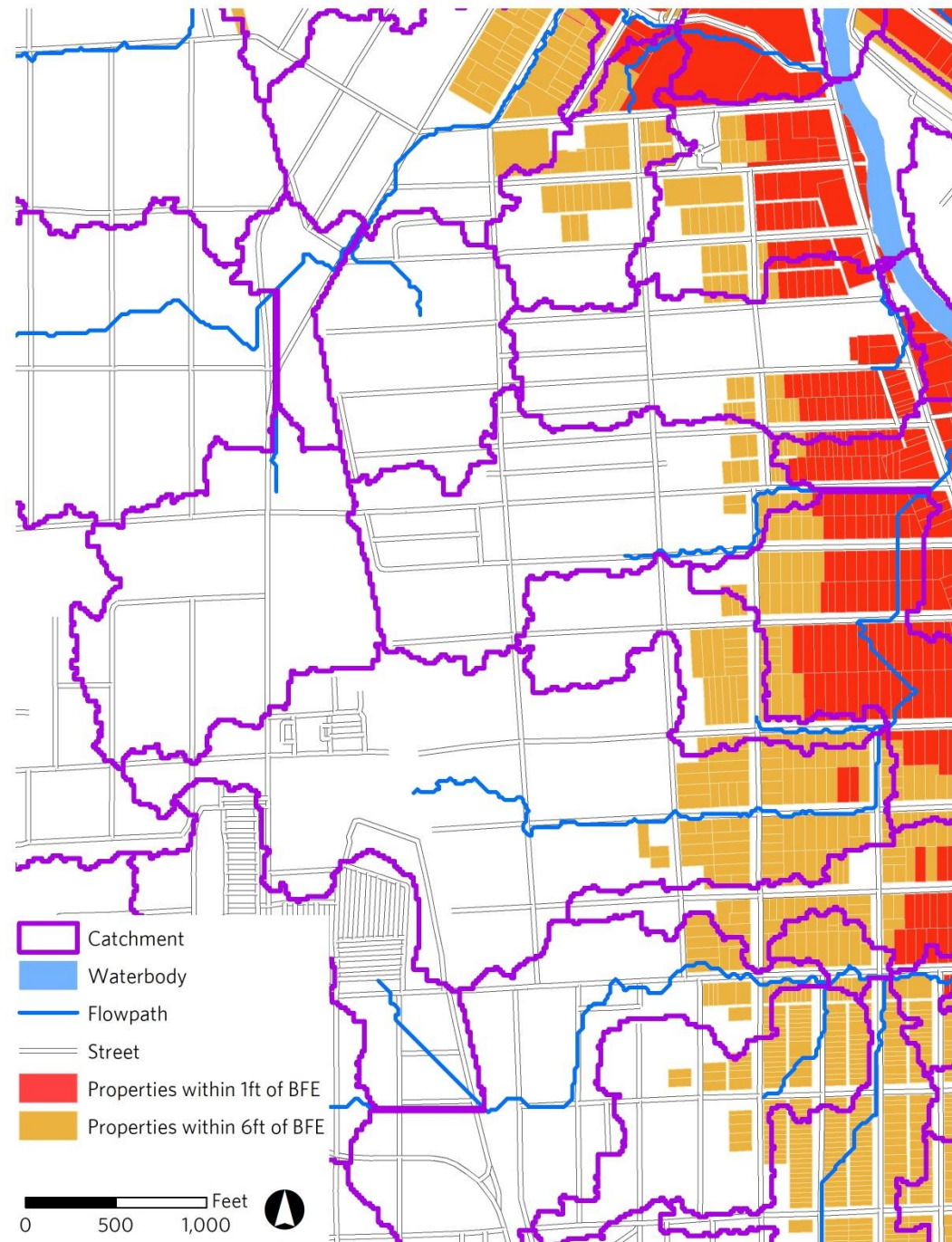
# Assessment

- Catchments and flowpaths
- Depressions



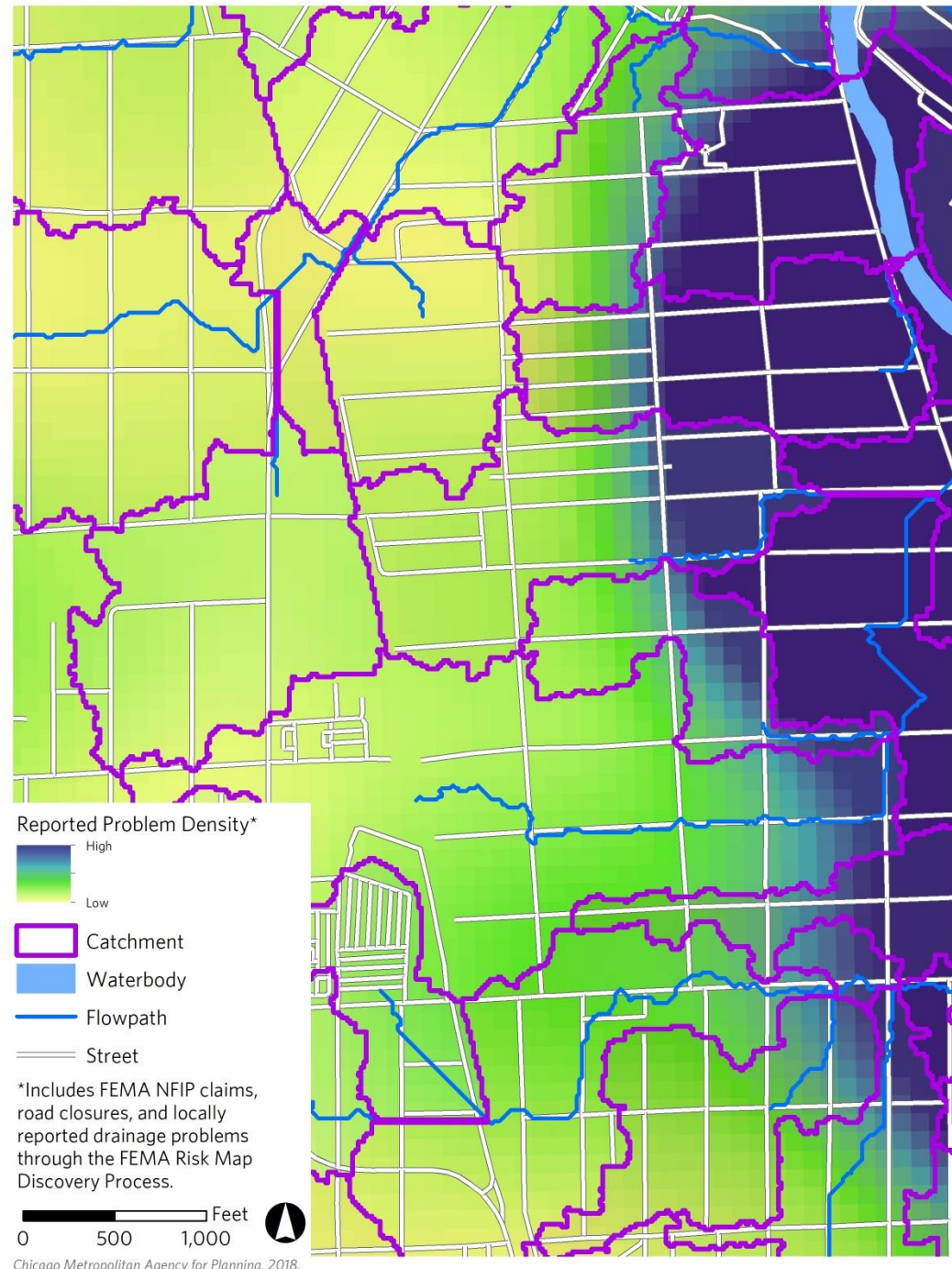
# Assessment

- Catchments and flowpaths
- Depressions
- Land near base flood elevation



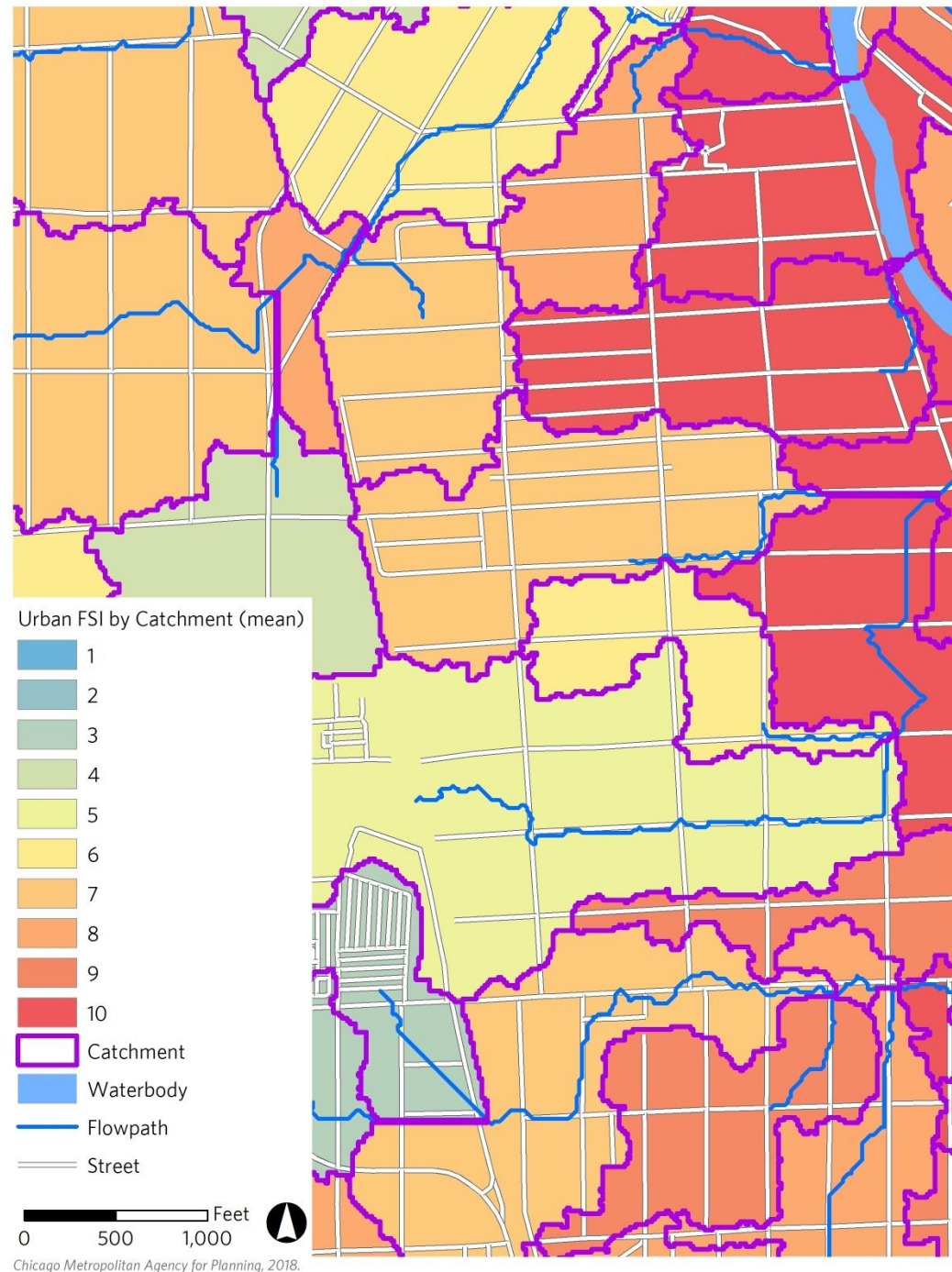
# Assessment

- Catchments and flowpaths
- Depressions
- Land near base flood elevation
- Past flooding locations



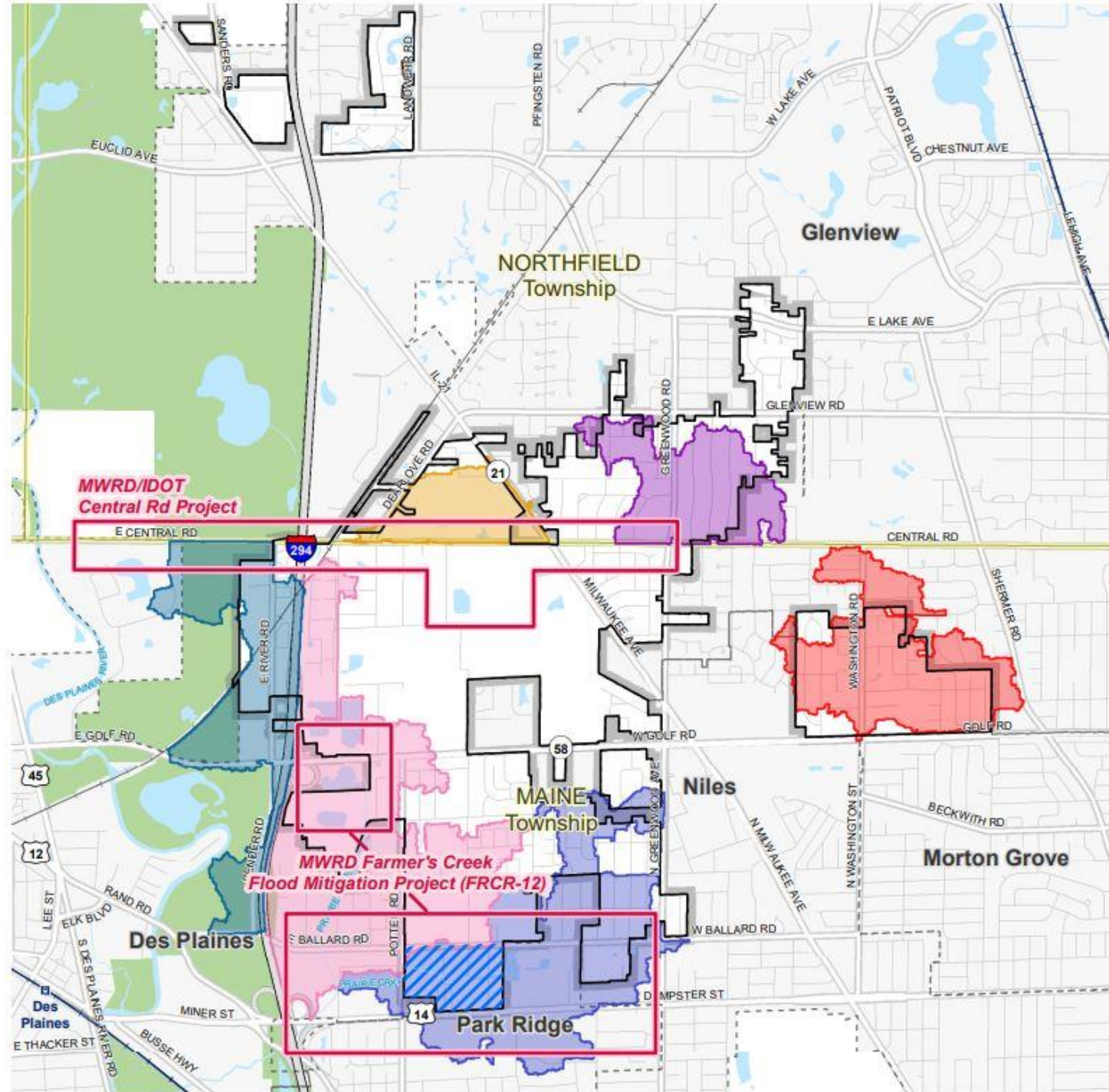
# Prioritize

## Flood Susceptibility Index by catchment



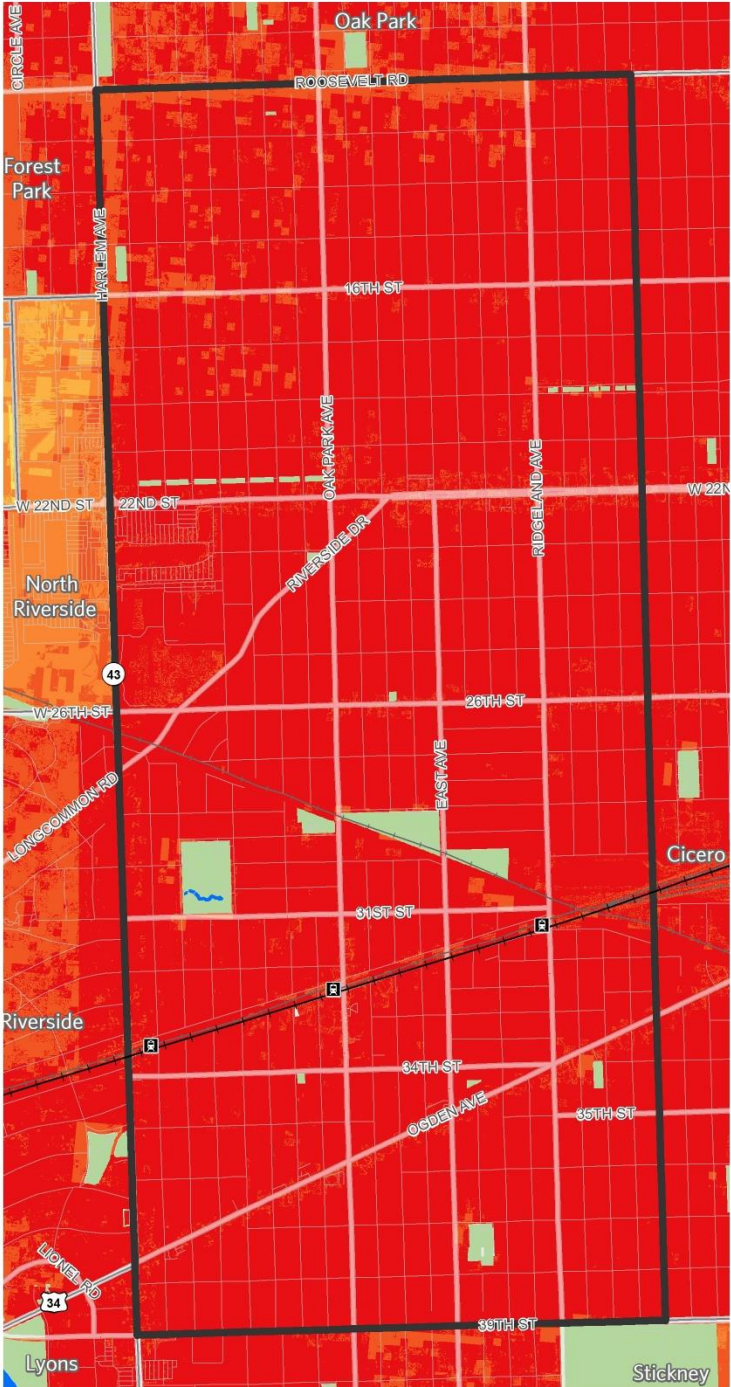
# Prioritize

Priority clusters identified  
in Cook County  
Unincorporated Area Plan



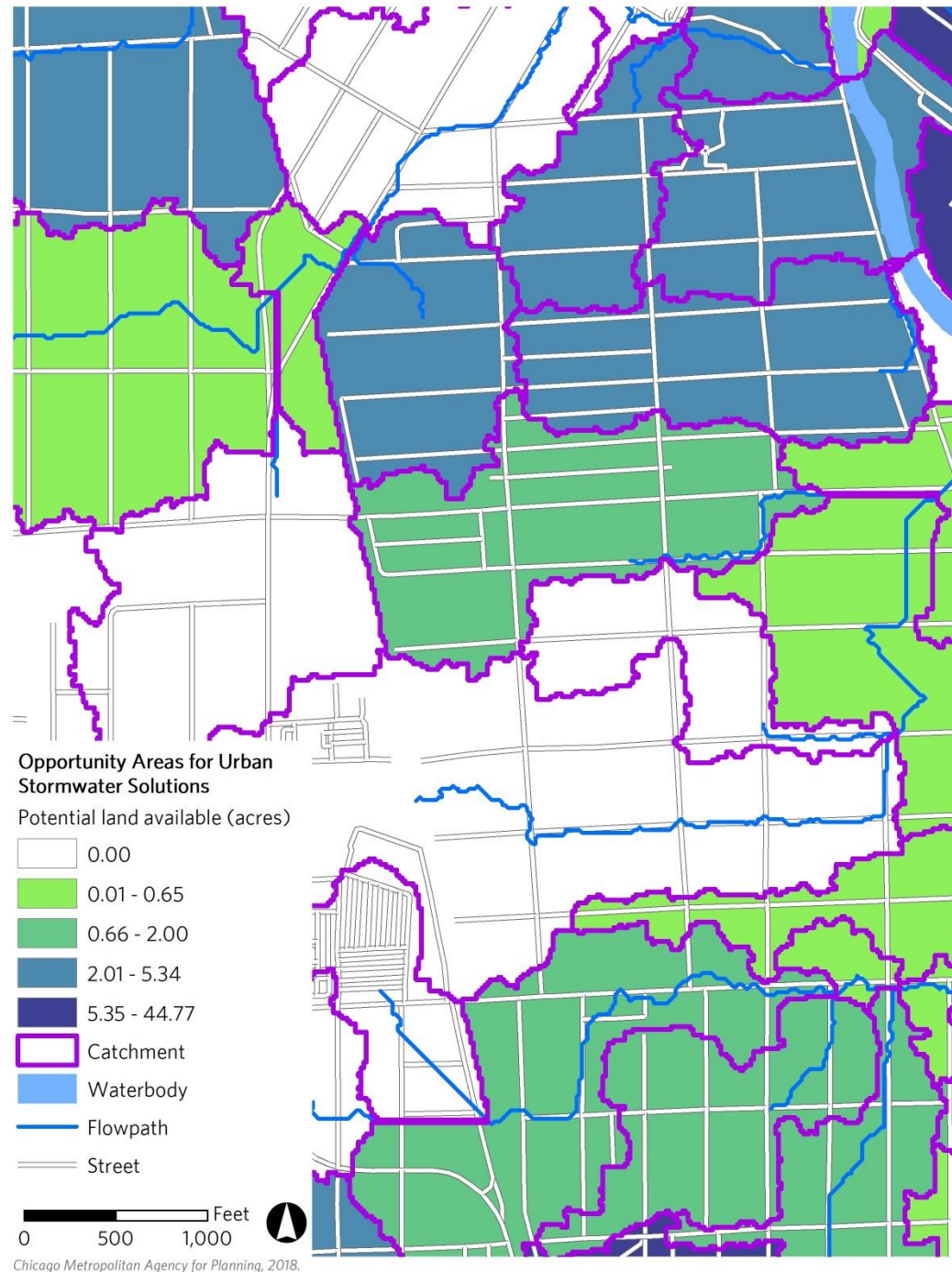
# Prioritize

Additional analysis needed



# Plan

## Opportunity analysis



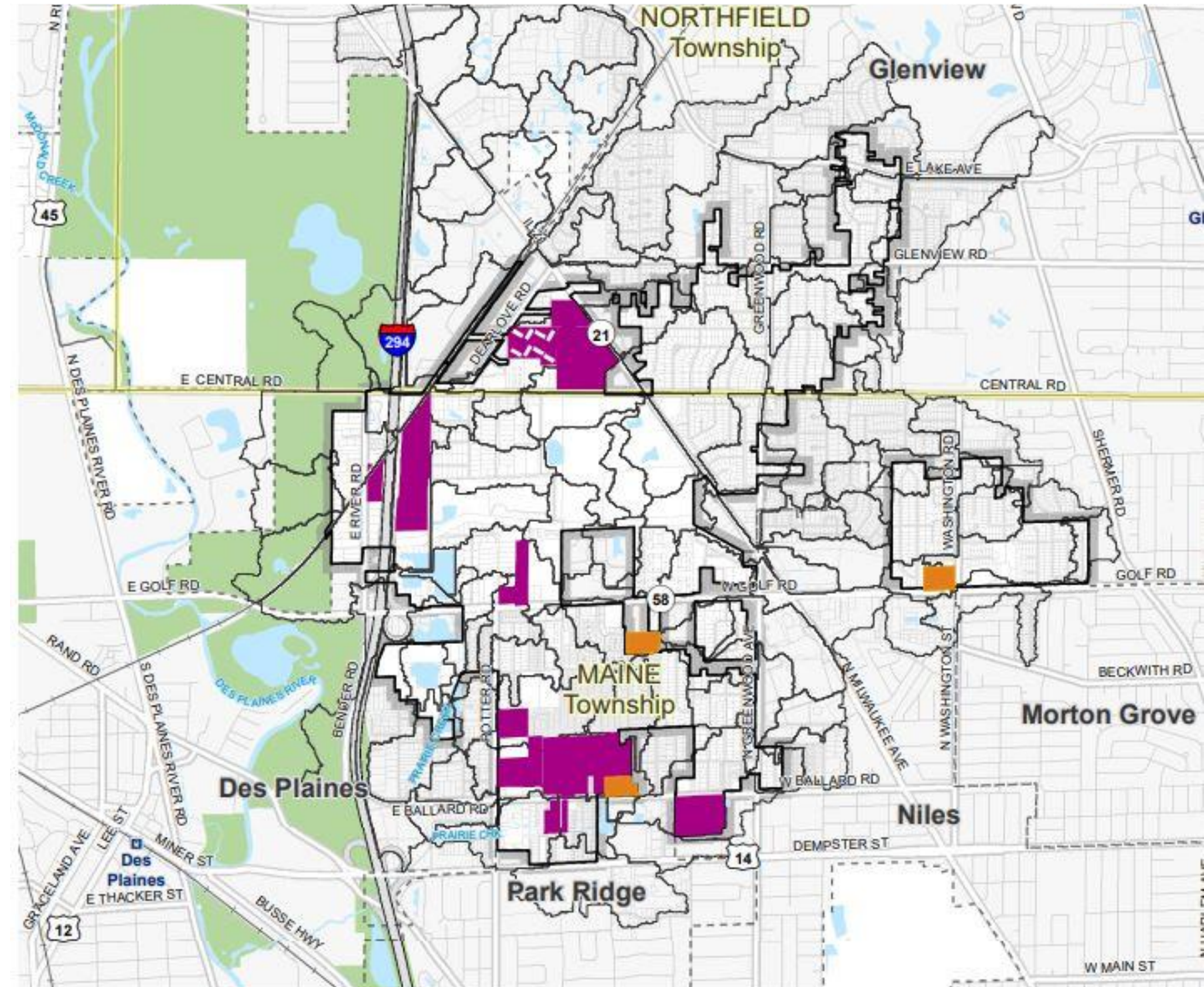
# Plan

Connect to other plan priorities

Opportunities in Cook County Unincorporated Area Plan

## Stormwater Management Opportunities

- School Properties
- Multifamily Housing Complexes





# Plan

Multi-family retrofit projects identified as community priorities

## Stormwater Management Opportunities

- School Properties
- Multifamily Housing Complexes

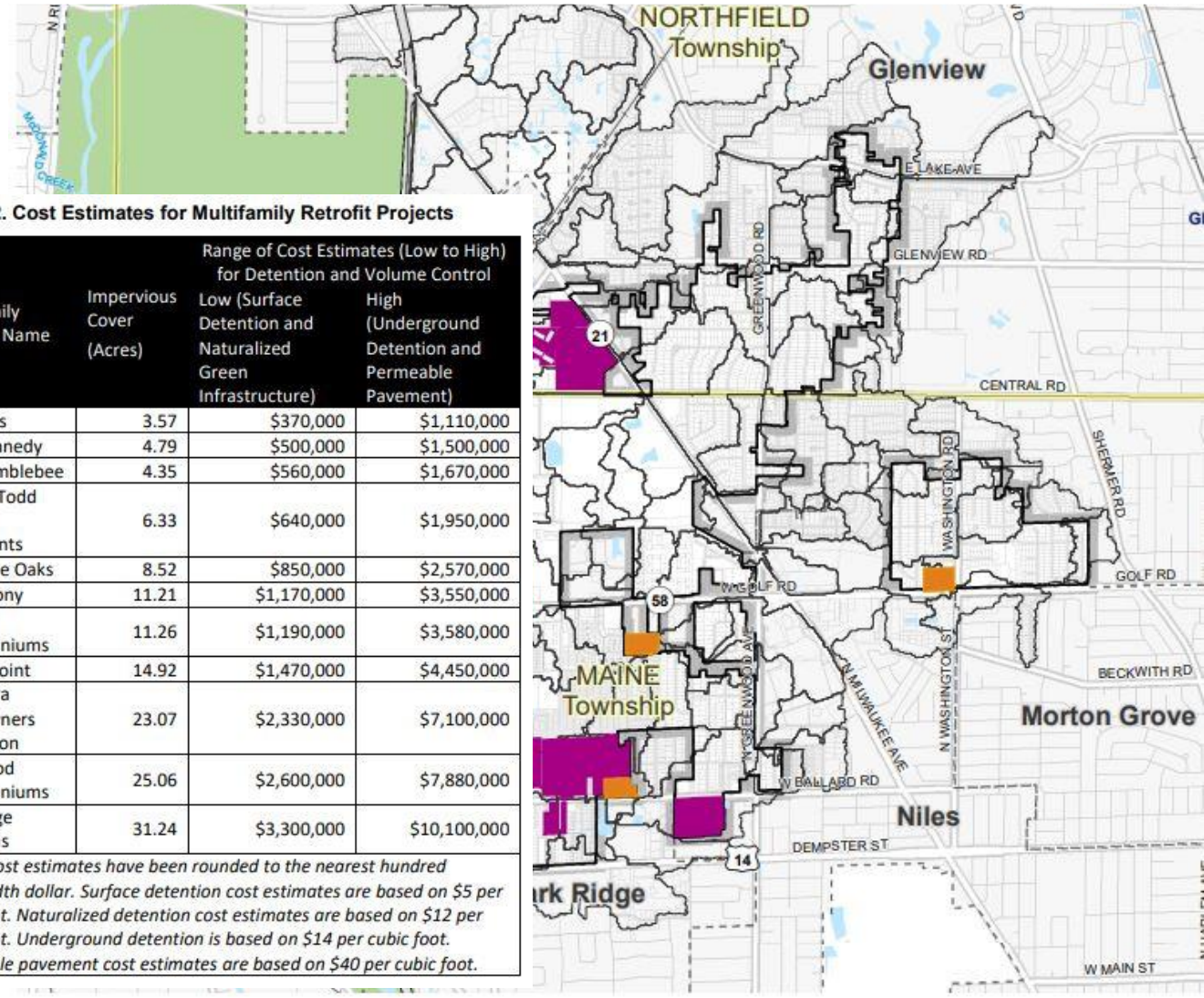


Table 3.2. Cost Estimates for Multifamily Retrofit Projects

Multifamily Complex Name	Impervious Cover (Acres)	Range of Cost Estimates (Low to High) for Detention and Volume Control	
		Low (Surface Detention and Naturalized Green Infrastructure)	High (Underground Detention and Permeable Pavement)
Oak Trails	3.57	\$370,000	\$1,110,000
8997 Kennedy	4.79	\$500,000	\$1,500,000
9204 Bumblebee	4.35	\$560,000	\$1,670,000
Michael Todd Terrace Apartments	6.33	\$640,000	\$1,950,000
Honeybee Oaks	8.52	\$850,000	\$2,570,000
Park Colony	11.21	\$1,170,000	\$3,550,000
Regency Condominiums	11.26	\$1,190,000	\$3,580,000
Ballard Point	14.92	\$1,470,000	\$4,450,000
Triumvera Homeowners Association	23.07	\$2,330,000	\$7,100,000
Crestwood Condominiums	25.06	\$2,600,000	\$7,880,000
Park Ridge Commons	31.24	\$3,300,000	\$10,100,000



Notes: Cost estimates have been rounded to the nearest hundred thousandth dollar. Surface detention cost estimates are based on \$5 per cubic foot. Naturalized detention cost estimates are based on \$12 per cubic foot. Underground detention is based on \$14 per cubic foot. Permeable pavement cost estimates are based on \$40 per cubic foot.

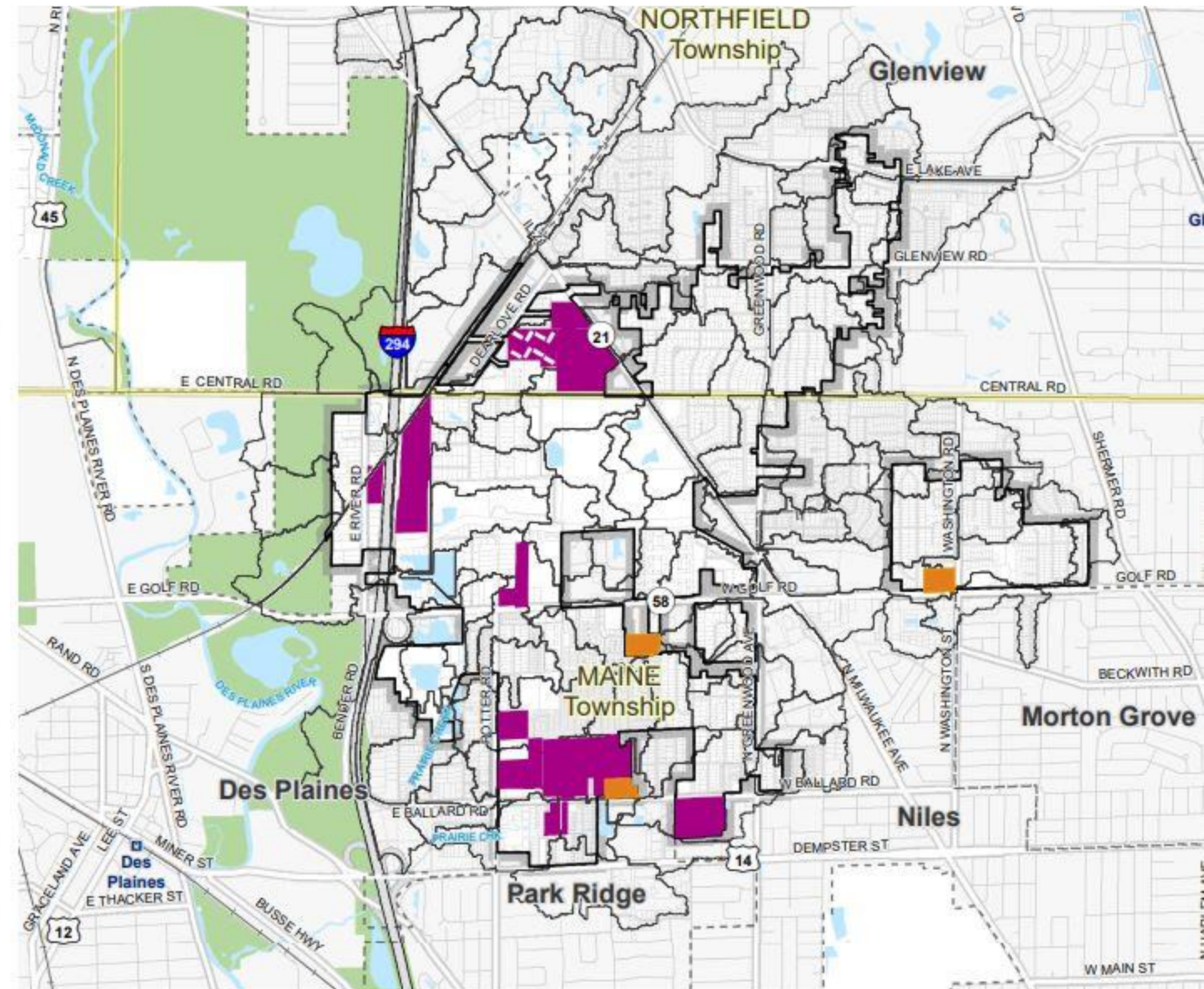
# Plan

## Connection to public properties



### Stormwater Management Opportunities

-  School Properties
-  Multifamily Housing Complexes



# Current projects

- Calumet Park Comprehensive Plan
- Sauk Village Comprehensive Plan
- Midlothian Stormwater Management Capital Plan
- Richton Park Stormwater Management Concept

# Questions

Nora Beck  
nbeck@cmap.illinois.gov