

### Riverview Bridge 312 RiverRun



Chicago's Emerging River Trail  
March 20, 2019

---

---

---

---

---

---

---

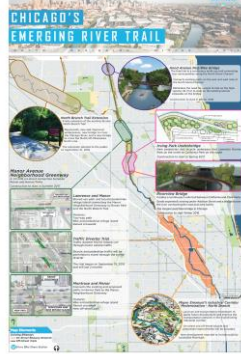
---

### City's goal to develop a continuous river trail system



CHICAGO RIVER CORRIDOR  
DEVELOPMENT PLAN

City of Chicago  
Richard M. Daley, Mayor  
Department of Planning and Development  
Chicago's 160th Anniversary  
2009



---

---

---

---

---

---

---

---

### 312 RiverRun – Filling the Gap

- 3 Parks
  - Horner, California, and Clark Park will now be connected and easily accessible
- 1 Trail
  - Belmont to Montrose
- 2 Miles
  - Nearly a 2 mile off street shared use path
- Provides access to the recreational opportunities including ice rinks, tennis courts, dirt bike jumps, baseball diamonds and the WMS Boathouse rowing facility
- Major step toward the goal of a continuous path along the entire riverfront.



---

---

---

---

---

---

---

---

### 312 RiverRun – Filling the Gap

- Irving Park Road Bridge and Multi-Use Path
- Riverview Bridge




---

---

---

---

---

---

---

---

### Riverview Bridge

North Branch River Trail at Addison Street between Rockwell and California



- Pedestrian and bicycle path and bridge along the North Branch of the Chicago River from Clark Park to California Park
- Connects existing North Branch Riverfront Trail segments and provides more than one mile of continuous trail along the North Branch of Chicago River
- The new trail segment will provide an underbridge crossing under Addison Street, enhancing user safety by eliminating the need to cross Addison on foot or on bike.

---

---

---

---

---

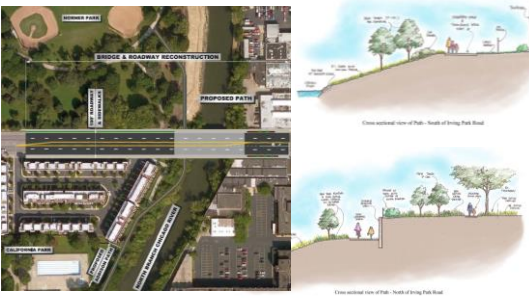
---

---

---

### Irving Park Road Bridge and Multi-Use Path

North Branch River Trail Underbridge Connection at Irving Park Road between Rockwell and California




---

---

---

---

---

---

---

---

### Manor Neighborhood Greenway

#### Project Location

- Horner Park Path Extension to Montrose
- Manor (Montrose to Lawrence)
- Lawrence (Manor to Ronan Park)
- Argyle (Ronan Park Path to North Shore Channel Trail)

#### Project Scope

- Low-stress connections between the Chicago River Trail segments ending in Horner Park and the southern termini of the North Shore Channel Trail
- New park path, improved ped/bike crossings at Montrose and Lawrence, traffic calming on Manor, minimal pavement markings and signage



---

---

---

---

---

---

---

---

---

---

### Lincoln Village Pedestrian and Bicycle Bridge



---

---

---

---

---

---

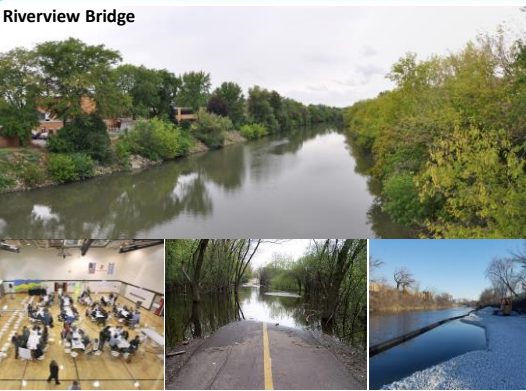
---

---

---

---

### Riverview Bridge



---

---

---

---

---

---

---

---

---

---

Stakeholders	Funding
<ul style="list-style-type: none"><li>47<sup>th</sup> Ward Community</li><li>33<sup>rd</sup> Ward Community</li><li>Trail Users</li><li>Advocacy Groups</li><li>City of Chicago</li><li>Chicago Park District</li><li>Illinois Department of Transportation</li><li>Federal Highway Authority</li><li>The Metropolitan Water Reclamation District</li><li>United States Army Corp of Engineers</li><li>Illinois Department of Natural Resources</li><li>Illinois Environmental Protection Agency</li><li>United States Coast Guard</li></ul>	<ul style="list-style-type: none"><li>Design – Open Space Impact Fee</li><li>Construction - \$13,674,000<ul style="list-style-type: none"><li>\$ 2,000,000 ITEP</li><li>\$5,888,000 TAP</li><li>\$3,051,200 STP</li><li>\$1,994,800 TIF Match</li><li>\$740,000 Open Space Impact</li></ul></li><li>Fee match</li></ul>

---

---

---

---

---

---

---

---

Regulatory
<p>Coordinating Agencies -</p> <ul style="list-style-type: none"><li>Chicago Park District</li><li>MWRD</li><li>United States Coast Guard</li><li>U.S. Army Corps of Engineers</li><li>IL-EPA</li><li>IDNR</li><li>IDOT</li><li>FHWA</li><li>North Cook County Soil &amp; Water Conservation District</li></ul> <p>Strategies to work with regulatory agencies -</p> <ul style="list-style-type: none"><li>Meet early and often</li><li>Know the regulations</li><li>Use experienced team</li><li>Allow sufficient time</li></ul>

---

---

---

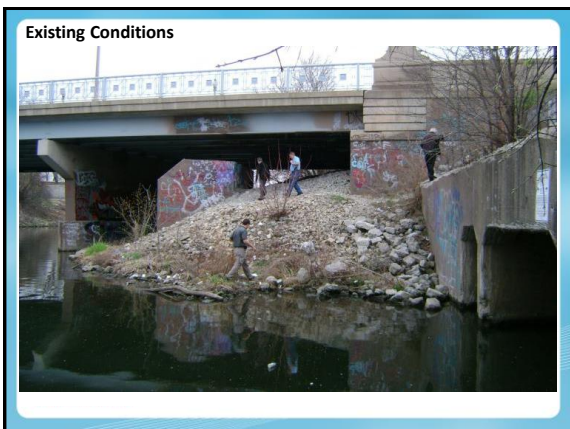
---

---

---

---

---



---

---

---

---

---

---

---

---

**Existing Conditions**



---

---

---

---

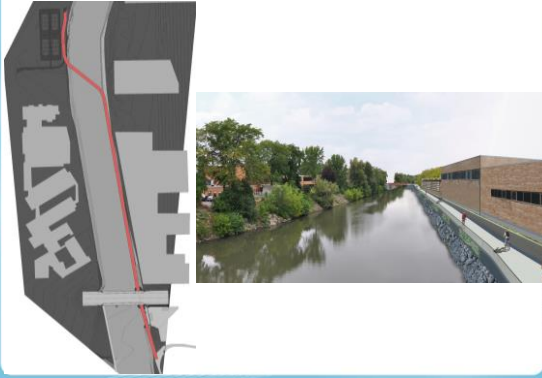
---

---

---

---

**Alternatives Analysis** Options 1 and 2



---

---

---

---

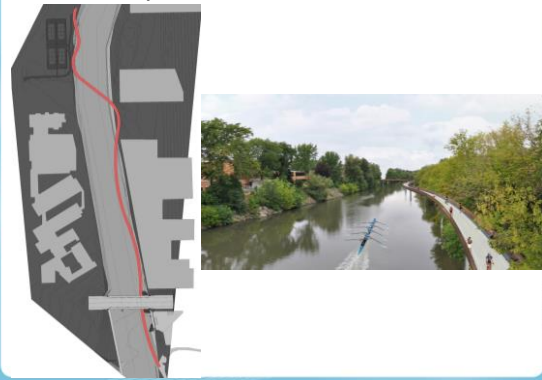
---

---

---

---

**Alternatives Analysis** Option 3



---

---

---

---

---

---

---

---



Results



---

---

---

---

---

---

---

---



---

---

---

---

---

---

---

---



---

---

---

---

---

---

---

---



---

---

---

---

---

---

---

---



---

---

---

---

---

---

---

---

**Thank you**

**Website**  
[www.chicagodot.org](http://www.chicagodot.org)

---

**Twitter**  
[@CDOTNews](https://twitter.com/CDOTNews)

---

**Facebook**  
[facebook.com/CDOTNews](https://facebook.com/CDOTNews)

Lubka Benak, Director of Livable Streets  
Division of Project Development, CDOT  
[Lubka.Benak@cityofchicago.org](mailto:Lubka.Benak@cityofchicago.org)  
312-742-2837

---

---

---

---

---

---

---

---