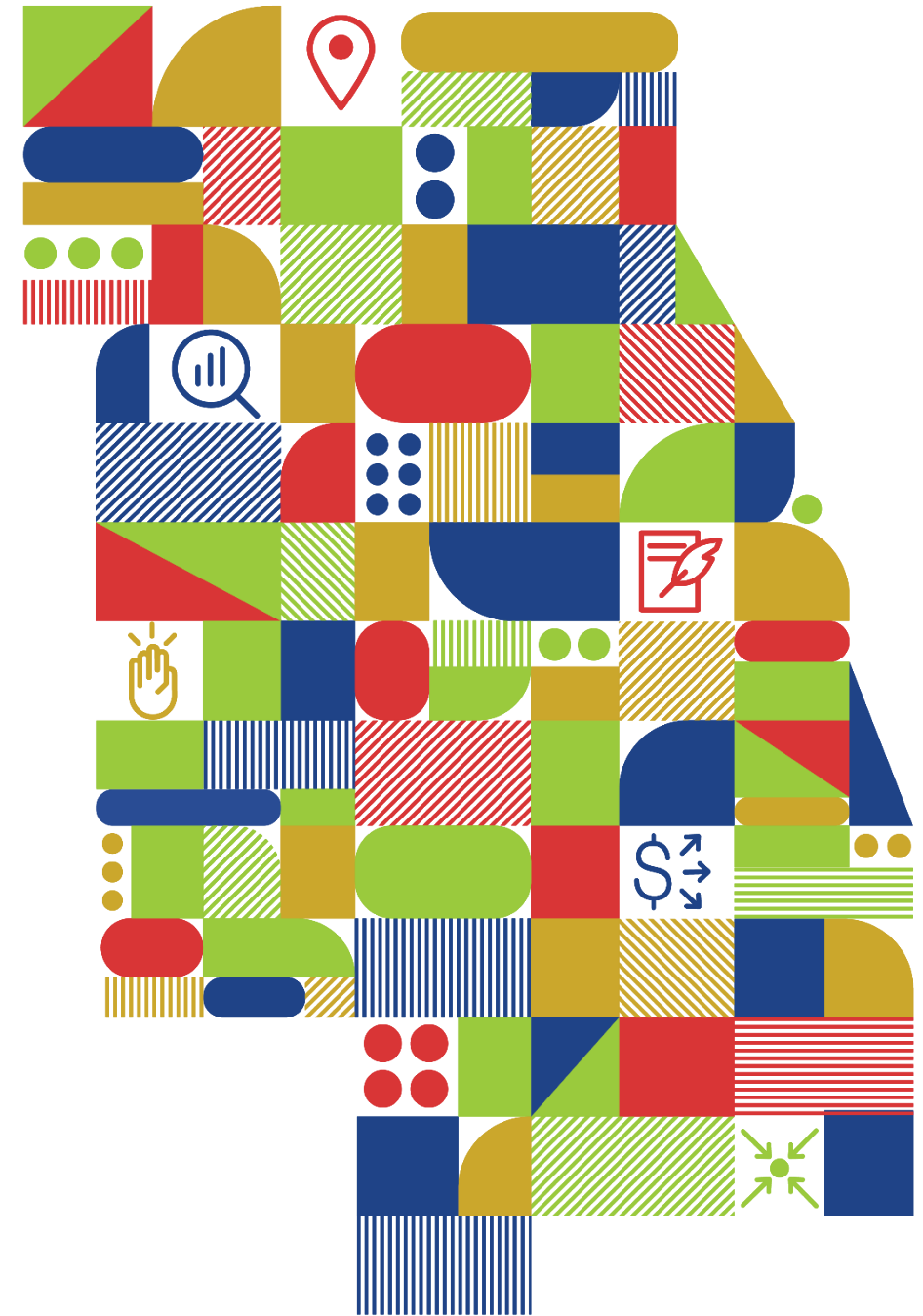




Equitable Engagement Program

Elizabeth Scott
Principal Policy Analyst

Ryan Thompto
Senior Policy Analyst



Project Background



Inequities in Planning

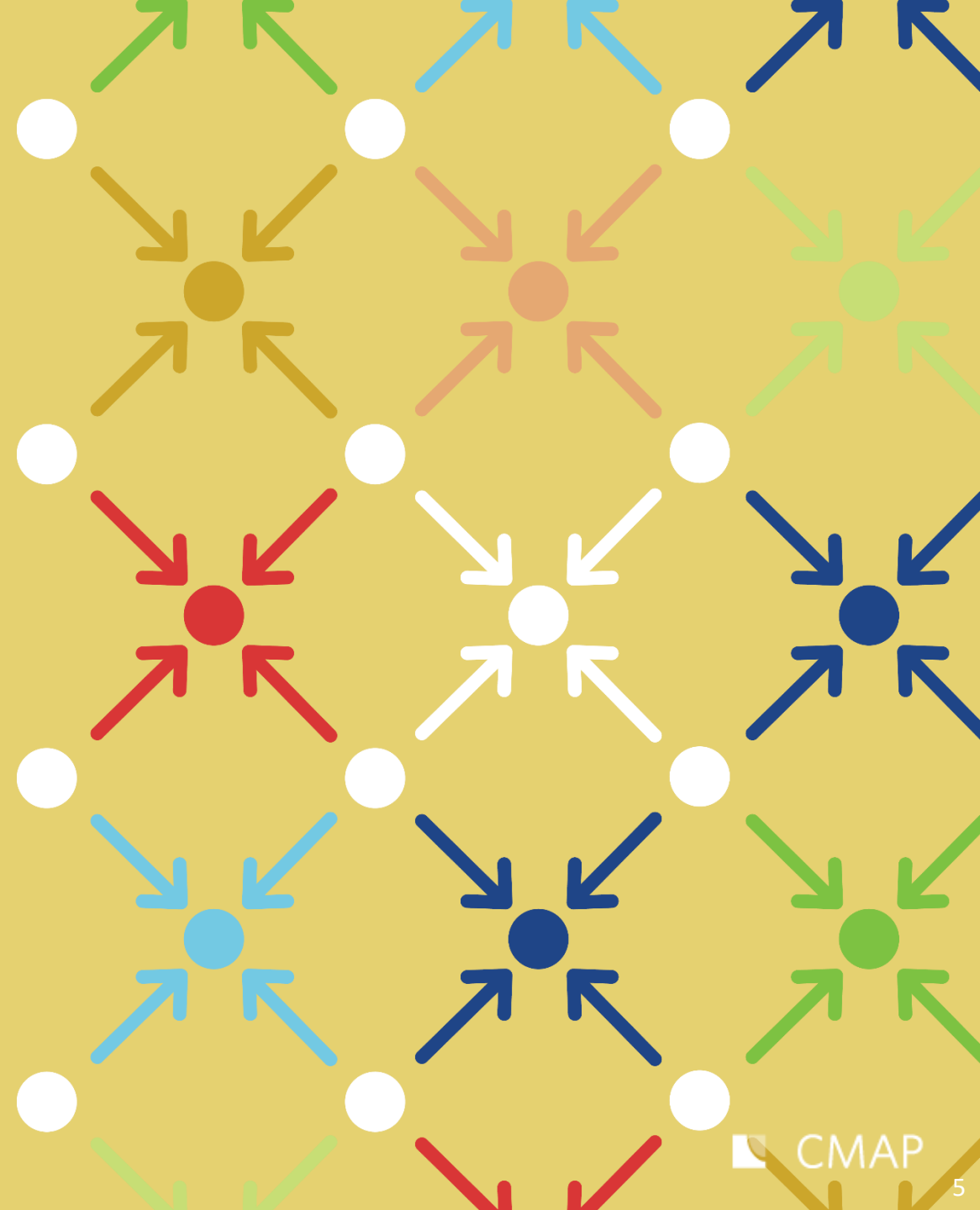
- Government has played a role in creating and perpetuating racial inequities
- Inequities exist across all indicators for individual and community success
- Inequities are sustained by historical legacies as well as modern-day structures and systems that repeat patterns of exclusion



Title VI and Environmental Justice Responsibilities

- Title VI of the Civil Rights Act of 1964
- Executive Order 12898 of 1994
- National Environmental Policy Act (NEPA)
- U.S. Department of Transportation Order 5610.2(a)
- Executive Order 13985 of 2021

Project Description



Equitable Engagement

CMAP is working to build stronger relationships with environmental justice communities and directly engage community members and organizations in CMAP's long-range planning and programming activities.

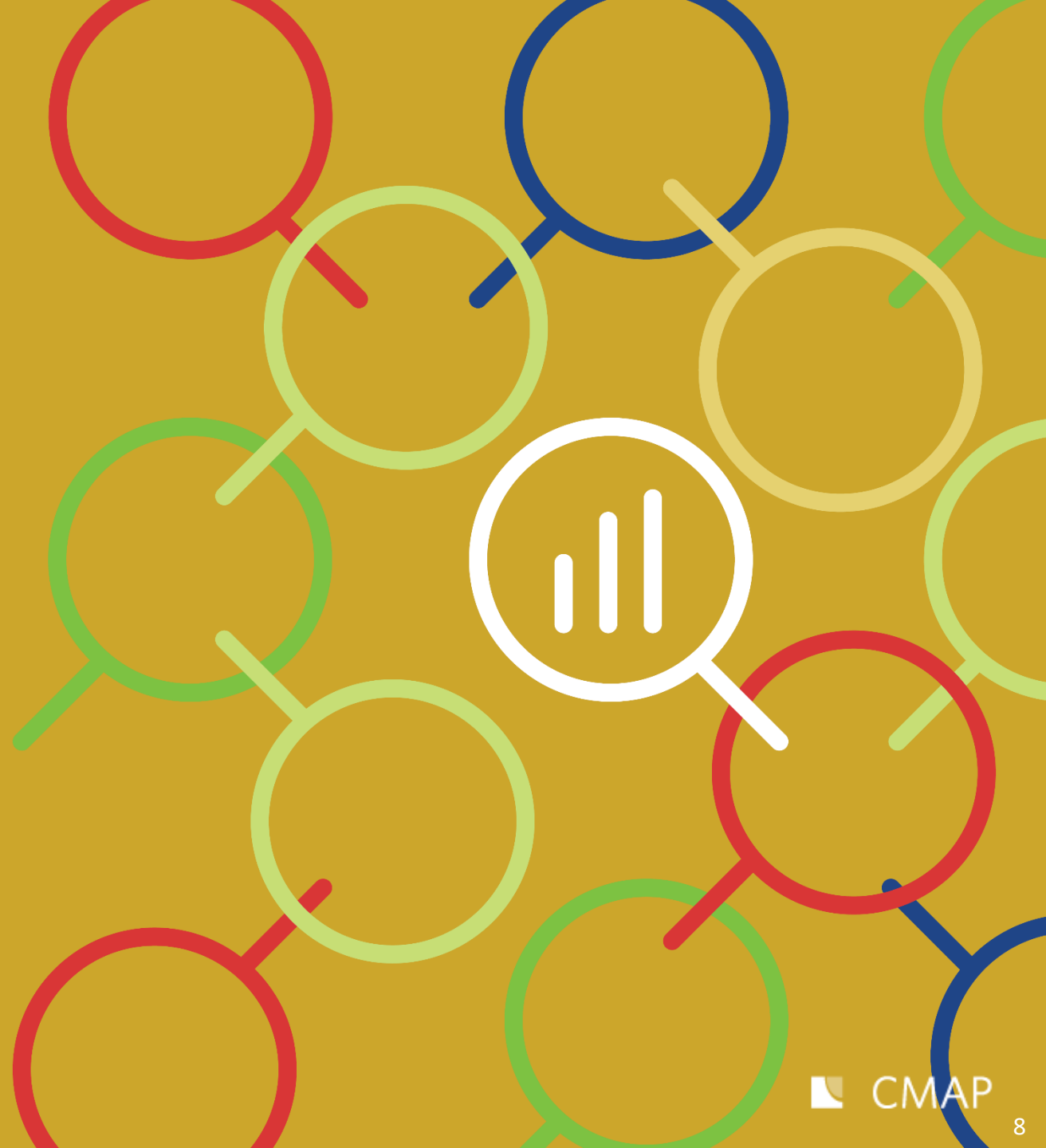
CMAP will provide financial support to organizations representing marginalized communities so that they can participate more fully in CMAP's federally-funded planning initiatives

Targeted Engagement

Appropriate regional organizations may include but are not limited to those representing:

- People of color
- People with low incomes
- Immigrant and refugee populations
- People with disabilities
- LGBTQ+ people
- Youth
- Seniors
- People who were formerly incarcerated
- Limited English Proficiency (LEP) populations

Schedule



Consultant Team Selection

- | | |
|-------------------|---------------------------------|
| December 1, 2020: | RFP released |
| January 8, 2021: | Proposal deadline |
| January 15, 2021: | Finalists interviewed |
| March 3, 2021: | Contract approved by CMAP Board |
| April 2021: | Project launch |

Consultant Team

- Center for Neighborhood Technology (CNT)
 - Daylight
 - Borderless Studio
 - Urban Transportation Center (UTC) at UIC



Schedule

Year 1	Year 2	Year 3
<p>Task 1: Program Design</p> <p>8 Months</p> <p>Steps:</p> <ul style="list-style-type: none"> ① CMAP Workshops ② Community Group Interviews ③ Program Development <p>Deliverable:</p> <ul style="list-style-type: none"> ① Program Design Memo 	<p>Task 2: Program Recruitment & Participant Selection</p> <p>4-6 Months</p> <p>Steps:</p> <ul style="list-style-type: none"> ① Recruitment & Selection ② Involvement & Capacity-Building <p>Deliverables:</p> <ul style="list-style-type: none"> ② Program Materials ④ Implementation of Program 	
	<p>Task 3: Process Payments & Monitor Performance</p> <p>24 Months</p> <p>Deliverables:</p> <ul style="list-style-type: none"> ④ Implementation of Program ③ Documentation of program expenses ⑤ Closeout Memo 	
<p>Task 4: Program Evaluation</p>		
<p>Step:</p> <ul style="list-style-type: none"> ① Pre-Intervention Phase <p>Deliverable:</p> <ul style="list-style-type: none"> * Insights for Program Design & Capacity-Building 	<p>Step:</p> <ul style="list-style-type: none"> ② Intervention Phase 	<p>Step:</p> <ul style="list-style-type: none"> ③ Post-Intervention Phase <p>Deliverable:</p> <ul style="list-style-type: none"> ⑥ University Evaluation Memo

Questions

Who makes up the “universe” of regional community groups that CMAP might engage?

What areas of CMAP’s work should be prioritized for engagement? What type of feedback would the committee find most useful?

How should the feedback from the program be communicated to committees and board?



Elizabeth Scott
escott@cmapp.illinois.gov

Ryan Thompto
rthompto@cmapp.illinois.gov

www.cmap.illinois.gov