

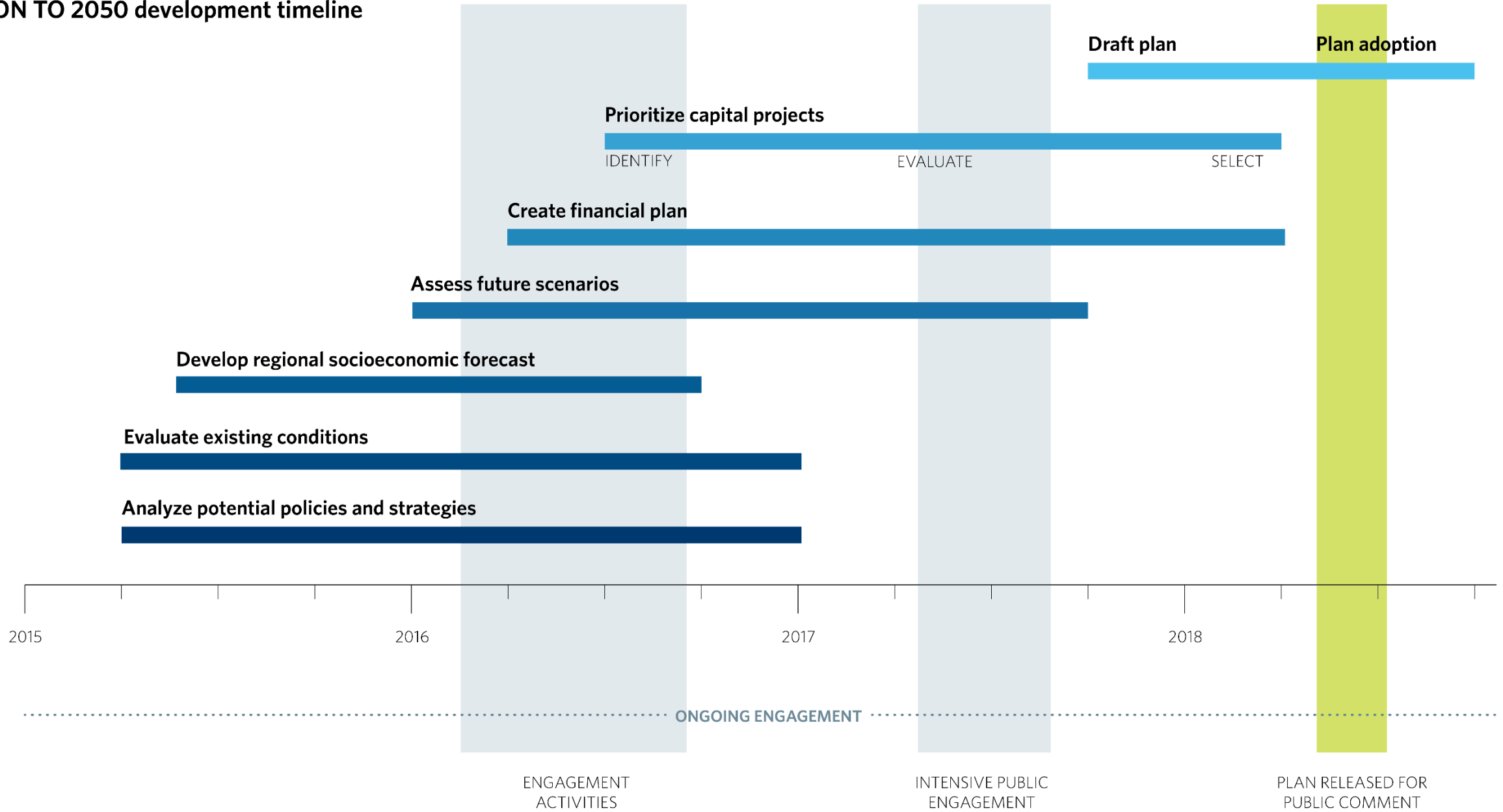


# ON TO 2050

# Public Comment Summary

Land Use Committee  
September 19, 2018

# ON TO 2050 development timeline





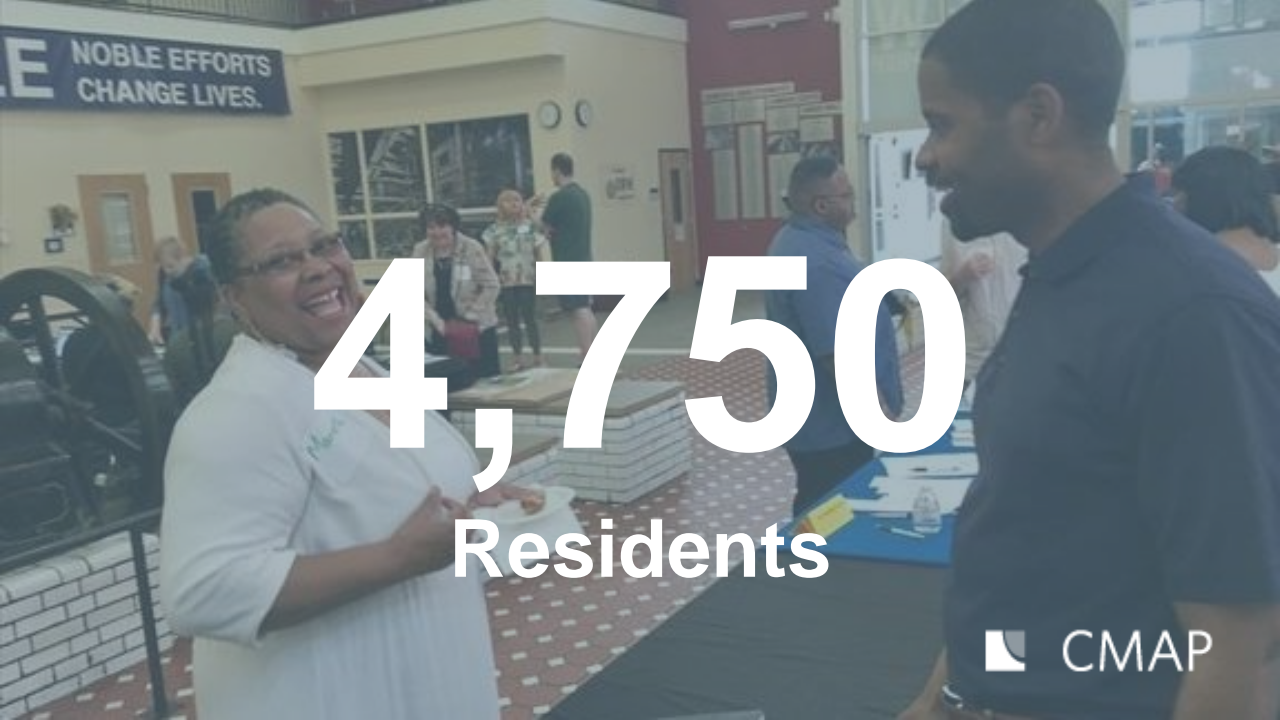
**10**  
Forums



**277**  
Workshops



**100,000+**  
Kiosk interactions



**4,750**  
Residents

# Phase 3: Draft ON TO 2050 Plan

ON TO 2050  
COMPREHENSIVE  
REGIONAL PLAN

Draft  
for public  
comment

This draft document will be available for public comment from June 15 to August 14, 2018. Submit comments at [www.cmap.illinois.gov](http://www.cmap.illinois.gov) or by email using the subject line "ON TO 2050 Public Comment" to [ONTO2050@cmap.illinois.gov](mailto:ONTO2050@cmap.illinois.gov). Or comment by mail to Chicago Metropolitan Agency for Planning, Attention: ON TO 2050 Public Comment, 233 South Wacker Drive, Suite 800, Chicago IL 60606, or by phone to 312-454-0400.

 CMAP

# 38

## Committee Presentations

# 11

## Open houses

# 1

## Public hearing



# Comments came in many forms...

- 473 Web form comments
- 453 Emails, letters, or calls
- 28 Open house comment cards
- 16 Public hearing statements

**970 Public Comments**

# Comment campaigns

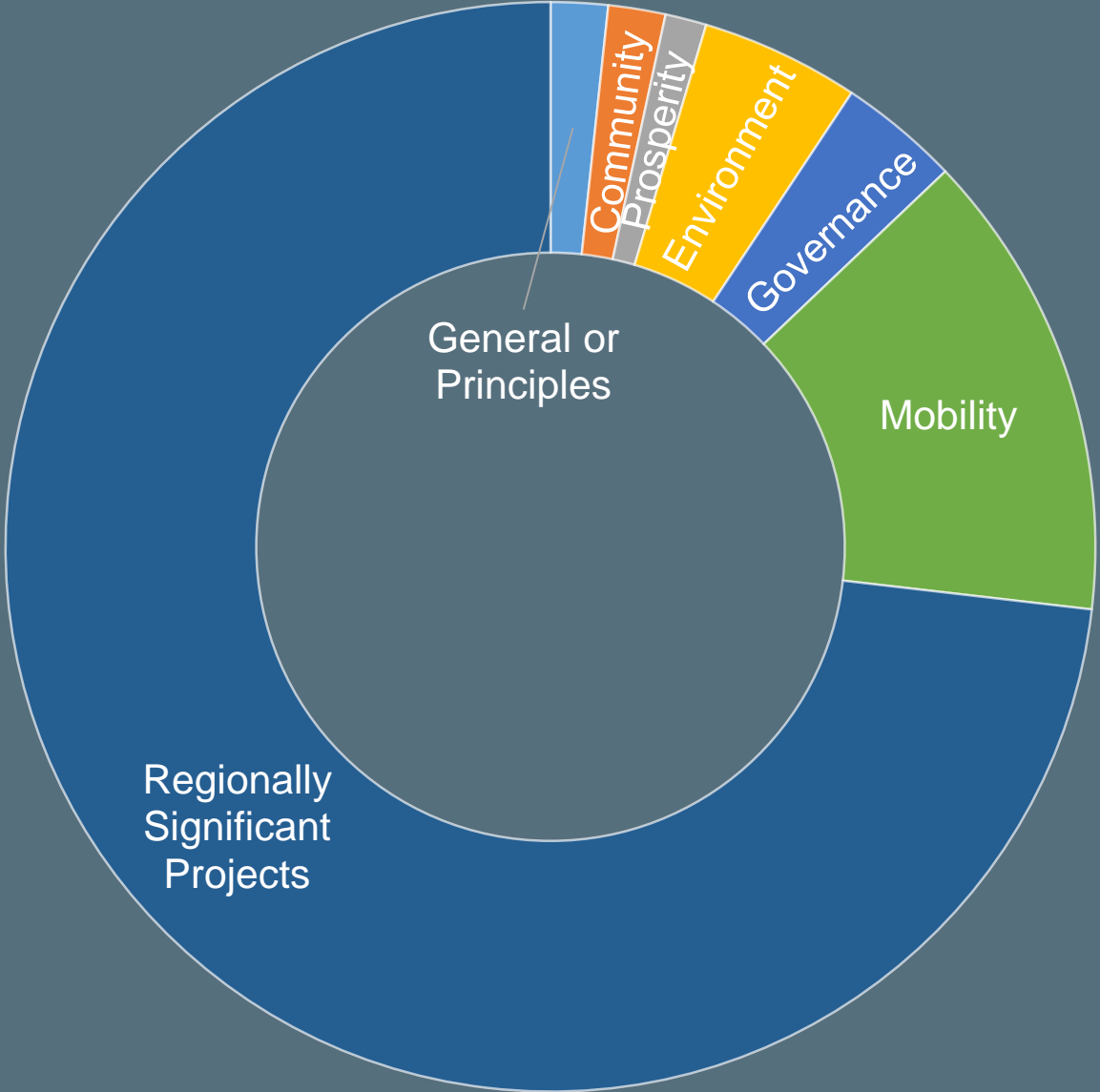
CrossRail

BNSF extension

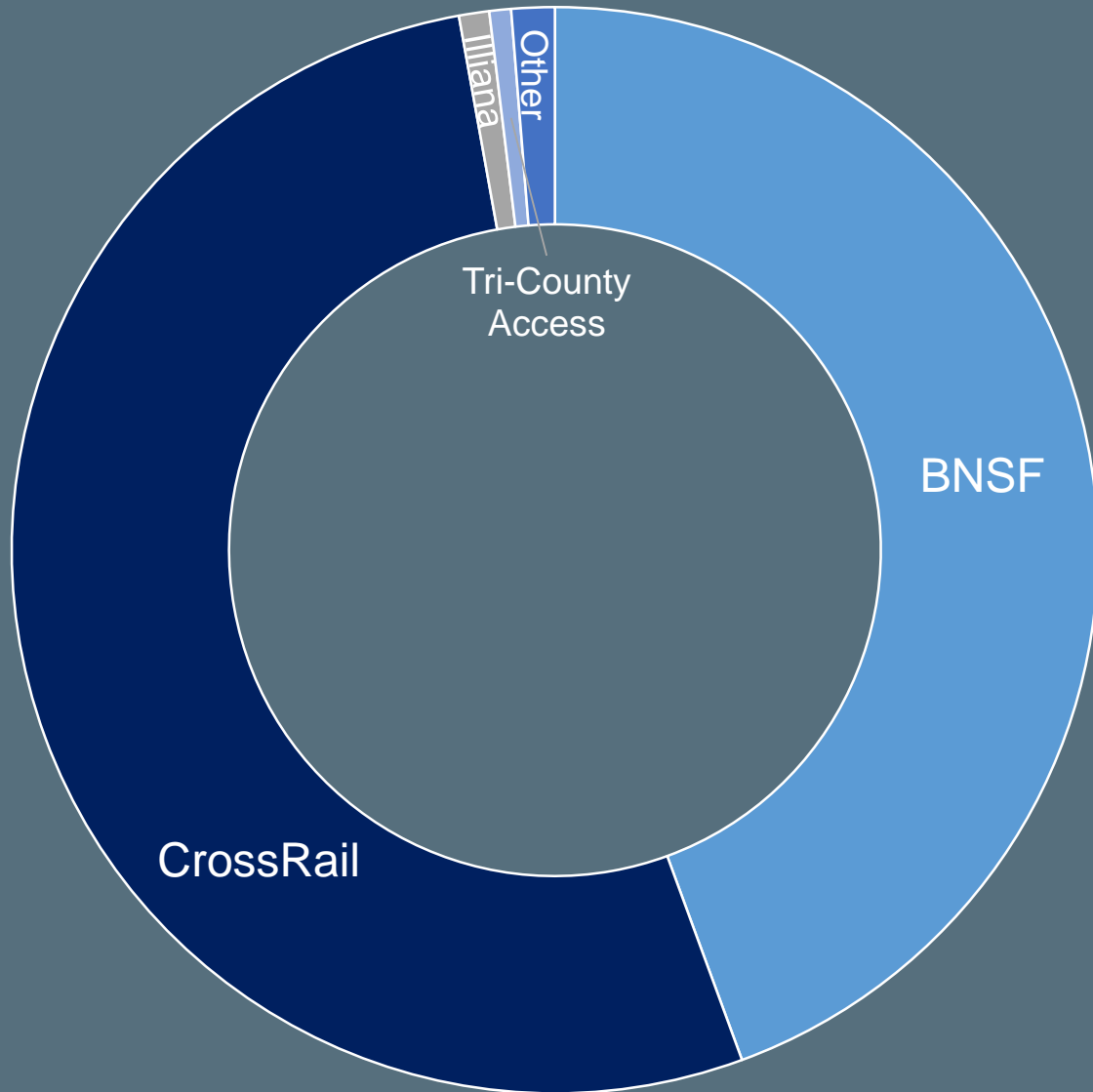
Smaller campaigns:

- Limit expressway expansion and support active modes
- Reduce the community impact of freight

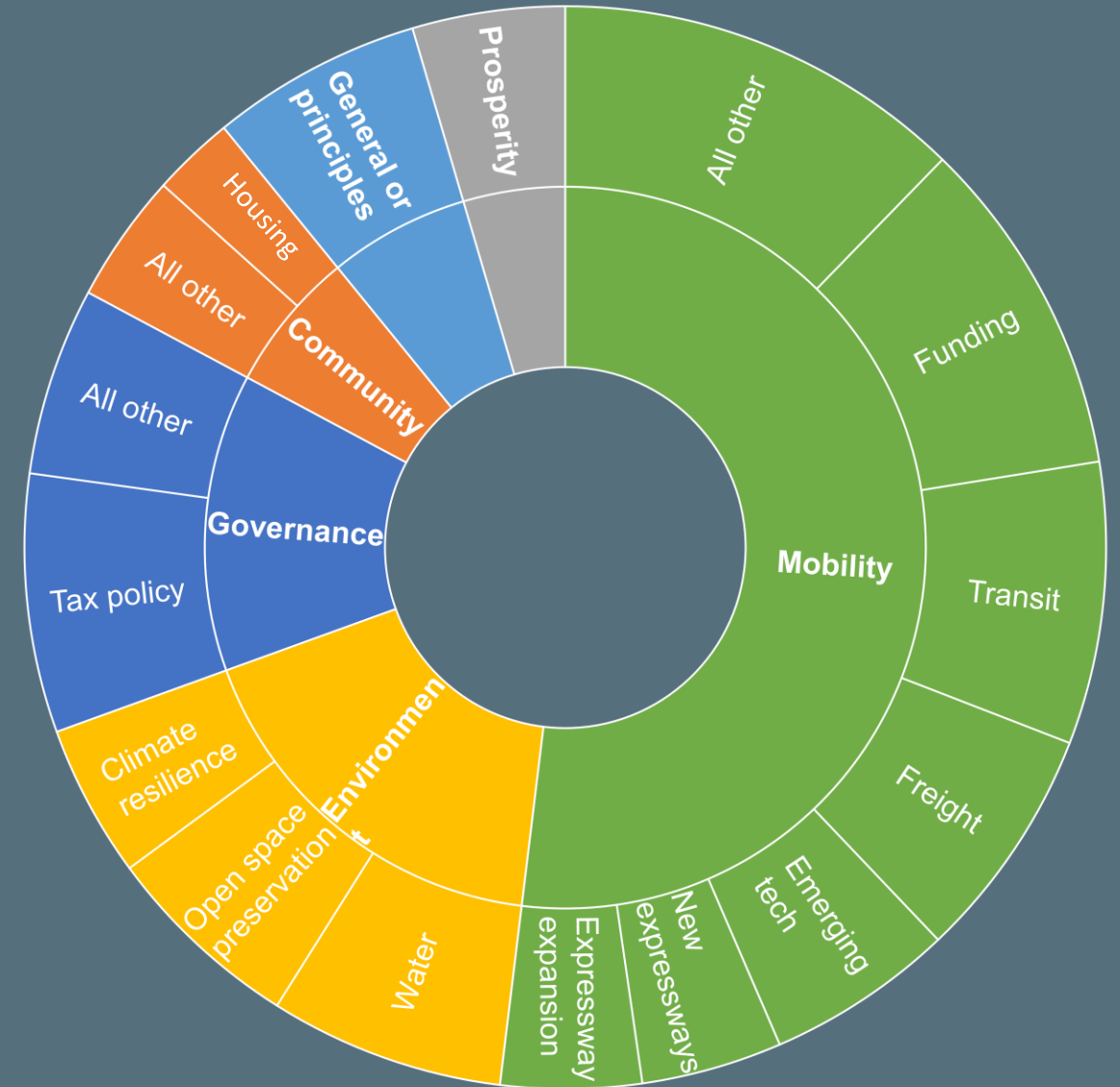
# Comments by chapter



# Comments addressed many issues



RSPs



Chapters



# Overarching changes

Highlight opportunities to plan for residents with disabilities

Emphasize the historic roots of today's racial inequities

Better connect recommendations and indicators

Offer more local examples, particularly for smaller transportation projects

# Community

Adapted housing recommendations to include planning for residents with disabilities

# Governance

Reoriented tax policy recommendation to focus on modernization

Commenters supportive of partnerships and capacity building, with questions

# Prosperity

Adjustments throughout to emphasize disability and inclusive growth

Clarified the relationship between state, regional, and local economic development efforts

# Environment

Numerous comments in support of planning for environmental issues highlighted in the plan

No major changes

# Mobility

Clarify goals and intent for VMT recommendation

Highlight multimodal projects, smaller projects

Add language on the impacts of freight

Retain proposed fiscally constrained RSP list, with small wording changes

# Next steps

Revise

Draft for approval at the September 28<sup>th</sup> Transportation Committee

Planning and Programming discuss on October 3<sup>rd</sup>

CMAP Board and MPO discuss on October 10<sup>th</sup>

**Please register  
for the launch event**



<https://cmap.is/ONTO2050-Launch>

# Questions?

[www.cmap.illinois.gov/onto2050](http://www.cmap.illinois.gov/onto2050)

Elizabeth Schuh  
eschuh@cmap.illinois.gov