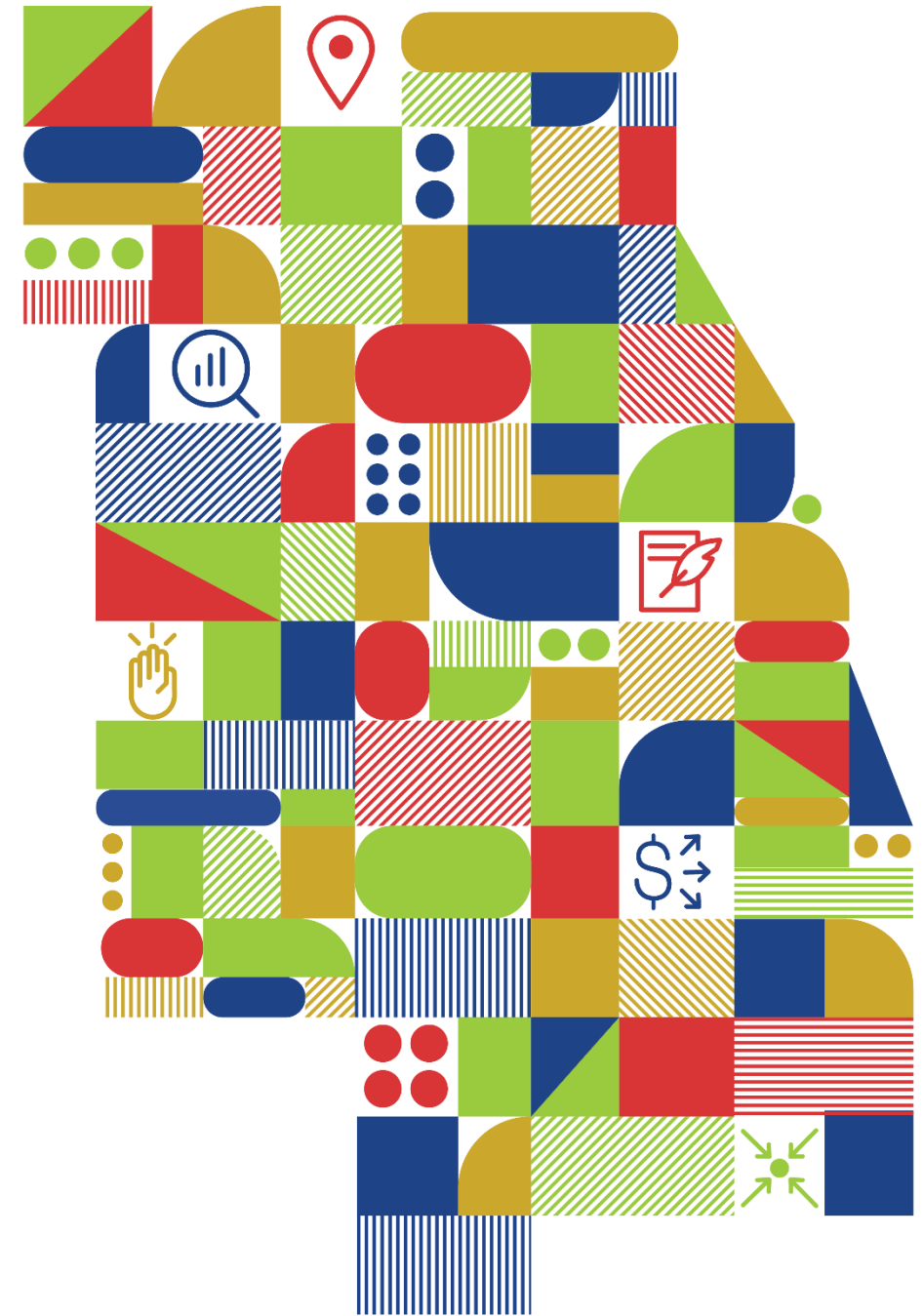




Local Government Network (LGN): Goals & Potential



Serving emergent needs.

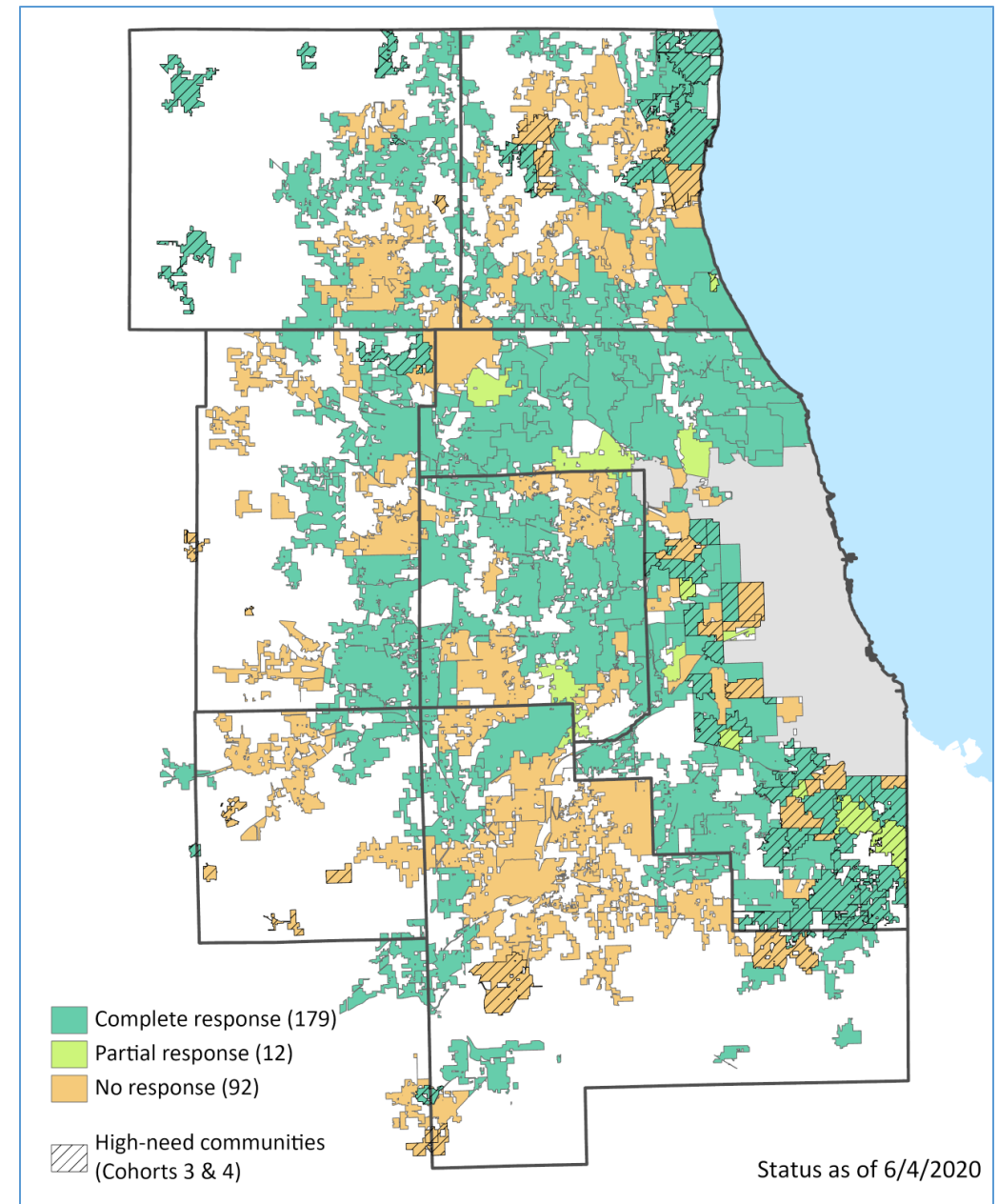


Initiative #1: COVID19 Survey

Data supported City of Chicago's COVID-19 Recovery Task Force

Comprehensive contact info cleanup

Established ongoing relationships w/ CMAP primary contacts



Initiative #2: Community Data Snapshots

Greater awareness of core CMAP service

Personal follow-ups aide understanding of data use

Municipalities

- Addison
- Algonquin
- Alsip
- Antioch
- Arlington Heights

CMAP Community Data Snapshot | Braidwood

POPULATION AND HOUSEHOLD
The population and household tables include general demographic, social, and economic characteristics summarized for Braidwood.

GENERAL POPULATION CHARACTERISTICS, 2014-2018

	Braidwood		Will County		CMAP Region	
	Count	Percent	Count	Percent	Count	Percent
Total Population	6,284		688,697		8,511,032	
Total Households	2,467		227,848		3,107,682	
Average Household Size	2.5		3.0		2.7	
% Population Change, 2000-10	19.0		34.9		3.5	
% Population Change, 2010-18	1.5		1.6		0.9	
% Population Change, 2000-18	20.8		37.1		4.5	

Source: 2000 and 2010 Census, 2014-2018 American Community Survey five-year estimates.

RACE AND ETHNICITY, 2014-2018

	Braidwood		Will County		CMAP Region	
	Count	Percent	Count	Percent	Count	Percent
White non-Hispanic	5,818	92.6	442,248	64.2	4,367,579	51.3
Hispanic or Latino	285	4.5	117,522	17.1	1,944,675	22.8
Black non-Hispanic	19	0.3	75,872	11.0	1,419,547	16.7
Asian non-Hispanic	13	0.2	36,393	5.3	603,513	7.1
All other categories	149	2.4	16,662	2.4	175,718	2.1

Source: 2014-2018 American Community Survey five-year estimates. Universe: Total population.

AGE COHORTS, 2014-2018

	Braidwood		Will County		CMAP Region	
	Count	Percent	Count	Percent	Count	Percent
19 and Under	1,546	24.6	195,837	28.4	2,191,110	25.7
20 to 34	1,188	18.9	124,861	18.1	1,807,984	21.2
35 to 49	1,347	21.4	149,106	21.7	1,713,974	20.1
50 to 64	1,431	22.8	135,243	19.6	1,641,420	19.3
65 to 74	562	8.9	51,064	7.4	669,758	7.9
75 to 84	192	3.1	23,314	3.4	337,105	4.0
85 and Older	18	0.3	9,272	1.3	149,681	1.8
Median Age*	40.6		37.6		37.2	

Source: 2014-2018 American Community Survey five-year estimates. Universe: Total population.

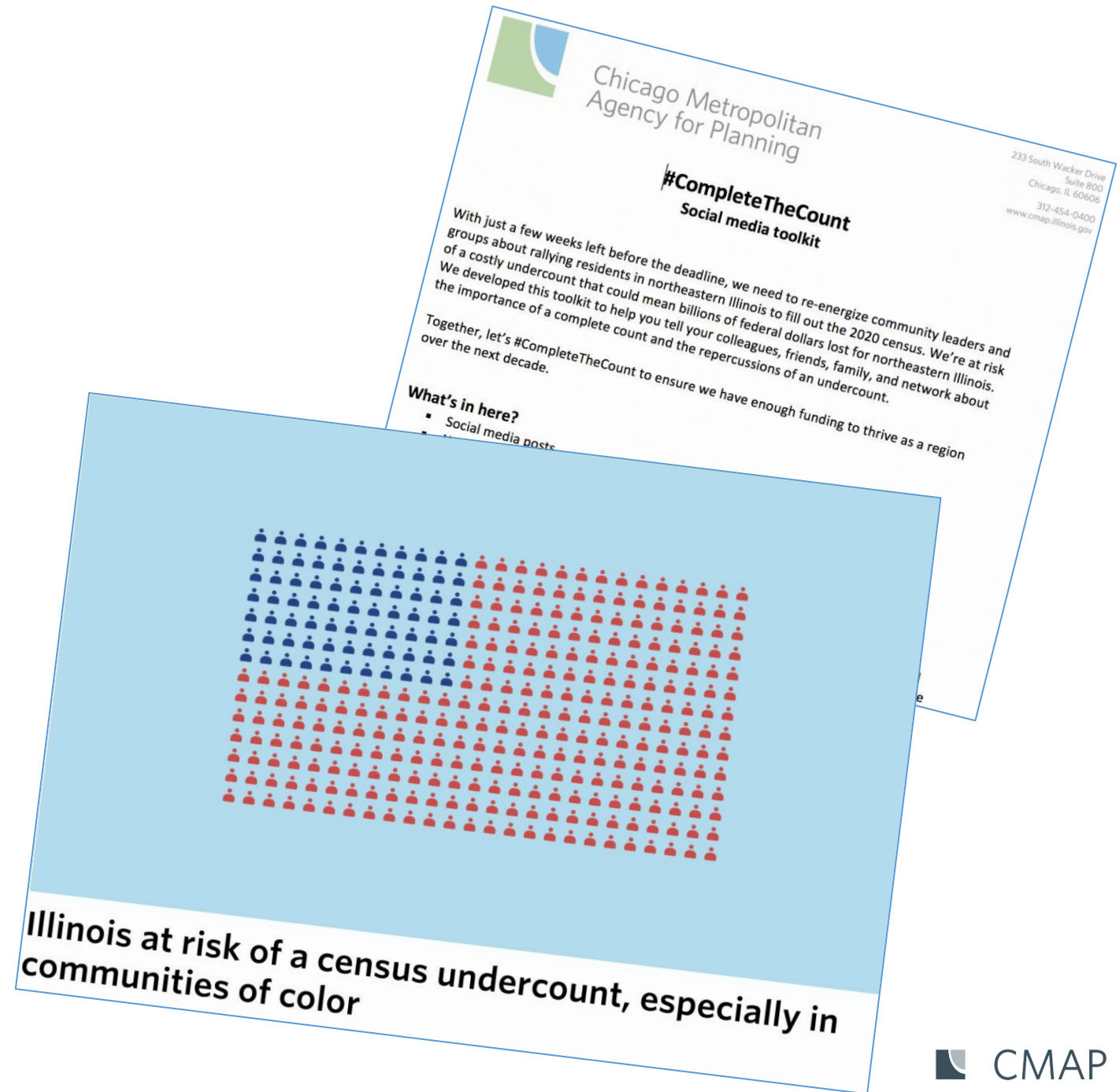
- Burn
- on
- on Hills
- ark
- Park
- d
- ville
- y
- k
- ngdale
- and

Initiative #3: Census undercount

Amplifies regional priority

Social media toolkit

Agency & partner coordination



Where should we go now?



Discussion Questions

Currently the Local Government Network (LGN) seeks to establish primary contacts at all 284 municipalities and 7 counties. Looking ahead, should additional governments be included in the LGN? If so, which?

Currently the LGN connects a CMAP staff liaison with a primary contact for each local government to facilitate two-way communication. Looking ahead, should the network seek to do more- such as fostering collaboration between governments on identified opportunities?

Thank you!

Patrick Day, AICP
pday@cmap.illinois.gov

