



Prairie Path and Taft Ave Corridor Plan

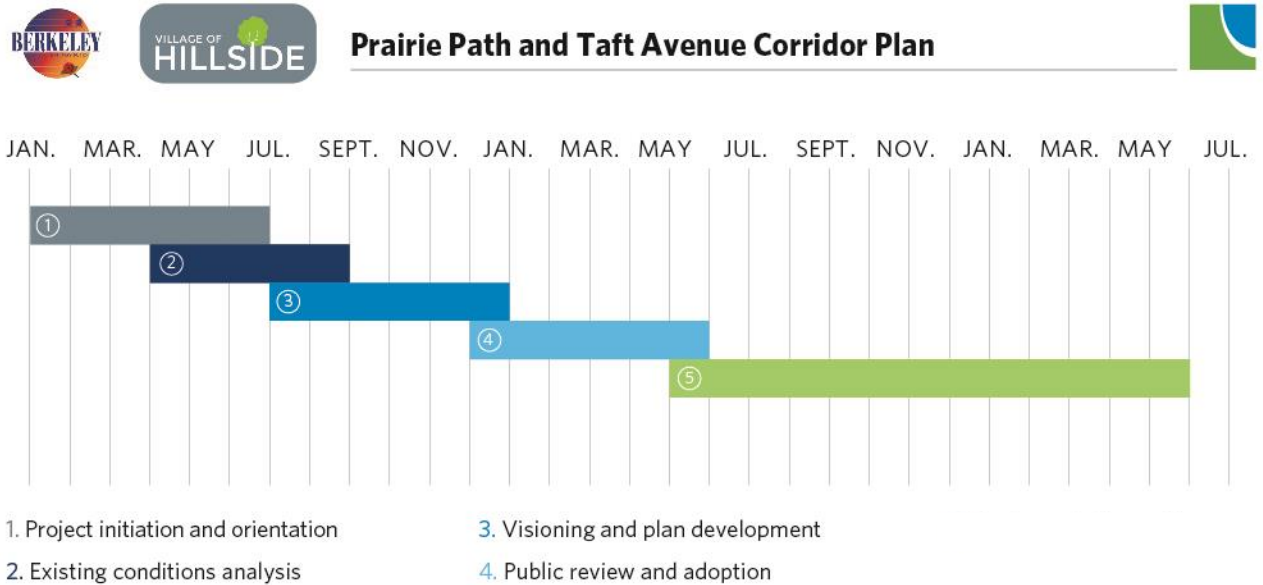
**Coordinating Committee Meeting
April 14, 2021**

Project Background

The Illinois Prairie Path is a 60 mile, heavily used trail that brings visitors through Berkeley, Hillside, and other communities.

CMAP will work with the three project partners – the Village of Berkeley, the Village of Hillside, and the Berkeley Park District, to create a shared vision for the Prairie Path and Taft Avenue Corridor to increase pedestrian and bicycle traffic along the path, attract businesses to the area, and enhance parks and open space for residents and path users.

Project Timeline



Study Area Map

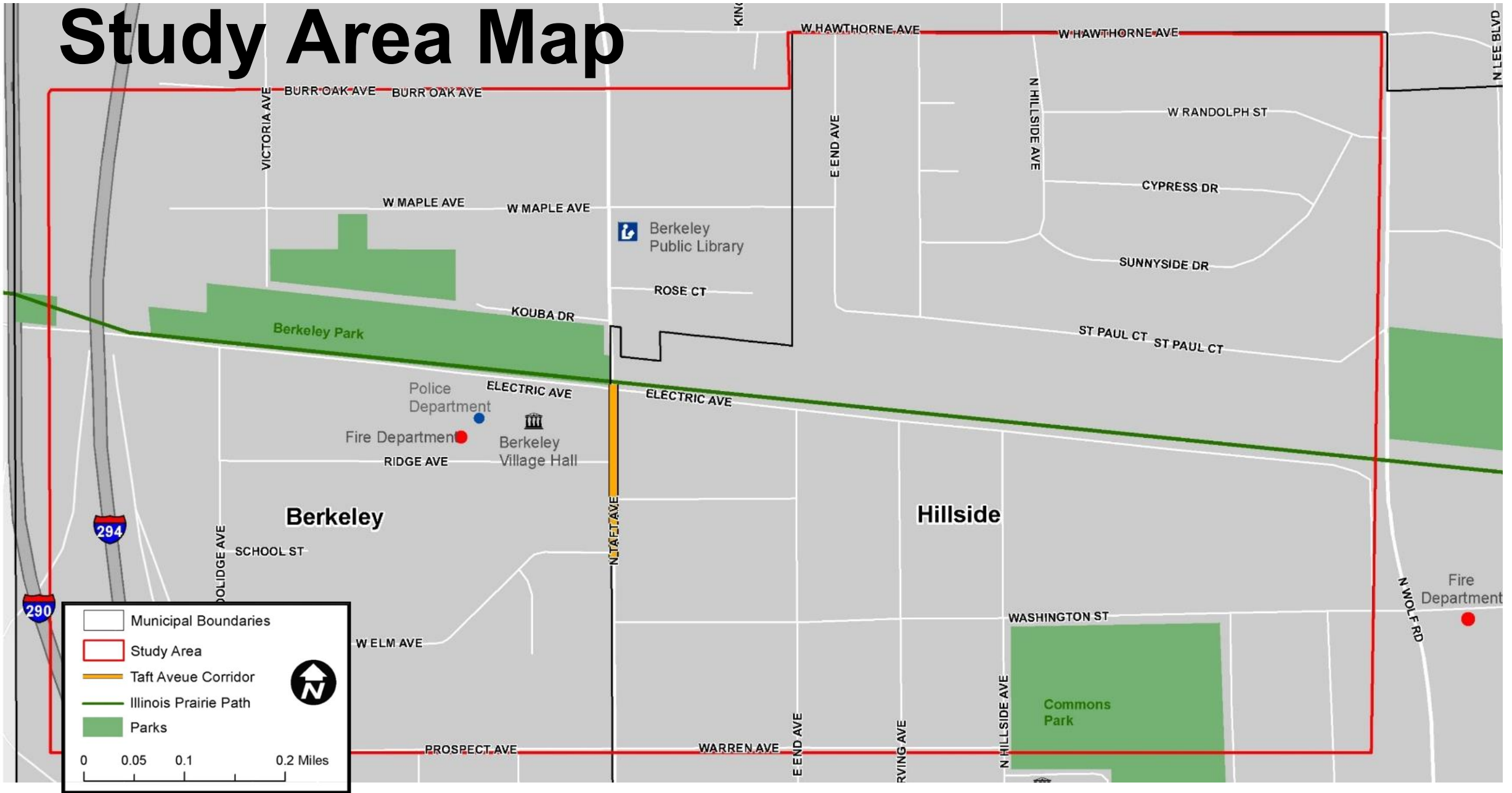
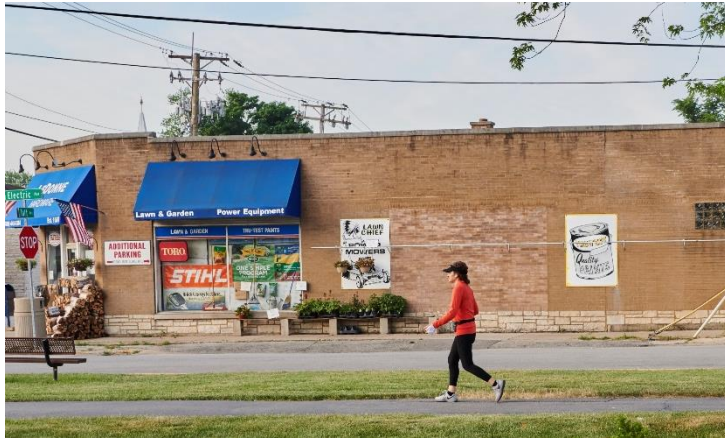


Fig. X. Study Area Map

What will this plan cover?



Economic Development



Transportation



Placemaking



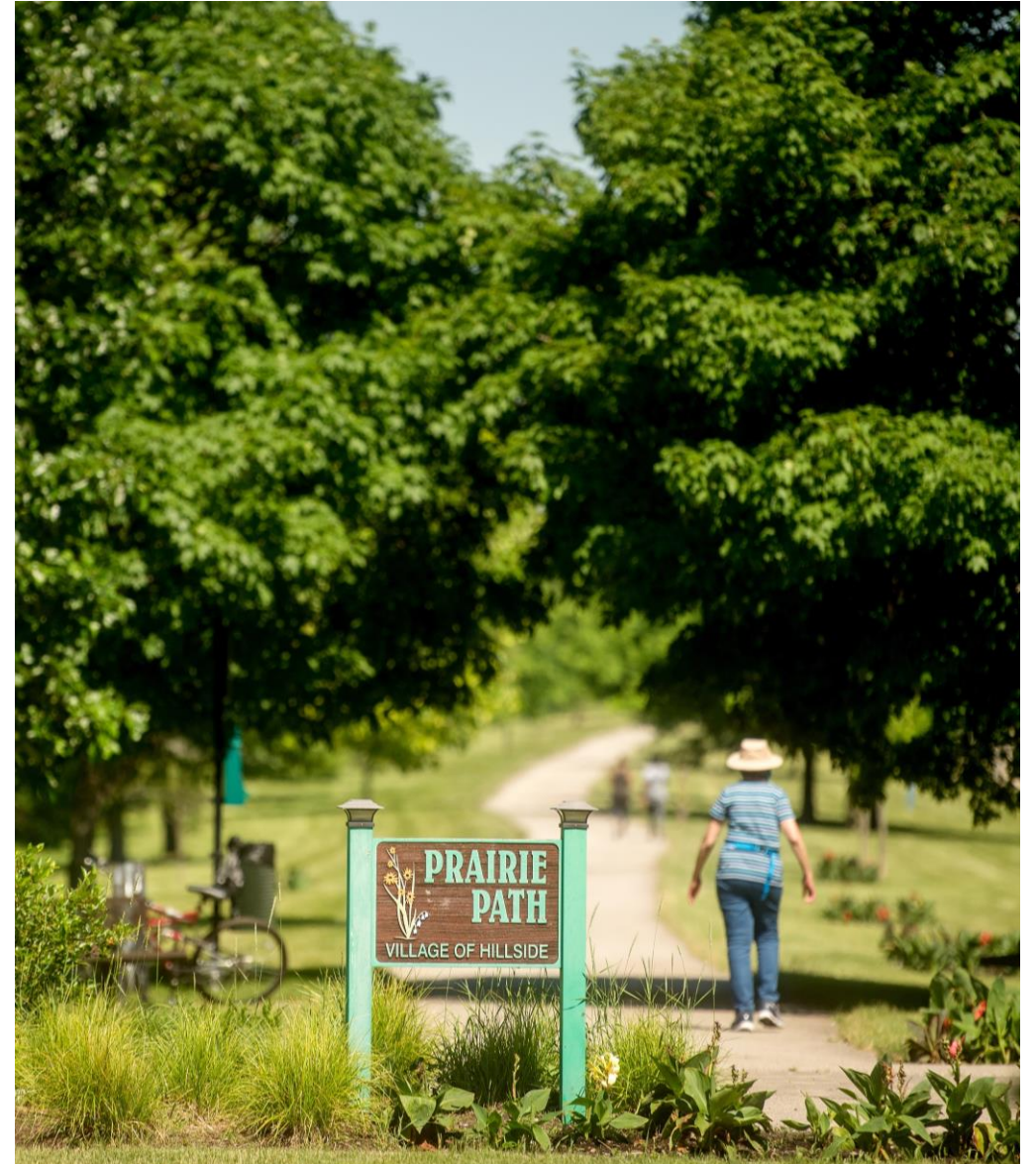
Development

Planning Process

Existing Conditions Analysis
(completed June 2020)

Community Engagement
(ongoing)

Key Recommendations
Development
(upcoming)



Study Area Demographic Data



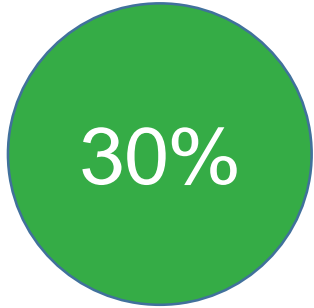
Median Age



Total Households



Average Household



High School Graduate



38%

Some College

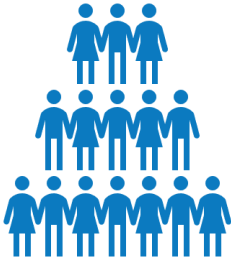


23%

Bachelor's/Graduate Degree

Source: Esri Business Analyst, 2020

Study Area Economic Data



2,571

2020
Population



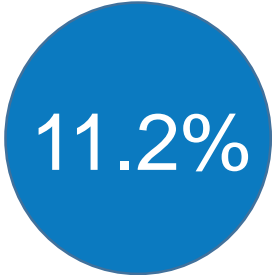
\$62,400

2020 Median
Household Income



\$29,299

2020 Per Capita
Income



Unemployment Rate



23

Total Businesses



214

Total Employees

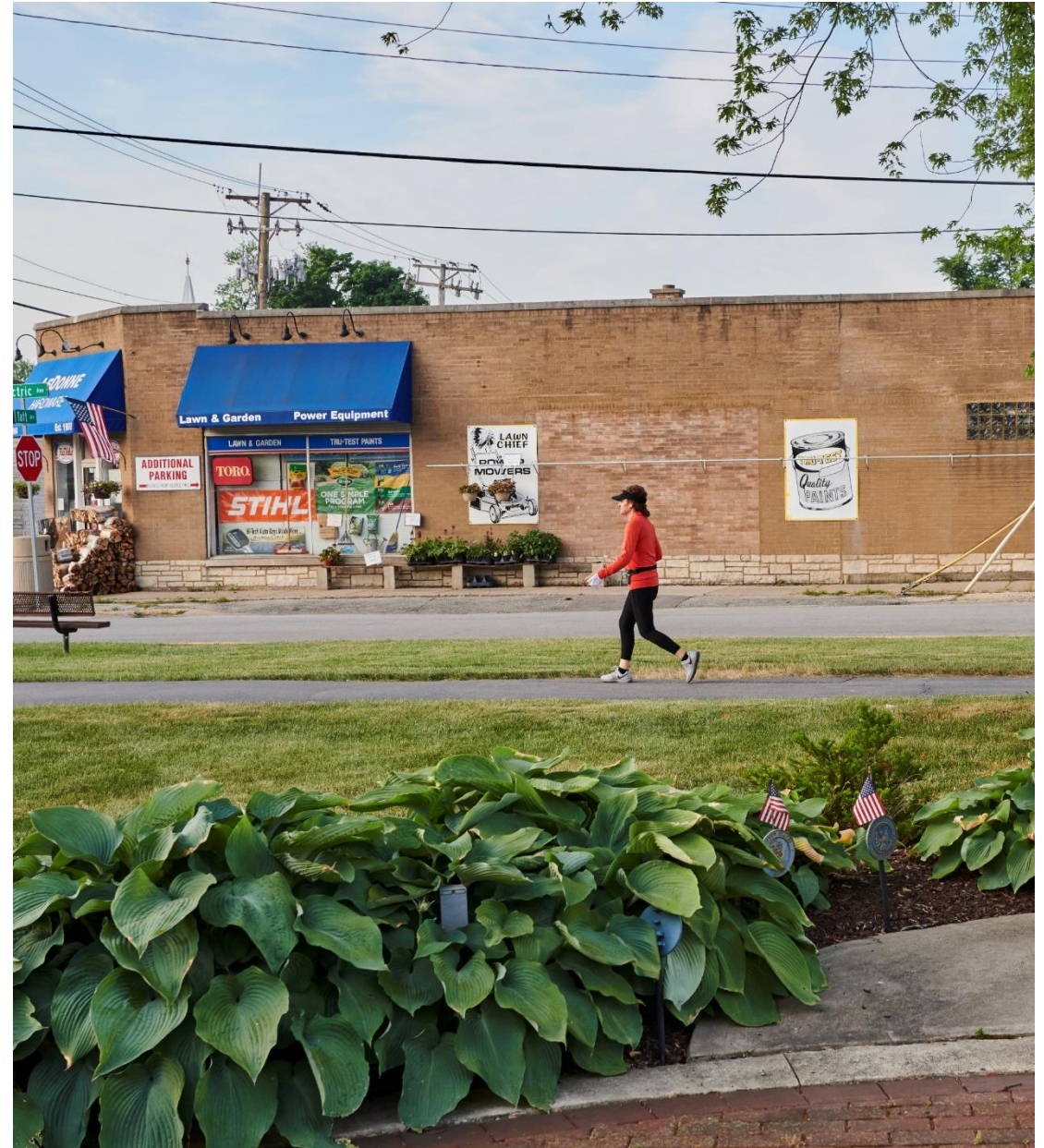
Source: Esri Business Analyst, 2020

Economic Development Key Takeaways

The study area has a low retail vacancy rate, but currently has very little retail.

A retail gap analysis uncovered opportunities for neighborhood scale retail and services, including restaurants.

The Taft Avenue Corridor faces competition from nearby retail corridors.



Transportation Key Takeaways

The Union Pacific West Metra line and several Pace bus routes connect the study area to surrounding communities.

Most streets in the study area have a sidewalk on both sides.

Average Daily Traffic Counts along Electric Avenue and Taft Avenue are relatively low, compared to other major corridors.



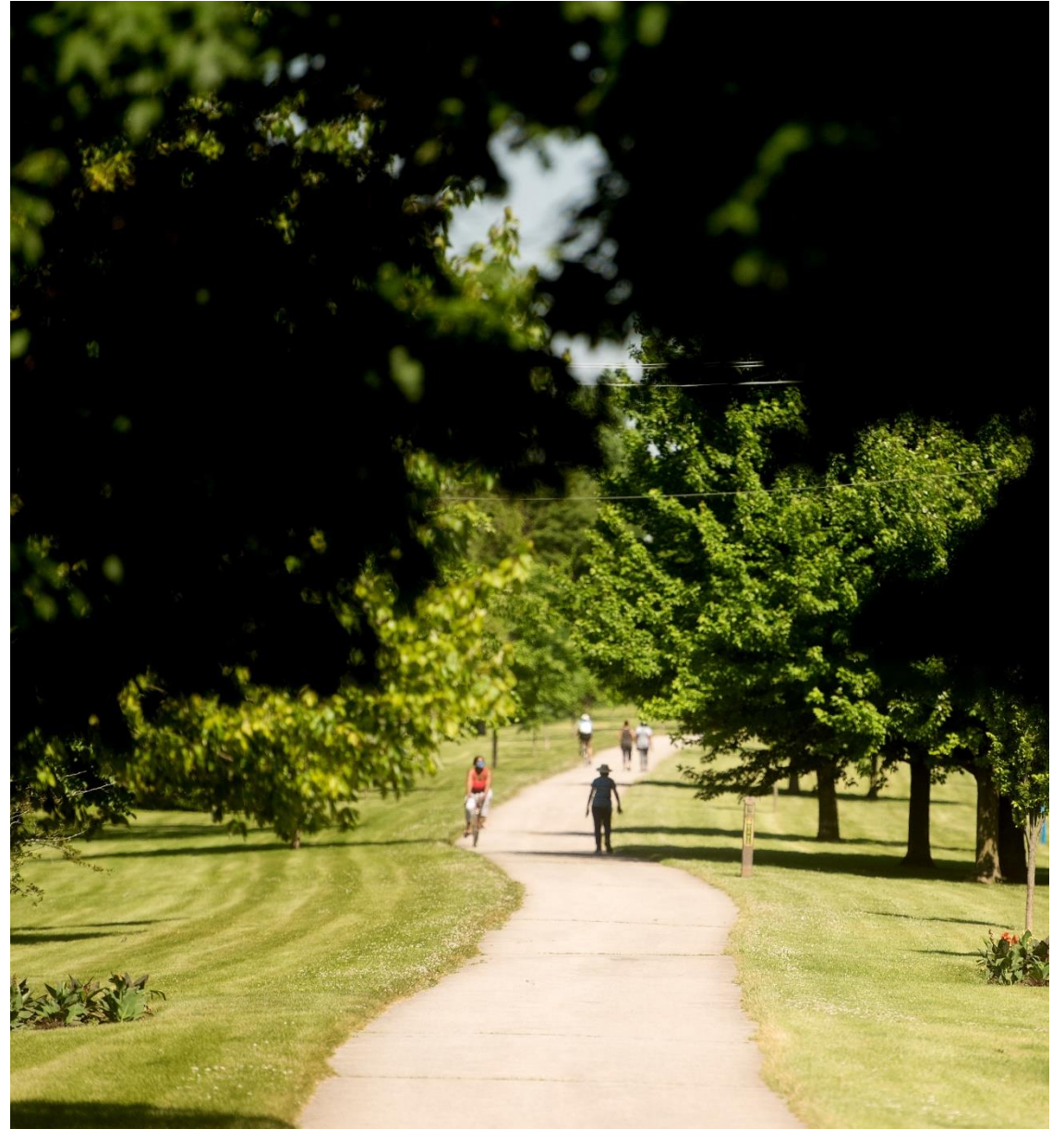
Natural Resources

Key Takeaways

The Prairie Path connects the study area to a larger network of open space.

There are opportunities to increase access to open space for residents of the study area.

The study area has moderate flood susceptibility.



Community Engagement

Prairie Path and Taft Avenue Corridor Plan



The Illinois Prairie Path is a multi-use nature trail for non-motorized public uses that spans over 60 miles through various municipalities in Cook, DuPage, and Kane Counties. This heavily used trail brings visitors through Berkeley, Hillside, and other communities.

The Village of Berkeley, Village of Hillside, and the Berkeley Park District, in partnership with the Chicago Metropolitan Agency for Planning (CMAP), are working to develop a shared vision for the Prairie Path and Taft Avenue corridor to increase pedestrian and bicycle traffic along the path, attract businesses to the area, and enhance parks and open space for residents and path users.

To develop a vision for the study area, we need your help! Please use this site to share your ideas about the future of the Prairie Path and Taft Avenue Corridor.



STAY INFORMED

Subscribe for project updates

Your email address...

SUBSCRIBE

5 members of your community are following this project

Quick Poll



What type of business/service would you like to see along the Taft Ave Corridor?

- Coffee Shop
- Fast-Casual Restaurant
- Grocery/Convenience Store
- Bike Shop

View Results

SUBMIT

Map Your Ideas

Share your Ideas

Take a Survey



Prairie Path and Taft Avenue Corridor Interactive Map

4 months



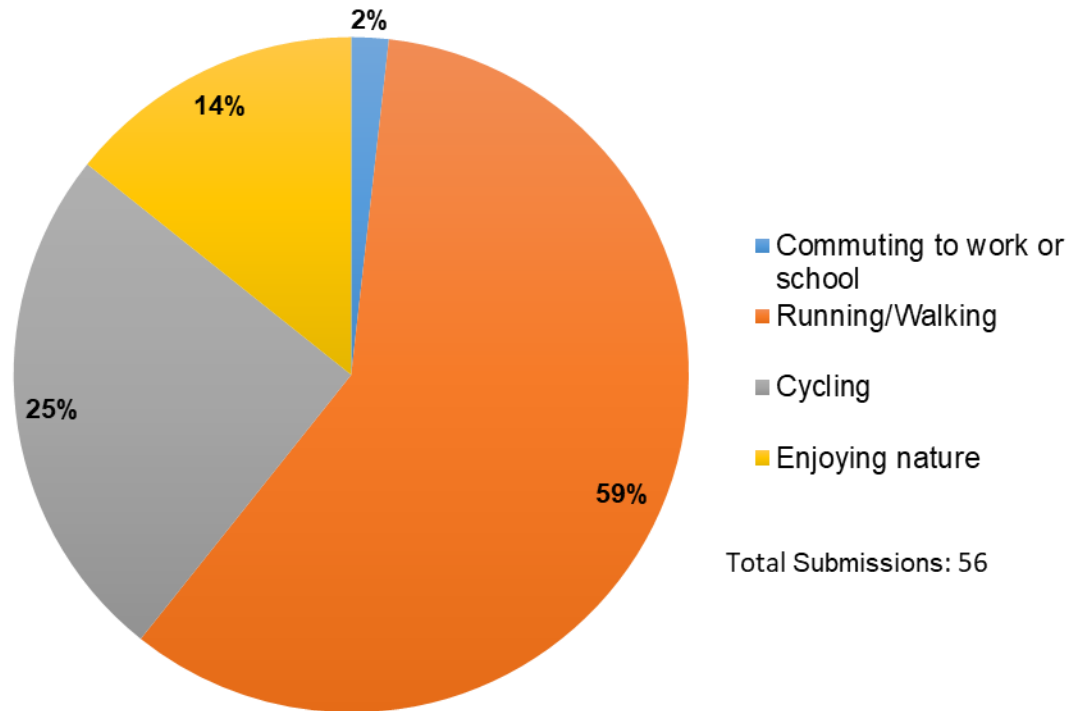
We'd like your input! Place/drop a pin to show us where there are issues and opportunities in the Prairie Path and Taft Ave Corridor study area, and what type of improvements you'd like to see in the future.

Click the + sign to the left to open the pin menu. Drag pins onto the map to provide feedback!

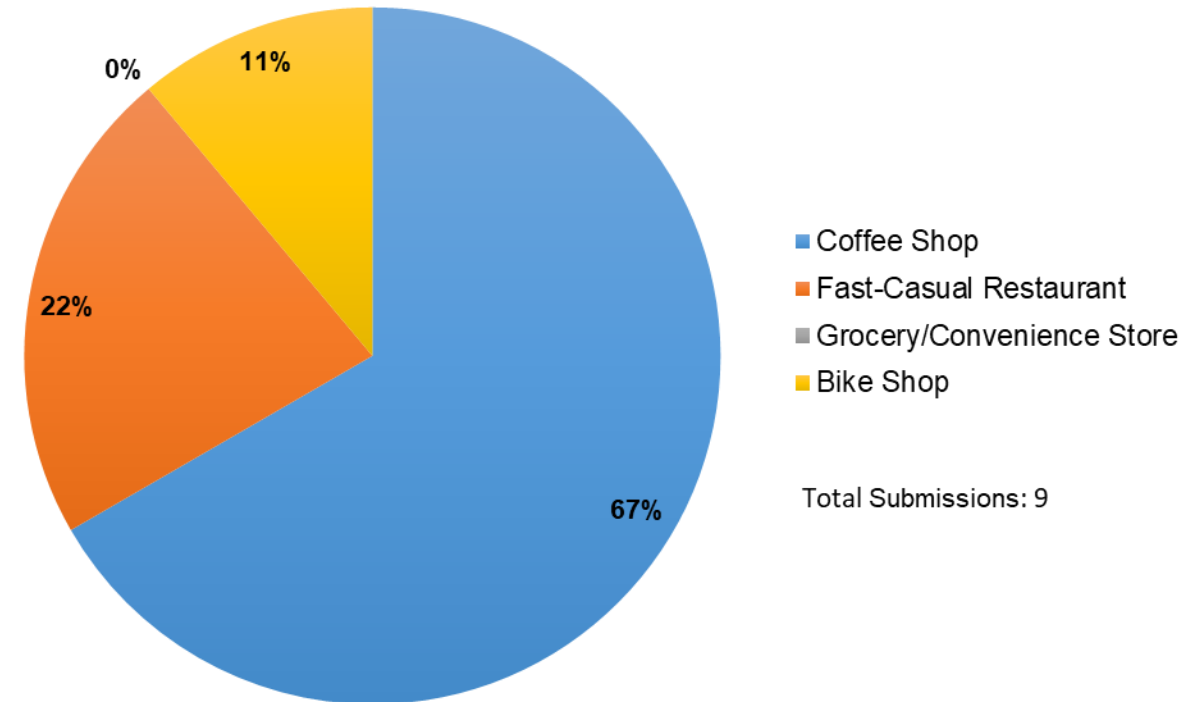
GO TO MAP

Engagement Tools Summary

How do you primarily use the Prairie Path?

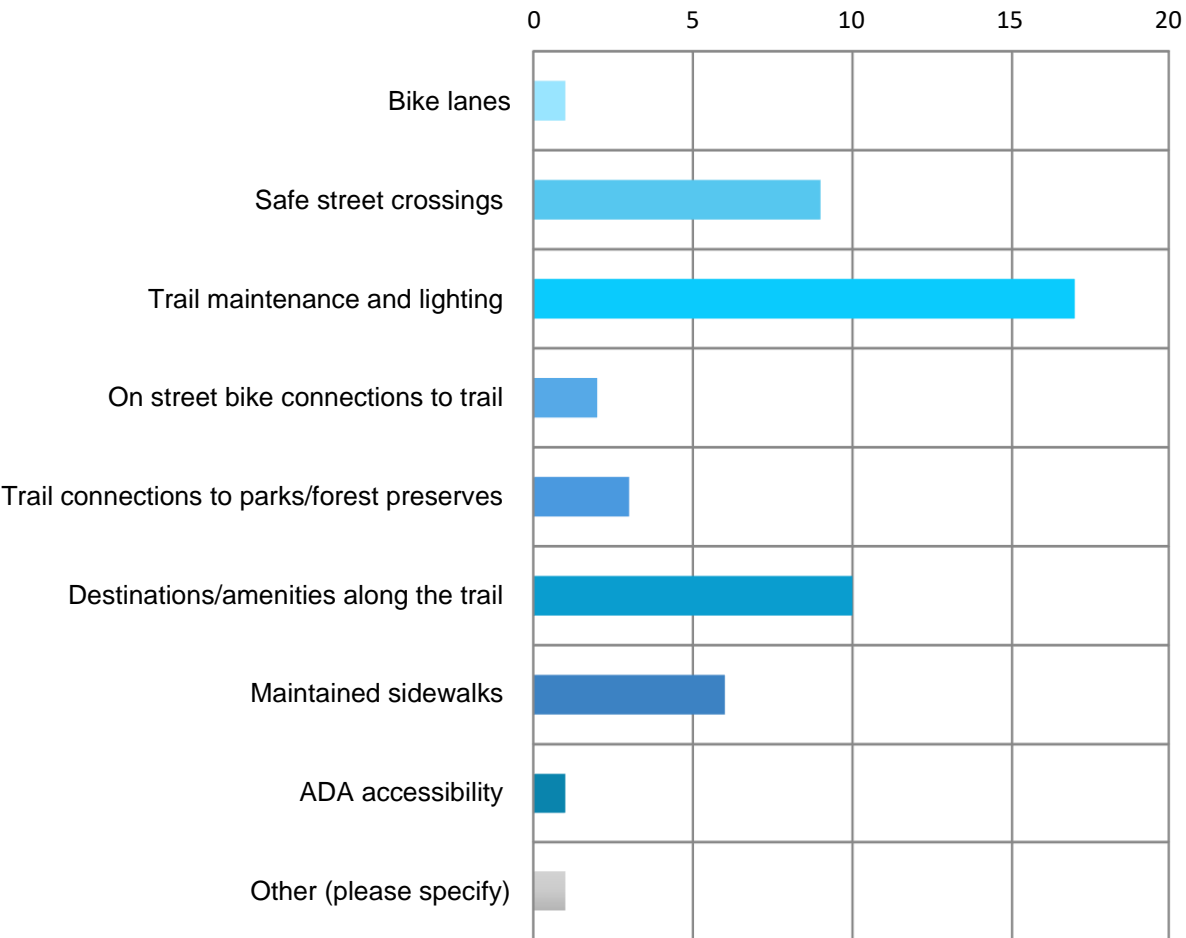


What type of business/service would you like to see along the Taft Ave Corridor?



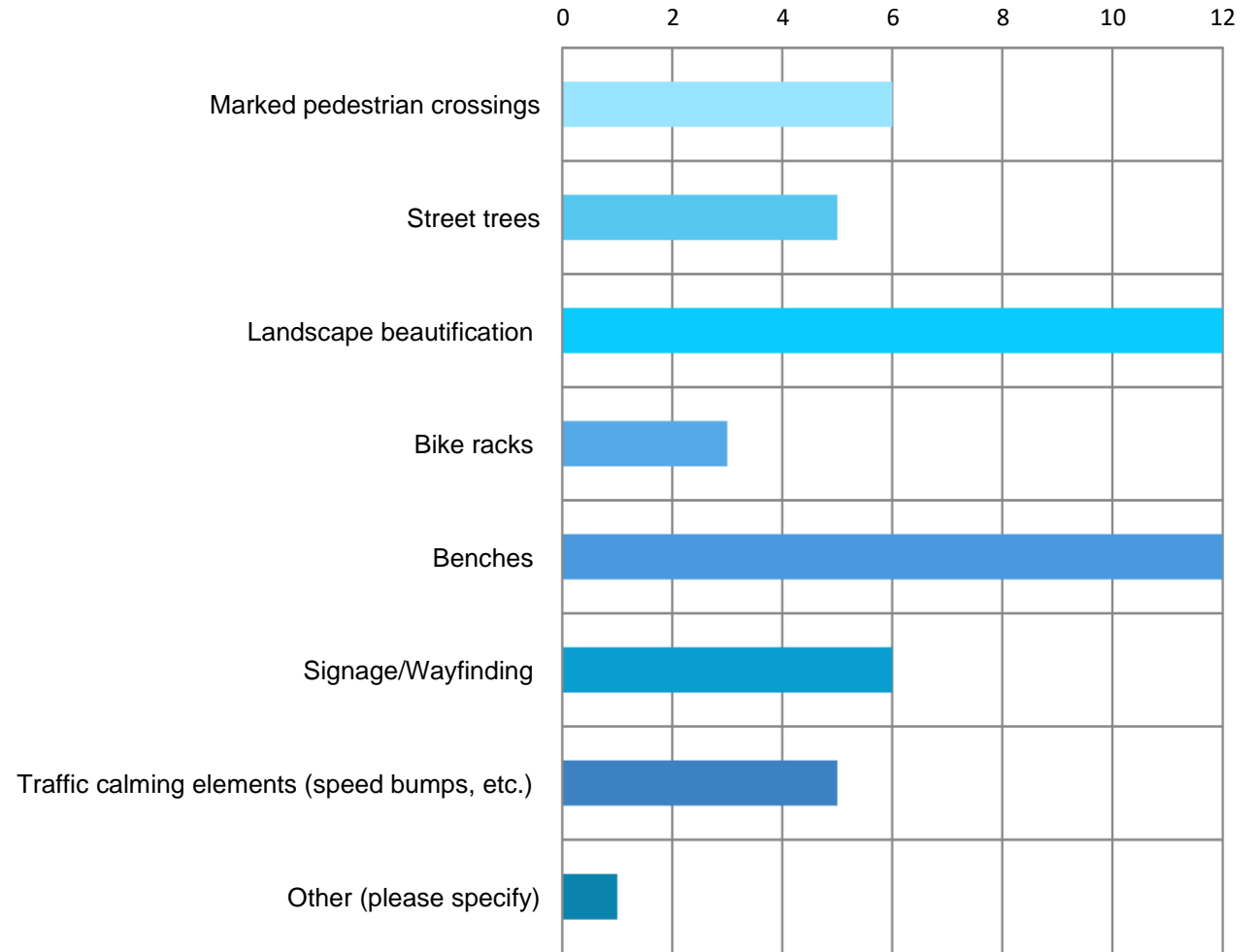
Engagement Tools Summary

What is most important to you regarding bicycling and walking in the study area? (Choose up to 3)



Total submissions: 19

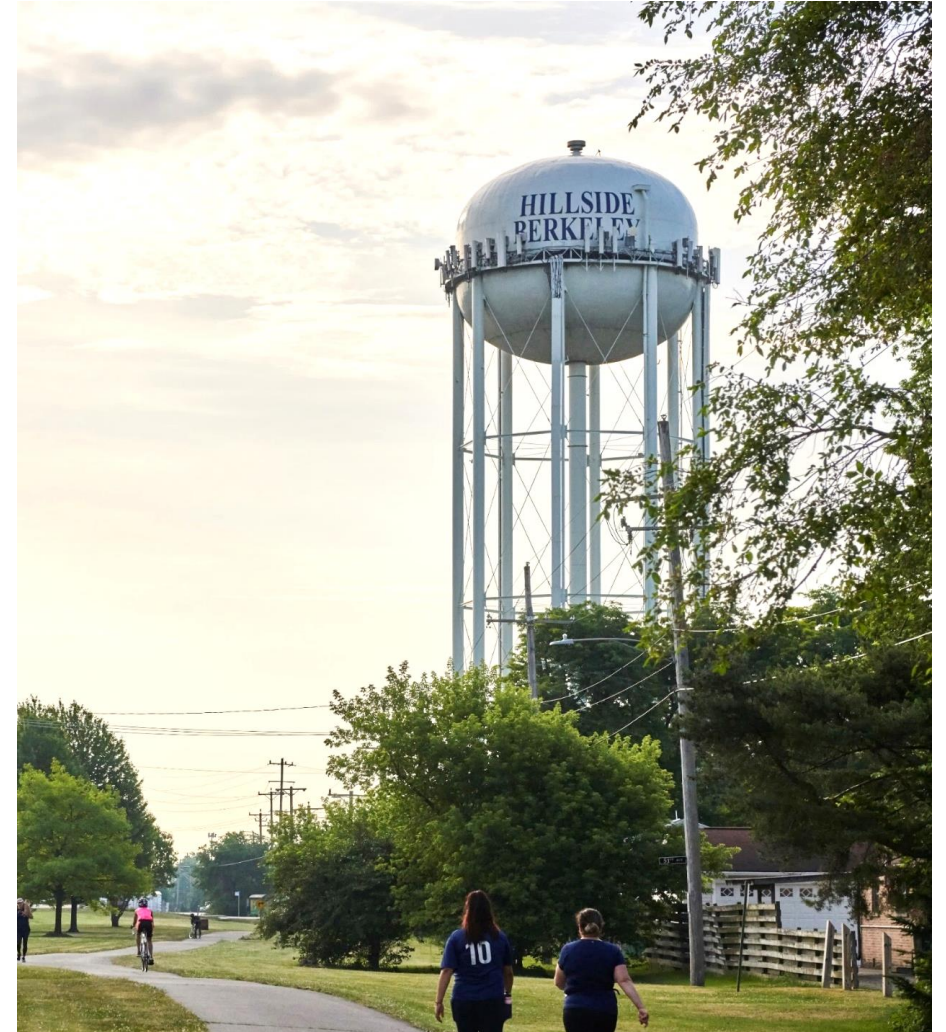
What is most important to you regarding streetscape improvements in the study area? (Choose up to 3)



Total submissions: 19

Community Engagement Ideas

- Better lighting along Prairie Path
- More native plants and gardens
- More trail amenities
- Coffee shop on Taft Ave
- Streetscape improvements
- Bike connection to Metra station
- Concert space/ programming at Berkeley Park

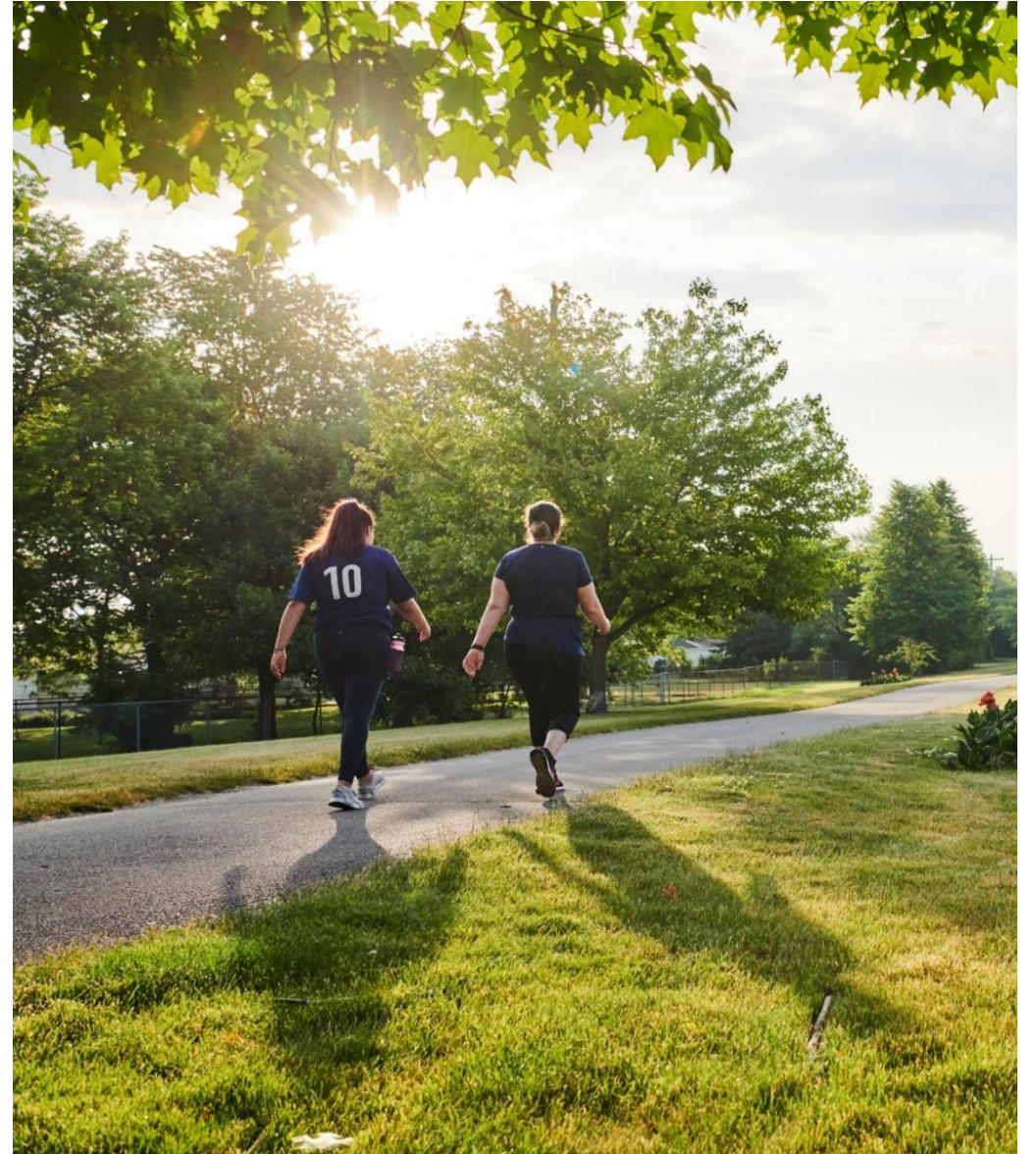


Next Steps

Prioritizing Potential Key Recommendations

Key Recommendations Memo

Community Visioning



Discussion

What are some examples of successful virtual community visioning events or approaches that could work for this project as we unveil our key recommendations?

Are there additional regional groups that might be interested in providing input as we develop the final plan?

Katie Piotrowska

kpiotrowska@cmap.Illinois.gov

Tony Manno

tmanno@cmap.Illinois.gov

Project Engagement Page:

engage.cmap.illinois.gov/prairie-path-and-taft-avenue-corridor-plan