

ON TO 2050

**ON TO 2050 Progress Report:
LOCAL STRATEGY MAPS
(LAYERS APPROACH)**

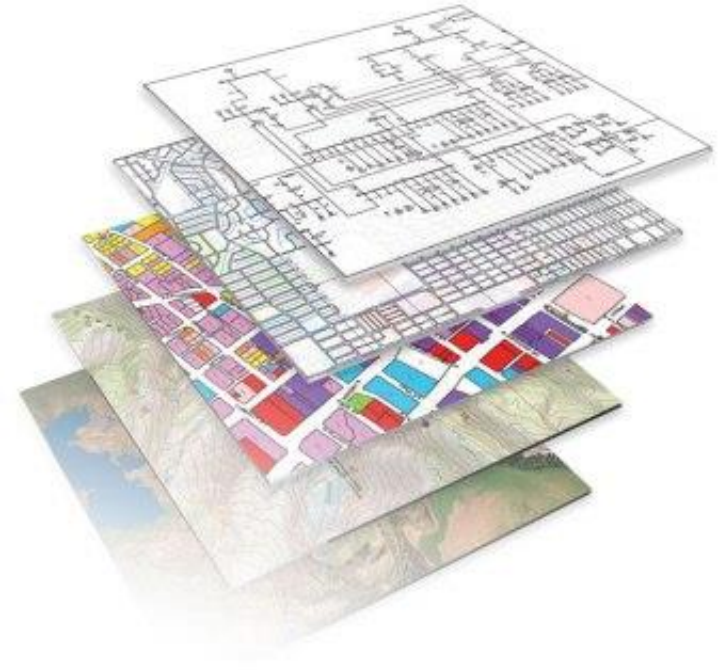
March 21, 2018

Local strategy maps concept

Goal: Develop maps and recommendations to help municipalities understand ON TO 2050 policies in their local context

Methods

- GIS-based data layers for approximately 20 topic areas to be released on Data Hub
- Tie-in with Community Data Snapshots
- Interactive maps in ON TO 2050
- Potential to follow up with more detail after plan adoption

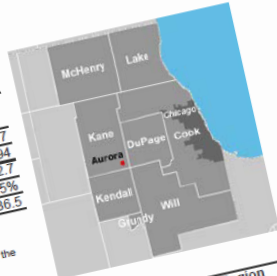


Community Data Snapshots

MetroPulse Community Data Snapshot | Aurora

GENERAL POPULATION CHARACTERISTICS, 2015

	Community	Kane County**	CMAP Region
Total Population	200,614	524,886	8,505,977
Total Households	61,449	172,479	3,067,594
Average Household Size	3.2	3.0	2.7
Population Change, 2000-10	38.4%	27.5%	3.5%
Median Age*	31.7	35.9	36.5



RACE AND ETHNICITY, 2015

	Community	Percent	Kane County	Percent	CMAP Region	Percent
White	77,409	42.2	305,352	58.2	4,437,089	52.2
Hispanic or Latino*	84,632	9.6	163,756	5.3	1,902,685	17.0
Black	19,234	7.4	19,321	3.7	1,443,074	6.8
Asian	14,833	2.2	8,784	1.7	564,622	1.9
Other	4,506				158,507	

Universe: Total population. *Includes Hispanic or Latino residents of any race

AGE COHORTS, 2015

	Community	Percent	Kane County	Percent	CMAP Region	Percent
19 and under	66,503	33.1	158,271	30.2	2,271,714	26.2
20 to 34	43,991	21.9	97,675	18.6	1,810,122	21.4
35 to 49	45,974	22.9	112,464	21.4	1,757,378	18.6
50 to 64	29,438	14.7	97,541	18.6	1,623,947	8.6
65 to 79	11,599	5.8	45,139	8.6	763,737	2.6
80 and Older	3,111	1.6	13,796	2.6	273,714	1.2

Universe: Total population. Source: 2015 American Community Survey five-year estimates.

HOUSEHOLD INCOME, 2015

	Community	Percent	Kane County	Percent	CMAP Region	Percent
Less than \$25,000	9,794	15.9	25,403	22.1	342,775	25.4
\$25,000 to \$49,999	13,580	22.1	34,275	20.0	311,775	20.0
\$50,000 to \$74,999	12,278	13.3	24,082	13.3	240,822	13.3
\$75,000 to \$99,999	8,185	15.9	31,427	15.9	314,275	15.9
\$100,000 to \$149,999	9,785	12.7	25,403	12.7	254,032	12.7
\$150,000 and Over	7,827		\$63,090			

Universe: Total household income. Source: 2015 American Community Survey five-year estimates.

EDUCATIONAL ATTAINMENT, 2015

	Community	Percent	Kane County	Percent	CMAP Region	Percent
High School Diploma or Higher	91,555	76.2	76.2	76.2	76.2	76.2
Bachelor's Degree or Higher	37,350	31.1	31.1	31.1	31.1	31.1

Universe: Population 25 and over. Source: 2015 American Community Survey five-year estimates.

ON TO 2050 Plan Recommendations - Top Areas of Importance

Community Data Snapshot: Aurora - Page Five

Walkability

Scores range from 0 - 62, downtown areas can improve walkability to achieve higher scores by ensuring that a complete network of sidewalks connect destinations.

Further reading
Non-motorized transportation report

Infill opportunities areas

Aurora falls entirely within infill supportive areas. Development within the highly supportive areas is recommended to accomplish regional goals.

Further reading
Reinvestment and Infill strategy paper
Lands in Transition strategy paper

Transit needs

Aurora has employment areas with poor transit access and high transit areas with limited employment. Improvements to connect jobs and transit will help the municipality reduce

Further reading
Transit Modernization strategy paper

Climate vulnerability

Aurora has a higher than average concentration of populations vulnerable to the impacts of a changing climate.

Further reading
ClimateResilience strategy paper

Local strategy maps

Land Use

- Housing market areas
- Infill supportiveness
- Locally identified mixed-use areas
- Disinvested areas
- Coordinated growth areas

Regional Economy/Governance

- Economically disconnected areas
- Employment centers (traded clusters)
- Municipal tax capacity

Transportation

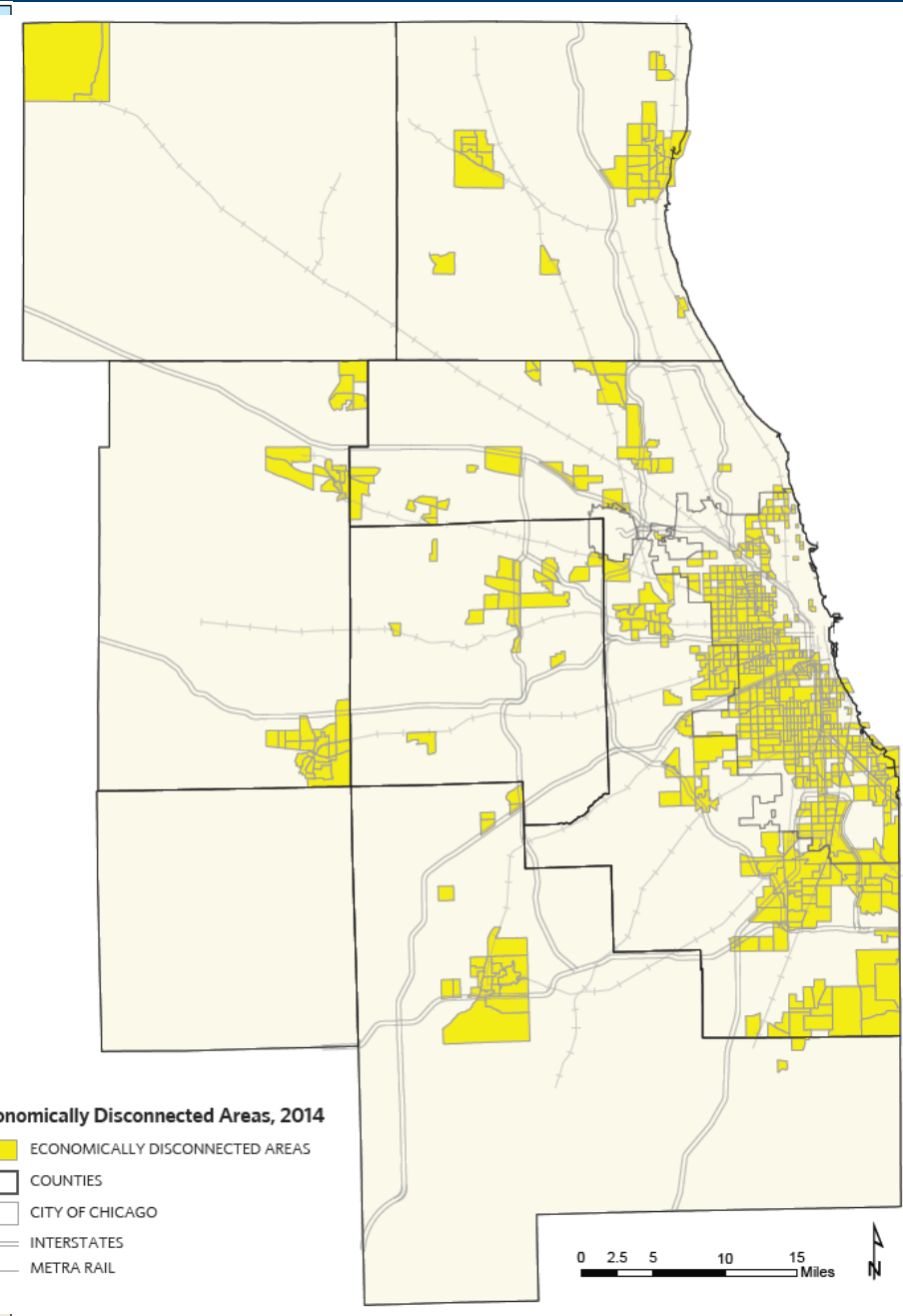
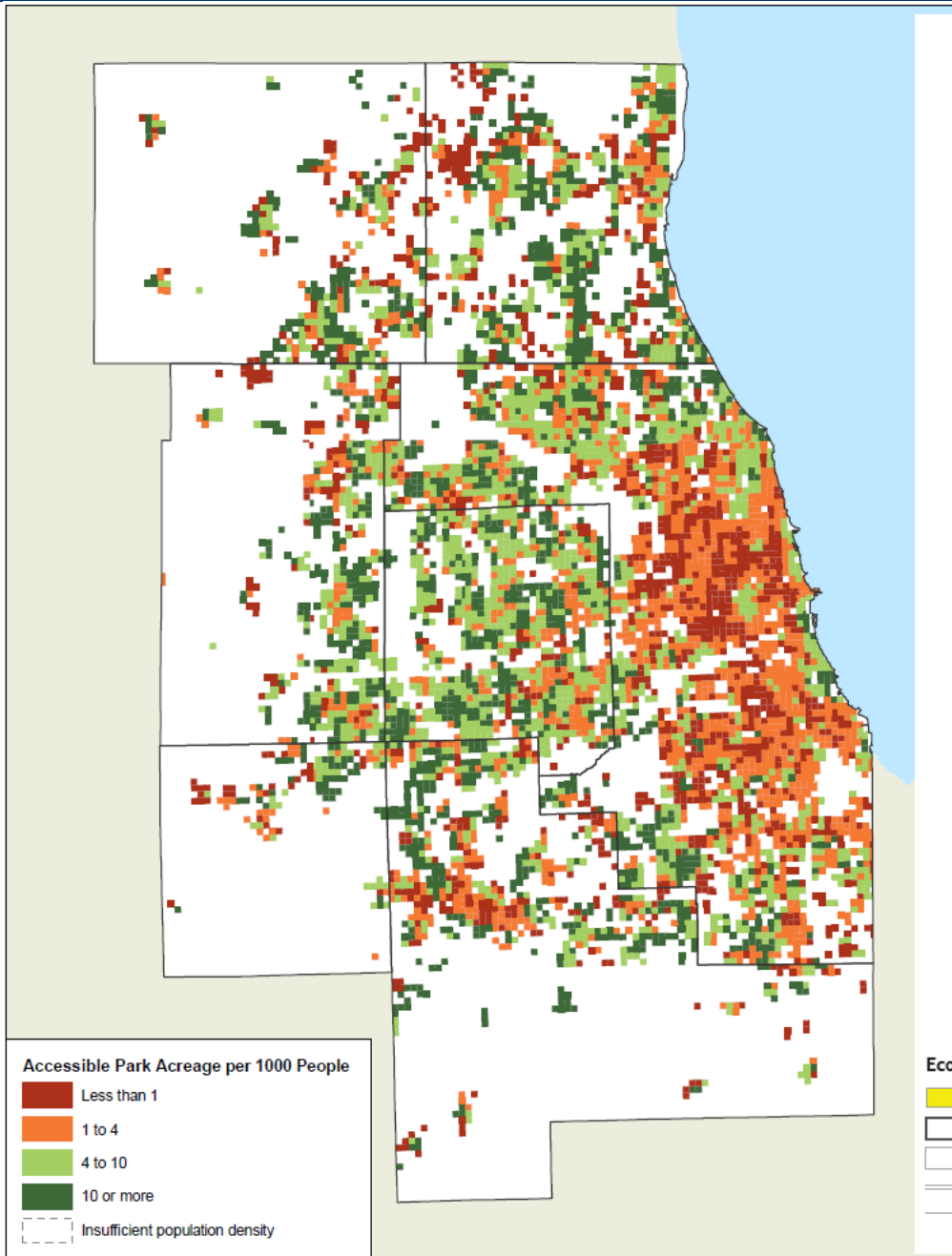
- Regional trails
- Walkability
- National highway freight network
- Freight planning areas
- Transit needs & opportunities
- Regionally significant projects
- Highway/roadway needs & opportunities

Environment

- Flooding susceptibility index
- Watershed integrity/water quality
- Water source protection
- Access to parks
- Conservation areas

Access to parks

Economically disconnected areas



Find a community

Aurora, 60502, etc.

View submarket legend



Browse by geography

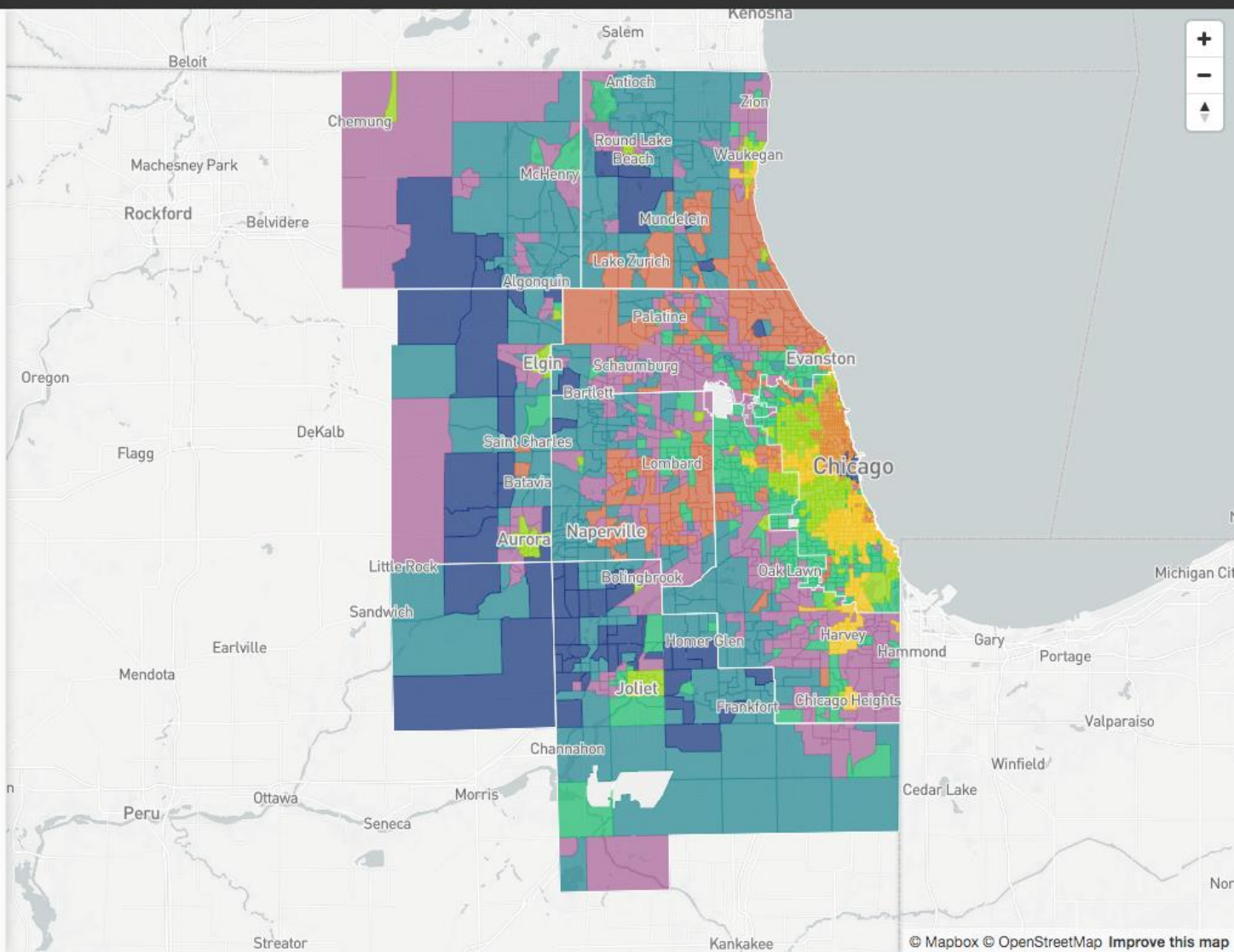
Check boxes to toggle outlines

Community area

Municipality

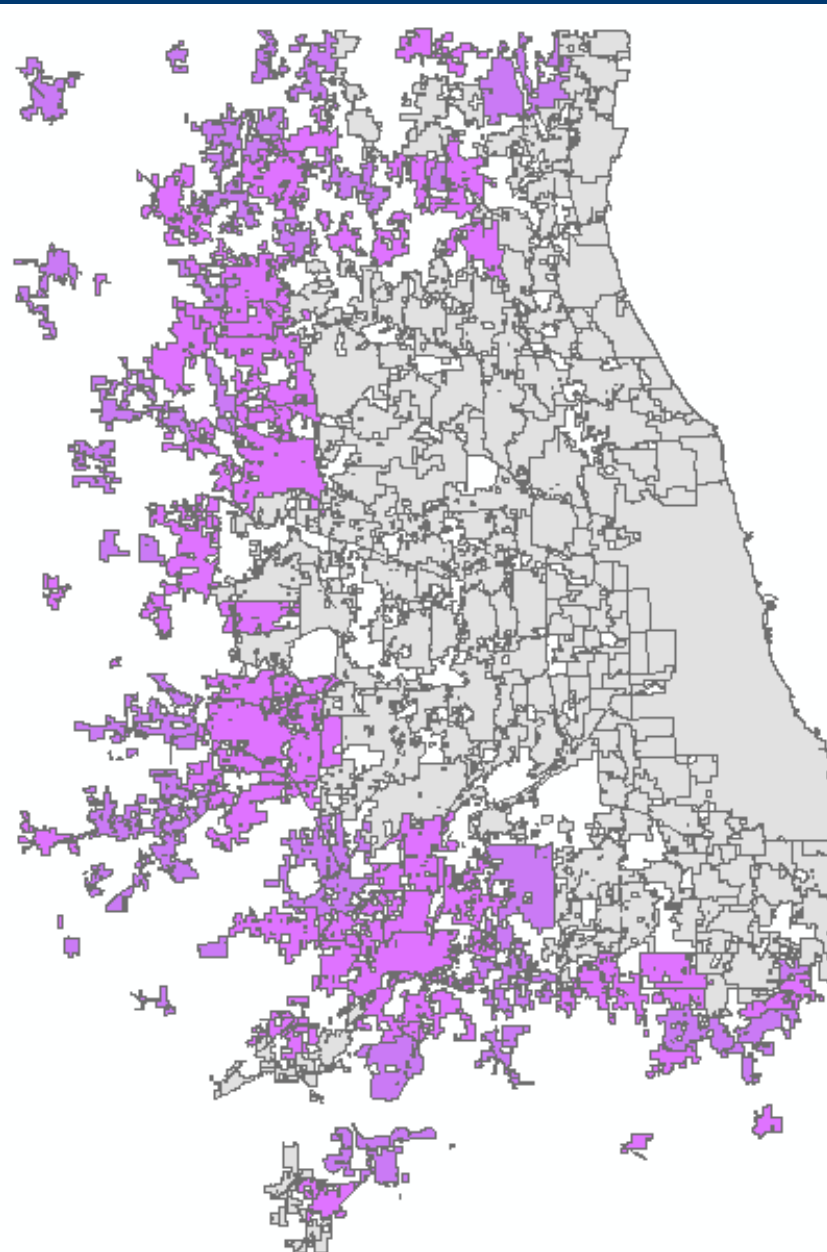
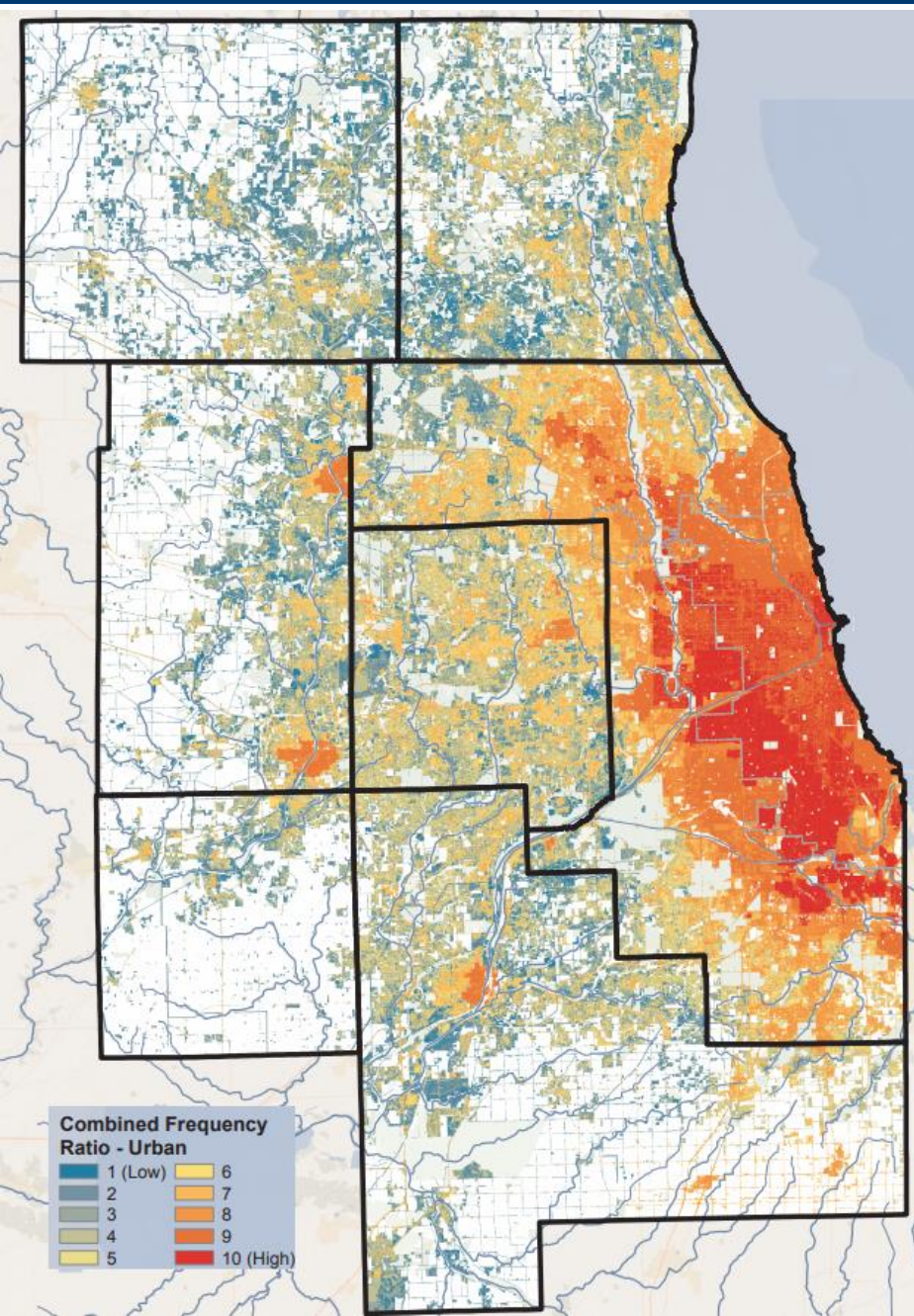
County

City of Chicago

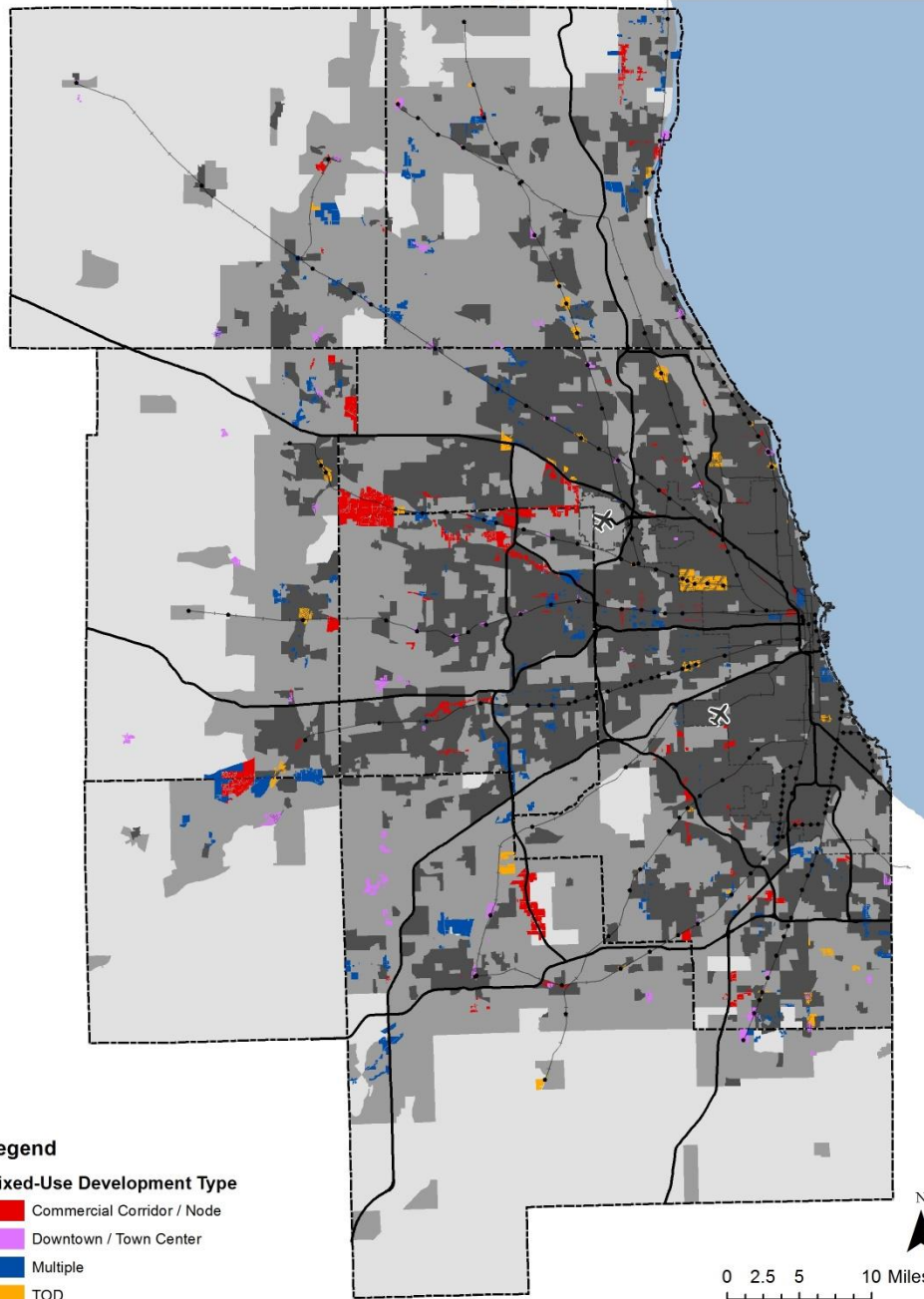


Flooding susceptibility index

Coordinated growth areas



LIMAs and Infill Supportiveness



Legend

Mixed-Use Development Type

- Commercial Corridor / Node
- Downtown / Town Center
- Multiple
- TOD

Next Steps

- Finalize layers for inclusion in plan, and figure out best method for digital presentation
- Determine how to include layer info in Community Data Snapshots, and develop more specific recommendations (post-plan)

ON TO 2050

Comments or questions?

Lindsay Bayley
lbayley@cmap.illinois.gov
312-386-8826