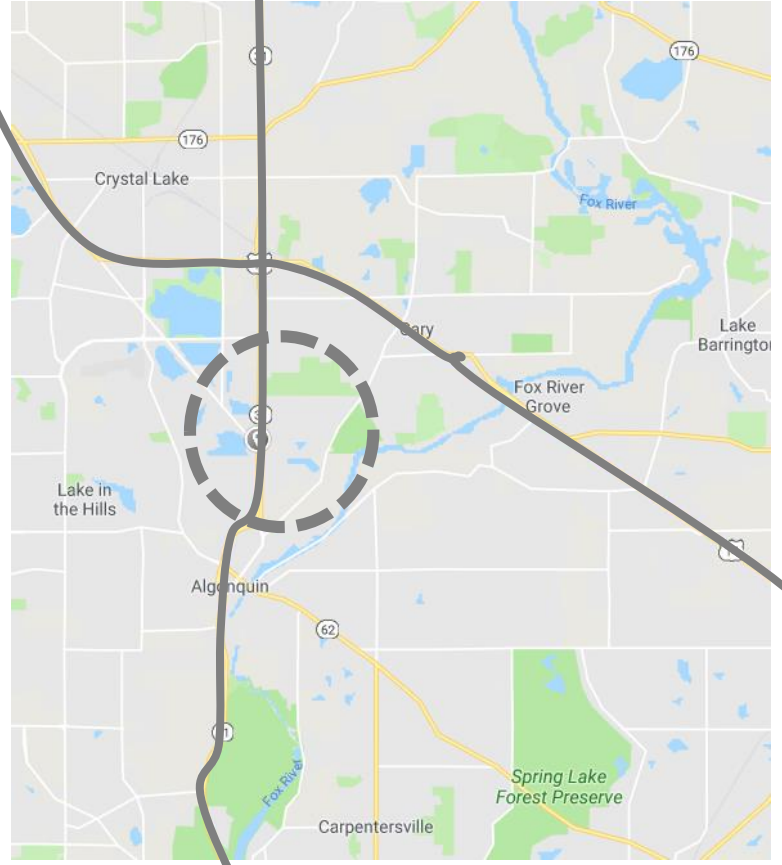


# Algonquin-Cary Subarea Plan

Environment and Natural Resources Committee

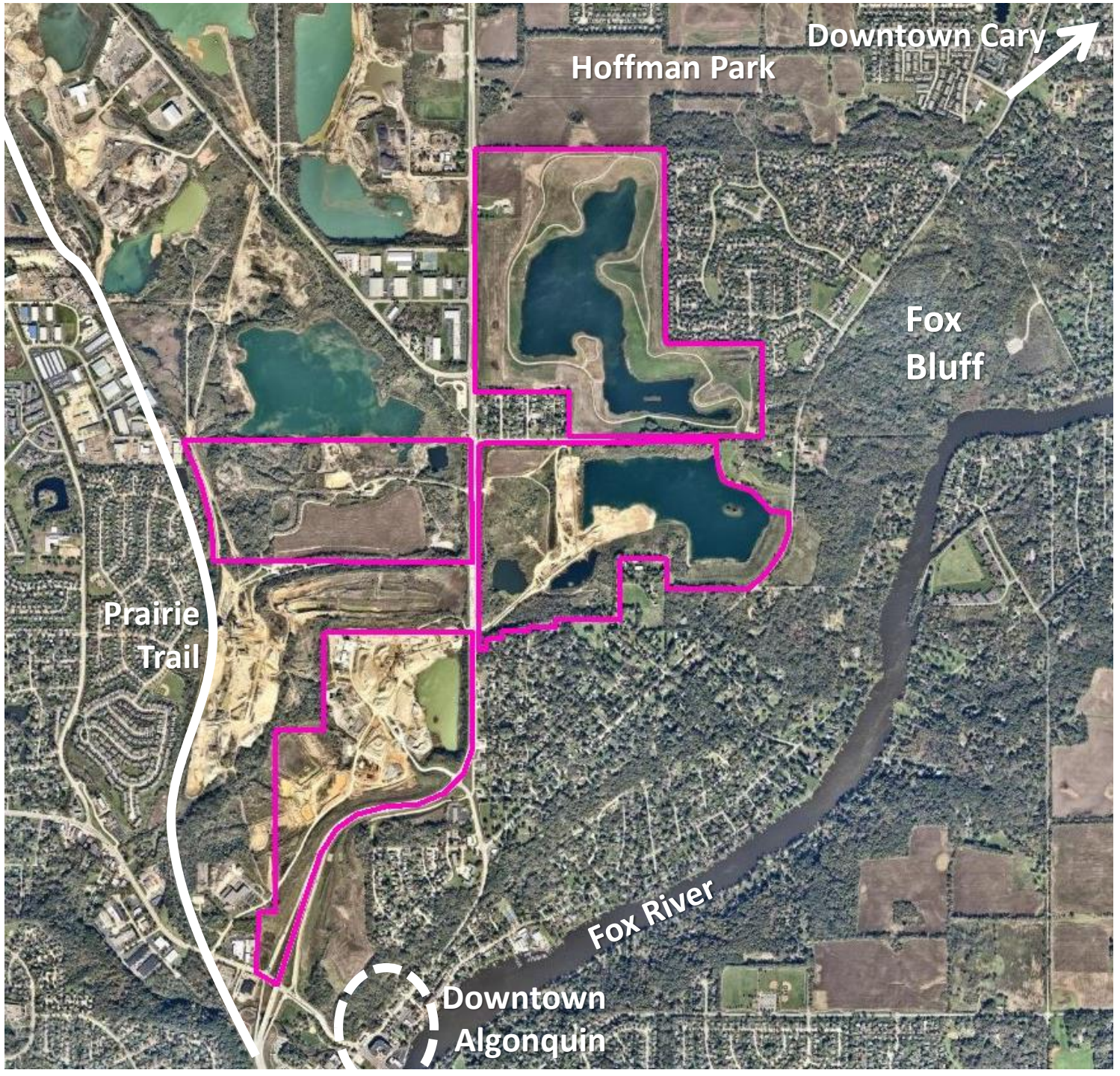
May 2, 2019

Route 31



Location

Route 14



Hoffman Park  
Downtown Cary

Fox Bluff

Prairie Trail

Downtown Algonquin

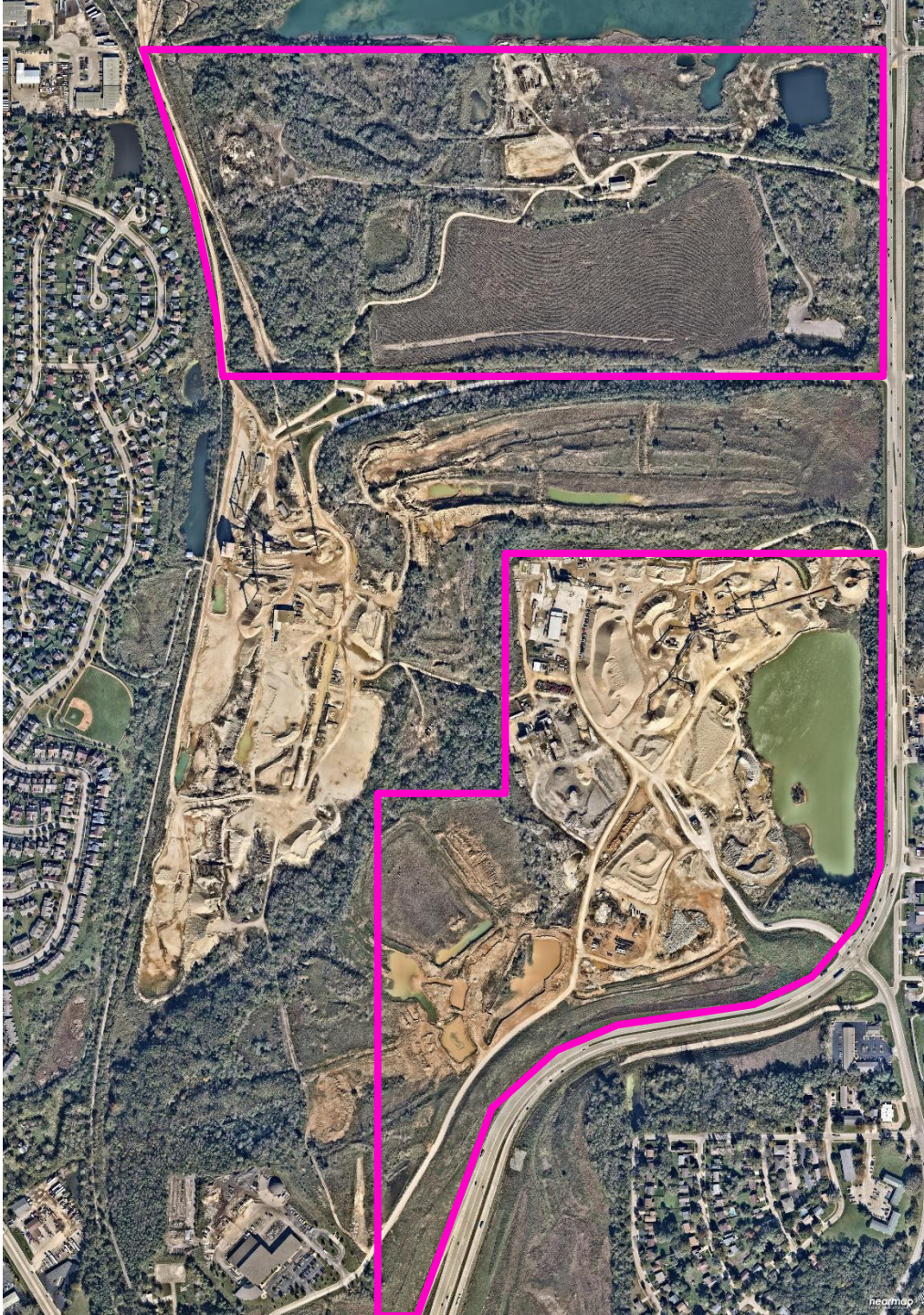
Fox River



Subarea 1, 252 acres



Subarea 2, 191 acres



Subarea 3 (North), 138 acres

Subarea 3 (South), 153 acres

# Timeline

Kickoff

April 2018

Existing conditions

April 2018 – April 2019

Visioning

April – May 2019 (\*workshop on 5/15)

Plan development

May – October 2019

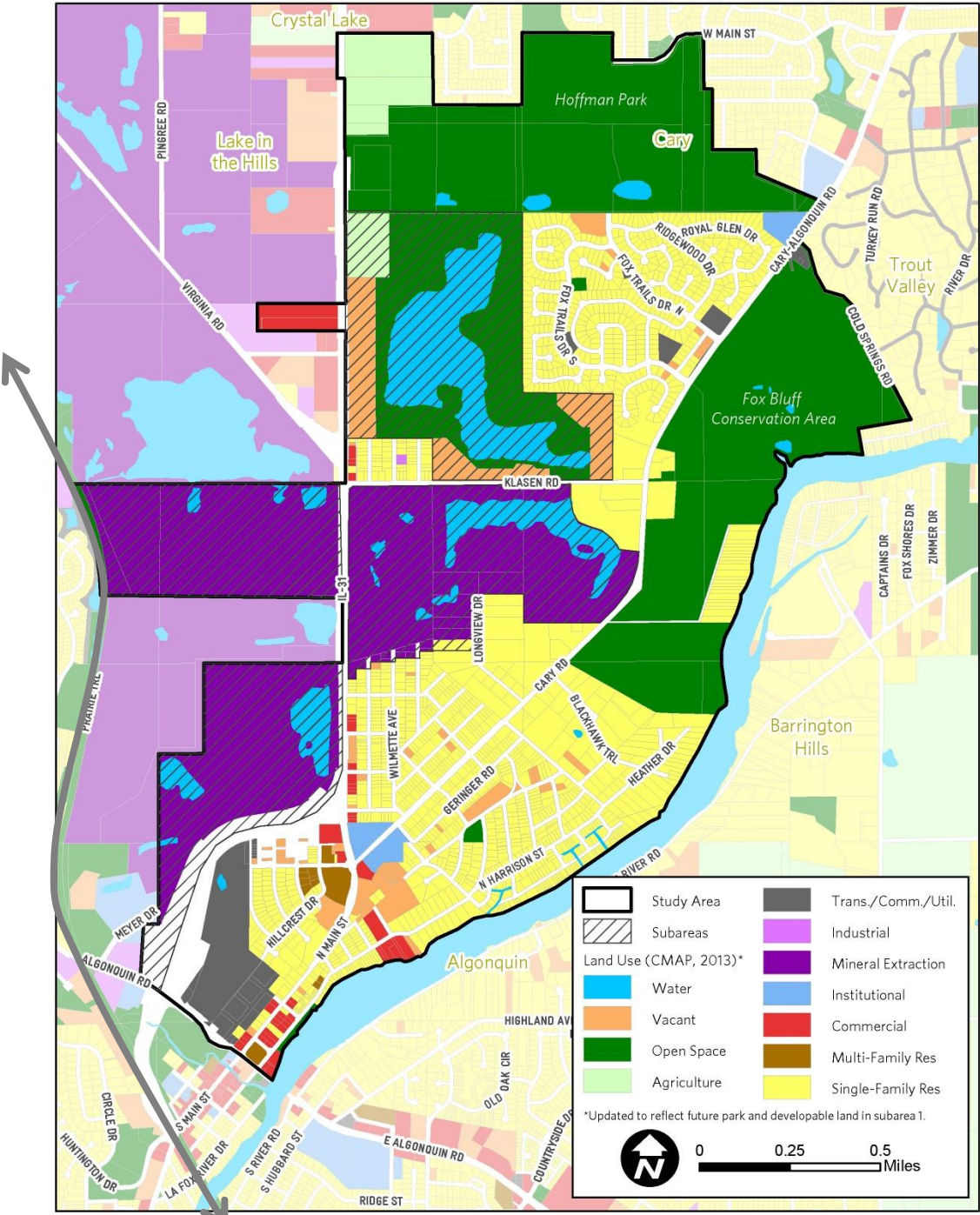
Adoption

End of 2019

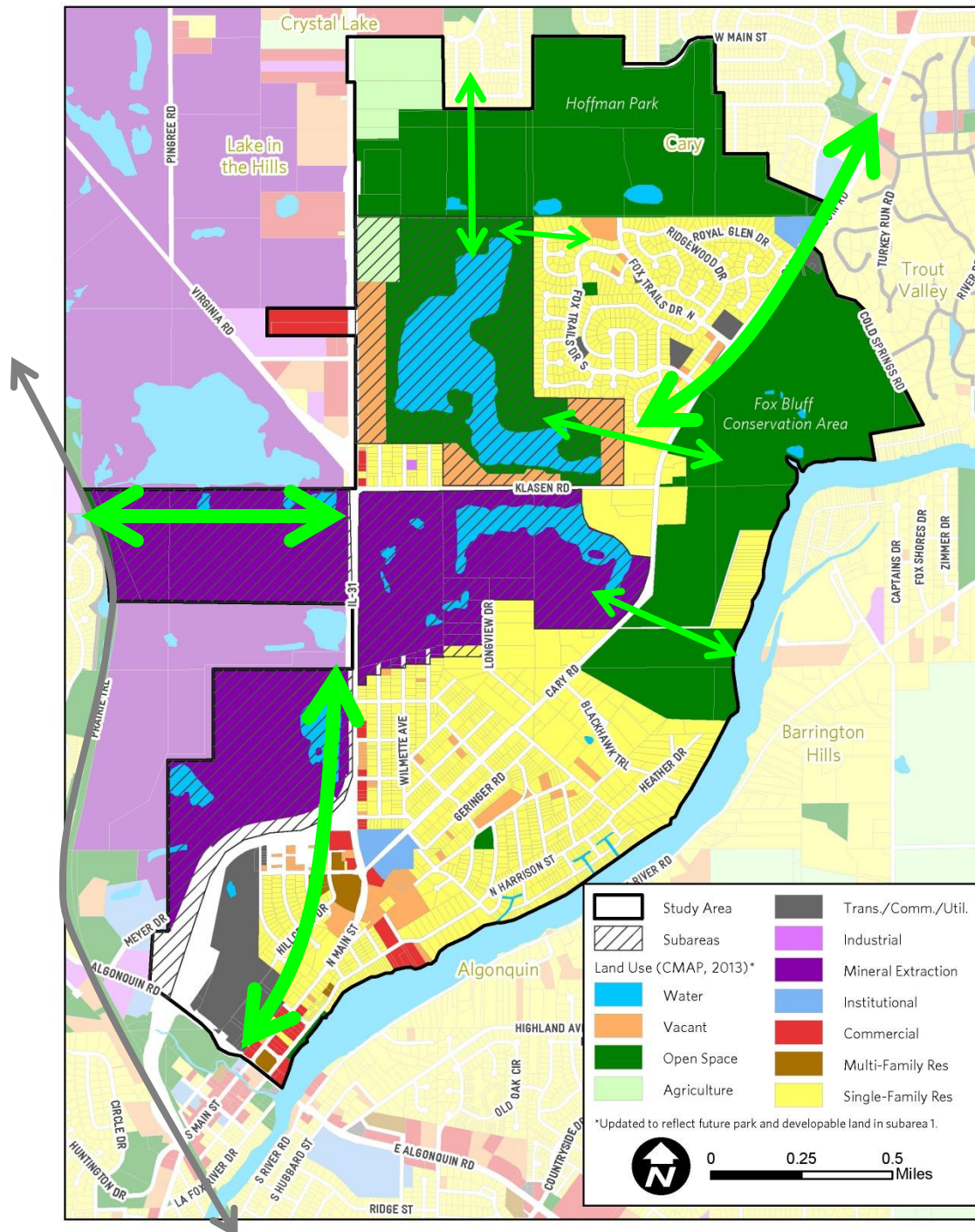
# Goals

- Pursue coordinated redevelopment
- Identify highest and best uses for the sites
- Build on recent planning
- Engage community to develop vision

# Land Use



# Connections





# Natural Resources





New park in Cary



Park concept plan  
courtesy of Hitchcock Design



Potential development area

Park concept plan  
courtesy of Hitchcock Design

<https://cmap.is/algonquincary> (*\*online survey*)  
Kate Evasic  
kevasic@cmap.illinois.gov