

Lake County Sustainable Food System Project

CMAP Land Use Committee

May 15, 2013



Chicago Metropolitan
Agency for Planning



Outline

- Background and project need
- Sustainable local food policy systems assessment
 - Economic opportunity of local food system
 - Local food production and environmental considerations
- Liberty Prairie Reserve master planning
 - Aligning land preservation goals with biological farming practices

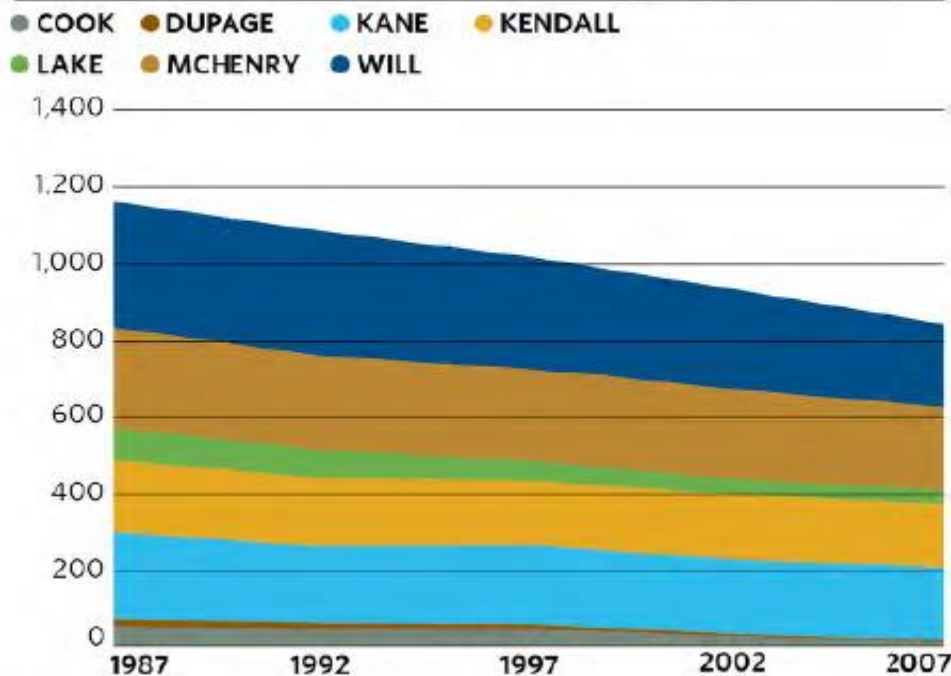


Lake County Farming – a Decade of Change

- 2001 Lake County commissioned American Farmland Trust Report: “On Thin Soil”
 - Lake County is one of the fastest growing counties nationally
 - 1,500 acres a year are being developed, much of that is farmland
 - Because farmland has high development value much of it has been lost to development and this trend will continue
 - 18,000 acres of farmland lost to development between 1987 and 2000
- Conclusion: Farming future in question - large grain farming is leaving Lake County

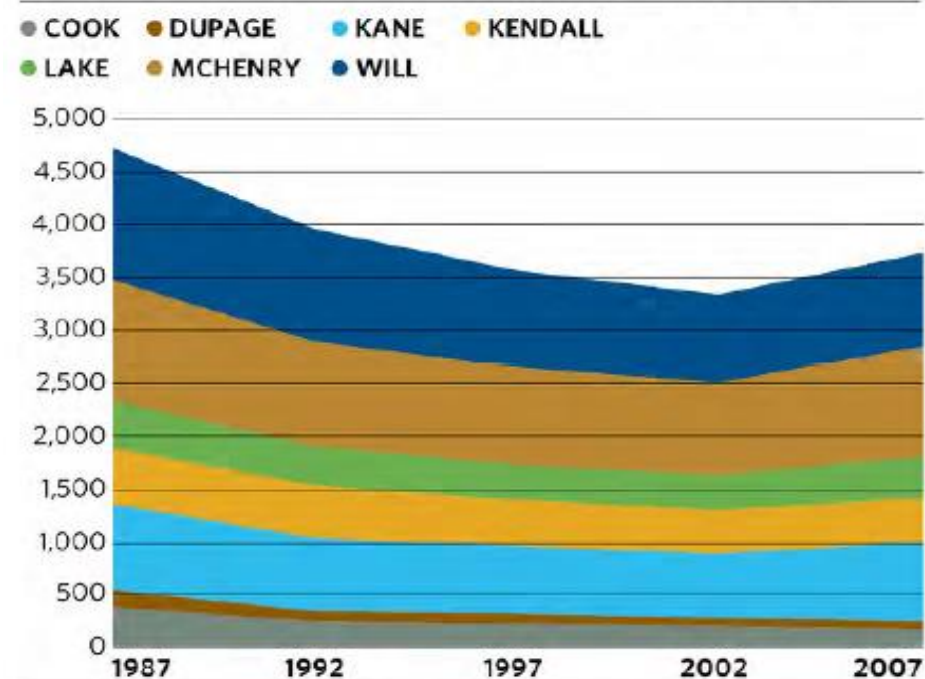
Inverse Trends: Acres of Farmland and Number of Farms

Farmland in northeastern Illinois, in thousands of acres



Source: U.S. Department of Agriculture, National Agricultural Statistics Services, Census of Agriculture, County Profile, 1987, 1992, 1997, 2002, 2007.

Number of farms in northeastern Illinois, by county, 1987-2007



Source: U.S. Department of Agriculture, National Agricultural Statistics Services, Census of Agriculture, County Profile, 1987, 1992, 1997, 2002, 2007.

Scale and Methods of Agriculture



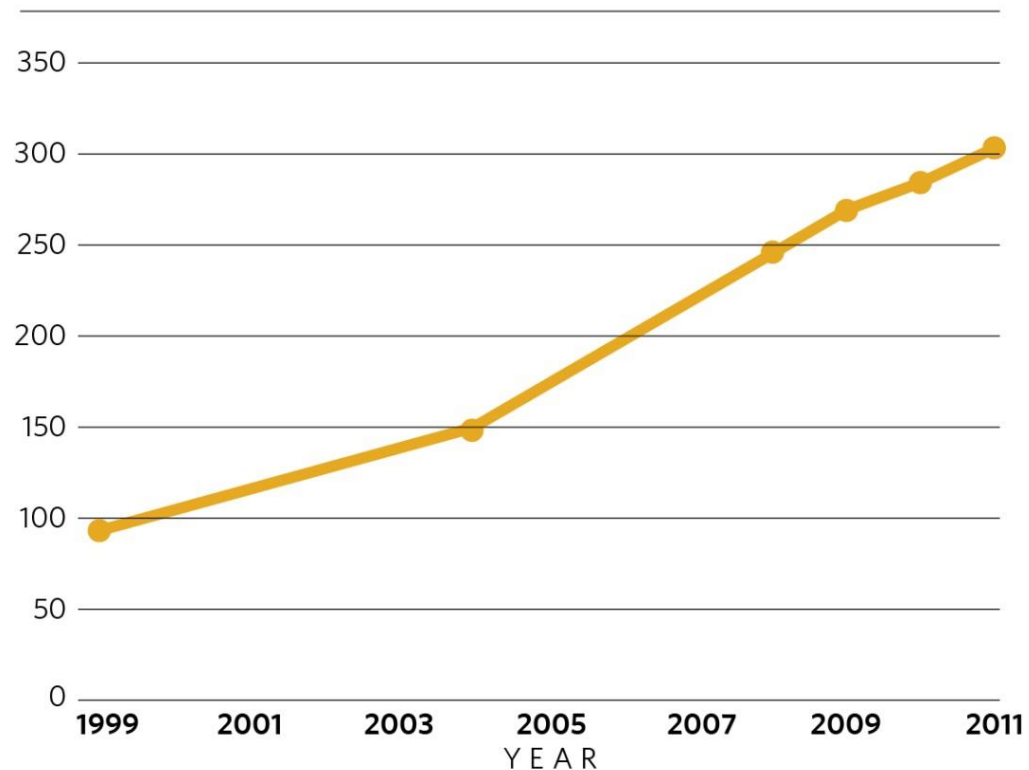
A photograph of a farm. In the foreground, there is a large field of young vegetable plants, likely lettuce or similar leafy greens, growing in rows. The soil is dark and appears to be recently tilled. In the middle ground, there is a large, two-story white house with a gabled roof and several windows. To the left of the white house, there is a smaller, single-story building with a porch. To the right of the white house, there is a red barn. The background is filled with tall, green trees. The sky is overcast.

Smaller parcels work well for local food growers

Increasing Demand for Local Food


- Local and sustainably produced food is a growing trend amongst restaurants
- Supermarkets are responding to consumer demand with increasing offerings of locally grown food
- Direct-to-consumer sales are increasing rapidly

Number of farmers markets in Illinois




Source: Illinois Department of Agriculture.

Sweet Taste



Eat Local Food



Kootenay
Co-op
Since 1973

Full Root




Eat Local Food




Kootenay
Co-op
Since 1973

Local Food



Eat Local Food



Kootenay
Co-op
Since 1973



Basic Financial Picture

	Lake County Fresh Produce Operation (20 acres) ^a	Lake County Corn & Bean Operation
Sales/Acre	\$20,000 - \$23,000	\$810 ^b
Non Labor Costs/Acre	\$6,000 - \$11,000	\$424 ^c
Land Costs/Acre	\$250	\$150
Labor Costs/Acre	\$7,000 - \$9,500	\$10 - \$14 ^c
Operator Return/Acre	\$7,000 - \$12,000	\$224

^a Ranges from last 5 years

^b Acreage is 50% Beans, 50% Corn; Corn \$5.00/bushel, Beans \$12.00/bushel; Corn 190 bu/acre, Beans 52bu/acre; \$23/acre government payments

^c University of Illinois Farm Business 2010 Crop Budgets

Source: Michael Sands, Ph.D., Senior Associate
Liberty Prairie Foundation

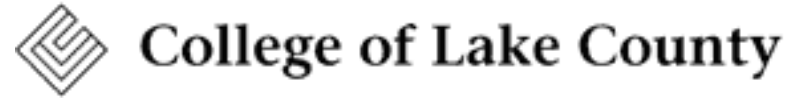
Economic Potential of Local Food



Lake County Sustainable Local Food System Assessment



Project Steering Committee





Sustainable Local Food System Benefits

- Environmental benefits through better land management
- Public health and nutritional benefits by increasing availability of fresh food
- Economic benefits by generating local jobs, supporting the greater community, and creating market differentiation (for restaurants and markets)



What We Did: Countywide Assessment

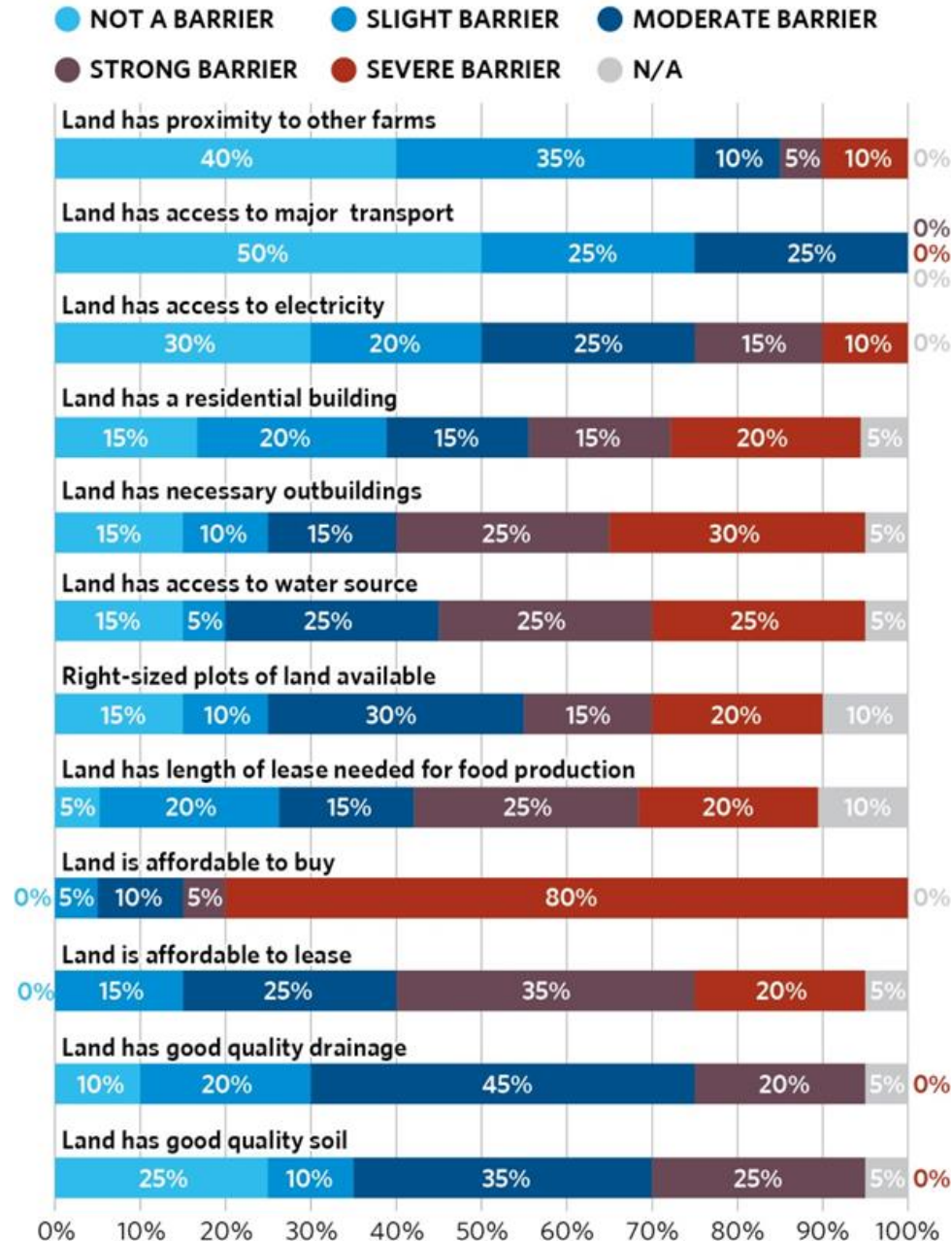
- Research into data and trends, producing educational materials
- Survey of agricultural stakeholders to identify barriers
- Review of County ordinances related to agriculture



Survey Findings of Major Barriers:

- Long-term access to farmland (cost, lease terms)
- Infrastructure needed to grow and meet demand
- Demand for local food exists, but isn't met by supply and distribution system
- Market forces and “scaling up” were most severe barriers
- County regulations were not perceived as significant barriers

Sample response from Farmers Survey:





Ordinance Review and Conclusions

- Review of Lake County UDO and other regulatory documents, interviews with County staff
- Examined Zoning Regulations, Public Health and Food Safety Regulations, and Environmental Regulations
- Found Lake County's regulations are not very prohibitive, and ordinances are modified as public / market demands it



Ordinance Recommendations

- While County policies are not currently creating barriers, recommendations to ***promote*** local food viability:
 - Zoning Regulations: Enable sustainable farming on non-exempt land (less than 4.56 acres)
 - Public Health and Food Safety: Interpret state regulations to suit the local scale and continue interdepartmental collaboration
 - Environmental Regulations: Anticipate how a potential increase in farming operations will impact land and water health



Food Systems Report:

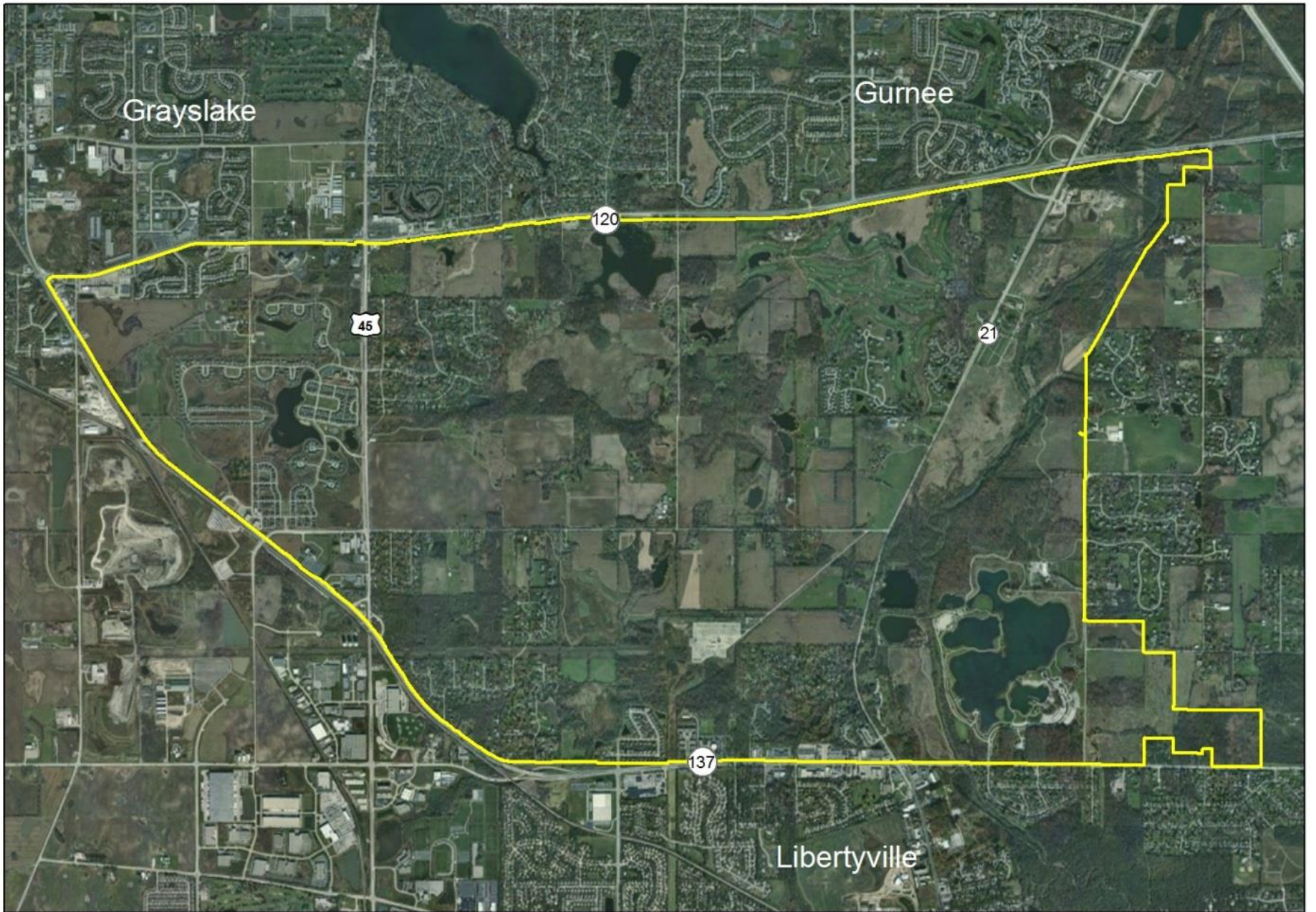
Main Recommendation Themes

- Recognize food production as a positive, legitimate, and economically valuable land use
 - Money spent on locally-grown food creates a multiplier effect, internally circulating dollars 1.4 - 2.6 times within the local economy
- Make farmland and resources more accessible to sustainable growers
 - Investigate providing public lands for food production
 - Integrate best practices into farm lease terms
 - Explore strategies for supporting infrastructure needs
- Ensure that increased agricultural production is in tandem with natural resource management
 - Enable composting for local food production
 - Align water management goals with local food production activities

Liberty Prairie Reserve Master Plan



Liberty Prairie Reserve Boundary



0 0.5 1 2 Miles

1 inch = 2,750 feet

Liberty Prairie Reserve

- Original Master Plan adopted in 1991
- New 2013 Master Plan seeking adoption





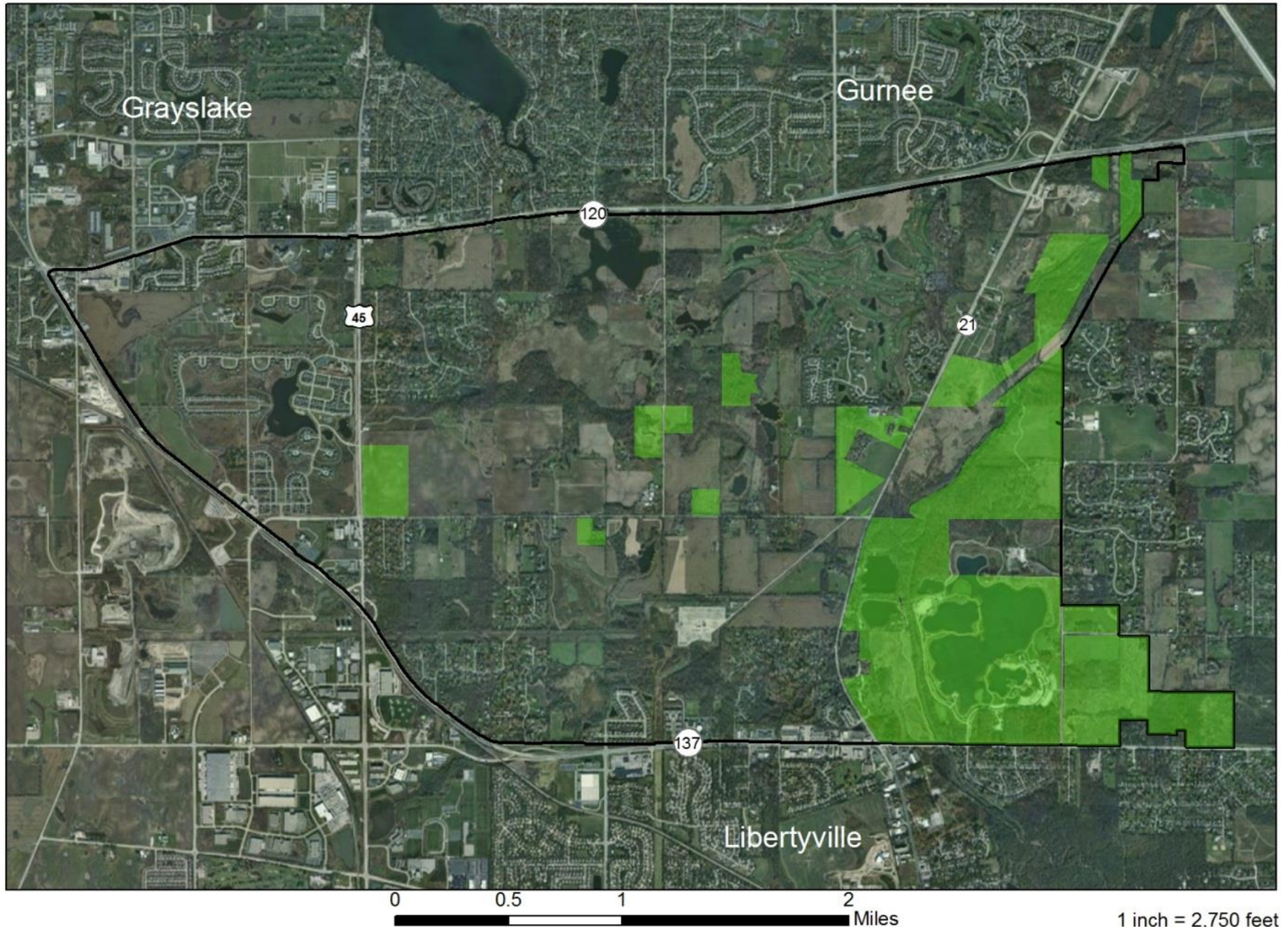
Liberty Prairie Reserve

Results of 1991 Master Plan

- Over 3,400 acres of natural areas and farmland legally protected on public and private lands through 102 separate land transactions
- Over 18 miles of public trails
- Water quality has improved and natural areas are actively managed
- Three Illinois State Nature Preserves have been established on both public and private lands
- Farming continues on 800 acres of land, including 100+ acres of sustainable, local organic food production

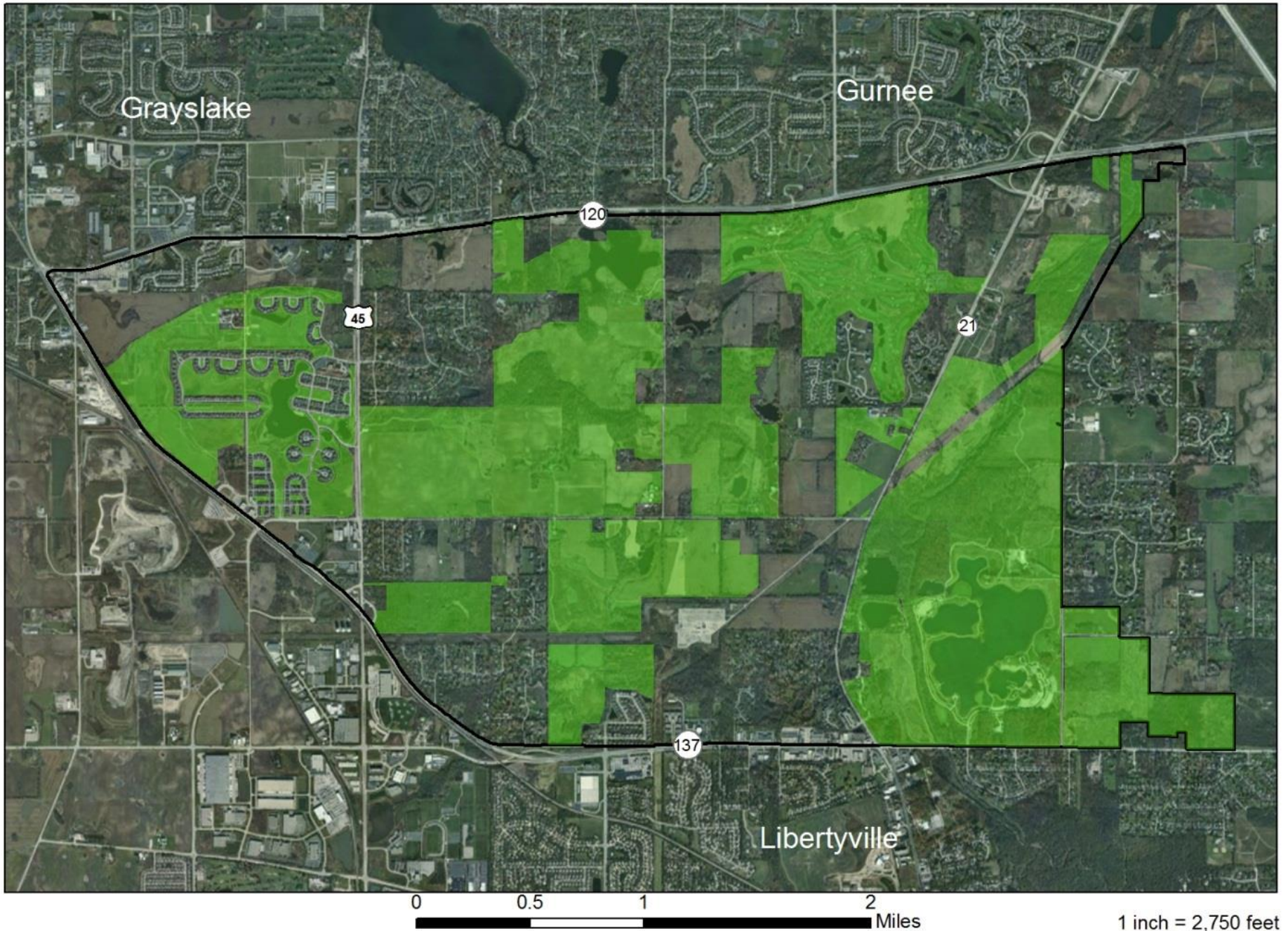
Liberty Prairie Reserve - History of Land Protection

1987

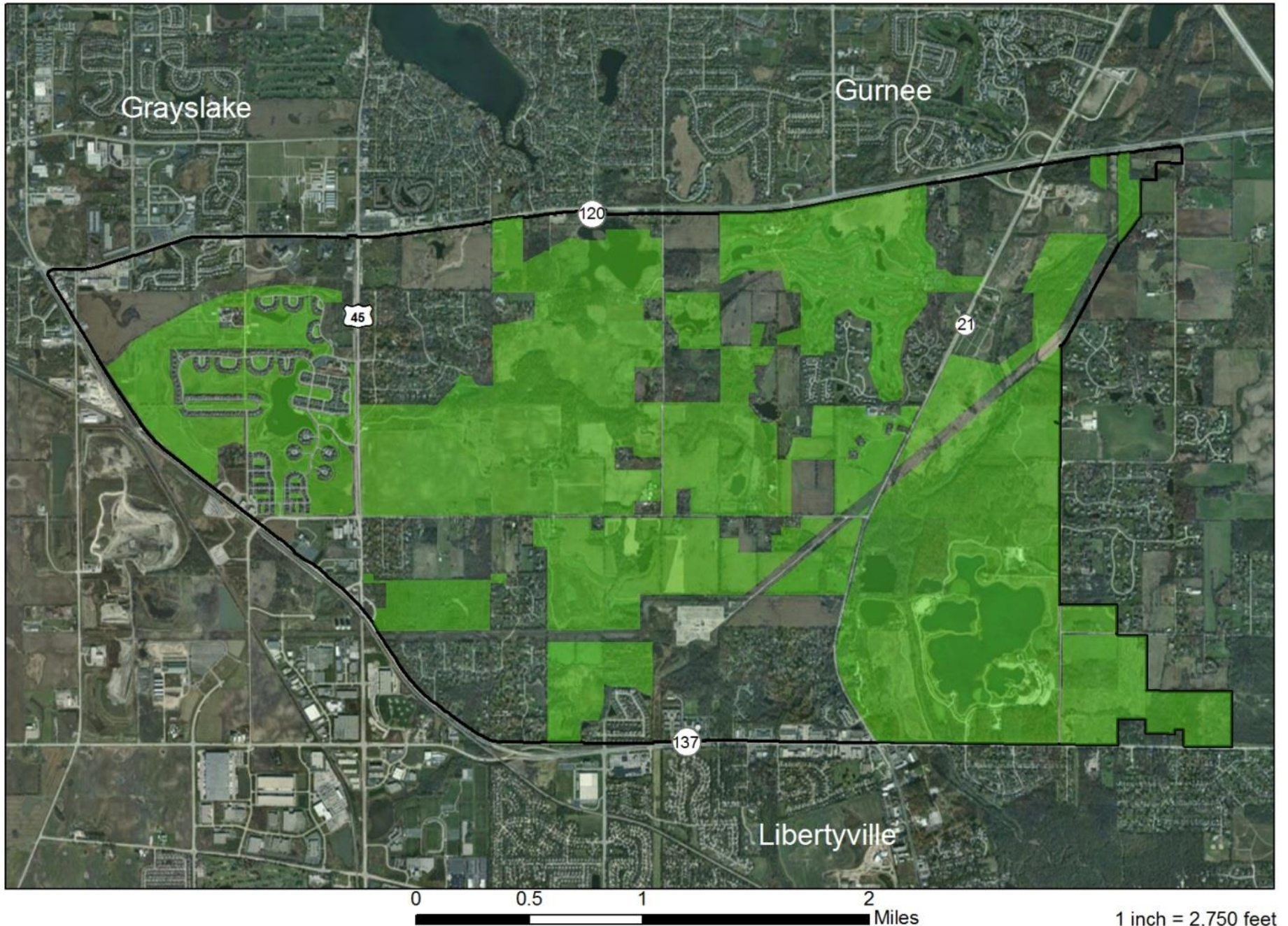


Liberty Prairie Reserve - History of Land Protection

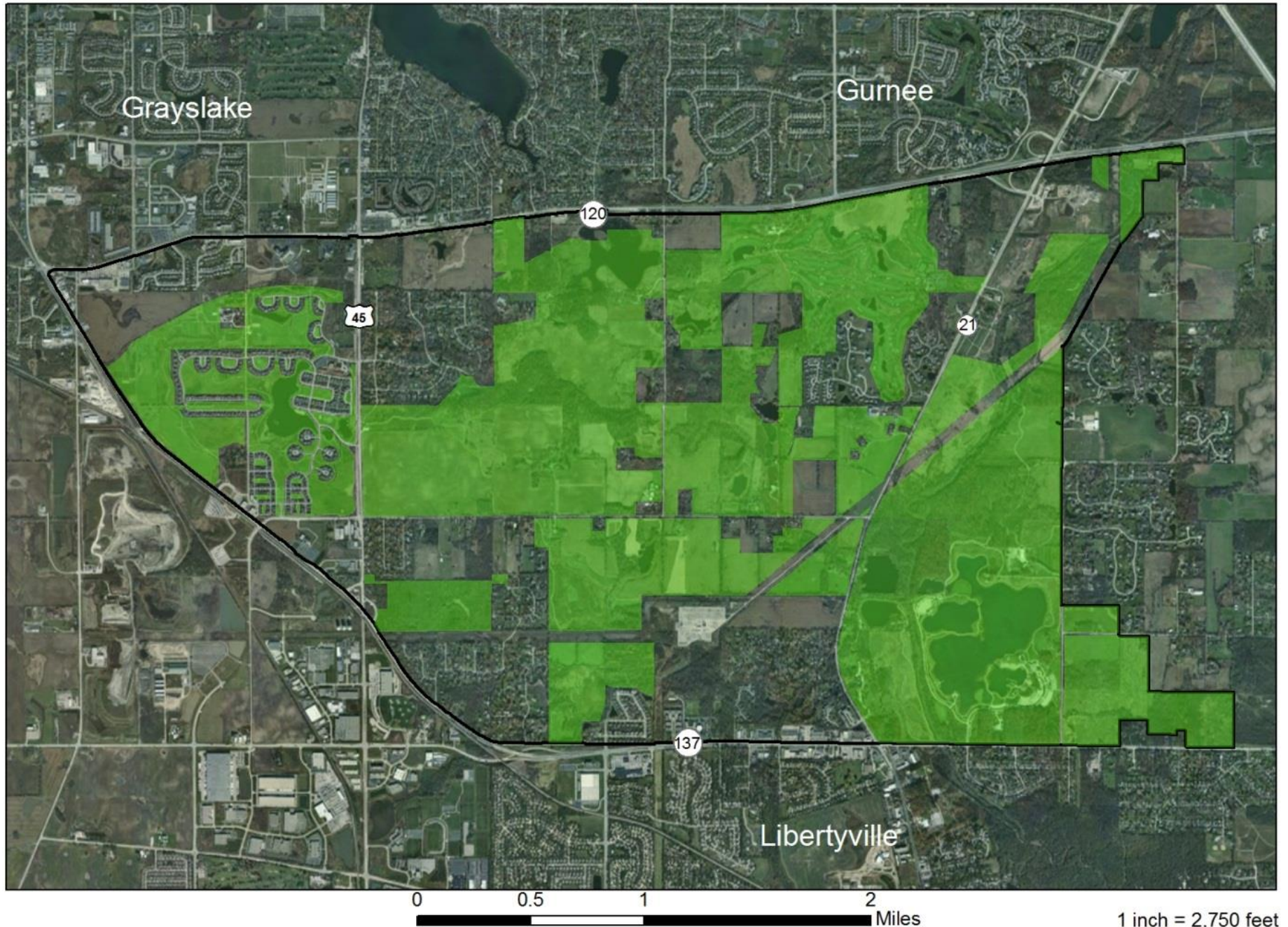
1997



Liberty Prairie Reserve - History of Land Protection 2007



Liberty Prairie Reserve - History of Land Protection 2013



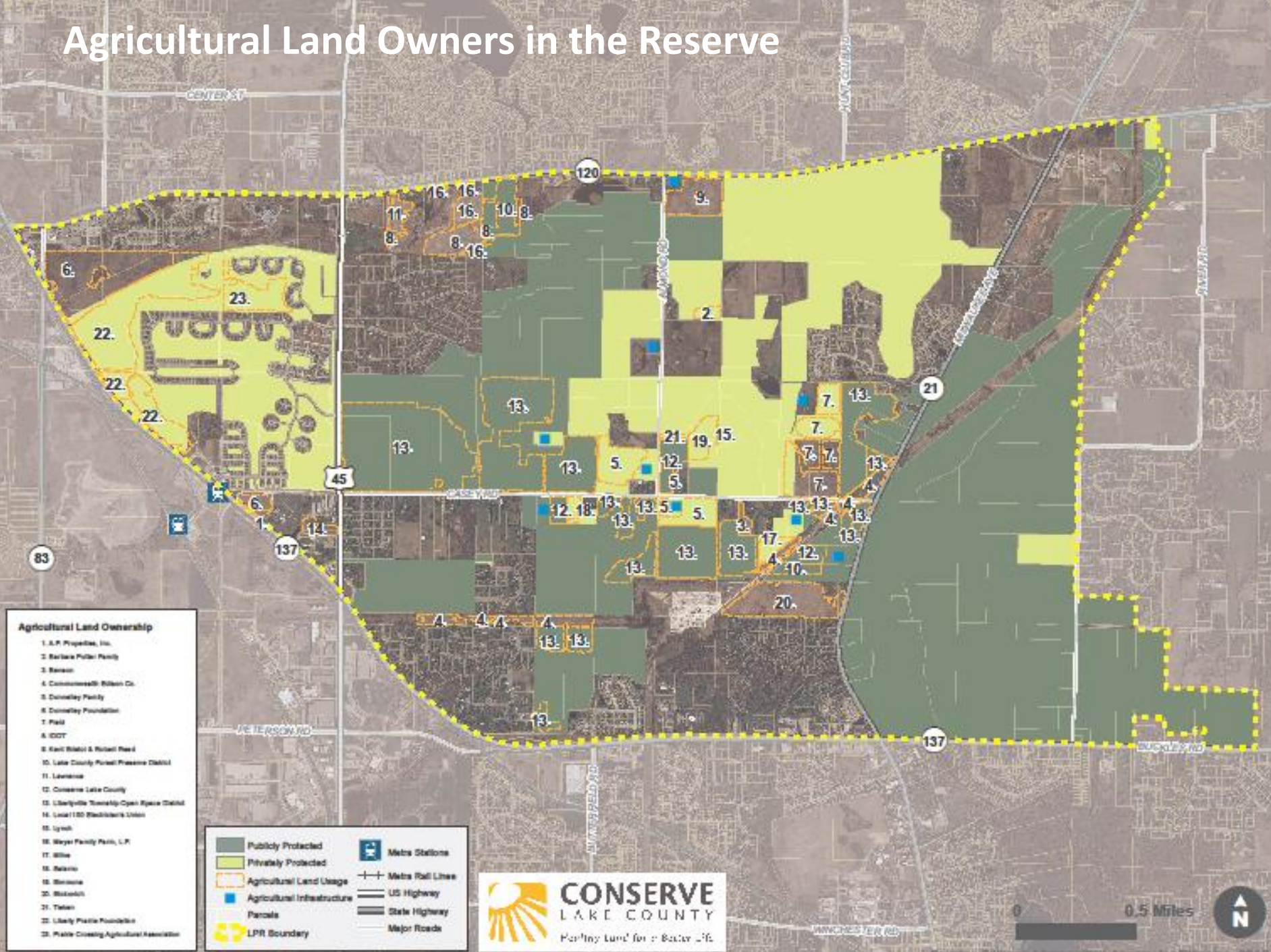


Liberty Prairie Reserve

2013 Master Plan Update – Stakeholders

- Conserve Lake County
- Chicago Metropolitan Agency for Planning
- Lake County Forest Preserve District
- Lake County Departments of Planning, Transportation, and Stormwater Management
- Liberty Prairie Foundation
- Libertyville Township
- Illinois Department of Natural Resources
- Illinois Nature Preserves Commission
- Openlands
- Private landowners

Agricultural Land Owners in the Reserve



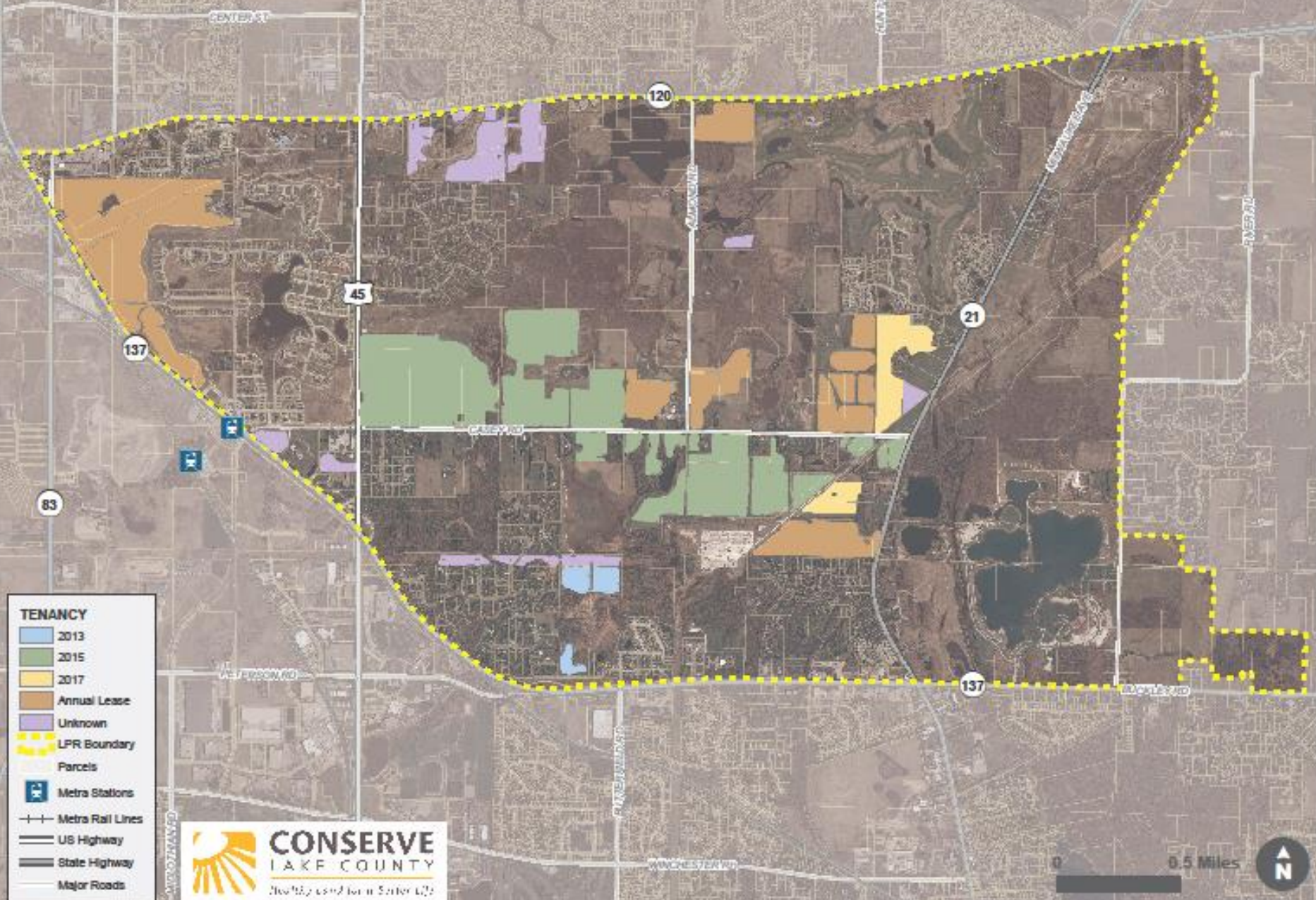
- Agricultural Land Ownership**
1. L.P. Properties, Inc.
 2. Barlow Public Party
 3. Barlow
 4. Commonwealth Wilson Co.
 5. Donnelly Family
 6. Donnelly Foundation
 7. Field
 8. SOOT
 9. Kent Wilson & Robert Reed
 10. Lake County Forest Preserve District
 11. Lawrence
 12. Conserve Lake County
 13. Libertyville Township Open Space District
 14. Local 180 Electrician's Union
 15. Lynch
 16. Mayer Family Park, L.P.
 17. Silve
 18. Barlow
 19. Barlow
 20. Blotnick
 21. Tolson
 22. Liberty Prairie Foundation
 23. Public Crossing Agricultural Association

	Publicly Protected		Metro Stations
	Privately Protected		Metro Rail Lines
	Agricultural Land Usage		US Highway
	Agricultural Infrastructure		State Highway
	Parcels		Major Roads
	LPR Boundary		

CONSERVE LAKE COUNTY
Protecting Land for a Better Life

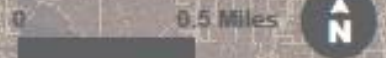
0 0.5 Miles

Agricultural Land Tenancy in the Reserve



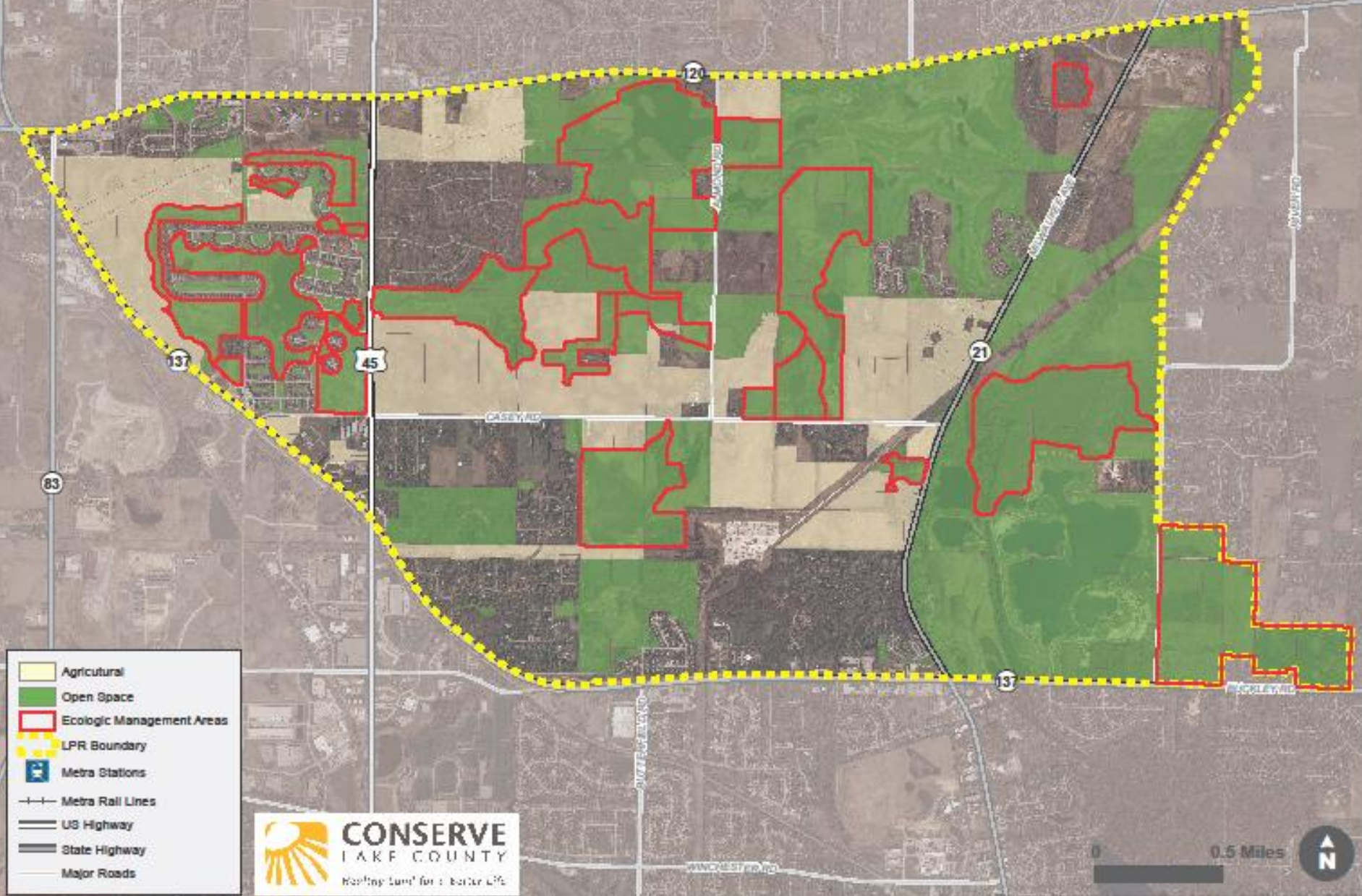
TENANCY

- 2013
- 2015
- 2017
- Annual Lease
- Unknown
- LPR Boundary
- Parcels
- Metra Stations
- Metra Rail Lines
- US Highway
- State Highway
- Major Roads



Source: Chicago Metropolitan Agency for Planning, 2012

Agricultural Land, Open Space, and Land Management Areas in the Reserve



- Agricultural
- Open Space
- Ecologic Management Areas
- LPR Boundary
- Metra Stations
- Metra Rail Lines
- US Highway
- State Highway
- Major Roads



0 0.5 Miles

Source: Chicago Metropolitan Agency for Planning, 2012



Liberty Prairie Reserve

2013 Master Plan – Key Recommendations

- Expand Core Habitat
- Support Ecological Management and Restoration
- Preserve More Open Space
- Transition Agriculture to Biologically-based Practices
- Improve Public Access
- Establish A Liberty Prairie Reserve Planning Council
- Improve Public Access from North and South
- Complete improvements on State roads around the Reserve
- Implement Route 53 Blue Ribbon Advisory Council Recommendations

Cover Cropping: Biological Farming Practice



Small-scale Sustainable Farming



Restoring Core Habitats





Next Steps

- Master Plan adoption by the County Forest Preserve in June
- Food Systems Report support from County Board
- Implementation of recommendations



Questions or comments?

www.cmap.illinois.gov/lake-county

Jessica Simoncelli
Associate, CMAP
jsimoncelli@cmap.illinois.gov
(312) 386-8631