

WILL COUNTY

DOT



# Will County 2020-2025 TIP

*“Build Will” to Will Connects and beyond*  
August 2, 2019

Christina Kupkowski, PE  
Phase I Project Manager  
Transportation Planner

# Agenda

- County Info
- Build Will
- *Will Connects 2040*
- Transportation Plans

# Will County Information

## General Overview

- 837 square miles
- Population: 687,727
- Transportation network
- Intermodal Facilities
  - 3 online, 1 in planning
- Rural vs. Urban/Suburban

## Division of Transportation

- 58 County Highways
- 256 miles
- 121 bridges
- 4 Maintenance Facilities
- DOT Campus
- Staff

# Build Will Program

- \$100 million Bond initiative
- Passed in May 2008
- 60 projects – initially
- Added 12 projects in 2012

# Build Will Program

- Success to date:
  - Largest Overlay Program in History
    - 120 center-line miles
    - 39 County Highways
  - Constructed:
    - 1 New Structure
    - 0.25 miles of Noise walls
- Success to date (cont.):
  - Reconstructed:
    - 14 center-line miles on 10 County Highways
    - 15 Bridges (including 1 Township)
    - 22 Intersections
  - Completed:
    - 2 Value Engineering studies
    - 2 Phase 1 Studies
  - Total Combined Investment:  
**\$350 million**

# Build Will Program

## Under Construction

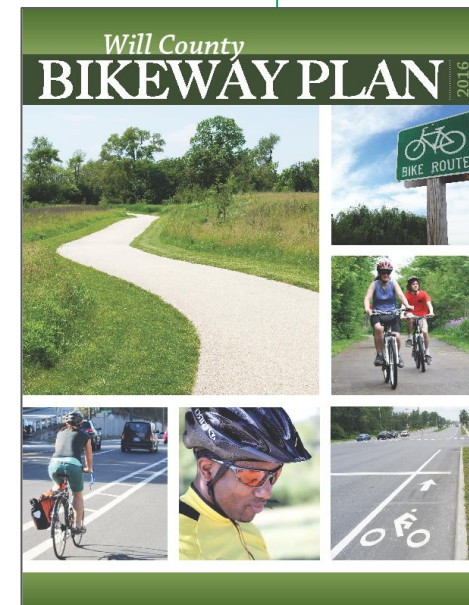
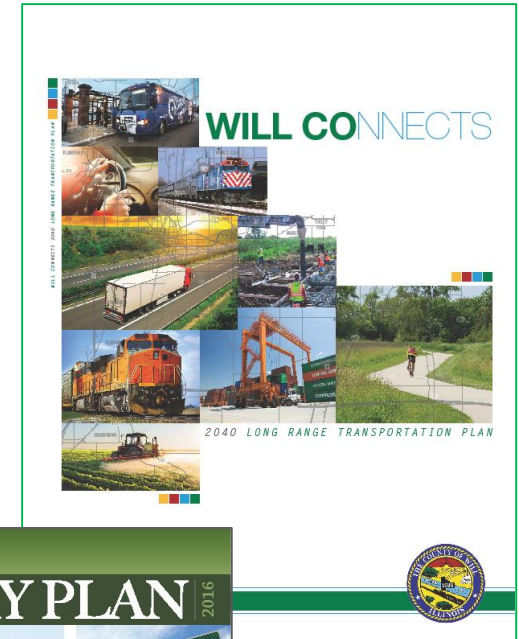
- Weber Road:
  - 135<sup>th</sup> Street to 119<sup>th</sup> Street
  - Includes I-55 Interchange
- Arsenal-Manhattan Road:
  - Baseline Road to Brandon Road
- Briggs Street at Mills Road

## Under Design

- Awaiting completion of ROW
  - 2 Intersections
  - 2 segments of road
- In Design
  - 1 Roadway project
  - 1 Bridge
- 3 Road segments just starting

# Will Connects 2040

- Adopted by Board in March 2017
- 2 fiscally constrained programs
  - With the Illiana
  - Without the Illiana
- Adopted 2016 Countywide Bikeway Plan as appendix



# 2040 Constrained Projects List (with Illiana Construction)

Investment Priority	Location	Improvement	2020-2025	2026-2030	2031-2035	2036-2040
<b>\$ Available for Projects</b>			<b>\$129M</b>	<b>\$102M</b>	<b>\$97M</b>	<b>\$91M</b>
Gougar Road (1)	Laraway Road to US 6	Widen to 4 lanes		\$76.4 Million		
Gougar Road (2)	US 52 to Laraway Road	New 4-lane roadway				\$13M*
Laraway Road (2)	US 52 to Harlem Avenue	Widen to 4 lanes		\$235.2 Million		
I-80	Briggs Street Interchange	Study to Upgrade	\$2M			
I-80	Chicago Street (US52/IL 53) Interchange	Study to Upgrade	\$2M			
Countywide Transit Study	Countywide	Study	\$406K			
Countywide Freight Study	Countywide	Study	\$697K			
Countywide ITS Study	Countywide	Study	\$290K			
Briggs Street	Maple Rd to Division St	Reconstruction	\$11.0M			
Center Road	N. Peotone Rd to Steger Rd	Reconstruction				\$42.6M
Division Street	Briggs Street to Cedar Road	Reconstruction		\$13.1M		
Manhattan-Monee Road	I-57 to Center Road	Reconstruction			\$19.8M	

Current TIP

\*Allows County to start but not enough \$ to complete project





# 2040 Constrained Projects List (without Illiana Construction)

Investment Priority	Location	Improvement	2020-2025	2026-2030	2031-2035	2036-2040
<b>\$ Available for Projects</b>			<b>\$129M</b>	<b>\$102M</b>	<b>\$97M</b>	<b>\$91M</b>
Laraway Road (2)	US 52 to Harlem Avenue	Widen to 4 lanes	<b>Current TIP</b>	<b>\$254.8 Million</b>		
Manhattan-Monee Rd (2)	Center Rd to I-57	Widen to 4 lanes		<b>\$63.3 Million*</b>		
Manhattan-Monee Rd (1)	Ridgeland Ave to Drecksler Rd	New 2-lane road		\$2M		
I-80	Briggs Street Interchange	Study to Upgrade		\$2M		
I-80	Chicago Street (US52/IL 53) Interchange	Study to Upgrade		\$406K		
Countywide Transit Study	Countywide	Study		\$697K		
Countywide Freight Study	Countywide	Study		\$290K		
Countywide ITS Study	Countywide	Study		\$11.0M		
Briggs Street	Maple Rd to Division St	Reconstruction			\$13.6M	
Division Street	Briggs Street to Cedar Road	Reconstruction		\$57.9M		
Wilmington-Peotone Rd	TBD	Intersection & spot improvements				

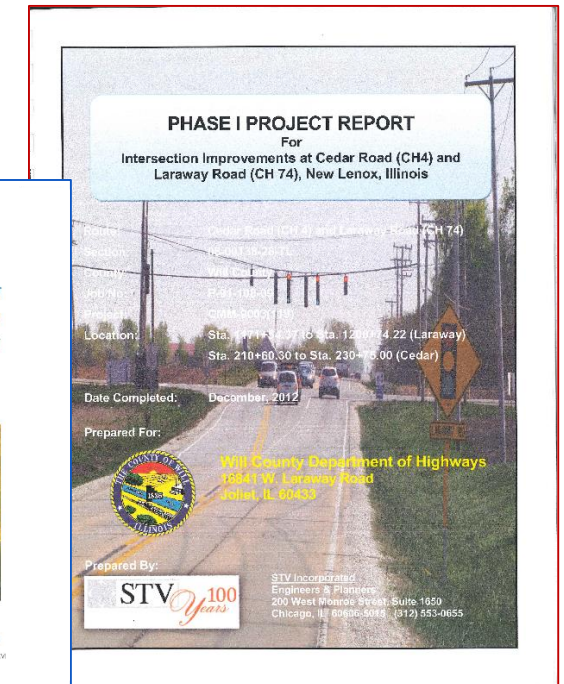
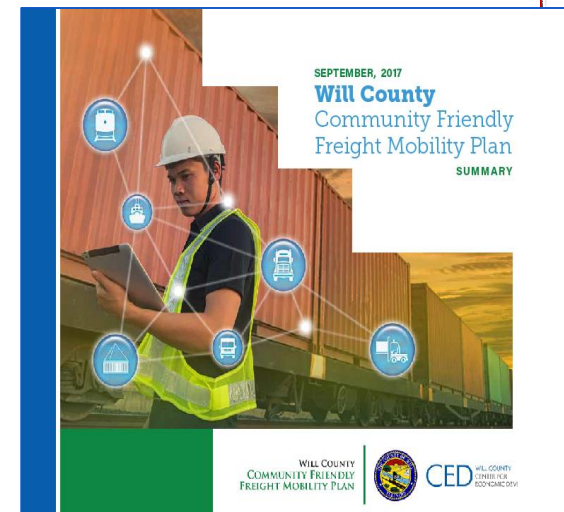
\*Allows County to start but not enough \$ to complete project



# Will Connects 2040

- Accomplishments to Date:
  - Will County Community Friendly Freight Plan - Adopted
  - Laraway Road:
    - Cedar Road at Laraway Road
    - US 52 to Cedar Road
    - Cedar Road to US 45 (LaGrange Road)

- Manhattan-Monee Road
- Countywide ITS Study
- Gougar Road



# Transportation Plans

- 1<sup>st</sup> one adopted by Board in March 2012
- Updated yearly
  - Typically late spring/early summer
  - Used to put together next year's budget
- Used as update to *Will Connects 2040* LRTP



Will County Transportation Improvement Program FY 2012-2017

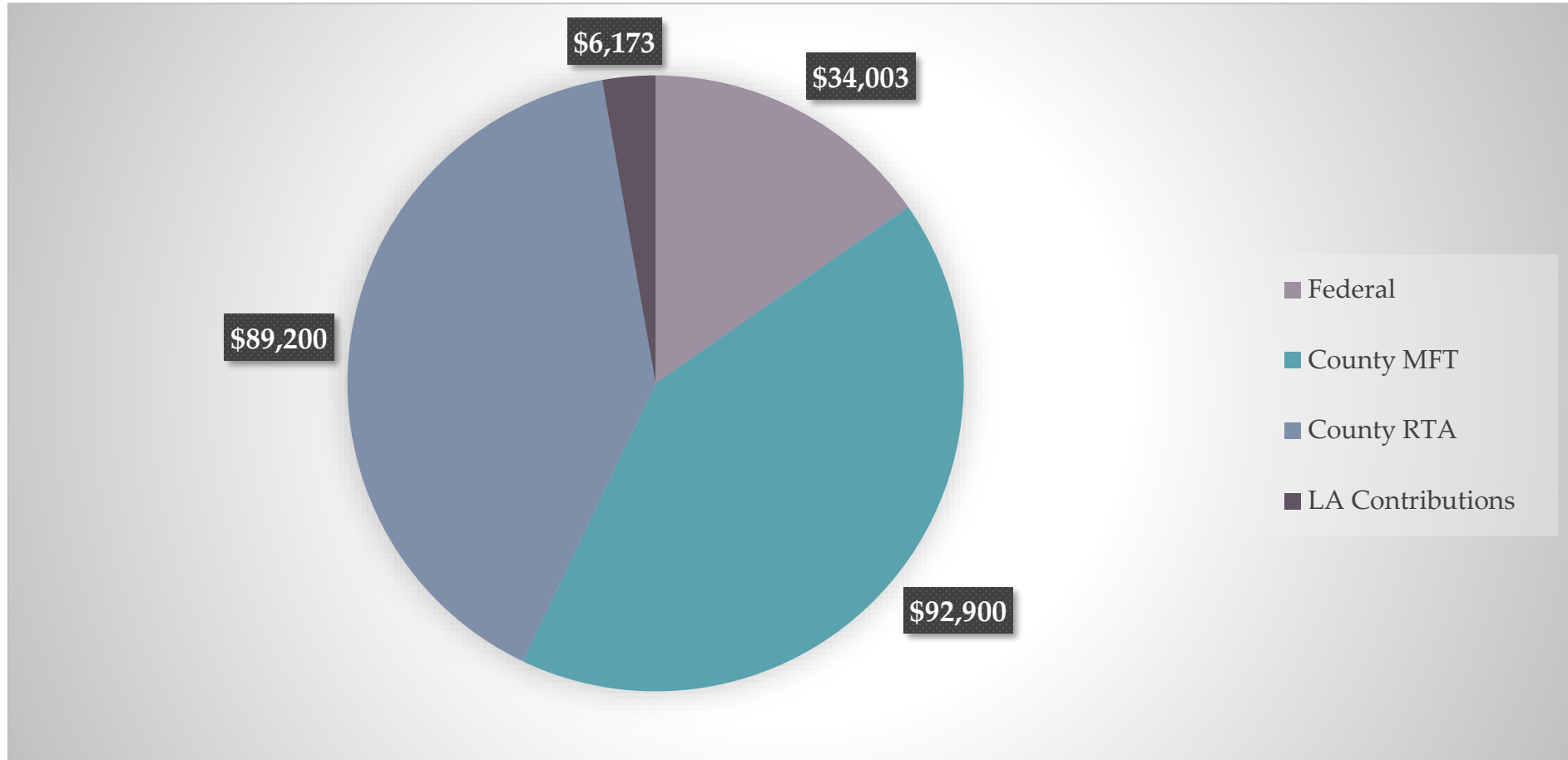


Will County Transportation Improvement Plan FY 2020-2025

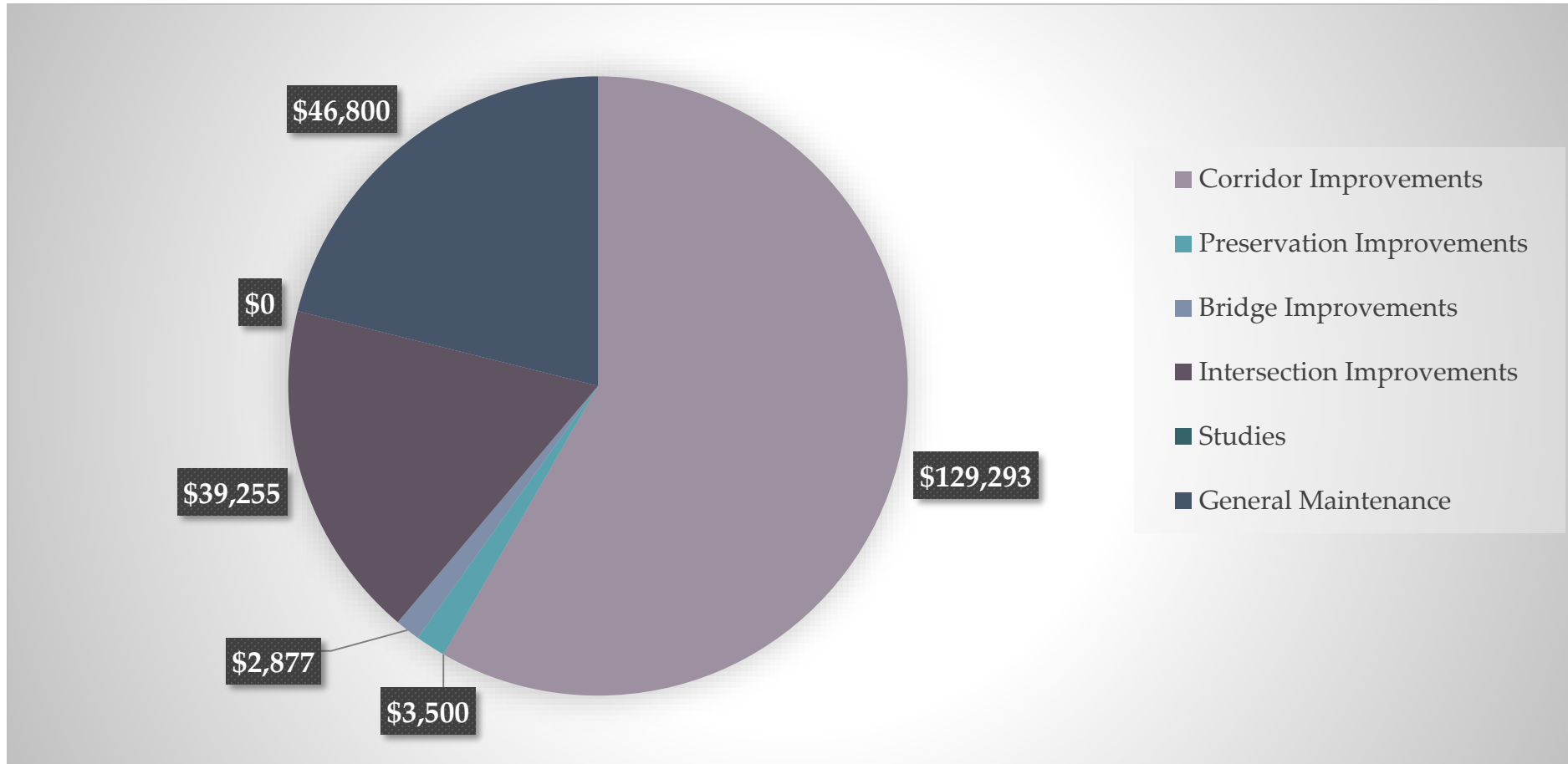
# FY 2020-2025 Transportation Plan

- March 2019 –
  - FY 2019-2025 TIP distributed
  - Receive updated project information
  - Gather updated revenue data
  - Start updating plan narrative
- April 2019 –
  - Meeting to work through funding issues
  - Finalize Transportation Improvement Program
  - Distribute narrative for review
- May 2019 –
  - Plan introduced at Public Works and Transportation Committee
  - Comments solicited – **None Received**
- June 2019 –
  - Public Works & Transportation Committee voted plan to full Board
  - Plan adopted by County Board\*
    - June 20, 2019

# 2020-2025 Revenue (\$1000)



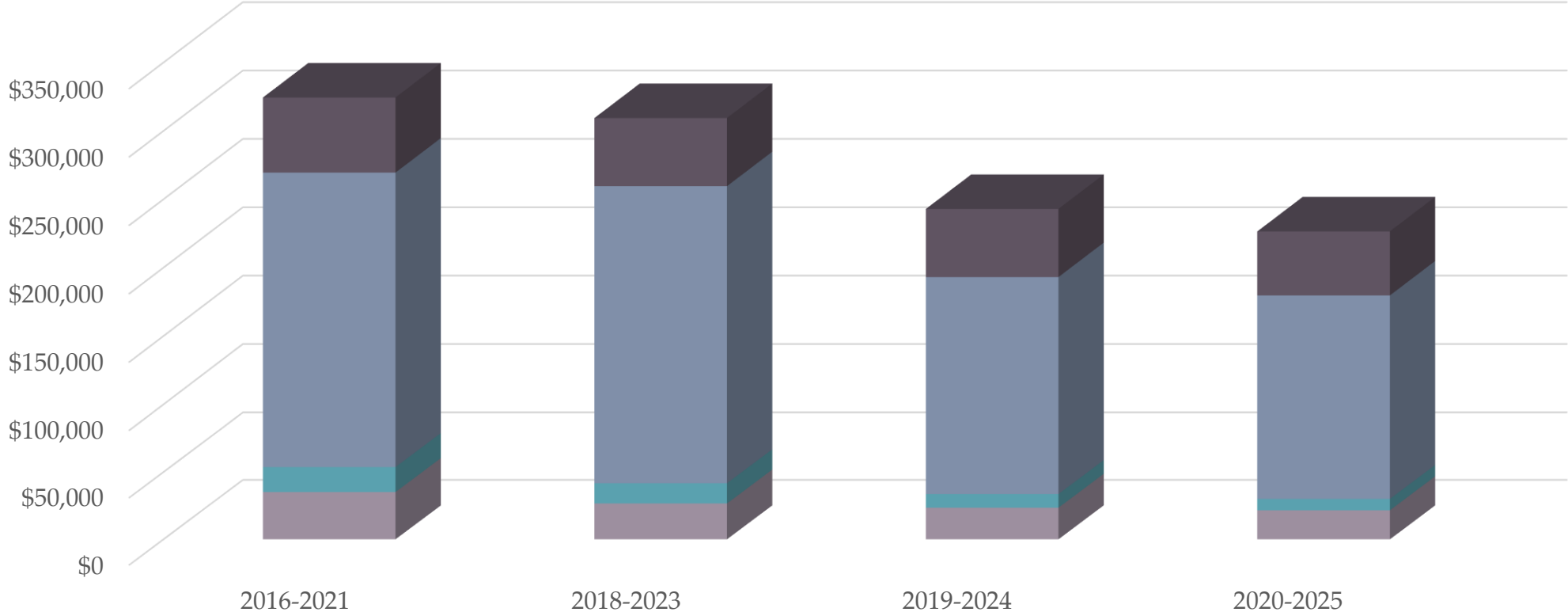
# 2020-2025 Expenditures (\$1000)



# FY 2020-2025 Transportation Plan Highlights

- \$129.3 M in Corridor projects including
  - Construction of
    - 6 center line miles on 3 County Highways
    - Includes
      - 1 structure over I-80
      - 1 structure over the Union Drainage Ditch
  - Design of 4.5 center line miles on 3 County Highways
  - ROW acquisition along 6.5 miles on 4 County Highways
  - Initiation of 2 Preliminary Engineering Studies
- \$3.5 M in Preservation projects
  - Reconstruction of 0.5 miles of 1 County Highway
- \$2.9 M in Bridge projects
  - Construction of 1 Bridge
- \$39.2 M in Intersection Improvements
  - Construction of 3 Intersections
  - Design, ROW acquisition & Construction of 1 Intersection
- \$46.8 M in General Maintenance
  - Materials
  - Overlays
  - Striping
  - Traffic Signal Maintenance
  - Other Maintenance

# Category Expenditures over Time (pre-Capital Bill)



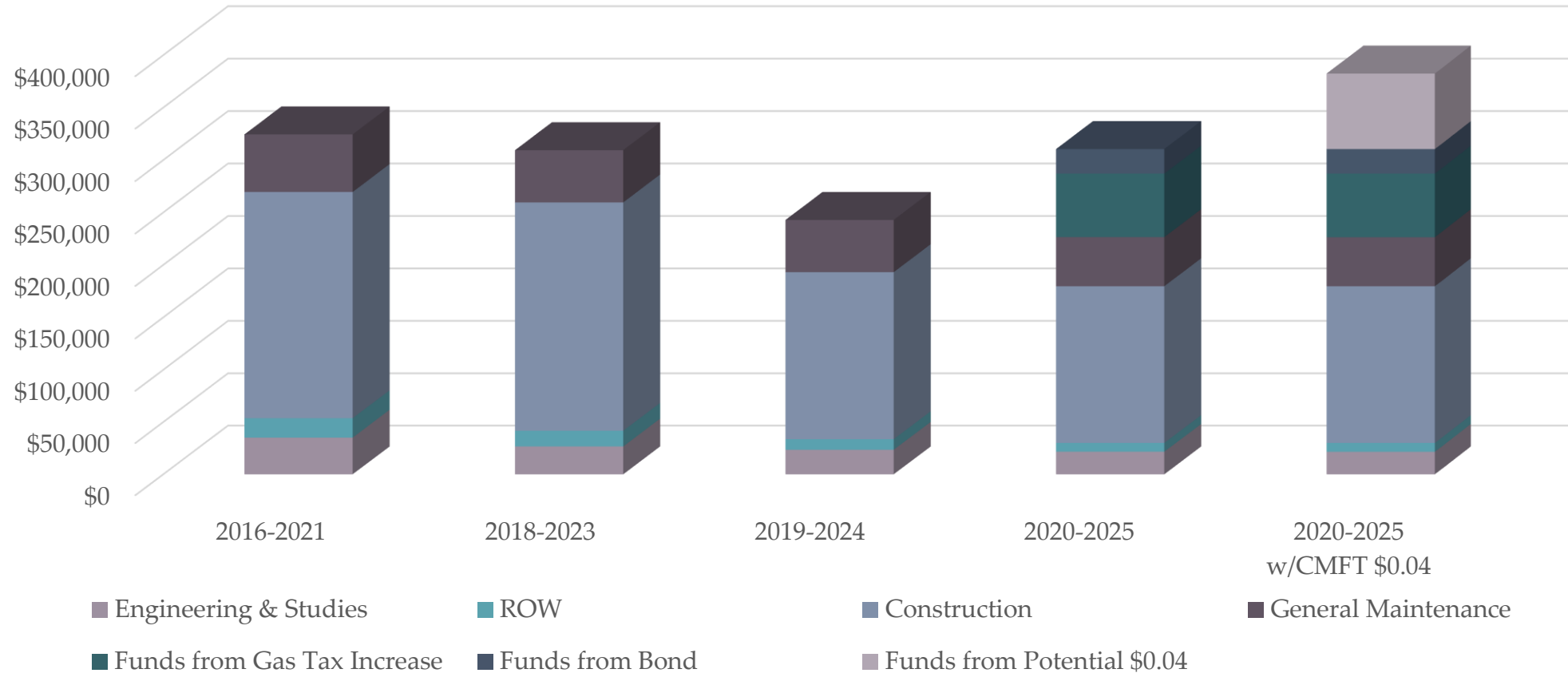
■ Engineering & Studies   ■ ROW   ■ Construction   ■ General Maintenance



# FY 2020-2025 Transportation Plan (post Capital Bill)

- Capital Bill Provides:
  - Increase to our Annual MFT allotment
  - Bond component
  - The County with the ability to implement a County-option gas tax
- Allows Us:
  - Advance phases of projects into earlier years of the TIP
  - Bring phases back into the program that had fallen out
  - Add projects to the program

# Category Expenditures over Time (post Capital Bill)





Questions?