



# Truck Accommodations In Chicagoland's Projects

---

BY: JASON SALLEY, P. E.

IDOT D1 – GEOMETRIC STUDIES UNIT HEAD

MONDAY, NOVEMBER 18, 2019

# Presentation Outline

---

Diverging Diamond Interchanges

Roundabouts

Restricted Crossing U-Turns

Oversized Overweight Routing

Non-Reconstruction Accommodations

# Diverging Diamond Interchanges

---

IL Route 59 at Interstate 88 / City of Naperville, DuPage County (Existing)

Elmhurst Road at Interstate 90 / City of Des Plaines, Cook County (Existing)

Weber Road at Interstate 55 / Village of Bolingbrook, Will County (In Construction)

Houbolt Road at Interstate 80 / City of Joliet, Will County (Proposed)

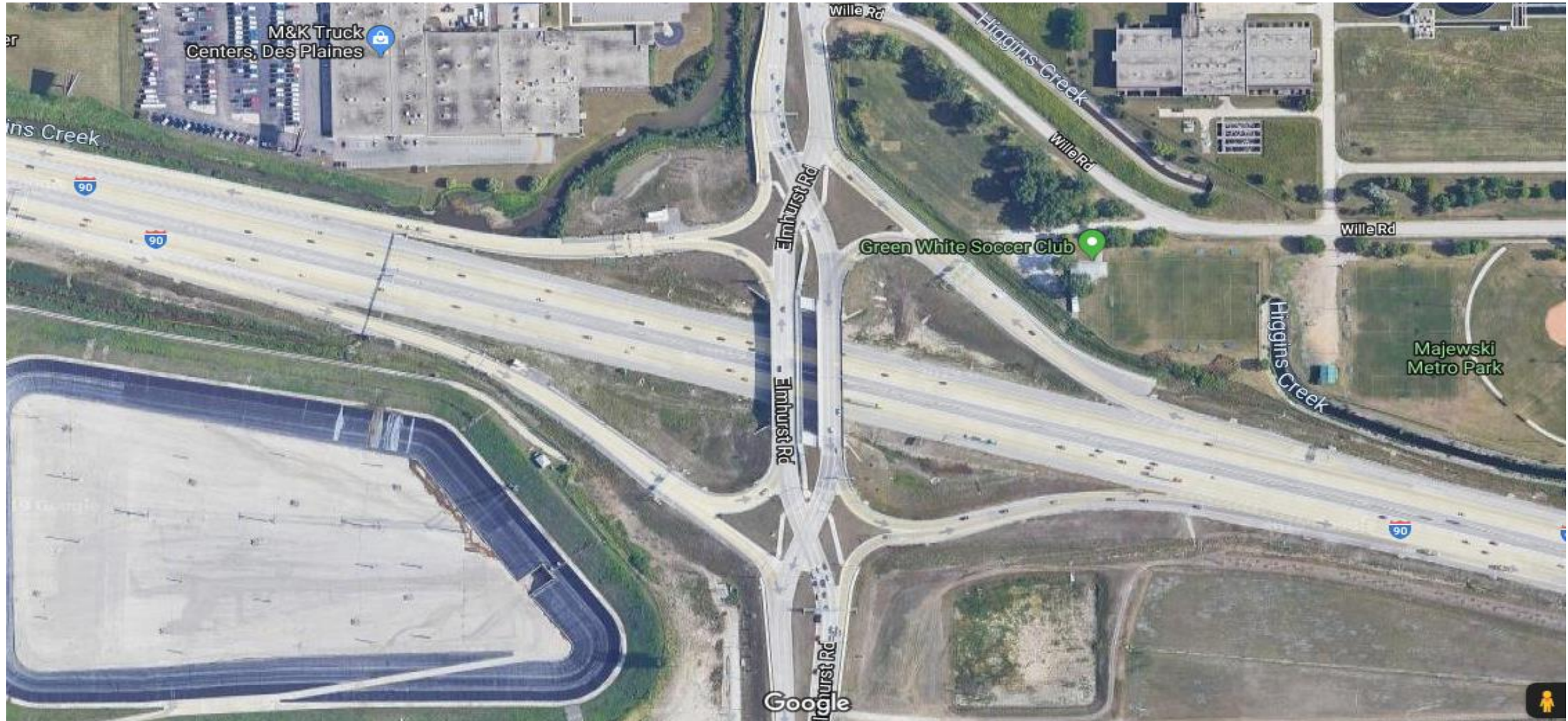
IL Route 59 at Interstate 55 / City of Joliet, Will County (Proposed)

IL Route 129 at Interstate 55 / City of Wilmington, Will County (Proposed/Potential)

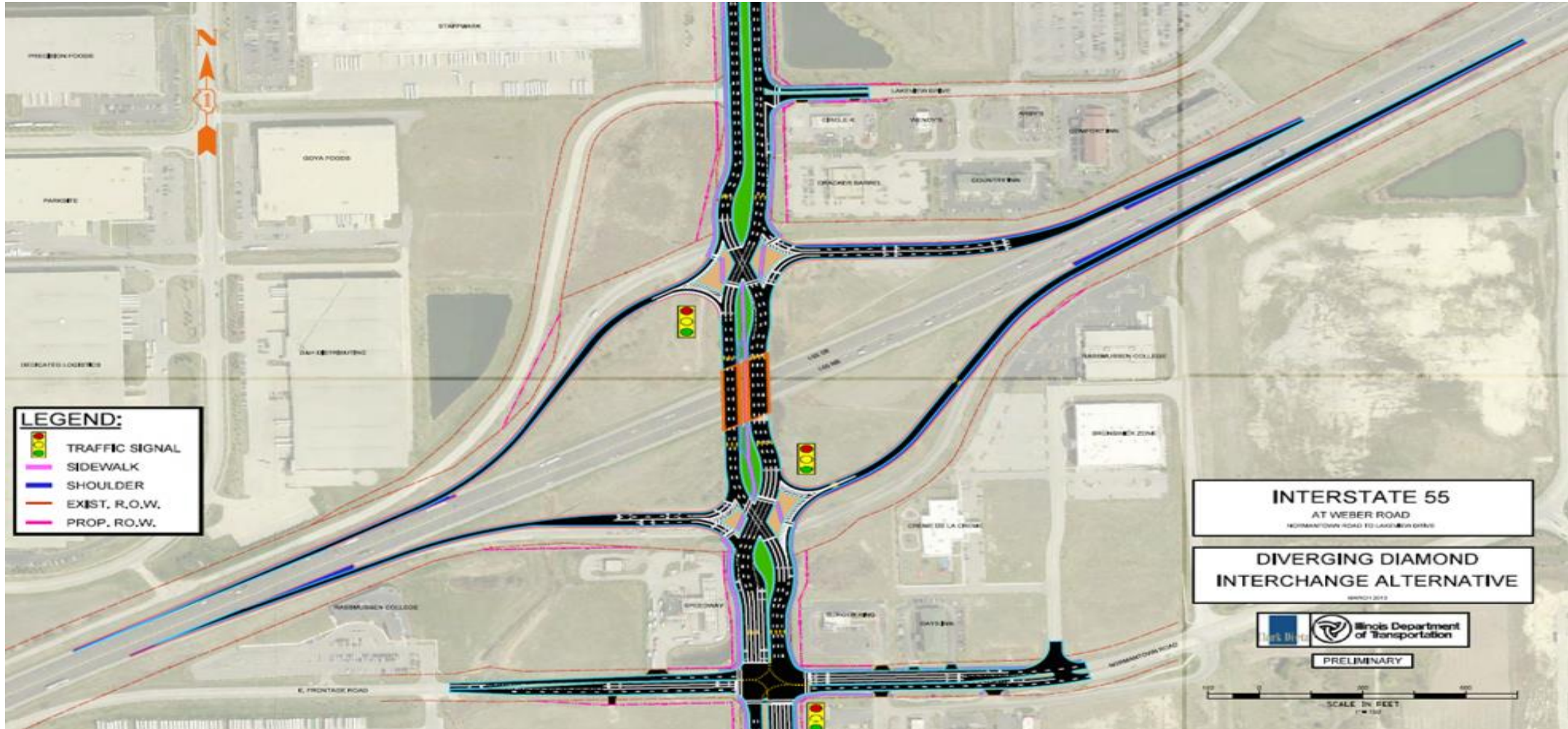
# DDI's - IL Route 59 at Interstate 88



# DDI's - Elmhurst Road at Interstate 90

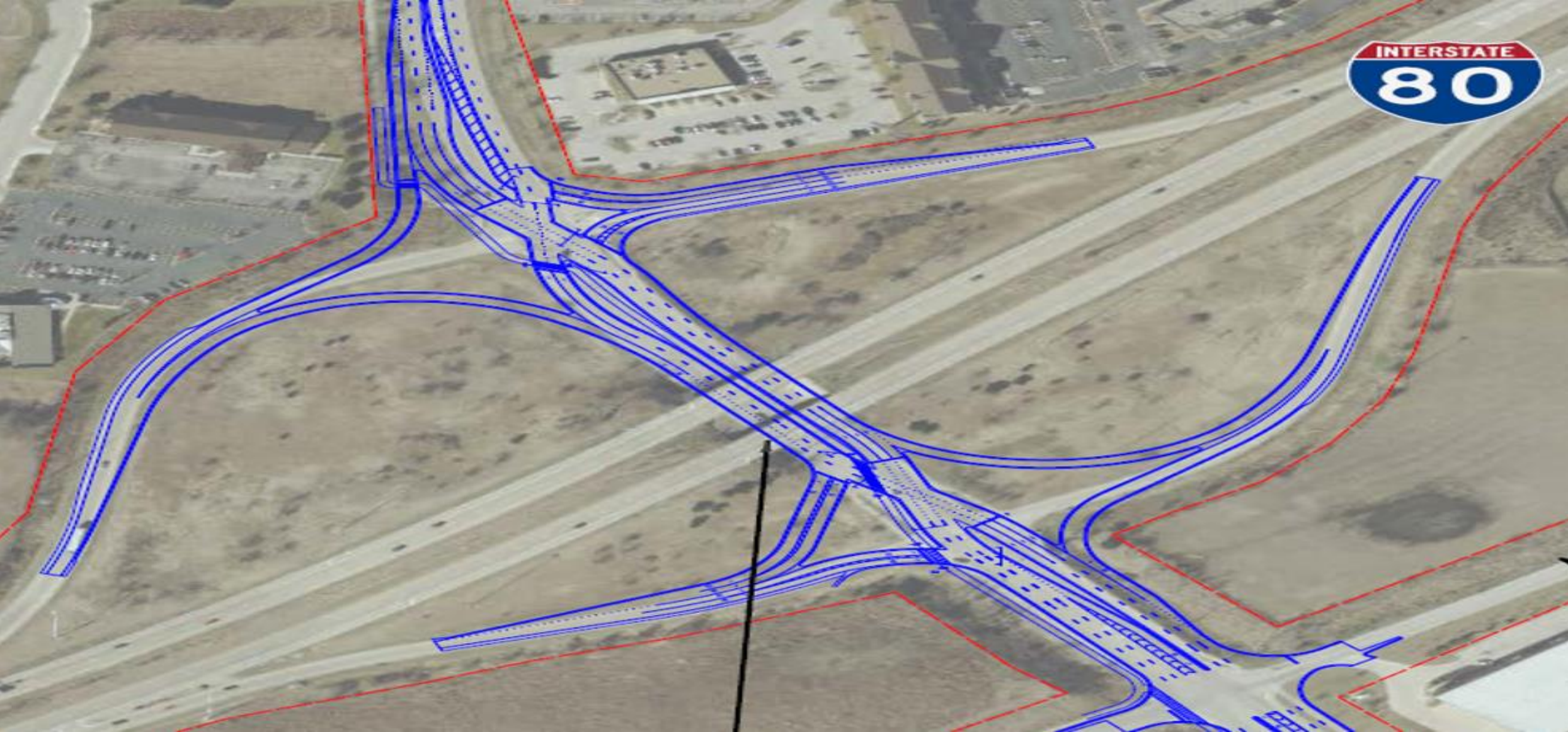


# DDI's - Weber Road at Interstate 55





# DDI's - Houbolt Road at Interstate 80, cont'd





# DDI's - IL Route 59 at Interstate 55



# DDI's - IL Route 129 at Interstate 55



# DDI's – Truck Accommodations

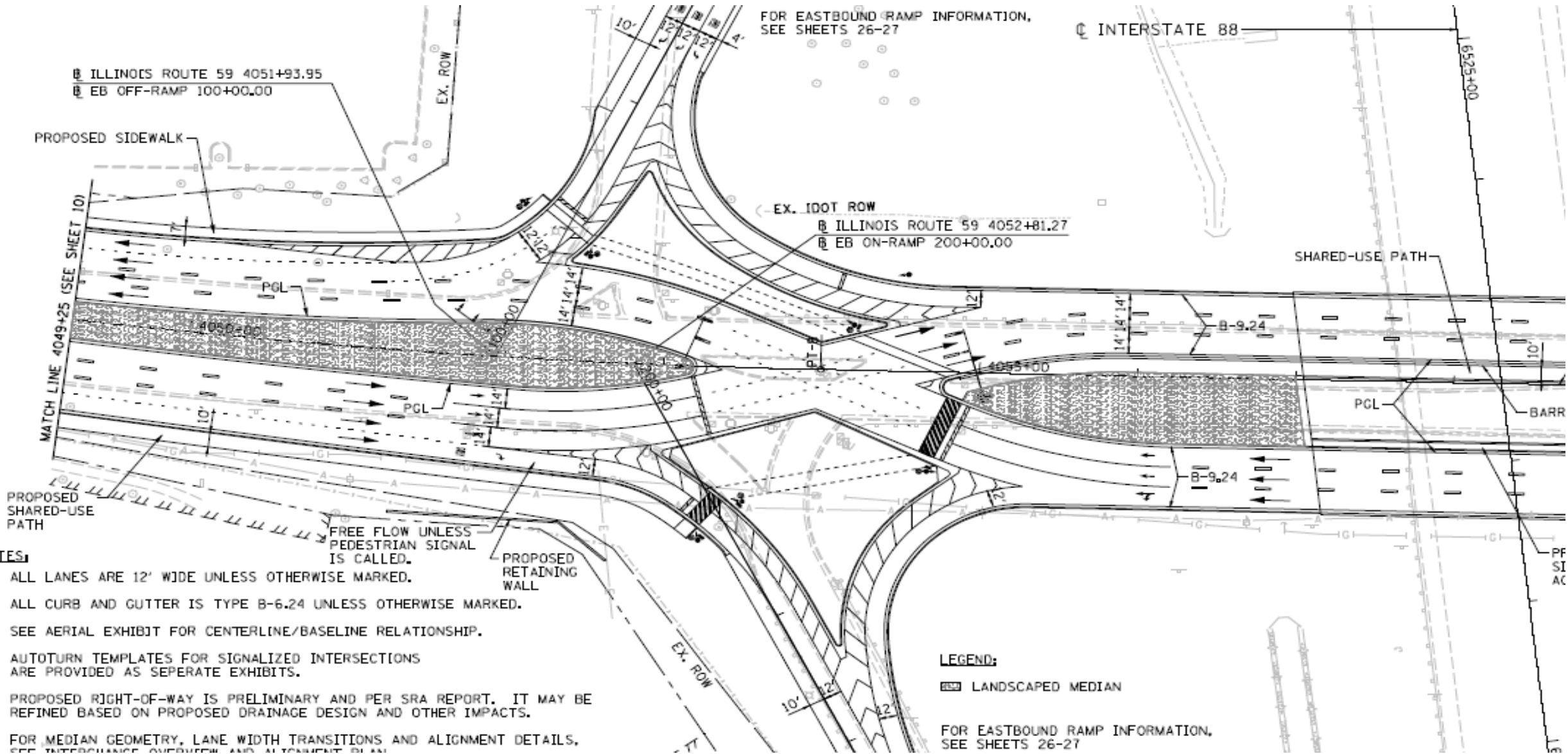
---

Wider Than Standard Lane Widths

Striping To Accommodate Off-Tracking

Truck Aprons

# DDI's - Wider Than Standard Lanes



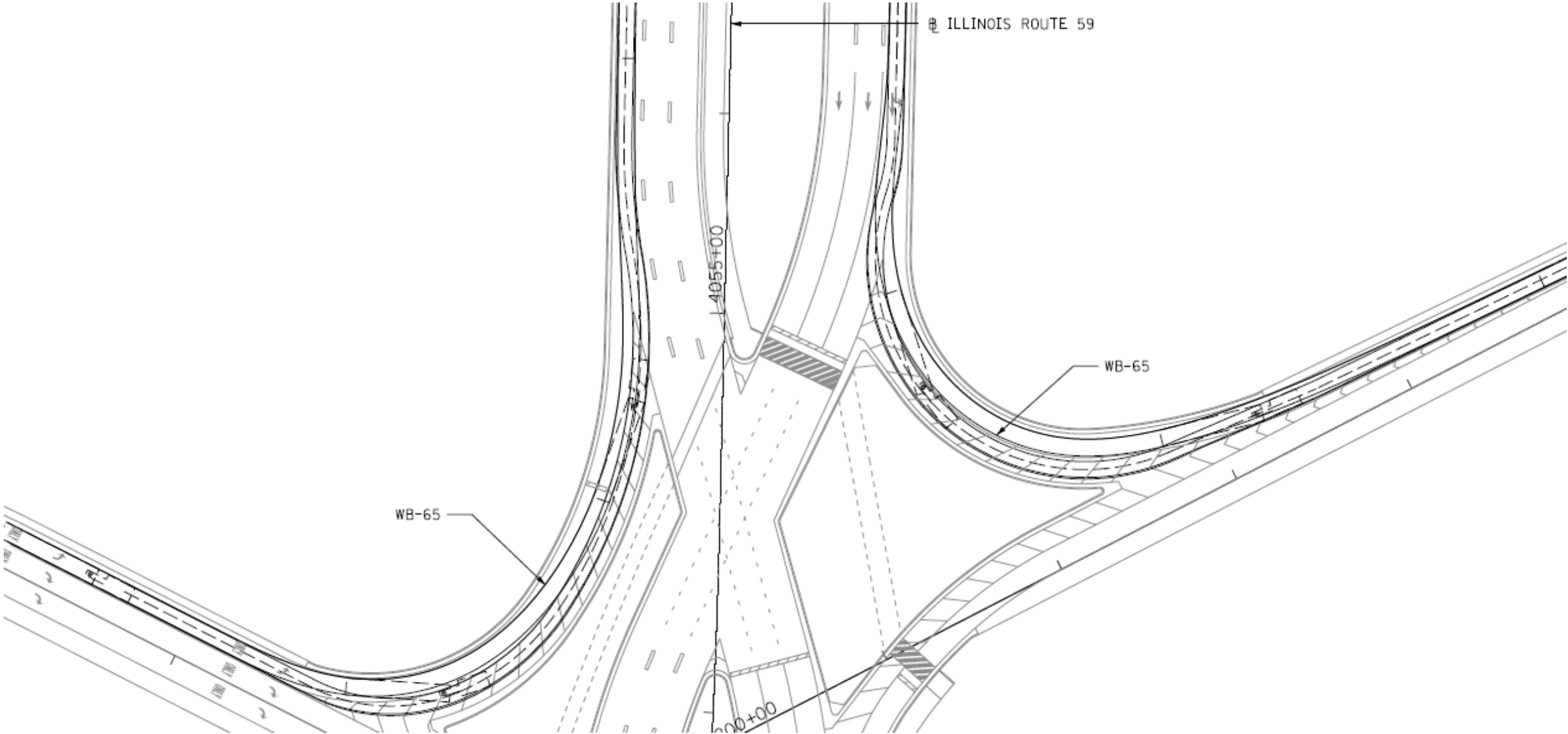
**NOTES:**

1. ALL LANES ARE 12' WIDE UNLESS OTHERWISE MARKED.
2. ALL CURB AND GUTTER IS TYPE B-6.24 UNLESS OTHERWISE MARKED.
3. SEE AERIAL EXHIBIT FOR CENTERLINE/BASELINE RELATIONSHIP.
4. AUTOTURN TEMPLATES FOR SIGNALIZED INTERSECTIONS ARE PROVIDED AS SEPERATE EXHIBITS.
5. PROPOSED RIGHT-OF-WAY IS PRELIMINARY AND PER SRA REPORT. IT MAY BE REFINED BASED ON PROPOSED DRAINAGE DESIGN AND OTHER IMPACTS.
6. FOR MEDIAN GEOMETRY, LANE WIDTH TRANSITIONS AND ALIGNMENT DETAILS, SEE INTERCHANGE OVERVIEW AND ALIGNMENT PLAN.

# DDI's - Wider Than Standard Lanes, Cont'd



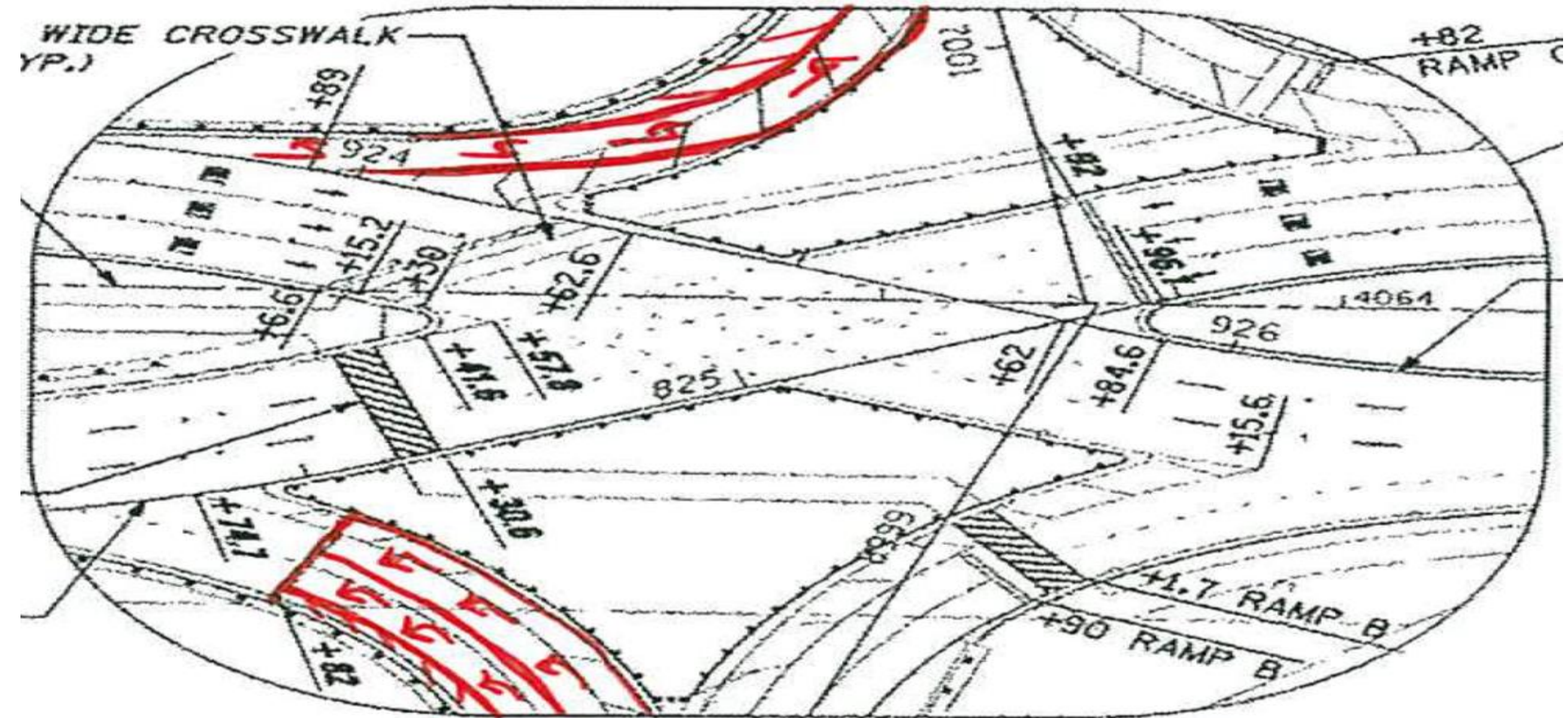
# DDI's - Wider Than Standard Lanes, Cont'd



# DDI's - Striping To Accommodate Off-Tracking, Cont'd



# DDI's - Striping To Accommodate Off-Tracking





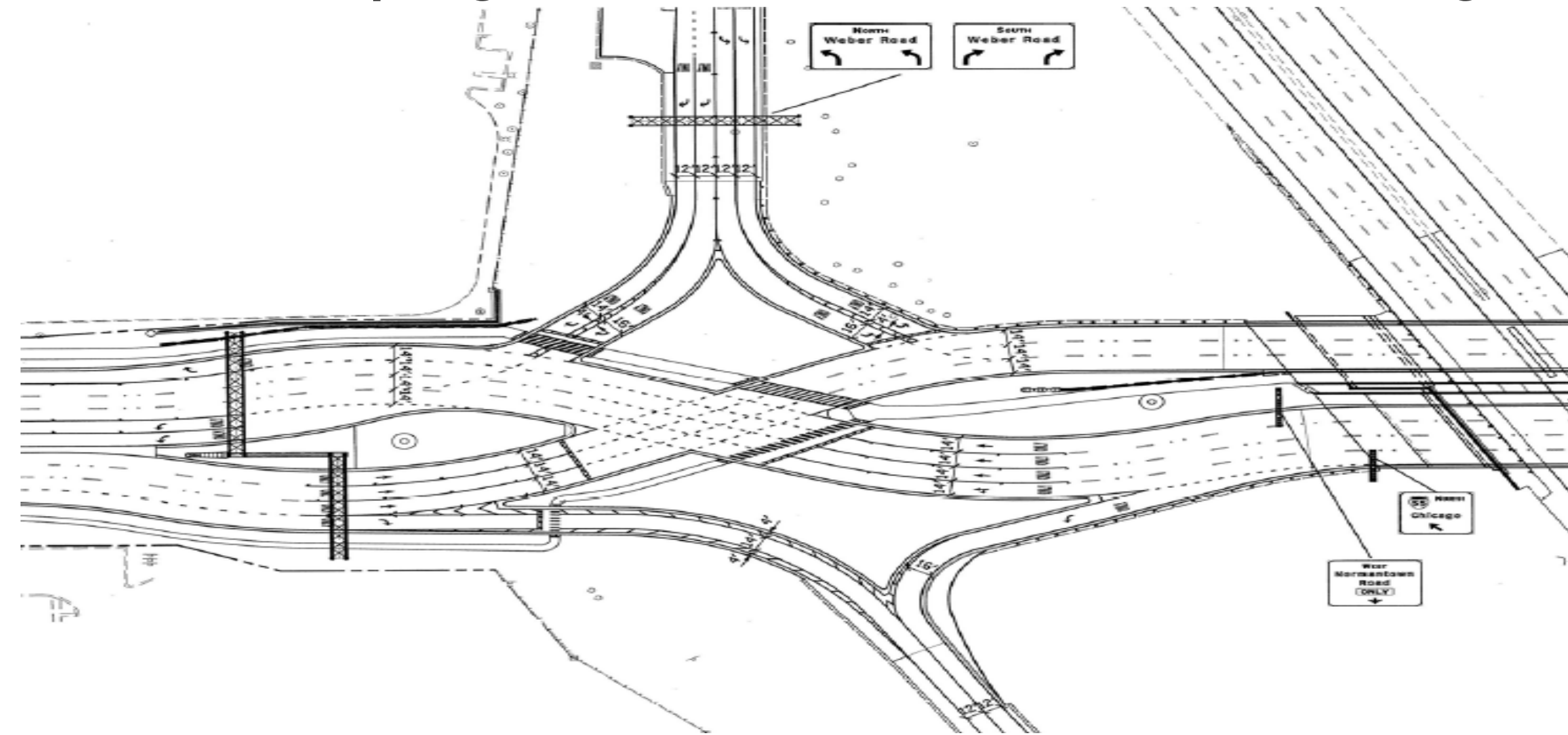


*I-88 @ IL -59*  
*Diverging Diamond*  
*Interchange*

# DDI's - Striping To Accommodate Off-Tracking



# DDI's - Striping To Accommodate Off-Tracking



# DDI's - Truck Aprons



# DDI's - Truck Aprons, cont'd



# Roundabouts

IL Route 47 at Burlington Road / Village of Campton Hills, Kane County (Existing)

IL Route 47 at Plato Road / Village of Campton Hills, Kane County (In Construction)

---

IL Route 23 at Interstate 90 & Harmony Road / City of Marengo, McHenry County (In Construction)

US Route 20 at Harmony Road / City of Marengo, McHenry County (In Construction)

IL Route 58 at Wolf Road / City of Des Plaines, Cook County (In Construction)

US Route 20 at Marengo-Beck-Union Roads / City of Marengo, McHenry County (Proposed)

IL Route 47 at Lake Avenue / City of Woodstock, McHenry County (Proposed)

IL Route 47 at McConnell Road / City of Woodstock, McHenry County (Proposed)

IL Route 47 at Judd Avenue / City of Woodstock, McHenry County (Proposed)

IL Route 47 at Ware Road / City of Woodstock, McHenry County (Proposed)

IL Route 47 at Charles Road / City of Woodstock, McHenry County (Proposed)

# Roundabouts - IL Route 47 at Burlington Road



# Roundabouts - IL Route 47 at Plato Road





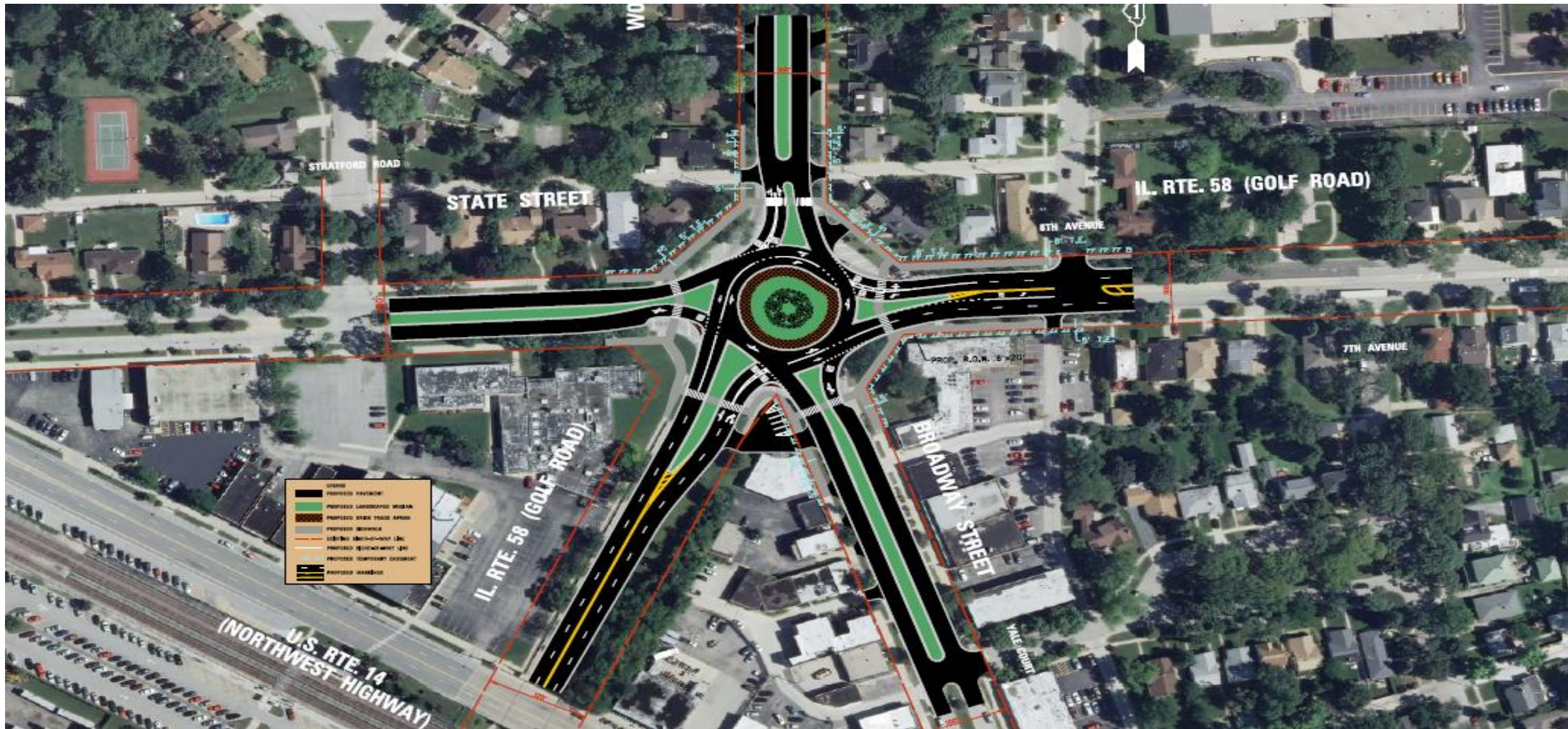
# Roundabouts - IL Route 23 at I-90 & Harmony Rd



# Roundabouts - US Route 20 at Harmony Road



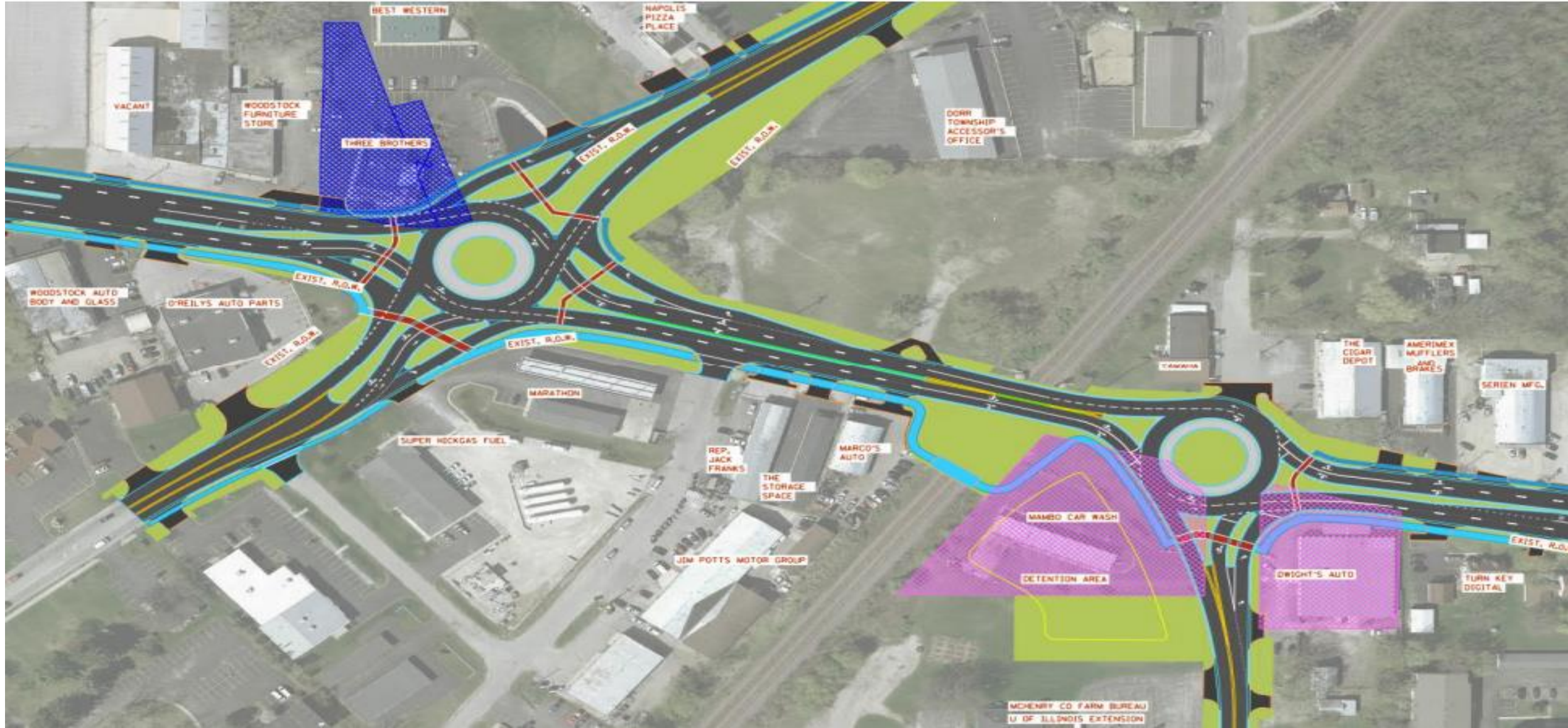
# Roundabouts - IL Route 58 at Wolf Road



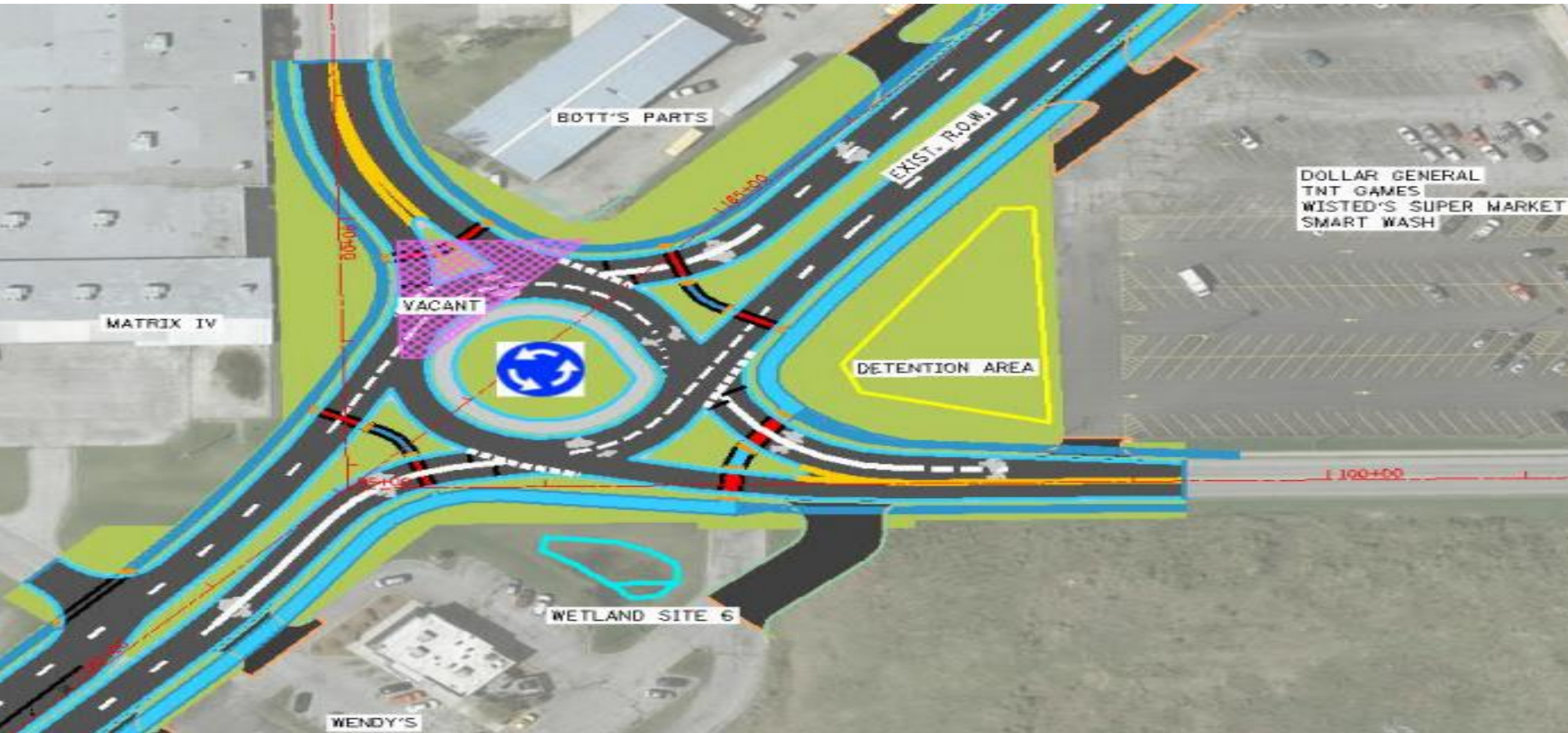
# Roundabouts - US Route 20 at Marengo-Beck-Union



# Roundabouts - IL Route 47 at Lake & McConnell



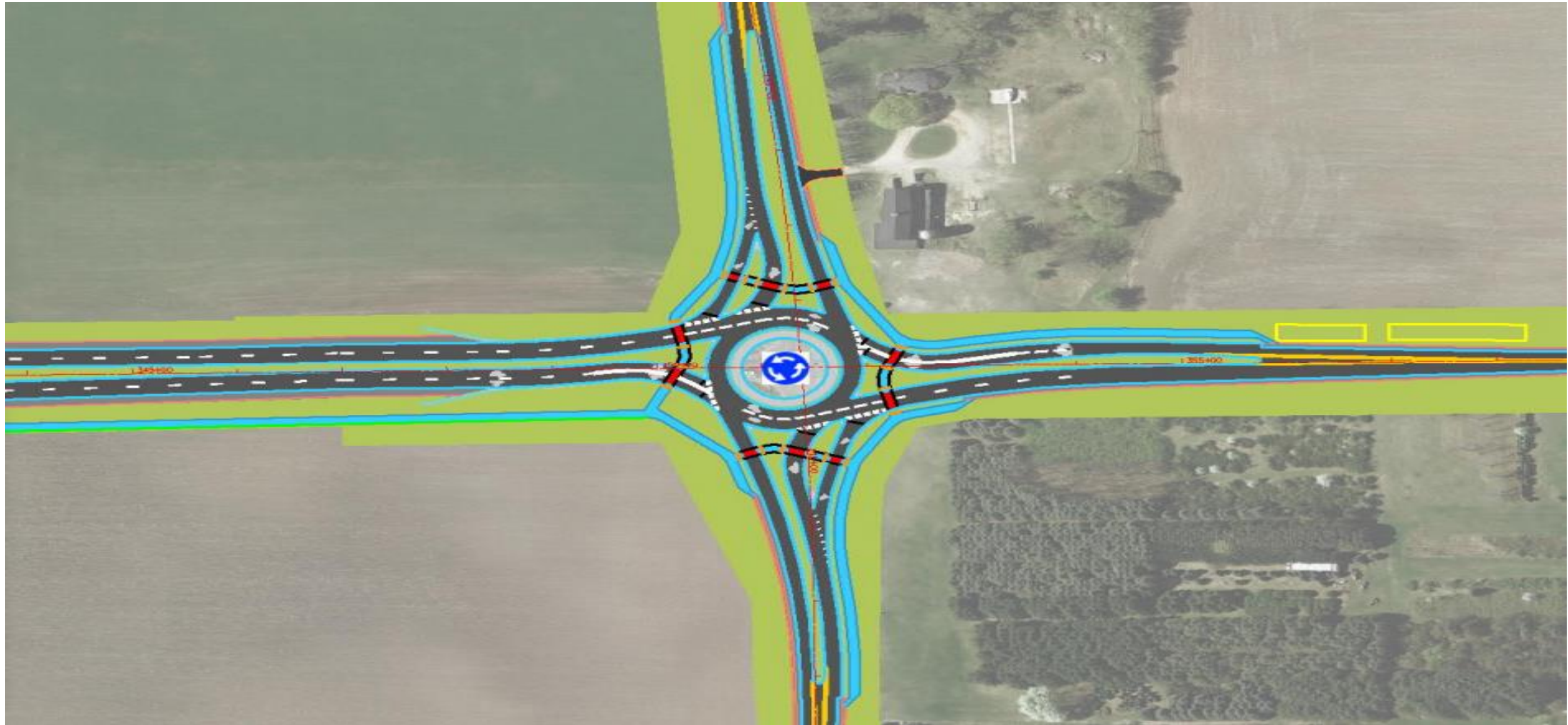
# Roundabouts - IL Route 47 at Judd Avenue



# Roundabouts - IL Route 47 at Ware Road



# Roundabouts - IL Route 47 at Charles Road





# Roundabouts – Truck Accommodations

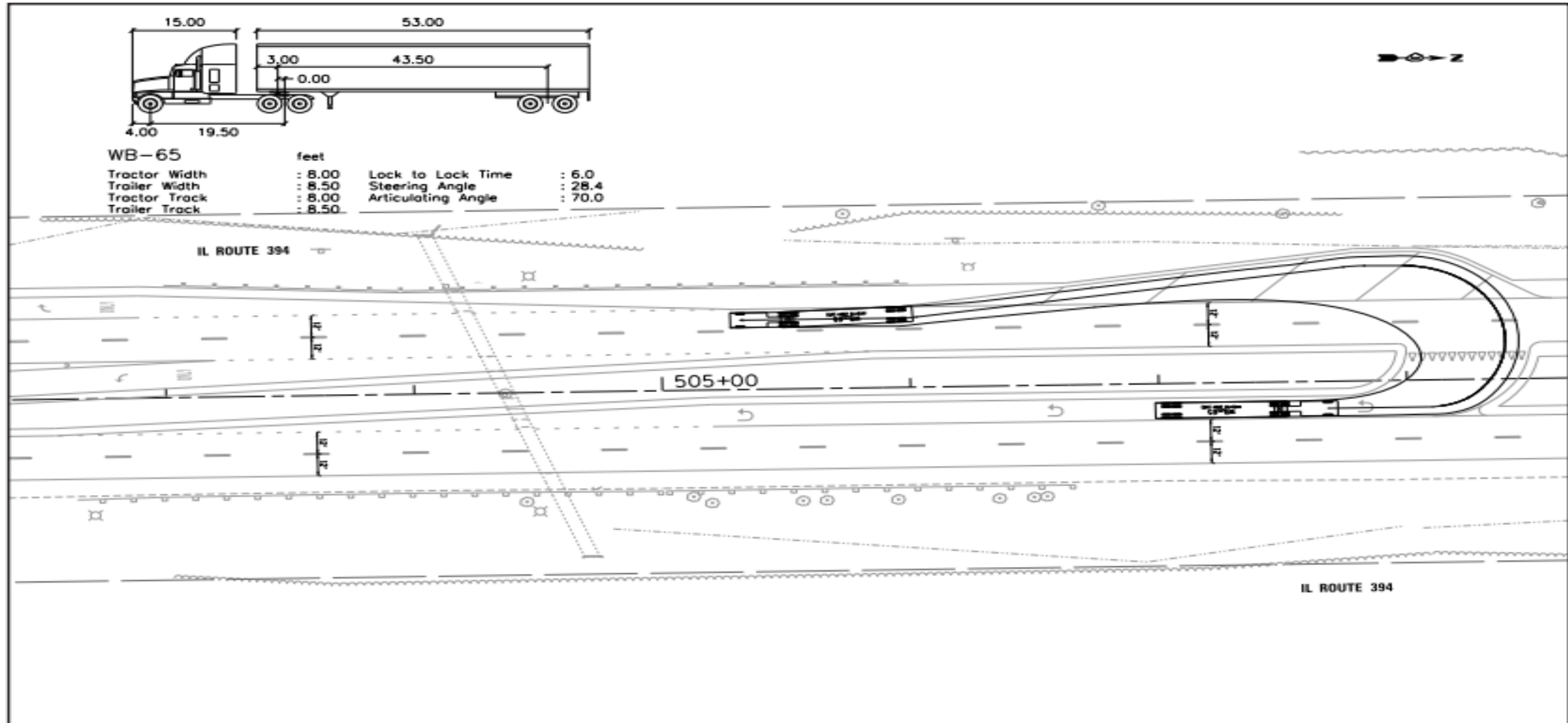
---

<https://youtu.be/ysIR2MskMuU>

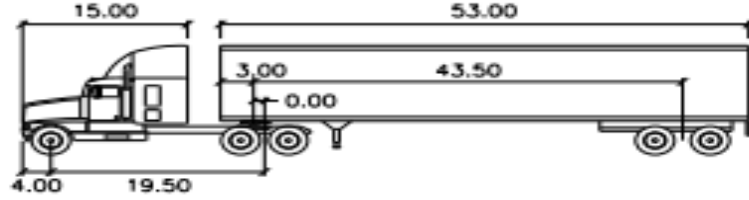
# Restricted Crossing U-Turns (RCUTs)



# Restricted Crossing U-Turns (RCUTs), cont'd



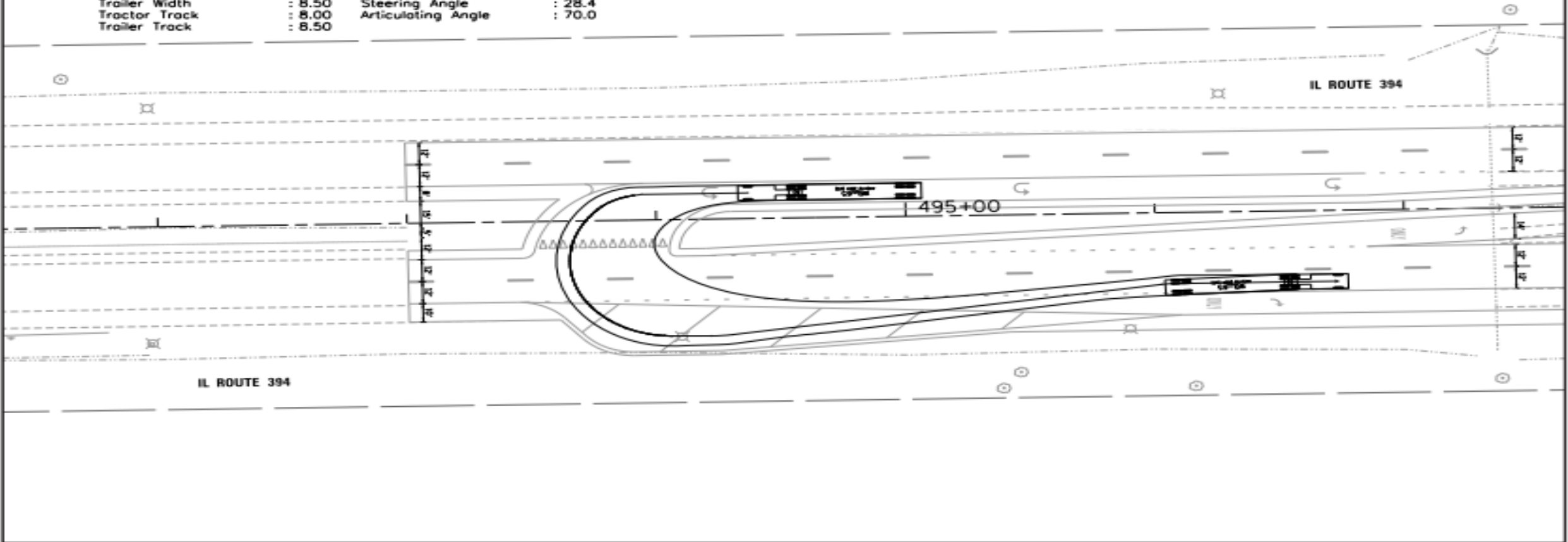
# Restricted Crossing U-Turns (RCUTs), cont'd



WB-65

feet

Tractor Width	: 8.00	Lock to Lock Time	: 6.0
Trailer Width	: 8.50	Steering Angle	: 28.4
Tractor Track	: 8.00	Articulating Angle	: 70.0
Trailer Track	: 8.50		

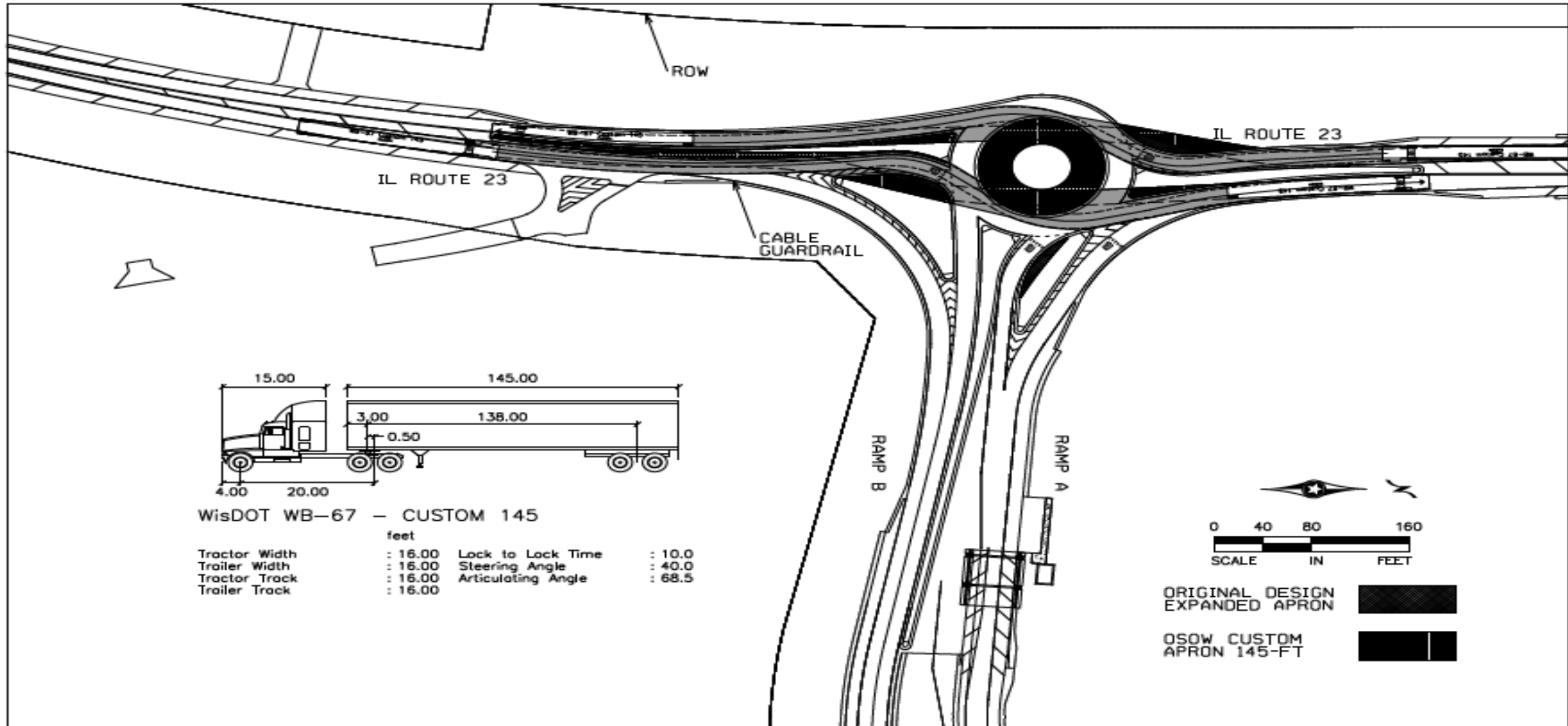


# Restricted Crossing U-Turns (RCUTs), cont'd

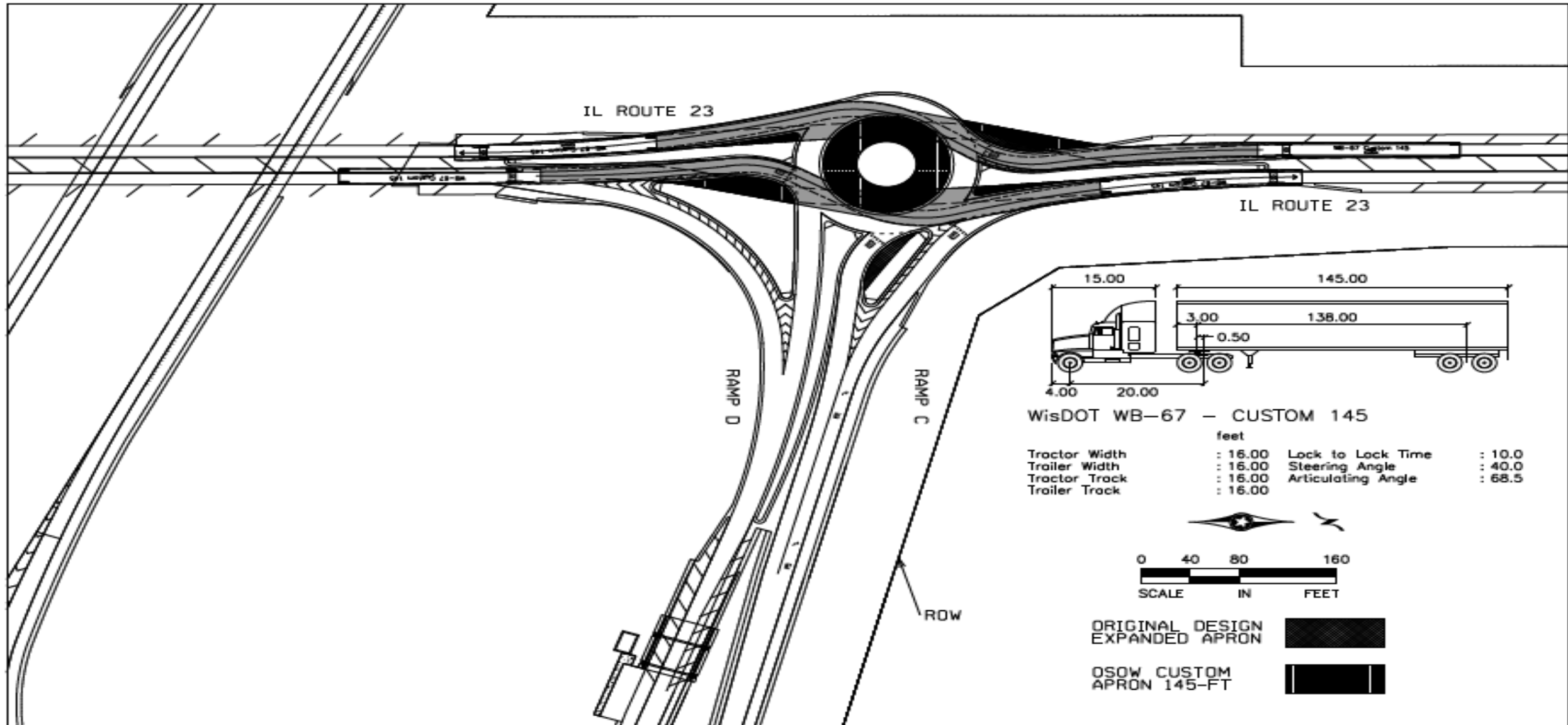
---

<https://youtu.be/yWeNETjsyNk>

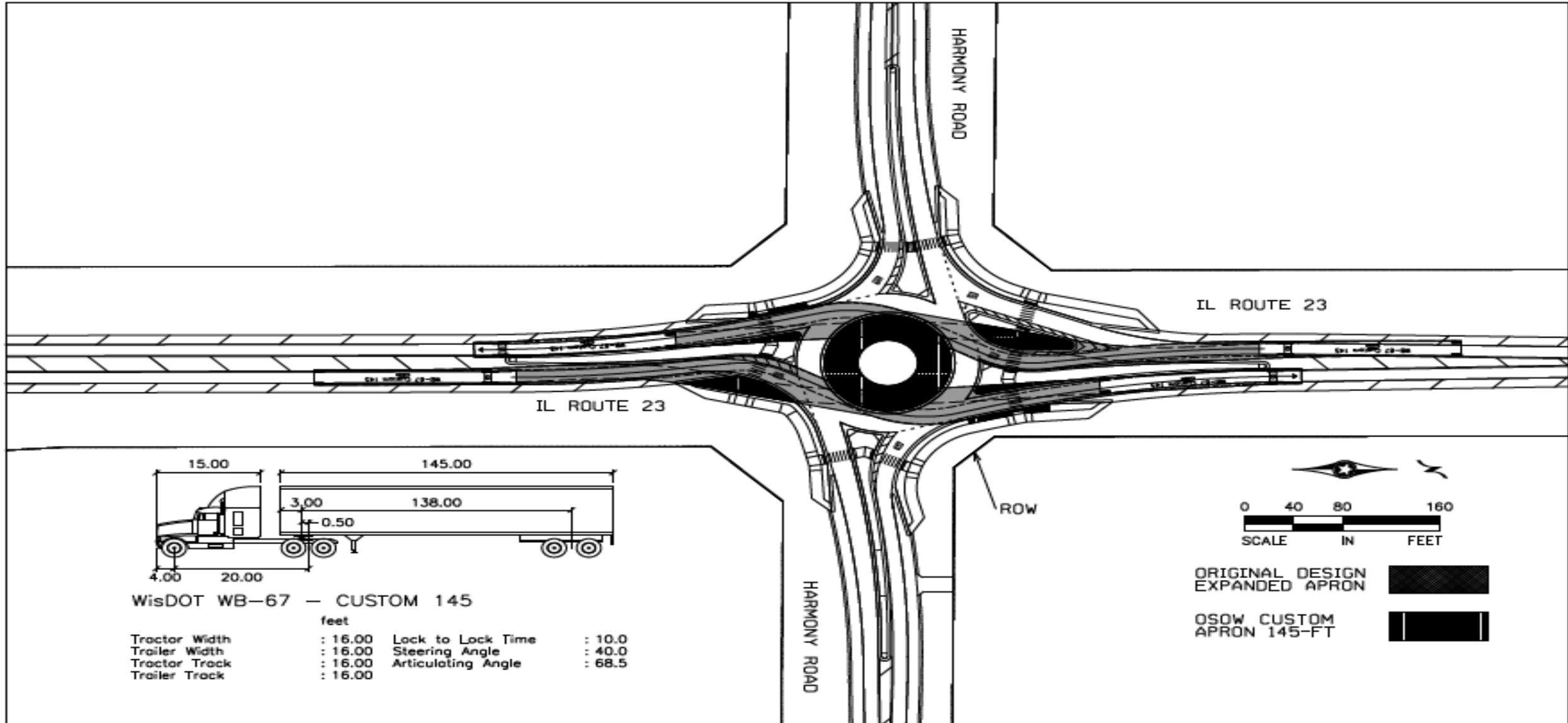
# Oversized Overweight (OSOW) Accommodations



# Oversized Overweight (OSOW) Accommodations

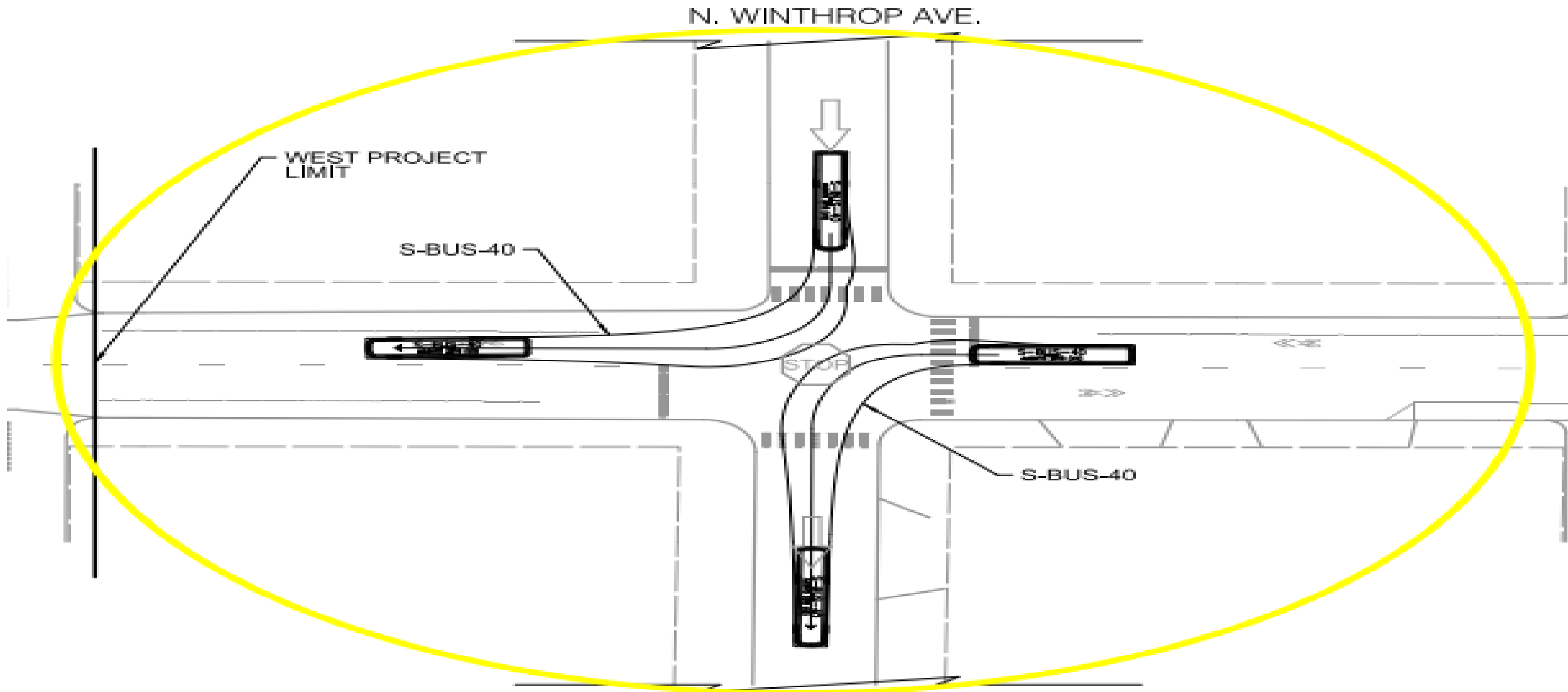


# Oversized Overweight (OSOW) Accommodations

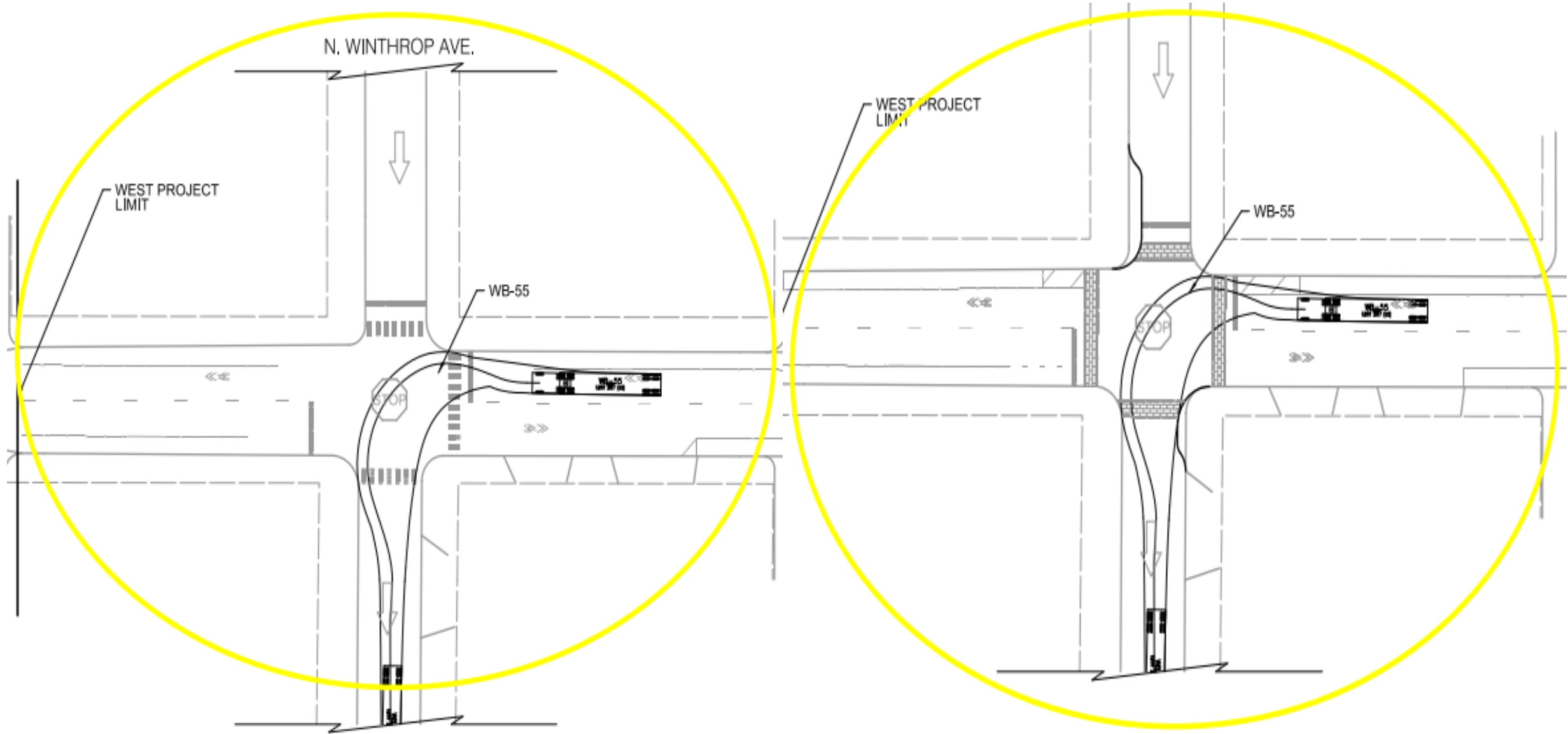




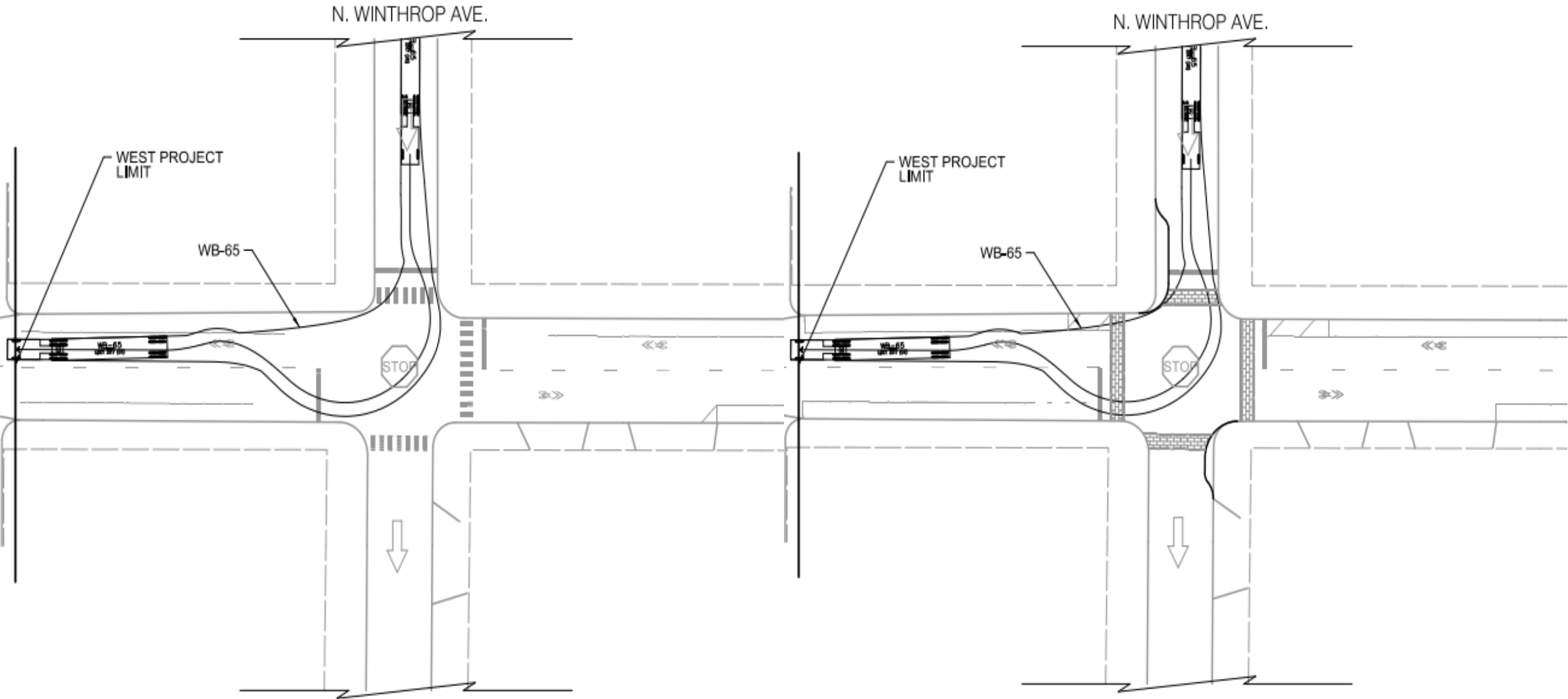
# Non-Reconstruction Projects Accommodations



# Non-Reconstruction Projects Accommodations



# Non-Reconstruction Projects Accommodations



**THANK YOU FOR THE OPPORTUNITY**

---

**QUESTIONS?**