



# Regional Sidewalk Inventory

November 15, 2019

Stephanie Levine  
Associate Policy Analyst



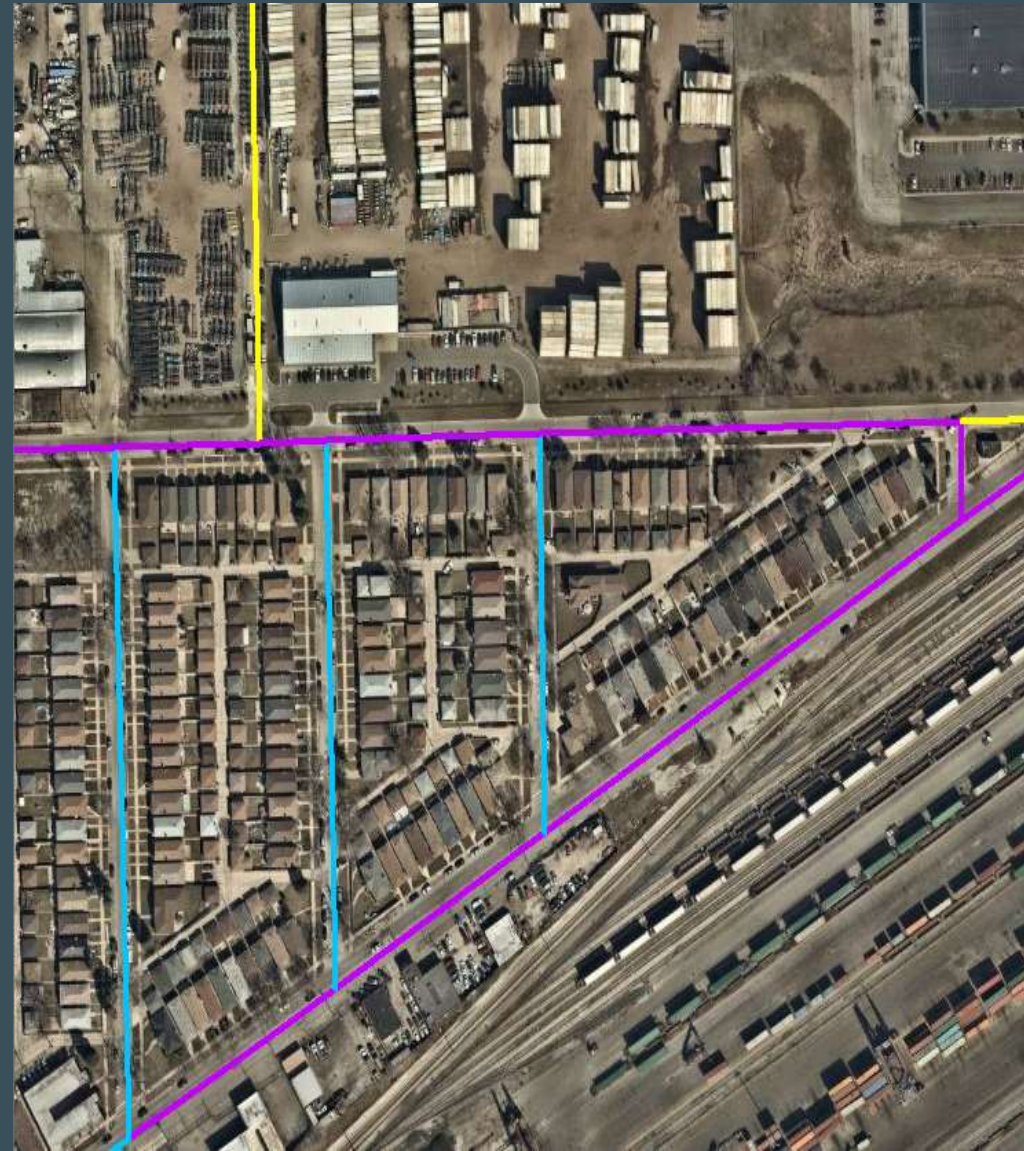


**Compact walkable communities**



# Dataset development

- IRIS highway data and Nearmap aerial imagery from March 2018
- Streets coded as having sidewalks on both, one, or neither side of each road segment
- Now available on CMAP's Data Hub and as an interactive map on CMAP website

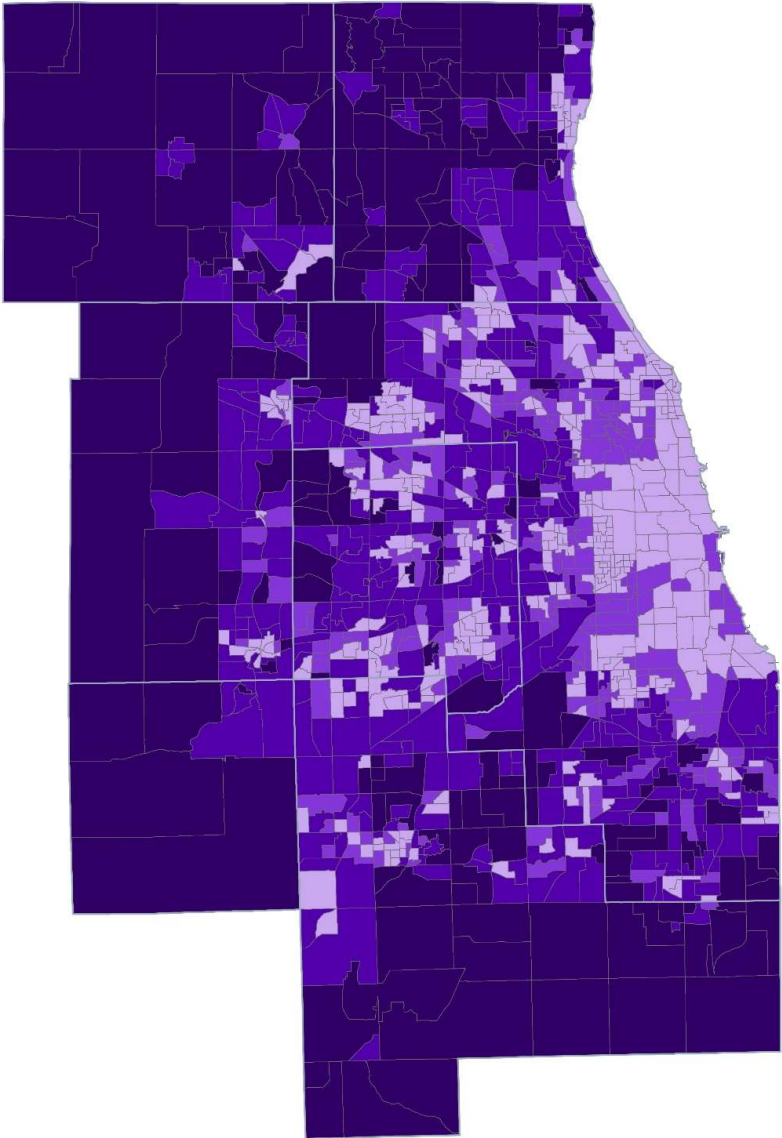


---

**Percent of streets with no sidewalk by census tract and Chicago Community Area**

- 0 - 5%
- 6 - 25%
- 26 - 75%
- 76 - 100%

Source: Chicago Metropolitan Agency for Planning analysis of the 2018 Regional Sidewalk Inventory.





# ON TO 2050 recommendations and strategies

- Improve safety for all users in downtowns and main streets
- Implement best practices in placemaking
- Make transit more competitive







**Make transit more competitive**

---

## Sidewalk investment opportunities near Metra stations based on population and employment density

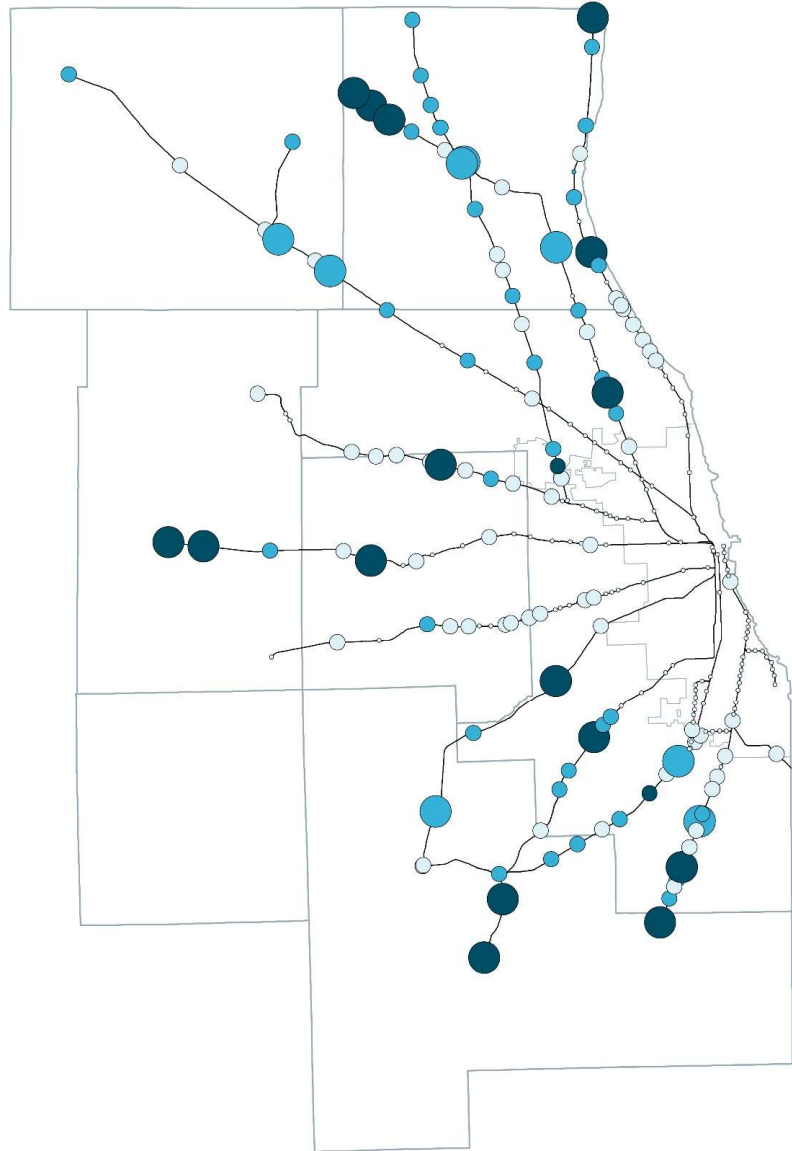
Percent of streets with missing sidewalks

- Less than 25%
- Between 25-50%
- More than 50%

Opportunity to invest in sidewalks relative to area population and employment



Source: Chicago Metropolitan Agency for Planning analysis of the 2018 Regional Sidewalk Inventory, 2015 population estimates from the Parcel-Based Housing Inventory, and 2015 Dun and Bradstreet data.



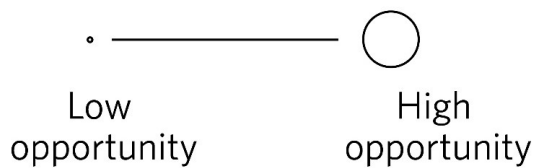
---

## Sidewalk investment opportunities near CTA rail stations based on population and employment density

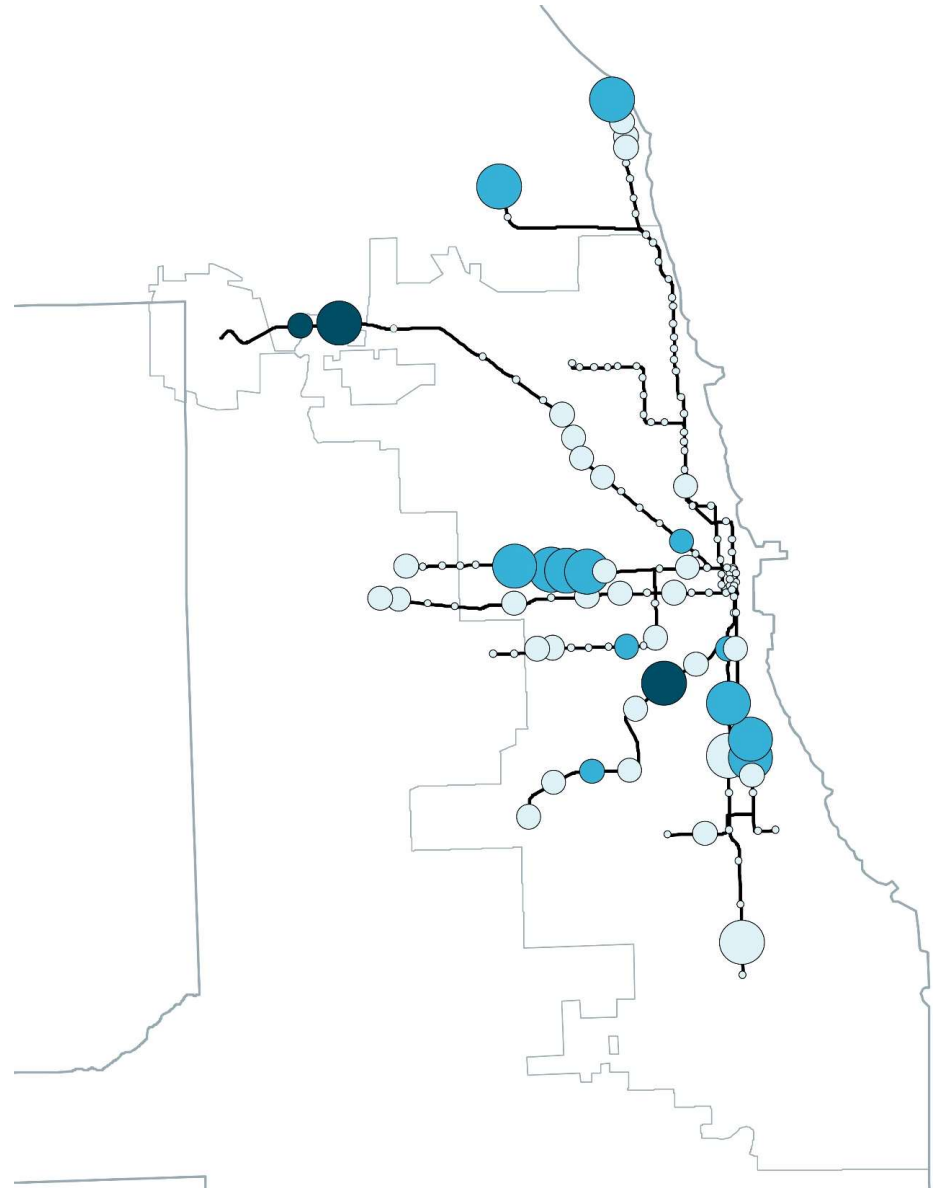
Percent of streets with missing sidewalks

- Less than 5%
- Between 5-10%
- More than 10%

Opportunity to invest in sidewalks relative to area population and employment



Source: Chicago Metropolitan Agency for Planning analysis of the 2018 Regional Sidewalk Inventory, 2015 population estimates from the Parcel-Based Housing Inventory, and 2015 Dun and Bradstreet data.





# Key takeaways

- Neither condition nor ADA accessibility was captured
- More research needed to assess accessibility, particularly around transit stations
- Data accessible in two ways:
  - Downloadable CMAP's data hub
  - Searchable on CMAP's website





# Thank you

Stephanie Levine  
[slevine@cmmap.illinois.gov](mailto:slevine@cmmap.illinois.gov)