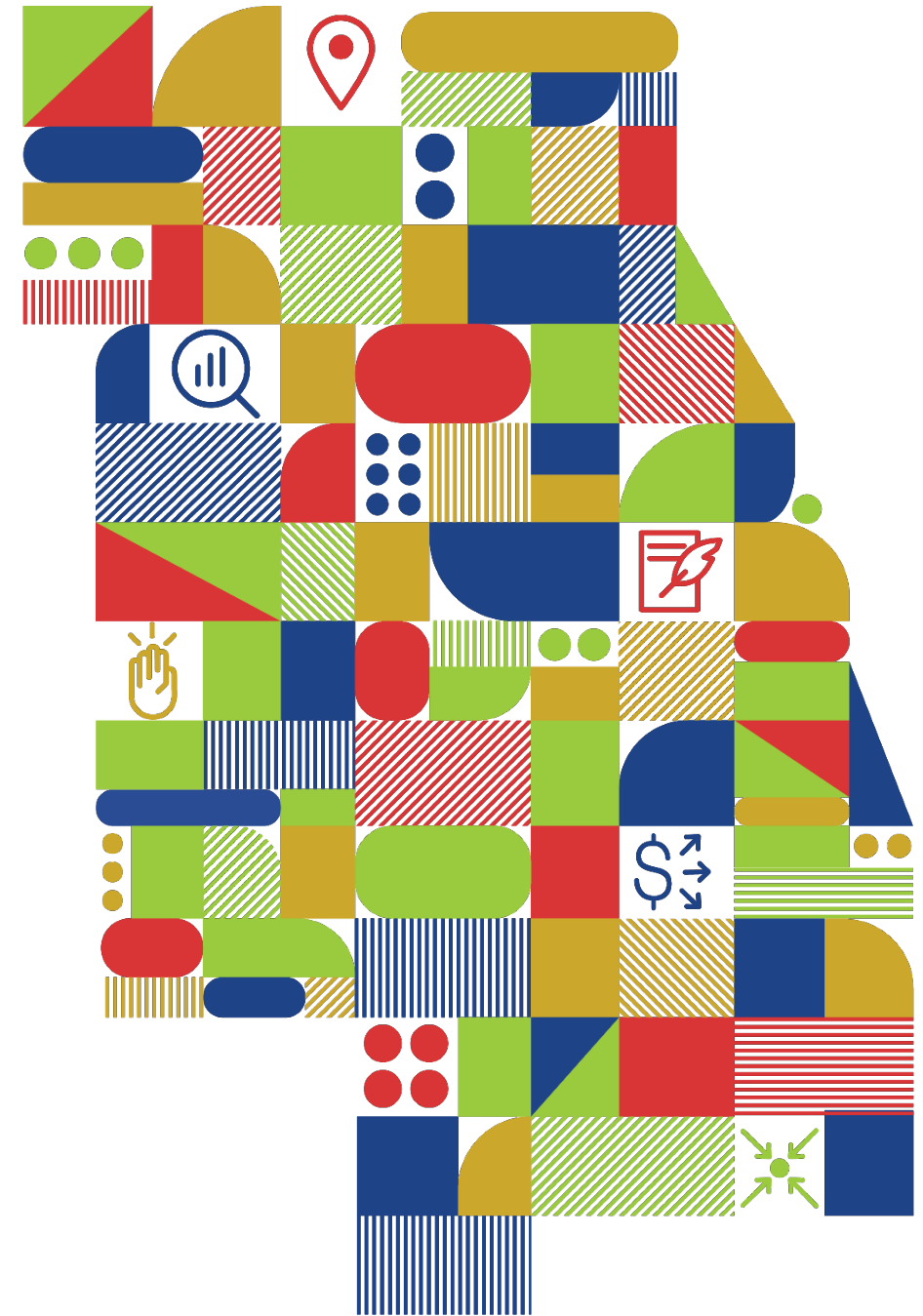




# Regional Pavement Performance

Todd Schmidt  
August 7, 2020



# Background

Transportation performance management



# Background

## Pavement performance measures

1. % of interstate system in good condition
2. % of interstate system in poor condition
3. % of non-interstate NHS in good condition
4. % of non-interstate NHS in poor condition

## Minimum condition and penalties

# CMAP region NHS mileage

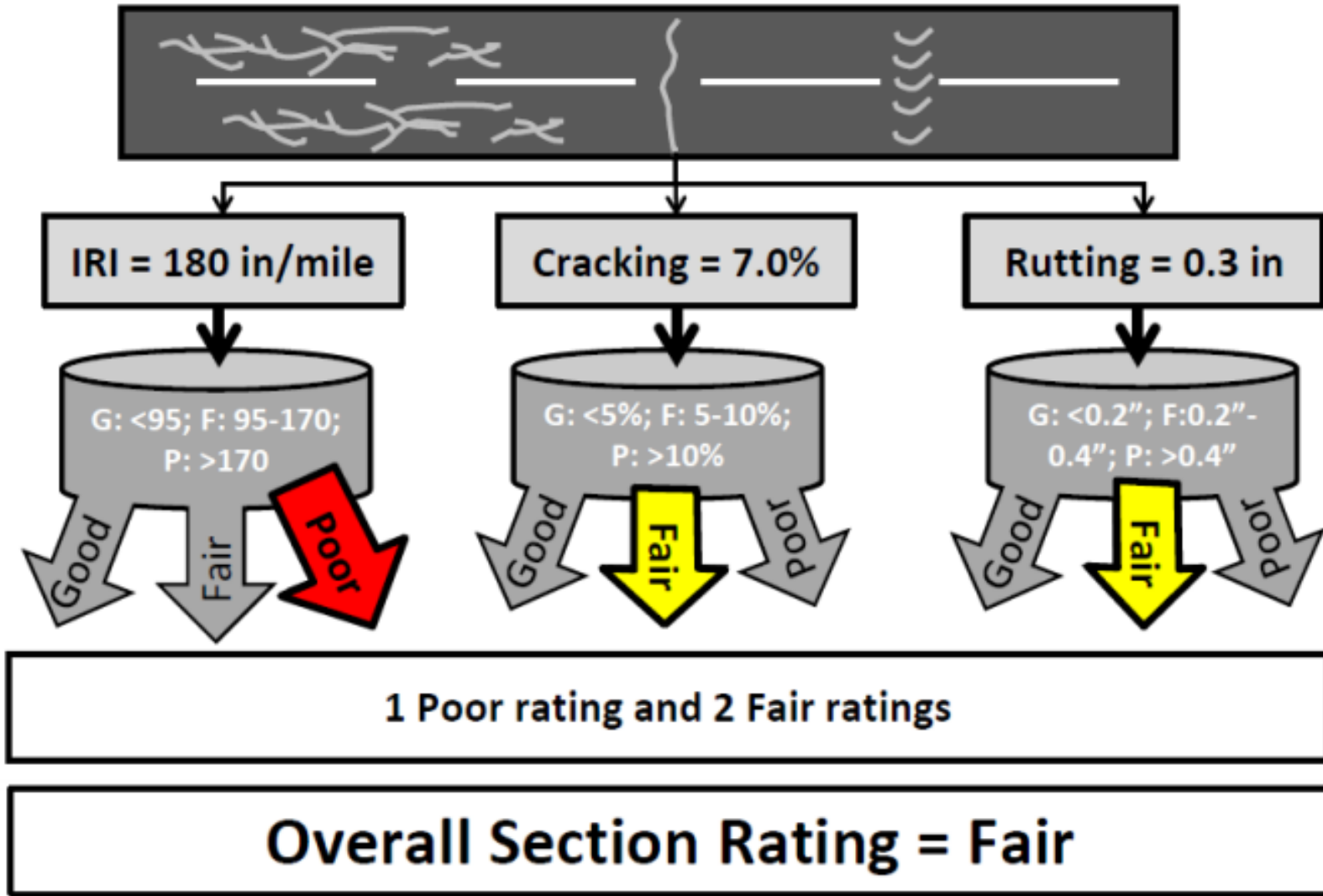
Non-Interstate NHS Lane Miles		
Jurisdiction	Total	Percent
Local	1,223.1	18.6%
IDOT	5,326.2	80.8%
Tollway	43.9	0.7%
Total	6,593.2	100.0%

Interstate NHS Lane Miles		
Jurisdiction	Total	Percent
IDOT	1,318.9	52.3%
Tollway	1,203.6	47.7%
Total	2,522.5	100.0%

# Pavement distresses and thresholds

	Good	Fair	Poor
<b>IRI (inches/mile)</b>	<95	95-170	>170
<b>Rutting (inches)</b>	<0.20	0.20-0.40	>0.40
<b>Faulting (inches)</b>	<0.10	0.10-0.15	>0.15
<b>Cracking (%)</b>	<5	5-20 (asphalt) 5-15 (JCP) 5-10 (CRCP)	>20 (asphalt) >15 (JCP) >10 (CRCP)

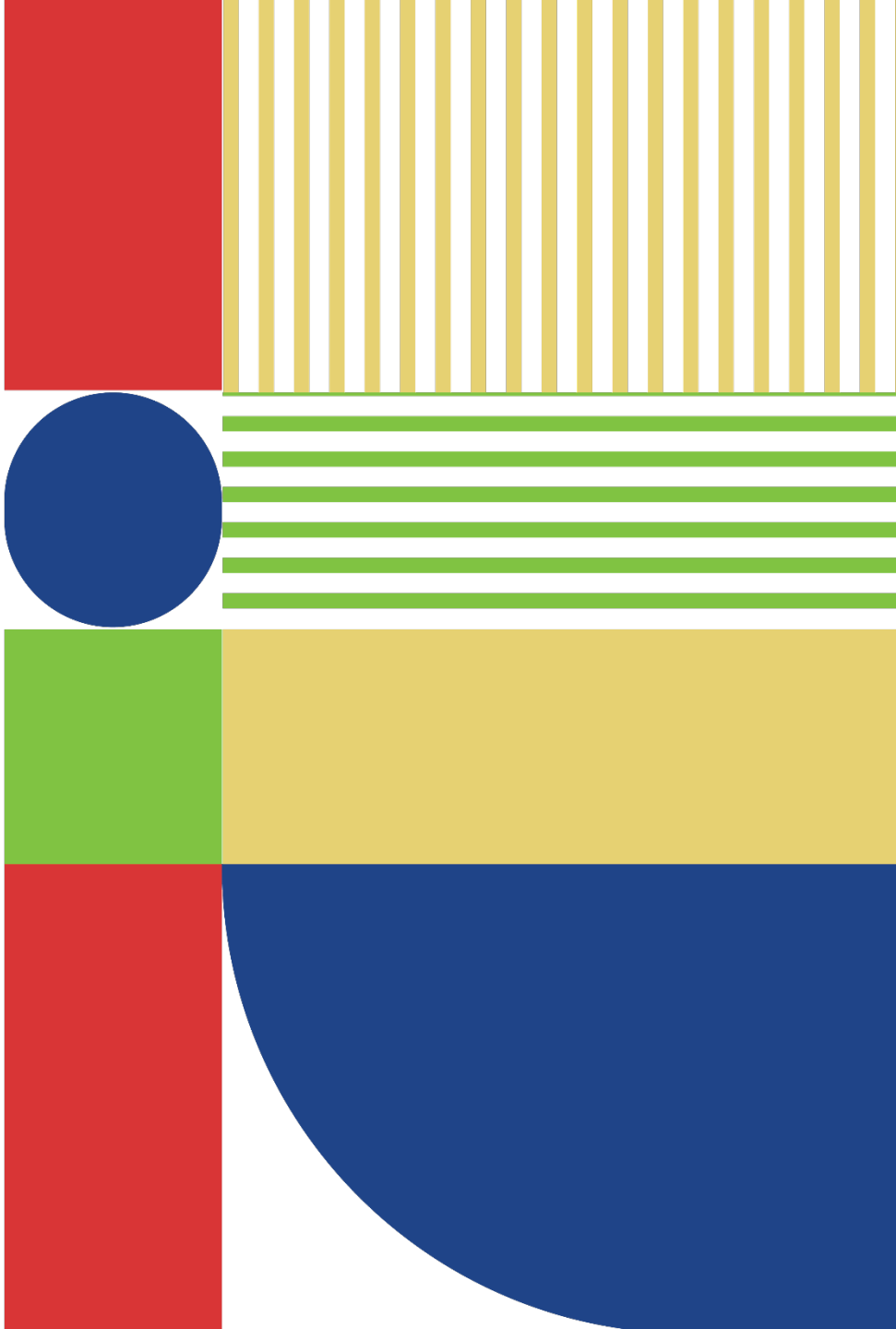
# Example condition calculation



# Pavement condition calculation

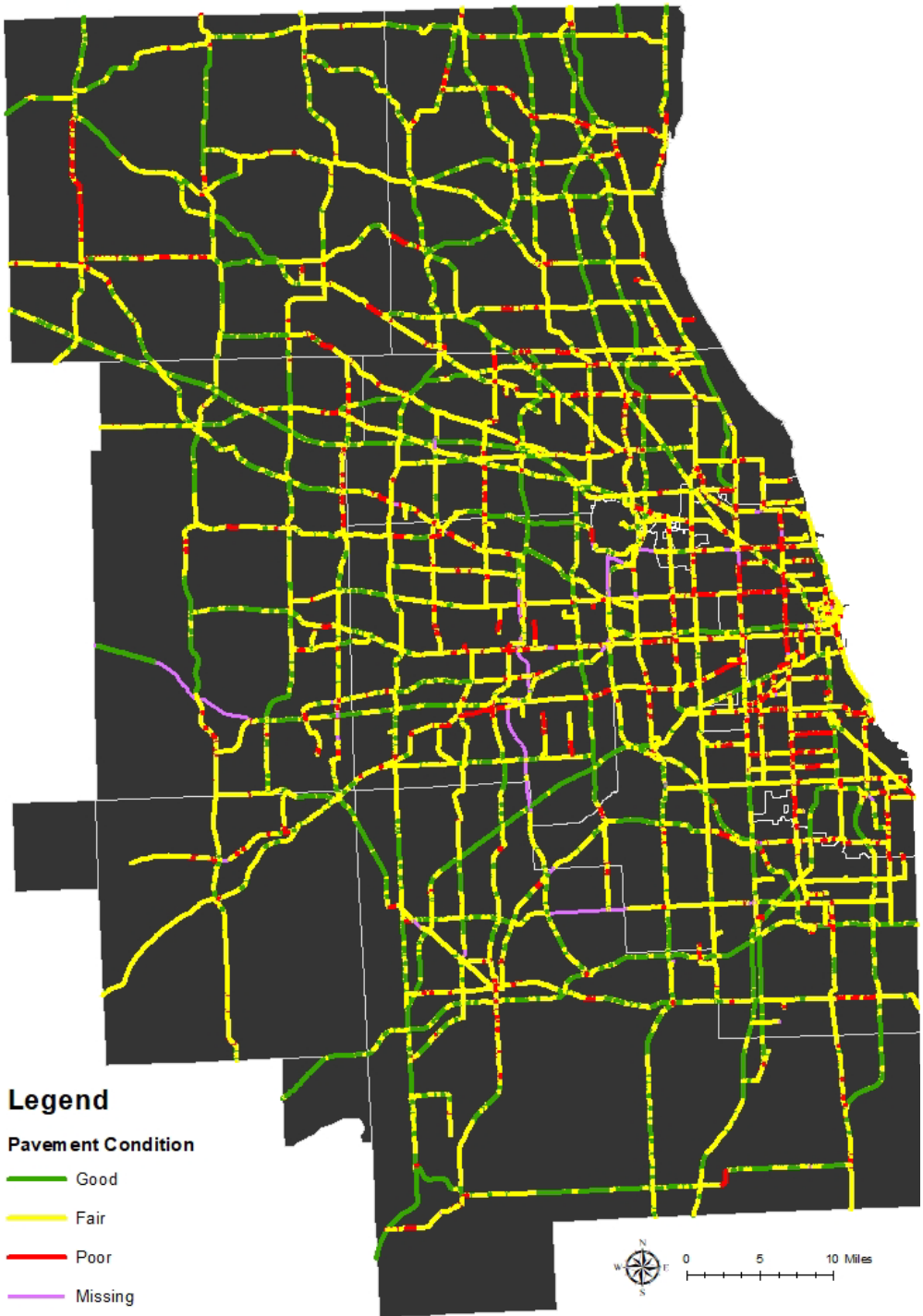
		Pavement Type			
		Asphalt and Jointed Concrete	Continuous Concrete		
Overall Section Condition Rating		3 metric ratings (IRI, cracking and rutting/faulting)	2 metric ratings (IRI and cracking)		Measures
Good		All three metrics rated "Good"	Both metrics rated "Good"	→	percentage of lane-miles in "Good" condition
Poor		≥ 2 metrics rated "Poor"	Both metrics rated "Poor"	→	percentage of lane-miles in "Poor" condition
Fair		All other combinations	All other combinations		

# CMAP Regional Pavement Performance

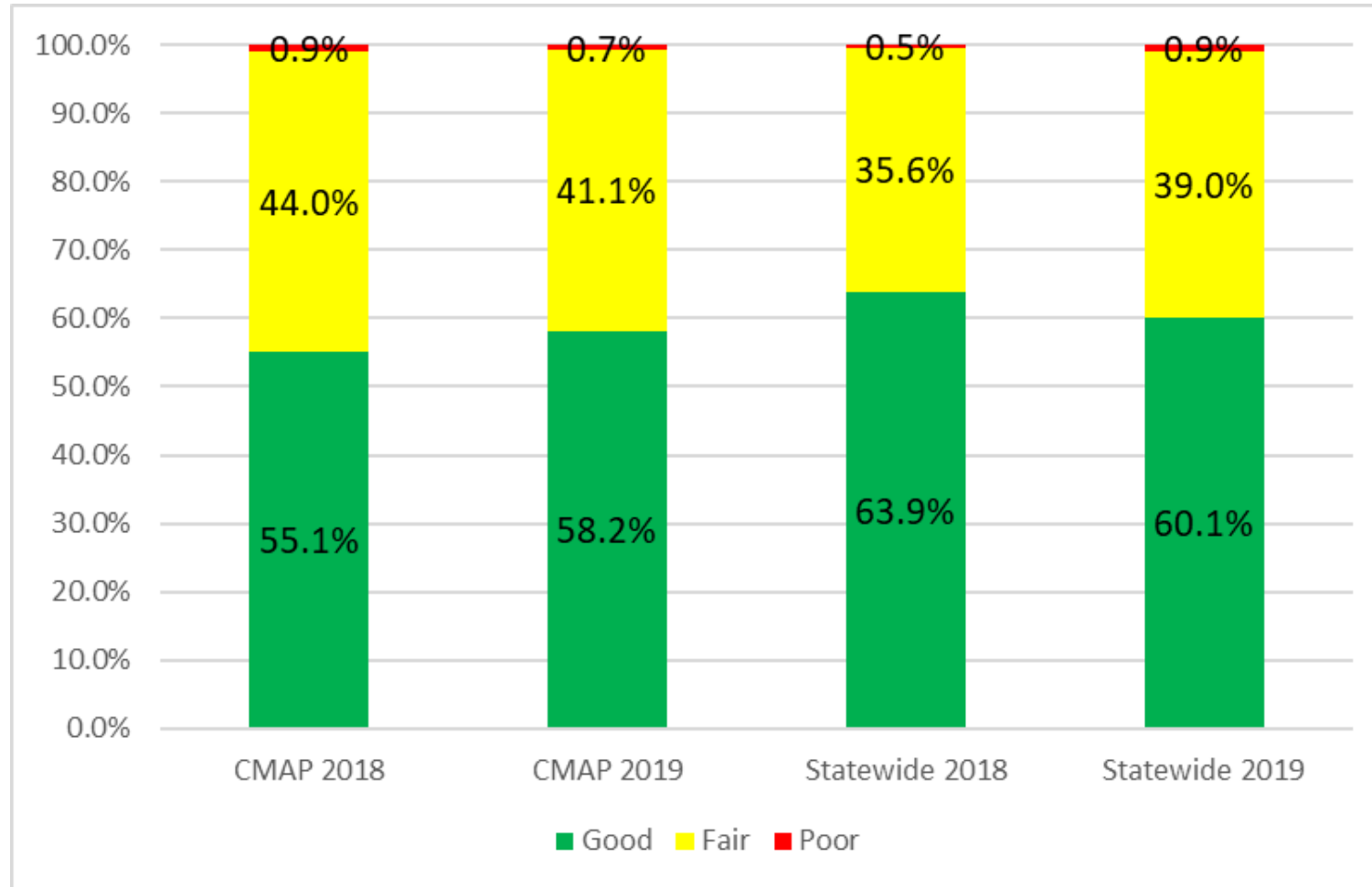




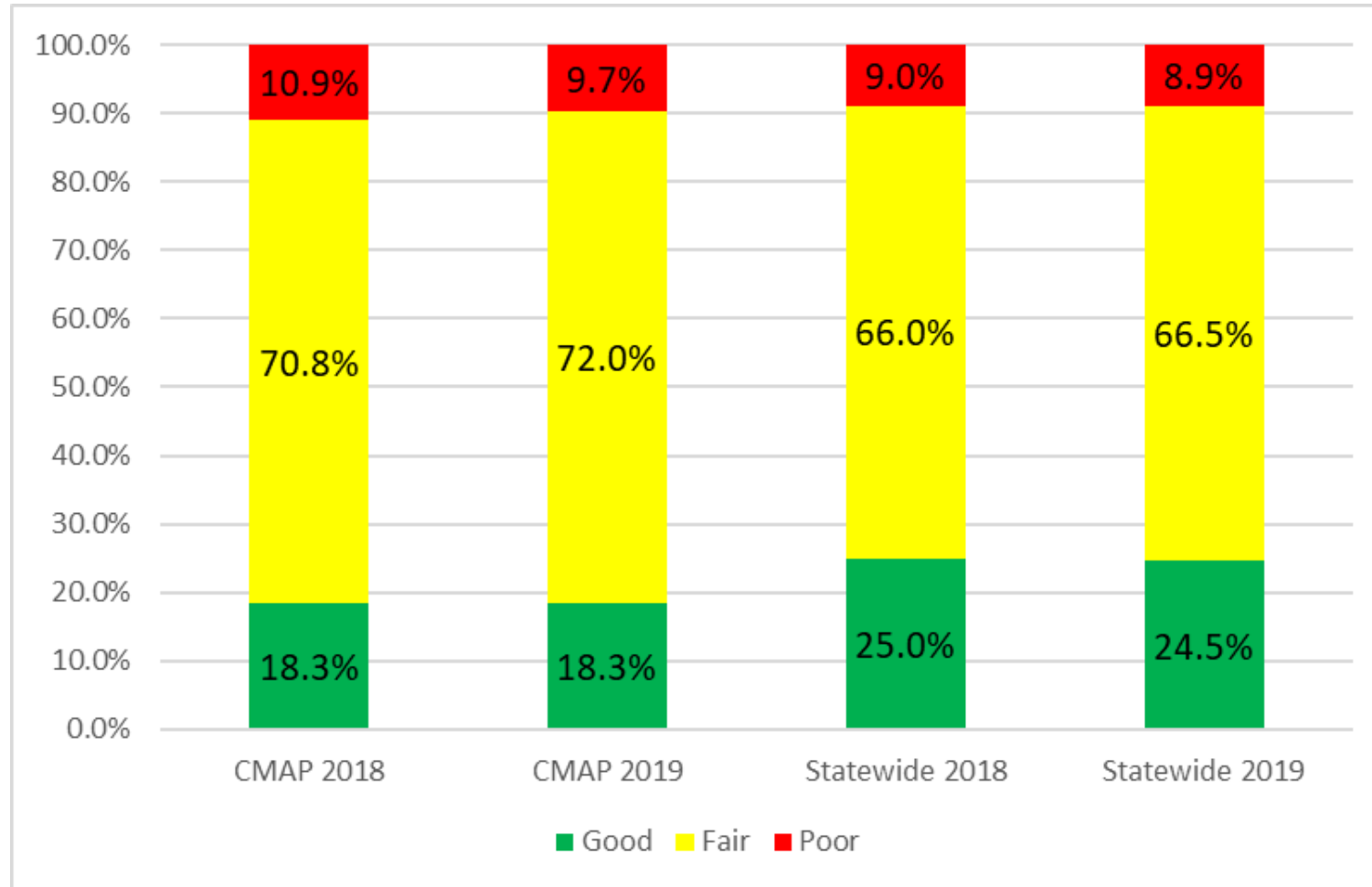
# CMAP NHS pavement performance



# Interstate pavement performance

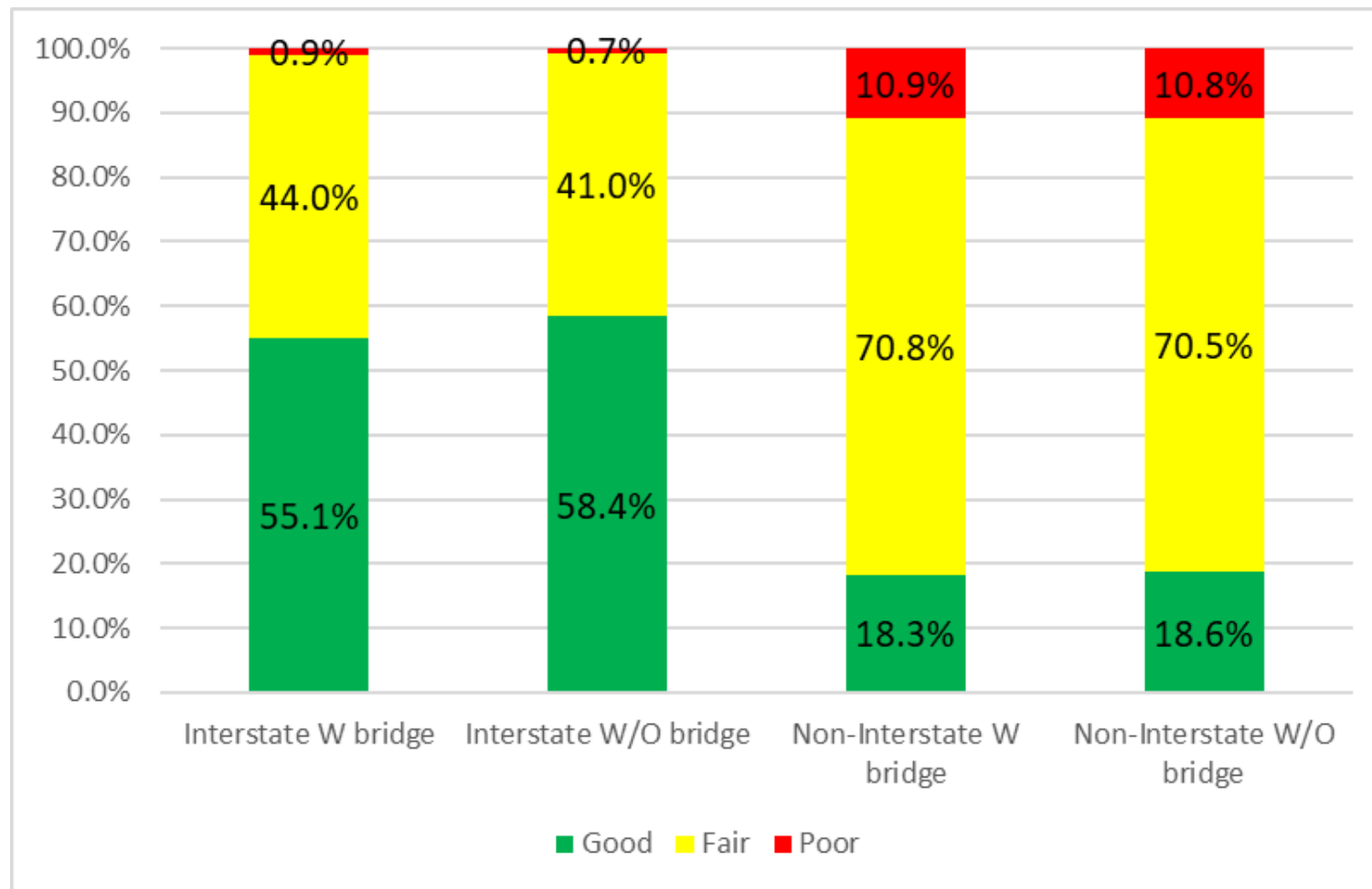


# Non-Interstate NHS pavement performance



# CMAP pavement performance

CMAP analysis of 2018 data with bridges removed



# TIP pavement analysis

## TIP Project Types - 2019 - 2022

Resurface (with no lane widening)

Widen lanes and resurface

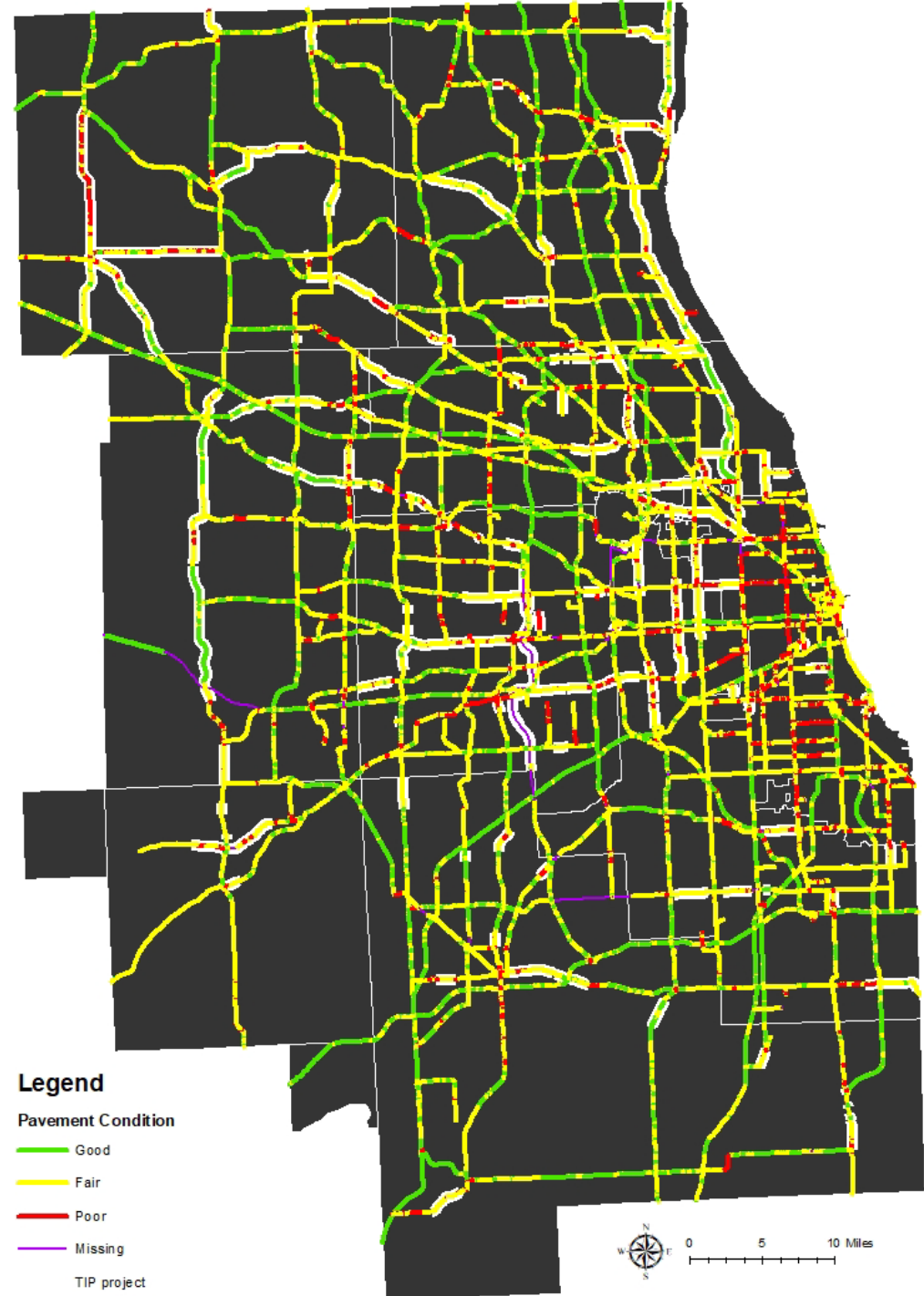
Intermittent resurfacing

Reconstruction in kind

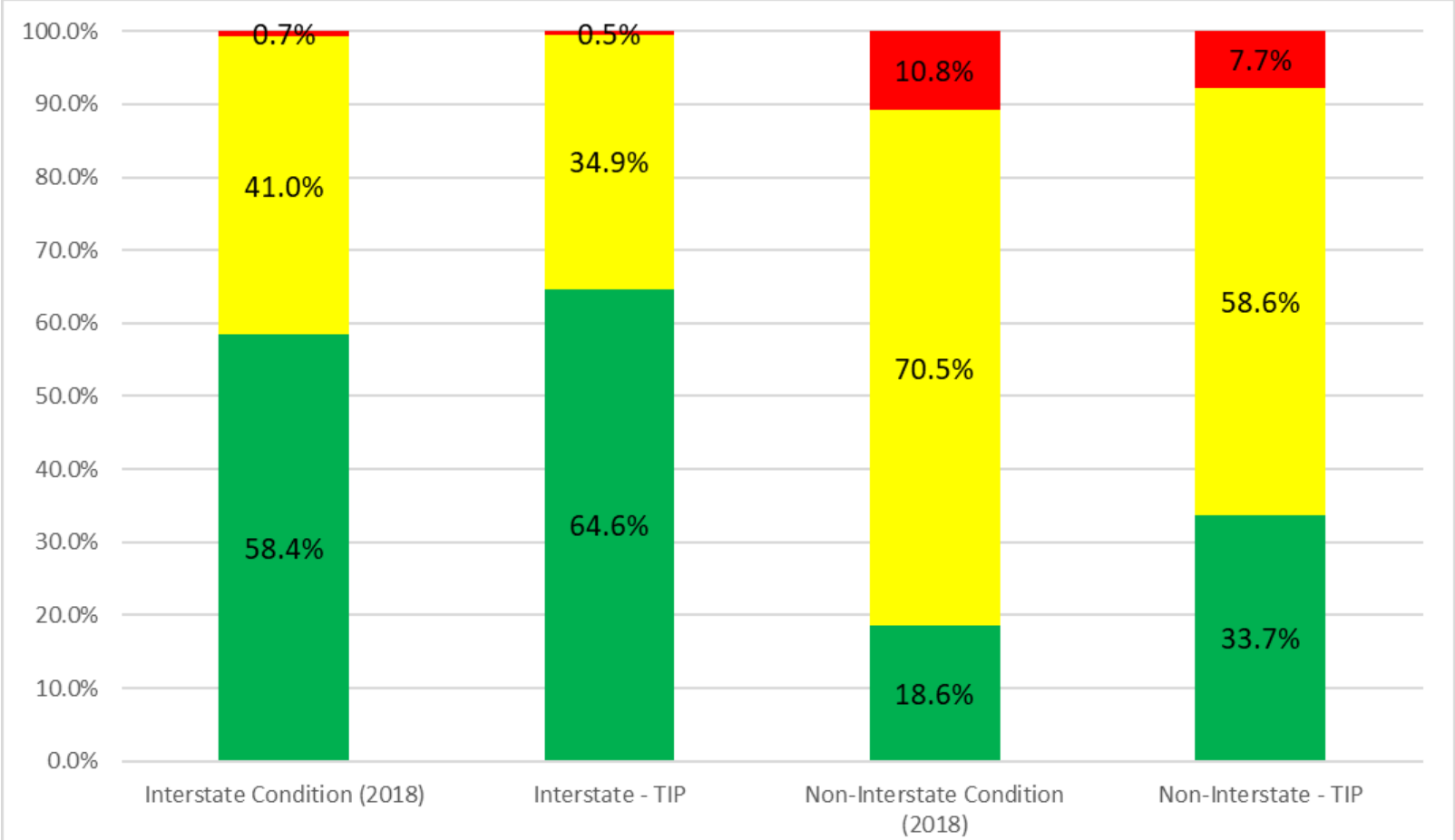
Add lanes

Reconstructing with change in use or width of lane

Pavement patching



# Pavement performance with TIP



Pavement deterioration was not accounted for in TIP analysis

Statewide targets		
	Good	Poor
Interstate	65.0%	4.9%
Non-Interstate	27.0%	6.0%

# Pavement target setting timeline

CMAP timeline

IDOT October 1, 2020

Transportation Committee approval in December

Board & MPO Policy Committee approval in January

# Pavement target setting discussion

Should the region support IDOT's targets or set its own targets?

How can CMAP and its partners help achieve the pavement goals/targets for the region/state?

Should the region have a goal/target for all federal aid eligible routes?





[www.cmap.illinois.gov](http://www.cmap.illinois.gov)

Todd Schmidt  
[tschmidt@cmap.illinois.gov](mailto:tschmidt@cmap.illinois.gov)